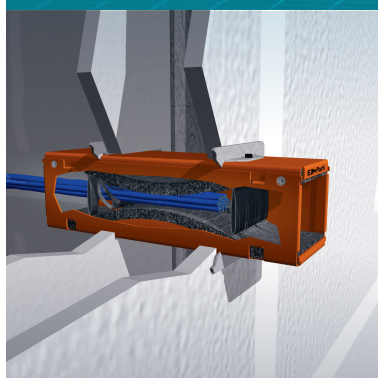


DATA CENTER Cable pathways

TAILOR-MADE INTEGRATED
CABLE MANAGEMENT



#LegrandImprovingLives

LEGRAND DATA CENTER SOLUTIONS

PUT YOUR TRUST IN A COMMITTED WORLD LEADER!

The demands on data centers are ever-increasing, and ensuring they are future-proof and ready to meet these challenges is at the core of what we do. Through continuous research and development, we evaluate industry challenges and provide practical and effective solutions that drive cost savings, improve performance, increase reliability, promote sustainability, and deliver greater flexibility.

RELIABILITY & COMPLIANCE

- With over **30 years of experience in data centers** and creating **award-winning solutions**, the Legrand Group is a global partner you can rely on
- Thanks to their **modern design**, our cable management solutions guarantee durability as well as cable and personal safety in all circumstances
- The diversity of our offerings allows you to find solutions that **comply with both global and local standards**
- Our **product line is constantly evaluated** to improve cable pathway construction and reduce installation times



STANDARDS INFORMATION:

- **Global presence/local expertise:** we guarantee that the relevant products comply with national standards or those commonly applied in the country.
- **CE marking:** all products distributed within European territory are marked with the CE logo. They are subject to the supervision of the competent authorities who have the authority to ask manufacturers to produce their CE certification reports or take samples.

SUPPORT & RESPONSIVENESS

- Legrand's worldwide production (see below) and sales network allow you to design and specify a global system backed by our extensive logistical capabilities and support of both Legrand and our expert partners in the field.
- When local and global standards allow it, Legrand is committed to designing and offering globally compliant products. Cablofil wire mesh is a prime example of a globally approved and specified product.



COMMITTED TO IMPROVING LIVES FOR A BETTER FUTURE

At Legrand, we improve lives by transforming the spaces where people live, work, and meet, with electrical and digital infrastructures and connected solutions that are simple, innovative, and sustainable!



We take concrete action to show our commitment to increasingly responsible development:

- **5% of sales dedicated to R&D** every year (the Legrand group represents over 150 years of innovation for the benefit of all, delivering more simplicity, more comfort, more security, and more energy efficiency)
- our systems, solutions and products provide **answers to the technological, societal and environmental challenges** that we all face every day
- we support the **development of sustainable buildings**
- every day we commit to **growing engaged teams** that are working hard to change society and protect our planet

We have laid out our CSR commitments in four main areas which bring together the most tangible challenges for the Group and its stakeholders:

- **promote diversity and inclusion**
- **reduce our carbon footprint**
- **develop a circular economy**
- **be a responsible business**

2030 TARGET

- Reduce carbon emissions related to our own activities by 50% and carbon emissions in our value chain by 15%
- Achieve 80% of our sales with eco-responsible solutions

2050 TARGET

- Legrand has set itself the goal of reaching carbon neutrality throughout the Group's value chain



READ ALL ABOUT OUR CSR STRATEGY ONLINE!

LEGRAND DATA CENTER SOLUTIONS

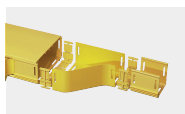
A COMPREHENSIVE CABLE

Building data centers quickly and reliably is becoming an art for installers and contractors, and having reliable partners is key! Legrand offers a wide range of solutions for both white and grey spaces, including an extensive cable management portfolio. These solutions play a critical role in reducing risks during and after the commissioning of a data center.

When you partner with Legrand, you can be assured that we always prioritise five key criteria:

- **personal health**
- **installation safety** both during construction and the lifetime of the facility
- **technically integrated solutions**
- **accessibility and local logistics** to meet demands and lead times
- **long-term partnerships** with our clients

MEET-ME ROOM



FIBER RACEWAY
cable ducting
See p.22 to 25

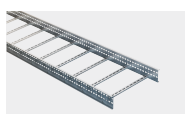


CABLOFIL
wire mesh cable trays
See p.4 to 9

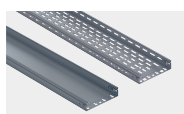


SALAMANDRE
security trunking
See p.26 to 29

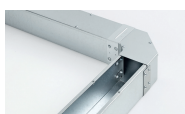
GREY SPACE



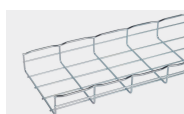
SWIFTS
cable ladders
See p.18 to 21



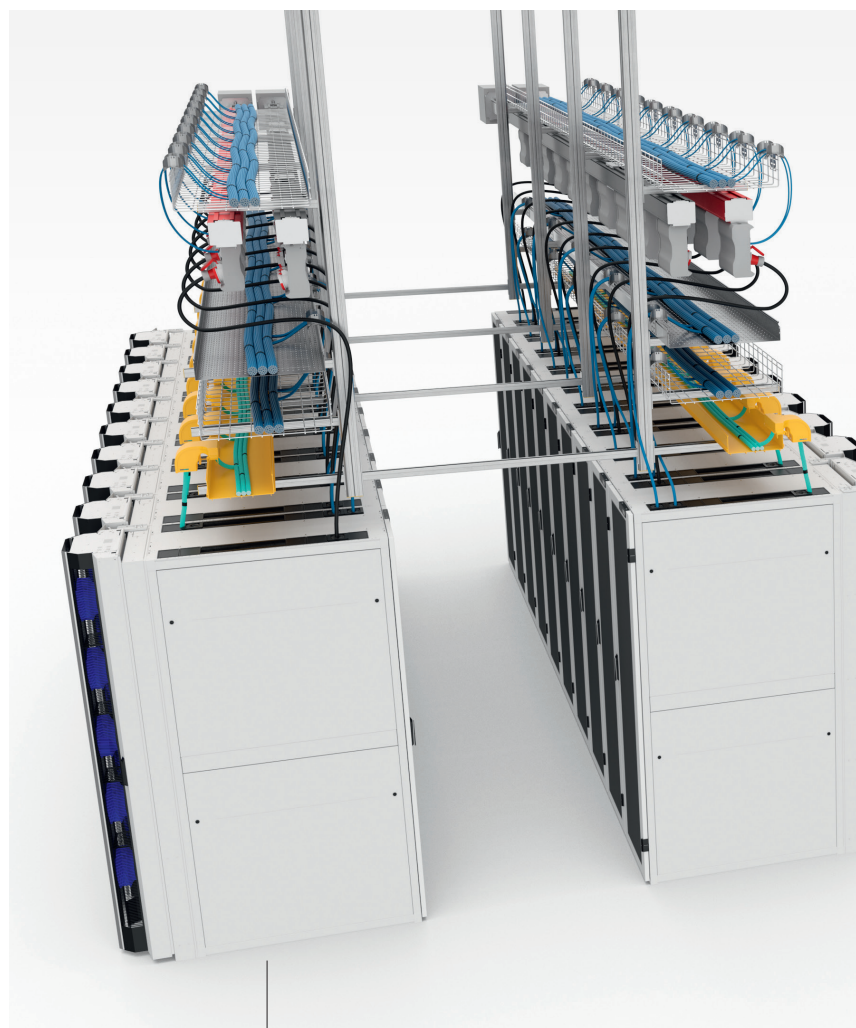
P31
cable trays
See p.10 to 13



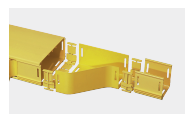
SALAMANDRE
security trunking
See p.26 to 29



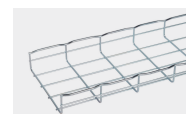
CABLOFIL
wire mesh cable trays
See p.4 to 9



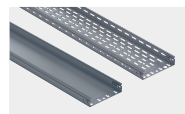
WHITE ROOM



FIBER RACEWAY
cable ducting
See p.22 to 25



CABLOFIL
wire mesh cable trays
See p.4 to 9



P31
cable trays
See p.10 to 13

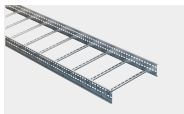


GLO-4
cable ladders
See p.14 to 17

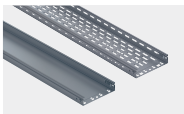
MANAGEMENT OFFERING!



ROOF & OUTDOOR



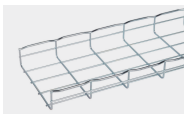
SWIFTS
cable ladders
See p.18 to 21



P31
cable trays
See p.10 to 13



SALAMANDRE
security IP rated
trunking
See p.26 to 29

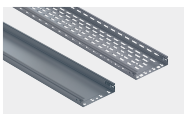


CABLOFIL
wire mesh cable trays
See p.4 to 9

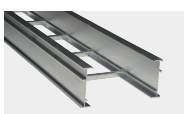
EXTERNAL OR HUMID AREAS



CABLOFIL
wire mesh cable trays
See p.4 to 9



P31
cable trays
See p.10 to 13



ALUMINIUM
cable ladder
See p.34 to 35

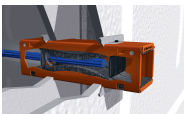


OTHER SOLUTIONS FOR DATA CENTERS: SEE P.38

Contact us to learn more about the complete portfolio of data center solutions available from the Legrand Group, including Zucchini transformers, Minkels cabinets, Raritan PDUs, Legrand UPSs, and office systems.



FIRESTOP DEVICE



EZ-PATH
passive fire protection
devices for safe connections
between rooms
See p.30 to 33

CABLOFIL

THE TOUCHSTONE FOR CABLE MANAGEMENT

The Cablofil range of wire mesh trays offers multiple options in terms of performance and numerous benefits thanks to its 90% open structure.

A wide range of sizes, several heights and widths, and different finishes, either standard or custom-configured, ensure perfect adaptation to the specific requirements of data centers.

- GLO-4 medium-duty ladders

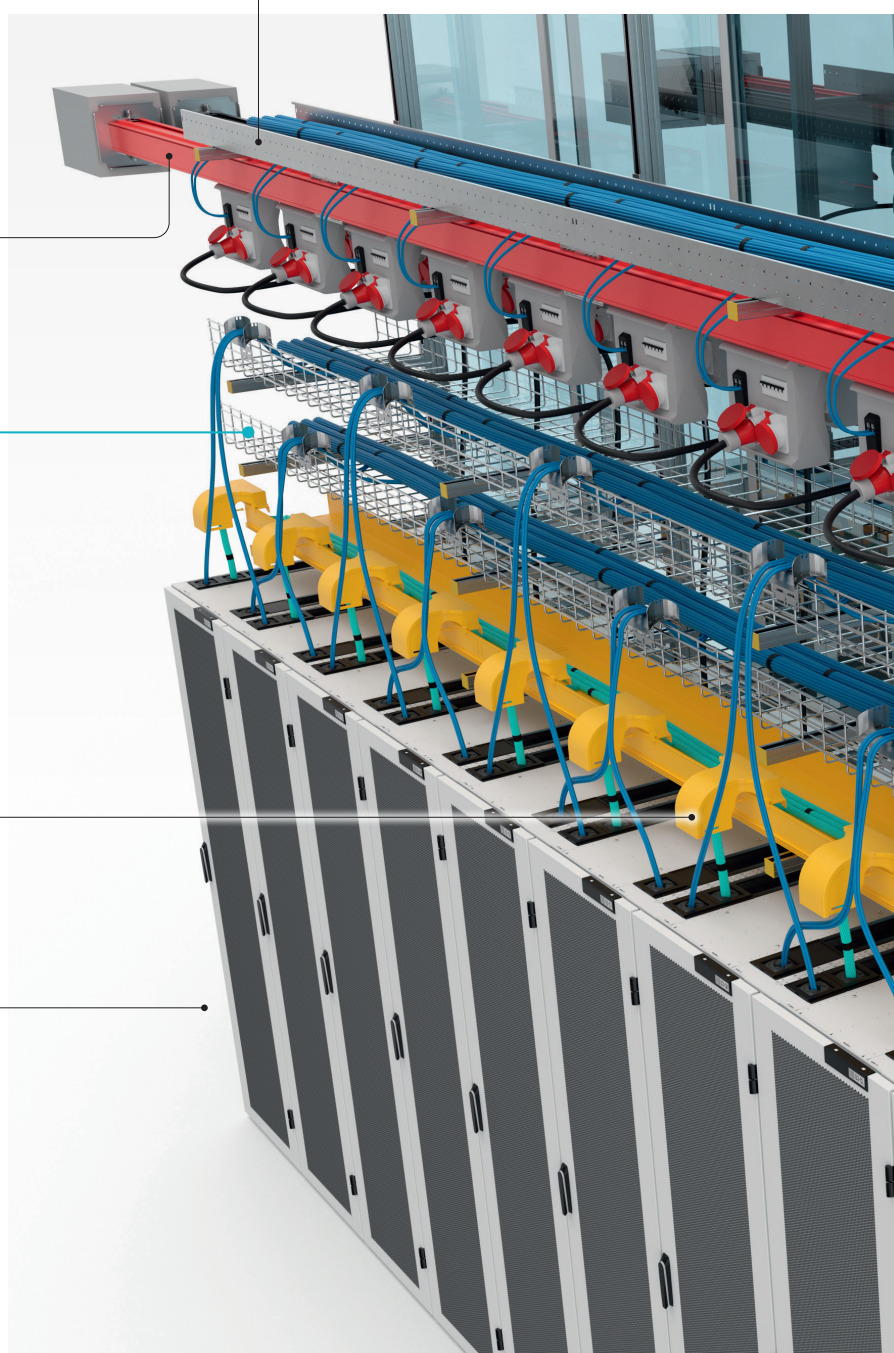
- Starline track busway

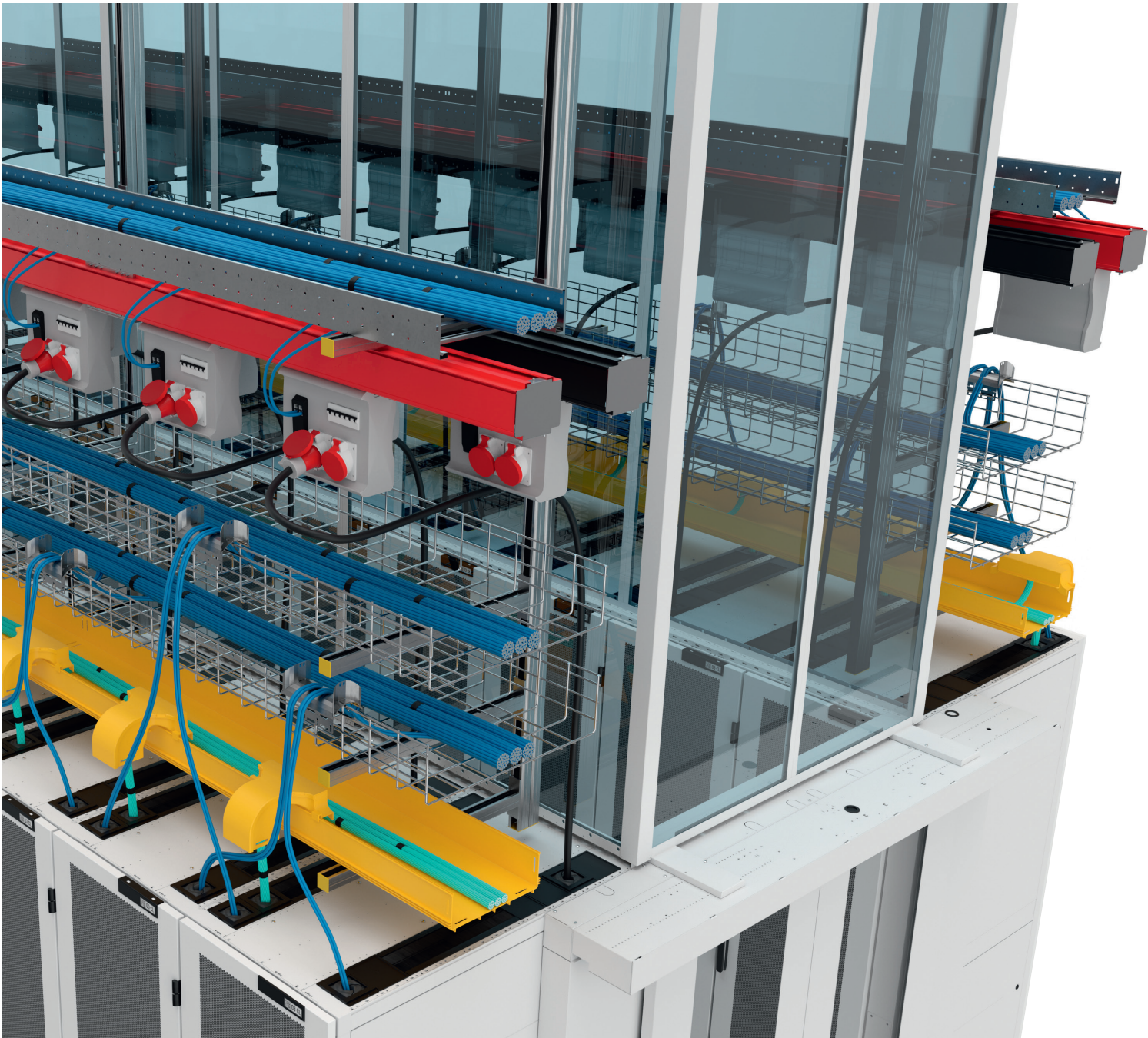
CABLOFIL WIRE MESH



- Fiber Raceway

- Minkels racks & containment





CABLOFIL

THE TOUCHSTONE FOR CABLE MANAGEMENT

(continued)

COMPLIANCE

- **Globally approved designs:** Cablofil has set the gold standard for cable management worldwide. Its success is the result of continuous innovation and high-quality manufacturing practices, earning the trust of engineers and contractors alike
- **The most tested and certified cable tray in the market,** Cablofil undergoes rigorous testing at every stage of the manufacturing process and fully complies with all major electrical standards, including:
 - IEC 61537 (International Electrotechnical Commission)
 - Nema VE1 & VE2 (Tri-national standard for the USA, Canada and Mexico)
- **Proven fire resistance:** tested and certified to DIN 4102-12 standards
- **A wide range of materials to conform to all requirements:**

EZ

Electrozinc
 ISO 20-81/82, NF/EN 12-329, DIN 50961

EZ+

Organically coated, electrogalvanised after manufacturing (Black)
 ISO 20-81, DIN 50961

HDG

Hot dip, galvanisation after manufacturing
 NF/EN/ISO 1461, DIN 50976

HR

High resistance (ZnAl, ZnMg, ZnNi)
 EN 10244-2, ISO 92223, IEC 61537, DIN 4102-12



#1 SPECIFIED WIRE MESH CABLE
 MANAGEMENT SYSTEM: MORE THAN 142,000
 MILES OF TRAY ACROSS THE GLOBE!

304L

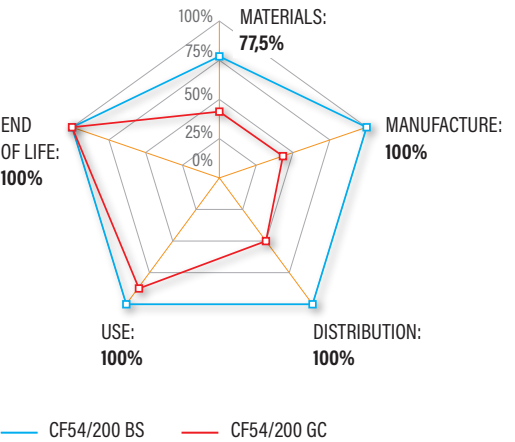
Stainless steel
 NF 10-088-2

RAL

Identification and corrosion coating (on demand)

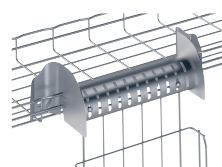
ENVIRONMENT

- **Local production, global quality:** Cablofil is produced in six different factories across the globe, ensuring consistent quality across all locations. This proximity to customer projects helps Legrand Data Center Solutions to minimise the environmental impact of its activities by reducing the transport time required
 - **Recycled materials are used** to manufacture Cablofil wire mesh trays, contributing to a circular economy
 - Standard High Resistance (HR) coating range **reduces carbon footprint** and improves PEP (Product Environmental Profile) values
 - The **HR finish stands out** due to its performance and eco-friendly design. Its manufacturing process generates four times fewer CO₂ emissions (measured in grams of CO₂ equivalents), compared to the standard HDG (hot-dip galvanisation) finish, significantly reducing its environmental impact.
- Good eco-design practices are achieved in these phases:**

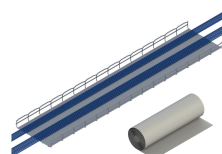


SAFETY

- Wire mesh constructed of **high-quality, precision-engineered welded steel wire**
- **Cablofil DNA (Safe-T-edge)**: reduces the probability of cable damage and personal injury (for installers/staff)
- **90% open structure**:
 - easy visual inspection, access and maintenance of cables, even in multi-level wire mesh tray installations
 - due to better air flow, cable temperature can be reduced resulting in better operating costs
 - minimises retention of dust
 - optimises reach of sprinklers/mist and Oxy reduction
 - optimised mechanical shear cutting on-site
 - no metal flakes or carbon dust
- **Earthing** among the lowest measured electrical resistance. Standards require to be under 50mΩ, Cablofil is <1mΩ!
- **Optional Cable liners protecting and hiding cables**



- **Dropouts with special over-the-side design and a full range of fixed or flexible accessories** (see Cablobend Systems p.9): increase flexibility and maintain system strength



- **Fire-tested inlay** to reduce any risk of cable pressure, whilst also restricting cables on display in highly visible areas

OUR ADVICE

In the data center environment, where temperature and hygrometry are controlled, and pollution is non-existent, we recommend an electro-galvanised finish (as do manufacturers of servers, switches, or electronics who use this process for their chassis and covers). In contrast to electrostatic risks, the threat of zinc whiskers is considered negligible.

DESIGN & MOUNTING

- **Our data center range is optimised for**:
 - flexible and reusable design
 - lifetime personal & cable safety
 - global availability & easy access to parts
 - quick and autocoupler integration
 - reducing parts on site or stock by design
- **Durable surface treatment**: plenty of surface treatments are available to meet your specific needs. Contact us for more info!



FIND OUT MORE ABOUT CABLOFIL SOLUTIONS ON OUR WEBSITE (catalogue, technical information, BIM objects, PEP files...)

Installation recommendations:

		Office & Reception	Grey Space	White Space	Outside (Roof)	Water Treatment
Electro Galvanised (on demand) Wire mesh: DIN50961 - ISO 20-81	EZ	✓	✓	✓ (preferred solution)	✗	✗
HR Pre-Galvanised Wire mesh: EN 10244-2 - Tray & Ladder: EN 10346	HR	✓	✓	✓	✓	✓
Hot Dip Galvanised EN/ISO 1461	HDG	✓	✓	✗	✓	✓
Stainless 316/304 EN 10088-2	304L 316L	✓	✓	✓	✓	✓
Pre-Galvanised (on demand) Wire mesh: EN 10244-2 - Tray & Ladder: EN 10346	PG	✓	✓	✓	✗	✗
Powder coating (on demand)	RAL	Possible for corrosion protection and identification				

✓ Recommended ✓ Possible/Over-designed ✗ Not possible

Need help choosing the right material for your project? Need more information on ISO 9223? **Don't hesitate to contact us!**

CABLOFIL

THE TOUCHSTONE FOR CABLE MANAGEMENT

(continued)

6 SYSTEMS ENSURING AN EASY, SAFE, AND RELIABLE INSTALLATION

1. SAFE-T-EDGE WIRE MESH

System advantages

- T-joint system welds the lateral wires to the bottom edge of the top wires, eliminating sharp edges and creating a smooth cable pathway
- Global standardisation: same design and part number for every country
- Global certification: compliance with international safety and performance standards

Dedicated data center range

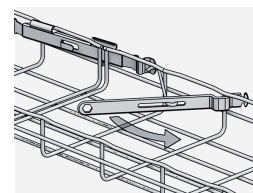
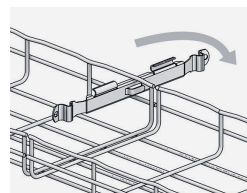
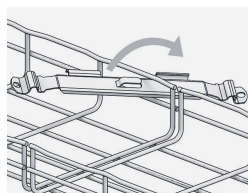
- 30, 54, 105 and 150 mm
- From 50 to 600 mm, and 900 mm
- 2 systems: CF and Fasclic+



2. COUPLERS

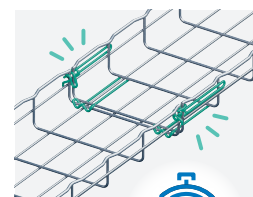
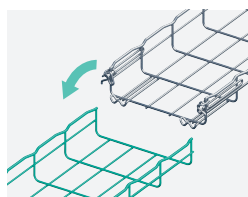
EDRN system advantages

- High strength
- Guaranteed earth continuity
- Smooth rounded wires to protect cables and installers



Fasclic+ system advantages

- Integrated auto-coupler on the length
- Fast coupling mode (for mounting or disassembling)
- Available in all sizes and several material finishes
- Easily installed in confined spaces
- No hardware or tools required to assemble
- Patented system

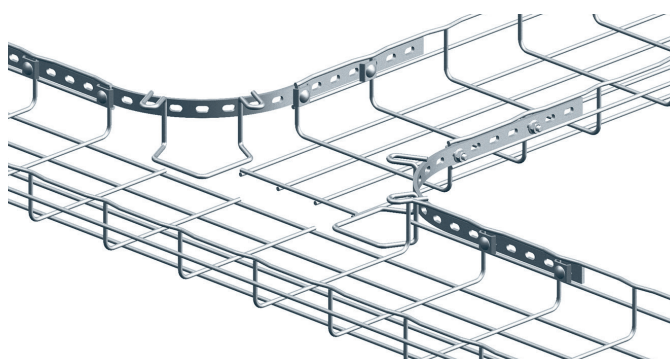


DISCOVER FASCLIC+!

3. INNER CORNER

PA inner corner: system advantages

- No sharp edges
- Patented design
- Ensures cable radius maintained
- Helps avoid cable stress
- Less parts, more freedom (Bend, T or Cross construction with the same reference)
- Available in kit (RADT kit) with T radius and in different sizes

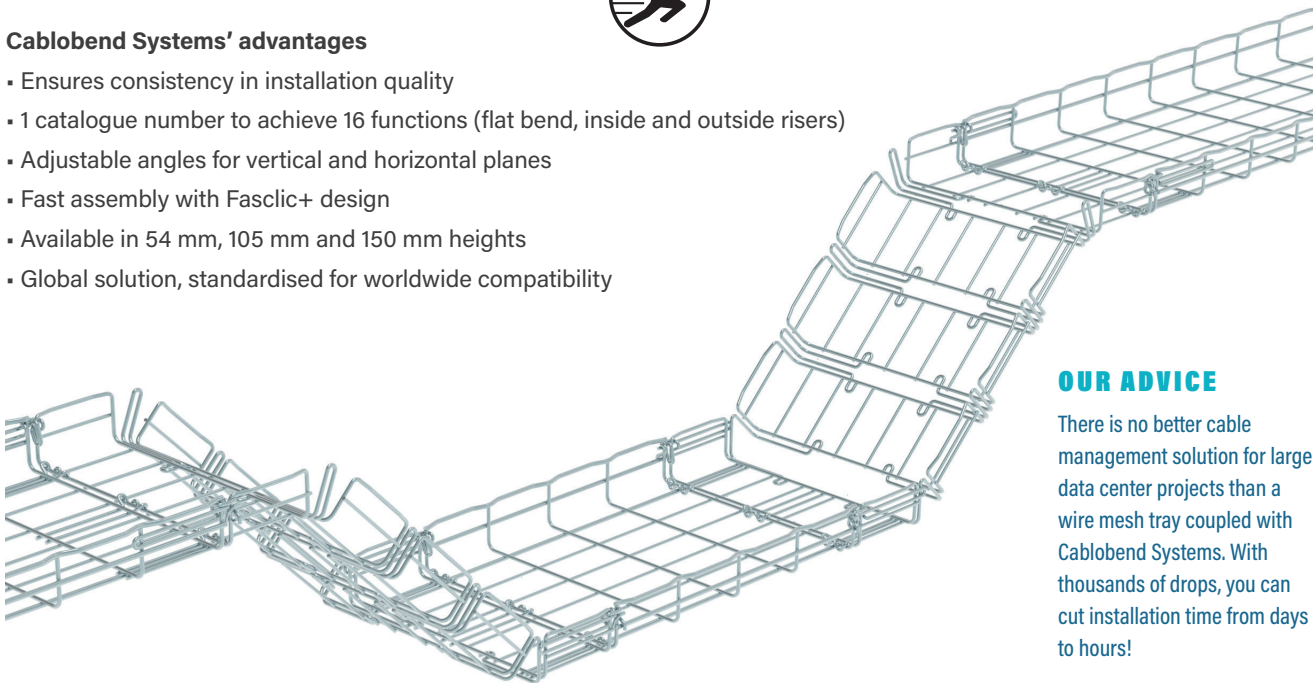


4. FASTER AND SAFER BENDING



Cablobend Systems' advantages

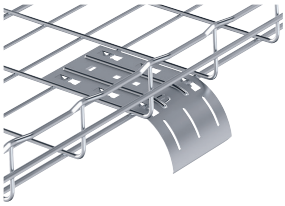
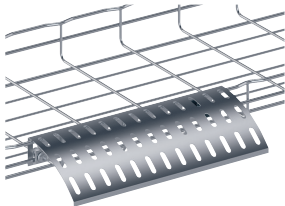
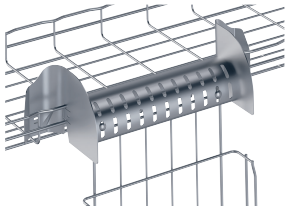
- Ensures consistency in installation quality
- 1 catalogue number to achieve 16 functions (flat bend, inside and outside risers)
- Adjustable angles for vertical and horizontal planes
- Fast assembly with Fasclic+ design
- Available in 54 mm, 105 mm and 150 mm heights
- Global solution, standardised for worldwide compatibility



OUR ADVICE

There is no better cable management solution for large data center projects than a wire mesh tray coupled with Cablobend Systems. With thousands of drops, you can cut installation time from days to hours!

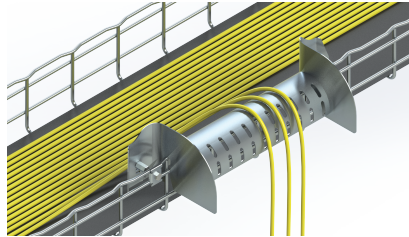
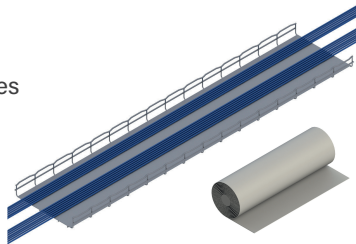
5. SAFE DROPOUT

	DEV 100 dropout	Dropout kit	UDO dropout
			
Simple installation	✓	✓	✓
Tie-down slots	✓	✓	✓
Compatible with service trays	✓	✓	✓
Cut-free installation		✓	✓
Variety of sizes		✓	✓
Supports large cable bundles			✓
Safety side rails			✓

6. INLAY (OPTIONAL)

Plastic inserts

- Alleviates concerns over pinch point on cables
- Colour: Black
- Flame class : UL94 V0
- UV Rating: UL746C-F
- High dielectric strength
- Low moisture absorption
- RoHS compliant



P31

THE INNOVATIVE CABLE TRAY

The Legrand P31 cable tray system is designed for efficient cable management, featuring a perforated design that allows for optimal ventilation and easy cable installation. Its innovative automatic junctions and male/female interlocking system ensure quick, simple, and secure assembly in various settings.

The system offers a range of sizes, with widths from 75 mm to 600 mm and depths from 25 mm to 100 mm, accommodating diverse installation requirements.

Additionally, the P31 trays can be easily suspended from ceilings, providing installation flexibility.

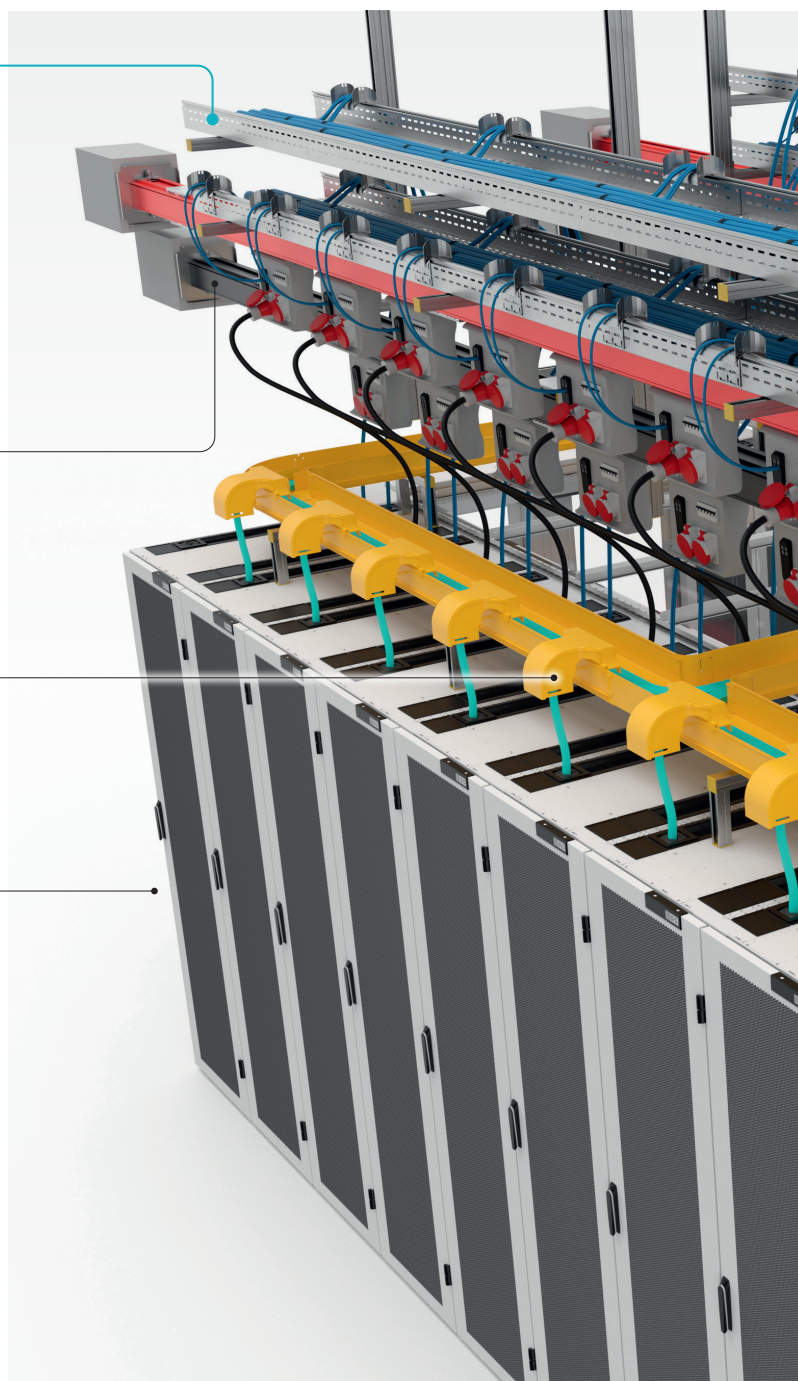
P31 CABLE TRAY

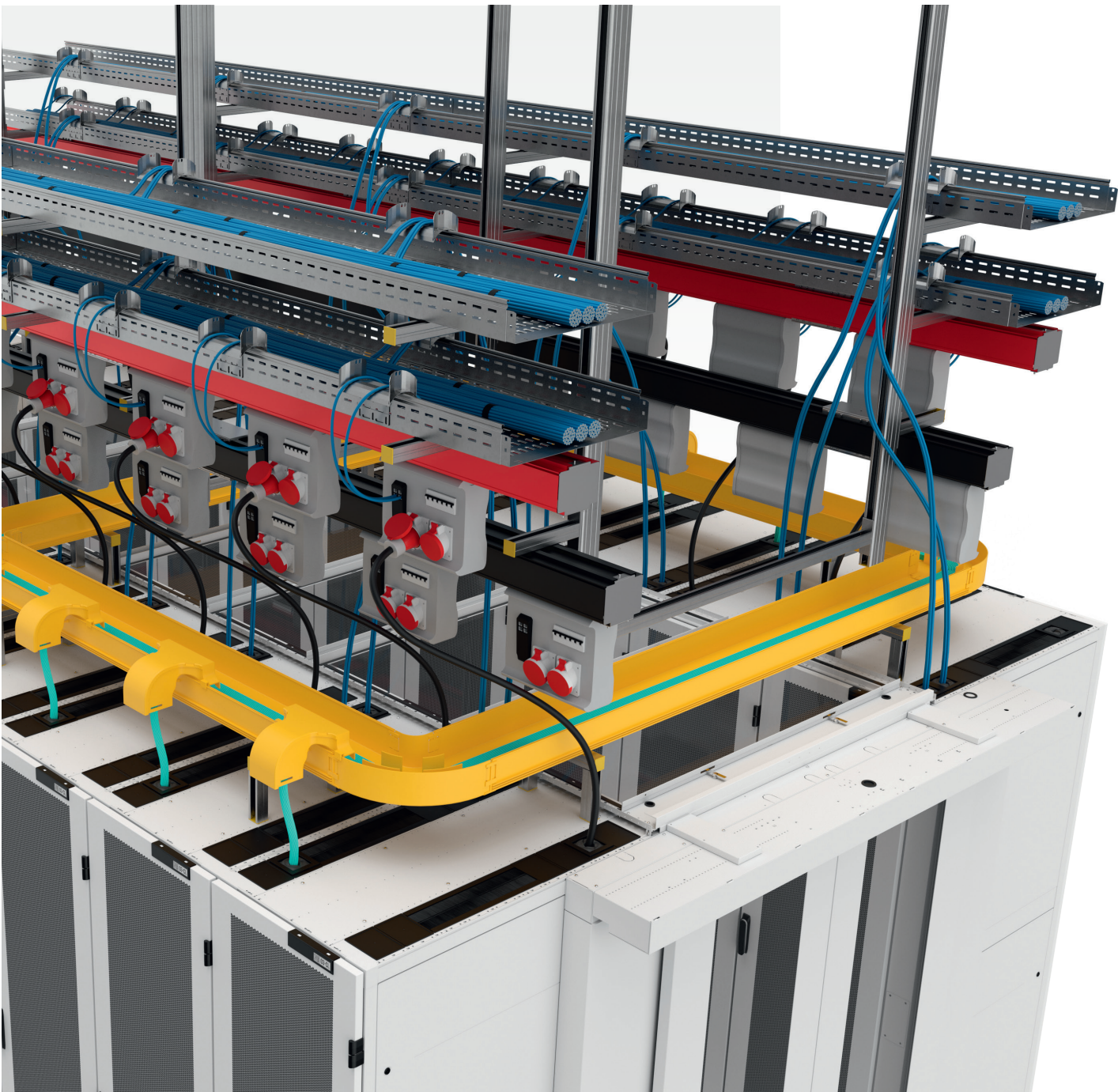


- Starline track busway

- Fiber Raceway

- Minkels racks & containment





P31

THE INNOVATIVE CABLE TRAY (continued)

COMPLIANCE

- Robust and efficient products complying with the IEC 61537 standard
- E30/E90 certified according to DIN 4102-12, which guarantees fire resistance



ENVIRONMENT

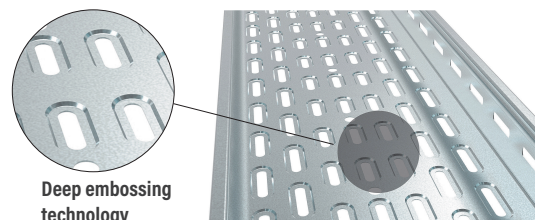
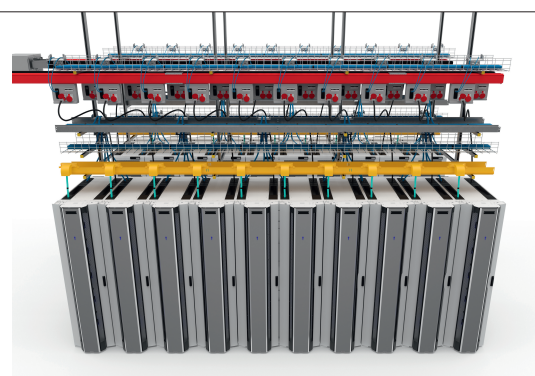
- **Optimized steel thickness** with precision embossing: no material waste, more performance
- **PEP files available**

SAFETY

- **Return flange design:** engineered to redefine industry standards, offering unparalleled cable protection. It provides a secure channel with an added structural edge that guards against wear and tear while enhancing the structural integrity
- **Radius-designed fittings** for cable protection
- Embossed blocks in fittings to **protect cables against potential sharp edges**
- Deep embossing to **reinforce safe working loads** and **decrease the cable peeling risk**
- **The right material for the right environment:**



(on demand)



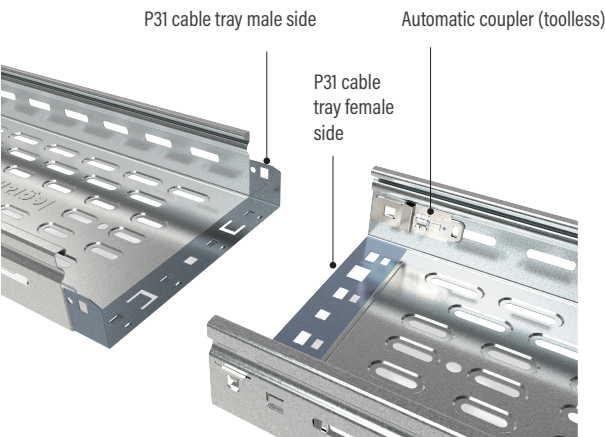
Deep embossing technology

DESIGN & MOUNTING

Benefit from significant time savings during installation thanks to P31's innovative design!

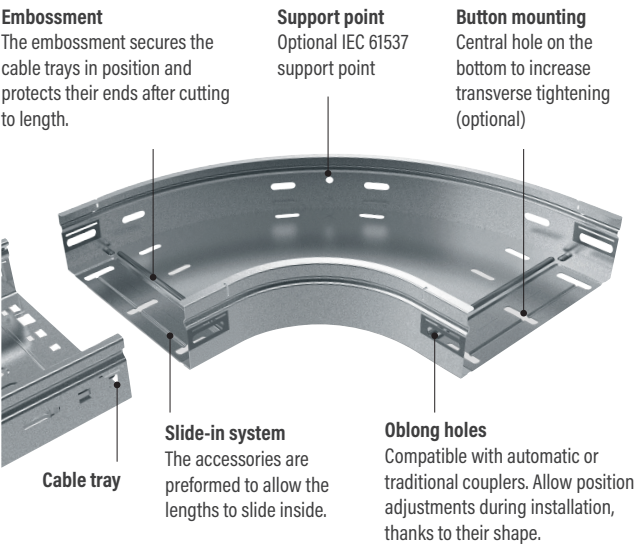
AUTOMATIC COUPLER ASSOCIATED WITH MALE/FEMALE CONNECTION

Available on all widths (75 to 600 mm) and heights (25, 50, 60 and 100 mm), this innovative design ensures a quick and safe connection in all cases. The automatic coupler is also designed to allow fast uncoupling.



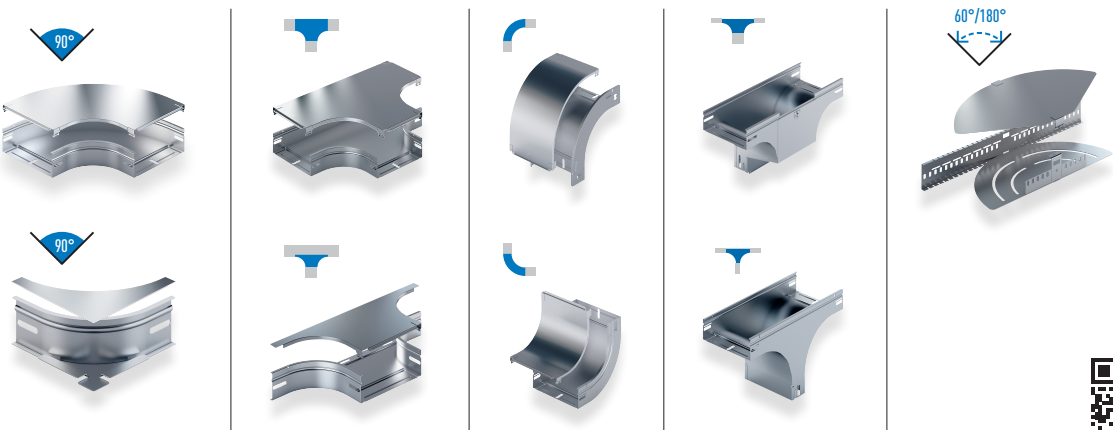
CLEVER MOUNTING FEATURES

P31 cable tray's specific features facilitate the installation of accessories, regardless of the length of the cable tray used.



WIDE RANGE OF ROUTING ACCESSORIES

The P31 range of routing accessories offers the highest level of flexibility for different configurations and significantly reduces installation time.



FIND OUT MORE ABOUT P31 SOLUTIONS ON OUR WEBSITE (catalogue, technical information, BIM objects, PEP files...)

GLO-4

LIGHT AND MEDIUM-DUTY LADDERS, QUICK TO INSTALL AND FLEXIBLE

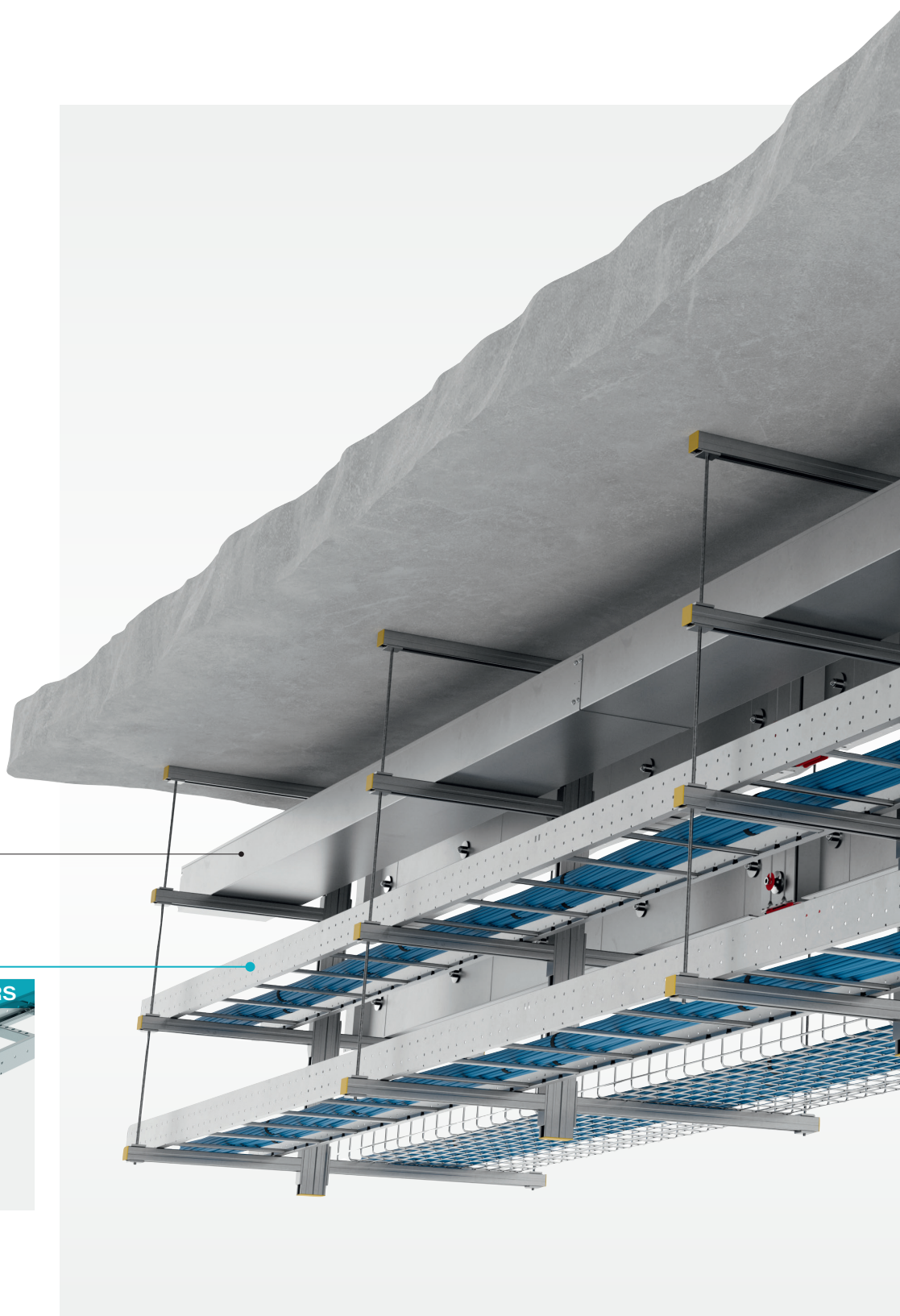
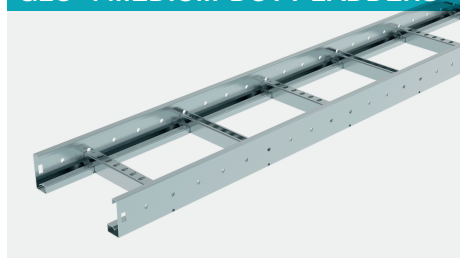
The GLO-4 cable ladder system offers a variety of strength options and dimensions.

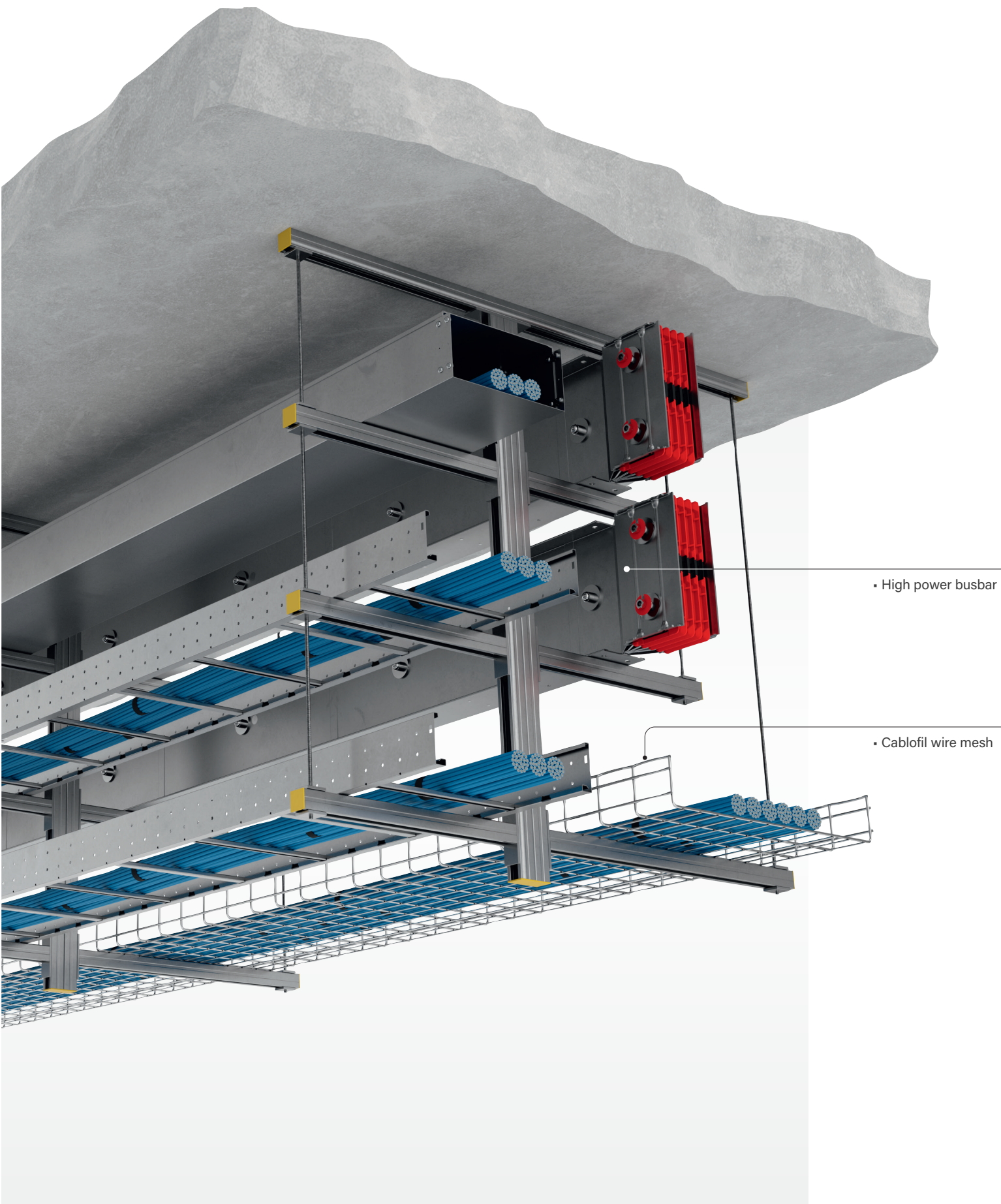
In combination with a range of accessories, it allows for quick and flexible installation.

The GLO-4 programme is available in both pre-galvanised and hot-dip galvanised versions.

• Salamandre

GLO-4 MEDIUM-DUTY LADDERS





GLO-4

LIGHT AND MEDIUM-DUTY LADDERS, QUICK TO INSTALL AND FLEXIBLE (continued)

COMPLIANCE

- Complies with **IEC 61537 (VDE E 0639) standard**
- Pregalvanised in accordance with **NEN EN 10346**
- Hot dip galvanised in accordance with **NEN EN 1461** (+/- 50 µm)
- **CE product**

ENVIRONMENT

- **PEP files available**

SAFETY

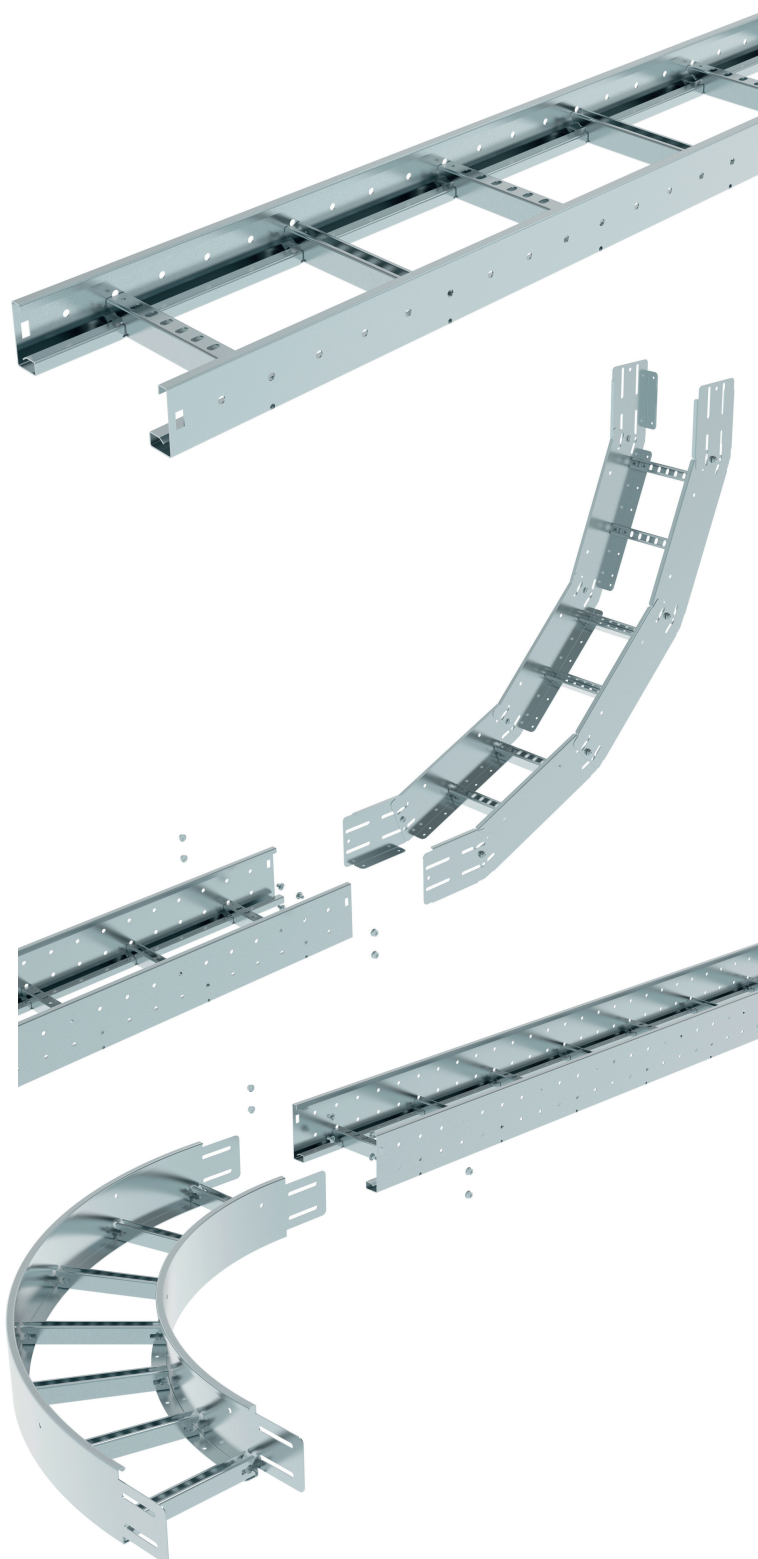
Safety during installation and fit-out

- Automatic couplers
- Slide-in fitting
- Return flange for personal and cable safety

Reduced risk

- Automatic and slide-in couplers ensure good earthing and system stability
- >300 mm bending radius on fittings

The right material for the right environment



DESIGN & MOUNTING

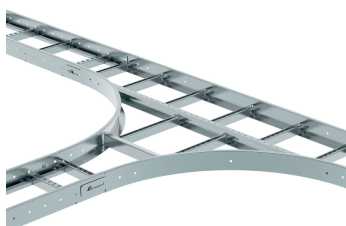
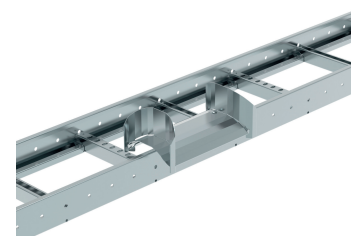
The range

- Ladders available in 2 heights (60 and 100 mm), 2 lengths (3000 and 6000 mm) and 5 widths (200, 300, 400, 500 and 600 mm)
- **Rungs alternately upward or downward**
- Distance between rungs: 100 (for optimal support), 200 or 300 mm
- Rungs of accessories are all mounted with the opening facing upwards with a fixed rung distance of 200 mm
- **Available on request:**
 - deviating rung distances for cable ladder
 - painted version, polyester epoxy powder coating

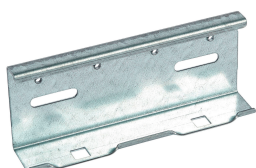
System advantages

- A tested and approved system for numerous applications
- Various **suspension systems** available
- Full set of **factory directional changes**

Optimal cable support and safety solutions

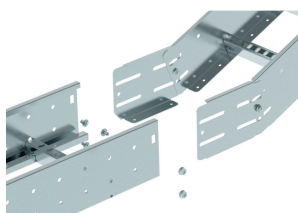


4 must-haves for optimum efficiency!



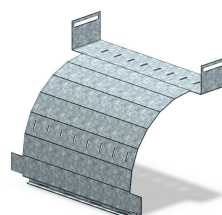
Auto coupler

- Screwless quick coupler
- IEC 61537 tested and certified
- Perfect earthing each time
- Large earthing surface



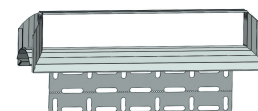
Slide-in fittings

- Can be installed without coupling plate
- Fitting radius >300 mm



F-BDO (Full bottom drop out)

- Hot dip galvanised, radius 150 mm
- Support with the level change of cables
- Can be mounted without using screws, independently of the direction of the rung opening



Universal SDO (Side drop out)

- Bottom and side radius guide
- Optional top cable retainer



FIND OUT MORE ABOUT
GLO-4 SOLUTIONS ON
OUR WEBSITE (catalogue,
technical information,
BIM objects, PEP files...)

SWIFTS

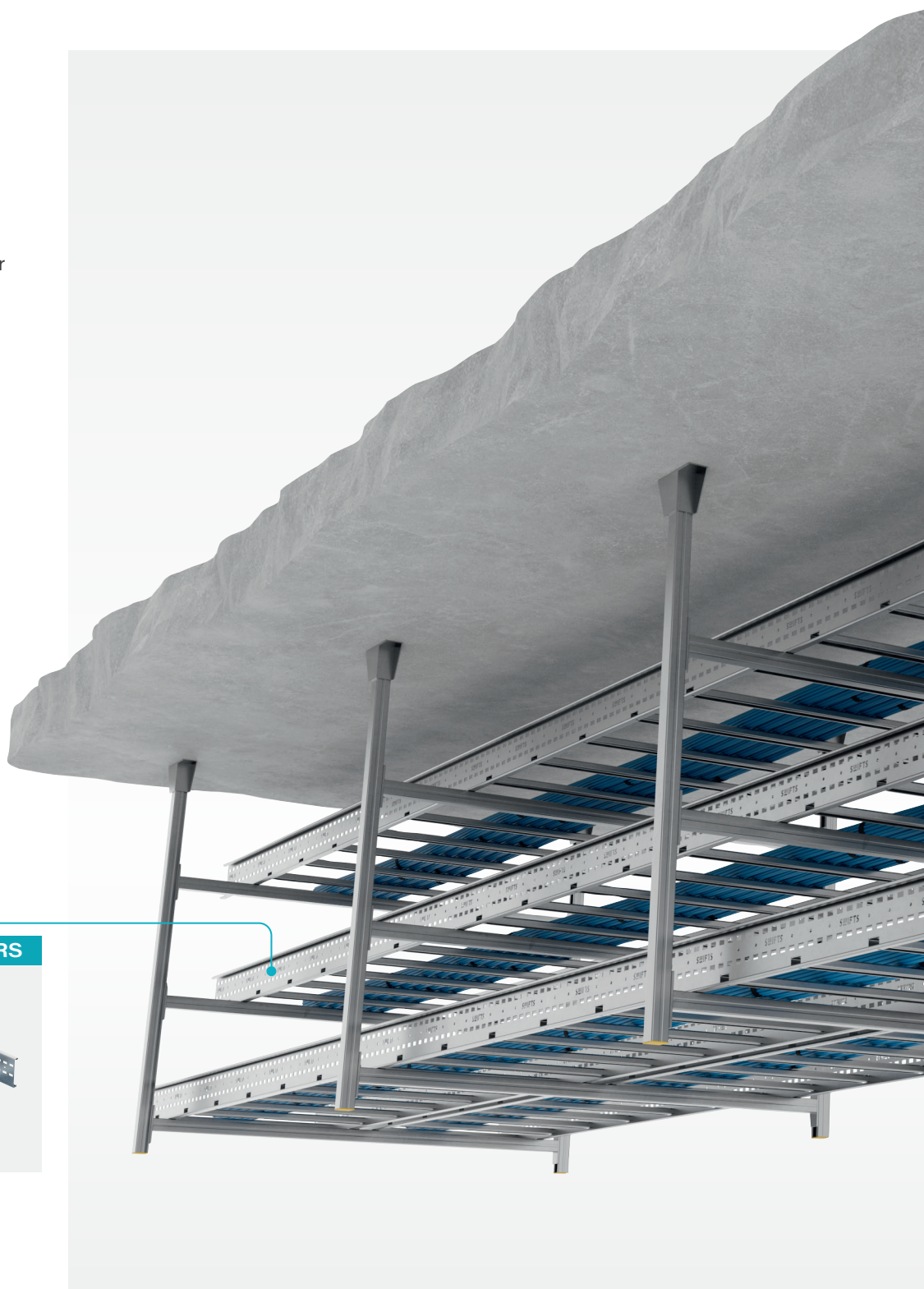
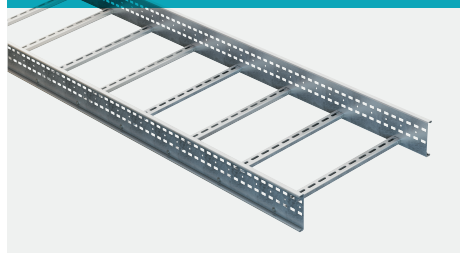
HEAVY-DUTY LADDERS FOR DATA CENTER EXCELLENCE

The Swifts range of cable ladders provides heavy-duty support for high-performance installations.

Swifts ladders are available in different depths, widths, finishes, and fittings which include built-in couplers.

Swifts ensure quick assembly, robustness, and long-term reliability for demanding data center environments.

SWIFTS HEAVY-DUTY LADDERS





SWIFTS HEAVY-DUTY LADDERS FOR DATA CENTER EXCELLENCE (continued)

COMPLIANCE

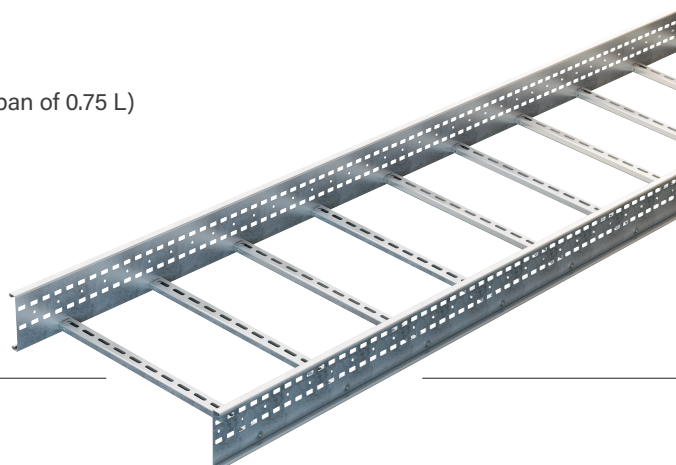
- Complies with **IEC 61537 standard** (Test type 1 with end span of 0.75 L)

- **DNV and CSA certified**

- **BEAMA member**



- **CPD certified**



ENVIRONMENT

- Solutions are designed and manufactured at **ISO 14001:2015 Environmental Management System** and **ISO 9001** accredited facilities
- Time-saving innovations **reducing energy usage on site**
- **PEP files available**

SAFETY

- **Tested** in accordance with **DIN 4102-12** (HDG, PG, SS)
- **Radius protection** using bends, tees, crossovers
- Outward facing return flange on straight lengths and fittings for **cable and installer safety**
- **Significant safe working loads achievable**
- **Available in several finishes for all environments**

PG

HDG

316L



DESIGN & MOUNTING

The range

- **Widths:** from 100mm up to 1200mm
- **Lengths:** 3m and 6m options
- **Rung spacing:** 300mm
- **Heights:** 100mm (Topaz), 125mm (Sapphire) and 150mm (Emerald)
- **Various radii fittings:** 300mm as standard; 450, 600 and 900 on request
- **Also on request:**
 - upward/downward alternate facing rungs
 - powder-coated finish to specific RAL number

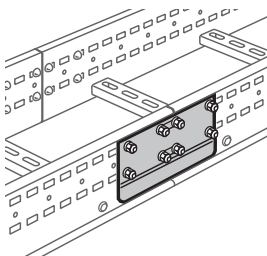
System advantages

- **A comprehensive system of slotted rail cable ladder** that became an established favourite in the UK, Ireland and further afield
- **Light and strong:** this wide span cable ladder is remarkably lightweight whilst ensuring significant safe working loads (SWL)
- **No additional couplers required** for connecting lengths to fittings: **up to 50% faster than other ladder systems** (see below)

Innovative time-saving installation features

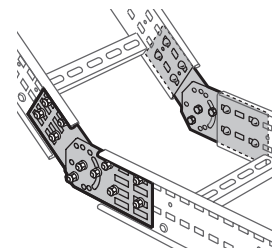
▪ Straight-length to straight-length couplers

Even when ladders are cut, the slots in the coupler will always align with the slots in the ladder side rail. Supplied in pairs with the appropriate quantity of fasteners.



▪ Vertical hinged connectors

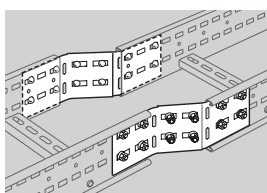
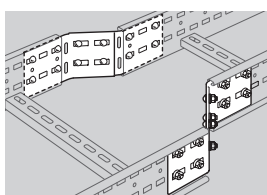
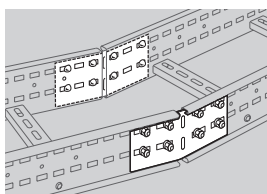
In addition to enabling you to fabricate fittings on site from cut lengths of cable ladder, these connectors also solve minor vertical mis-alignment problems.



▪ Bendable connectors

Enable you to:

- fabricate fittings on site from cut lengths of cable ladder
- form reducers on site if required
- correct minor mis-alignment problems
- couple lengths of ladder to form articulated bends



THANKS TO CONTINUAL PRODUCT DEVELOPMENT AND DESIGN INNOVATION, SWIFTS CABLE LADDER IS NOW OVER

50% FASTER TO INSTALL

WHEN CONNECTING FITTINGS TO LENGTHS!



FIND OUT MORE ABOUT SWIFTS SOLUTIONS ON OUR WEBSITE (catalogue, technical information, BIM objects, conformity certifications, fire performance and resistance declarations, PEP files...)

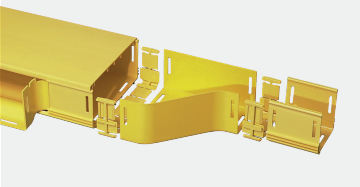
FIBER RACEWAY MEETING YOUR DEMAND IN FIBER PROTECTION

The Fiber Raceway system offers an enclosed, modular ducting solution for optimal fiber protection. Its flexible design, smooth routing, and tool-free assembly ensure safe and efficient fiber optic management, preventing damage and maintaining network integrity.

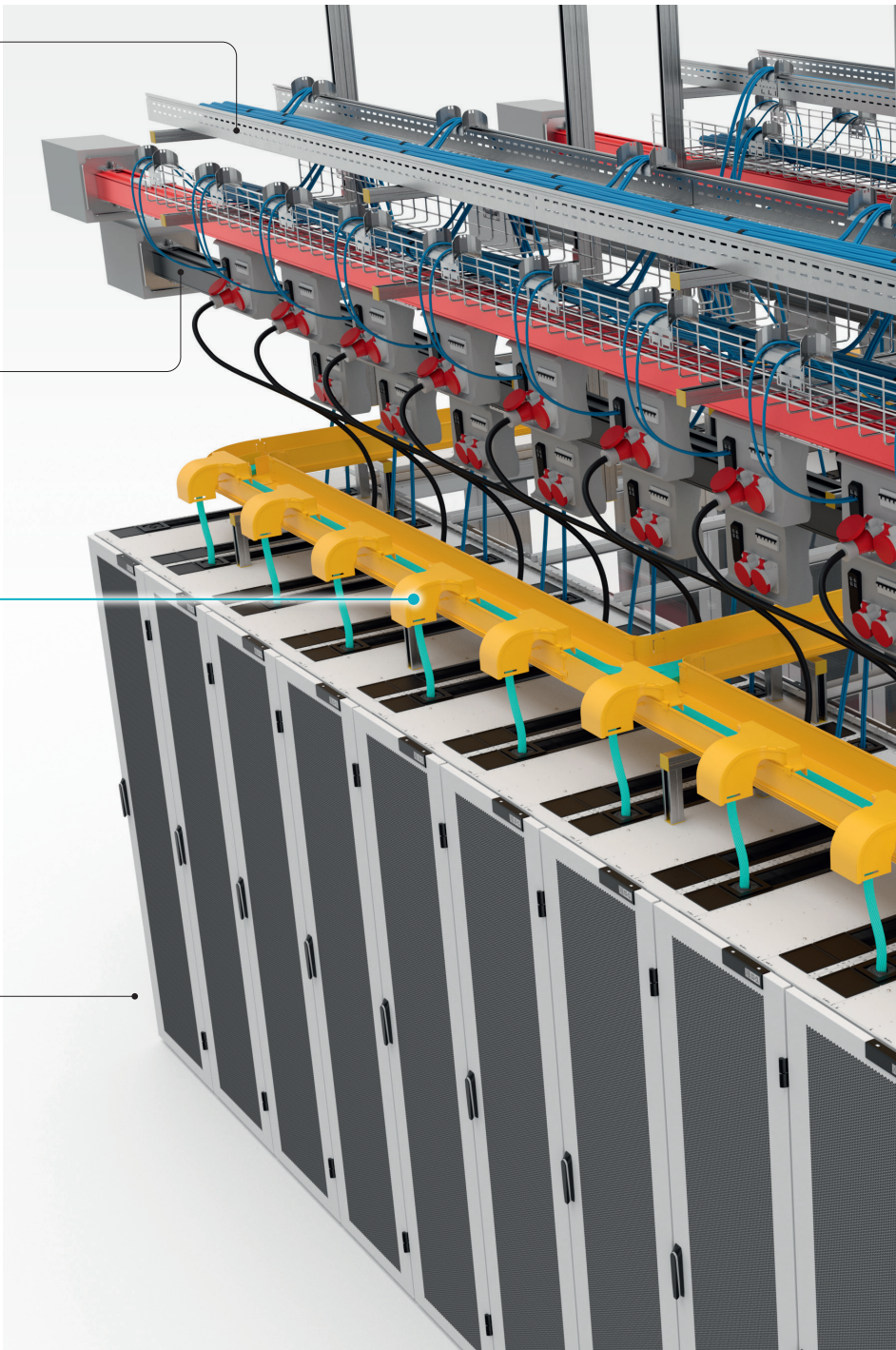
• P31 cable tray

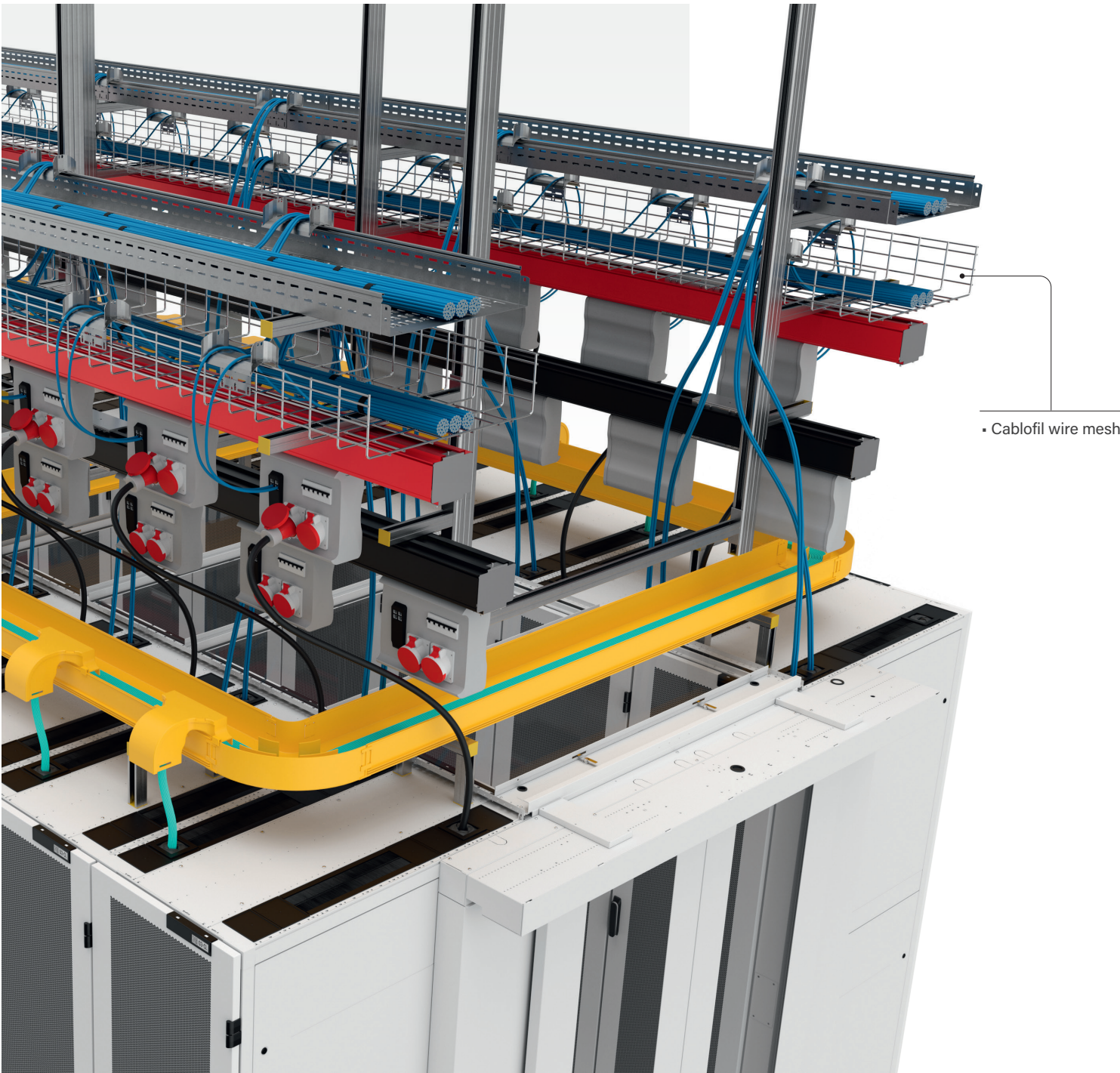
• Starline track busway

FIBER RACEWAY



• Minkels racks & containment





FIBER RACEWAY MEETING YOUR DEMAND IN FIBER PROTECTION (continued)

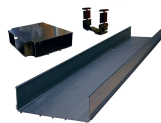
THE RANGE

The Fiber Raceway cable ducting is specifically designed for digital data distribution and is the ideal solution for ensuring optimal protection of fiber optic cabling and maintaining a highly efficient network at all times.

As the demand for fibers continues to grow rapidly, Fiber Raceway effectively segregates fiber cords from copper services, routing them through an enclosed duct raceway system, fulfilling the below demands.

BRIGHT YELLOW DISTINCTIVE DUCT COLOR

Black finish available



DIFFERENT SIZES AVAILABLE

Fiber Raceway is available in 2m lengths and 5 widths (50, 100, 220, 300 and 600mm)

PROTECTION AGAINST COMPRESSION

Fiber Raceway has been designed specifically with fiber optic cables in mind, ensuring they remain protected from crushing or compression

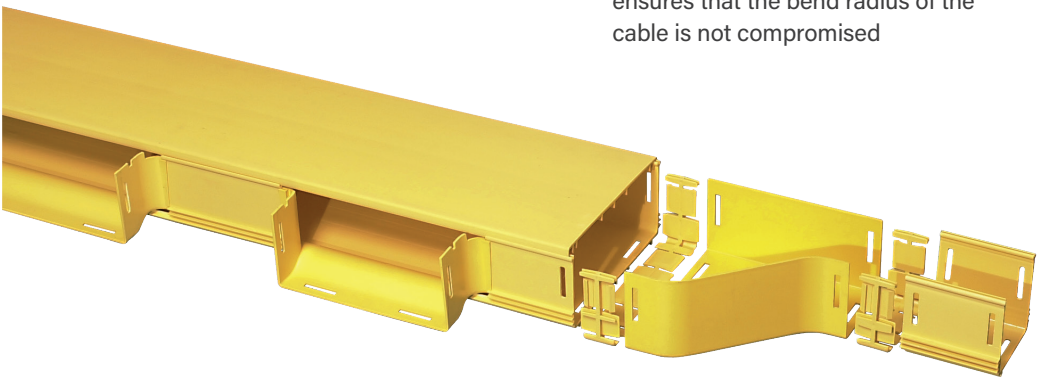
PROTECTION AGAINST BEND RADIUS

The unique design of the system protects the fiber from damage and ensures that the bend radius of the cable is not compromised



SAFETY & COMPLIANCE

- **Low smoke Zero Halogen, self-extinguishing:** avoids risk of harming staff and transmission equipment
- UL94-V-0 rated (50 mm UL94-V-1)
- Comply with **UL2024A standard** and **EU - RoHS requirements**
- **GR-63 Core Earthquake test** compliance
- All products are manufactured to the highest quality **ISO 9001** standards (Certified Quality Management System by BSI), complying with the stringent requirements of **UL2024A** and **ROHS**, and carry a **10-year warranty**



ANTICIPATING FUTURE NEEDS

Selecting a size that accommodates future expansion and additions to the ducting system is crucial. All too often, cable systems are underspecified to reduce installation costs. However, in an era of ever-increasing demand for data storage and processing, this approach results in a false economy. It is ultimately more cost-effective to plan for future needs and over-specify capacity rather than only addressing current requirements.



FULL RECYCLABILITY

- **TSCA compliant:** contains no toxic materials
- The **granulate Noryl™** used for Fiber Raceway is **fully recyclable (cradle to cradle)**: a very important issue for future data centers, meeting the requirements of tomorrow!

SIMPLICITY & FLEXIBILITY

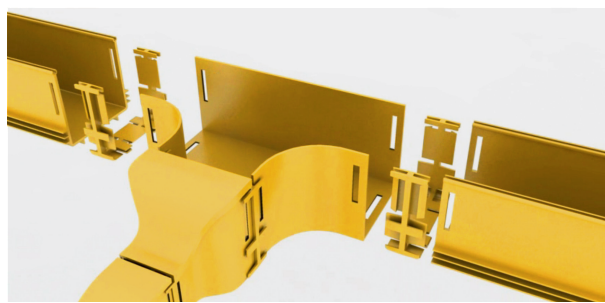
EASY AND TIME-SAVING INSTALLATION

- **Unique design:** pre-slotted duct and accessories simply snap together with slotted joiners
- Bottom, side and top **outlets available in many varieties**
- **Removable lids** to quickly change/add cables
- Slotless joiners available where ducting length needs to be shortened



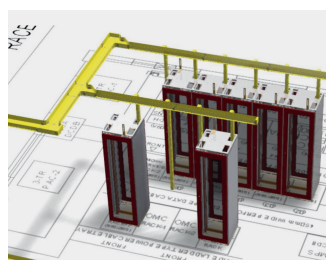
Slotted joiners require the ducting components to have slots on the ends so that it can be properly joined by clicking into place.

Slotless joiners require no additional tooling or slots to be made on the side of the duct. They only require a screwdriver for installation to tighten the joiner into place.



SERVICES

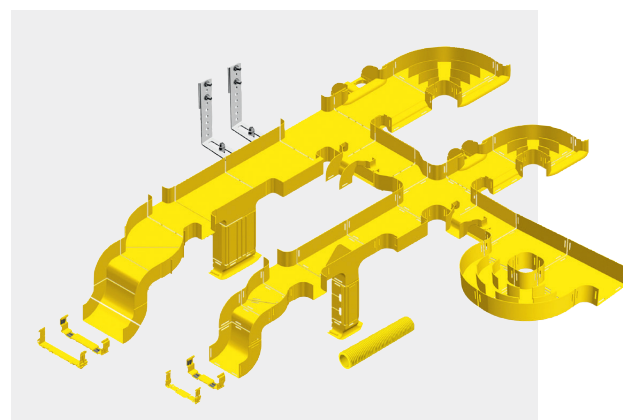
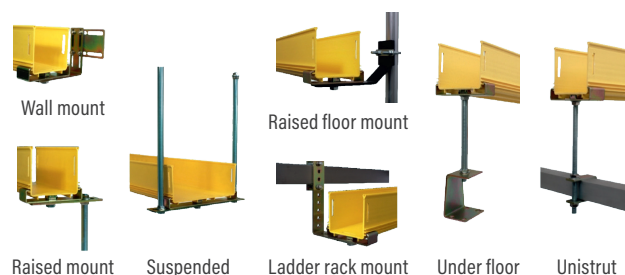
- Design services
- Design phase B.O.M.
- Deployment calculation
- On-site training/certification
- Original installation equipment



SEVERAL MOUNTING OPTIONS



Fiber Raceway can be **mounted from walls, ladder racks, channel support systems, on raised floor brackets or directly onto the top of racks or cabinets.** Over 350 individual components are available in 7 different sizes.



SIMPLE SIDE EXPANSION USING BREAKOUTS



- Various vertical drop-off options are available, designed to accommodate height restrictions and prevent unnecessary fiber stress
- Horizontal exits replace tees and crosses, ensuring faster installation

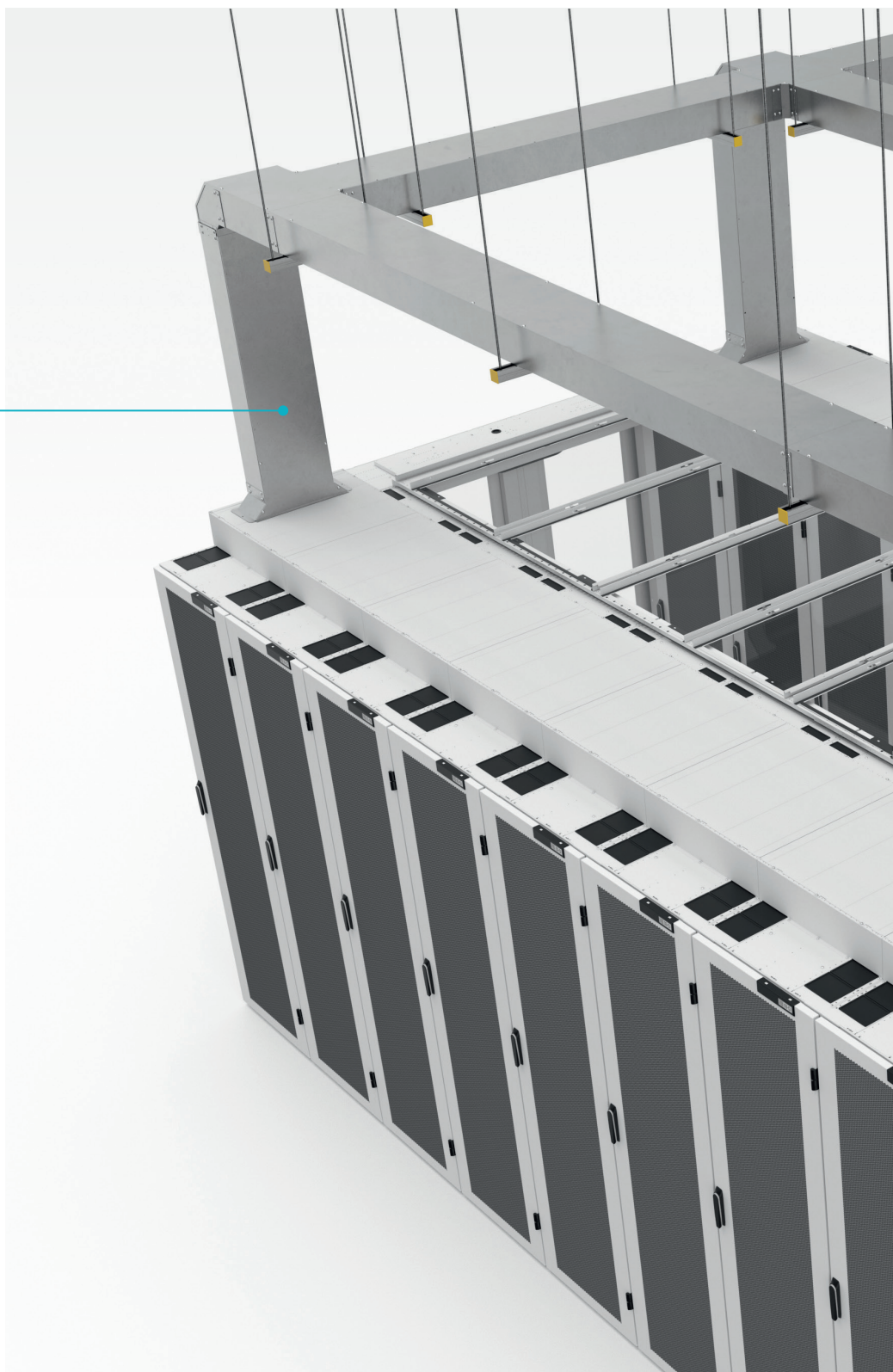
FIND OUT MORE ABOUT FIBER RACEWAY SOLUTIONS ON OUR WEBSITE
(catalogue, technical information, BIM objects, PEP files...)
www.legrand.com/datacenter

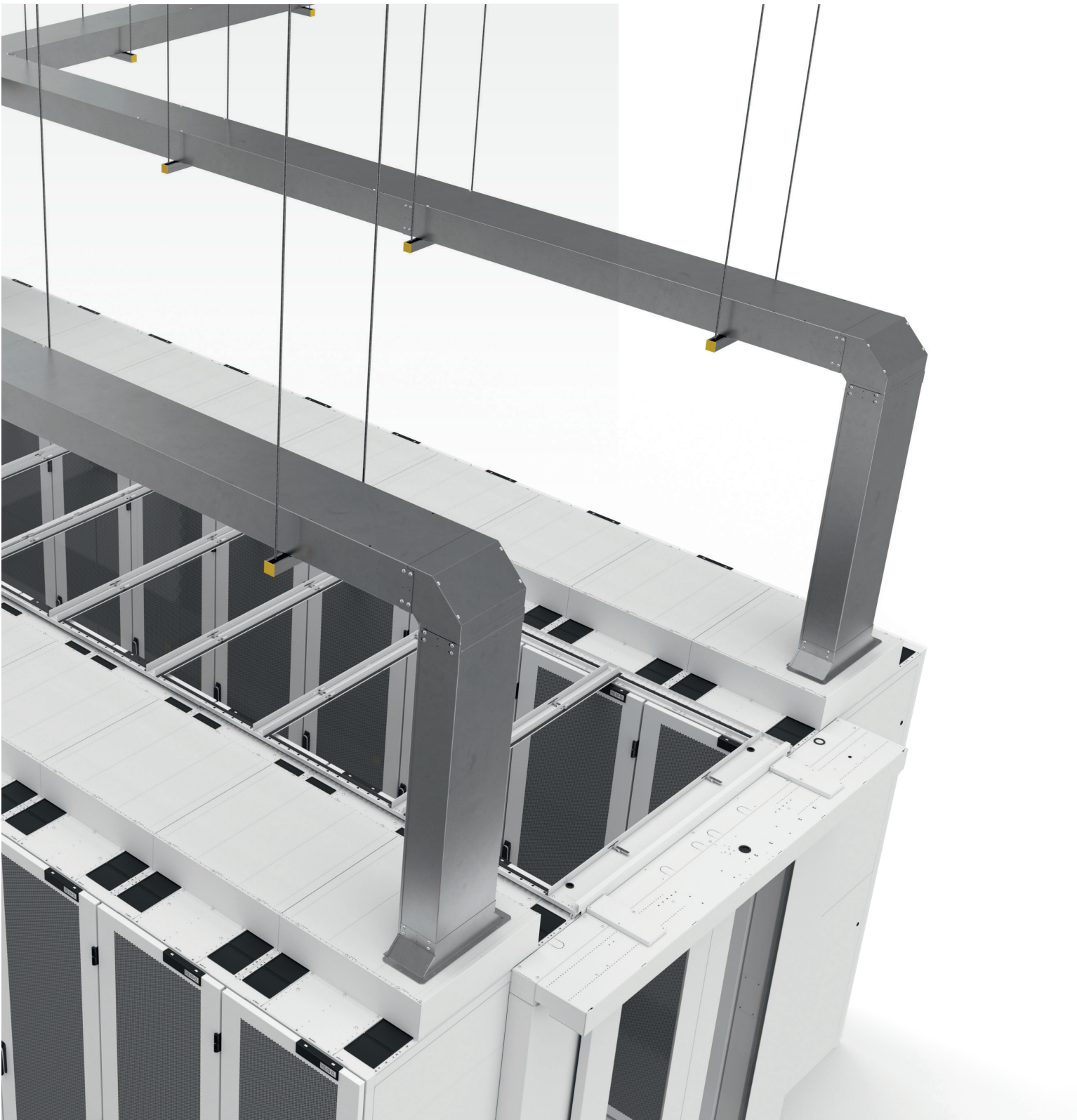
SALAMANDRE SECURITY TRUNKING

The Salamandre trunking systems provide high-performance cable protection with a fast-fit coupling system.

The pre-installed couplers decrease installation time by up to 50% while ensuring secure, IP-rated cable routing. This enhances the efficiency, safety, and security of your cable installations.

SALAMANDRE





SALAMANDRE SECURITY TRUNKING (continued)

COMPLIANCE

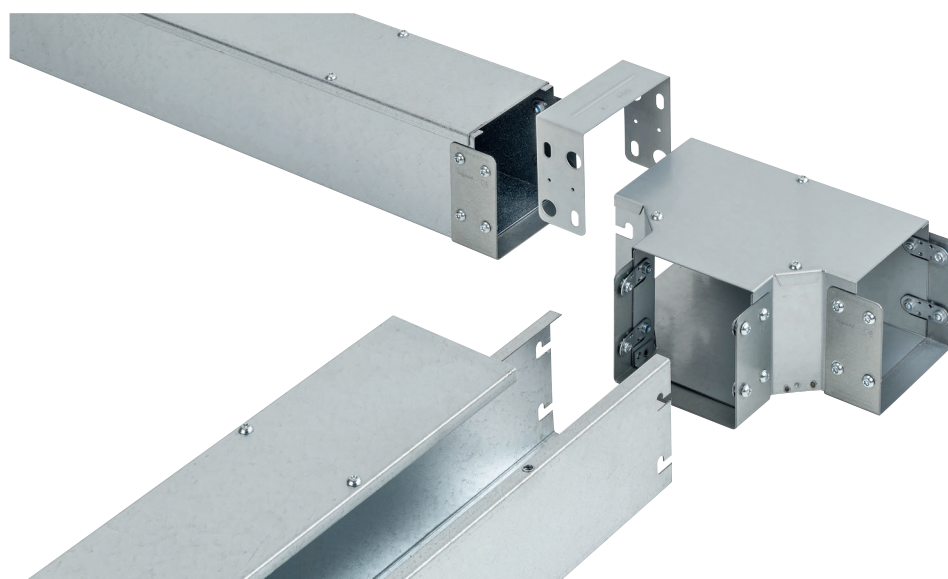
- Manufactured in accordance with **BS EN 50085-2-1**
 - Pre-galvanised to **BS EN 10346** as standard
 - Manufactured in the UK in an **ISO 9001** accredited factory
-

ENVIRONMENT

- Solutions designed and manufactured in sites that are accredited to **ISO 14001** : 2015 Environmental Management System
 - **Innovative coupling system** results in time and energy saved on site
 - **PEP files available**
-

DESIGN & MOUNTING

- **Seamlessly integrates** into existing data center infrastructures
- Supplied in **3m lengths** for sizes up to 300x300mm
- Supplied in **2m lengths** for extra large sizes (eg. 600x150)
- Lids and bodies supplied separately for **better material management**
- Lengths supplied with **couplers pre-installed, saving up to 50% in labour install**
- Pre-fitted avdel bushes **reduce the number of components required** for installing lids
- **All fittings** such as bends, tees, crossovers and reducers are **supplied with the couplers pre-fitted**



SAFETY

- MSTR trunking **fire-tested in accordance with DIN4102-12**
- Meets stringent **ingress protection (IP)** requirements for secure installations
- Designed for **long-term reliability** in high-security environments
- Ensures high-level **protection of cable management systems** against tampering and breaches

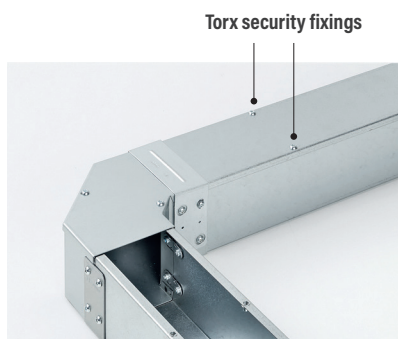


Tamper-proof design

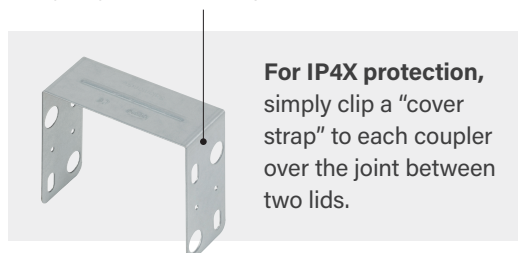
Clients requiring additional protection of their cabling infrastructure can specify Salamandre MSTR trunking to help prevent access to cable management systems and ensure data integrity.



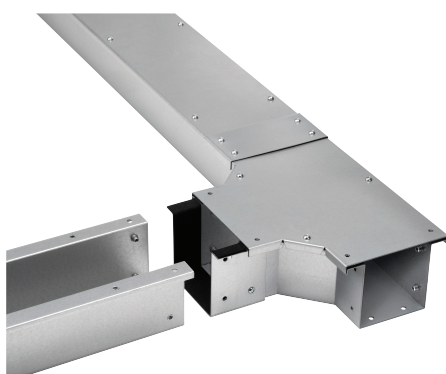
- **Redesigned security IP4X rated steel distribution trunking:** the screw lid IP4X system is supplied with all couplers pre-installed both on lengths and fittings, allowing for faster and safer installation



Security cover straps include modified fixing holes to allow for security screw fixing. M3 holes available for **identification tags** to identify if a system has been changed.



- **IP55 rated distribution trunking:** answers growing demands for trunking systems that are suitable for rooftop and outdoor installations, or for when cables must exit the facility



The CPC (clear powder coating) and the neoprene gasketed trunking lids offer **extended life expectancy** and greater cable protection.



FIND OUT MORE ABOUT SALAMANDRE SOLUTIONS ON OUR WEBSITE (catalogue, technical information, BIM objects, conformity certifications, fire performance and resistance declarations, PEP files...)

EZ-PATH® SAFEGUARDING CONNECTIONS, SIMPLIFYING SAFETY

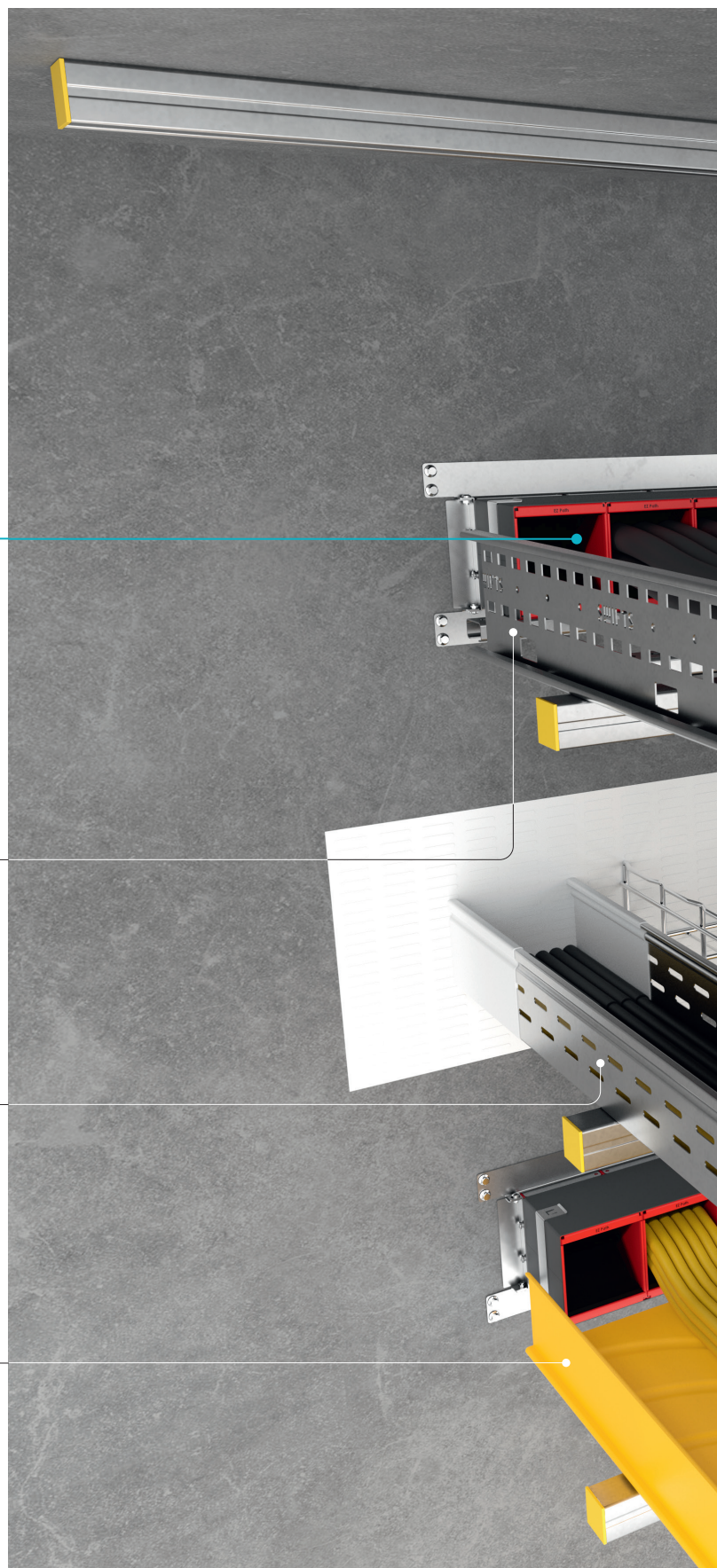
EZ-Path firestop devices offer a maintenance-free, self-sealing solution for cable penetrations. Designed to ensure certified fire protection, EZ-Path allows for easy cable additions and maintenance while ensuring compliance and reducing installation complexity.

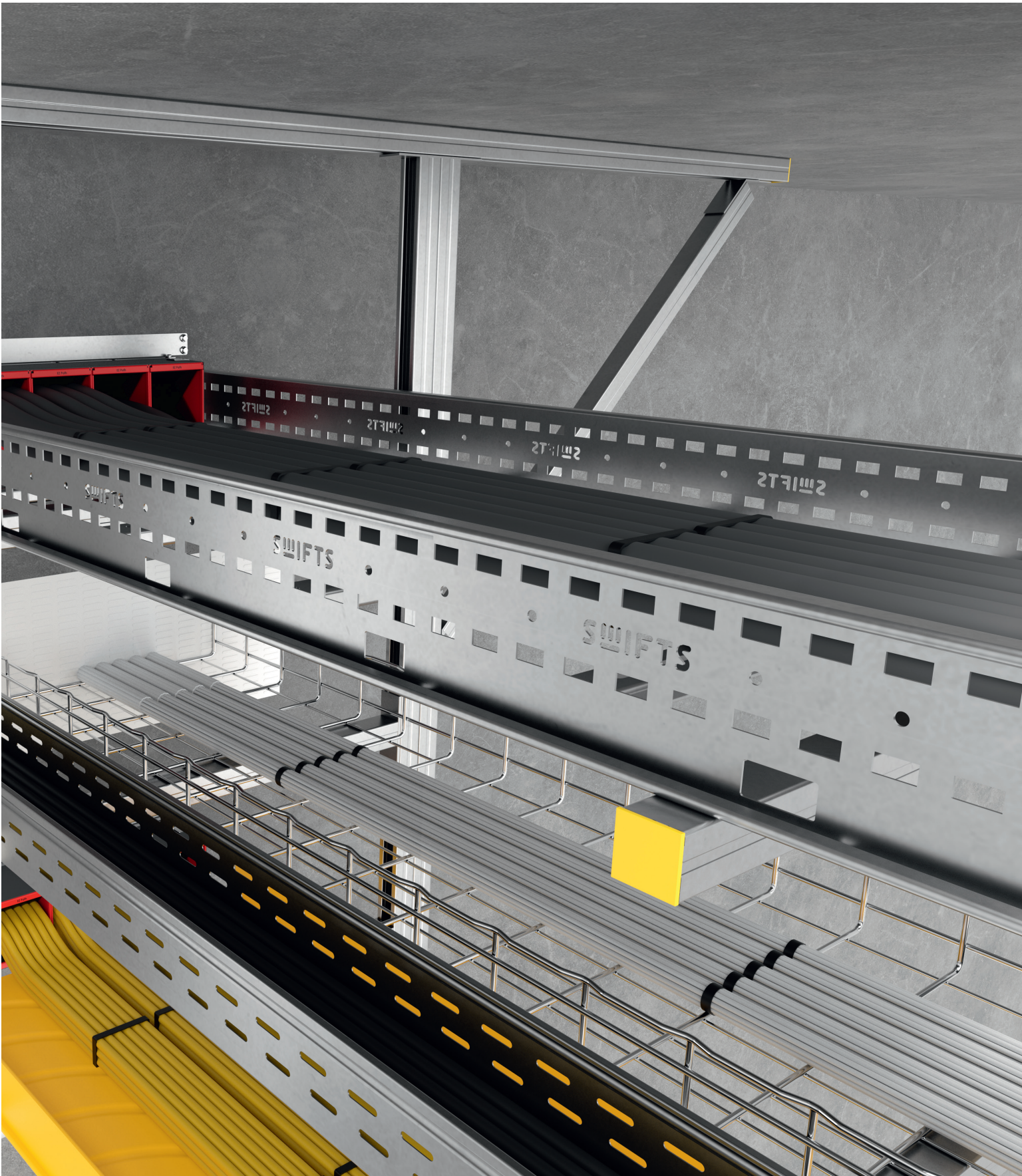


- Swifts heavy-duty ladders

- GLO-4 medium-duty ladders

- Fiber Raceway



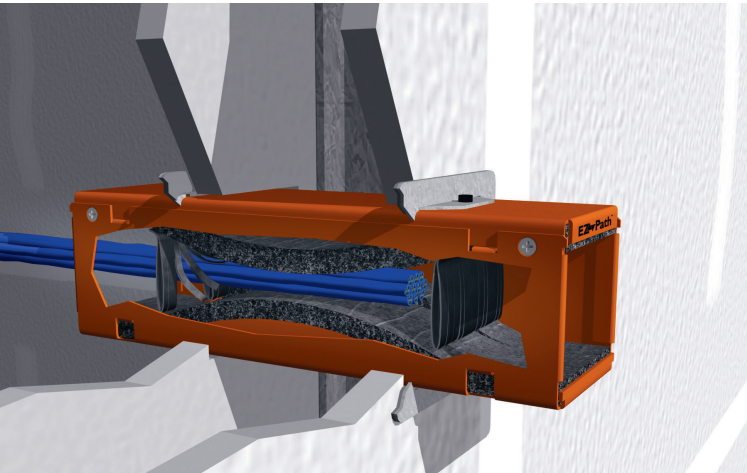


EZ-PATH® SAFEGUARDING CONNECTIONS, SIMPLIFYING SAFETY

THE RANGE

EZ-Path® is the only self-sealing mechanical firestop device for fiber optic and electric cables, and it doesn't need to be closed manually or serviced regularly.

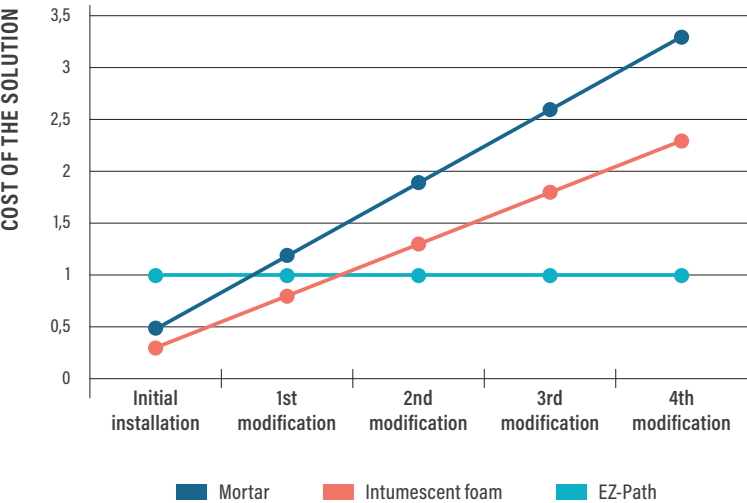
EZ-Path® is particularly suitable for infrastructures requiring modification while the fire barriers stay certified and operational. EZ-Path® mechanical fire stopping devices offer the client, specifier, contractor or fire inspector a worldwide solution for passive fire protection through walls and floors. Whether you have concrete, gypsum or sandwich panels, EZ-Path® will keep your infrastructure safe and certified.



CONTROL OF COSTS

The EZ-Path® system is by far the most economical firestop investment:

- easy to install and does not require any specially skilled staff
- during maintenance, cables can be added or removed without causing damage or debris. The fire rating remains intact and does not need to be restored
- right from the initial installation, you can be assured of a return on investment



SELF-SEALING AND SELF-ACTIVATING

EZ-Path® devices contain a factory-fitted intumescent lining that reacts to either flame or heat (at 177°C) by expanding to 800% of its original size, effectively closing the pathway.

COMPATIBILITY

EZ-Path® can be used with fire suppressing and extinction systems.

ACOUSTIC BARRIER

The sound attenuation of EZ-Path® modules is 45 dB, according to the STC Rating (Sound Transmission Class) that defines the acoustic seal of firestop products in accordance with the ASTM E90 standard.

DURABLE SOLUTION

- Firestop certification guaranteed throughout the entire lifetime of the electrical installation
- Guaranteed fire-stopping whether full or empty
- Fully certified system



THE ONLY 99%* SECURE FIRE BARRIER WITH NO MOVING PARTS AND NO HUMAN ACTION REQUIRED TO BE 100% FUNCTIONAL!

* When mounted and used correctly, vandalism and deliberate actions can cause failure.

SAFETY & COMPLIANCE

- Report certifying a lasting EI 120 min rating according to EN 13501-2 classification, with fire testing according to EN 1366-3 in all types of wall
- FM Approved: this solution meets the most stringent quality and safety requirements in the world
- The EZ-Path® firestop devices provide a guarantee against non-compliance statements for firestop feedthroughs at the end of on-site work



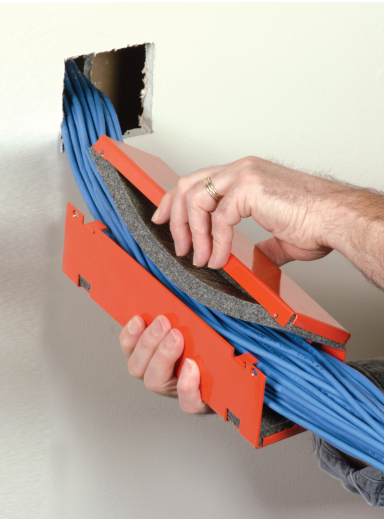
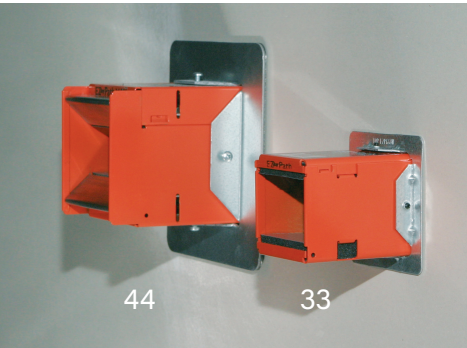
Area	Standard	Rating
Europe	CE marking EN 1366-3 ETA 130993	EI 120 (EN 13501-2)* EI 120 (ETAG 026-2)* UKCA marking
Switzerland	AEAI	EI 90*
Singapore	PSB TUV EN 1366-3	EI 120*
America	ASTM E814/ UL1479	F Rating – 4Hr i.e. E240

Note: the differences in ratings are explained by the differences in the protocols used in different standards
* EI 120 following models. Certificates available upon request.

SIMPLICITY & FLEXIBILITY

EASY INSTALLATION

- 2 module sizes: 33 (for restricted spaces in ceiling and floor voids), 44 (for all other applications)
- The range includes many innovative accessories designed for quick, easy installation, requiring no tools or particular qualifications
- The EZ-Path® assembly is fixed mechanically, providing the ideal solution for cable-pulling requirements
- An automatic mechanical cable feedthrough solution
- It is easy to pull cables, whether or not they come pre-fitted with connectors, using a simple wire puller



ADJUSTABLE INFRASTRUCTURE

- The modules can be assembled to create a sturdy unit (horizontal or vertical installation)
- This versatile system is suitable for any type of structure: concrete walls and floors, or lightweight partitions. Extensions are available for walls thicker than 250 mm
- Guaranteed flexibility without compromising the integrity of the fire wall: no training or tools are required to add equipment or change the configuration, and no dust or debris is generated
- Devices can be retrofitted if cabling is already installed

SERVICES

- On-site training when needed
- On-site check when needed

FIND OUT MORE ABOUT EZ-PATH SOLUTIONS ON OUR WEBSITE

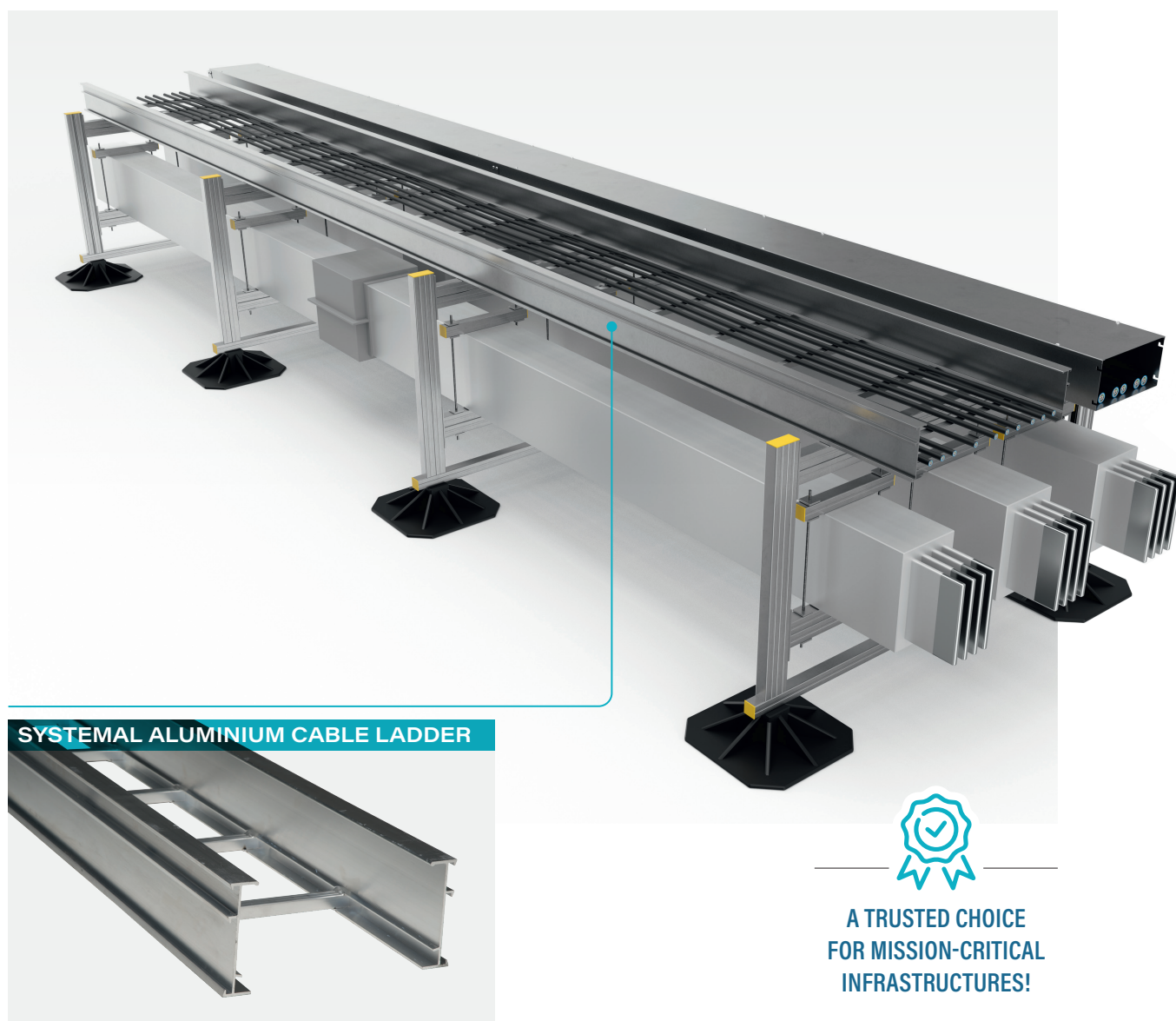
(catalogue, technical information, BIM objects, PEP files...)
www.legrand.com/datacenter

ENSTO SYSTEMAL ALUMINIUM CABLE LADDER THE OPTIMUM SOLUTION FOR DATA CENTER COOLING APPLICATIONS

The Ensto Systemal aluminium cable ladder program offers four series designed for various applications, ranging from light to heavy-duty.

Aluminium maintains its ductility and toughness at extremely low temperatures, as it does not undergo a ductile-to-brittle transition.

The high-quality EN AW-6060 T6 untreated alloy is inherently durable and suited for harsh environments. For extended lifespan requirements, optional anodization is available on request.



COMPLIANCE

- Conforms to IEC 61537
- EN AW-6060 T6 grade aluminium (EN 573-1)
- Meets the demanding needs of modern data centers, providing reliable and durable solutions for cable management in grey space areas
- Engineered to withstand challenging environments, including high humidity and corrosive conditions
- Designed for effortless installation
- Prioritizes secure cable routing and dependable performance, thus ensuring operational reliability

ENVIRONMENT

- Aluminium construction: ensures dependable, long-term performance in demanding environments
- Lightweight and fully recyclable material: minimises environmental impact, making it a sustainable and practical choice for cable management

SAFETY

- Corrosion-resistant aluminium: ensures lasting durability in humid and chemically exposed environments
- Reinforced structural stability: securely supports heavy cable loads, minimizing the risk of failure. Additionally, the lightweight design simplifies installation and enhances work safety
- Lightweight: only about a third of the density of galvanised steel, which means lower structural loads - an important consideration in infrastructure projects
- High conductivity: helps reduce unwanted electrical interference and ensures reliable grounding
- Paramagnetic material: aluminium quickly dissipates eddy currents, reducing hotspots induced by external fields

DESIGN & MOUNTING

- Compact design: maximises space efficiency without sacrificing performance
- Innovative profile design: simplifies installation, enabling quick and customisable configurations to fit any layout
- Sturdy bracket system: supports versatile mounting options

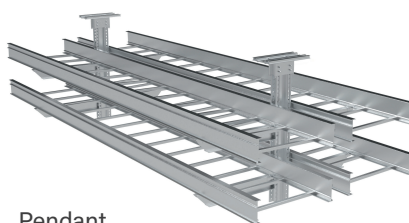
Multiple installation options

With capacities up to 28 kN / 3500 Nm

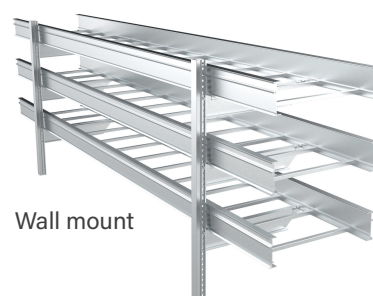


Gate suspension

(standard widths from 200 to 600mm – up to 900mm on request – and profile heights from 54 to 150mm)



Pendant suspension



Wall mount

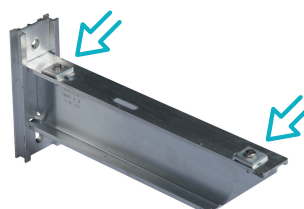
Pre-fabricated bends

Custom options on request



Cantilever arms

With pre-installed securing clamps



Hex socket bolts

Simple tightening using pre-installed hex socket bolts



LEGRAND DATA CENTER SOLUTIONS AT YOUR SIDE TO ENSURE RELEVANT CHOICES

INSTALLATION RECOMMENDATIONS

Design reliable, long-lasting installations by selecting the right cable tray material to suit your specific environment.

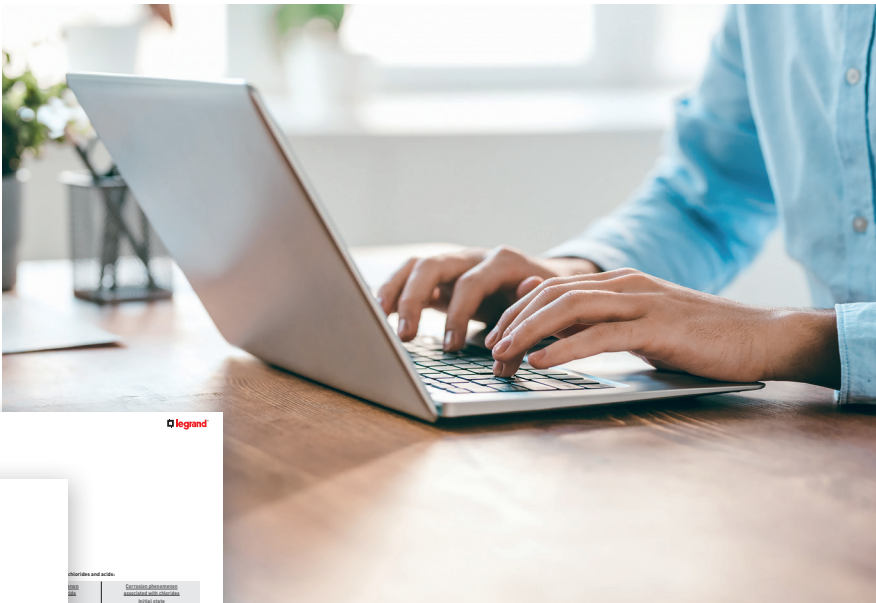
		Office & Reception	Grey Space	White Space	Outside (Roof)	Water Treatment
Pre-Galvanised Wire mesh: EN 10244-2 - Tray & Ladder: EN 10346	PG	✓	✓	✓	✗	✗
Electro Galvanised Wire mesh: DIN50961 - ISO 20-81	EZ	✓	✓	✓ (preferred solution)	✗	✗
Organically coated, Electro Galvanised after manufacturing (Black) ISO 20-81, DIN 50961	EZ+	✓	✓	✓	✗	✗
HR Pre Galvanised Wire mesh: EN 10244-2 - Tray & Ladder: EN 10346	HR	✓	✓	✓	✓	✓
Hot Dip Galvanised EN/ISO 1461	HDG	✓	✓	✗	✓	✓
Deep Galvanised Tray & Ladder: EN/ISO 1461	DG	✓	✓	✗	✓	✓
Stainless 316/304 EN 10088-2	304L 316L	✓	✓	✓	✓	✓
Aluminium	AL	✓	✓	✗	✓	✓
Powder coating (on demand)	RAL	Possible for corrosion protection and identification				

✓ Recommended ✓ Possible/Over-designed ✗ Not possible



A GUIDE AT YOUR DISPOSAL

In our cable trays technical guide, you'll find all you need to know about safety instructions, standards, materials, surface treatments, safe working loads, earthing, electrical continuity, fire resistance, and more to **ensure relevant and long-lasting installations!**



TECHNICAL GUIDE
AVAILABLE
ON OUR WEBSITE!

YOUR TRUSTED PARTNER IN DATA CENTER SOLUTIONS

Infrastructure powered by specialist brands

With ever-increasing demands for **AI, Big Data, Cloud computing**, and **IoT**, infrastructure has become the backbone of business growth. At Legrand, **we go further to understand your unique needs**. With **specialist brands, expert teams**, and a deep understanding of infrastructure challenges, our commitment to providing **tailored grey and white space solutions** at scale makes us the **global partner of choice** for high-performing data centers.

More than just meeting demands, **we go further** by helping you **optimize performance, enhance reliability**, and **improve efficiency** in every space.

MEET-ME ROOM

Passive data communication solutions, cabling of data centers, buildings and fiber optic infrastructures.

GREY SPACE

LEGRAND

Complete range of cable pathways and high performance, energy-efficient power solutions.

BORRI

Uninterruptible Power Supplies for industrial applications and data centers.

DAVENHAM

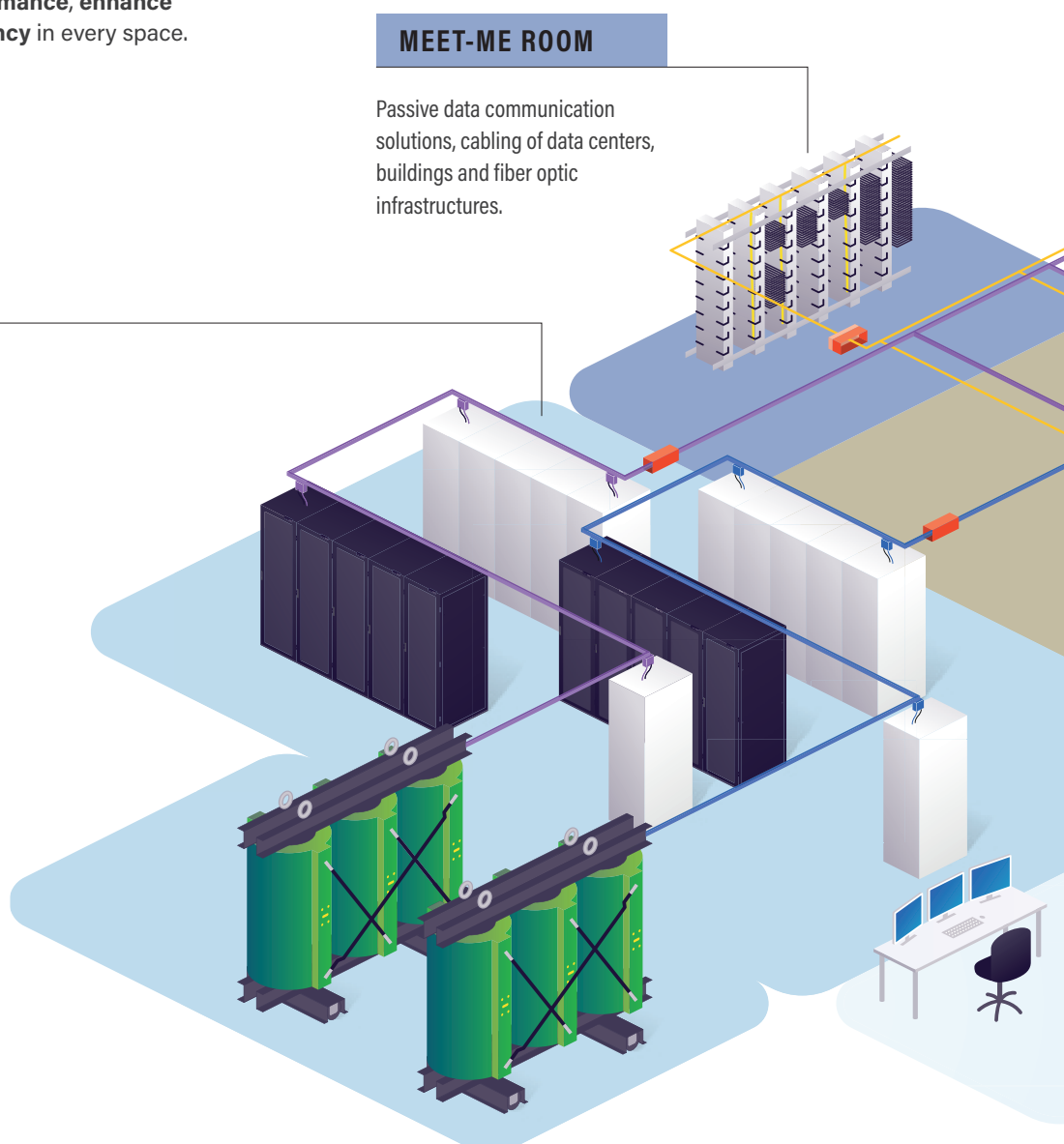
Designs and manufacture of custom low voltage innovative switchgear, offering reliable electrical control and power distribution systems.

POWER CONTROL

Uninterruptible power supply solutions for edge computing, co-location and facility power infrastructure.

ZUCCHINI

One of the most comprehensive ranges of cast resin transformers on the market.



LEGRAND

Complete global solutions for digital and electrical infrastructure.

CABLOFIL

Complete range of market-leading cable pathways.

GEIGER

Data center fiber optic infrastructures, data center design and DCIM (monitoring and management) service and implementation.

MINKELS

Turn-key hot/cold aisle containment and enclosures for data center infrastructures.

MODULAN

Fully customisable containment solutions with maximum flexibility to cover customer needs.

RARITAN

Intelligent PDUs, transfer switches, environmental sensors, serial consoles and KVM-over-IP Remote Access switches.

SERVER TECHNOLOGY

Customer-driven power, access and control solutions for monitoring and managing critical IT assets.

STARLINE

Starline has grown to become a global leader in busbar power distribution equipment.

USYSTEMS

Cooling products that enhance data center cooling and make global businesses' data centers more environmentally friendly.

WHITE SPACE

NOTES

[illegible]



#LegrandImprovingLives

Managing a data center is **complex**. It requires careful consideration of a range of factors to ensure **performance, reliability, scalability, and sustainability**.

To help you **navigate these challenges**, we offer tailored **grey and white space** solutions at scale to meet individual needs through our **specialist brands** that include **Minkels, Raritan, Server Technology, Starline, and USystems**.

Our approach combines **technical expertise** with a deep commitment to **sustainability**, helping you **optimise data center performance** while reducing environmental impact. We build enduring partnerships with our clients grounded in **trust, collaboration, and shared aspirations**. Whether **improving reliability** or **increasing efficiency**, we work to ensure that every detail is correct.

With our support, you can approach the **future with confidence**, knowing that your data center is ready for what's next.

Legrand: We go further

Headquarters

128, avenue de Lattre de Tassigny
87045 Limoges Cedex
France
Tel.: + 33 (0) 5 55 06 87 87

**DATA CENTER
SOLUTIONS**

