



MISSION CRITICAL BROCHURE

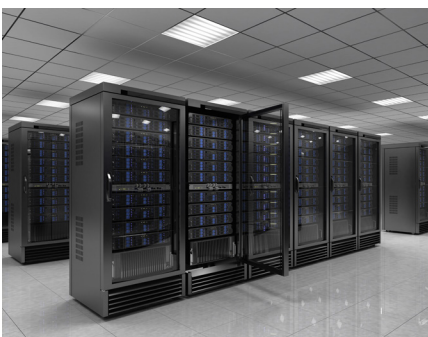
FLEXIBLE, CUSTOMIZABLE POWER SOLUTIONS
FOR MISSION CRITICAL SUCCESS

#LegrandImprovingLives

Starline®
A brand of **legrand**



THE MOST CRITICAL DECISION FOR MISSION CRITICAL FACILITIES



By their very nature, mission critical and data center facilities are susceptible to downtime. With Starline Track Busway, power distribution has been revolutionized. This simple, versatile, and economical solution for supplying power is unique because Starline Track Busway can be tapped instantly at any location, without any downtime.



HAVING STARLINE TRACK BUSWAY POWER YOUR MISSION CRITICAL FACILITIES GIVES YOU THE ADVANTAGE:

- Field-proven in data centers for over 30 years
- Plug-in units can be positioned at any point along the busway for maximum versatility
- Customization of plug-in units for any environment
- Easy installation of plug-in units — just insert and turn
- No complicated mechanisms or levers
- Most reliable plug-in design with the least amount of electrical connections from busway to plug-in unit
- Interchangeable plugs for systems include: 250, 400, 500, 600, 800, 1000 & 1200/1250 T5
- Multiple busway feed options: end, top, center — for installation flexibility
- Available in lengths up to 10 or 20 feet (3 or 6 meters) for faster installation



REDUCED FACILITY CONSTRUCTION COSTS

- Labor savings mean installation is less expensive
- Eliminates costly change orders and outside labor costs for electrical specialists
- Lower cost of ownership

FASTER INSTALLATION

- Get building projects up and running faster
- Add, remove or relocate power easily and quickly with no downtime

FLEXIBILITY FOR THE FUTURE

- Plug-in units can be disconnected and connected without de-energizing the busway
- Requires minimal routine maintenance

MORE CHOICES

- Customizable for any environment, space or power requirement
- Designed specifically for mission critical and data center environments — T5 plug-in units are compatible with all T5 systems
- Scalable, reusable and customizable lengths, sizes, colors, and configurations to meet your unique specifications

FIELD SERVICES

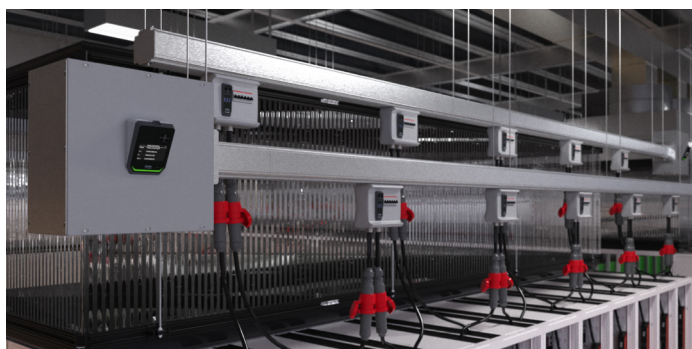
- On-site support and system startup
- Ongoing support plans and warranty options
- Metering services and integration
- Load bank tap-off rentals

THE POWER OF SIMPLICITY

With ever-increasing demands on IT infrastructure, data center owners and operators are challenged with keeping pace. One solution has been to increase the power density within the facility. This continual cycle of increasing power requirements for the critical equipment in the racks and cabinets has translated into more and more cables under the raised-floor or overhead.

Starline Track Busway is a self-contained system, so there is no jungle of wires to obstruct air flow. This makes it one of the most energy-efficient systems you can buy in today's mission-critical environment. Starline is modular, build-as-you-need, and equipped for high-density electrical distribution. And it's designed and rated to meet and exceed the rigorous reliability demands and thermal requirements of mission critical facilities.

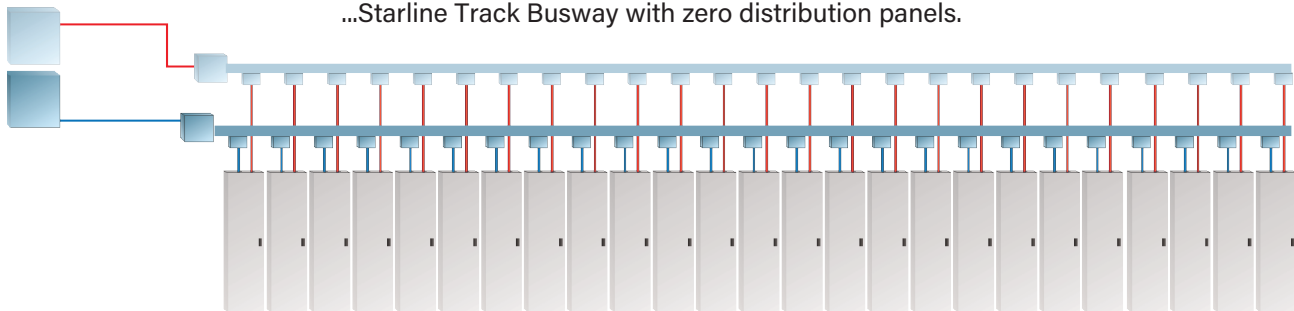
Starline also eliminates all the distribution panels associated with traditional systems, so changes and additions can be easily made without shutting off power. The all-in-one, self-contained plug-in units can also be inserted anywhere along the busway in almost any NEMA configuration and have fewer mechanical joints for reliability and efficiency.



Compare the confusion of traditional RPP/PDUs with whips under the floor to...



...Starline Track Busway with zero distribution panels.



Specifications	TRACK BUSWAY SYSTEM RATINGS								
Ampacity	100/160	225	250	400	500	600	800	1000	1200/1250
Rated Voltage	600 AC or DC	600 AC or DC	600 AC or DC	600 AC or DC	600 AC or DC	600 AC or DC	600 AC or DC	600 AC or DC	600 AC or DC
Rated Short Circuit Capacity	22kAIC	22kAIC	35kAIC	42kAIC	42 kAIC	65kAIC	65kAIC	75kAIC	75kAIC
Conductor Type	Copper	Copper	Copper	Copper	Copper	Copper Contact	Copper Contact	Copper Contact	Copper Contact
Frequency Ratings	50/60Hz	50/60Hz	50/60Hz	50/60Hz	50/60Hz	50/60Hz	50/60Hz	50/60Hz	50/60Hz
Testing Criteria	UL857, IEC 61439	UL857, IEC 61439	UL857, IEC 61439	UL857, IEC 61439	UL 857, IEC 61439	UL857, IEC 61439	UL857, IEC 61439	UL857, IEC 61439	UL857, IEC 61439
Housing Material	Extruded Aluminum	Extruded Aluminum	Extruded Aluminum	Extruded Aluminum	Extruded Aluminum	Extruded Aluminum	Extruded Aluminum	Extruded Aluminum	Extruded Aluminum
System Weight Straight sections based on 4 pole	1ft (.3m) = 3.4lbs (1.54kg)	1ft (.3m) = 3.4lbs (1.54kg)	1ft (.3m) = 4.1lbs (1.86kg)	1ft (.3m) = 9.5lbs (4.31kg)	CU 1 ft (.3 m)= 11.5 lbs (5.52 kg)	CU 1ft (.3m) = 19.6lbs (8.89kg) CU/AL 1ft (.3m) = 11.5lbs (5.52kg)	CU 1ft (.3m) = 19.6lbs (8.89kg) CU/AL 1ft (.3m) = 11.5lbs (5.52kg)	1ft (.3m) = 21lbs (9.53kg)	1ft (.3m) = 21lbs (9.53kg)
Support Distance	Max distance 10ft (3m)	Max distance 10ft (3m)	Max distance 10ft (3m)	Max distance 10ft (3m)	Max distance 10ft (3m)	Max distance 10ft (3m)	Max distance 10ft (3m)	Max distance 10ft (3m)	Max distance 10ft (3m)
Available Lengths	Up to 20ft (6m)	Up to 20ft (6m)	Up to 20ft (6m)	Up to 20ft (6m)	Up to 20ft (6m)	Up to 10ft (3m)	Up to 10ft (3m)	Up to 10ft (3m)	Up to 10ft (3m)



THE LEADING EDGE OF SAFETY TRANSFORMATION IN POWER DISTRIBUTION

Starline's Remote Plug-in Actuator (RPA) is a first-of-its-kind technology designed for enhanced levels of flexibility and safety in mission critical environments. As power densities increase and infrastructure changes create higher incident energies, the need for operator safety has never been greater. The RPA allows operators to remotely engage busway plug-in units while remaining outside of any potential incident energy area. As a result, it's never been safer or more convenient to add, relocate or remove circuits while under load.

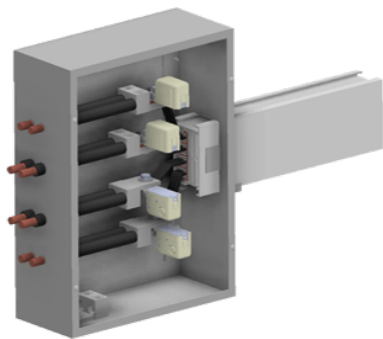


REAL-TIME MONITORING FOR PEAK EFFICIENCY

Because of the market’s growing need for energy efficiency, energy monitoring systems are more critical than ever. The Starline Critical Power Monitor (CPM) offers an enhanced monitoring package that will allow you to monitor, integrate and display more data center power information easily and reliably.

THE STARLINE CPM OFFERS:

- End feed and branch circuit models
- Display and non-display versions
- Wired Ethernet and serial communications are standard, optional 802.11n Wi-Fi connectivity
- Ability to use both serial Modbus and Ethernet-based protocols simultaneously
- Daisy-chain Ethernet available
- Optional temperature monitoring
- Both AC and DC versions available



TEMPERATURE MONITOR

Real-time temperature data

Eliminates need for periodic IR scans

Data for end user analysis via webpage

CORDED CPM

Add metering capabilities to your existing installation

No modifications needed to existing infrastructure

METER CONFIGURATION TOOL

Update a single meter quickly or multiple meters simultaneously

Auto-discovery detects multiple meters without needing to address individual devices

RECERTIFICATION AND EXTENDED WARRANTY PLANS

Starline's recertification and extended warranty options provide best-in-class coverage for all your Starline products and systems.

Our extended warranty plans safeguard your investment, extending beyond the standard warranty period and giving you peace of mind. And our recertification programs are designed to reduce risk and minimize downtime, ensuring your system operates smoothly and efficiently.

Whether your busway has been in operation for years or you're transitioning to a new location, Starline is here to help. Choose from one of our flexible one to four-year plans, or have your system recertified, today.

FEATURES

- Various extended warranty options available
- Covers replacement of defective parts
- Includes full on-site inspection and re-commissioning

BENEFITS

- Ensures warranty is available at the time of site turnover
- Prevents unexpected expenses for repairs or replacements
- Promotes recycling and reuse of previously installed system



To learn more visit :

www.legrand.com/datacenter

 **Legrand Data Center Solutions**

©2025 Legrand.