



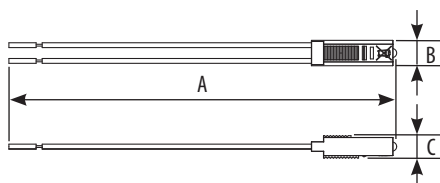
Use

LED for backlighting

Range

Designation	Item
white LED - 230V~ - high luminosity for daytime load notification	K4743V230T
white LED - 127V~ - high luminosity for daytime load notification	K4743V127T
red LED - 230V~ - high luminosity for daytime load notification	K4743V230R
white LED - 230V~ - night signal	LN4743/230T
white LED - 12/24V~ - night signal	LN4743/12T
white LED - 127V~ - night signal	LN4743/127T
blue LED - 230V~ - night signal	LN4743/230B
blue LED - 12/24V~ - night signal	LN4743/12B
green LED - 230V~ - night signal	LN4743/230V
green LED - 12/24V~ - night signal	LN4743/12V
green LED - 127V~ - night signal	LN4743/127V
amber LED - 230V~ - night signal	LN4743/230A
amber LED - 12/24V~ - night signal	LN4743/12A
amber LED - 127V~ - night signal	LN4743/127A
blue LED - 230V~ - night signal	H4743/230B
blue LED - 12/24 V~ - night signal	H4743/12B

Overall dimensions (mm)



	A	B	C
K4743...../ LN4743...../ H4743....	135	6	6.4

Technical characteristics

- Material characteristics

Case: PC
(Polycarbonate)
UV resistant. Self-extinguishing:

850° C / 30 s for insulating parts holding live parts in place 650° C / 30 s for other parts made of insulating materials

- Electrical characteristics

K4743V230T - K4743V230R
LN4743/230T - LN4743/230B - LN4743/230V - LN4743/230A
H4743/230B

Voltage: 230V a.c.
Power consumption: 0.3W

K4743V127T
LN4743/127T - LN4743/127V - LN4743/127A

Voltage: 127V a.c.
Power consumption: 0.15W

LN4743/12T - LN4743/12B - LN4743/12V - LN4743/12A
H4743/12B

Voltage: 12V a.c.
Power consumption: 0.02W

Voltage: 24V a.c.
Power consumption: 0.05W

- Climatic characteristics

Storage temperature: - 10° C to + 70° C
Use temperature: - 5° C to + 35° C

Cleaning

Clean the surface with a cloth.
Do not use acetone, tar-removing cleaning agents or trichloroethylene.
Caution: Always test before using special cleaning products.

Standards and approvals

Compliance with standards IEC/EN 60669-1.
Refer to e.catalogue.