

1. GENERAL CHARACTERISTICS

Flush-mounting boxes for masonry used to install a ceiling-mounted centre point luminaire.

2. TECHNICAL CHARACTERISTICS

- Case: green polypropylene
- Dimensions: Ø 65 mm (inner diameter)
- Supplied complete with cover and pipe hook for suspension up to 25 kg
- Fitted with an independent duct with M6 threading for fixing on the frame in conformity with NF C 15-100
- Self-extinguishing
- Entries:

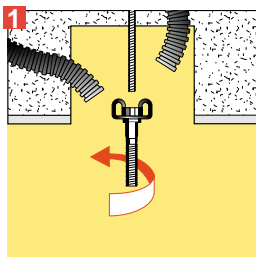
Cat. Nos.	Sides	Bottom
892 56	2 x 16 / 2 x 20	2 x 16 / 2 x 20

3. USE

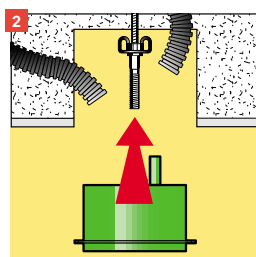
For the centre point, use a threaded rod with nut M6, length 160 mm, for attaching to the frame Cat. No. 892 86

4. MOUNTING

- Mounting luminaires
In conformity with standard NF C 15-100, it is essential to attach the centre point box to the structure
The independent duct of Batik centre point boxes facilitates their installation

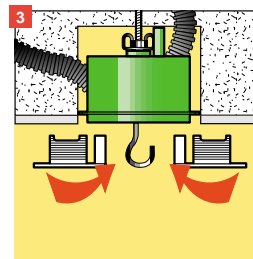


The independent duct is screwed onto the threaded rod sealed in the frame



The box is then simply clipped onto the duct
The tubes no longer need to be rotated
The box no longer directly supports the weight of the light fitting

4. MOUNTING (continued)



The two-part cover provides a perfect finish

5. DIMENSIONS (mm)

