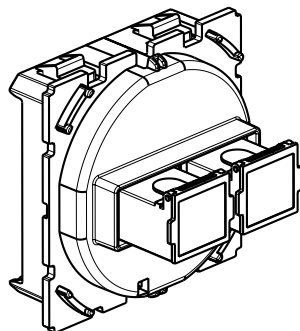


Celiane™

Cat. No(s) : CM0320

Optical Socket - SC/APC Simplex

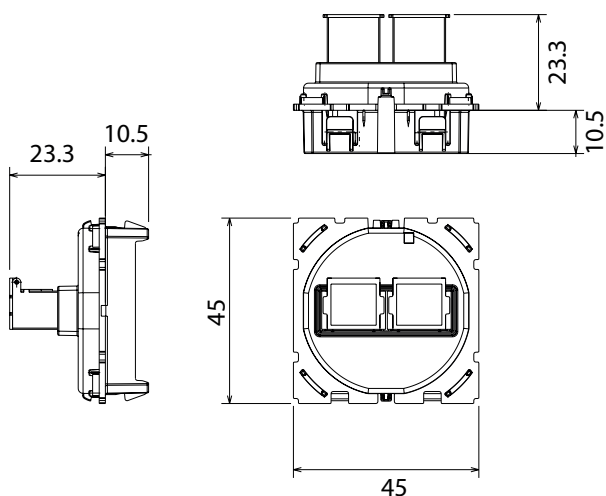


1. USE

The optical fiber socket is equipped with 2 SC/APC simplex pass-throughs with protective shutters. To be completed with a universal Batibox support and combined with a cover plate and a finishing plate. It can be installed flush-mounted (in a flush-mounting box with a minimum depth of 50 mm) or surface-mounted (on a surface-mounting frame). It allows the connection of 2 fibers (equipped with their connector). It is delivered with protective caps.

Number of modules : 2

2. OVERALL DIMENSIONS



3. TECHNICAL CHARACTERISTICS

3.1 Connector Characteristics

- Singlemode SC/APC
- Insertion loss: 0.2 dB
- Endurance (500 insertions): maximum increase of 0.2 dB

IK4
IP21

3.2 Climatic Characteristics

- Operating and storage temperature: -40°C to +85°