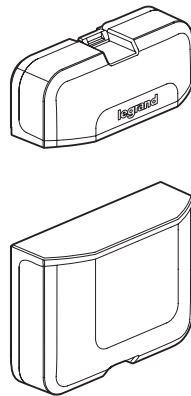


Opening detector

Cat. No(s): 0 485 75

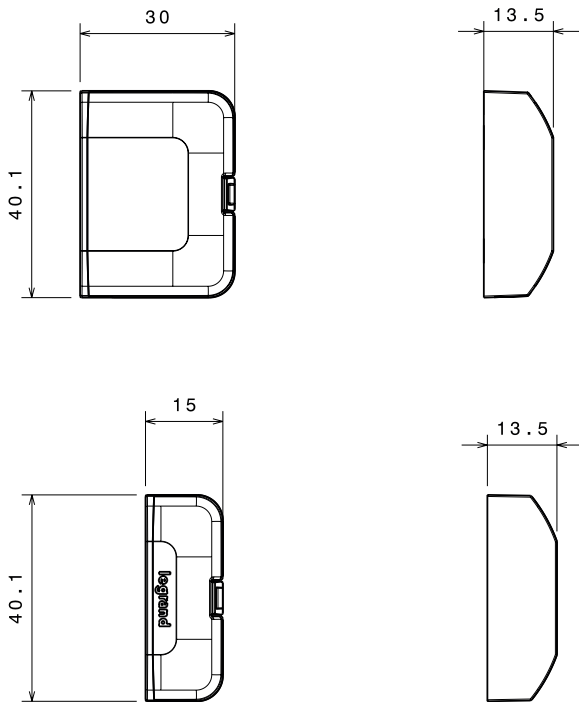


1. USE

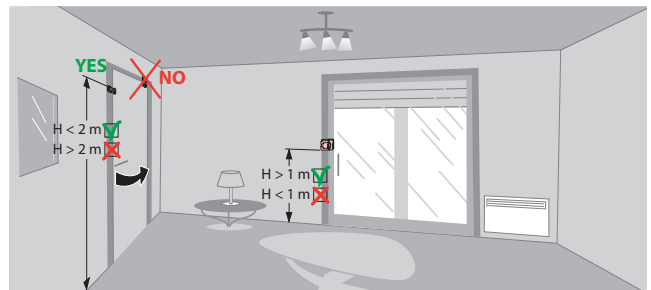
Radio-controlled magnetic opening detector which sends its status via a radio frequency command (Greenpower) when there is a change of status: opening or closing

- Magnetic part for placing on the moving part (door or window)
- RF sensor with its support for placing on the fixed part of the building (door/window frame)
- Zigbee PRO technology Green Power function used to send the open or closed status, and also the battery voltage

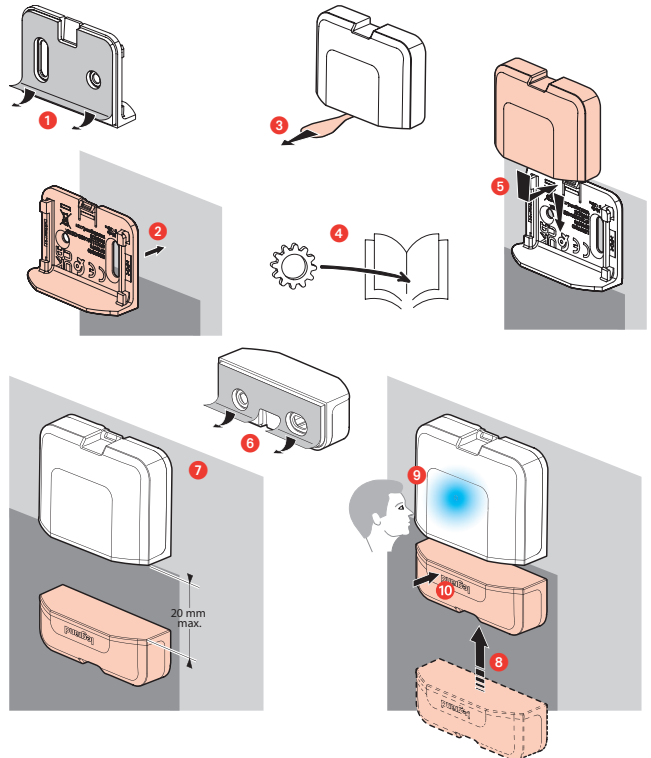
2. DIMENSIONS (MM)



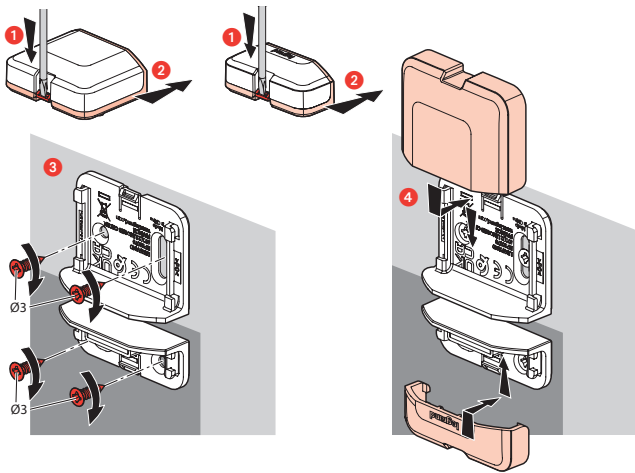
3. INSTALLATION



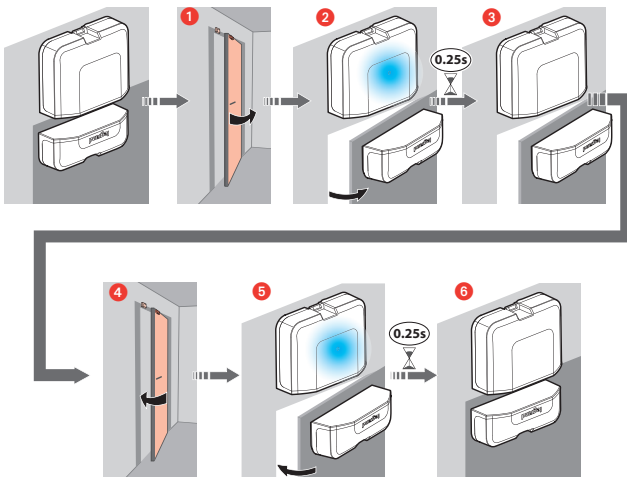
3.1 DOUBLE-SIDED INSTALLATION



3.2 INSTALLATION WITH SCREWS (NOT SUPPLIED, OPTIONAL)



4. OPERATION



5. TECHNICAL CHARACTERISTICS

5.1 Mechanical characteristics

Protection against impacts: IK 04
 Protection against solid bodies/liquids: IP 20
 IP 40 assembled product

5.2 Material characteristics

Casing: Polycarbonate

5.3 Electrical characteristics

CR2032 3 VDC Lithium battery
 Life: 8 years with 25 openings a day
 Zigbee radio technology: frequency 2.4 GHz to 2.4835 GHz
 RADIO performance: 150 m min. range in unobstructed space, point to point
 Power level: < 10 mW
 Default Zigbee channel: 11
 Certified Zigbee PRO technology, Green Power function (two-way communication: not available).
 IEEE 802.15.4 (LR-WPAN).

5.4 Climate characteristics

Usage temperature: +5°C to +45°C
 Storage temperature: +5°C to +45°C

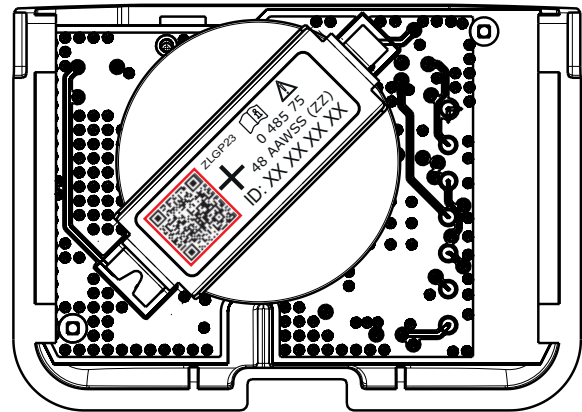
6. PROGRAMMING

6.1 PAIRING

6.1.1 PAIRING WITH A TOOL

Requires a tool (software, app, etc) connected to the receiver Zigbee network, communicating on channel 11 and capable of exploiting and communicating this data to the destination receiver(s) (pairing):

a - Scan the QR Code on the back (on the battery):



b - Depending on which tool is available, decode the QR CODE pattern with the fields below:

The QR CODE structure is as follows:

**"G\$K:ZLGP23\$O:XXXXXXXXXXXXXXXXXXXXXXXXXXXXXXXXXXXX
 XXXXXXXXXXXX%HS\$:YYYYYYYY"**

With:

In bold: the fixed prefixes and separators which are common to all products.

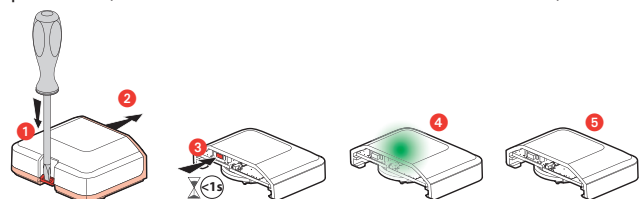
In plain text: variables which are unique to products

- after the "K:": the product Greenpower model (ZLGP23 = Door and window opening sensor)
- after "O:": the unique security key with 32 unique random characters (W) and 4 CRC characters (X)
- after the first "S:": the SourceID (Y)

If the paired receiver status doesn't change, complete the FACTORY RESET operation in Section 6.3, and try again.

6.1.2 MANUAL PAIRING

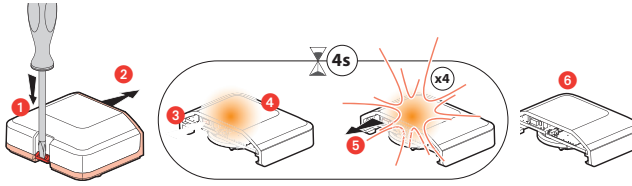
⚠ Caution, if you select this mode, the QR Code data can no longer be used (not possible to pair with a tool): Initiate the receiver pairing procedure (see the manufacturer instructions for more details).



To check that pairing has worked, open/close a door or window (see Section 3) and check the receiver status.

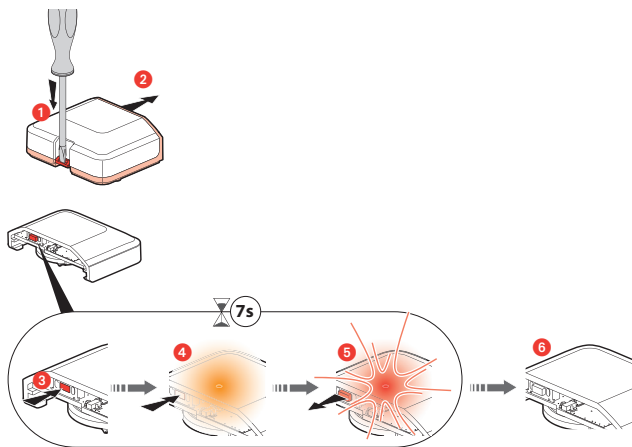
6.2 CHANGE CHANNEL

If the receiver is not on channel 11:



The product has switched to the next channel.
Repeat the above operation, keeping the correct channel hopping order: 26, 15, 20, 25, 12, 13, 14, 16, 17, 18, 19, 21, 22, 23, 24, 11, 26, 15, etc.
Then repeat the pairing operation explained above.

6.3 FACTORY RESET



! Caution, if you perform this operation, the data exchanged during manual pairing will be lost, and the product will revert to using its initial data contained in the QR CODE for pairing with a tool.

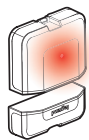
7. BATTERY STATUS



New battery



Medium/low battery



Battery needs to be changed

8. CARE

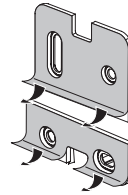
Clean the surface with a cloth.
Do not use acetone, tar-removing cleaning agents or trichloroethylene.
Resistant to the following products: Hexane (EN 60669-1), methylated spirit, soapy water, diluted ammonia, bleach diluted to 10%, window-cleaning products, pre-impregnated wipes.

Caution: Always test before using other special cleaning products.

The product must not be painted.

9. ACCESSORIES

Supplied with:
Double-sided adhesive pads



10. STANDARDS AND APPROVALS

10.1 EU DECLARATION OF CONFORMITY

LEGRAND declares that the radio-electric equipment type (0 485 75) complies with directive 2014/53/EU.
The full text of the EU declaration of conformity is available on the following website: www.legrand.com/ecatalogue

10.2 CMIM DECLARATION OF CONFORMITY

The full text of the CMIM declaration of conformity is available on the following website: www.legrand.com/ecatalogue

10.3 UKCA DECLARATION OF CONFORMITY

For the Arteor range of products only.
The full text of the UKCA declaration of conformity is available on the following website: www.legrand.com/ecatalogue

10.4 CONNECTIVITY STANDARDS ALLIANCE CERTIFICATION



certified by connectivity standards alliance

Model: ZLGP23