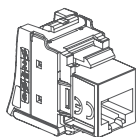
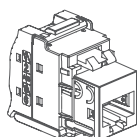


## Linkeo C Series RJ45 connectors and panel to be equipped

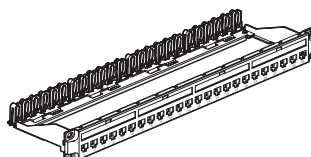
Cat.No(s): 6 329 25/26/27/28 - 6 328 50



6 329 26/27/28 (UTP)



6 329 25 (STP)



6 328 50

### CONTENTS

### Page

1. GENERAL CHARACTERISTICS .....	1
2. POSITIONING .....	1
3. INSTALLATION .....	2
4. PANEL TECHNICAL CHARACTERISTICS ....	2
5. CONNECTOR TECHNICAL CHARACTERISTICS .....	2
6. DIMENSIONS .....	2
7. TYPICAL RJ45 CONNECTION.....	3
8. STANDARDS .....	3
9. PERFORMANCES .....	3

## 1. GENERAL CHARACTERISTICS

Panel system to be equipped with up to 24 Keystone RJ45 connectors.

- Keystone RJ45 connectors for toolless assembly (Cat 5e UTP, Cat 6 UTP, Cat 6<sub>A</sub> UTP/STP).

- 19" panel - 1 U - Black (RAL 9017).

Universal mounting in all racks or cabinets with automatic earthing on unpainted uprights. Painted uprights can be connected to earth with a cord and a screw connection.






Locating pin for pre-positioning the panel.

Equipped with rear cable guide to hold cable during maintenance

Supplied with sheet of labels for marking connectors.

Each connector can be removed individually.

- Each RJ45 connector is suitable for flush-mounting and surface-mounting boxes of minimum depth of 40mm.

Description	Cat.No	Weight (g)
 Panel to be equipped with up to 24 RJ45	6 328 50	536
 Set of 24 Cat 5e UTP RJ45 connectors	6 329 28	228
 Set of 24 Cat 6 UTP RJ45 connectors	6 329 27	228
 Set of Cat 6 <sub>A</sub> UTP RJ45 connectors	6 329 26	498
 Set of 24 Cat 6 <sub>A</sub> STP RJ45 connectors	6 329 25	693

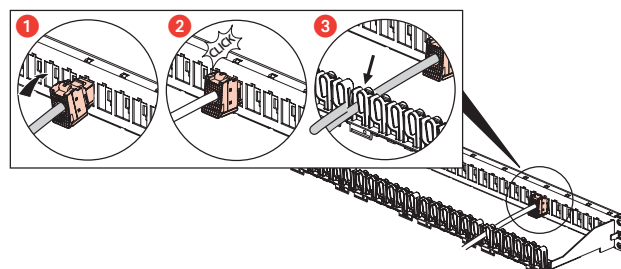
## 2. POSITIONING

Connectors are connected at the rear without a special tool.

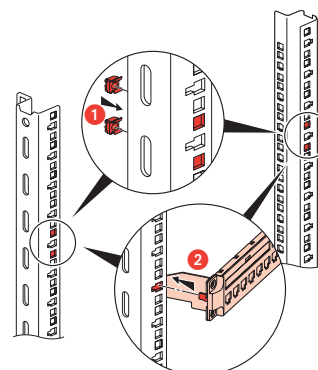
- Connectors clip onto the panel individually

No need to fix with a cable tie: the cable stays in the cable guide on the panel.

### Connector mounting



### Panel mounting

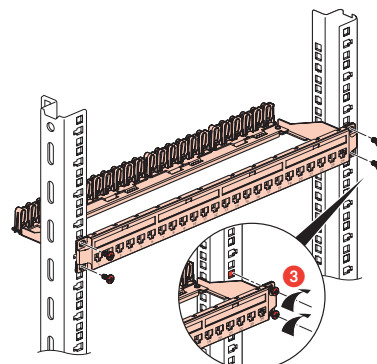


Ingenious: the system allows the panel to be pre-positioned and held in place without the need for screws.

Once inserted in the uprights, it holds firmly in place.

Now you can easily assemble the panels.

Screw each panel in place once everything is connected up correctly.



### 3. INSTALLATION



For more details on the applicable distance limits, see the length assumptions in ISO/IEC 11801-2, ISO/IEC 11801-3 and ISO/IEC 11801-5

### 4. PANEL TECHNICAL CHARACTERISTICS

#### 4.1 Material characteristics

- Galvanised sheet steel
- Steel (screw)
- ABS
- Polycarbonate

#### 4.2 Electrical characteristics

Panel automatically earthed to the uprights via an unpainted contact area.

Earthing lug on the panel if an additional earth is needed.

#### 4.3 Mechanical characteristics

Fixing to the uprights with M6 screws and 9.5x9.5 cage nuts (supplied).  
IK03  
IP20

#### 4.4 Climate characteristics

Operating temperatures: -10°C to +60°C  
Storage temperatures: -10°C to +70°C  
Humidity: 5% to 85% (non-condensing)

### 5. CONNECTOR TECHNICAL CHARACTERISTICS

#### 5.1 Material characteristics

- Contacts: Bronze, gold/nickel coating, minimum gold thickness 0.8 µm
- Nickel/bronze
- ABS
- Polycarbonate
- Shielding (STP version): ZAMAK metal alloy, copper/nickel coating

#### 5.2 Electrical characteristics

Breakdown voltage: 1000 V  
Contact resistance: 20 mΩ  
Insulation resistance: 500 MΩ at 100 VDC  
Compatible with "PoE" remote powering

#### 5.3 Mechanical characteristics

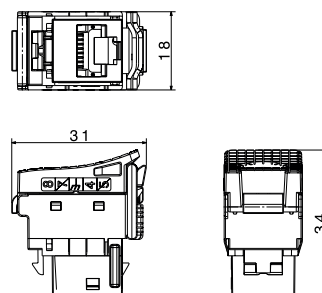
Maximum number of connections/disconnections operations: 5.  
Endurance: 2500 operations (plug insertion/removal)  
IK03  
IP20

#### 5.4 Climate characteristics

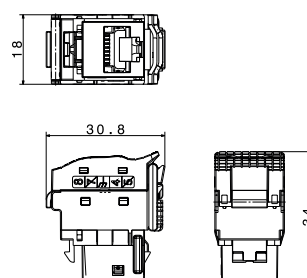
Operating temperatures: -10°C to +60°C  
Storage temperatures: -10°C to +70°C  
Humidity: 5% to 85% (non-condensing)

### 6. DIMENSIONS

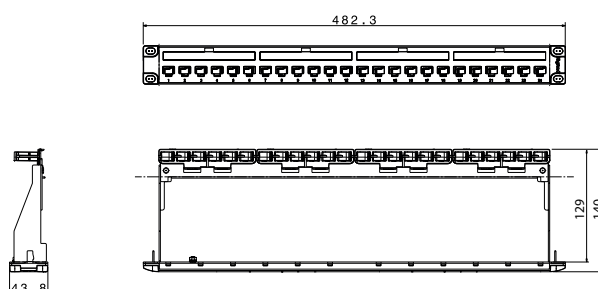
#### UTP connector dimensions



#### STP connector dimensions

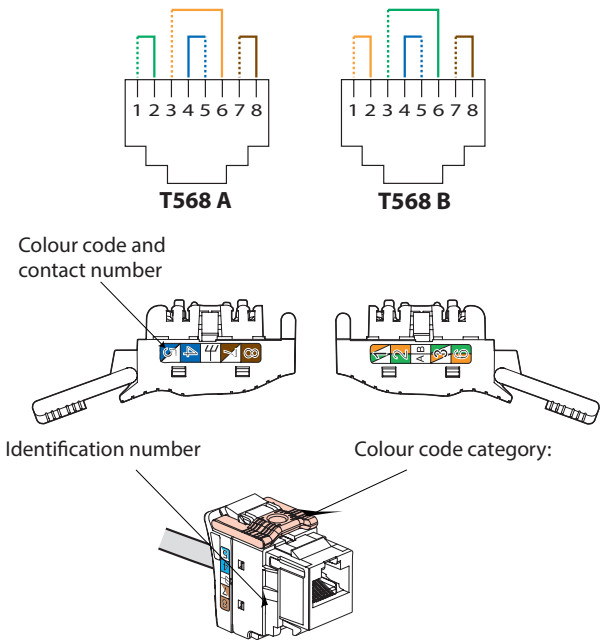


#### Panel dimensions



7. TYPICAL RJ45 CONNECTION

Takes the following plugs:  
RJ11 (4 contacts), RJ12 (6 contacts), RJ45 (9 contacts).  
T568 A and B dual colour code:  
- UTP (8 contacts)  
- STP (9 contacts)



Identification number

Category	Lock colour	UTP	STP
Cat 5e	White	LK01	LK03
Cat 6	Light Grey	LK51	LK53
Cat 6 <sub>A</sub>	Charcoal grey	LK61	LK63

Permissible conductors:  
- Solid/Stranded: 0.4 to 0.573 mm, AWG 26 to 23  
- Polyethylene conductor insulation: Ø 0.85 to 1.7 mm on insulation  
Number of wires to be connected per connection: 1  
RJ45 connectors are equipped with a locking tab. They do not require a special tool and can be re-terminated if a mistake is made.

8. STANDARDS

ISO/IEC 11801 series: International standard for generic cabling systems  
ANSI/TIA 568 series: North American standard for generic cabling systems  
EN 50173 series: European standard for generic cabling systems  
IEC 60603-7 series: International specification standard for plugs and bases

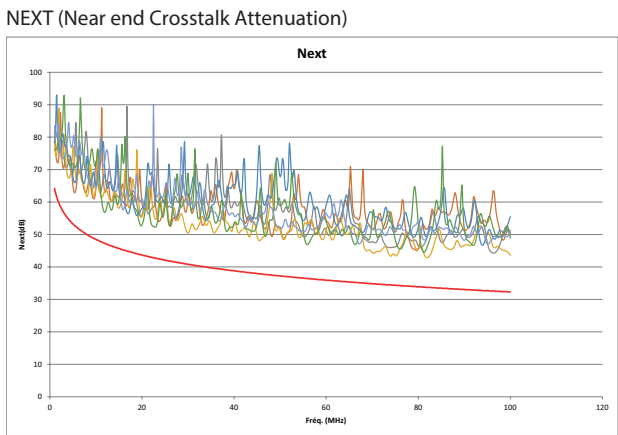
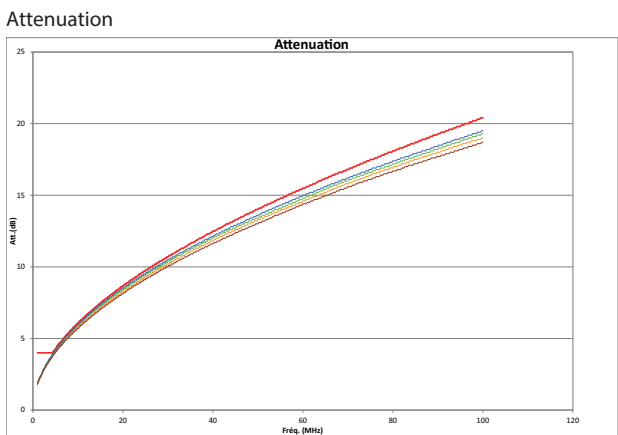
Connectors have earned the UL Listed Mark and are compliant to UL 1863.

Connectors comply with the requirements of remote powering applications  
IEEE 802.3af, IEEE 802.3at, IEEE 802.3bt: "Power over Ethernet" Types 1 to 4, up to 90 W.

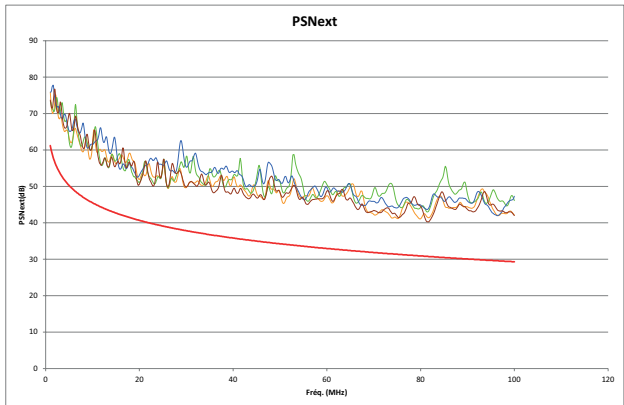
9. PERFORMANCES

■ 9.1 Permanent link performances with Cat 5e UTP connector and Cat 5e U/UTP cable

The red line represents the limit line of standard.



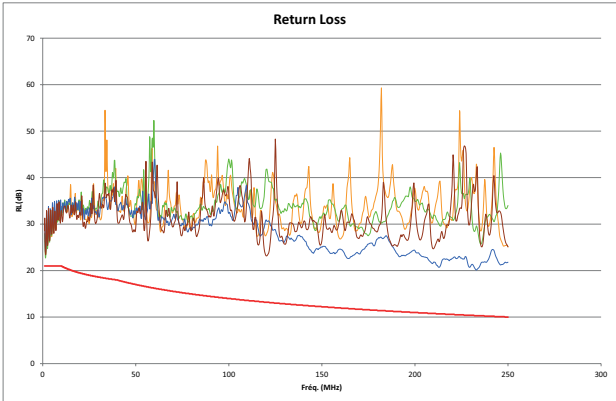
PS NEXT (Power Sum NEXT)



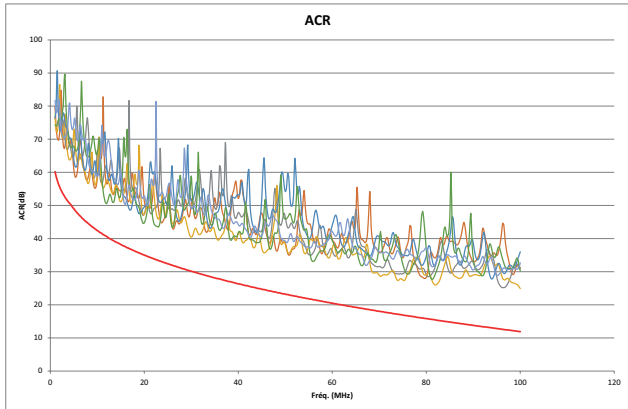
■ 9.2 Permanent link performances with Cat 6 UTP connector and Cat 6 U/UTP cable

The red line represents the limit line of standard.

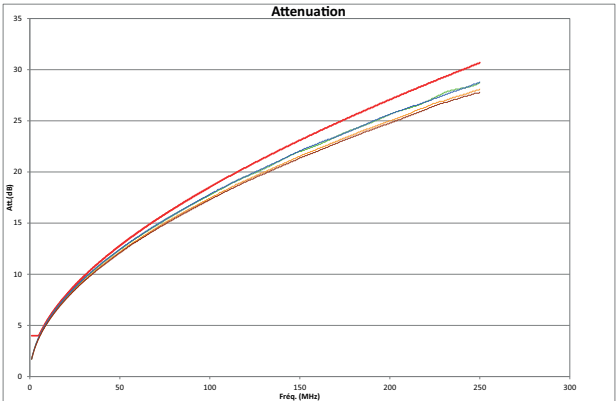
Return loss



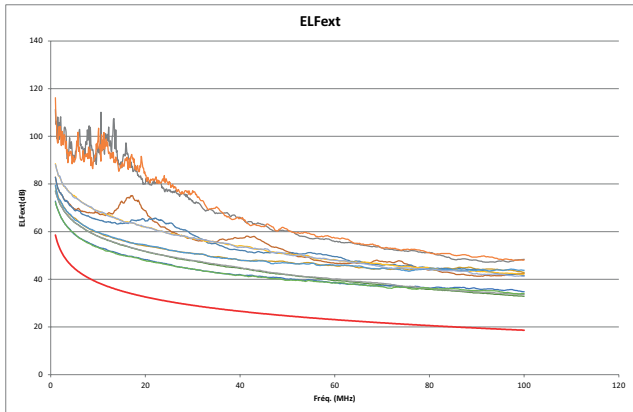
ACR -N



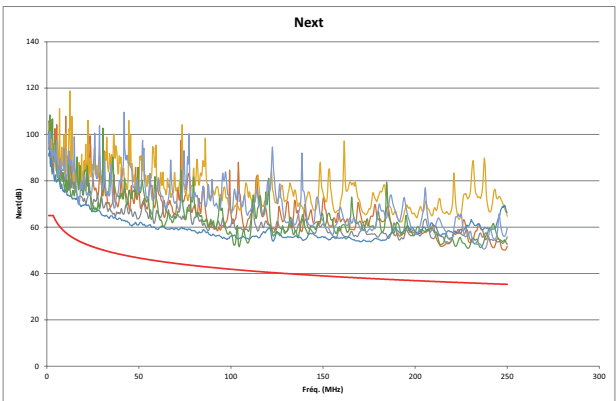
Attenuation



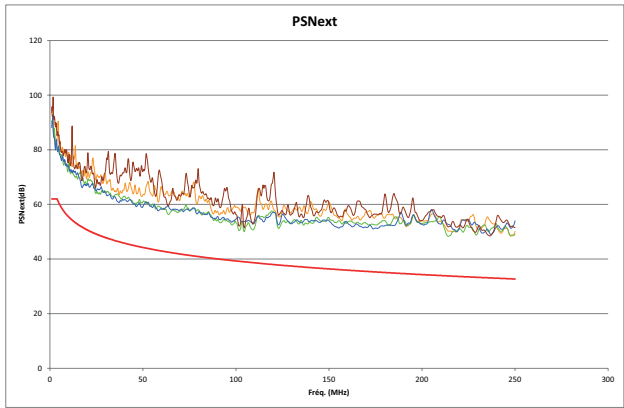
ACR-F



NEXT (Near end Crosstalk Attenuation)



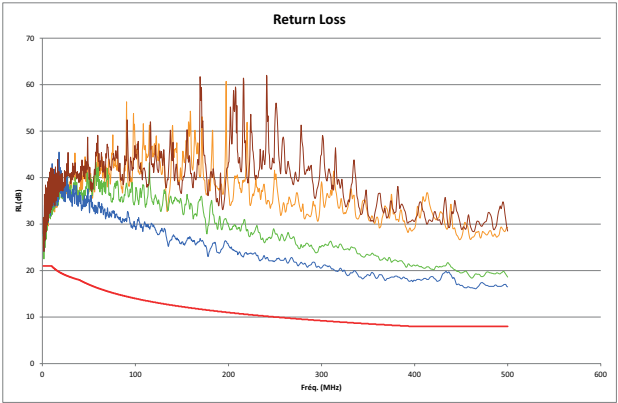
PS NEXT (Power Sum NEXT)



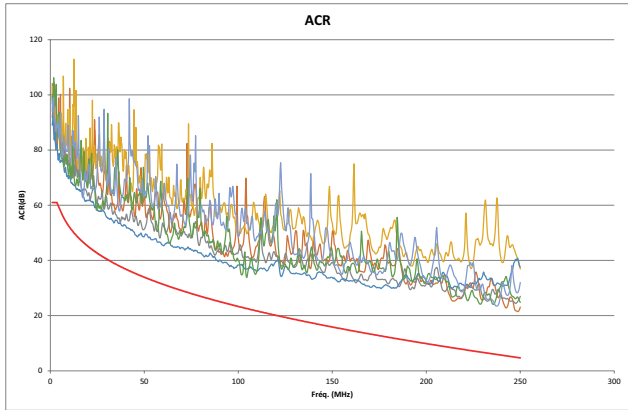
■ 9.3 Permanent link performances with Cat 6<sub>A</sub> STP connector and Cat 6<sub>A</sub> U/FTP cable

The red line represents the limit line of standard.

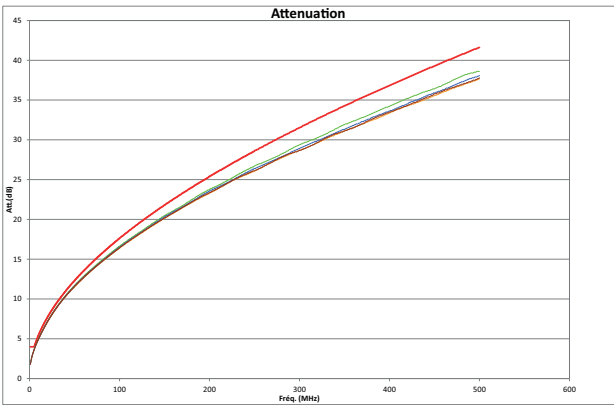
Return loss



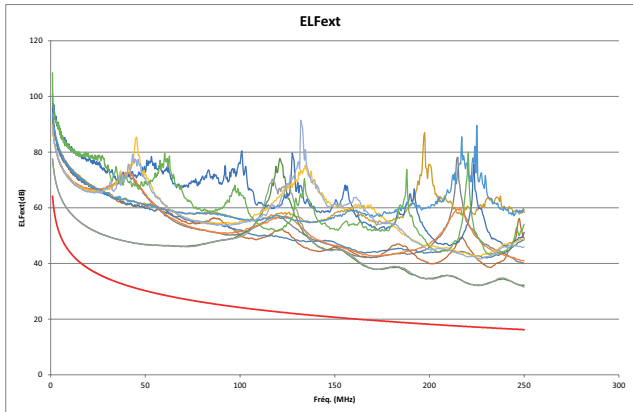
ACR -N



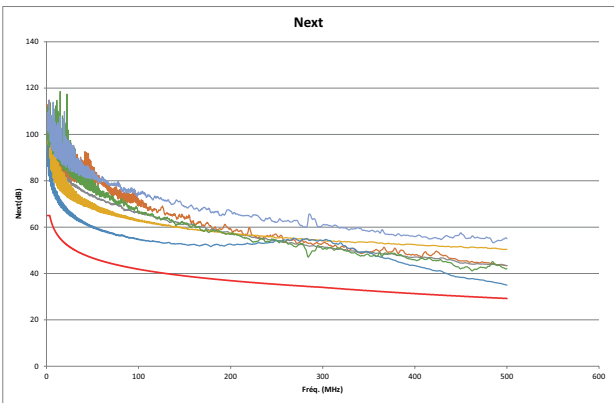
Attenuation



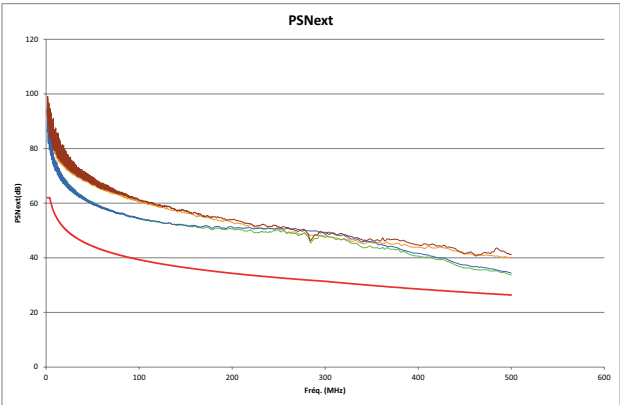
ACR-F



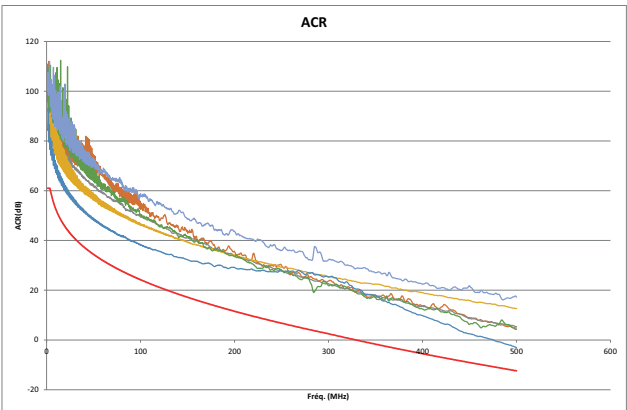
NEXT (Near end Crosstalk Attenuation)



PS NEXT (Power Sum NEXT)



ACR-N



ACR-F

