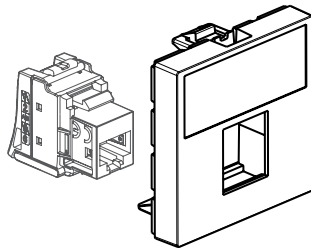
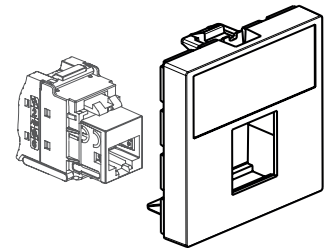


6 329 39/40 (UTP)



6 329 38 (FTP)



6 329 37 (STP)

### 1. USE

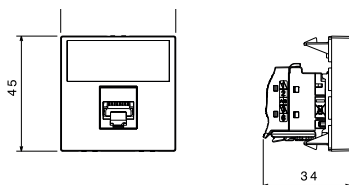
Socket outlet adaptor 45x45 for RJ45 connectors Linkeo C +.  
 Supplied in box of 10 socket outlet adaptors and 10 RJ 45 connectors.  
 Socket outlet adaptor:  
 - 2 modules, 1 port taking 1 Keystone format Linkeo C connector.  
 - Its marking area makes it easy to identify the computer network.  
 - Available for connectors in categories 6<sub>A</sub> STP, 6 FTP, 6 UTP and 5e UTP.  
 - Installation : for snap-on trunking and column offers, desktop and under-desk multi-outlet ranges, floor, flush and surface mounting boxes.  
 - Each RJ45 connector is suitable for flush and surface mounting boxes min 40 mm deep.  
 100% compatible with the Keystone format as defined in the IEC 60603-7 standard. This ensures interchangeability with all other products on the market that comply with the standard.

### 2. RANGE

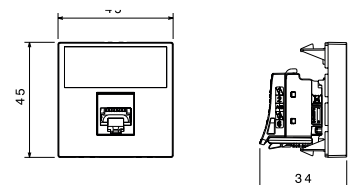
Description	Cat.No	Weight (g)
Adaptator 2M 1 port for Cat 6 <sub>A</sub> STP RJ45 connectors	6 329 37	331
Adaptator 2M 1 port for Cat 6 FTP RJ45 connectors	6 329 38	157.2
Adaptator 2M 1 port for Cat 6 UTP RJ45 connectors	6 329 39	156
Adaptator 2M 1 port for Cat 5e UTP RJ45 connectors	6 329 40	159

### 3. DIMENSIONS (MM)

#### 6 329 37



#### 6 329 38/39/40



### 4. SOCKET OUTLET ADAPTOR TECHNICAL CHARACTERISTICS

- **4.1 Material characteristics**  
 Cover plate: White RAL 9003 ABS  
 Halogen-free / UV-resistant  
 Self-extinguishing: 650°C/30 s
- **4.2 Mechanical characteristics**  
 • Axial retention of the connector in the front plate: minimum 70N  
 • Transverse retention of the connector in the front plate (4 directions): minimum 50N  
 • Impact resistance of the connector in the front plate: IK03(1) in accordance with IEC 62262  
 • Retention of the cover in the Legrand 45x45 mounting frame: minimum 100N  
 • Retention of the cover in the Legrand 45mm cable duct: minimum 50N (1) Impact applied to the front plate  
 Ingress of solids/liquids: IP 20
- **4.3 Climate characteristics**  
 Usage temperature: -10°C to +60°C  
 Storage temperature: -10°C to +70°C  
 Humidity: 5% to 85% (non-condensing)

### 5. CONNECTOR TECHNICAL CHARACTERISTICS

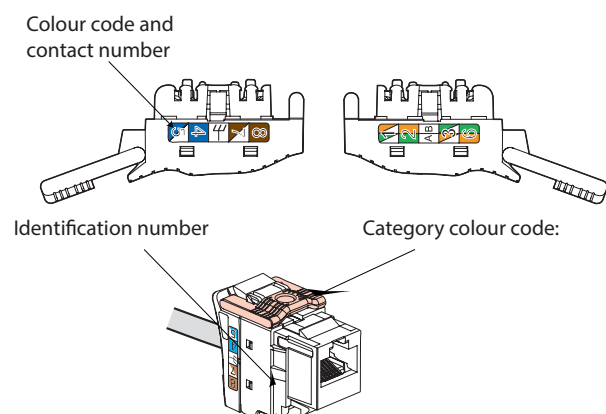
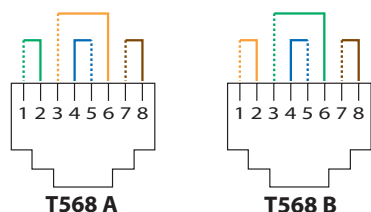
- **5.1 Material characteristics**  
 - Contacts: Bronze, nickel/gold coating, minimum gold thickness 0.8 µm  
 - Nickel/bronze  
 - Polycarbonate  
 - Shielding (STP version): ZAMAK metal alloy, copper/nickel coating
- **5.2 Electrical characteristics**  
 Breakdown voltage: 1000 V  
 Contact resistance: 20 mΩ  
 Insulation resistance: 500 MΩ at 100 VDC  
 Compatible with "PoE" remote power supply
- **5.3 Mechanical characteristics**  
 Maximum number of connection/disconnection operations :  
 - AWG 23 to AWG 26 : compliant with ISO/ IEC 11801 IEC 60352-4 (20 terminations)  
 - AWG 22 : compliant with 5 re-terminations\*  
 \* with cables 0 328 52 and 0 328 77.  
 With any other AWG 22 cable not qualified by Legrand, the IDC is compliant with 2 re-terminations.  
 Endurance: 2,500 cycles (insertion/removal of the plug) in accordance with PL2 of ISO/IEC 11801.  
 IK03  
 IP20
- **5.4 Climate characteristics**  
 Usage temperature: -10°C to +60°C  
 Storage temperature: -10°C to +70°C  
 Humidity: 5% to 85% (non-condensing)

### 6. TYPICAL RJ45 CONNECTION

Takes the following plugs:  
RJ11 (4 contacts), RJ12 (6 contacts), RJ45 (9 contacts).

T568 A and B dual colour code:

- UTP (8 contacts)
- FTP (9 contacts)
- STP (9 contacts)



Identification numbers

Category	Lock-in device colour	UTP	FTP	STP
Cat 5e	White	LK01		
Cat 6	Light grey	LK51	LK52	
Cat 6 <sub>A</sub>	Charcoal grey			LK73

Permissible conductors:

- Solid/Stranded: 0.4 to 0.642 mm, AWG 26 to 22
- Polyethylene conductor insulation: Ø 0.85 to 1.7 mm on insulation

Number of wires to be connected per connection: 1

RJ45 connectors are equipped with a locking tab device. This does not require a special tool, so they can be re-terminated if a mistake is made.

### 7. CARE OF THE SOCKET OUTLET ADAPTOR

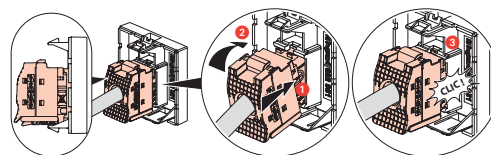
Clean the surface with a cloth.

Do not use acetone, tar-removing cleaning agents or trichloroethylene.

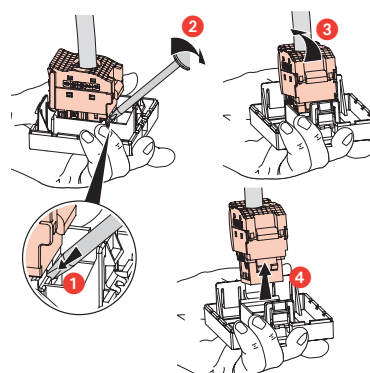
Resistant to the following products: Hexane (EN 60669-1), methylated spirit, soapy water, diluted ammonia, bleach diluted to 10%, window-cleaning products, pre-impregnated wipes.

**Caution:** Always test before using other special cleaning products.

### 8. MOUNTING THE CONNECTOR



### 9. REMOVING THE CONNECTOR



### 10. STANDARDS

ISO/IEC 11801 series: International standard for generic cabling systems

ANSI/TIA 568 series: North American standard for generic cabling systems

EN 50173 series: European standard for generic cabling systems

IEC 60603-7 series: International specification standard for plugs and bases

Connectors comply with the requirements of remote power supply applications IEEE 802.3af, IEEE 802.3at, IEEE 802.3bt: "Power over Ethernet" Types 1 to 4, up to 90 W.

**11. PERFORMANCES**

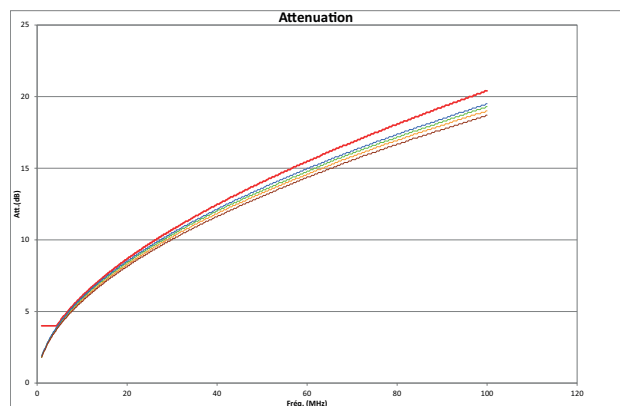
**■ 1.1 Permanent link performances with Cat 5e UTP connector and Cat 5e U/UTP cable**

The red line represents the limit line of standard.

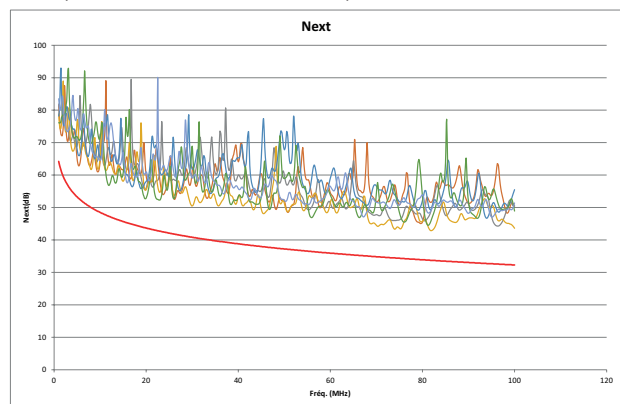
Return loss



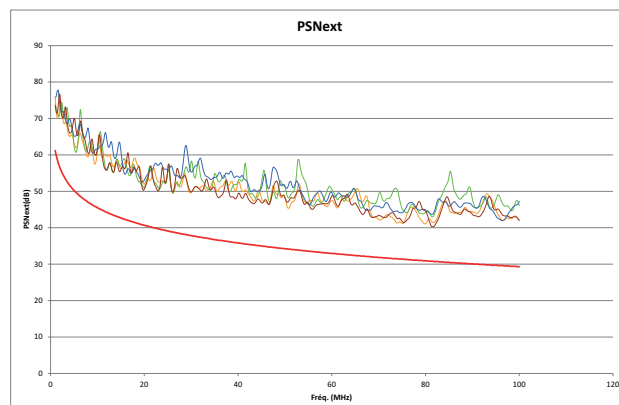
Attenuation



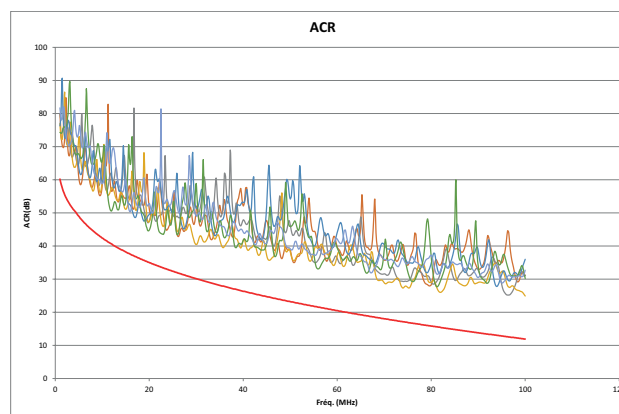
NEXT (Near end Crosstalk Attenuation)



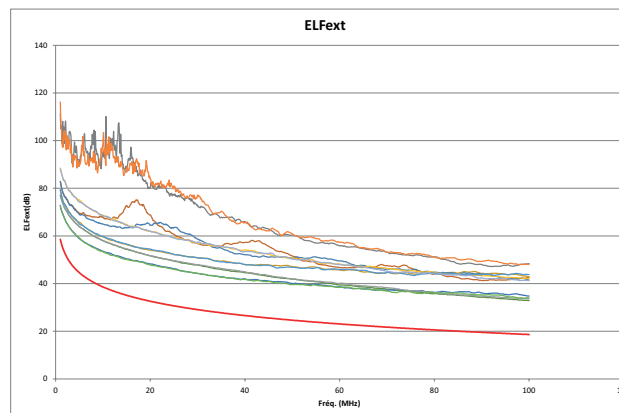
PS NEXT (Power Sum NEXT)



ACR -N



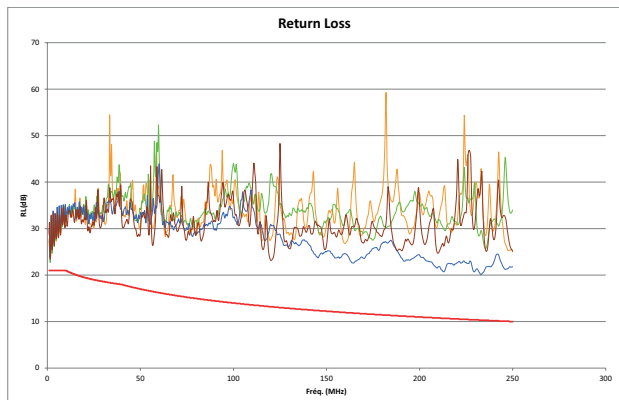
ACR-F



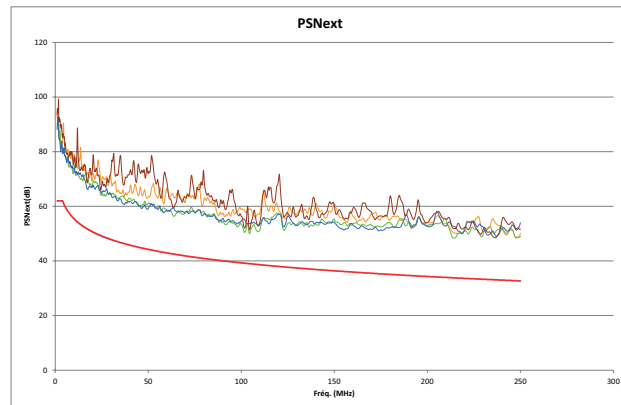
**1.2 Permanent link performances with Cat 6 UTP connector and Cat 6 U/UTP cable**

The red line represents the limit line of standard.

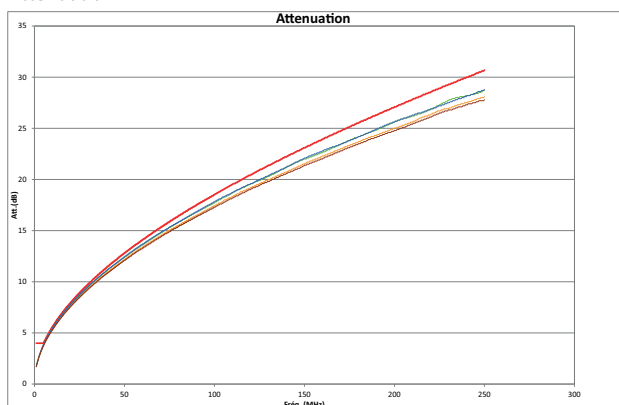
**Return loss**



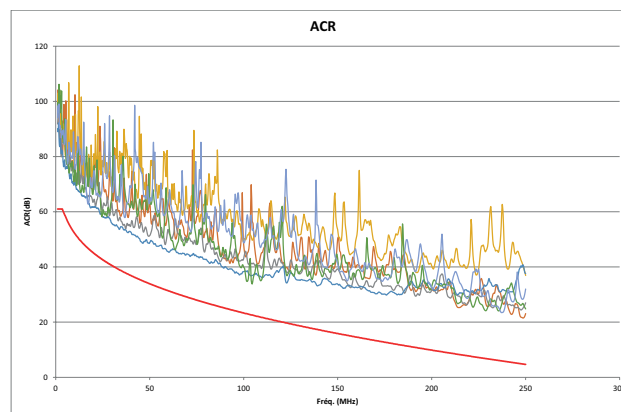
**PS NEXT (Power Sum NEXT)**



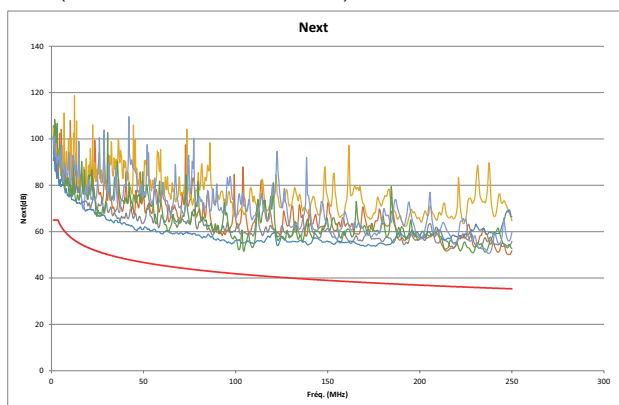
**Attenuation**



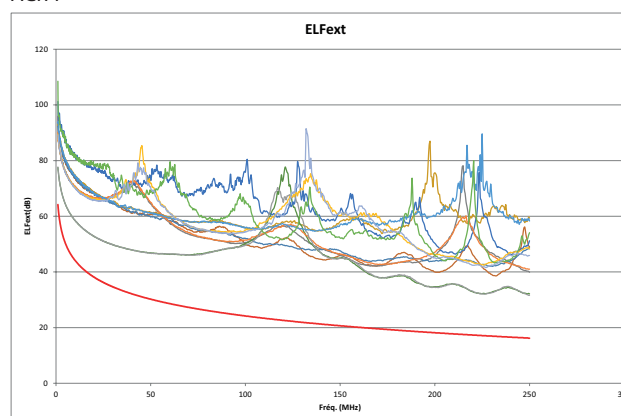
**ACR-N**



**NEXT (Near end Crosstalk Attenuation)**



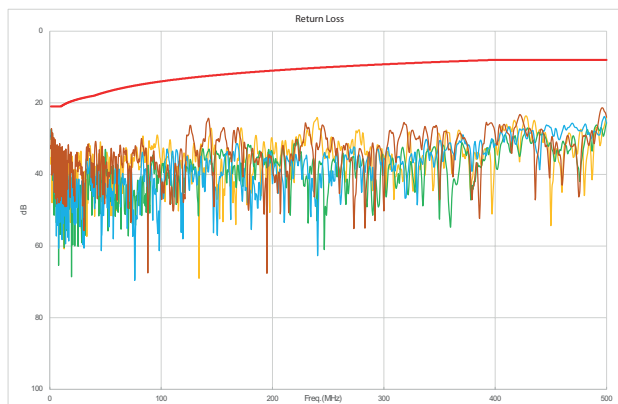
**ACR-F**



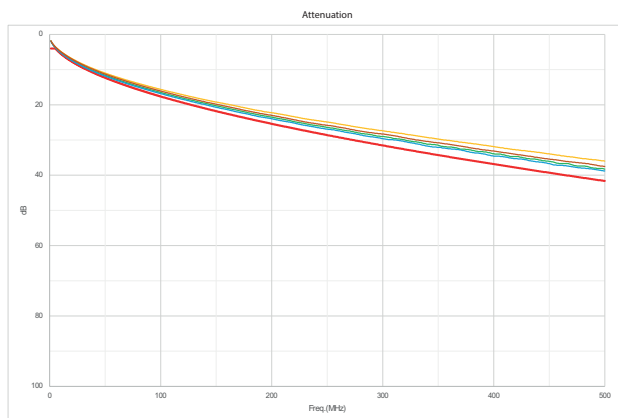
■ 1.3 Permanent link performances with Cat 6<sub>A</sub> STP connector and Cat 6<sub>A</sub> F/UTP cable (IEC 11801)

The red line represents the limit line of standard.

Return loss



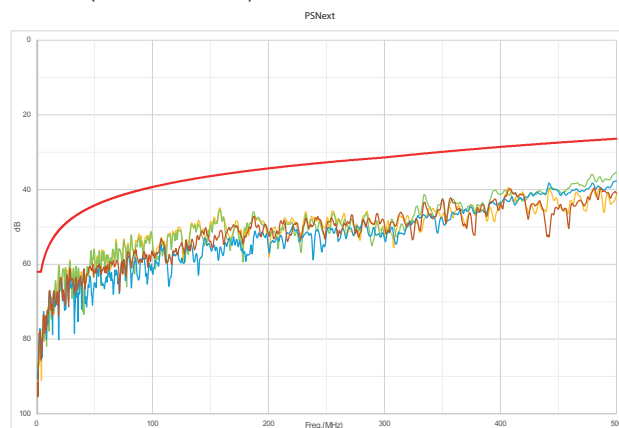
Attenuation



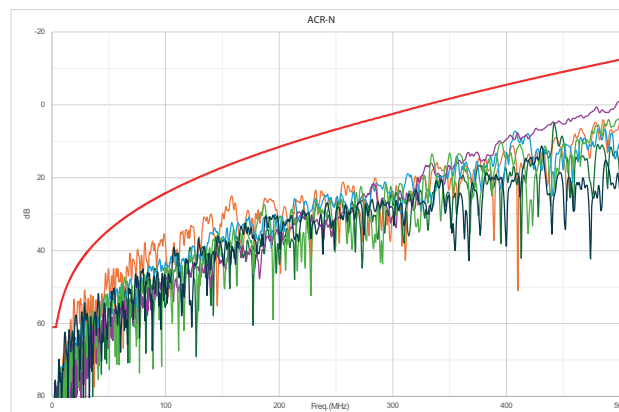
NEXT (Near end Crosstalk Attenuation)



PS NEXT (Power Sum NEXT)



ACR -N



ACR-F

