

CONTENTS	Page
1. General characteristics	1
2. Positioning	1
3. Technical characteristics	2
4. Installation	2
5. Dimensions	2
6. Accessories	3
7. Standards	3

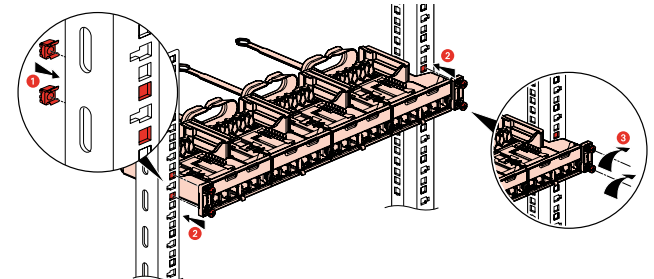
1. GENERAL CHARACTERISTICS

Panel-and-cassette system to be equipped with HD Jack connectors (Cat 5e UTP, Cat 6 UTP/STP, Cat 6A UTP/STP).
 Universal mounting in all racks or cabinets with automatic earthing on unpainted uprights. Painted uprights can be connected to earth with a cord and a screw connection.
 Equipped with rear cable guide to hold cables during maintenance.
 Supplied with identification labels for each cassette.
 The connectors are compliant to all performance, mechanical, climatic and electromagnetic requirements of the ISO/IEC 11801-1
 The connectors are compliant NF C90 483. They supports radio frequency signals up to 2150MHz on the pair "7/8".
 Compliant to standards ANSI/TIA 568
 Cassettes removed automatically by simply pressing the button on the front.
 Each connector can be removed individually.

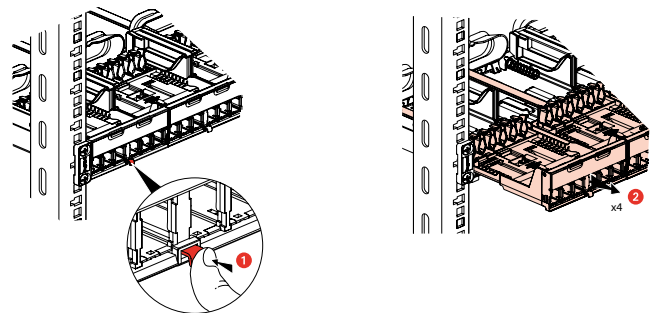
2. POSITIONING

Connectors are connected at the front without a special tool.
 - Connectors clip onto the panel individually
 Cable ties not required. Cables are maintained in position by dedicated support in the cassette and on the panel.

Mounting a panel

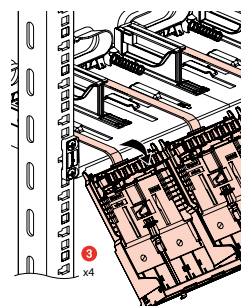


Removing a cassette



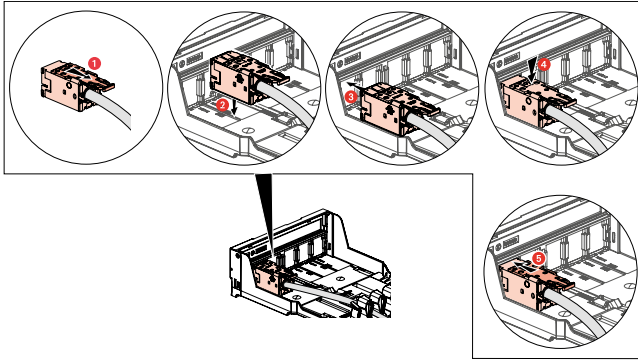
Description	Cat.No	No. of ports	Weight (g)
Panel without cassette	0 336 82	-	1169
Panel without cassette*	0 337 91	-	1179
Panel with cassettes to be equipped	0 336 83	24	1601
Panel with HD cassettes to be equipped	0 336 84	48	1549
6-port cassette to be equipped	0 336 80	6	108
12-port cassette to be equipped	0 336 81	12	95

* Soluclip fixing

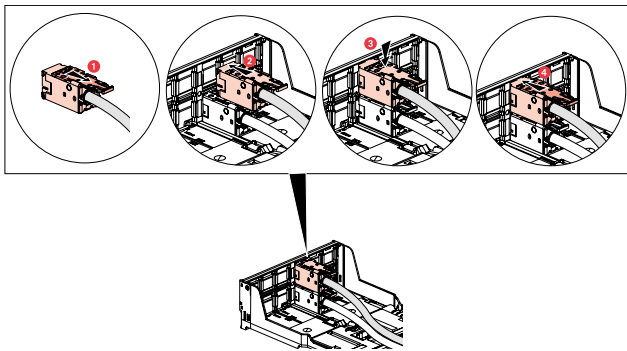


2. POSITIONING (continued)

Mounting on 24-port connector



Mounting on 48-port connector



3. TECHNICAL CHARACTERISTICS

3.1 Material characteristics

- Panel:
- DC01 galvanised sheet steel
 - Spring steel
 - Steel (screw)
 - ABS
 - Polyamide

- Cassette
- Polycarbonate
 - Polyamide
 - Zamak + zinc
 - Stainless steel
 - Nickel silver

3.2 Mechanical characteristics

IK03
Maximum 20 cable re-termination according to following options:

Test method	Cable AWG
IEC 60352-3	22 to 24 ⁽¹⁾
IEC 60352-3	24 to 26 ⁽¹⁾
Single AWG	22 or 23 or 24 or 25 or 26 ⁽²⁾

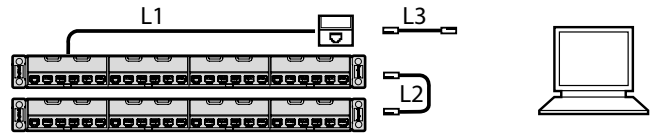
⁽¹⁾ Re-termination of any mix of conductor sizes within that range.
⁽²⁾ Re-termination on only 1 conductor size. No mix allowed.

Endurance: 2500 movements (plug insertion/withdrawal) according to ISO/IEC 11801-1 PL2.

3.3 Climate characteristics

Operating temperatures: -10°C to +60°C
Humidity: 5% to 85% (non-condensing)

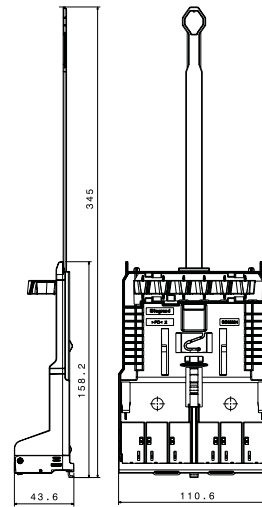
4. INSTALLATION



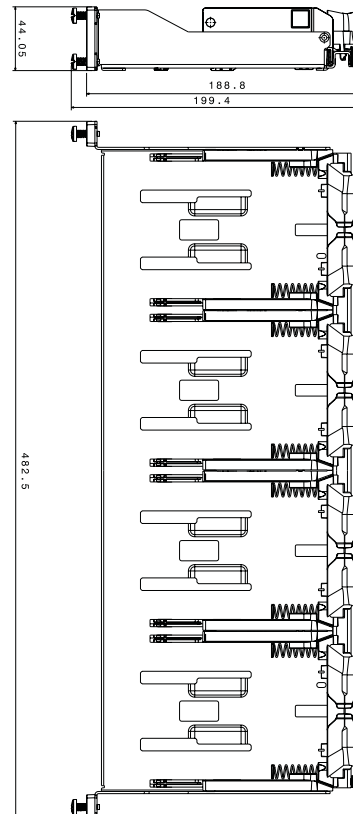
Cat 5e L1 ≤ 90 m
Cat 6 L2 + L3 ≤ 10 m
Cat 6A

5. DIMENSIONS

Dimensions of cassettes 0 336 80/81

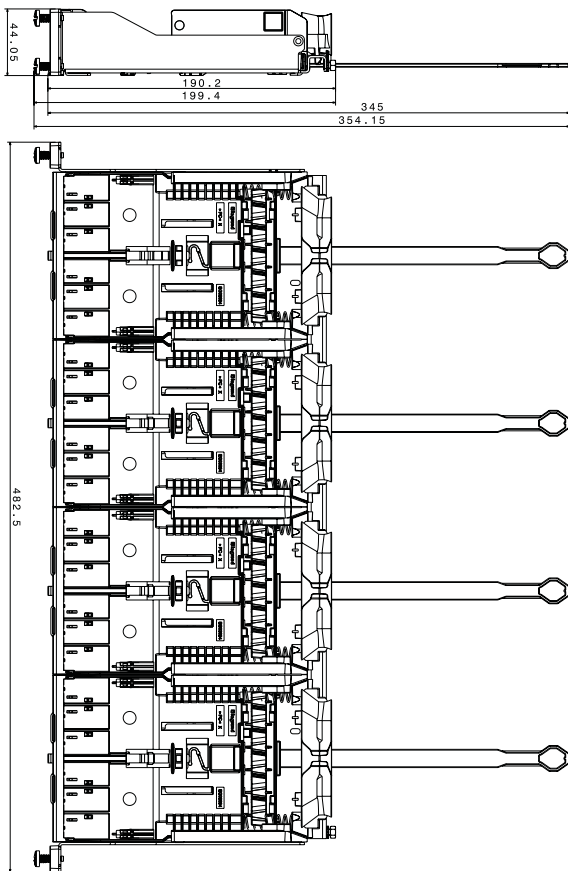


Dimensions of panel 0 336 82



5. DIMENSIONS (continued)

Dimensions of panels 0 336 83/84



6. ACCESSORIES

- **0 336 85:** Blanking cassette
Used to fill gaps in the panel
- **HDJBL 10-00:** Port blanking plate
Used to block up each port in a cassette individually
- **HDJ5E-78:** UTP Cat5E connector
- **HDJ6-00; HDJ6-36; HDJ6-44; HDJ6-88:** UTP Cat6 connector
- **HDJ6A-00; HDJ6A-36; HDJ6A-44:** UTP Cat6A connector
- **HDJS625:** STP Cat6 connector
- **HDJS6A25:** STP Cat6A connector

7. STANDARDS

ISO/IEC 11801 series : International standard for generic cabling for customer premises
 ANSI/TIA 568 series : North American standard for generic cabling for customer premises
 EN 50173 series : European standard for generic cabling for customer premises
 IEC 60603-7 series : International standard for connector specifications

Connectors are compliant to the following
 UL 1863 (HDJS part numbers also UL 2043)
 IEEE 802.3af / 802.3at / 802.3bt Type 1 to Type 4
 FCC part 68, Subpart F
 Intertek ETL component verified