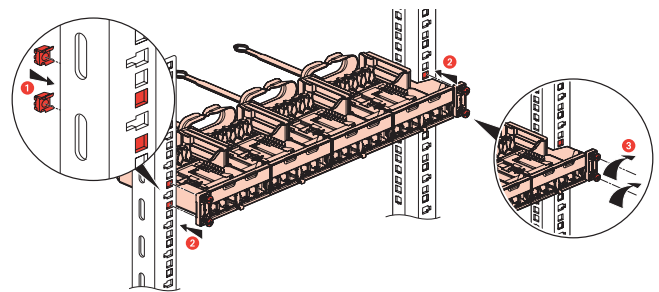


CONTENTS	Page
1. GENERAL CHARACTERISTICS	1
2. POSITIONING	1
3. TECHNICAL CHARACTERISTICS	2
4. INSTALLATION	2
5. DIMENSIONS	2
6. ACCESSORIES	3
7. STANDARDS	3

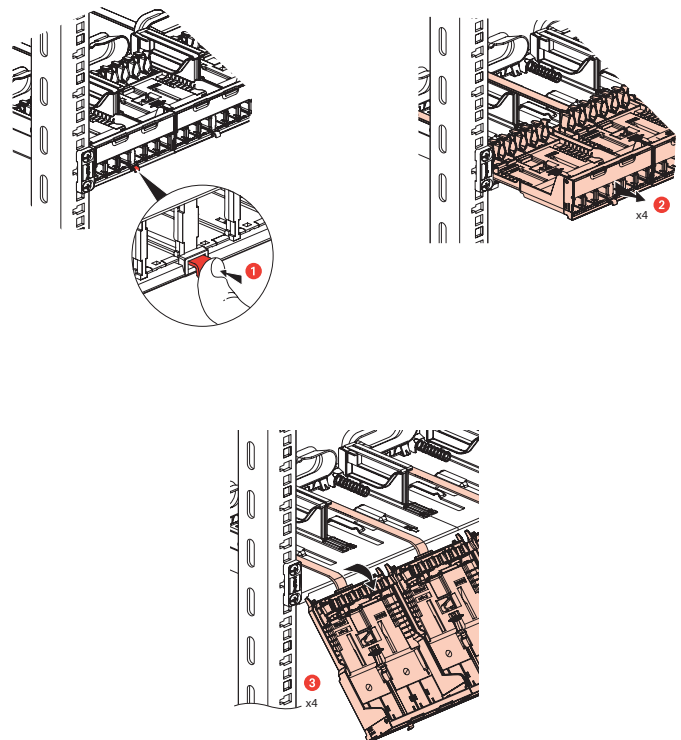
1. GENERAL CHARACTERISTICS

Panel-and-cassette system to be equipped with HD Jack connectors (Cat 5e UTP, Cat 6 UTP/STP, Cat 6A UTP/STP).
 Universal mounting in all racks or cabinets with automatic earthing on unpainted uprights. Painted uprights can be connected to earth with a cord and a screw connection.
 Equipped with rear cable guide to hold cables during maintenance.
 Supplied with identification labels for each cassette.
 Conforming to standards ISO/IEC 11801 edition 3.0 (2017) and 19" panel - 1 U.
 Conforming to standards ANSI/TIA 568
 Cassettes removed automatically by simply pressing the button on the front.
 Each connector can be removed individually.

Mounting a panel



Removing a cassette



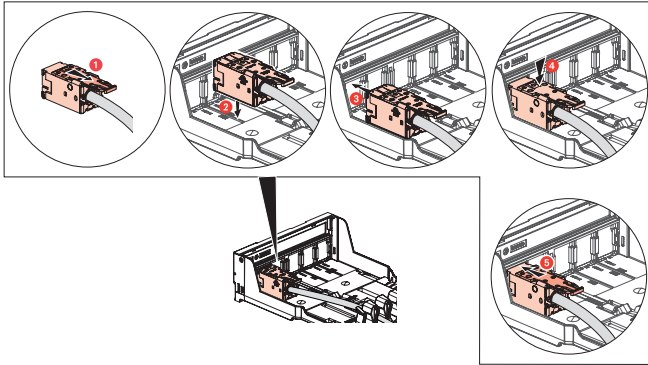
Description	Cat.No	No. of ports	Weight (g)
Panel without cassette	0 336 82	-	1169
Panel without cassette*	0 337 91	-	1179
Panel with cassettes to be equipped	0 336 83	24	1601
Panel with HD cassettes to be equipped	0 336 84	48	1549
6-port cassette to be equipped	0 336 80	6	108
12-port cassette to be equipped	0 336 81	12	95

* Soluclip fixing

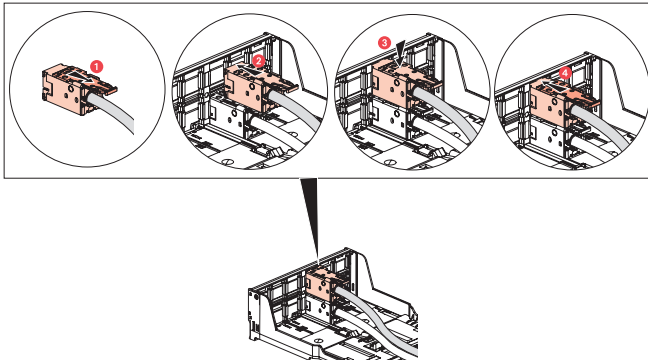
2. POSITIONING

Connectors are connected at the front without a special tool.
 - Connectors clip onto the panel individually
 No need for cable ties: the cable is held in its cable guide in the cassette and by a concentric strand guide on the panel.

Mounting on 24-port connector



Mounting on 48-port connector



3. TECHNICAL CHARACTERISTICS

■ 3.1 Material characteristics

Panel:

- DC01 galvanised sheet steel
- Spring steel
- Steel (screw)
- ABS
- Polyamide

Cassette

- Polycarbonate
- Polyamide
- Zamak + zinc
- Stainless steel
- Nickel silver

■ 3.2 Mechanical characteristics

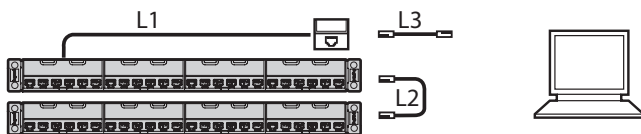
IK03

■ 3.3 Climate characteristics

Operating temperatures: -10°C to +60°C

Humidity: 5% to 85% (non-condensing)

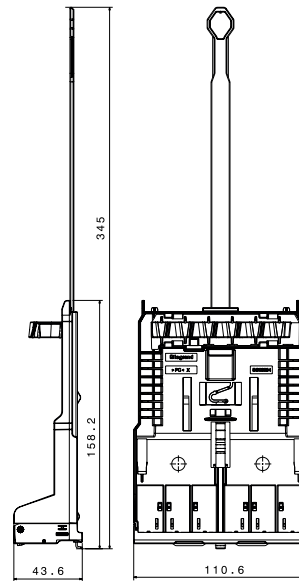
4. INSTALLATION



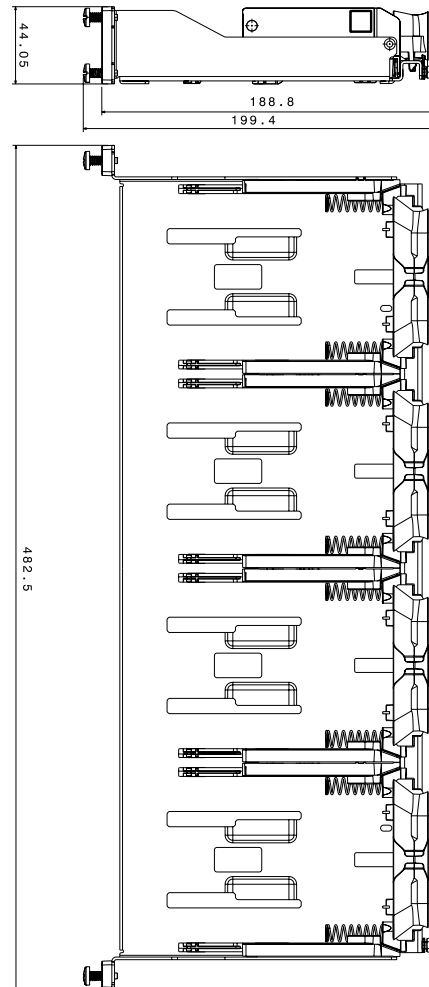
Cat 5e L1 ≤ 90 m
 Cat 6 L2 + L3 ≤ 10 m
 Cat 6A

5. DIMENSIONS

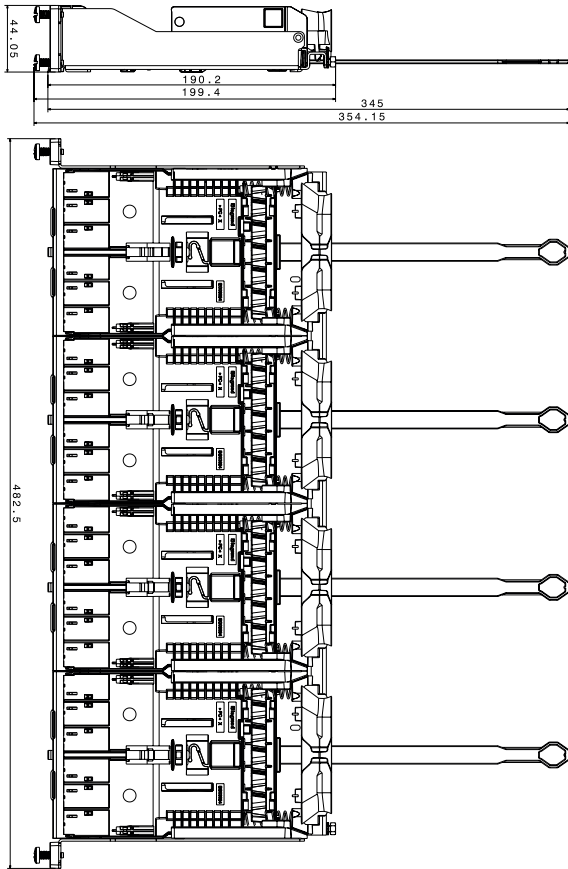
Dimensions of cassettes 0 336 80/81



Dimensions of panel 0 336 82



Dimensions of panels 0 336 83/84



6. ACCESSORIES

- 0 336 85: Blanking cassette

Used to fill gaps in the panel

- HDJBL 10-00: Port blanking plate

Used to block up each port in a cassette individually

- HDJ5E-78: UTP Cat5E connector

- HDJ6-00; HDJ6-36; HDJ6-44; HDJ6-88: UTP Cat6 connector

- HDJ6A-00; HDJ6A-36; HDJ6A-44: UTP Cat6A connector

- HDJS625: STP Cat6 connector

- HDJS6A25: STP Cat6A connector

7. STANDARDS

ISO/IEC 11801 series : International standard for generic cabling for customer premises

ANSI/TIA 568 series : North American standard for generic cabling for customer premises

EN 50173 series : European standard for generic cabling for customer premises

IEC 60603-7 series : International standard for connector specifications

Connectors are compliant to the following

UL 1863 (HDJS part numbers also UL 2043)

IEEE 802.3af / 802.3at / 802.3bt Type 1 to Type 4

FCC part 68, Subpart F

Intertek ETL component verified