

DISPLAY PORT Male/Male cord

Cat. No(s): 0 398 58, 0 514 00



1. USE

Cord for audio/video transmission

Straight DISPLAY PORT - DISPLAY PORT (cable with multicore cords)

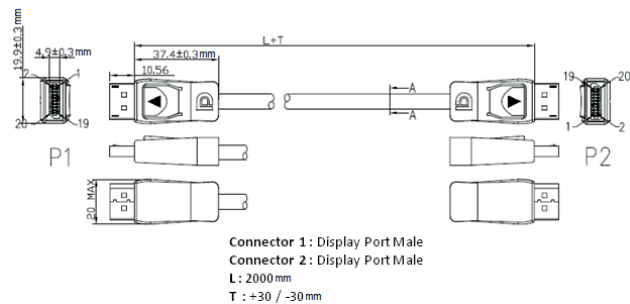
2. DESCRIPTION

Connector 1 : Display port

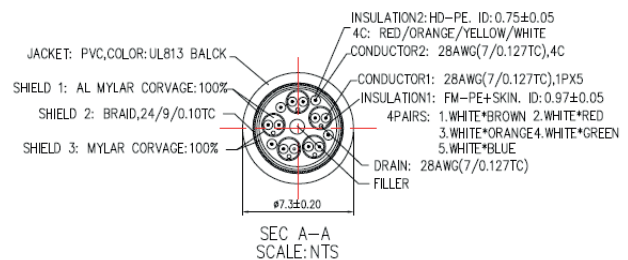
Connector 2 : Display port

3. DIMENSIONS

Cat. Nos	Length (m)
0 398 58, 0 514 00	2



- ATTENUATION (MAX) : 5.02dB@100~450MHz, 7.695dB@1GHz, 12.595dB@2GHz, 17.495dB@3GHz, 22.395dB@4GHz, 27.295dB@5GHz, 32.195dB@6GHz, 37.095dB@7GHz
- RETURN LOSS (MIN) : 15.00@100~675MHz, 12.90@7GHz, 9.20@2GHz, 7.04@3GHz, 5.5@4GHz, 4.31@5GHz, 3.33@6GHz, 2.51@7GHz
- NEXT (MAX) : -36dB@0.1~1.35GHz, -23.44dB@2GHz, -20.80dB@3GHz, -18.93dB@4GHz, -17.48dB@5GHz, -16.29dB@6GHz, -15.28dB@7GHz
- FEXT : -26dB/CABLE@100~7000MHz(MAX)



Connector :

P1&P2 : Display port 20P male, solder type, gold flash contacts, nickel plated shelle, black ABS hood assembly

4. PHYSICAL CHARACTERISTICS

Operating temperature	0°C - +50°C
Storage temperature	-25°C - +70°C
Approvals	RoHS compliant

Cable :

- UL20276, (28AWG*2C+D+AL/MY)*5+28AWG*4C+Foamed PP Tope+AL+BRAID, OD: 7.3±0.15mm BLACK JACKET PVC.
- RATING : TEMP 80°C, VOLTAGE 30V
- CONDUCTOR RESISTANCE : AT 20°C MAX 28AWG : 237.25 ohms/KM
- INSULATION RESISTANCE : 10M -KM MIN AT 20°C DC 500V (EIA-364-21)
- DIELECTRIC STRENGTH : AC 500V/1 MINUTE TO BREAKDOWN (EIA-364-20)
- IMPEDANCE : PAIRS (DIFFERENTIAL MODE) 100±5 ohms