





Contents

1. Licence Agreements	5
2. System requirements	7
3. Catalogue numbers	7
4. Compatible Devices	8
4.1 Measuring / metering devices	8
5. Languages available	11
6. Preliminary operations	12
7. Implementation	12
7.1 Local settings	12
7.2 Connecting the device to a PC - Programming	12
7.3 Web Server default settings	12
7.4 LAN configuration of the computer	13
7.5 Configuration of the Web Server	15
7.5.1 Network settings - Personal configuration	15
7.5.2 Access with new Network parameters	18
7.6 Date and Time settings	21
7.7 Update of the Web Server	23
7.7.1 Update procedure	24
7.8 Changing of the Web Server's language	25
7.8.1 Changing of the default language	25
7.8.2 Changing of the display language	26
7.9 Remote settings	27
7.10 Connection schemes - Normal Use	27
7.11 LAN configuration of the computer - Automatic IP address	28
7.12 Configuration of the electric installation in the Web Server - "System configuration"	30
7.12.1 Gateways and Devices configuration	32
7.12.1.1 Creating and Saving new Gateways	33
7.12.1.2 Creating and Saving of "Physical" Devices	34
7.12.1.3 Advanced options	39
7.12.1.4 System functions	42
7.12.2 Loads, Groups and Panel boards configuration	44
7.12.2.1 Panel boards	45
7.12.2.2 Loads	46
7.12.2.3 Measure groups	47
7.12.2.4 System functions	48
7.12.3 Bill of Consumptions	50
7.12.3.1 Creating and Saving Tariffs and new Cost Rules	51
7.12.4 Configuration of the data sample rate	57
7.12.5 Master/Slave function	59
7.12.5.1 Activation of the function	60
7.12.5.2 Creating and Saving of "Virtual" Gateways and Devices	61

Contents

8. Use	65
8.1 Access	65
8.1.1 Access rights	65
8.1.2 Creating a new User	66
8.1.3 Changing of the access rights	67
8.1.4 Logout procedure	68
8.2 Data display pages	69
8.2.1 My panel board	69
8.2.2 Consumptions: data & diagram.	72
8.2.2.1 Grand Total	74
8.2.2.2 Partials - Groups and load type	76
8.2.2.3 Compare	77
8.2.2.4 Details	78
8.2.2.5 Tariffs	80
8.2.2.5.1 Total	81
8.2.2.5.2 Details	82
8.2.2.6 Advanced histograms and charts display	83
8.2.3 Link Functionality	86
8.3 Historical of consumptions	88
8.3.1 CSV files options	88
8.3.2 Access to CSV files	89
8.3.3 Management of CSV files	91
8.3.3.1 "devices" folder	92
8.3.3.2 "energy" folder	93
8.3.3.3 "eqcheck" folder	93
8.3.3.4 "gas" folder	93
8.3.3.5 "overall total" folder	93
8.3.3.6 "settings" folder	94
8.3.3.7 "water" folder	94
8.4 Reports & data download	95
8.4.1 Data download	95
8.4.2 Reports	99
8.5 Pushing e-mail and notifications	103
8.5.1 E-mail settings	103
8.5.2 Telegram	105
8.5.3 Automatic reports	107
8.5.4 Alerts settings	110
8.6 Reports: alarms	112
8.7 System information	113
9. Backup and Restore	115
9.1 Backup procedure	115
9.2 Restore procedure	117
10. Network type and access mode	119
10.1 LAN/Intranet	119
10.1.1 Ports	119
10.2 WAN/Internet	120
10.2.1 Ports	121
11. FAQ	122
11.1 Access problems	122
11.2 Telegram problems	122
11.3 E-mails sending test problems	122

1. License Agreements

IMPORTANT:

PLEASE READ THE TERMS AND CONDITIONS OF THIS LICENSE AGREEMENT CAREFULLY BEFORE USING THE SOFTWARE (AS DEFINED BELOW).

THIS IS A LICENSE AGREEMENT BETWEEN YOU AND BTicino SpA (BTicino) WHICH IS LOCATED IN VIALE BORRI 231, 21100 VARESE, ITALY.

BY OPENING THIS PACKAGE, BREAKING THE SEAL, CLICKING THE "I AGREE" OR "YES" BUTTON OR OTHERWISE INDICATING ASSENT ELECTRONICALLY, OR LOADING THE SOFTWARE, YOU AGREE TO THE TERMS AND CONDITIONS OF THIS LICENSE AGREEMENT.

IF YOU DO NOT AGREE TO THESE TERMS AND CONDITIONS, MAKE NO FURTHER USE OF THE SOFTWARE, AND CONTACT YOUR VENDOR OR BTicino CUSTOMER SERVICE FOR INFORMATION ON HOW TO OBTAIN A REFUND OF THE MONEY YOU PAID FOR THE SOFTWARE.

1. DEFINITIONS

"Software" means:

- (a) all of the contents of the files of the software ("Energy Management Software") either with a Web server ("Energy Web Server");
- (b) related explanatory written materials or files ("Documentation"), fonts and the packaging of the product;
- (c) upgrades, modified versions, updates, additions, and copies of the foregoing, provided to you by BTicino at any time (collectively, "Updates").

"Use" means to access, install, download, copy, or otherwise benefit from using the functionality of the Software.

2. GENERAL USE OF THE SOFTWARE

2.1 License

This contract is a license Agreement.

BTicino grants you a right not exclusive and not transferable to use the Software according to the conditions and terms defined below.

2.2 Rights and obligations

You may:

- use one copy of the Software on a single computer. If a greater number of copies and/or number of computers is specified within the Documentation or the applicable transaction documentation from the authorized distributor or reseller from which you obtained the Software, you may use the Software in accordance with such specifications;
- make one copy of the Software for back-up or archival purposes, or copy the Software onto the hard disk of Your computer and retain the original for back-up or archival purposes;
- use the Software on a network, provided that you have a licensed copy of the Software for each computer that can access the Software over that network;
- permanently transfer all of your rights in the Software granted under this License Agreement to another person or entity, provided that you retain no copies of the Software and the transferee agrees to the terms of this License Agreement. Partial transfer of your rights under this License Agreement shall not be permitted. For example, if the applicable documentation grants you the right to use multiple copies of the Software, only a transfer of the rights to use all such copies of the Software would be valid;

1. License Agreements *(continued)*

2.2 Rights and obligations *(continued)*

- use the Software in accordance with any additional permitted uses which may be set forth below.

You may not, nor may you permit any other person to:

- sublicense, rent or lease any portion of the Software;
- reverse engineer, decompile, disassemble, modify, translate, make any attempt to discover the source code of the Software or create derivative works from the Software;
- use the Software as part of a facility management, timesharing, service provider or service bureau arrangement;
- use the Software in any manner that is not permitted pursuant to this License Agreement.

3. COPYRIGHT

The Software is the property of BTicino or his licensors and is protected by law.

4. LIMITED WARRANTY

Warranty period for Products shall be 12 (twelve) months from delivery date. BTicino guarantees the smooth running of this software only with the use of products BTicino. He cannot be held responsible in case of malfunction due to the use of products others than products BTicino.

5. LIMITATIONS OF LIABILITY

BTicino cannot be held liable for any damages of any kind, including without limitation any consequential, operating loss, data loss, malfunction of other softwares installed on your computer or any lost profits resulting of the impossibility to use the software, even if BTicino has been aware of the possibility of such damage.

6. TERMINATION

BTicino has the right to terminate this Agreement by rights immediately by a written notification if you fail to comply with any term of this Agreement and in particular with the provision of article 2.2.

Upon termination of the license, you accept to destroy all copies of the Software and his Documentation.

7. GOVERNING LAW

This Agreement will be governed by Italian Law.

In the event of issues relating to the construction, validity and/or execution of this agreement the Parties undertake to find an amicable settlement.

Failing such a settlement, the disputes shall be submitted to the exclusive jurisdiction of the Court of Milan.

2. System requirements

Display possible on:

- PC: (Device, Web Browser)
 - Firefox : version 50 and following (v50.0+)
 - Chrome : v55.0+
 - Safari : v10.0+
 - Opera : v53.0+
- Tablet: (Device, Operating system, Web Browser)
 - iPad (all versions), iOS 10+, Safari
 - Android v6.0+, Chrome v55.0+
- Smartphones: (see User Guide)

3. Catalogue numbers

SXWS255: "Energy Web Server 255"

- Management up to 255* devices

Note: for each Gateway max. 32 Modbus addresses or 32 pulse counters

* Recommended value 128

Software version 3.9.0

4. Compatible devices

4.1 Measuring / metering devices

- Range **NEMO**
 - Multifunction measuring units RS485 :
 - Nemo D4-L, Cat.No **MF6FT40026**
 - Nemo D4-L +, Cat.Nos **MF6HT40003, MF6HT40006, MF6HT4000H**
 - Nemo D4-e, Cat.No **MFD4E06**
 - Nemo D4-Le, Cat.Nos **MFD4421, MFD4422, KRNEMOD4LE080, KRNEMOD4LE142, KRNEMOD4LE190**
 - Nemo D4-Dc, Cat.Nos **MF6DC4200H, MF6DC42006, MF6DC4206H, MF6DC42066**
 - Nemo D4-EC, Cat.Nos **MKD4R63DT, MKD4R125DT, MFD4ORFCDT1, MFD41ORFCDT, MFD42ORFCDT**
 - Nemo 72-Le, Cat.Nos **MF72421, MF72422**
 - Nemo 96HD-e, Cat.No **MF96E06**
 - Nemo 96HD-Le, Cat.Nos **MF96411 + IF96001, MF96412 + IF96001, MF96411 + IF96012, MF96412 + IF96012, MF96421, MF96422, KRNEMOHDLE080, KRNEMOHDLE142, KRNEMOHDLE190**
 - Nemo 96HD, Cat.Nos **MF96001 + IF96001, MF96002 + IF96001, MF96001 + IF96012, MF96002 + IF96012**
 - Nemo 96HD+, Cat.Nos **MF96021 + IF96001, MF96022 + IF96001, MF96021 + IF96012, MF96022 + IF96012**
 - Nemo 96EA, Cat.Nos **MFQ96021 + IF96001, MFQ96022 + IF96001**
 - Nemo 96-EC, Cat.Nos **MK96R63DT, MK96R125DT, MF96ORFCDT1, MF961ORFCDT, MF962ORFCDT**
 - Multifunction measuring units pulse output (via the Pulse Concentrators Cat.Nos **IF4C001*** or **SXMIMP*** or pulse input of Energy counters Cat.Nos **CE2DF3DTCL1***, **CE4DF3DTCL1*** and **CE4TBDTCL1***):
 - Nemo D4-L +, Cat.Nos **MF6HTU0003, MF6HTU0006, MF6HTU000H**
 - Nemo D4-Le, Cat.Nos **MFD4411, MFD4412**
 - Nemo 72-Le, Cat.Nos **MF72411, MF72412**
 - Nemo 96HD-Le, Cat.Nos **MF96411, MF96412**

4.1 Measuring / metering devices (continued)

- Range **CONTO**
 - Energy counters RS485:
 - Conto D1, Cat.No **CE11165A4**
 - Conto D2, Cat.Nos **CE20195A4, CE2DF3DTCL1**
 - Conto D2 MID, Cat.Nos **CE2DMID11, CE2DF3DTMID**
 - Conto D4-Pd, Cat.Nos **CE4DT06A4, CE4DF3DTCL1**
 - Conto D4-Pd MID, Cat.Nos **CE4DMID31, CE4DF3DTMID**
 - Conto D4-Pt, Cat.Nos **CE4DT12A4, CE4DT12A6, CE4DT14A4, CE4DT14A6, CE4TBDTCL1**
 - Conto D4-Pt MID, Cat.Nos **CE4DMID01, CE4TBDTMID**
 - Conto D6-Pd, Cat.No **CE6DT1256**
 - Conto D6-Pd MID, Cat.No **CE6DMID56**
 - Energy counters pulse output (via the Pulse Concentrators Cat.Nos **IF4C001*** or **SXMIMP*** or pulse input of Energy counters Cat.Nos **CE2DF3DTCL1***, **CE4DF3DTCL1*** and **CE4TBDTCL1***):
 - Conto D1, Cat.No **CE11165A2**
 - Conto D1 MID, Cat.No **CE1DMID12**
 - Conto D2, Cat.Nos **CE20195A2, CE2DF30PCL1**
 - Conto D2 MID, Cat.Nos **CE2DMID12, CE2DF30PMID**
 - Conto D4-Pd, Cat.Nos **CE4DT06A2, CE4DT06A23F, CE4DF30PCL1**
 - Conto D4-Pd MID, Cat.Nos **CE4DMID22, CE4DMID32, CE4DF30PMID**
 - Conto D4-Pt, Cat.Nos **CE4DT12A2, CE4DT14A2, CE4TB0PCL1**
 - Conto D6-Pd, Cat.No **CE6DT1252**
 - Conto D6-Pd MID, Cat.No **CE6DMID52**

4.1 Measuring / metering devices *(continued)*

- Range NEMO SX
 - Multifunction measuring devices:
 - Single-phase connection via Closed Rogowski coil(s) – Cat.Nos **SX3M63** and **SXMM63**
 - Three-phase connection via Closed Rogowski coil(s) – Cat.Nos **SXMT63** and **SXMT125**
 - Single-phase or Three-phase (configurable) connection with CT- Cat.No **SXMMT5**
 - Three-phase connection via Open Flexible Rogowski coils - Cat.Nos **SXMR02, SXMR04, SXMR06** and **SXMR08**
 - State and Control modules:
 - Multifunction State Module - Cat.No **SXMC02**
 - Multifunction Control Module - Cat.No **SXM0C1**
 - via Modbus/NEMO SX interface - Cat.No **SXI485**

- Gas counters
 - Any device with pulse output via the Pulse Concentrators Cat.Nos **IF4C001*** or **SXMIMP*** or pulse input of Energy counters Cat.Nos **CE2DF3DTCL1***, **CE4DF3DTCL1*** and **CE4TBDTCL1***

- Water counters
 - Any device with pulse output via the Pulse Concentrators Cat.Nos **IF4C001*** or **SXMIMP*** or pulse input of Energy counters Cat.Nos **CE2DF3DTCL1***, **CE4DF3DTCL1*** and **CE4TBDTCL1***

* **Note:** Pulse Concentrator and Energy counters with pulse input must be properly programmed to be compatible with the type of counter (*Refer to the technical documentation of each device*)

- Range **Power factor controller ALPTEC**
 - ALPTEC3.2 + ExtRS485
 - ALPTEC5.2 + ExtRS485
 - ALPTEC8.2 + ExtRS485
 - ALPTEC8 + ExtRS485

- “Generic” Measurement/Counting Devices with Modbus RS485 output
 - Any “other manufacturers” meter or counter with Modbus RS485 output, **limited only to positive active energy**

5. Languages available

Languages:

- 中国
- Deutsch
- English
- Español
- Français
- Français (Belgique)
- Ελληνικά
- Italiano
- Nederlands (Belgie)
- Nederlands
- Polski
- Portuguese
- Русский

6. Preliminary operations

ATTENTION!

Before commissioning the installation we recommend you to verify on the IME “e-catalogue” site if a software update is available.

Download the update file from IME site to your computer. This file will be used to update the firmware.

(After downloading the update file follow the procedure detailed on pages 21 to 22 of this manual)

7. Implementation

7.1 Local settings

Local settings / configuration

- Procedure to configure the Web Server from a computer directly connected to it.

Materials required

- Web Server’s instruction sheet
- Web Server’s user manual
- PC with a web browser (Chrome, Firefox, etc.)

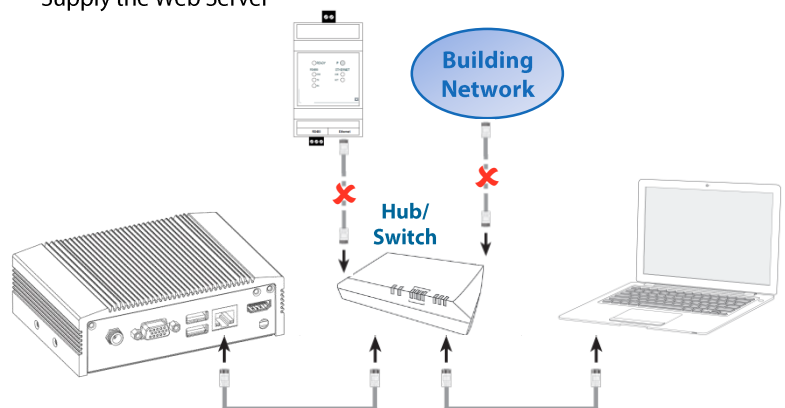
Note: The local settings must be made mandatorily by a computer

Useful Information

- IP network parameters for Web Server (use the [Parameters Table of the Web Server](#))

7.2 Connecting the device to a PC - Programming

- Connect the Web Server directly to a PC by the Ethernet cable (is possible to pass through a switch)
 - **Note: In this phase don’t connect the Web Server to other devices (Gateways, etc.) or to the Building Network**
- Supply the Web Server



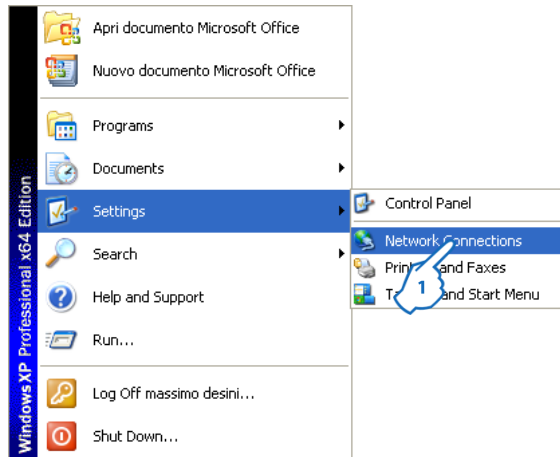
7.3 Web Server default settings

- IP Address: 192.168.1.100
- Subnet Mask: 255.255.255.0
- Default Gateway: 192.168.1.1

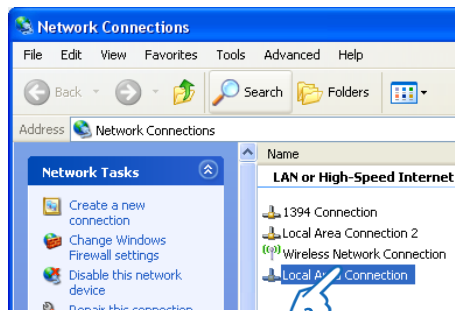
Note: Web Server and Gateway have the same default settings

7.4 LAN configuration of the computer

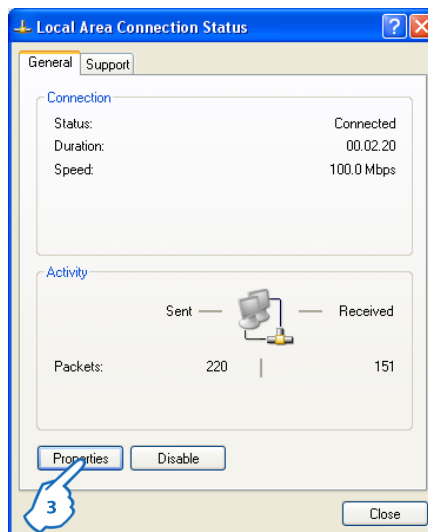
Follow the procedure:



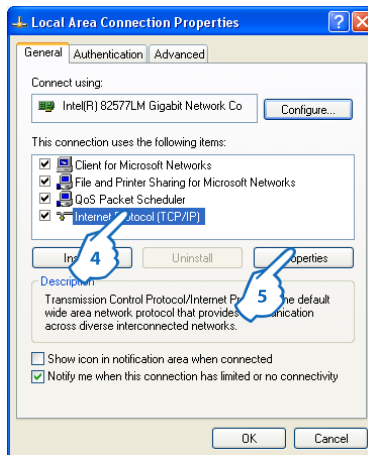
1. In the Start menu choose “Settings” then click “Network Connections”



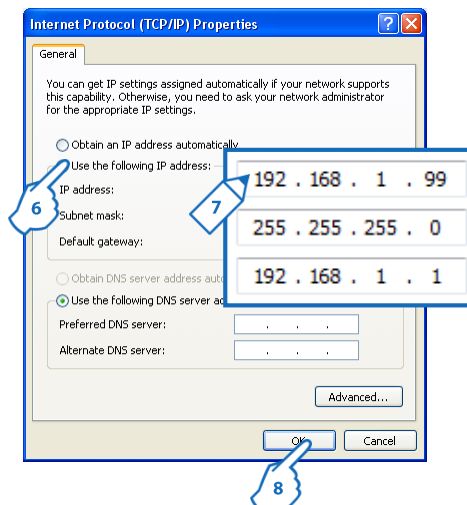
2. Click “Local Area Connection”



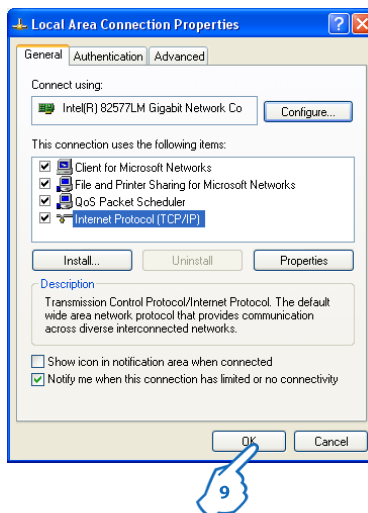
3. Click “Properties”



4. Click "Internet Protocol (TCP/IP)"
5. Click "Properties"



6. Click "Use the following IP address"
7. Enter the LAN parameters as shown
8. Click "OK" to confirm

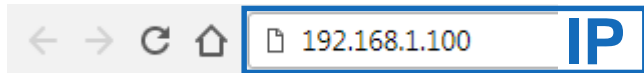


9. Click "OK" to confirm

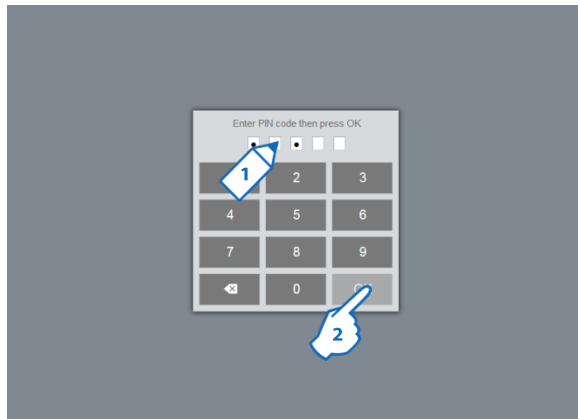
7.5 Configuration of the Web Server

7.5.1 Network Settings - Personal configuration

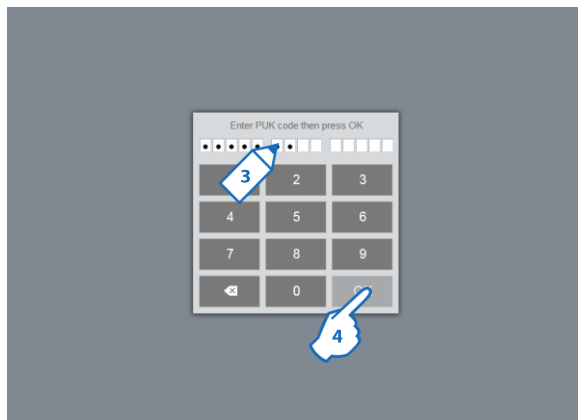
To access to the Web Server, type the IP address **192.168.1.100** (default IP) in the web browser.



Web Server's Login page appears

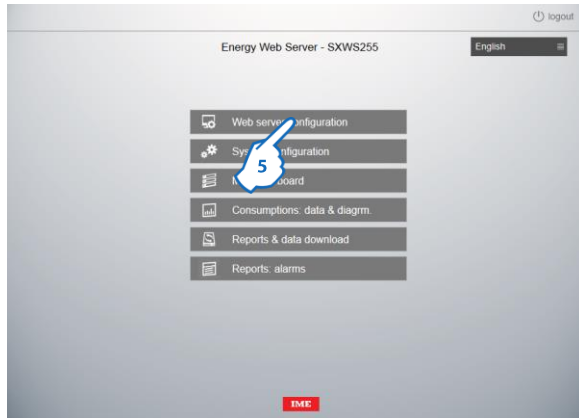


1. Type the access PIN code **99999** (default PIN)
2. Click "OK"

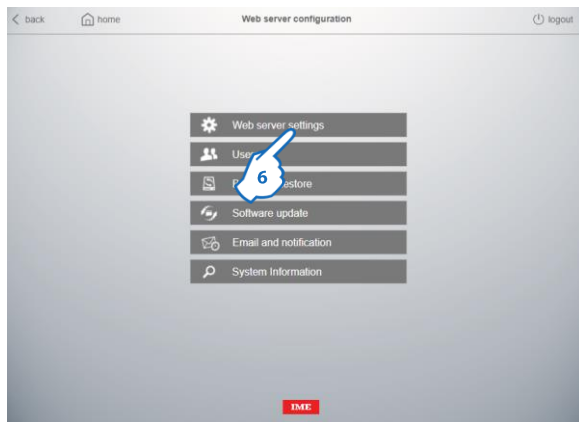


3. Type the access PUK code **00000 9999 00000** (default PUK)
4. Click "OK"

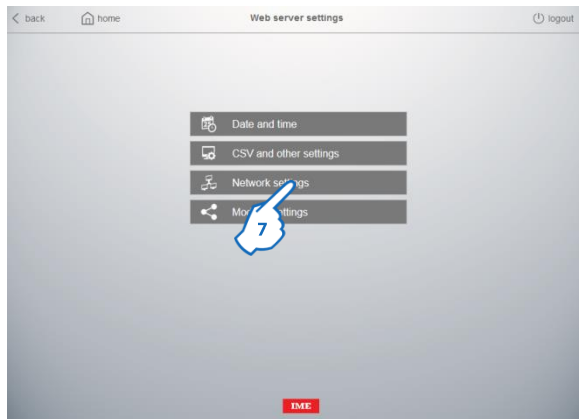
Web Server's Home page appears.



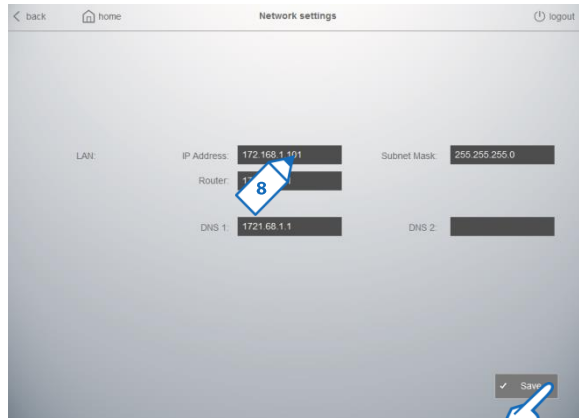
5. Click "Web Server configuration"



6. Click "Web server settings"



7. Click "Network settings" to configure the LAN properties of the Server



8. Enter the new LAN settings.

Example of IP network settings to configure on the Web Server

- IP Address: **172.168.1.101**
- Subnet mask: **255.255.255.0**
- Default gateway: **172.168.1.1**

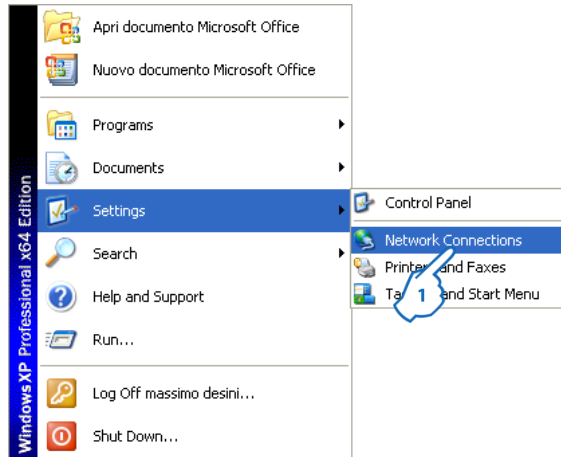
9. Click "Save" **2 times** to confirm

Note: Now the Web server has new network parameters

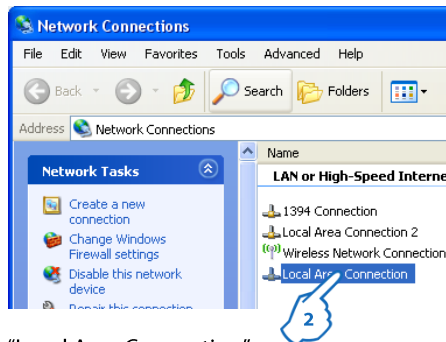
7.5.2 Access with new Network parameters

- After changing of the Network parameters of the Server, it is necessary to configure manually an IP address compatible with the new IP address of the web server as shown below:

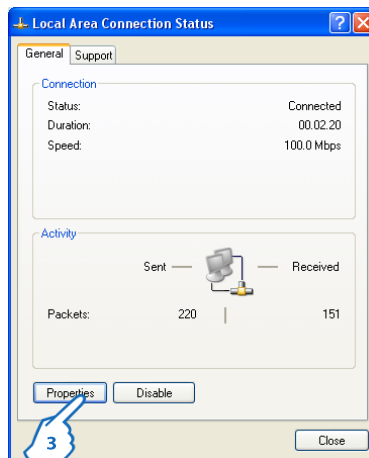
(in the example the server has the IP 172.168.1.101 → use 172.168.1.99)



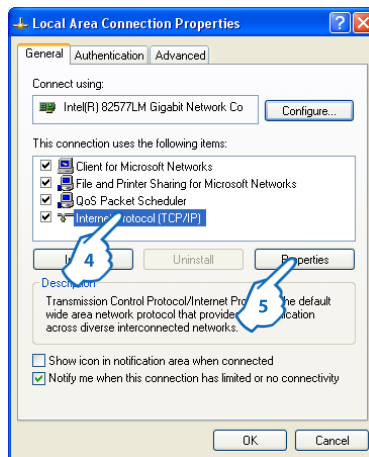
1. In the Start menu choose "Settings" then click "Network Connections"



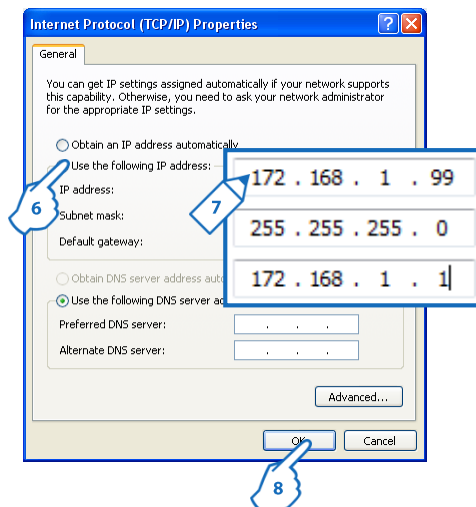
2. Click "Local Area Connection"



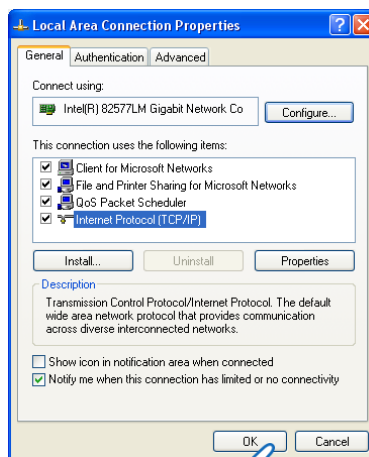
3. Click "Properties"



4. Click "Internet Protocol (TCP/IP)"
5. Click "Properties"

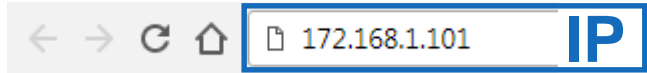


6. Click "Use the following IP address"
7. Enter the LAN parameters as shown
8. Click "OK" to confirm

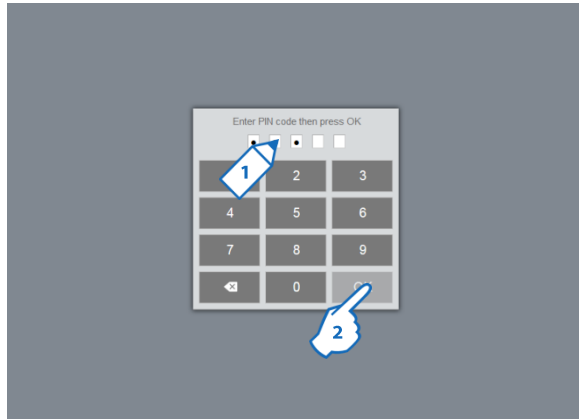


9. Click "OK" to confirm

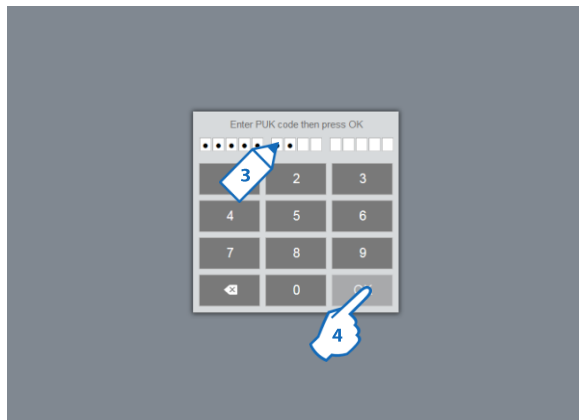
To access to the Web Server, type the new IP address **172.168.1.101** (in the example) in the web browser.



Web Server's Login page appears

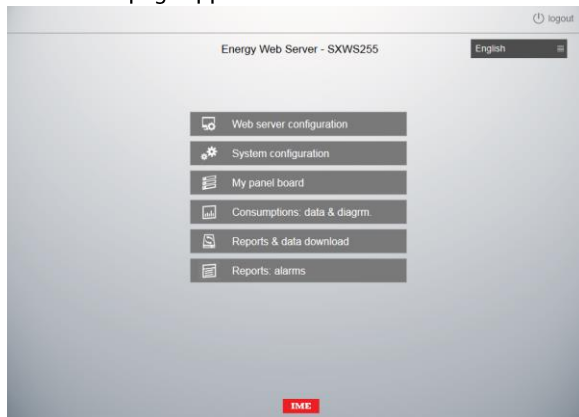


1. Type the access PIN code **99999** (default PIN)
2. Click "OK"



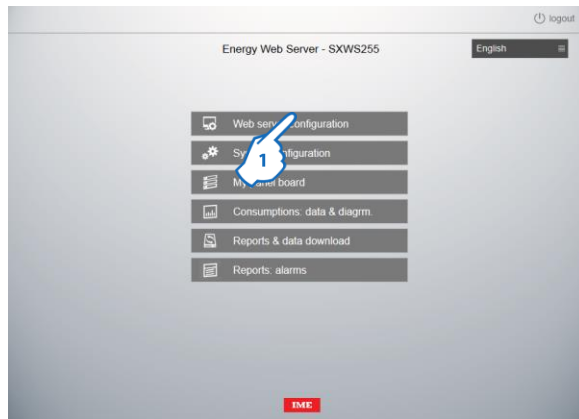
3. Type the access PUK code **00000 9999 00000** (default PUK)
4. Click "OK"

Web Server's Home page appears.

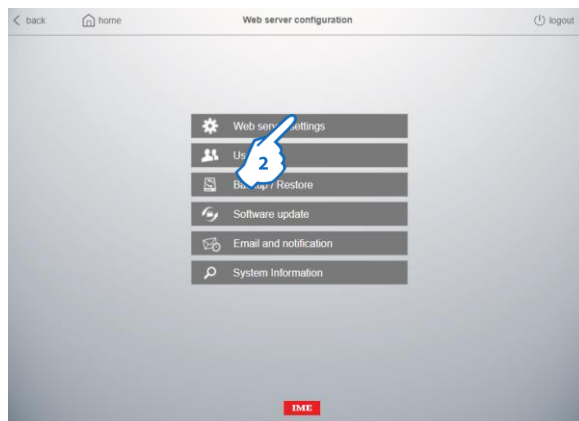


7.6 Date and Time settings

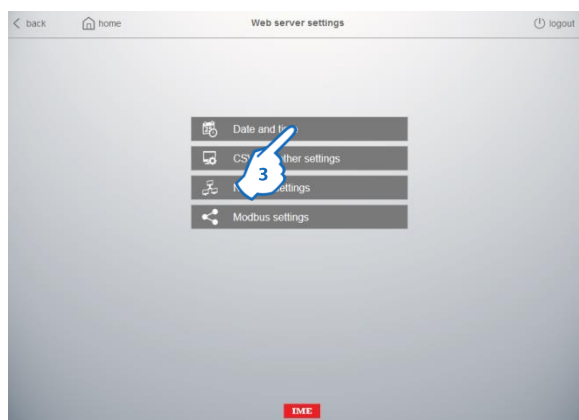
In the Web Server's Home page



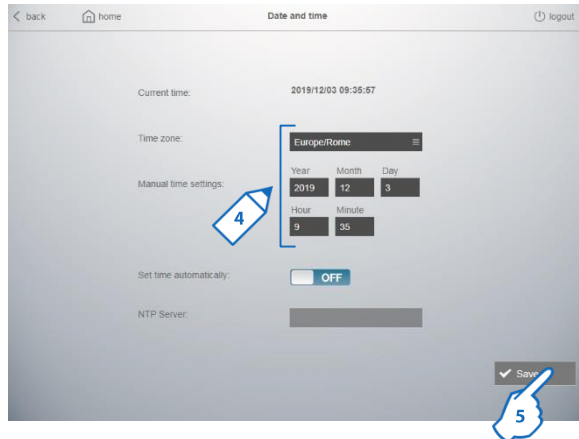
1. Click "Web Server configuration"



2. Click "Web server settings"

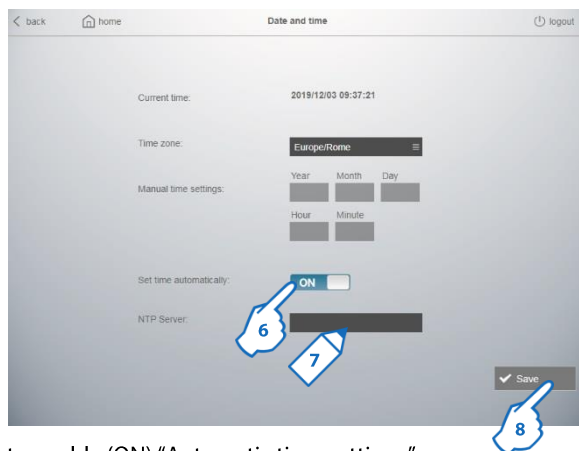


3. Click "Date and Time" to set these parameters



4. Enter the new parameters
 - Time zone
 - Date and time
5. Click "Save" to confirm

Alternatively, you can use the "Automatic time settings" function that allow the Web Server reach the clock from a Network time protocol (NTP) Server.



6. Click to enable (ON) "Automatic time settings".
7. It is possible to set:
 - the IP address of an internal NTP server, if the Web server is connected to an intranet that doesn't allow Internet connection
 - the address of a public NTP server, if the Web server is connected to Internet (e.g. of an European public NTP server: **0.europe.pool.ntp.org**)
8. Click "Save" to confirm

Note: To get correct Date & Time using the "Automatic time settings", is fundamental to set the correct Time zone.

7.7 Update of the Web Server

Materials required:

- File downloaded from the IME “e-catalogue”:

- Energy_Manager_Web_Server_SXWS10_32_255_v_r_b.zip



Energy_Manager_Web_Server = Product Name

SXWS10_32_255 = Catalog numbers

Energy_Manager_Web_Server_SXWS10_32_255_v_r_b.zip

v_r_b = Version of the embedded application

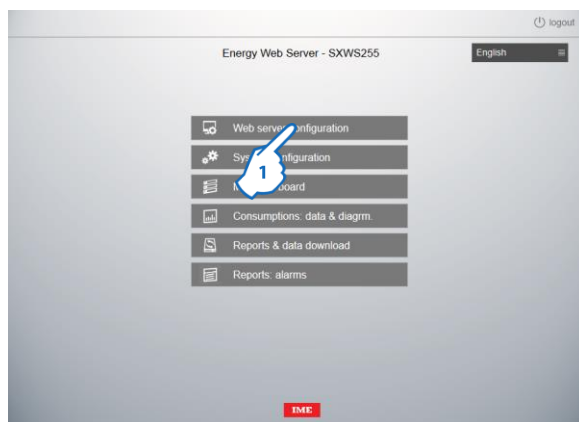
The folder .zip contains the following files:

- File “.jar”: web server’s update package

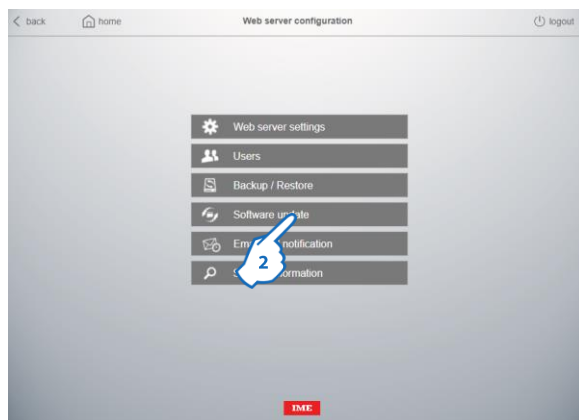
- Procedure for updating the Web Server: follow the procedure

Access to the Web server typing PIN and PUK codes

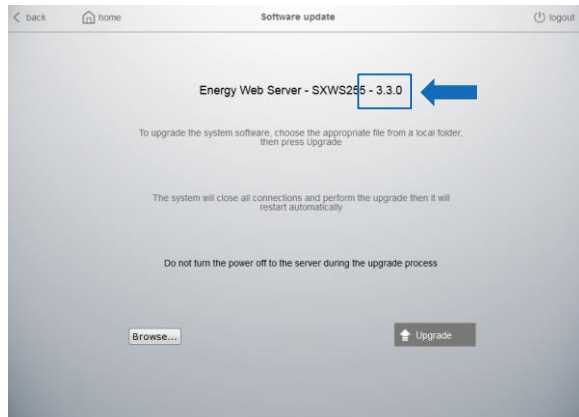
Web Server’s home page appears



1. Click “Web Server configuration”



2. Click “Software update”



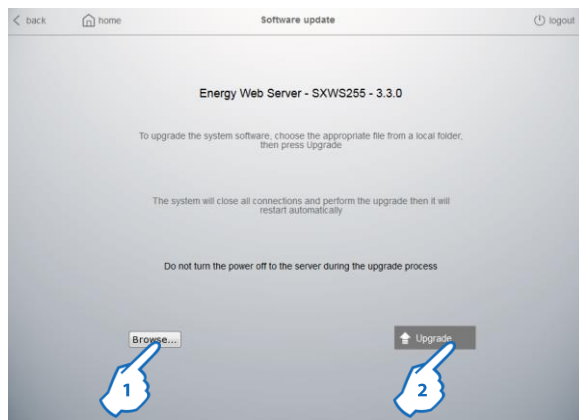
Compare the version of the installed software with the version of the file received from technical customer service. **Update the Software if the file version is more recent than the installed version.**

7.7.1 Update procedure

- From the compressed folder, extract on your computer the file: "wsmeasure.jar"

Note: Web server automatically recognizes the type of license.

In the "Software update" page

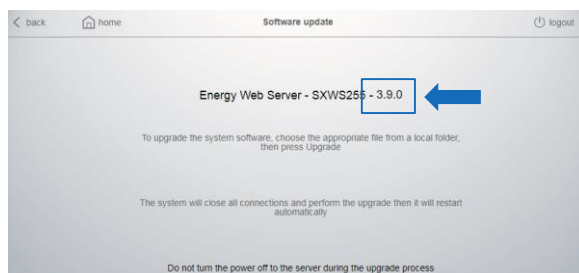


1. Click "Browse" to select the file ".jar" from your computer

2. Click "Upgrade"

IMPORTANT: please allow the time for the updating procedure: about 30 seconds

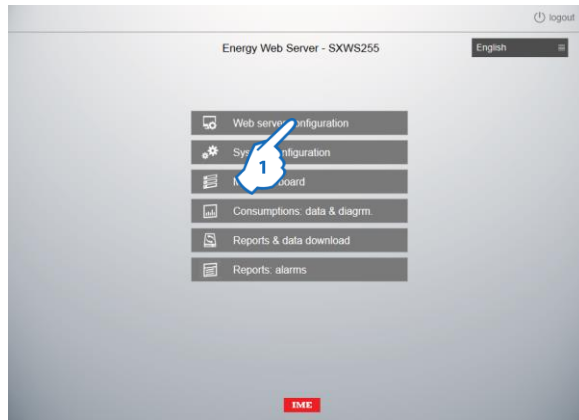
- Verify that the update has been done checking the software version on the "Software's update" page



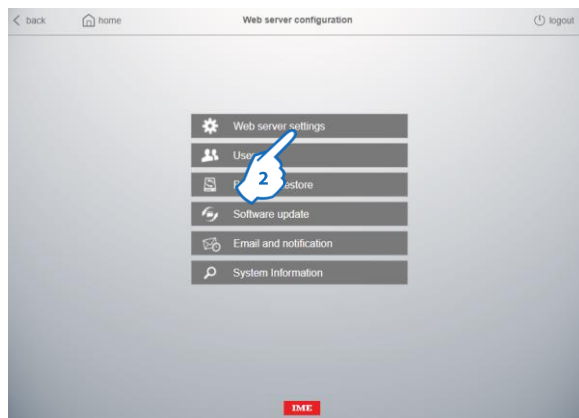
7.8 Changing of the Web Server's language

7.8.1 Changing of the default language

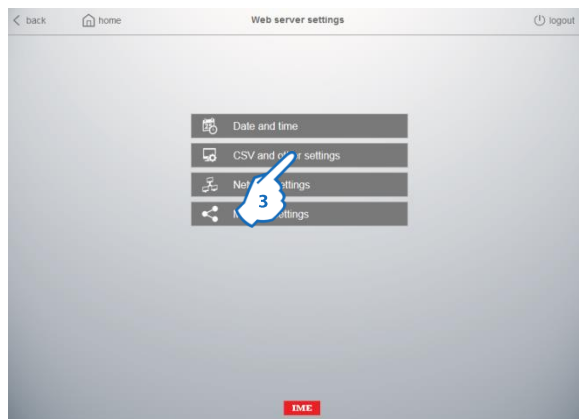
In the Web Server's home page



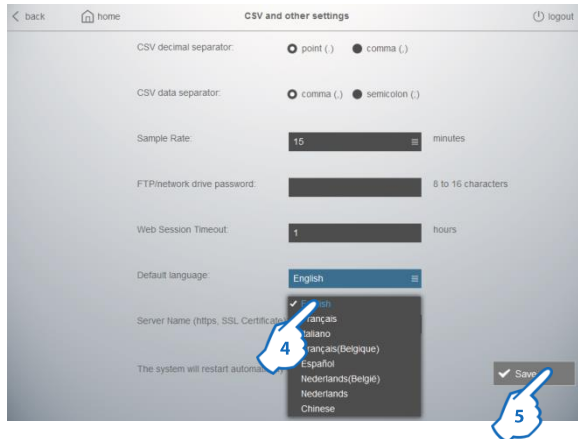
1. Click "Web Server configuration"



2. Click "Web server settings"



3. Click "CSV and other settings"



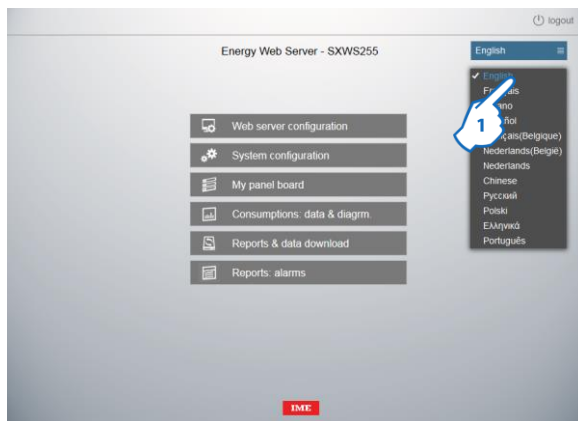
4. Choisir la langue parmi la liste des langues

5. Cliquer sur "Sauvegarder" pour confirmer

Note: la langue sera changée à la prochaine connexion.

7.8.2 Changing of the display language

In the Web Server's Home page



1. Choose the proper language from the list box.

Note: this operation doesn't change the default language.

7.9 Remote settings

Settings / configurations of the electrical installation

- Procedure to configure the different devices on the web server

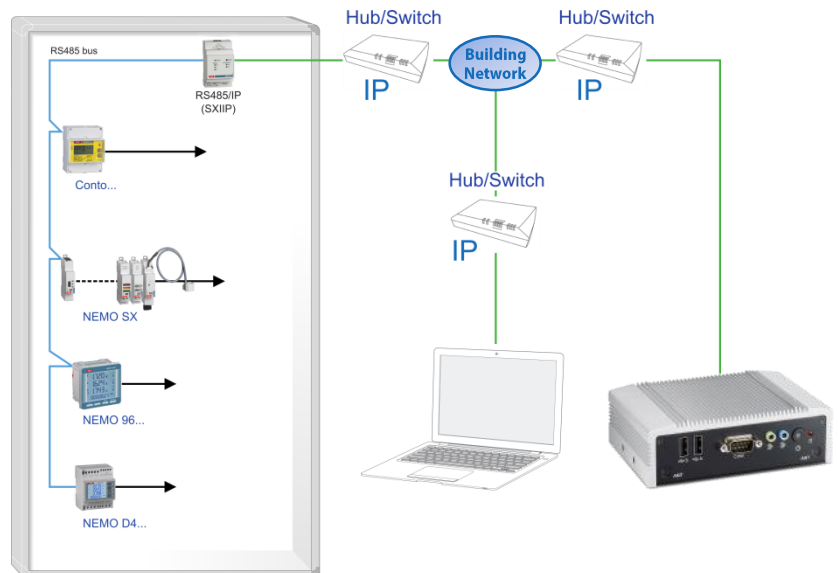
Materials required

- Web Server's user manual
- A computer with a web browser (Chrome, Firefox, etc.)

Useful Information

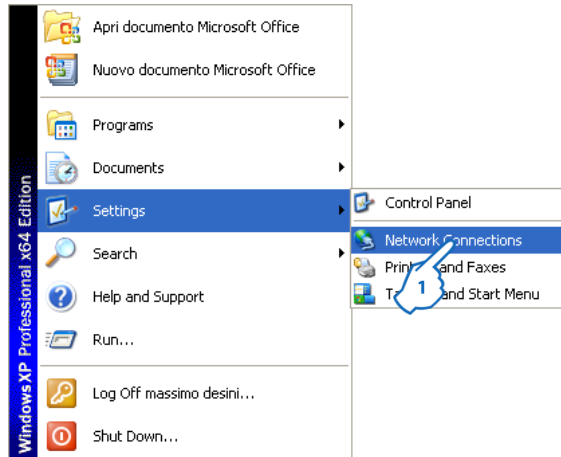
- Network and RS485 bus parameters for Gateways and Devices (use the [Parameters Table of the Web Server](#))

7.10 Connection schemes - Normal Use

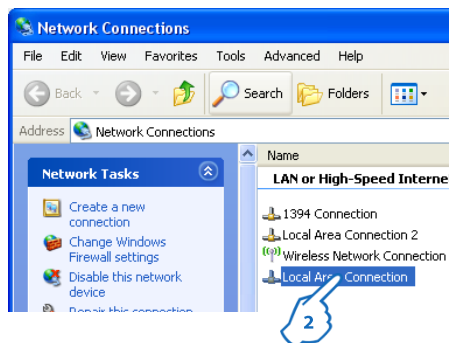


7.11 LAN configuration of the computer - Automatic IP address

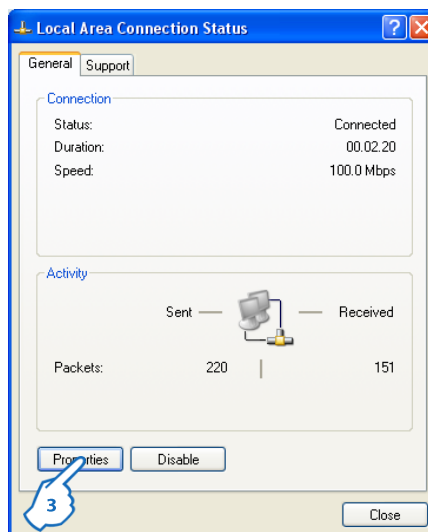
Follow the procedure:



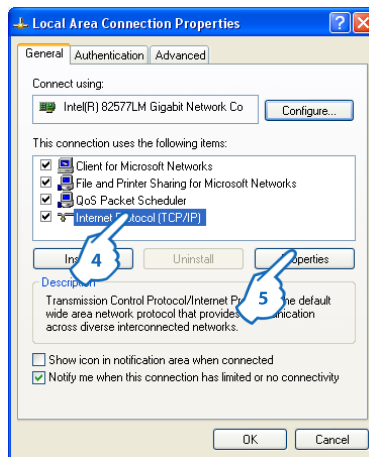
1. In the Start menu choose "Settings" then click "Network Connections"



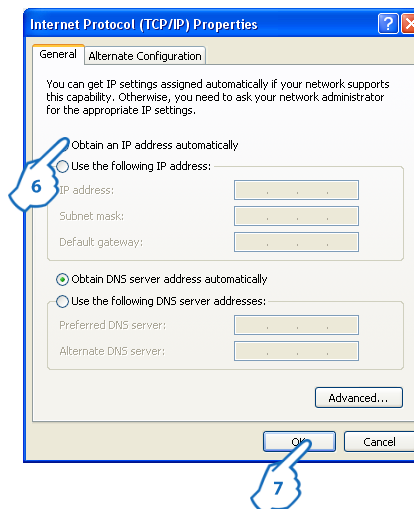
2. Click "Local Area Connection"



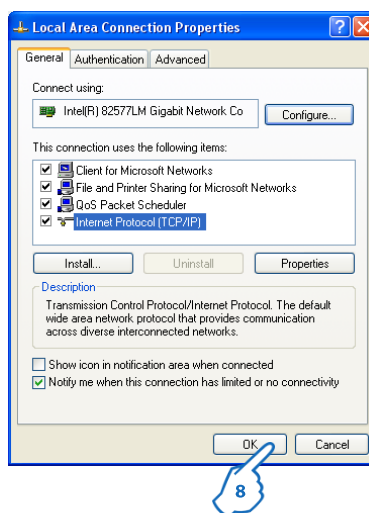
3. Click "Properties"



4. Click "Internet Protocol (TCP/IP)"
5. Click "Properties"



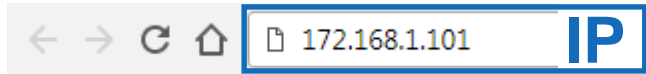
6. Click "Obtain an IP address automatically"
7. Click "OK" to confirm



8. Click "OK" to confirm

7.12 Configuration of the electric installation in the Web Server - "System configuration"

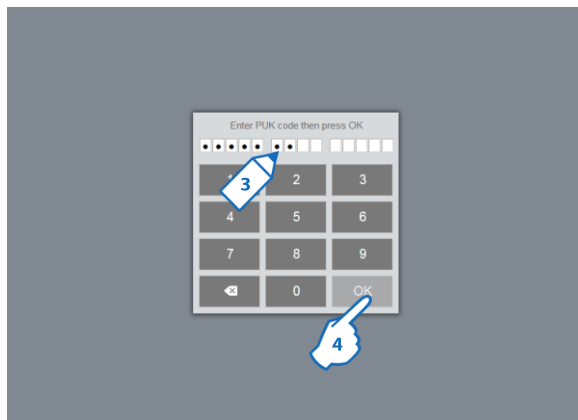
Type the [set IP address](#) in the web browser.



Web Server's login page appears

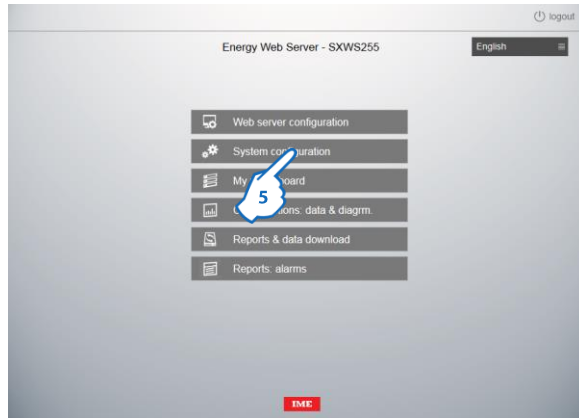


1. Type an access PIN code (ex. 99999 - default PIN)
2. Click "OK"



3. Type the access PUK code 00000 9999 00000 (default PUK)
4. Click "OK"

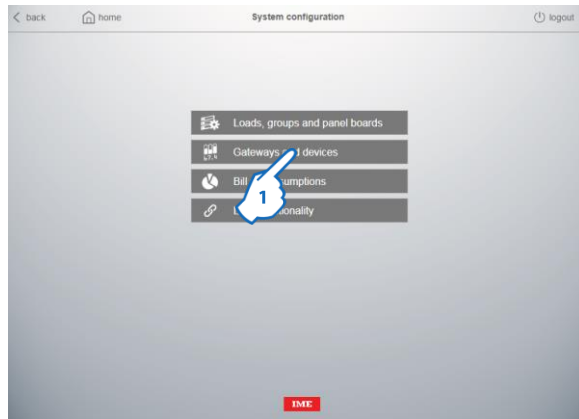
Web Server's Home page appears.



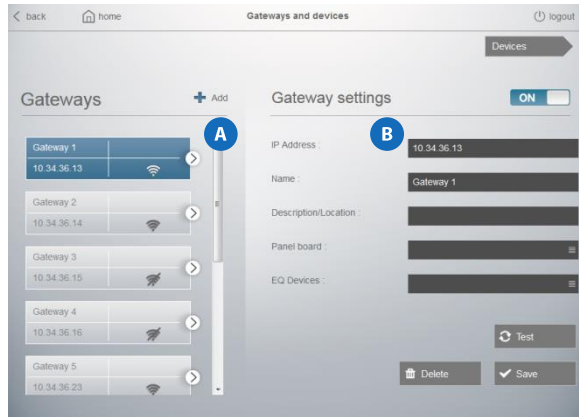
5. Click "System configuration"
System configuration page appears

- Configuration sequence:
 - Gateways and Devices configuration
 - Loads, groups and panel boards configurations
 - Bill of Consumptions configuration

7.12.1 Gateways and Devices configuration

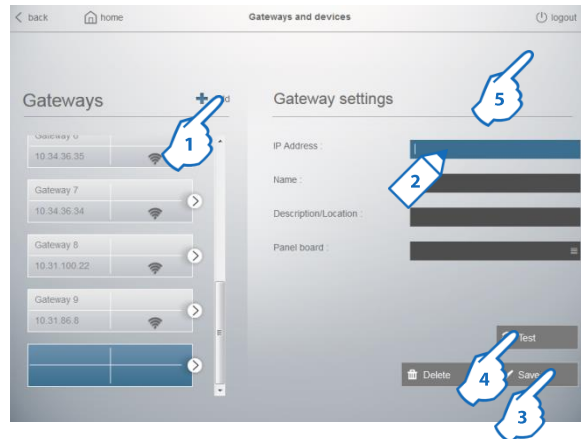


1. Click "Gateways and devices"
Gateway's settings page appears

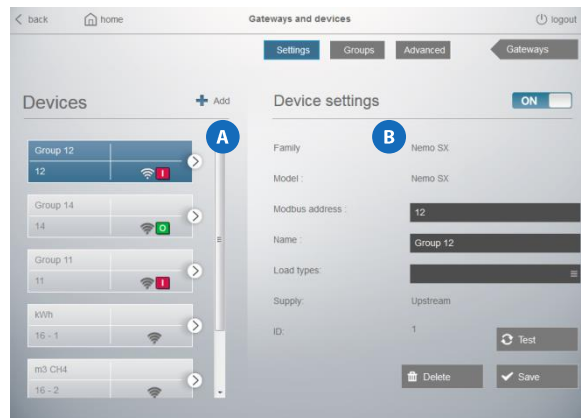


The page is divided into two sections:
section **A** is the "Gateways" area.
section **B** shows the "Gateway Settings" area, where the configuration fields for the selected gateway are available.

7.12.1.1 Creating and Saving new Gateways

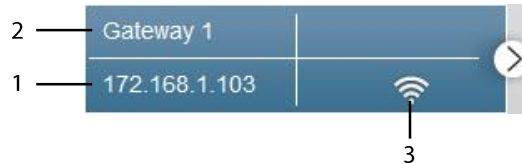





1. Click "Add"
 2. Assign the gateway parameters:
 - IP Address (required parameter)
 - Name (required parameter)
 - Description/Location (optional parameter)
 3. Click "Save"
 4. Click "Test" to verify the correct operation of the communication between the Web Server and the Gateway
 5. Click "Devices" to configure the physical or virtual devices connected to the Gateway
- Device's settings page appears



The page is divided into two sections:
 section **A** is the "Added Devices" area.
 section **B** shows the "Device Settings" area, where the configuration fields for the selected device are available.

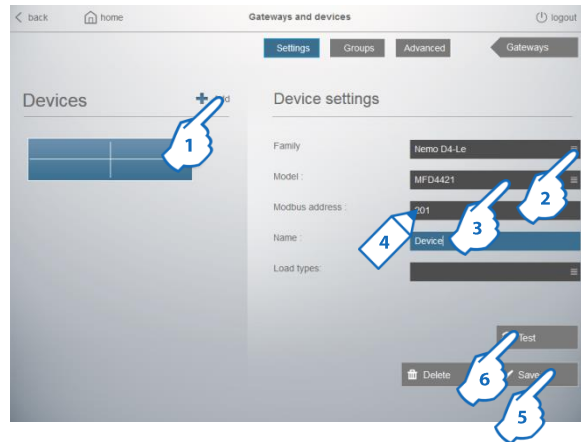
• Description of the Gateway selection button



1. IP address assigned to the gateway
2. Name of the gateway
3. Gateway status
 -  On
 -  Off
 -  Communication error

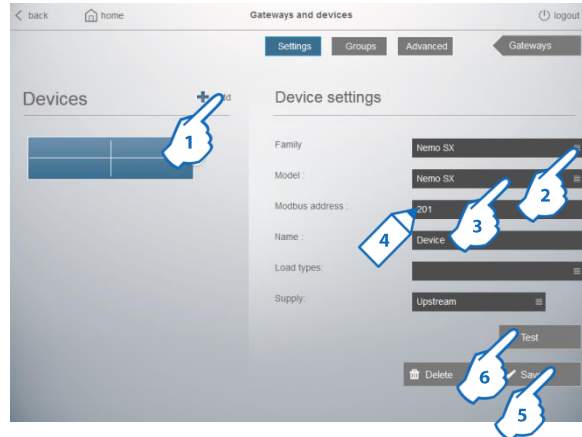
7.15.1.2 Creating and Saving of “Physical” Devices

- Procedure for Measure device with RS485 output



1. Click “Add”
 2. Choose the Device family from the families list (e.g. Nemo D4-Le)
 3. Choose the Model from the models list (e.g. MFD4421)
 4. Assign the Device parameters:
 - Modbus address (required parameter)
 - Name (required parameter)
 - Load type (optional parameter)
 5. Click “Save”
 6. Click “Test” to verify the correct operation of the communication between the Device and the Gateway
- Repeat the operations 1. to 6. to add more devices

- Procedure for NEMO SX modules



1. Click "Add"
 2. Choose the Device family from the families list
 3. Choose the model from the model list
 4. Assign the Device parameters:
 - Modbus address of the Device/Group of devices NEMO SX (required parameter)
 - Note:** in case of a NEMO SX system in "remote addressing mode", the Modbus address is composed as shown: "address of the device/group of devices" - "address of the NEMO SX interface to which the devices are connected" (e.g.: device address: 2, interface address: 1 → write: 2-1)
 - Name (required parameter)
 - Load type (optional parameter)
 - Supply: current direction in the measuring sensors (required parameter for cat. Nos. SXMM63/MT63/MMT5)
 5. Click "Save"
 6. Click "Test" to verify the correct operation of the communication between the Device and the Gateway
- Repeat the operations 1. to 6. to add more devices

Note: pulse concentrator module NEMO SX (cat. no SXMIMP) is to be managed as a standard pulse concentrator (see next page).

- Details for Measurement modules NEMO SX

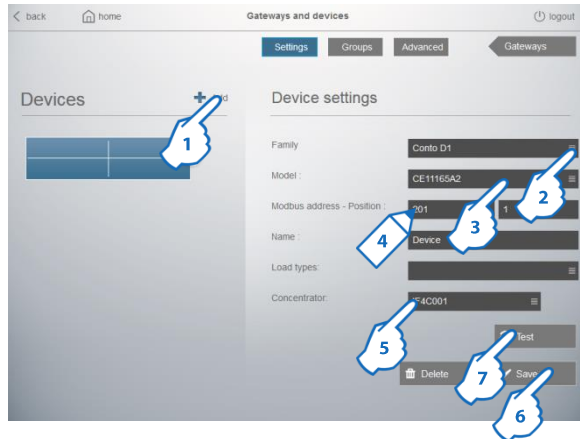
Supply: to ensure correct measurement of various electrical quantities, it is necessary to indicate the current versus trough the CT(s) or Rogowski sensor(s):
current versus upstream of tore/CT → choose Upstream (default setting)



current versus downstream of tore/CT → choose Downstream



- Procedure for Measure devices with pulse output (Electricity, Water and Gas counters)

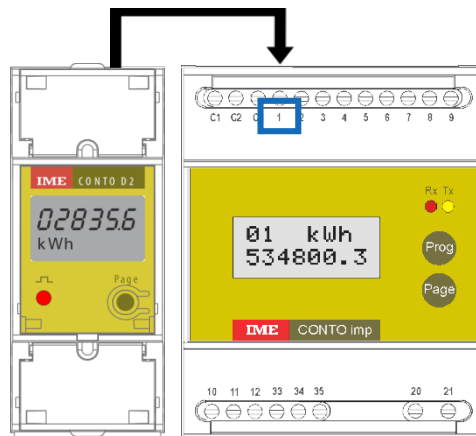


1. Click "Add"
 2. Choose the Device family from the families list (e.g. Conto D1)
 3. Choose the model from the models list (e.g. CE11165A2)
 4. Assign the Device parameters:
 Modbus address (address of the pulse concentrator) - Position (required parameters)
 Name (required parameter)
 Load type (optional parameter)
Note: for Water and Gas Counters, load type is automatically assigned
 5. Choose the Concentrator from the list (e.g. IF4C001)
 6. Click "Save"
 7. Click "Test" to verify the correct operation of the communication between the Device and the Gateway
- Repeat the operations 1. to 7. to add more devices

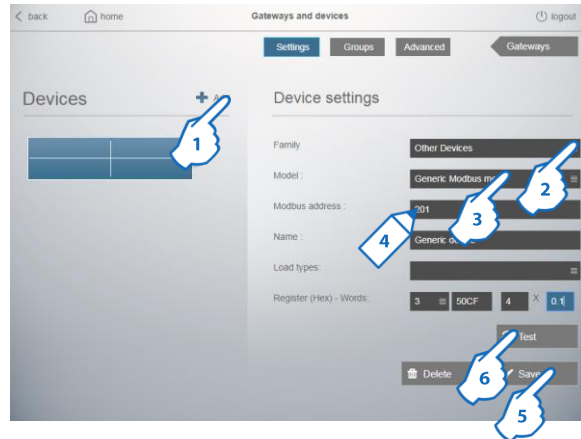
- Details for Pulse output Meters (Electricity, Water and Gas counters)

Position: is the input of the Concentrator (Cat. Nos **IF4C001** or **SXMIMP***) or of the Energy counter with pulse input counter function (Cat.Nos CE2DF3DTCL1, CE4DF3DTCL1 or CE4TBDTCL1) on which the pulse output of the counter is connected.

(* NEMO SX Device)



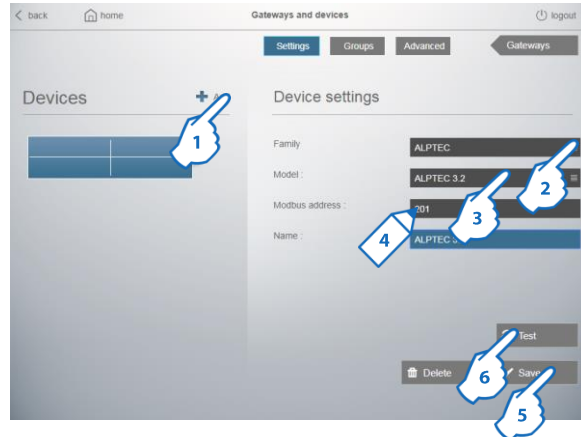
- Procedure for “Generic” Measurement/Counting Devices with Modbus RS485 output



1. Click “Add”
 2. Choose the Family “Other devices” from the families list
 3. Choose the model “Generic Modbus meter” from the models list
 4. Assign the Device parameters:
 - Modbus address of the Measurement / Counting device (required parameter).
 - Name (required parameter)
 - Load type (optional parameter)
 - Register (hex) - Word: in these 4 fields you must enter the following parameters:
 - Modbus register read code (3 or 4)
 - Modbus register of positive active energy (value in hexadecimal)
 - number of words to read
 - multiplying factor to use to obtain the correct value

Note: these four information can be found in the documentation of the meter / counter, provided by the device manufacturer.
 5. Click “Save”
 6. Click “Test” to verify the correct operation of the communication between the Device and the Gateway
- Repeat the operations 1. to 6. to add more “Generic” measurement/counting devices

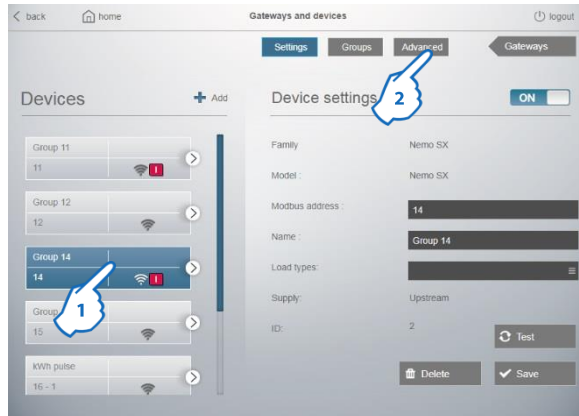
- Procedure for Power factor controller ALPTEC



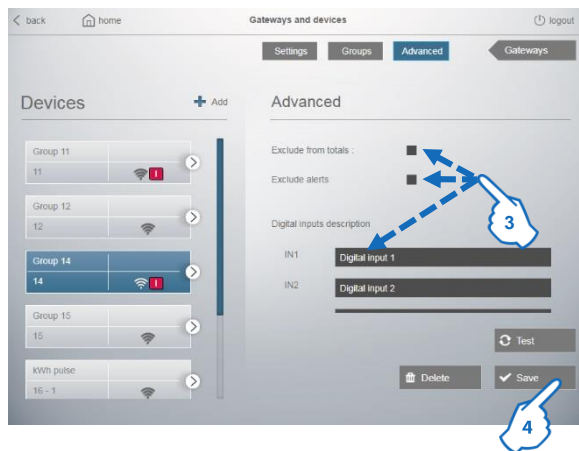
1. Click "Add"
 2. Choose the Device family "ALPTEC" from the families list
 3. Choose the Model from the models list
 4. Assign the Device parameters:
 - Modbus address (required parameter)
 - Name (required parameter)
 5. Click "Save"
 6. Click "Test" to verify the correct operation of the communication between the Device and the Gateway
- Repeat the operations 1. to 6. to add more Power factor controllers

7.12.1.3 Advanced options

In the “Devices” page



1. Select a Device
2. Click “Advanced”



3. In this page for each device configured by the user, it is possible to set following options:

- **“Exclude from totals”**. Select this option if you don’t want that the quantities measured by this device are added on the histograms in the “Grand Total” and “Partials” page of the menu “Consumptions”.

Histograms of consumptions will be displayed only in the “Details” page of the menu “Consumptions”. (see details on page 39)

- **“Exclude alerts”**. Option available for NEMO SX and ALPTEC devices.

Allows you to disable/exclude reports of alert(s) on events related to these types of devices.

Note: configuration of the type of events that cause a report, is available in the “Alert settings” page of the “Email and notification” menu of the Web server (see § 8.5.4)

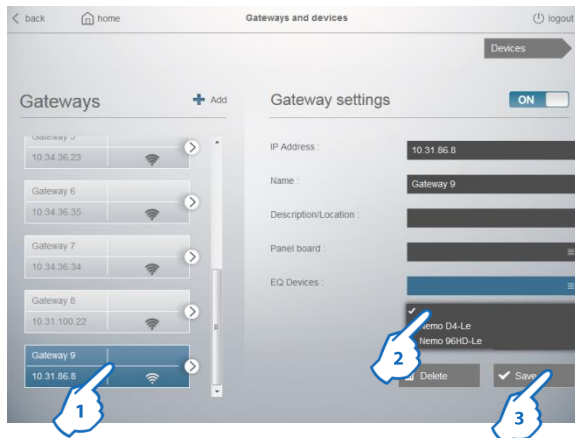
- **Customize the description of inputs and outputs** for Multifunction State (SXMC02) and Multifunction Control (SXMOC1) Modules, of the NEMO SX range, **in generic configuration**.

4. Click “Save” to confirm settings

• **Procedure to activate the “EQ device” function**

EQ device is an optional function used to perform the energy quality check according to standard EN 50160.

To do this is necessary set a device as “EQ device” in Gateways and devices page.



1. Select a Gateway
2. In correspondence of EQ device choose from the list box the device to set as energy quality device (in the list box are displayed only devices with THD or THD + Harmonics functions added to the selected gateway).
3. Click “Save”

Note: for each gateway is possible to set only one device as “EQ device”.

Software perform automatically the weekly check and shows the result in the Consumption Details page with the label “LAST WEEK EN50160 CHECK: OK or KO”



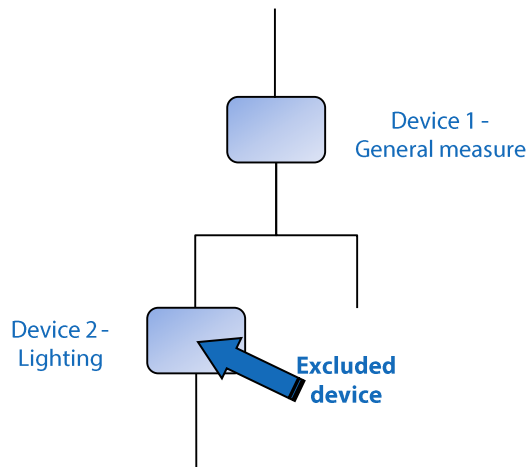
At the same time the software creates the folder “eqcheck” in the web server’s data base saved on the HDD of the Web Server (see 8.4.3).

• Details for the option “Exclude from totals”

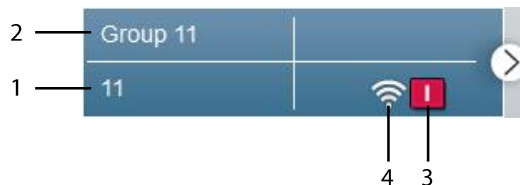
This option must be enabled if the measurement of a device is cumulative with the measurement carried out by a general measuring device.

In the example: consumptions of the line "Lighting" would be counted twice in the histograms of global consumption.

The device 2 will be excluded from the totals to ensure the accuracy of the measurements, but its data will be displayed on the page "Details" of the menu "Consumption".



• Description of the device selection button



1. Modbus Address (Modbus Address - Position for the counters with pulse output)
2. Name of the device
3. This symbol appears only if the device is a protection device and shows the circuit-breaker state:
 - Open
 - Closed
 - Tripped
4. Device status
 - On
 - Off
 - Communication error

7.12.1.4 System functions

– ON/OFF Button

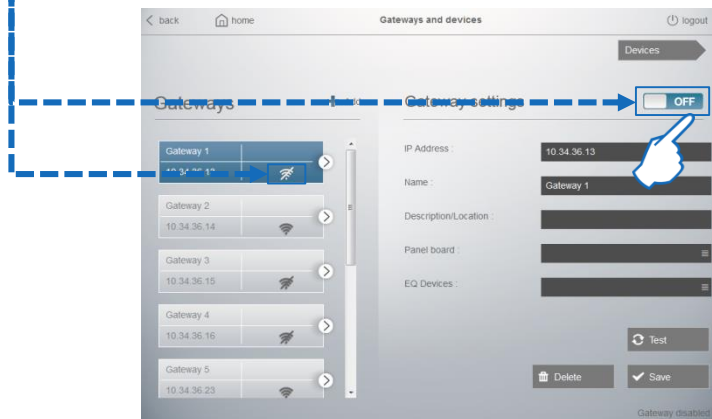


Allows to enable/disable a Gateway or a Device; the function is available only for Gateways and Devices.




1. Click "ON" to switch off a Gateway / Device

The selected Gateway / Device and the button switch into the OFF state.

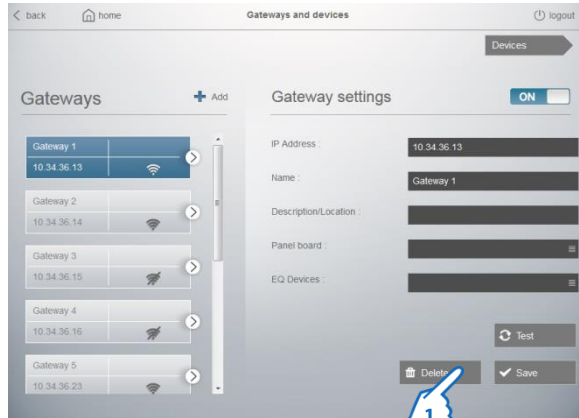


Note:

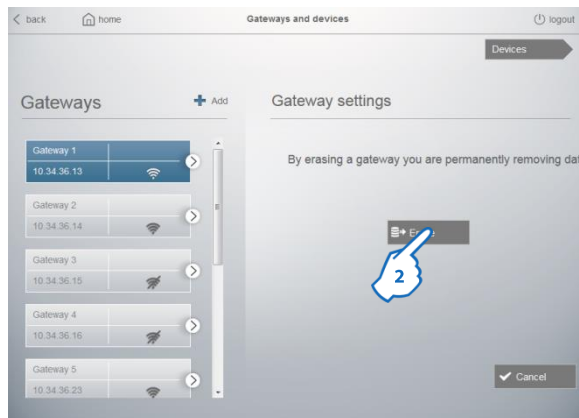
- The deactivation of a Gateway causes the deactivation of all devices connected to it.
- If a device is turned-off, its measurement data will not be displayed in the "Devices" page.
- To return a Gateway / Device in the ON state, simply click "OFF"

– Button  Delete

Allows to erase a Gateway or a Device.



1. Click “Delete” in the “Gateway settings” or “Device settings” page
A confirmation page appears.



2. Click “Erase” to confirm the deletion of the Gateway or the Device

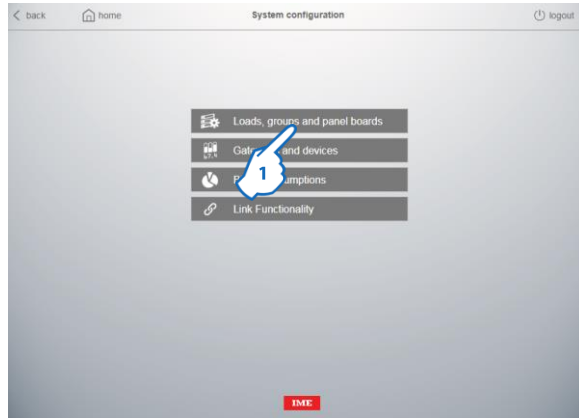
Note1: To erase a Gateway, is necessary delete all the devices connected to it at first!

• **LIST OF REQUIRED PARAMETERS:**

- Highly required parameters - Address/Position:
 - ✓Modbus Address, a different Modbus address for each device connected to the same bus RS485
 - ✓Positions, different for wiring reasons; (only for Counters with pulse output)
- Essential parameter – Name:
 - ✓Impossible to use several times the same name
 - ✓If forgotten during the settings, Web Server will assign a default value (IP Address for Gateway, Modbus Address for Devices RS485, Modbus Address-Position for Devices with pulse output).
- Parameter “Model”:
 - ✓Possibility to have one, two or several identical models.
 - ✓If forgotten during the settings is shown the message “Configuration Error”.

7.12.2 Loads, Groups and Panel boards configuration

Optional setup, used to give a description of the electrical installation by panel board(s), load(s) and group(s)



1. Click "Loads, groups and panel boards"

Loads, groups and panel boards settings page appears.



2. Click "Panel boards", "Loads" or "Measure Groups" to create a panel board, a load or a measure group.

Every page is divided into two sections:

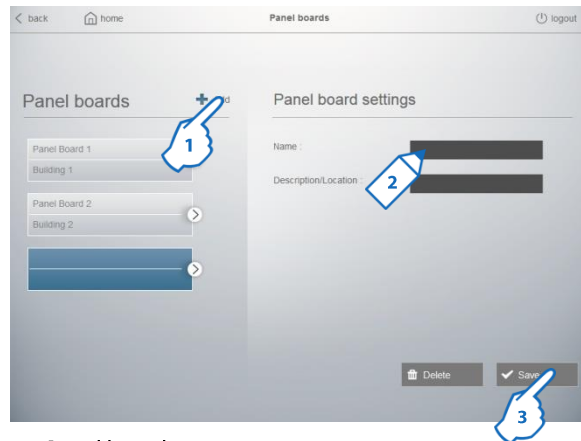
- left section is the "Added Panel boards / Loads / Measure groups" area.
- right section shows the "Panel boards / Loads / Measure groups" settings area, where the configuration fields are available.

7.12.2.1 Panel boards

• CREATING AND SAVING PANEL BOARD

For a physical distribution of the different panel boards of the installation.

Recommended architecture: only one Gateway per Panel board



To create a Panel board:

1. Click "Add"
2. Assign the panel board parameters:
Name (required parameter)
Description/Location (optional parameter)
3. Click "Save"

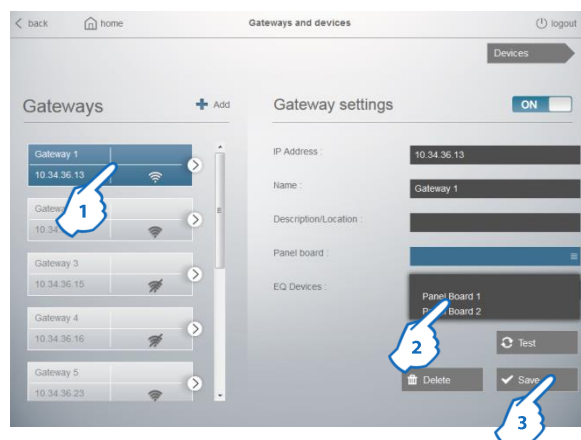
Repeat the operations 1. to 3. to add more panel boards

• ASSIGNMENT OF PANEL BOARDS

Return to the section "Gateways and Devices" in "System configuration".

In the Gateway settings area of the Gateways page, is possible to assign each gateway previously created, to a Panel board.

Note: a gateway can be assigned to only one panel board.



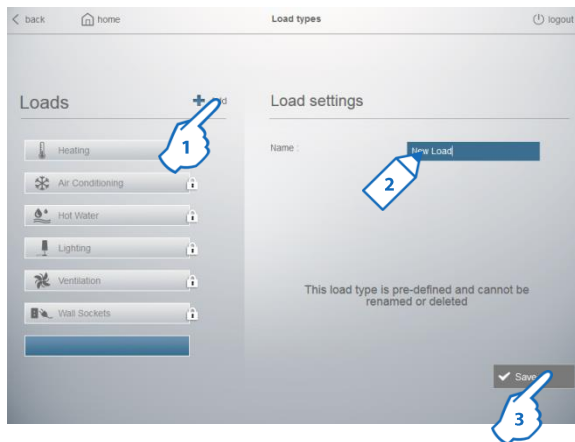
1. Choose a Gateway
2. Choose a Panel board from the Panel boards list
3. Click "Save"

7.12.2.2 Loads

• CREATING AND SAVING LOADS

are available:

- 6 “pre-defined” categories (heating, air conditioning, etc.)
- Category “Others” to display the measurement without Load assigned
- 8 additional categories, user-creatable



To create a Load:

1. Click “Add”
2. Assign the load parameter:
Name (required parameter)
3. Click “Save”

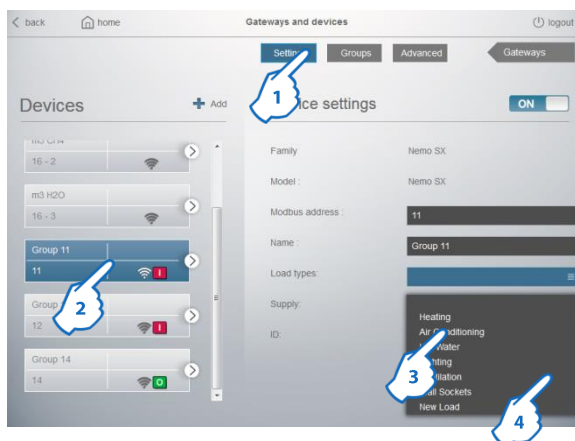
Repeat the operations 1. to 3. to add more loads

Note: it is possible to have a maximum of 14 loads.

• ASSIGNMENT OF LOADS

Return to the section “Gateways and Devices” in “System configuration”.

In the Device settings area of the Devices page, is possible to assign a Load to each virtual or physical Device previously created.

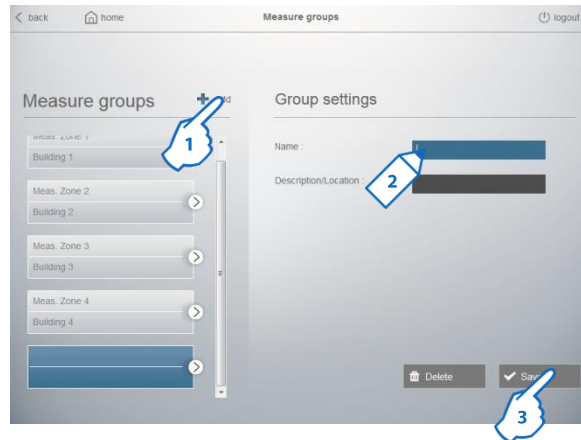


1. Click “Settings”
2. Choose a Device
3. Choose a Load from the Loads list
4. Click “Save”

7.12.2.3 Measure groups

• CREATING AND SAVING MEASURE GROUPS

For a logical distribution of the measuring points of the installation



To create a Measure group:

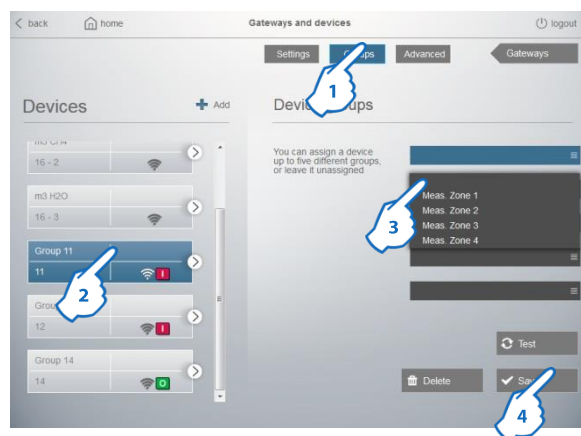
1. Click "Add"
2. Assign the measure groups parameters:
Name (required parameter)
Description/Location (optional parameter)
3. Click "Save"

Repeat the operations 1. to 3. to add more groups

• ASSIGNMENT OF MEASURE GROUPS

Return to the section "Gateways and Devices" in "System configuration".

In the Device settings area of the Devices page, is possible to assign a Measure group to each virtual or physical Device previously created.



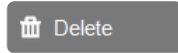
1. Click "Groups"
2. Choose a Device
3. Choose a Measure group from the Measure groups list
4. Click "Save"

Repeat the operations 2. to 4. to assign a device to another group

Note: a device can be associated with several groups simultaneously (up to 5).

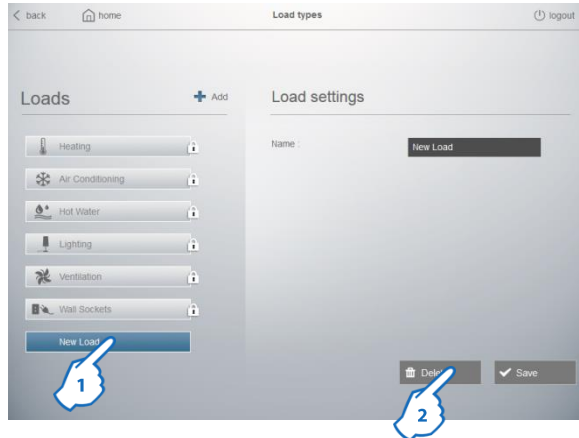
7.12.2.4 System functions

– DELETE Button



Allows to disable / erase a Panel board, a Load or a Measure group.

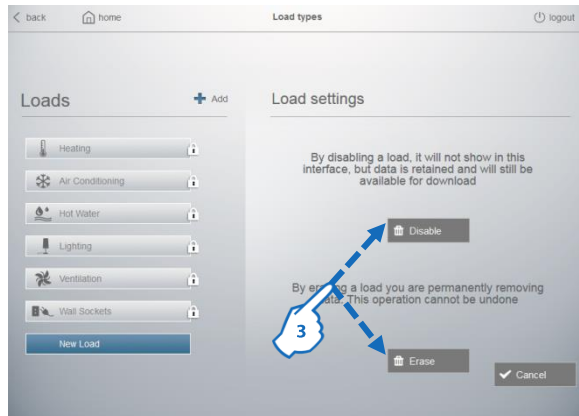
Note: For the “pre-defined” loads the disabling is the only function permitted.



In the Panel boards / Loads / Measure groups settings area:

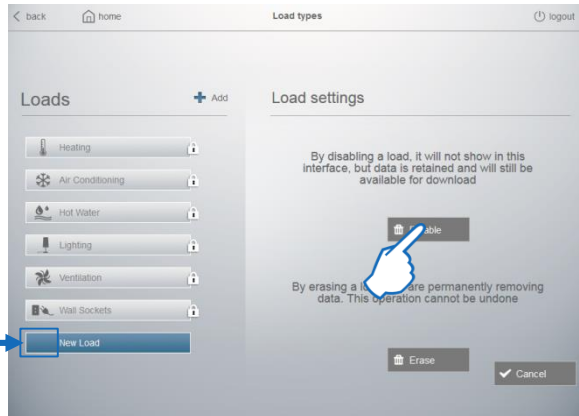
1. Choose a Panel board / Load / Measure group
2. Click “Delete”

An intermediate page in which, the deactivation (Disable) or the erasing (Erase) of the selected Panel board / Load / Measure group is proposed.

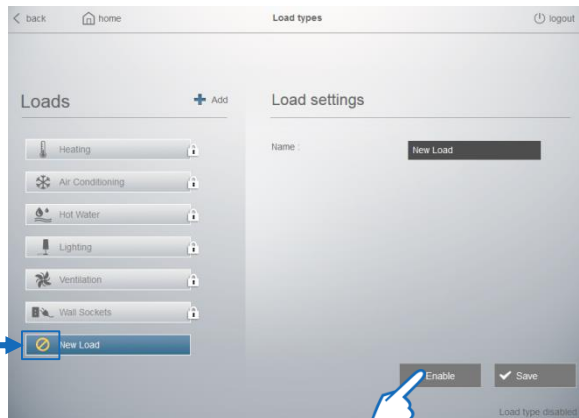


3. Click “Disable” to deactivate the Panel board / Load / Measure group or “Erase” to remove definitively the Panel board / Load (possible only for the “user-creatable” loads) / Measure group.

By clicking on “Disable” the selected Panel board / Load / Measure group, goes into “Deactivated” state.



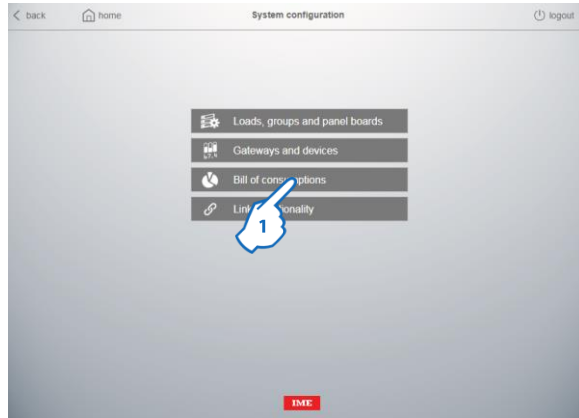
This state is indicated by the symbol  near the Panel board / Load / Measure group's name.



To enable a Panel board / Load / Measure group, simply click “Enable”.

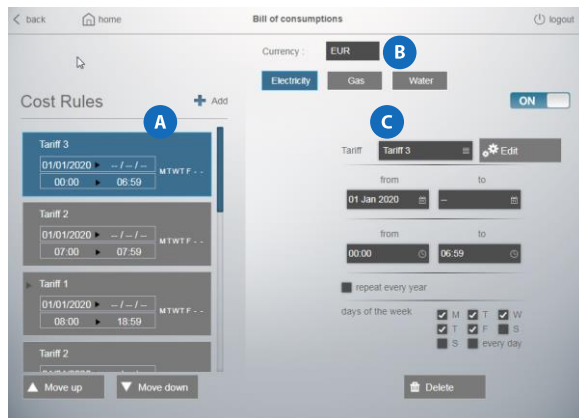
7.12.3 Bill of Consumptions configuration

This optional setting, based on Cost Rules, allows the economic accounting of Electricity, Water and Gas consumptions



1. Click "Bill of consumptions"

Bill of Consumptions setting page appears



The page is divided into three sections:

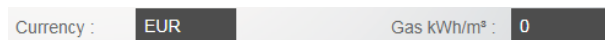
section **A** shows the Cost Rules created by the users.

Note: in a new factory web server or in an updated web server where no tariffs was configured, this area is empty.

If, on the other hand, Electricity, Gas or Water tariffs were already configured before the updating of an installed web server, they are here displayed in a Rule with the wording "DEFAULT"

section **B** is the area where it is possible to assign:

- Currency using the three-letter alphabetical code according to ISO 4217 standard (e.g. EUR, USD, GBP, ...)
- Conversion factor (kWh/m³) to display Gas consumptions also in "Equivalent kWh". This parameter appears only when Gas page is selected



Note: Conversion factor should be provided by your Gas supplier; contact it to get the conversion rate

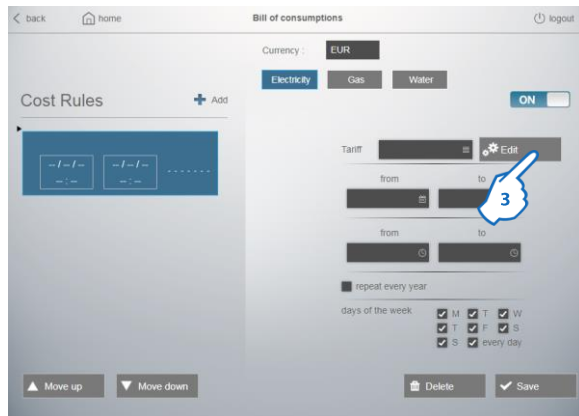
section **C** shows configuration parameters for the selected/new Cost Rule

7.12.3.1 Creating and Saving Tariffs and new Cost Rules

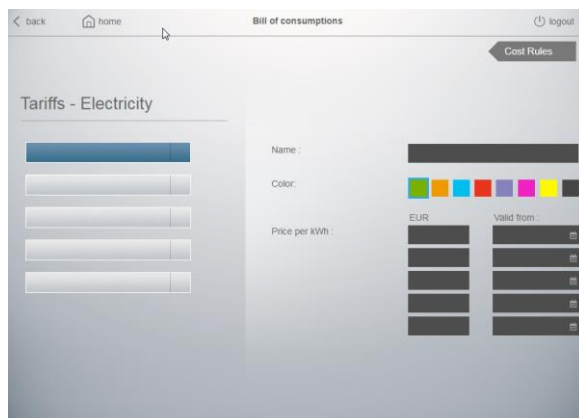


1. Select Electricity, Gas or Water
2. Click "Add"

Section with configuration parameters appears



3. Clicking on "Edit" button, the page where it is possible to create Tariffs to be assigned to Cost Rules is displayed.



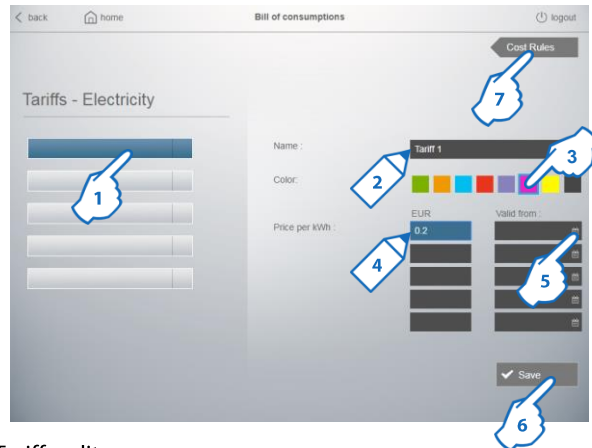
For each type of load (*Electricity, Gas, Water*) it is possible to create up to 5 tariffs with a different display colour and up to 5 different cost values can be assigned for each tariff, specifying the validity date.

• Procedure to create Tariffs

Each Tariff is defined by assigning the following parameters (*some are mandatory while others are optional*):

- the Name
- the Colour by which the tariff will be identified in histograms and charts
- one or more Prices
- validity Date for each price

- To create a Tariff



In the Tariffs edit page:

1. Select a Tariff button

Assign Tariff parameters:

2. the Name

3. the Colour

4. Price per kWh of Electricity or per m³ of Gas/Water

5. the Date from which the set price is valid

Note: if only one price is assigned to a tariff it is not necessary to set a validity date. If not, a validity date must be associated to each price entered; Web server automatically will assign correct price to tariff according the date set in this page.

6. Click "Save"

Repeat the operations 1. to 6. to add more tariffs

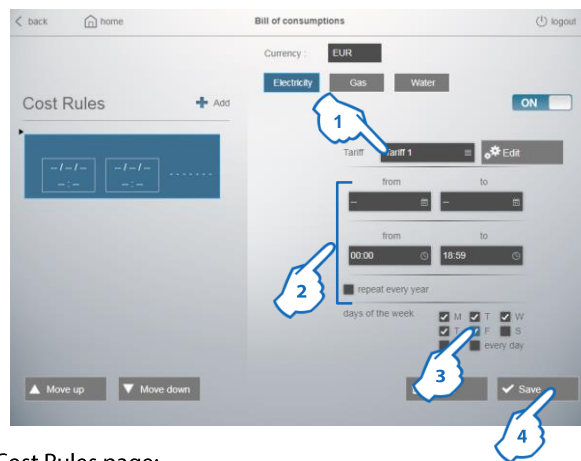
7. Click "Cost Rules" to return to the previous page

• Procedure to create Cost Rules

Each cost rule is defined by assigning the following parameters (*some are mandatory while others are optional*):

- a Tariff among those previously created
- a specific validity date or validity period
- a time frame where the rule is true
- a checkbox useful to define rules that are repeated every year on the same day or period (e.g. Christmas, New Year's Day, etc...) and which constitute an exception in standard programming
- several checkboxes to define for which days of the week the rule is true (is possible to check one or more specific days or "every days")

- To create a Cost rule



In the Cost Rules page:

1. Select one of the Tariff previously created
2. Define:
 - a specific validity date or period (If necessary)
 - a time frame where the rule is true

Note: flagging "repeat every year" checkbox, you can define that the rule being created is valid every year for the date or period indicated
3. Select the days of the week when the rule is valid
4. Click "Save"

Repeat the operations 1. to 4. to add more rules

Notes:

- active rule is highlighted by the symbol ► flashing to the left of the name of the associated tariff



- it is always possible to add or edit a Tariff by selecting any of the rules created and pressing the "Edit" button

Example 1: Rule with Tariff 1, valid all year round from 00:00 to 18:59, from Monday to Friday



Example 2: Rule with Tariff 2, valid all year round from 19:00 to 23:59, from Monday to Friday



Example 3: Exception for Christmas day with Tariff 2, valid every year, all day whatever the day of the week



Example 4: Exception for the month of March 2020; the rule created provides Tariff 3 all day any day of the week



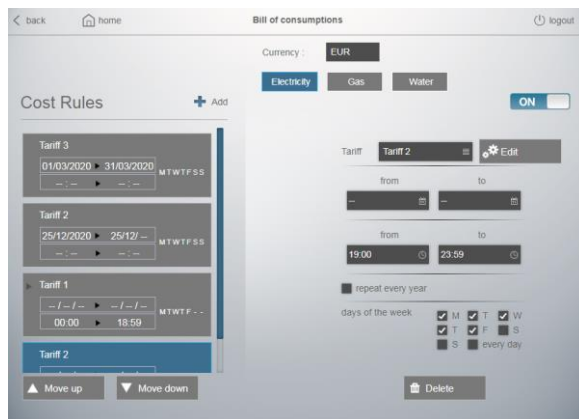
IMPORTANT: the operating logic of the cost rules is based on a “true” or “false” criteria of the rules.

The web server analyzes the rules created by the user starting from the top down. Once a true rule has been identified, the server stops the analysis until the end of the period defined in the true rule.

For this reason it is necessary to arrange the created rules and move them using the “Move up” and “Move down” buttons placing the Exceptions always in the first positions in the rules list.

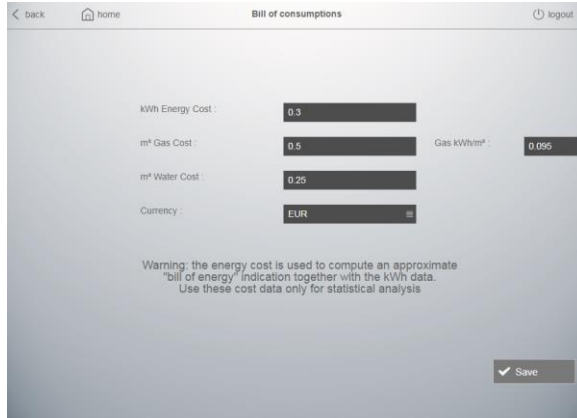
Using Rules of the example 4, correct order is (see image below):

- 1st: Rule related to March 2020 with Tariff 3
- 2nd: Rule related to Christmas day with Tariff 2
- 3rd: Rule from 00:00 to 18:59 with Tariff 1
- 4th: Rule from 19:00 to 23:59 with Tariff 2

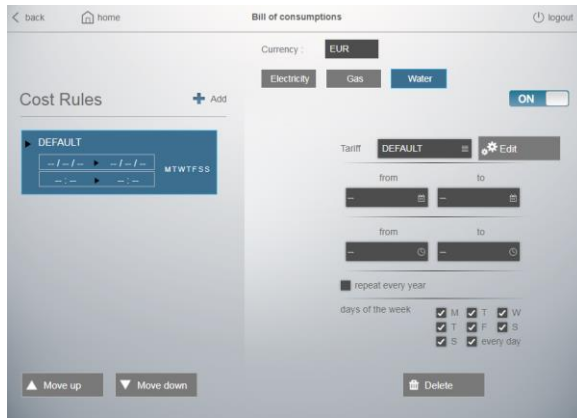


• **Consumptions costs set and assigned with previous versions**

As previously said, updating a web server in which Electricity, Gas or Water consumption costs were already set (see image below as example), in the new “Bill of consumptions” page these are displayed as an always valid Rule (one for each load type) with which the tariff called “DEFAULT” is associated.



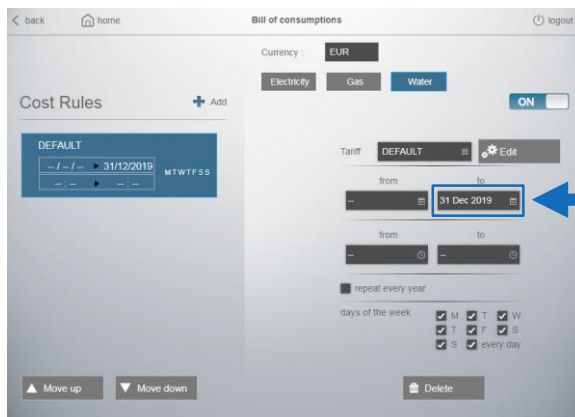
Bill of consumptions page up to 3.7.1 version, with consumption costs set



Bill of consumptions page from 3.8.1 version, with Rule associated to “Default” tariff

If you don’t want to create new Tariffs or Cost Rules, you can keep this configuration with which web server continue the economic accounting of Electricity, Water and Gas consumptions as before.

Otherwise, **before creating new Tariffs and Rules**, we suggest to you to edit “Default” Rule fixing an end validity date (e.g. the end of the month preceding the month in which the web server was updated)



7.12.4 Configuration of the data sample rate

Optional setting, allows to edit the recording time of Electricity data including statistical data (if available in the devices), of Water and of Gas in the Web Server database..

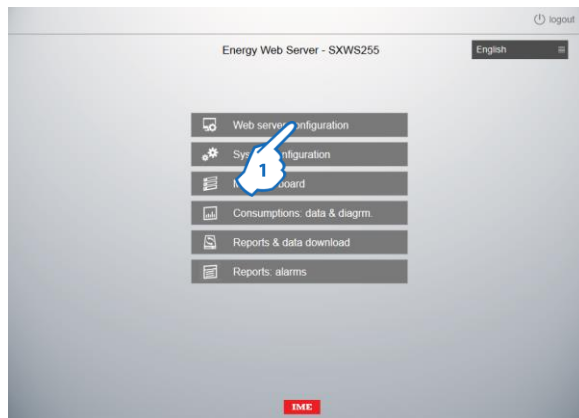
Note: default value: 15 minutes

Parameter "Sample rate" affects :

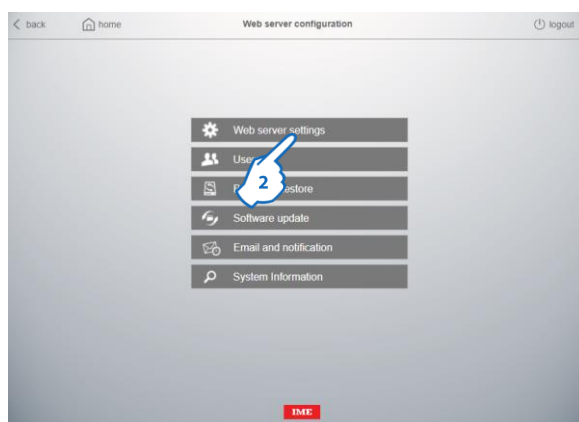
- histograms updating in the consumptions display pages
- Recording of consumptions data in the database
- recording of the statistical values (average values, minimum, maximum, ...) for measuring devices which have these values
- "CSV" files saved in the FTP space of the web server
- "CSV" files downloaded with the "Data download" function

Procedure to edit the setting:

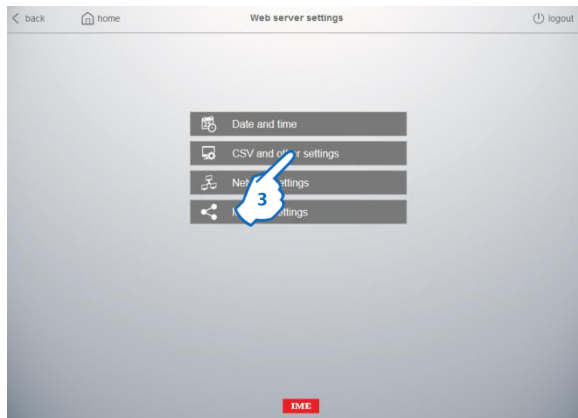
In the Web Server's home page



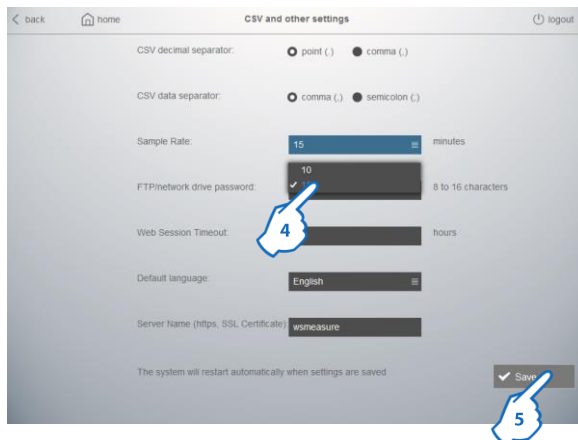
1. Click "Web Server configuration"



2. Click "Web server settings"



3. Click "CSV and other settings"



4. Select the "Sample rate" value.

5. Click "Save".

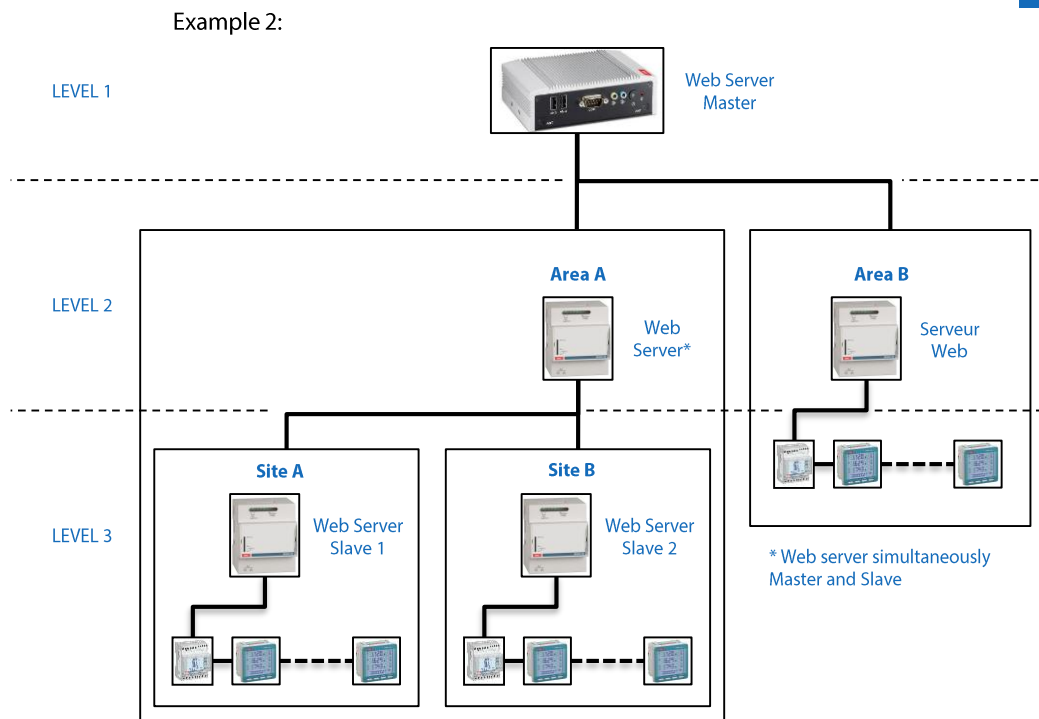
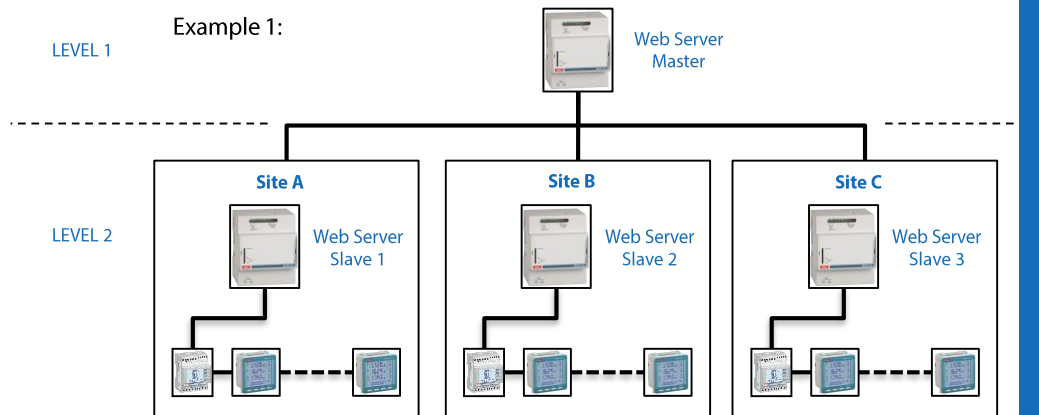
Note: Editing of this setting does not affect data already saved by the Web Server before changing the value.

7.12.5 Master/Slave function

This function allows you to use a web server as “Master” of one or more “Slave” web servers in order to let the “Master” acquire consumption data recorded by the “Slaves”.

The function allows you to manage, for example:

- installations with multiple levels
- systems with more than 255 measuring points



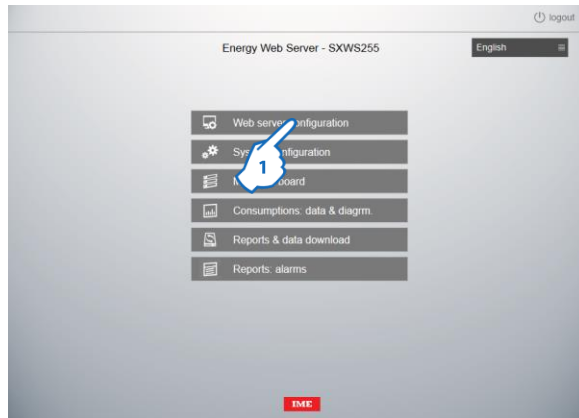
The data that can be acquired from the “Master” web server are the following:

- Positive active Energy of a specific Device
- Positive active energy of a specific Load
- Positive active energy of a specific Measure group
- Total Positive active energy of all Electrical Loads

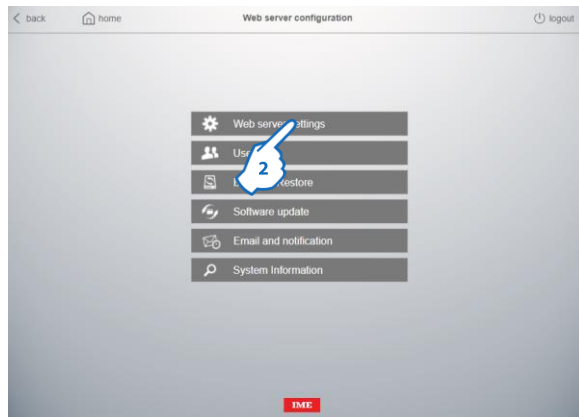
7.12.5.1 Activation of the Function

This configuration is to be performed only on Slave Web Server(s) and is used to give the Master permission to access the data registered by the Slave(s).

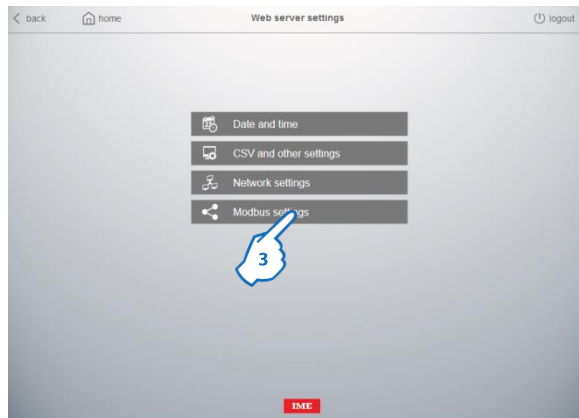
Procedure to activate the function on the Slave Web Server(s):
In the Web Server's Home page



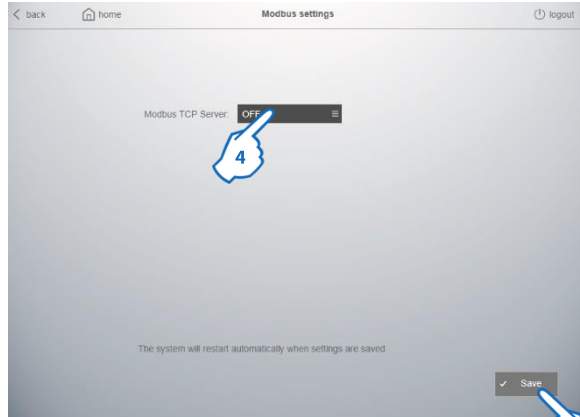
1. Click "Web Server configuration"



2. Click "Web server settings"



3. Click "Modbus settings"



4. Click to Enable (“ON”) the Modbus TCP Server used for Master/Slave function

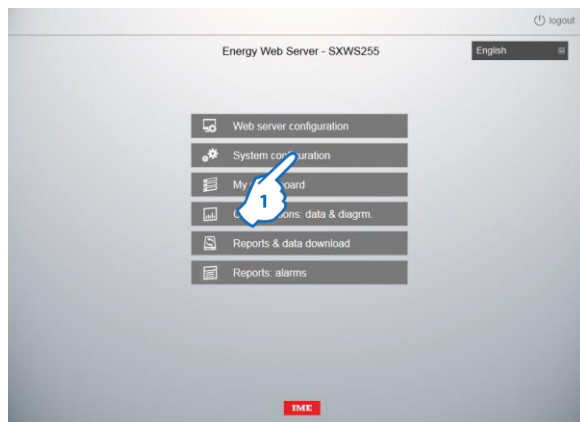
5. Click “Save” **2 times** to confirm

Note: System will restart automatically when settings are saved

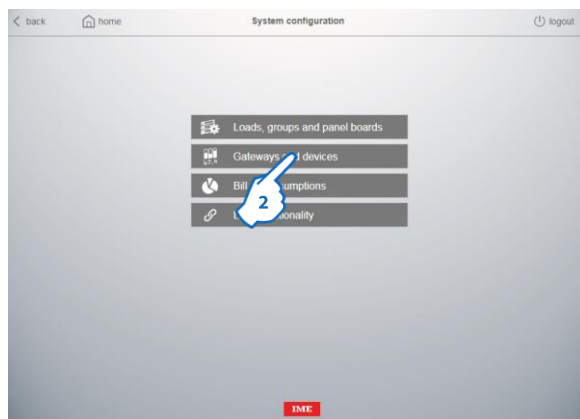
7.12.5.2 Creating and Saving of “Virtual” Gateways and Devices

Procedure for creating and saving “Virtual” Gateways and Devices is the same used for physical Gateways and Devices.

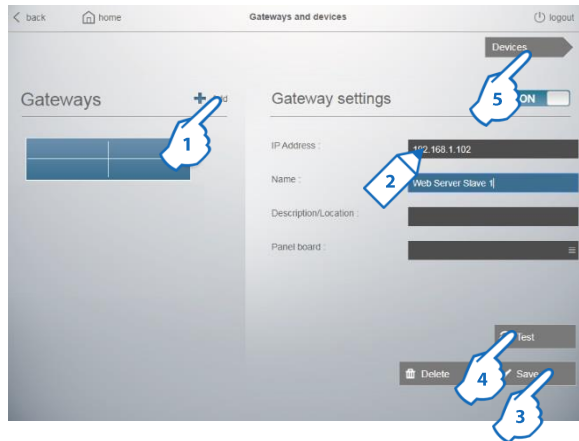
In the Web Server’s Home page



1. Click “System configuration”



2. Click “Gateways and devices”



1. Click "Add"
2. Assign the parameters to the Virtual gateway = Slave Web server:
 - IP Address of the Slave Web Server (required parameter)
 - Name (required parameter)
 - Description/Location (optional parameter)
3. Click "Save"
4. Click "Test" to verify the correct operation of the communication between the Web Server and the Gateway
5. Click "Devices" to configure the devices connected to the Slave Web server
Device's settings page appears



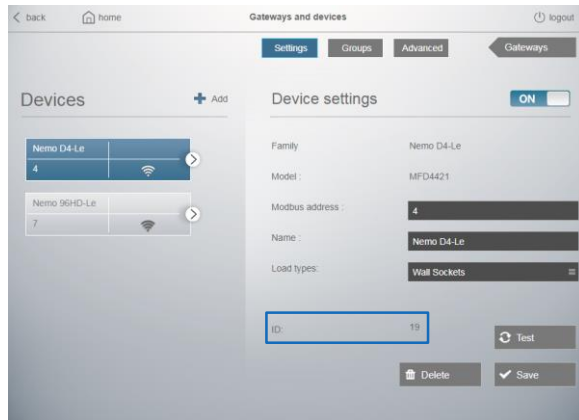
1. Click "Add"
2. Choose the family "WSMEASURE" from the families list
3. Choose the Model from the models list
4. Assign the Device parameters:
 - Name (required parameter)
 - Load type (optional parameter)
- Note:** Modbus Address is automatically filled
5. Enter the specific "Remote ID" of a Device, Load or Measure Group configured in the Slave Web server or 6. Click on "All" to return Total Active Energy of all Electrical Loads of the slave web server (the "Remote ID" field will be filled automatically)
7. Click "Save"
8. Click "Test" to verify the correct operation of the communication between the Device and the Gateway

- **Details for the “Remote ID” parameter**

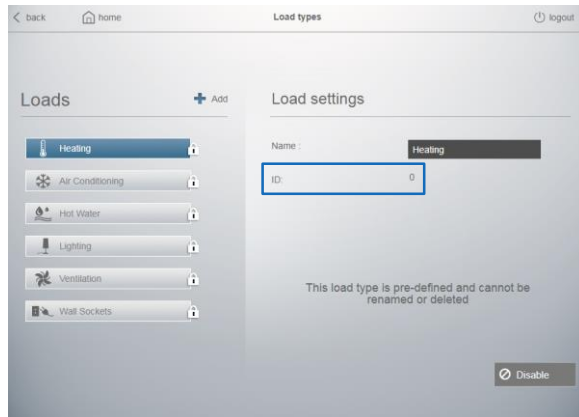
The “Remote ID” is the ID number of a Device, Load or Measure Group in the slave web server database.

This unique number is assigned to a Device, Load or Measure Group during the system configuration and it is shown:

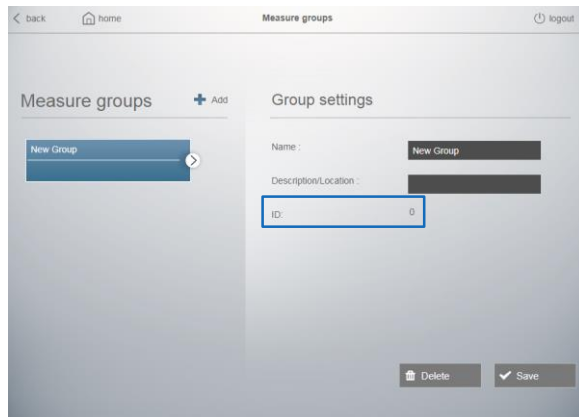
- in the “Gateway and devices” page for Devices (see image below)



- in the “Load types” page for preconfigured or user-created Loads (see image below)






- in the “Measure groups” page for Measure Groups (see image below)



- Description of the device selection button



1. Modbus Address (*fixed value equal to 247*) - Indication of the virtual device type:
247 - 1XXXX = Positive active energy of the Device with ID = XXXX
247 - 2YYYY = Positive active energy of the Load with ID = YYYY
247 - 3ZZZZ = Positive active energy of the Measure Group with ID = ZZZZ
247 - 29999 = Total Positive active energy of all Electrical Loads
2. Name of the device
3. Device status
 -  On
 -  Off
 -  Communication error

8. Use

8.1 Access

The access to the Web Server data is protected by identification codes (PIN and PUK codes).

Four types of "default" users are configured:

- "administrator"
- "greenUp"
- "installer"
- "user"

The home page ("home") will be different depending on the type of user that access to the device.

8.1.1 Access right

- "administrator"

Access to the pages:

- Web Server configuration
- System configuration
- My panel board (display of all measuring/metering devices)
- Consumption: data & diagraph.
- Reports & Data download
- Reports: alarms

Default access PIN code:

- 99999 (5 characters)

Default access PUK code:

- 00000 9999 00000 (14 characters)

- "installer"

Access to the pages:

- System configuration
- My panel board (display of all measuring/metering devices)
- Consumption: data & diagraph.
- Reports: alarms

Default access PIN code:

- 55555 (5 characters)

Default access PUK code:

- 00000 5555 00000 (14 characters)

- "user"

Limited access to display pages of data (not configurations possible in mode "user");

- Consumption: data & diagraph.
- Reports: alarms

Default access PIN code:

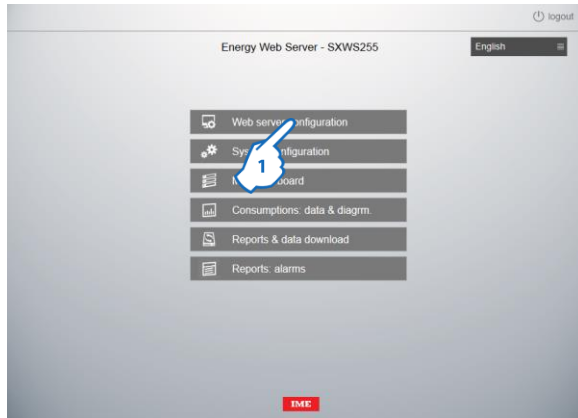
- 11111 (5 characters)

Default access PUK code:

- 00000 1111 00000 (14 characters)

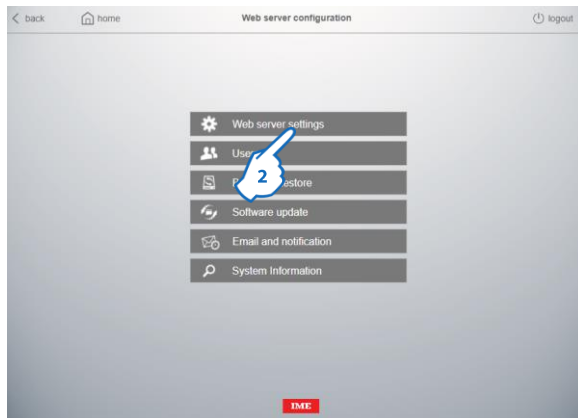
8.1.2 Creating a new User

Only the user “**administrator**” can add new users.



1. Click “Web Server configuration”

Web Server configuration’s page appears



2. Click “Users”

Users configuration page appears



3. Click "Add".
4. Assign a name to the new user.
- 5.- 6. Type the PIN and PUK codes for the new user.
7. Choose which pages the new user can see.
8. Click "Save"

8.1.3 Changing of the access rights


The access rights of a user can be modified only by the user "administrator"

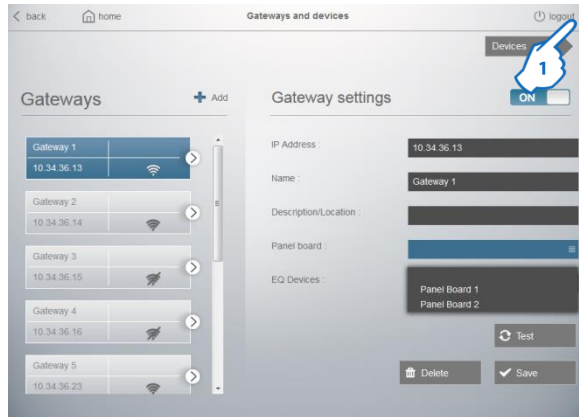


In the Users configuration page

1. Choose from the list a "name of a user" (ex. installer) to edit it.
- 2.- 3. Type the PIN and PUK codes for the user to edit.
4. This option allow to disable a user without erase it once the "Save" button is clicked.
5. Choose, for the user to edit, which pages it can see.
6. Click "Save".

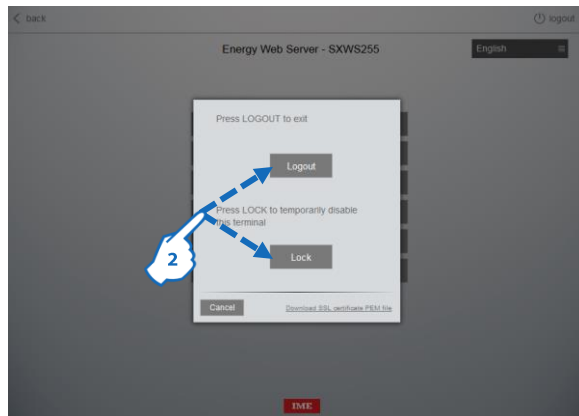
8.1.4 Logout procedure

The symbol  logout appears on all pages of the web server.



1. Click "logout"

A confirmation page appears.



2. Click "Logout" or "Lock" to confirm the exit from the web server.

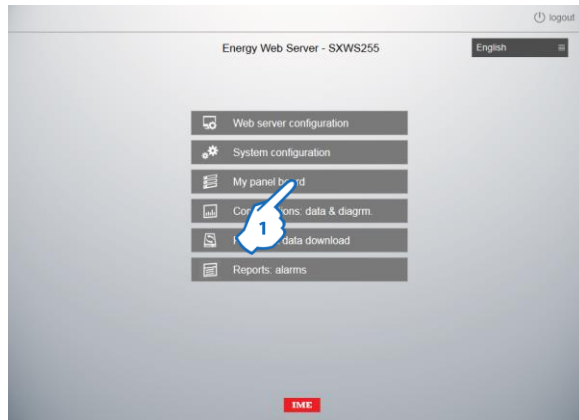
Note:

Logout → closing the session, reconnection with the PIN code

Lock → temporary disabling of the application, reconnection with the codes PIN+PUK

8.2 Data display pages

8.2.1 My panel board



In the Home Page

1. Click “My panel board”

Devices page appears



The page is divided into three sections:

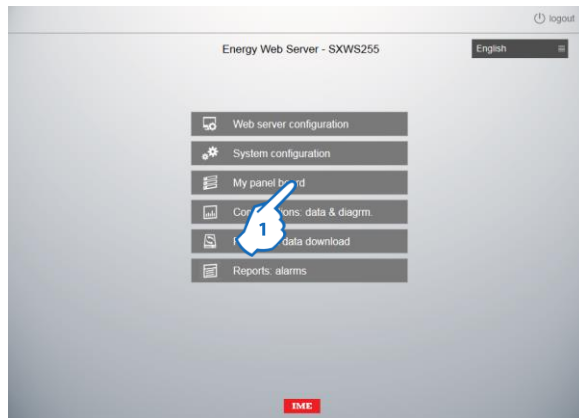
section **A** shows the devices added by the users with their characteristics and status icons. It is possible to choose a device per Gateway , Panel board or "All Devices"

section **B** is the area where is possible to select two pages:

- Measure: display of the quantities measured by a device:
 - Electricity measuring devices: Energy, Power, Voltages / Currents / Frequency, THD (if available on the Device) and Harmonics (if available on the Device)
- State/Com.: page dedicate to NEMO SX devices; display of devices status, control buttons... for each NEMO SX device/group of devices

section **C** shows the values measured by the selected device, status icons and command buttons (if available).

For Power Factor Controllers of ALPTEC range, “My panel board” page is structured as follows:



In the Home Page

1. Click “My panel board”

Devices page appears



The page is divided into three sections:

section **A** shows the devices added by the users with their characteristics and status icons. It is possible to choose a device per Gateway , Panel board or “All Devices”

section **B** is the area where it is possible to select two pages:

- Measure: display of parameters and electrical quantities measured by the Power Factor Controller:

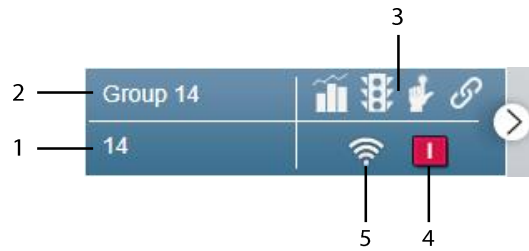
- Steps: State (**O**: Step not inserted, **I**: Step inserted), Residual power (in % for APLTEC3.2/5.2/8.2 and in kvar for ALPTEC8), Number of insertions and Insertion time for each step; indication of the Global state of Steps (OK or Default), AUTO/MAN control button used to show the state of the power factor controller and to switch the device between two operating modes

- Others quantities: Power, Power Factor, Voltages/Currents/Temperature, THD and Harmonics

- State/Com.: display of residual time to maintenance (for APLTEC3.2/5.2/8.2) and possibility to reset this time

section **C** shows the values measured by the selected power factor controller

• **Description of the device selection button**



1. **Modbus Address** (Modbus Address - Position for counters with pulse output or Modbus Address - Indication of the virtual device type for the Master/Slave function)

2. **Name of the device**

3. **Symbols of the functions associated to the Device**

 Measure

 State

 Command

 Link Functionality

4. This symbol appears only if the Device integrates the state function related to a protection device and shows the circuit-breaker state:

 Open

 Closed

 Tripped

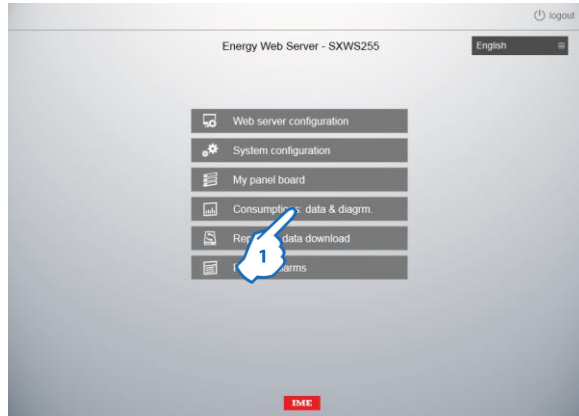
5. **Device status**

 On

 Off

 Communication error

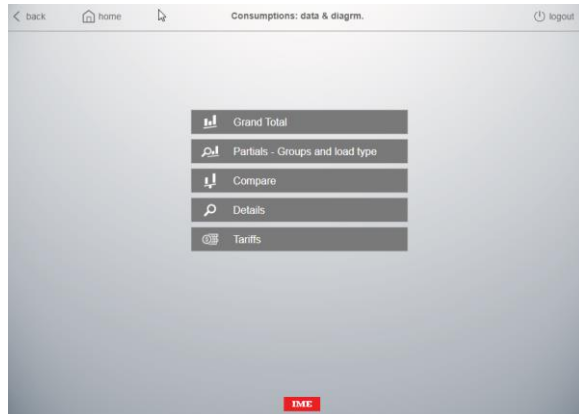
8.2.2 Consumptions: data & diagr.



In the Home Page

1. Click "Consumptions: data & diagr."

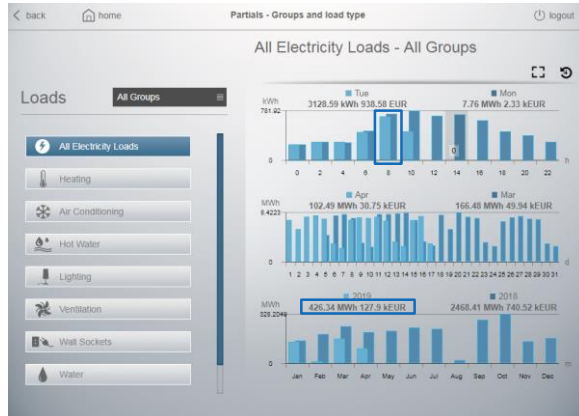
Consumptions page appears



Are available 5 ways of displaying data:

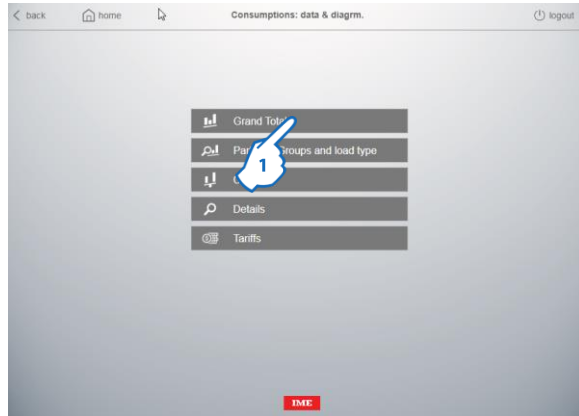
- **Grand Total** (Consumption of the entire installation)
- **Partials** (Consumptions per Load and/or Measure group)
- **Compare** (Comparison of the Global Consumptions between two Devices)
- **Details** (Consumptions of a single Device)
- **Tariffs** (Display of the Cost of Consumptions according to configured Tariffs)

For each page are available:



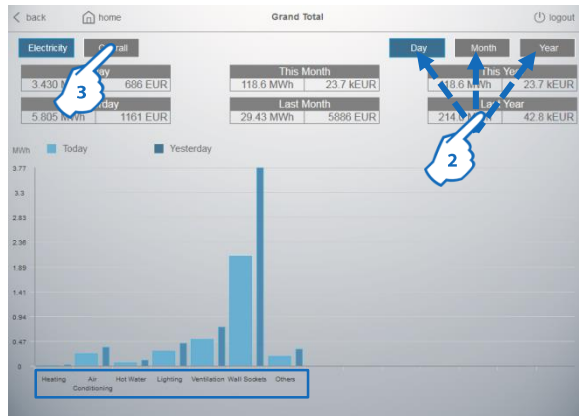
- Histograms of Consumptions divided per:
 - Day (per hour)
 - Month (per day)
 - Year (per month)
- Comparison between the actual and the previous value (ex. today/yesterday, etc.)
- Values in:
 - Wh (and multiples of Wh), dm^3 (and multiples of dm^3) of water, dm^3 (and multiples of dm^3) of gas and "Wh (and multiples of Wh equivalent)" of gas.
 - Note: displayed values (resolution, decimal values, etc.) depend only on the quantities read by the measuring instruments.**
 - EUR (or other configured currency)

8.2.2.1 Grand Total



1. Click "Grand total"

Grand total page appears



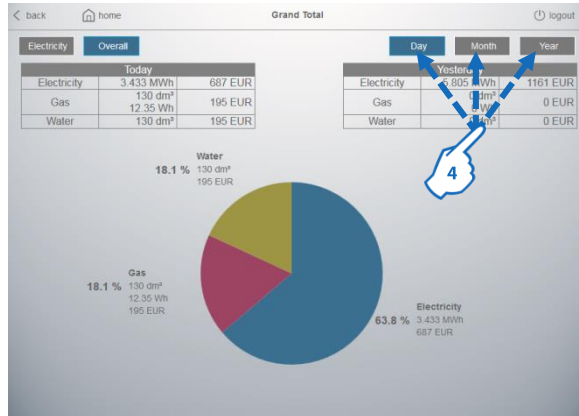
Visualization of Total Energy Consumptions (Ea +) on histograms divided per Load

2. Click "Day", "Month" or "Year" to view the consumptions on a different time period (Day (hours) / Month (days) / Year (months))

3. Click "Overall" to display the page of the Overall Consumptions (Electricity, Gas and Water) of the system.

Note: in this visualization, consumption data for "virtual" devices not excluded from Total are also taken into account.

Overall consumptions page appears



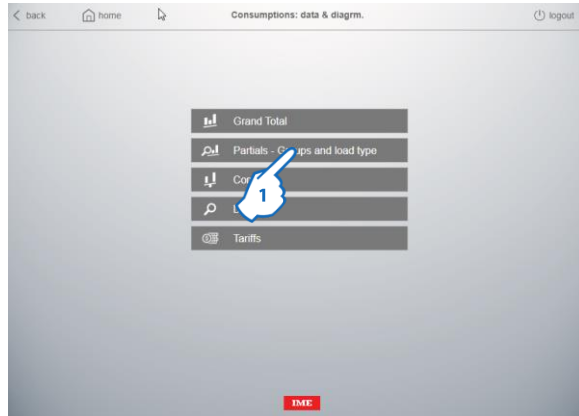
Visualization of the Overall Consumptions of the system on tables and on a pie chart showing:

- consumptions subdivided per type:
 - Electricity (blue area)
 - Gas (violet area)
 - Water (yellow area)
- consumptions valued according to the measurement unit and the configured currency

4. Click "Day", "Month" or "Year" to view the consumptions on a different time period (Day (hours) / Month (days) / Year (months))

Note: in this visualization, consumption data for "virtual" devices not excluded from Total are also taken into account.

8.2.2.2 Partials - Groups and load type



1. Click "Partials - Groups and loads"

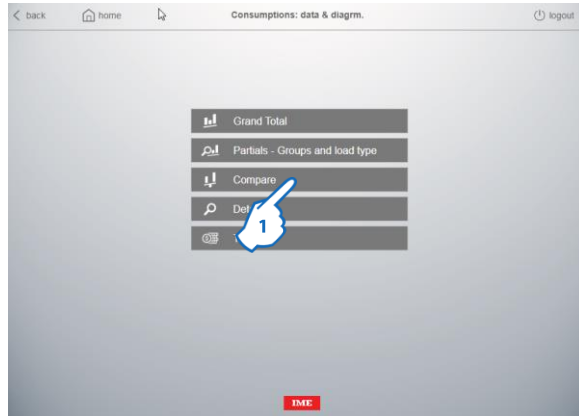


Visualization of Partials Consumptions on histograms per Day / Month / Year

2. Click to view the consumption of a specific Measure group or of "all groups"
3. Click to view the consumption of a specific Load (ex. Ventilation, Water, Gas, ...) or of "All electricity loads"

Note: in this visualization, consumption data of "virtual" devices according to the Loads and/or the assigned Measure Groups are also taken into account.

8.2.2.3 Compare



1. Click "Compare"



Comparison of the Consumptions between two Devices.

2. Click to select the two "physical" or "virtual" Devices to compare

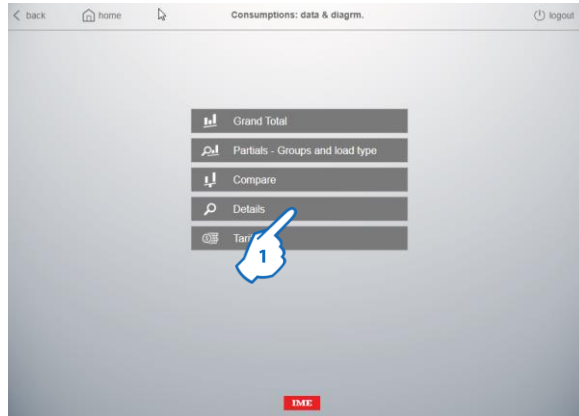
Note: Selecting two non homogeneous Devices (ex Electricity and Gas), comparison is evaluated only according to the currency (EUR or other currency) and not according to the measurement units.

It is not possible to compare kWh of energy and "Equivalent kWh of gas.

3. Click "Total" or "Details" to view the Total or Detailed comparison between the two selected Devices

4. Click "Day", "Month" or "Year" to view the consumptions on a different time period (Day (hours) / Month (days) / Year (months))

8.2.2.4 Details



1. Click "Details"



The page is divided into three sections:

section **A** shows the devices added by the users with their characteristics and status icons. It is possible to choose a device per Groups / Loads or "All Devices"

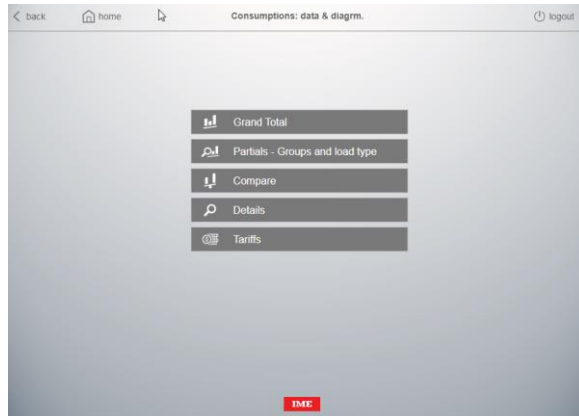
section **B** is the area where is possible to select two pages:

- Measure: display of the quantities measured by a device:
 - Electricity measuring device: Energy, Power, Voltages / Currents / Frequency, THD (if available on the Device) and Harmonics (if available on the Device)
 - Water Counters: Water consumptions
 - Gas Counters: Gas consumptions

State/Com.: page dedicate to NEMO SX devices; display of devices status... for each NEMO SX device/group of devices

section **C** shows the histograms of the consumptions, values measured by the selected device and status icons (if available).

For Power Factor Controllers of ALPTEC range, “Details” page of the “Consumptions: data & diagm.” menu is structured as follows:



1. Click “Details”
Details page appears



The page is divided into three sections:

section **A** shows the devices added by the users with their characteristics and status icons. It is possible to choose a device per Gateway , Panel board or "All Devices"

section **B** is the area where is possible to select two pages:

- Measure: display of parameters and electrical quantities measured by the Power Factor Controller:
 - PF: linear graphs with power factor trend
 - Others quantities: Power, Power Factor, Voltages/Currents/Temperature, THD and Harmonics

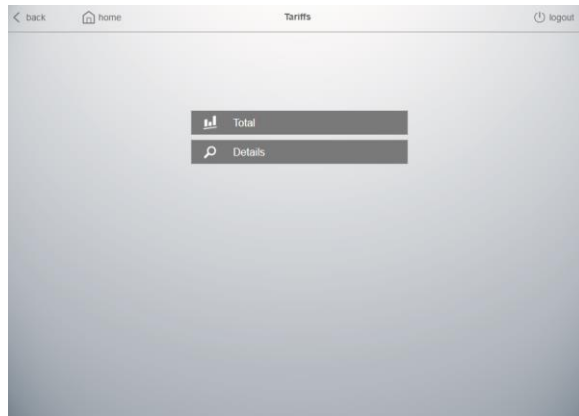
section **C** shows the values measured by the selected power factor controller

8.2.2.5 Tariffs



1. Click "Tariffs"

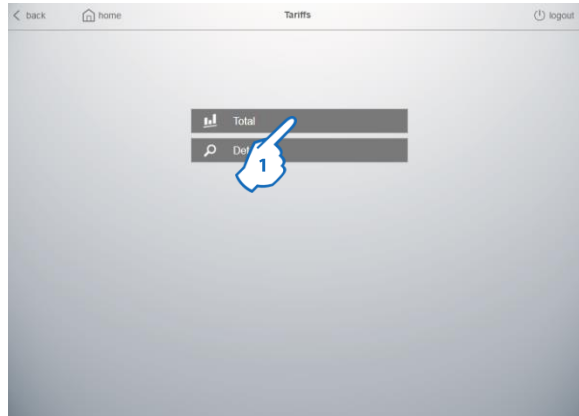
Tariffs page appears



Are available 2 ways of displaying data:

- **Total** (Consumption costs of the entire installation)
- **Details** (Consumptions costs of a single Device)

8.2.2.5.1 Total



1. Click "Total"



Visualization of Total cost of Consumptions in EUR (or other configured currency) on a pie chart showing costs subdivided according to the configured tariffs (in the example 4 tariffs configured and only 3 with data)

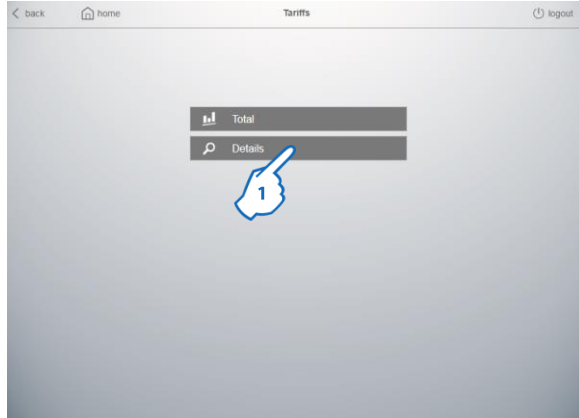


2. Clicking on the drop-down menu it is possible to select or deselect the tariffs to be displayed on the pie chart (the pie chart is automatically updated)

3. Click "Electricity", "Gas" or "Water" to view the costs of this type of load

Note: in this visualization, consumption data for "virtual" devices not excluded from Total are also taken into account.

8.2.2.5.2 Details



1. Click "Details"



The page is divided into two sections:

section **A** shows the devices added by the users with their characteristics and status icons. It is possible to choose a device per Groups / Loads or "All Devices"
section **B** shows the histograms with the Cost of Consumptions in EUR (or other configured currency) subdivided according to the configured tariffs




Clicking on the drop-down menu it is possible to select or deselect the tariffs to be displayed on the histograms (*histograms are automatically updated*).

8.2.2.6 Advanced histograms and charts display

For histograms and pie charts of the menus “Partial – Groups and Load type”, “Details”, “Tariffs-Total” and “Tariffs-Details” an advanced display mode is available.


- Full screen display



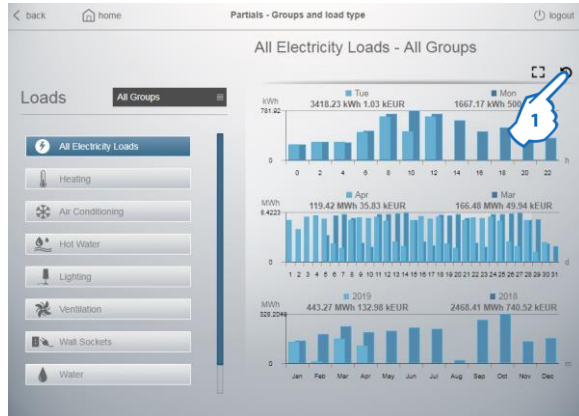
1. Clicking on the button , histograms/charts can be enlarged to full screen. This function can be useful for projecting histograms/charts on screens in public places, processing departments, ... to create an awareness on consumption.


Note: image format and resolution will depend on the screen on which the data will be displayed (see example below for a screen 16:9)



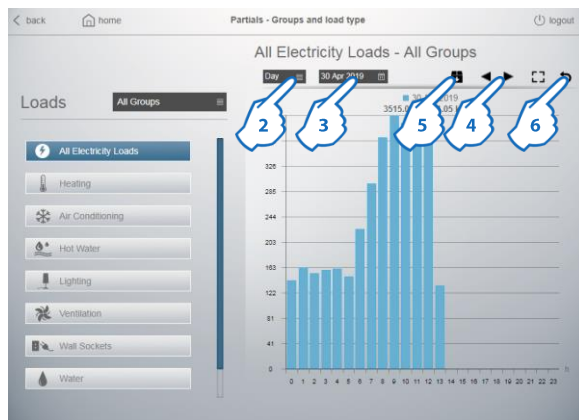
2. To return to the standard format, press the button  at the top right.

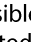
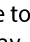
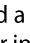
- Detailed view and direct download of data




1. Clicking on the button , it is possible to browse the histograms/charts in detailed mode by:

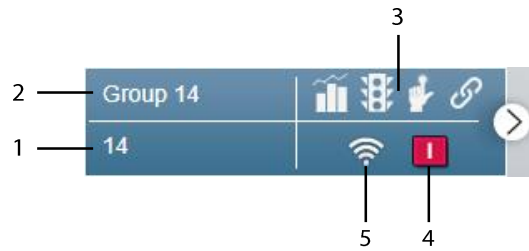
- Day (per hours)
- Month (per days)
- Year (per months)
- 10 years (per years)



2. Click to select the histogram/chart viewing period (Day, Month, Year or 10 years)
3. Click to choose a specific date in the selected period
4. Clicking on two arrows ( or ) it is possible to pass from one to another histogram/chart in the selected period (e.g. today, yesterday, two days ago, ...)
5. Clicking on the button , it is possible to download a ".csv" file named "datalogger.csv" with the data saved by the web server in the selected period
6. Click to return to the standard view

Note: it is still possible to put in full screen this type of histogram by pressing the button .

• **Description of the device selection button**



1. **Modbus Address** (Modbus Address - Position for counters with pulse output or Modbus Address - Indication of the virtual device type for the Master/Slave function)

2. **Name of the device**

3. **Symbols of the functions associated to the Device**

 Measure

 State

 Command

 Link Functionality

4. This symbol appears only if the Device integrates the state function related to a protection device and shows the circuit-breaker state:

 Open

 Closed

 Tripped

5. **Device status**

 On

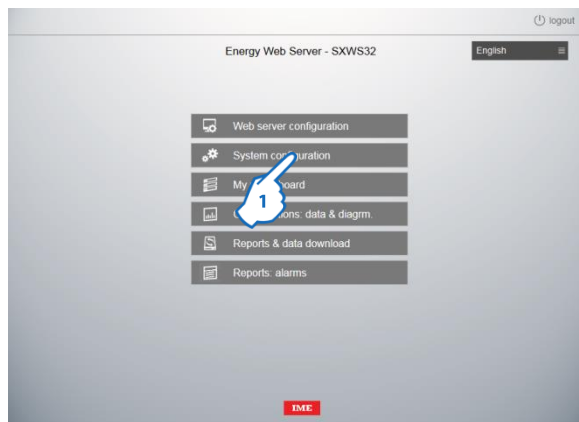
 Off

 Communication error

8.2.3 Link Functionality

This function allows you to link two NEMO SX modules to create automatic actions between a module that generates an event and a module that performs an action as a result of the event; these automations, once programmed, can run independently without a connection to a manager is needed.

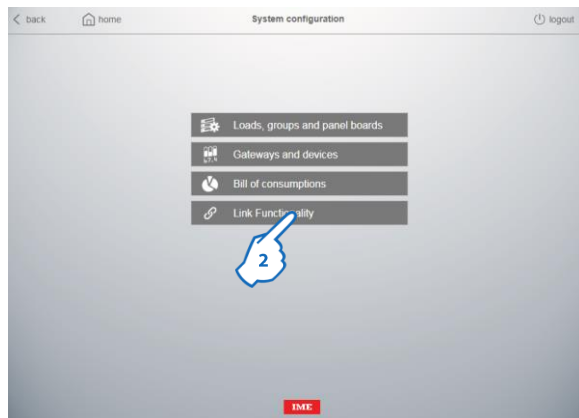
Programming is done using the NEMO SX configuration software. The Web Server can see which links are created between the NEMO SX modules.



In the Web Server's home page

1. Click "System configuration"

System configuration page appears



2. Click "Link Functionality"

Link functionality page appears

In this page are shown the existing links between the NEMO SX modules configured in the Web Server:


- on the left, modules that generate events
- on the right, modules that generate actions in response to the events

Each module is indicated with its name, function, name of the Gateway under which is the NEMO SX module and the Modbus address of the NEMO SX module



In case of an error an alert icon is displayed.

Note: to check and correct errors it is necessary to use the NEMO SX configuration software.

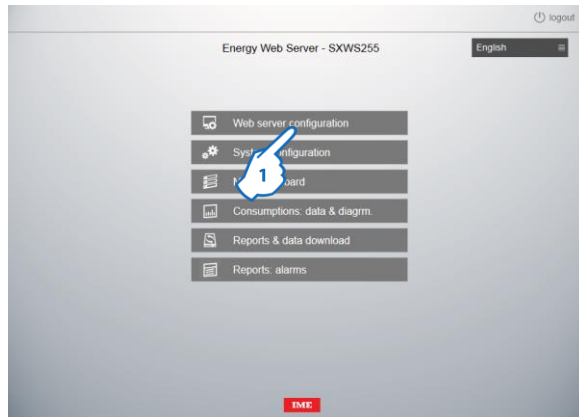
At the same time, the symbol  appears in the device selection button to indicate that there is one or more modules that have been configured as part of a Link

8.3 Historical of consumptions

All the measured quantities are saved automatically in files “.CSV” compatibles with Excel or “csv” reader.

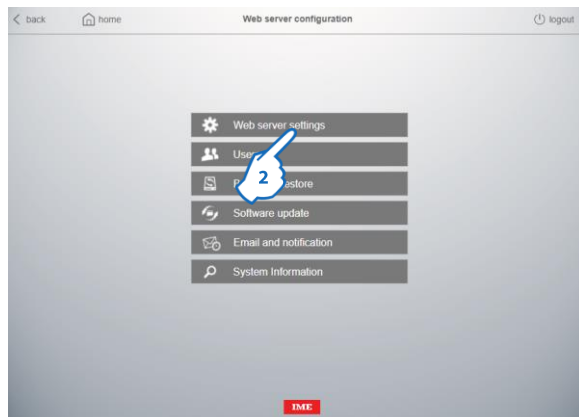
It could be necessary to export these files to manipulate the information; to do this are required some settings in the Web server.

8.3.1 CSV files options

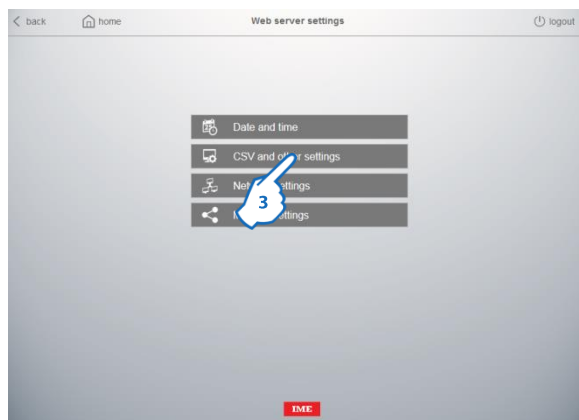


In the Web Server's home page

1. Click “Web Server configuration”



2. Click “Web server settings”



3. Click “CSV and other settings”



4. Click to set the CSV decimal separator: "point" or "comma" (default)
5. Click to set the CSV fields separator: "comma" or "semicolon" (default)
6. It's possible to change the default password (default password: wsmeasure) used to access to the CSV files contained in the HDD of the Web Server. (See § 8.3.2)
7. Click "Save"

Note: The system restart automatically when settings are saved.

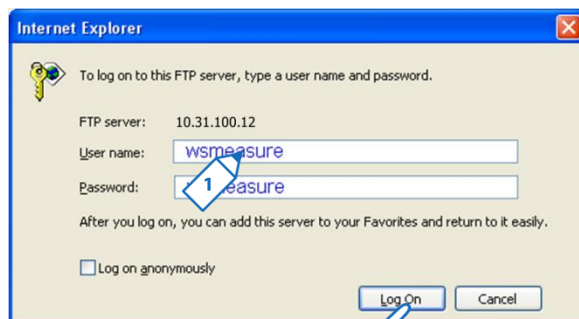
8.3.2 Access to CSV files

Access to CSV files contained in the HDD of the Web Server, it is possible via File Transfer Protocol (FTP):

• ACCESS VIA FTP

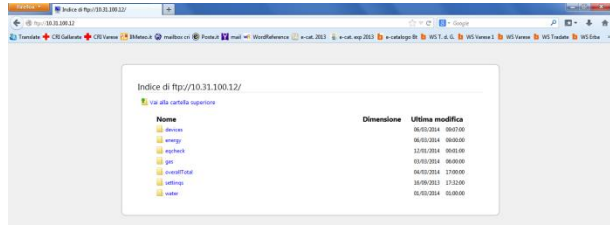
Type the command [FTP:// "Web Server IP Address"](ftp://Web Server IP Address) (ex. [FTP:// 172.168.1.101](ftp://172.168.1.101)) in the Web browser or in the "address area" of a folder; an intermediate page appears.

User name and password are requested:

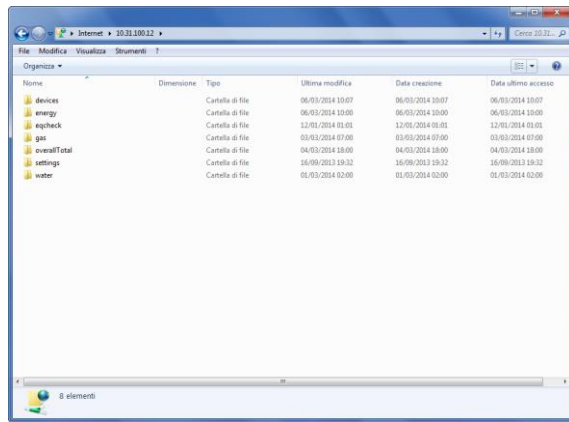


1. Type the requested fields
 - User name: type "wsmeasure" (default user name; not changeable by the user).
 - Password: type "wsmeasure" (default password) or "password modified by the user" (see § 8.3.1)
2. Click "Log On"

Access to the server by web browser allows you to view and/or saving single “CSV” files only.



For the full download of all “CSV” files at once, access to the web server via the “address area” of a folder.










8.3.3 Management of CSV files

CSV files are created automatically according to the settings done by the user in "System Configuration".

Files are saved in the HDD of the Web Server in the following sub-folders:

- "devices": contains the data recorded by each device (multifunction device, energy meter, etc.)
- "energy": contains data related to energy consumption Ea+ (files are recorded per "all devices" / "Loads" / "Groups")
- "eqcheck": contains information on the energy quality (according to EN 50160) read by a device set as "Eq device" in Gateways and Devices (see page 36)
- "gas": contains data related to gas consumption (files are recorded per "Devices" and "Groups")
- "overall Total": contains data related to total consumptions of electricity, gas and water
- "settings": contains files which show the system structure detailed per IP and Modbus addresses, groups, loads, etc.
- water: contains data related to water consumption (files are recorded per "Devices" and "Groups")

 devices	06/03/2014 10:07
 energy	06/03/2014 10:00
 eqcheck	12/01/2014 01:01
 gas	03/03/2014 07:00
 overallTotal	04/03/2014 18:00
 settings	16/09/2013 19:32
 water	01/03/2014 02:00

Notes:

- all consumption values are saved in Wh for Electricity data and dm³ for Water and Gas data
- saved values (resolution, decimal digits, etc.) depend only on the quantities read by the measuring instruments.







8.3.3.1 “devices” folder

It contains a folder for each device set in the system.

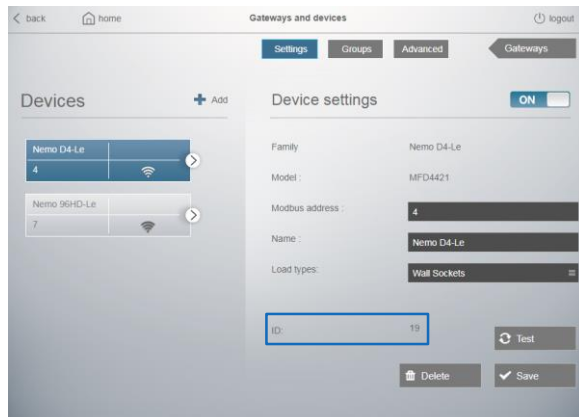
Folder name: “Device ID”

 19

Each device folder contains a series of “.csv” files named
“ID_type of data recorded_sampling period”


 19_energy_2018-01.csv
 19_harmonics_2018-01.csv
 19_stat_2018-01.csv
 19_state_2018-01.csv
 19_statistics_2018-01.csv
 19_thd_2018-01.csv


- ID: (identification number of the “physical” or “virtual” device in the database) is a unique number assigned to the device during the system configuration and it is shown in the Gateway and devices page (see image below)
- type of data recorded: energy, gas, water, statistics, THD, harmonics, etc.
- sampling-period: year-month of recording




8.3.3.2 "energy" folder

It contains a series of ".csv" files with the recording of energy consumptions subdivided per "Devices", "Groups" and "Loads".
Files name "type_sampling period_file version"

 devices_2013-06_3.csv


 groups_2013-06.csv

 loads_2013-06.csv

- type: consumptions distributed per devices, groups or loads
- sampling period: year-month of recording
- file version: increases in case of changes in the system configuration (adding of a Load/Group/etc.)

8.3.3.3 "eqcheck" folder


It contains a file named
"eqcheck_sampling period_file version"


 eqcheck_2013_1.csv

- sampling period: year of recording
- file version: increases in case of changes in the system configuration (changing of EQ device)

8.3.3.4 "gas" folder

It contains a series of ".csv" files with the recording of gas consumptions subdivided per "Devices" and "Groups"
Files name "type_sampling period_file version"

 devices_2013-10_7.csv


 groups_2013-11.csv


- type: consumptions distributed per devices or groups
- sampling period: year-month of recording
- version: increases in case of changes in the system configuration (adding of a Group/etc.)

8.3.3.5 "overall total" folder

It contains a series of ".csv" files with the recording of total consumptions of energy, gas and water

Files name "type_sampling period"


 overallTotalCosts_2014-03.csv


 overallTotalValues_2014-03.csv


- type: consumptions distributed per cost (currency set) or per values (kWh of energy, m³ of gas and m³ of water)
- sampling period: year-month of recording

8.3.3.6 "settings" folder

It contains two files which show the system structure detailed per Gateways IP, Modbus addresses, groups, loads, etc.

 EnergySettings.csv


 General.csv


 GreenUpSettings.csv

8.3.3.7 "water" folder

It contains a series of ".csv" files with the recording of consumptions subdivided per "Devices" and "Groups"

Files name "type_sampling period_file version"

 devices_2013-10_7.csv

 groups_2013-11.csv

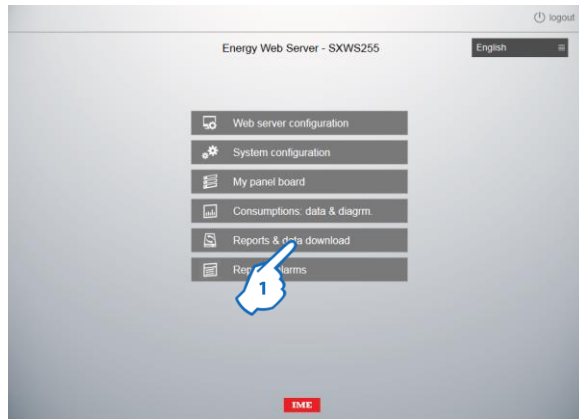
- type: consumptions distributed per devices or groups
- sampling period: year-month of recording
- version: increases in case of changes in the system configuration (adding of a Group / etc)

8.4 Reports & data download

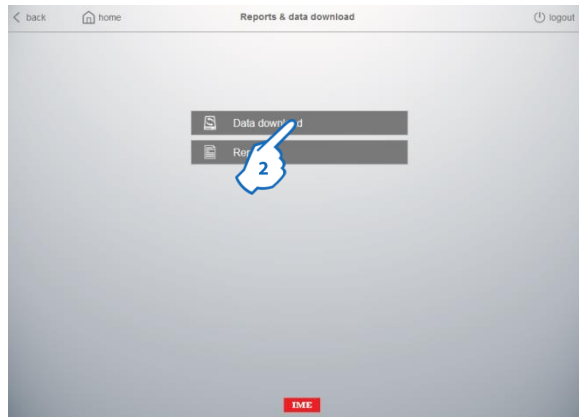
8.4.1 Data Download

This function allows you to directly export consumption data in “.csv” format for a single device, a group of devices or for all devices installed in the system.

In the Web Server’s home page

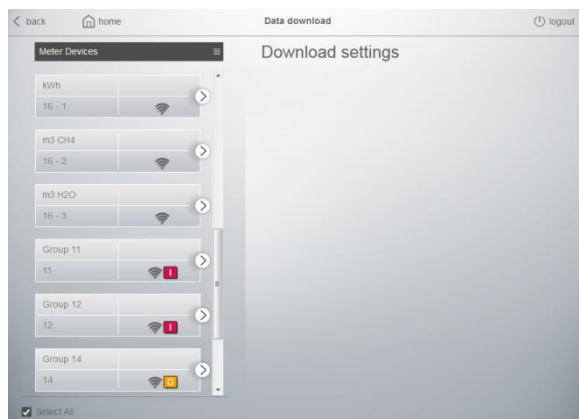


1. Click “Reports & data download”



2. Click “Data download”

Data download settings page appears





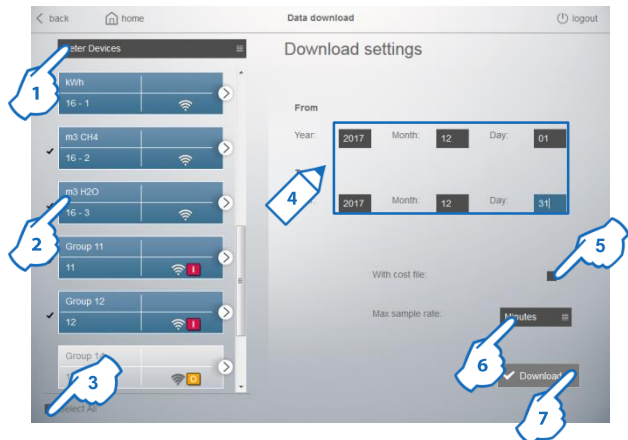
The page is divided into two sections:

section **A** shows the “physical” or “virtual” devices added by the users with their characteristics and status icons. It is possible to create a list of Meter devices, Groups or Loads

section **B** is the area where, once performed a selection, is possible to set:

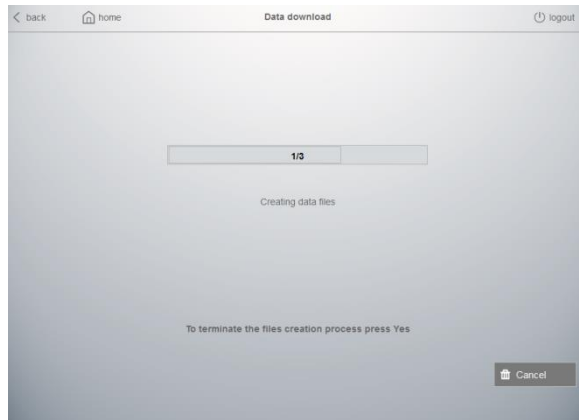
- starting and ending date of the reference period
- whether to include in the download also costs file(s)
- sample rate: 15 minutes (default), 1 hour or 1 day

To download csv files:

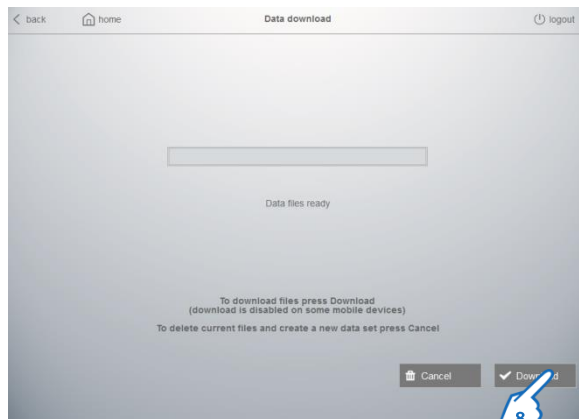


1. Click to select the list type that will be displayed: Meter Devices (default), Groups or Loads
2. Click to select Devices / Groups or Loads one by one (objects selected are highlighted in green) or 3. click “Select All” to select all Devices / Groups or Loads at once
4. Type starting and ending date
5. Click if you want to include in the download also a file with costs
6. Choose the sample rate according to which consumption and costs data will be grouped
7. Click “Download” to complete the process

An intermediate window with file(s) creation progress appears

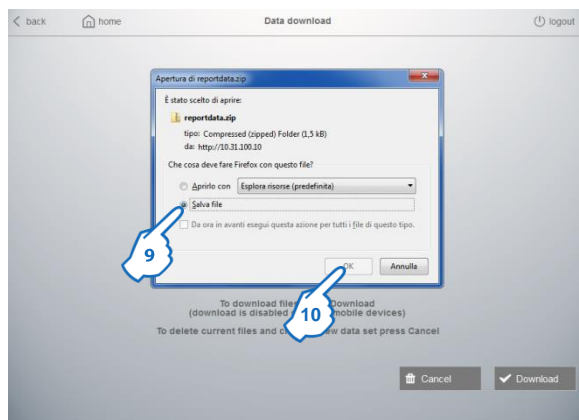


At the end of file creation process



8. Click "Download"

A pop-up window appears



9. Click to save the file on your computer , then 10. click "OK"

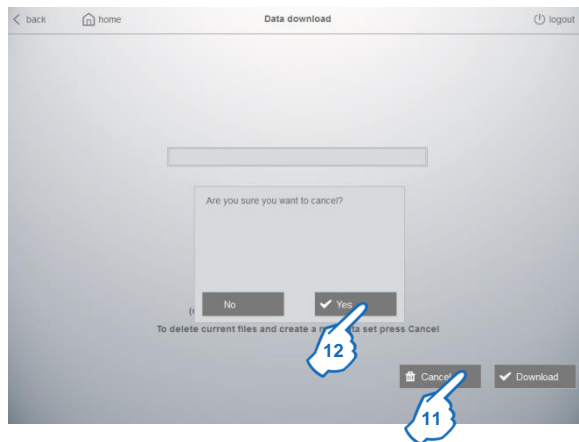
Files are now downloaded on your computer from the web server's database in an archive named "reportdata.zip".

Note: files will contain only data correctly saved on the database of the software; if a device is in communication error state or the web server is not running properly, consumption data won't be present on downloaded files.

In the .zip archive you can find a file with consumption data and a file with costs data for each consumption type: electricity, gas and water for the selected Device(s) / Load(s) or Group(s)

report_energy_devices_electricity.csv	20/05/2015 13:29
report_energy_devices_electricity_cost.csv	20/05/2015 13:29
report_energy_devices_gas.csv	20/05/2015 13:29
report_energy_devices_gas_cost.csv	20/05/2015 13:29
report_energy_devices_water.csv	20/05/2015 13:29
report_energy_devices_water_cost.csv	20/05/2015 13:29
report_energy_groups_electricity.csv	20/05/2015 13:29
report_energy_groups_electricity_cost.csv	20/05/2015 13:29
report_energy_loads.csv	20/05/2015 13:28
report_energy_loads_cost.csv	20/05/2015 13:28

To perform a new csv files download



11. Click "Cancel"

A pop-up window appears

12. Click "Yes" to return to the Data download settings page

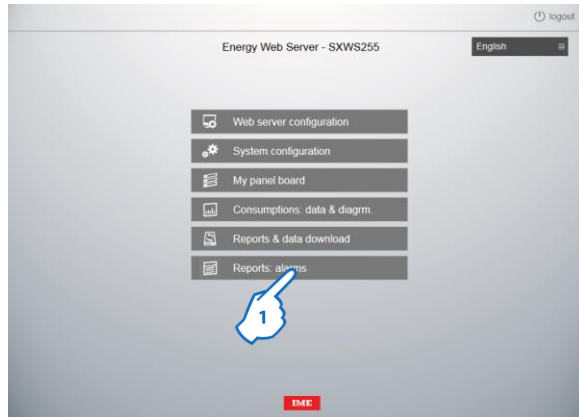
8.4.2 Reports

This function allows you to create a ".pdf" report starting from data contained in the database saved of the web server.

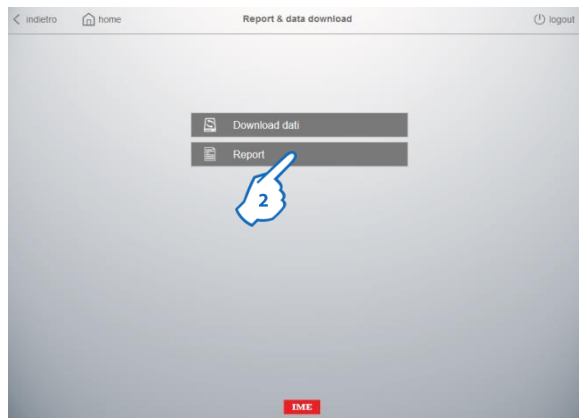
Two types of reports are available:

- a general report, monthly or yearly, containing overall consumption data of the system divided per type: Electricity, Gas and Water
- a detailed report, monthly or yearly, containing consumption data of the selected Device(s).

In the Web Server's home page

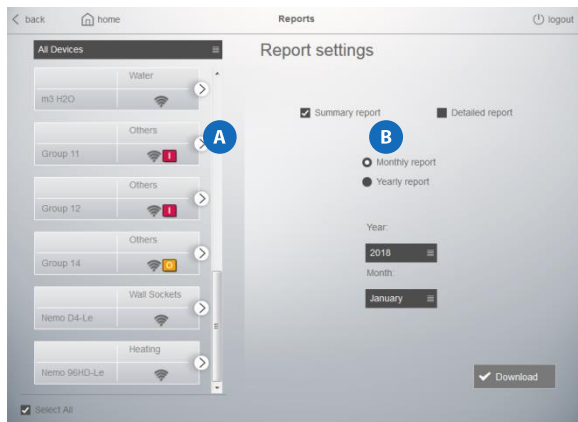


1. Click "Reports & data download"



2. Click "Reports"

Reports settings page appears



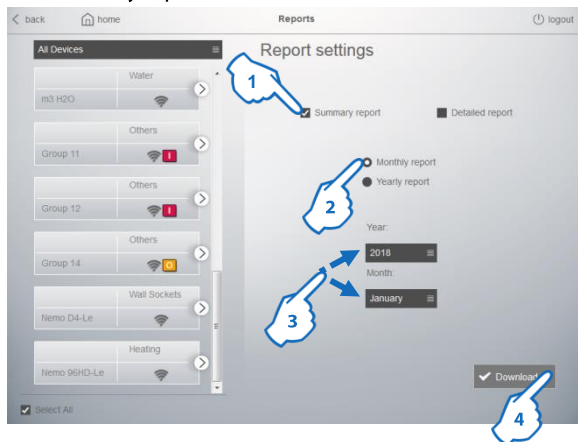
The page is divided into two sections:

section **A** shows the “physical” or “virtual” devices added by the users with their characteristics and status icons

section **B** is the area where it is possible to select:

- which type of report: Summary or Detailed
- the report period: Monthly or Yearly report
- specific month and year

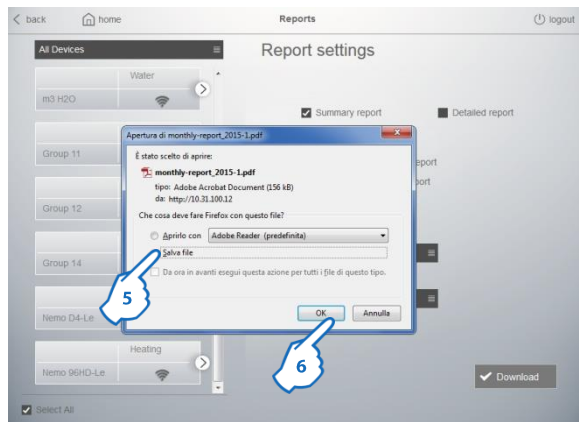
To create a Summary report:



To create this kind of report it is not necessary to select any device because this is a general document that contains Overall consumption data.

1. Select “Summary report”
2. Click to choose the report period: monthly or yearly
3. Choose month and year (for monthly reports) or only the year (for yearly reports)
4. Click “Download” to complete the process

A pop-up window appears



5. Click to save the file on your computer , then 6. click "OK"

The file is now downloaded on your computer from the web server's database.

Note: files will contain only data correctly saved on the database of the software; if a device is in communication error state or the web server is not running properly, consumption data won't be present on downloaded files.

In the destination folder you can find a file named:
"Report type and period"

 monthly-report_2014-12.pdf

 yearly-report_2014.pdf

- report type: monthly or yearly report
- period: year-month (for monthly reports) or year (for yearly reports)

To create a Detailed report:



1. Select "Detailed report"

2. Click to filter the Devices list per Groups / Loads or "All Devices"

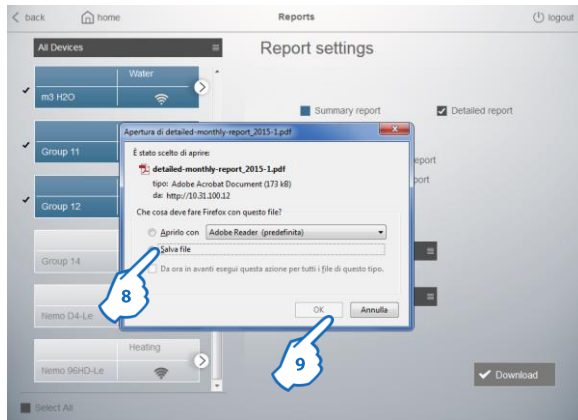
3. Click to select Devices one by one (objects selected are highlighted in blue) or 4. click "Select All" to select all Devices at once

5. Click to choose the report period: monthly or yearly

6. Choose month and year (for monthly reports) or only the year (for yearly reports)

7. Click "Download" to complete the process

A pop-up window appears





8. Click to save the file on your computer , then 9. click "OK"

The file is now downloaded on your computer from the web server's database.

Note: files will contain only data correctly saved on the database of the software; if a device is in communication error state or the web server is not running properly, consumption data won't be present on downloaded files.

In the destination folder you can find a file named:
"Report type and period"

 detailed-monthly-report_2014-12.pdf

 detailed-yearly-report_2014.pdf

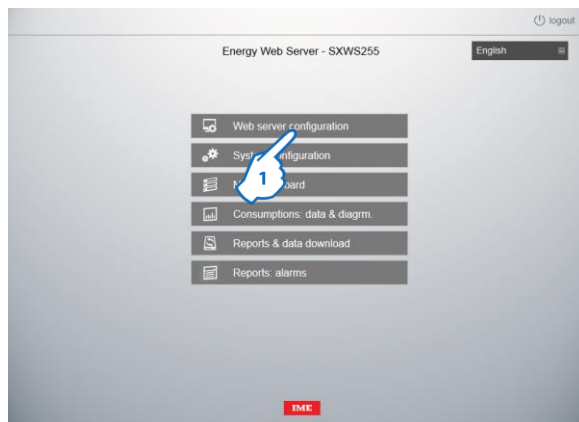
- report type: monthly or yearly report
- period: year-month (for monthly reports) or year (for yearly reports)

8.5 Pushing e-mail and notifications

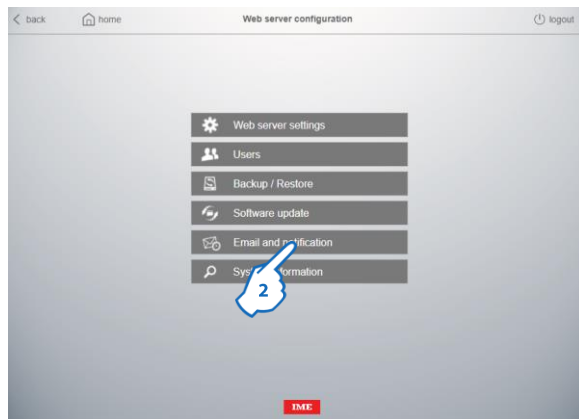
This function allows you to send via e-mail, monthly or yearly, to one or several e-mail address(es) an automatic reports in ".pdf" or in ".csv" format. To do this are required some settings in the Web server.

8.5.1 E-mail settings

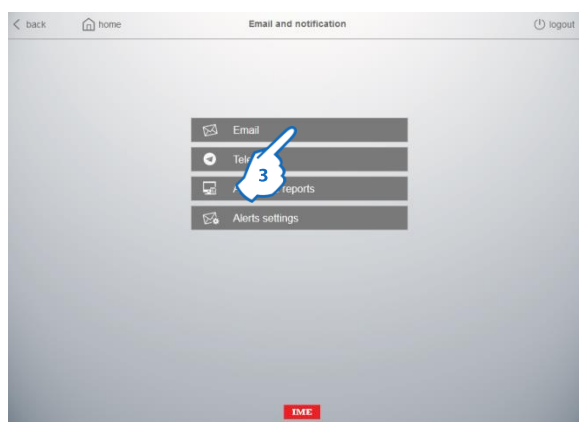
In the Web Server's home page



1. Click "Web Server configuration"



2. Click "Email and notification"



3. Click "Email"

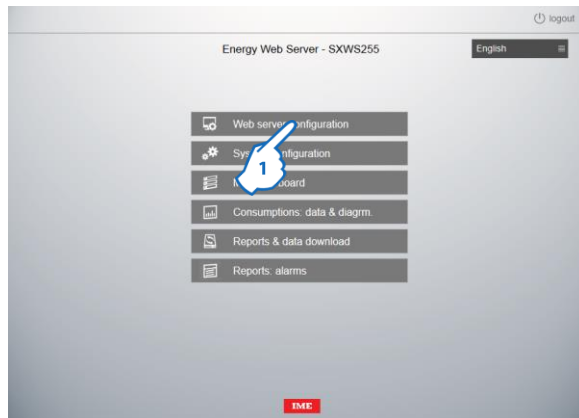
Email configuration page appears

This page is used to configure the sender e-mail profile; e-mail recipients will receive messages containing alerts, events, reports, ... with the email address configured here as "sender".

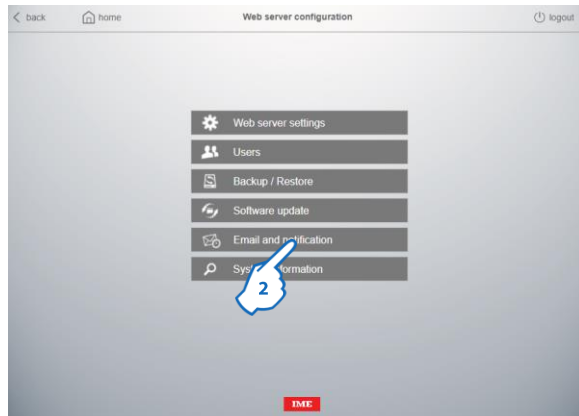
1. Type the sender complete e-mail address (ex. abc@gmail.com)
 2. Type the others e-mail account elements:
 - User: is the user name with which the sender access to his e-mail account
 - Password: is the password with which the sender access to his e-mail account
 - SMTP server name: is the Simple Mail Transfer Protocol name of the e-mail provider (ex. for gmail: smtp.gmail.com).
 - SMTP server port: optional setting used if the SMTP server port indicated by the provider is different from the default port value (port 465).
 3. Enable SSL: Secure Sockets Layer is an encryption system that is used by all those organizations that need to transit safely and indecipherable data, so that only the intended recipient can view it. Enable this option if it's indicated by your e-mail provider.
- Note:** the elements of points 2. and 3. are obtainable from your email provider or, for the main providers, by internet with a search engine looking for the SMTP characteristics for the outgoing mail.
4. Click "Save"
 5. Clicking "Test" a sample e-mail is sent to the sender e-mail address set in this page in order to test the connection/configuration

8.5.2 Telegram

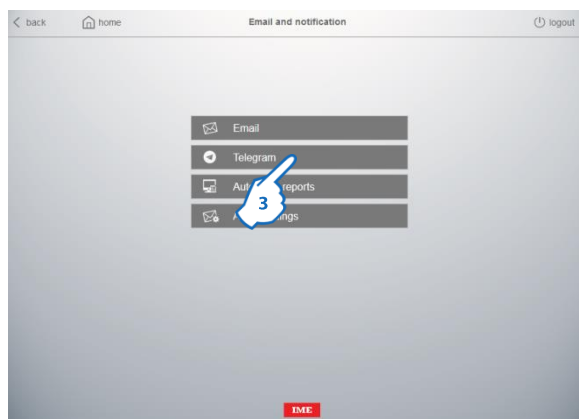
In the Web Server's home page



1. Click "Web Server configuration"



2. Click "Email and notification"



3. Click "Telegram"

Telegram configuration page appears

Telegram is a cloud-based mobile and desktop messaging application with a focus on security and speed

This page is used to configure the sender Telegram profile; Telegram users will receive messages containing alerts, events, ... with the Telegram BOT configured here as "sender".

Procedure:

1. Download the application (available for free for Android, iOS and Windows phones) on your smartphone and follow the installation process and the user profile configuration
2. Create the BOT Telegram using the procedure described on the application site (<https://core.telegram.org/bots#3-how-do-i-create-a-bot>). **Note:** BOT is a simply Telegram account used to create services.

3. Type the account elements :

- Name: name set in the BOT configuration process
- Token: unique alphanumeric code created during the BOT configuration process; It is used to identify univocally the BOT
- Password: it is created and inserted directly on this page; it is used to recognize users enabled to receive notifications from the Web server

Note: in this page will also appear the list of all users who have requested to receive notifications.

4. Click to enable/disable sending notifications to each Telegram user

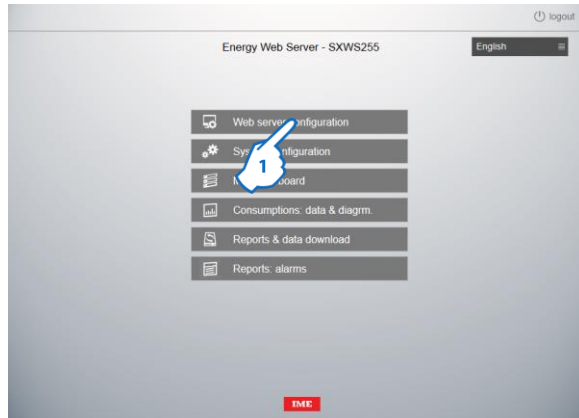
5. Click "Save"

6. Clicking "Test" a sample message is sent to all selected Telegram users in order to test the connection/configuration

Note: a telegram user, to be enabled to receive notifications from the Web server, will have to open the Telegram app on its smartphone and send to the BOT a message containing the **password** configured in this web page.

8.5.3 Automatic reports

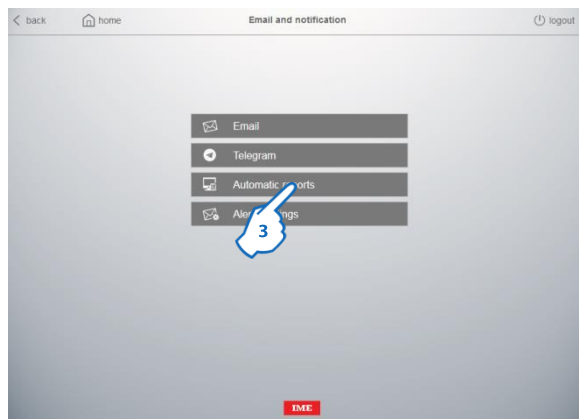
In the Web Server's home page



1. Click "Web Server configuration"

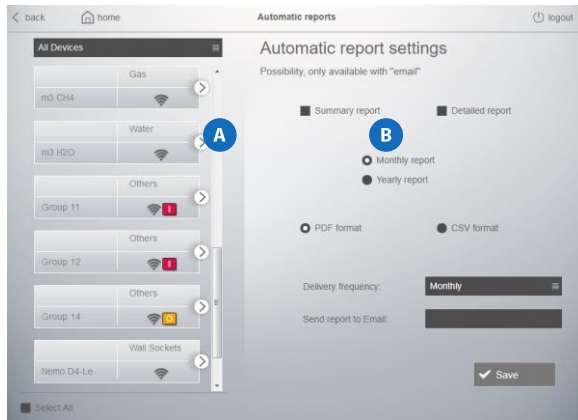


2. Click "Email and notification"



3. Click "Automatic reports"

Automatic report configuration page appears



The page is divided into two sections:

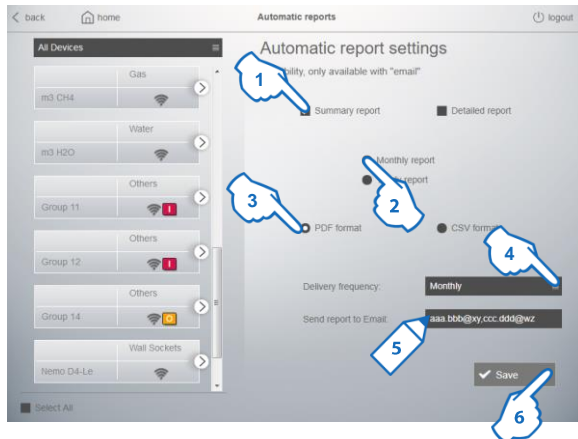
section **A** shows the “physical” or “virtual” devices added by the users with their characteristics and status icons

section **B** is the area where it is possible to select and set:

- which type of report: Summary or Detailed
- the report period: Monthly or Yearly report
- the report format: pdf or csv
- the e-mail address(es) of recipient(s).

Note: to enter multiple email addresses, use the comma (,) as separator (ex. aaa@bbb.xy,ccc@ddd.wz)

To set the sending of a Summary report:

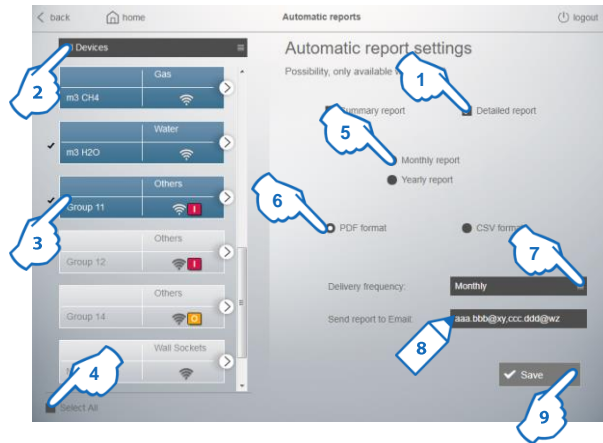


To create this kind of report it is not necessary to select any device because this is a general document that contains Overall consumption data.

1. Select “Summary report”
2. Click to choose the report period: monthly or yearly
3. Click to choose the report format: pdf or csv
4. Click to choose the report Delivery frequency: Monthly, Weekly or Daily
5. Type e-mail address(es) of recipient(s)
6. Click “Save” to complete the process

According to the selected period recipient(s) will receive the selected Summary report

To set the sending of a Detailed report:

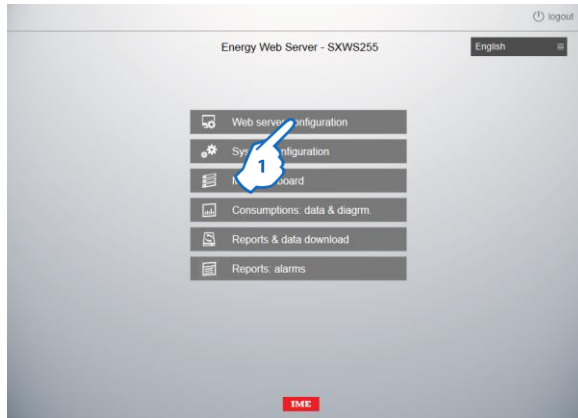


1. Select "Detailed report"
2. Click to filter the Devices list per Groups / Loads or "All Devices"
3. Click to select Devices one by one (objects selected are highlighted in blue) or 4. click "Select All" to select all Devices at once
5. Click to choose the report period: monthly or yearly
6. Click to choose the report format: pdf or csv
7. Click to choose the report Delivery frequency: Monthly, Weekly or Daily
8. Type e-mail address(es) of recipient(s)
9. Click "Save" to complete the process

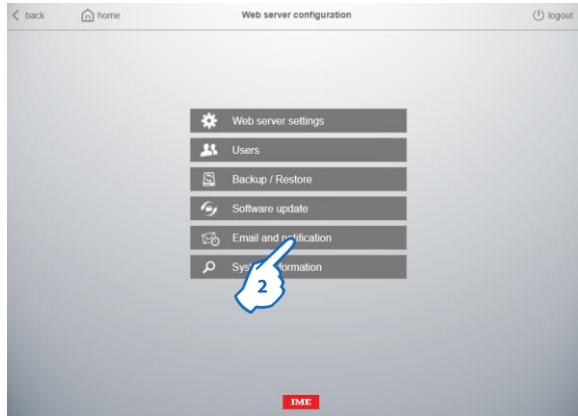
According to the selected period recipient(s) will receive the selected Detailed report

8.5.4 Alert settings

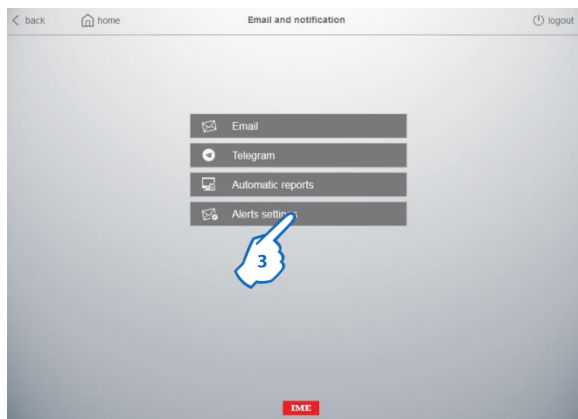
In the Web Server's home page



1. Click "Web Server configuration"

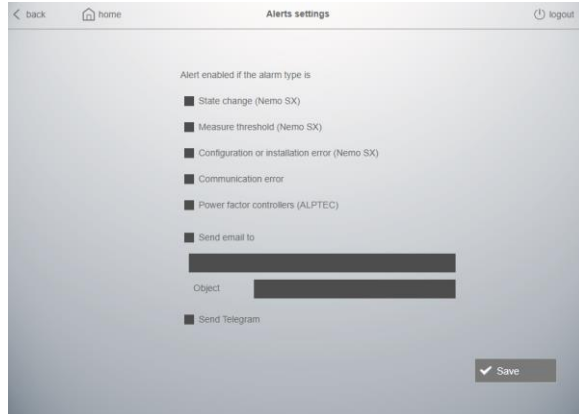


2. Click "Email and notification"

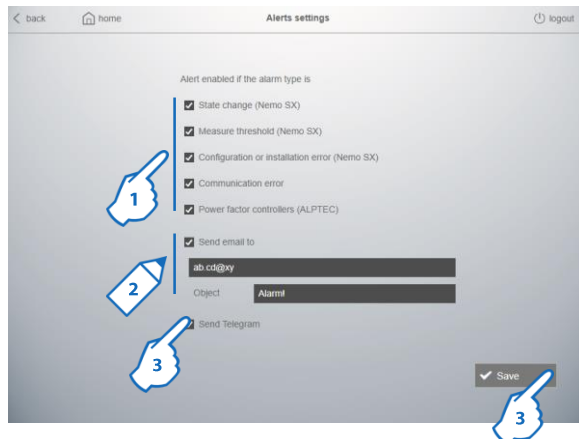


3. Click "Alert settings"

Alert settings page appears



This page is used to set the type(s) of alarm/event for which are sent e-mail or Telegram messages

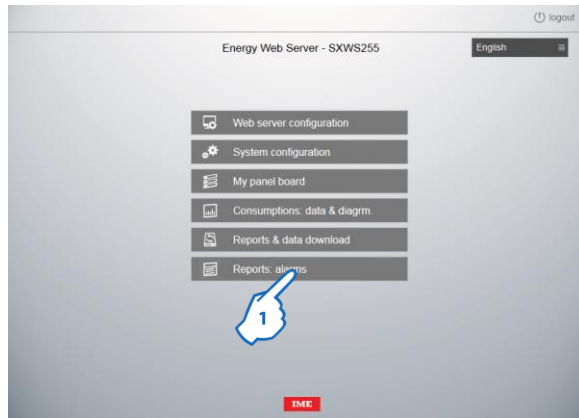


1. Select error/event causing the sending of e-mail or Telegram messages:
 - State change
 - Measure threshold
 - Configuration or installation error
 - Communication error
 - Power Factor Controller (ALPTEC)
2. Flag "Send email to" and type e-mail address(es) of recipient(s) and the object of the e-mail message if you want to send alert e-mail
3. Flag "Send Telegram" if you want to send alert Telegram messages
4. Click "Save"

8.6 Reports: alarms

This function allows the automatic creation and display of the list of alarms, events, ... , registered by each Modbus RS485/NEMO SX interface (cat.no SXI485) installed in the system.

In the Web Server's home page



1. Click "Reports: alarms"

The page with the list of registered alarms appears

Time	Device	Address[gw.modbus]	Type
2018-01-25 16:11:18	Group 14	Gateway 8 : 14	TRIPPED
2018-01-19 15:43:58	Group 14	Gateway 8 : 14	COMMUNICATION ERROR
2018-01-19 15:27:10	Group 14	Gateway 8 : 14	COMMUNICATION ERROR
2018-01-19 15:19:50	Group 14	Gateway 8 : 14	COMMUNICATION ERROR
2018-01-19 15:14:39	Group 14	Gateway 8 : 14	COMMUNICATION ERROR
2018-01-19 15:09:48	Group 14	Gateway 8 : 14	COMMUNICATION ERROR
2018-01-08 08:38:25	Group 11	Gateway 8 : 11	TRIPPED
2018-01-07 15:05:54	Group 14	Gateway 8 : 14	COMMUNICATION ERROR
2018-01-07 04:56:03	Group 14	Gateway 8 : 14	COMMUNICATION ERROR

The page shows:

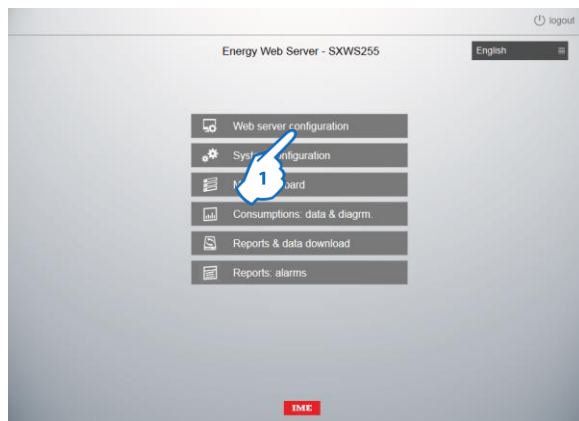
- Data & Time of the alarm, event, ...
- Name assigned to the device/group of devices NEMO SX
- Name of the Gateway and Modbus address of the device/group of devices NEMO SX in which the event occurred
- Type of alarm/event: e.g. Tripped, Duplicated function, Communication error, ...

8.7 System information

"System information" page allows the user to have information relating to the operation of the Web Server such as:

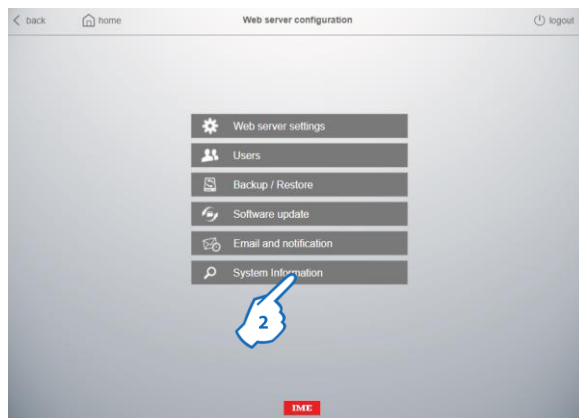
- Firmware version installed
- Date and Time of the last restart
- System resources allocated
- Storage space allocated and Integrity of the database
- ...

Access to the page



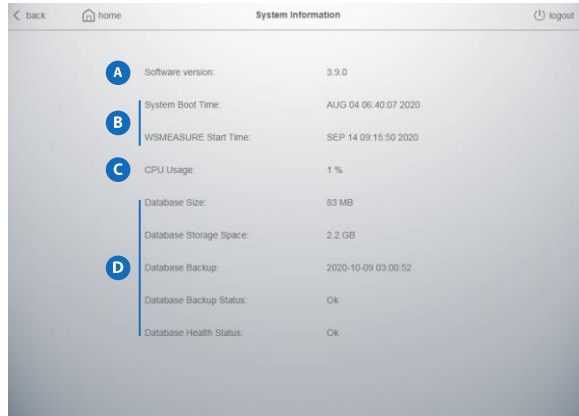
In the Web Server's home page

1. Click "Web Server configuration"



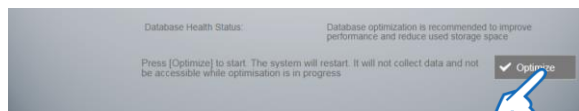
2. Click "System information"

System information page appears



The page contains following information:

- A** Firmware version installed
- B** Date and Time of the last restart of the hardware
Date and Time of the last restart of the application embedded on the hardware
- C** Percentage of CPU used. A consistently high value (> 80%) can indicate some hardware problems
- D** Information about the Database saved in the Web server:
 - Database size
 - Available storage space for the Database
 - Date and time of the Database Backup performed by the Web server
Note: this Backup is different from the one created by the user with the "Backup" function, as describe in the next chapter of this manual.
 - Status of the Database Backup: "Ok" or "Error" (in case of error contact technical support)
 - Database Health status: informs the user on the necessity to optimise the internal Database of the Web Server.
If the database becomes too large, performances of the Web Server will deteriorate and there is the risk of errors in histograms displaying and in the saving of data.
Consequently, it is suggested to optimize the Web Server database via the "Optimize" button that appears in the lower part of the page.

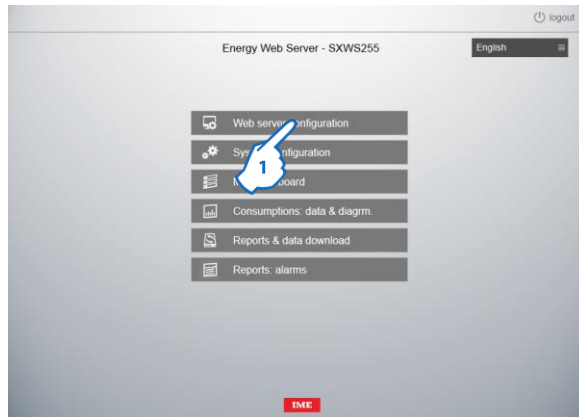


To perform the optimization of the Database, **3**. Click "Optimize".

9 Backup and Restore

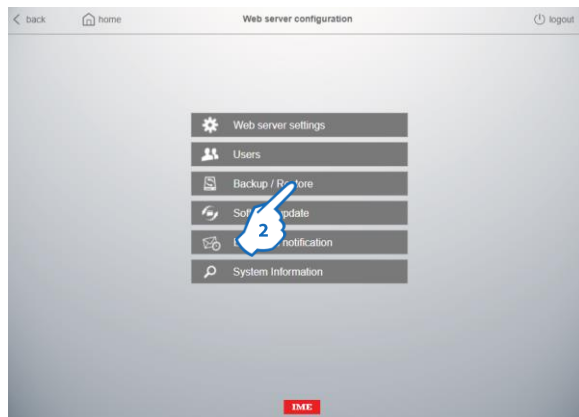
These procedures are used to create a backup of the device configuration and to perform the restore of a saved configuration.

9.1 Backup procedure



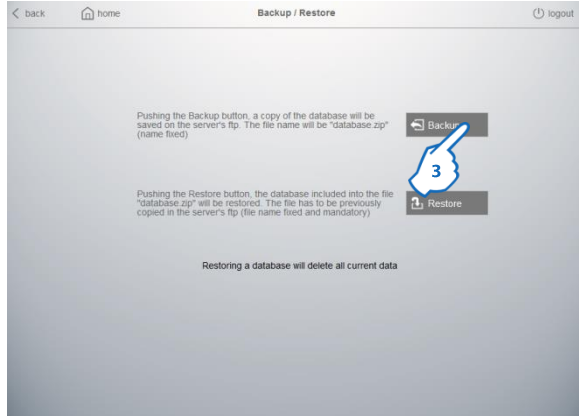
In the Web Server's home page

1. Click "Web Server configuration"

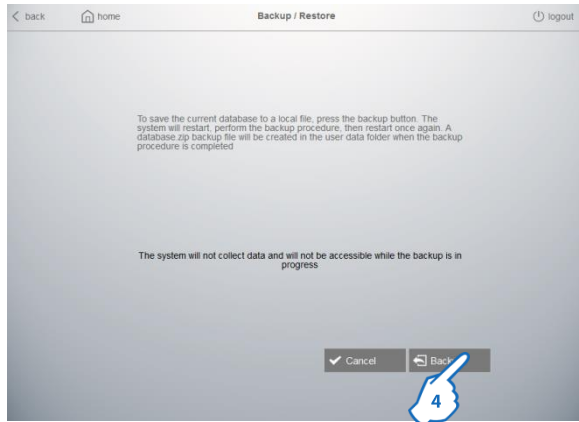


2. Click "Backup/Restore"

Backup and restore page appears



3. Click "Backup" to access the page



4. Click "Backup" to perform the function.

A file named "database.zip" is automatically saved on the HDD of the web server. It's possible to save in local the file by accessing to the HDD via FTP or Network drive (see § 8.3.2)

	devices	06/03/2014 10:07
	energy	06/03/2014 10:00
	eqcheck	12/01/2014 01:01
	gas	03/03/2014 07:00
	overallTotal	04/03/2014 18:00
	settings	16/09/2013 19:32
	water	01/03/2014 02:00
	database.zip	06/03/2014 11:02

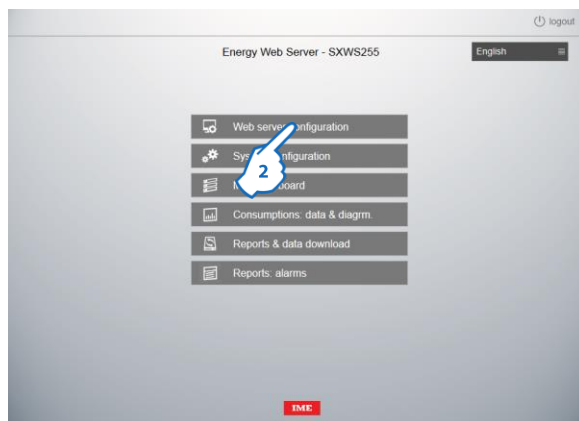
Note: not modify the zip folder's name and its contents to avoid problems during the restore procedure! (names and types of files, etc..)

9.2 Restore procedure

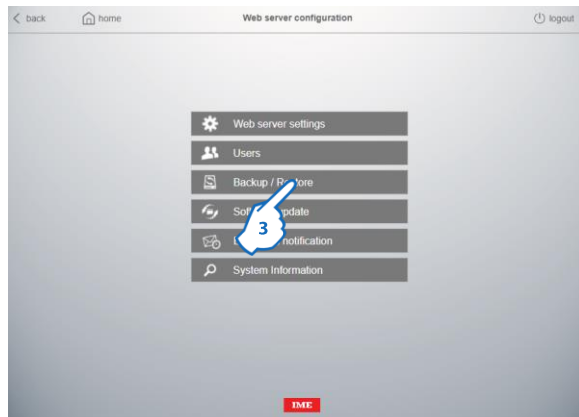
1. Copy the file to restore "database.zip" in the Web server's FTP

devices	06/03/2014 10:07
energy	06/03/2014 10:00
eqcheck	12/01/2014 01:01
gas	03/03/2014 07:00
overallTotal	04/03/2014 18:00
settings	16/09/2013 19:32
water	01/03/2014 02:00
database.zip	06/03/2014 11:02

In the Web Server's home page

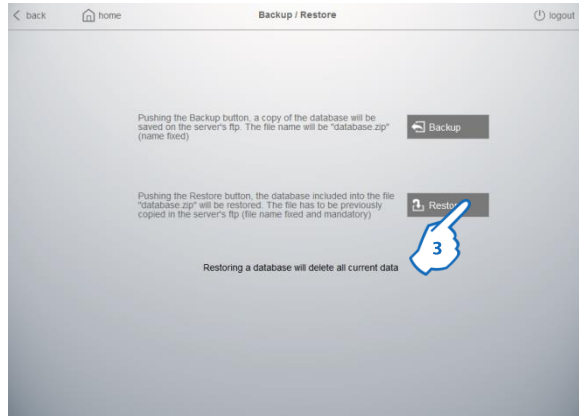


2. Click "Web Server configuration"

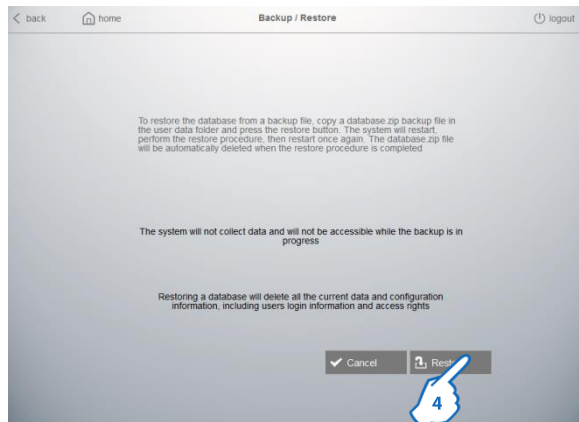


3. Click "Backup/Restore"

Backup and restore page appears



4. Click "Restore" to access the page



5. Click "Restore" to perform the function.

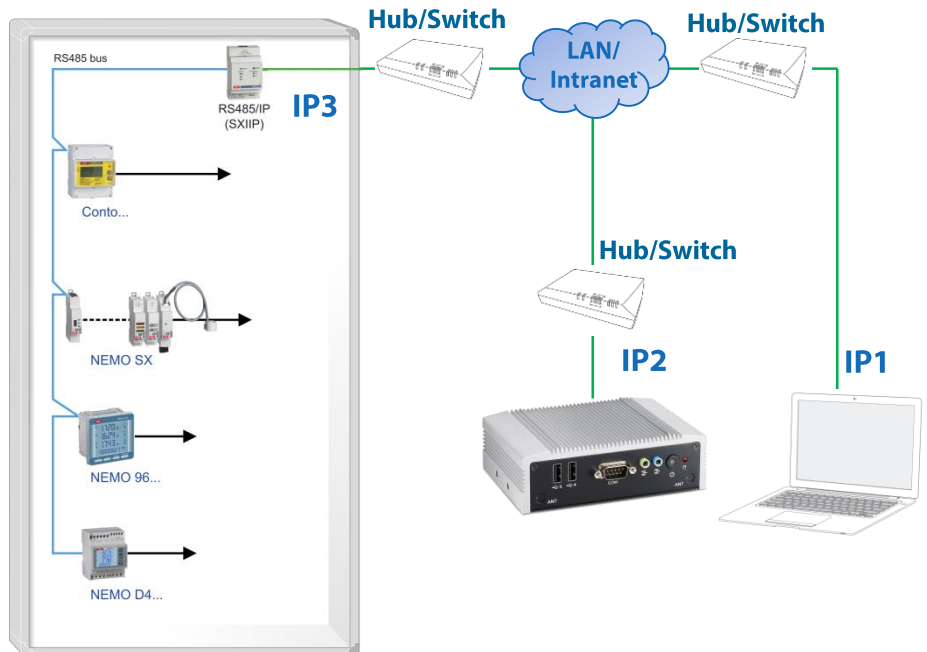
Note: the good result of the operation will be guaranteed only if the folder's name and its contents has not been modified after the backup (names and types of files, etc..).

10. Network type and access mode

10.1 LAN/intranet

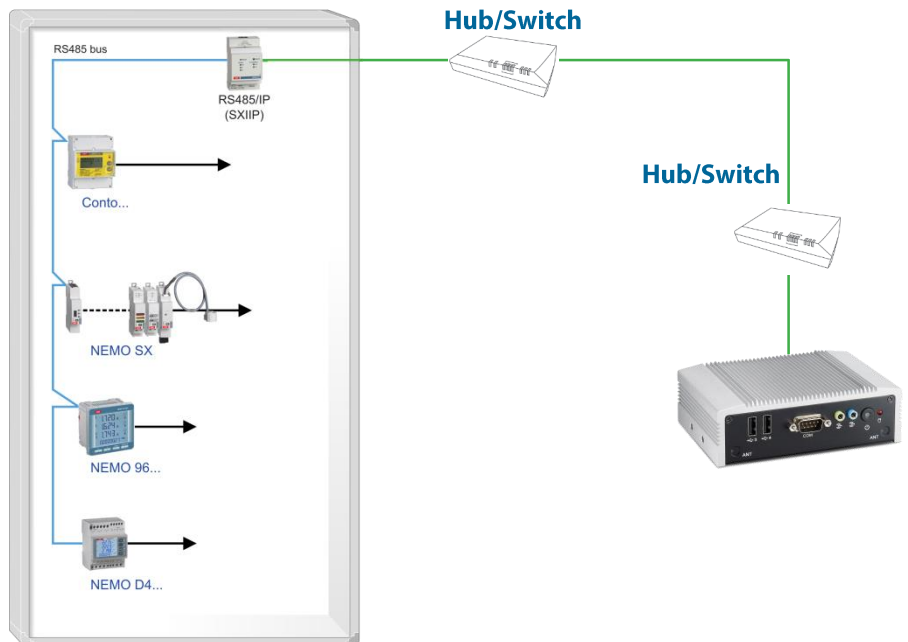
Private network

Addresses and rights managed by the Manager of the Building

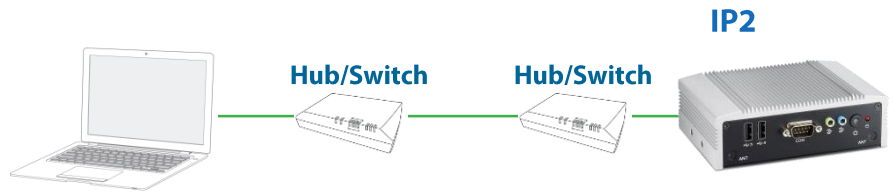


10.1.1 Ports

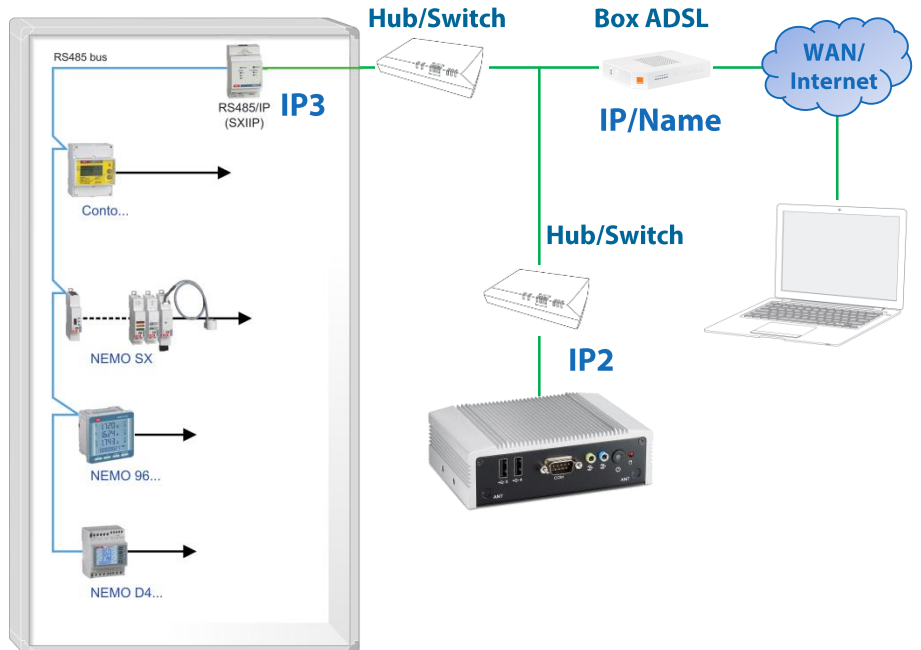
- Web Server to Gateways or to Slave Web servers:
 - Port 502, Modbus TCP



- Users to Web Server:
 - Port 80, HTTP (<http://IP2> by web browser)
 - Port 443, HTTPS (<https://IP2> by web browser)
 - Port 443, Telegram
 - Ports 20 and 21, FTP (<ftp://IP2> by web browser or in "My Computer")



10.2 WAN/Internet
Public network



Fixed* IP Box: the IP address remains the same
 ⇒ Access by IP address (Fixed IP paying according to the operators)

Dynamic* IP Box: the address may change
 ⇒ Access by Name (possibility of creating a dynamic DNS account – Example www.dyndns.org).

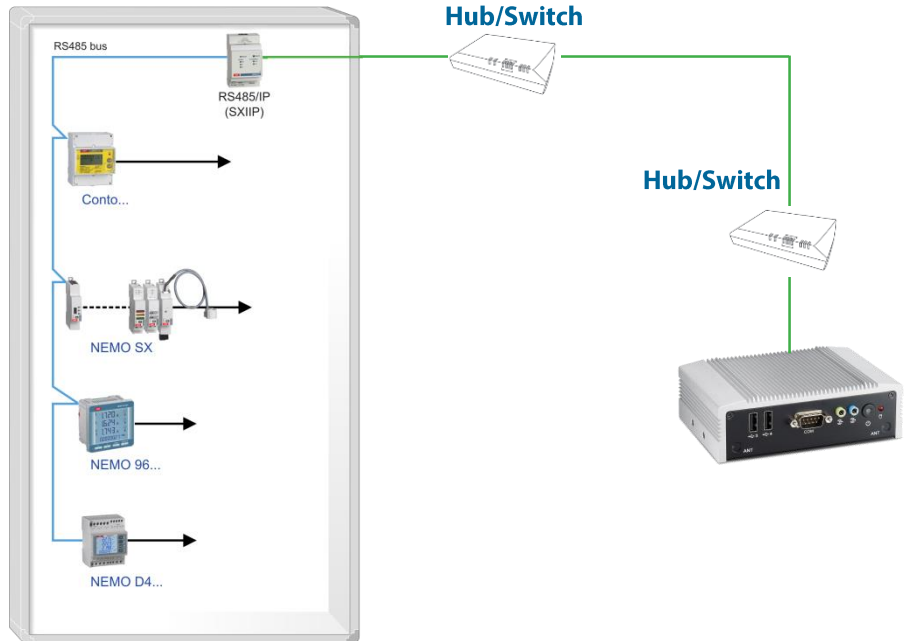
- User: access by the public address of the Box (IP/Name, Internet)
- Web Server: always has a fixed private address (IP2, Intranet)

⇒ It is necessary to achieve the association web server/Box*

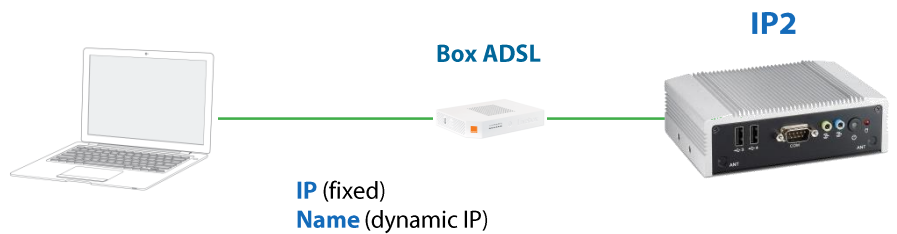
* More information from the ADSL operator

10.2.1 Ports

- Web Server to Gateway:
 - Port 502, Modbus TCP



- Users to Web Server:
 - Port 80, HTTP (<http://IP2> by web browser)
 - Port 443, HTTPS (<https://IP2> by web browser)
 - Ports 20 and 21, FTP (<ftp://IP2> by web browser or in "My Computer")



11. FAQ

11.1 Access problems

If typing the PIN and PUK codes, Web Server's home page is not displayed correctly (continuous refresh of the page), you have to do the following operations :

- delete the cookies
- delete the internet temporary files
- delete the cache
- delete the chronology

11.2 Telegram problems

If the "Test" function in the Telegram page does not work correctly, you have to check:

- the correct opening of the communication port 443 (*see § 10.1.1*)
- the correct configuration of the DNS of the Web server in the "Network settings" page (*see § 7.5.1*)

11.3 E-mails sending test problems

If the "Test" function in the e-mails sender configuration page (page "Email" in the "Email and notification" menu) does not work correctly, you have to check:

- the correct opening of the communication port configured in the menu
- the correct configuration of the DNS of the Mini Web server in the "Network settings" page (*see § 7.5.1*)
- Options of your e-mail account related to access by deemed less secure applications

IME

BTicino SpA

Viale Borri, 231

21100 Varese - Italy

www.imeitaly.com

IME reserves at any time the right to modify the contents of this booklet and to communicate in any form and modality, the changes brought to the same.