



F459 - 003549

Installation Manual

MyHOME

Index

General information	4
Warnings and recommendations	4
Main functions	4
Description	4
Connections	5
Driver manager	6
Authentication	6
Home	7
Drivers	8
Driver list	8
Install a driver	10
Update a driver	13
Network	14
Own/Range IP	15
Password	16
Data/Language	17
Restart/Logout	19
Nuvo Driver	20
Status	20
Preferences	21
Players/Zones	22
Add and configure a zone	24
Basic controls	24
Radio direct access function	28
Playlist direct access function	30
Deezer playlist direct access function	32
Top 10 direct access function	34
Default Line In	35
Source order of the source cycle	36
Save a zone	37
Scenarios	39
Create a scenario	40
Backup/restore	44
Save the configuration	44
Restore a saved configuration	44
Restore the factory settings	46

General information

Warnings and recommendations

It is important to read this manual carefully before proceeding with the installation. The warranty becomes automatically void in case of negligence, improper use, tampering by unauthorised personnel.

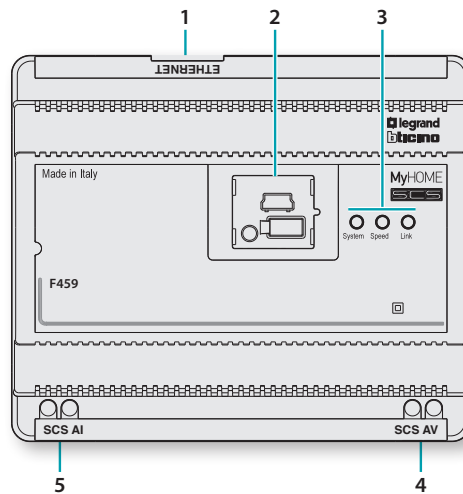
Main functions

The F459 Driver Manager allows MyHOME integration with systems and devices made by other producers using dedicated drivers. As an example this solution allows you, using the MyHOME zone temperature control system, to manage VRV and VRF and air conditioning systems from the main producers on the market or to use the Light Automation devices to control the LED lamps (HUE type and similar) or the BTicino NUVO audio digital system. It requires the installation and configuration of the specific driver for the integration required after the purchase of the device, with the exception of the MyHome-Nuvo driver that is already pre-installed.

The device and the other brand drivers are configured using the web pages described in the sections:

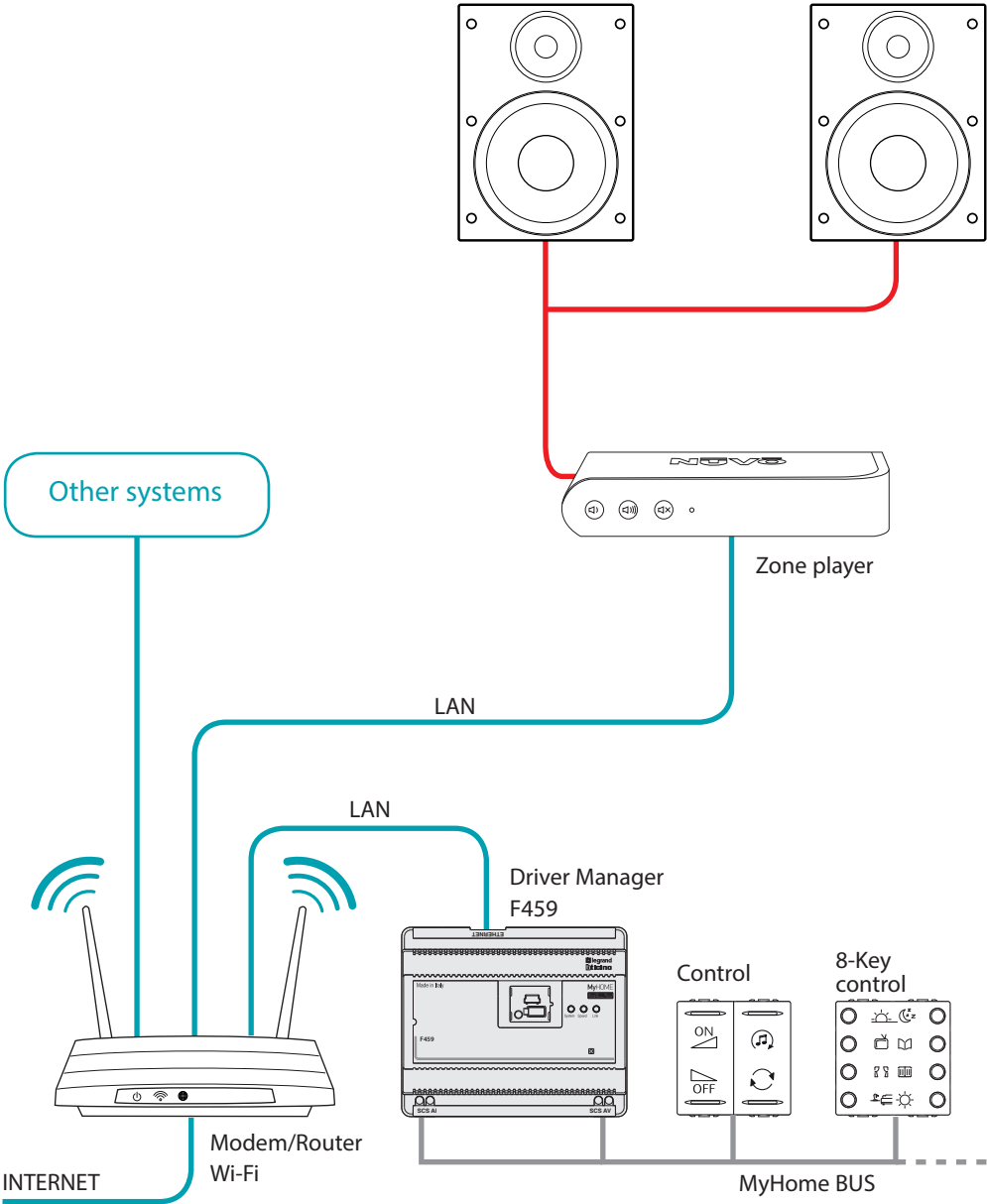
- Driver manager
- Nuvo Driver (the configuration only of the Nuvo driver is described because it is the only integrated driver with complete and free functions).

Description



1. RJ 45 for LAN Ethernet 10/100Mbit.
2. Under the door are:
 - USB port for firmware update using the PC;
 - RESET pushbutton;
 - RS232 serial connector.
3. User interface:
 - Speed: connection speed
ON = 100 Mbit;
OFF = 10 Mbit.
 - Link : when on, it indicates that the ethernet network has been found;
 - System: on connecting the power supply it switches on and off and the next time it switches on it indicates that the Driver Manager is operative.
4. 2 wire BUS for automation bus connection (private riser)
5. Clamp not used

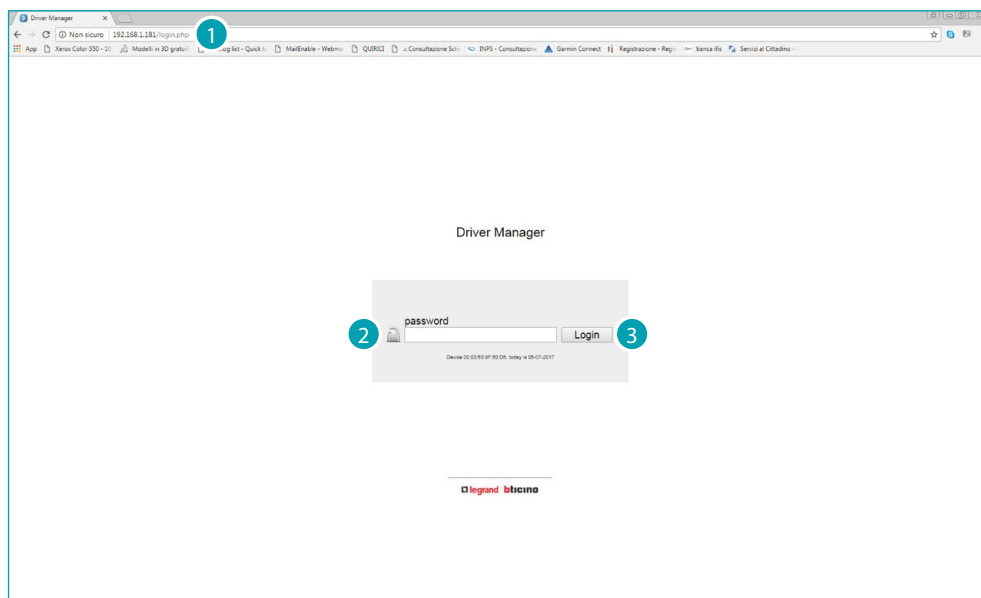
Connections



Driver manager

Authentication

To access the configuration web pages

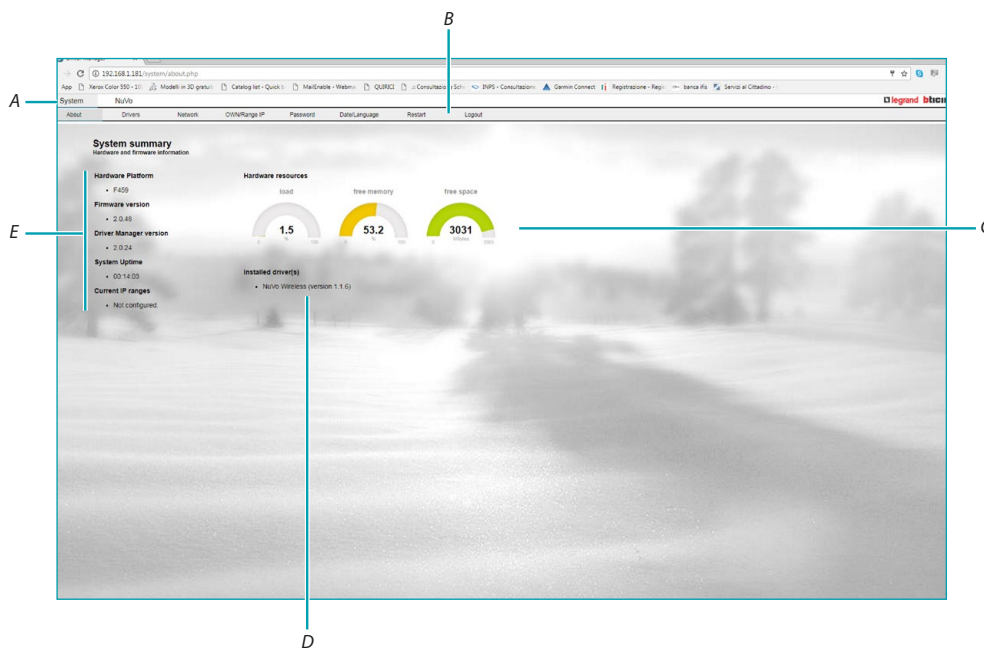


- 1 enter the ip address of the device in the browser (default 192.168.1.45)
- 2 enter the password (default Admin123)
- 3 click to confirm

Home

In the home page it is possible to display various data about the system, about the hardware resources and the installed drivers.

It is possible to display the pages of the driver manager (System) and of the installed drivers (e.g. Nuvo) with the navigation bars.



A selection bar of the Driver manager/other brand Drivers web pages

B selection bar of the Driver manager web pages:

DRIVERS	This page can be used to display the list of installed drivers, enable/disable them, delete them or add new ones.
NETWORK	This page can be used to enter the parameters of Ethernet network connection
OWN/RANGE IP	This page can be used to set the OPEN password and the range of IP addresses that can access the driver manager without using this password
PASSWORD	This page can be used to change the web access password
DATA/ LANGUAGE	This page can be used to set the date/time and the language of the system and of the web pages
RESTART	This page can be used to restart the system
LOGOUT	To exit the system

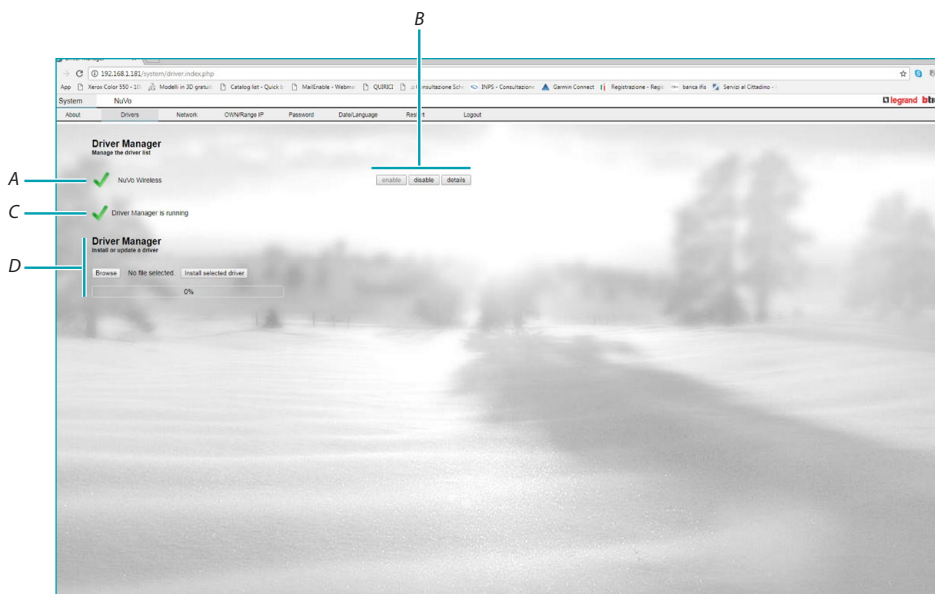
C counters of the device hardware resources

D list of installed drivers

E hardware and firmware information of the device

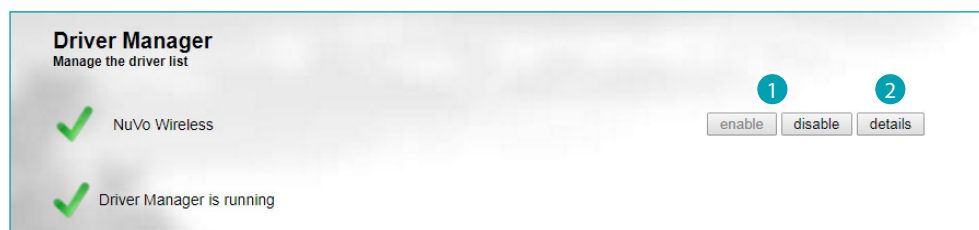
Drivers

This page can be used to display the list of installed drivers, enable/disable them, delete them or add new ones.

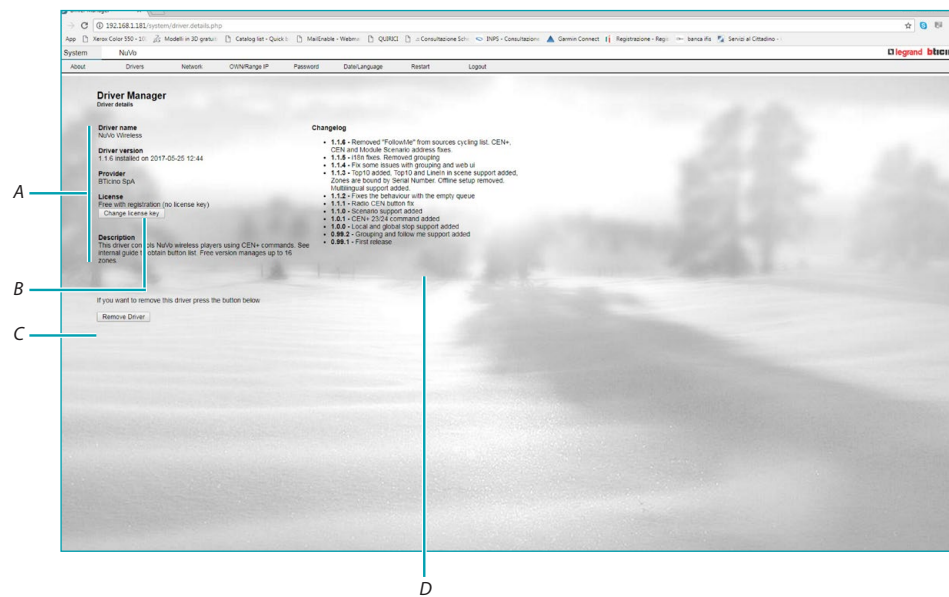


- A list and status of the installed drivers
- B enable/disable installed driver
- C status of the driver manager
- D install a driver

Driver list



- 1 click to enable/disable the driver
- 2 click to display driver information



A name, version, provider and description of the driver functions

B driver license status

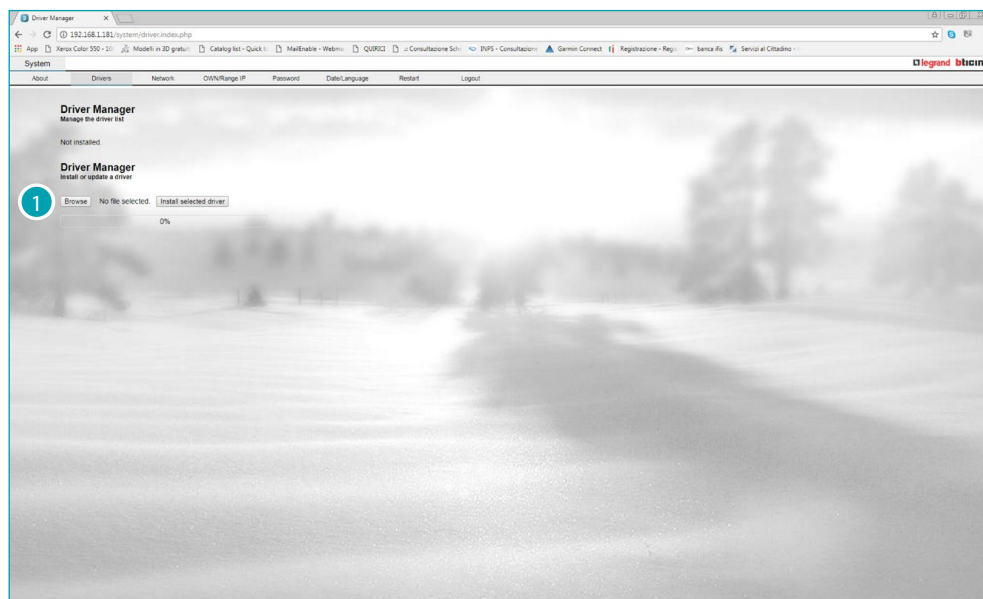
[Change license key](#)

Click to enter the license key obtained after the purchase. In the case of the Nuvo driver, it is not necessary because it is free.

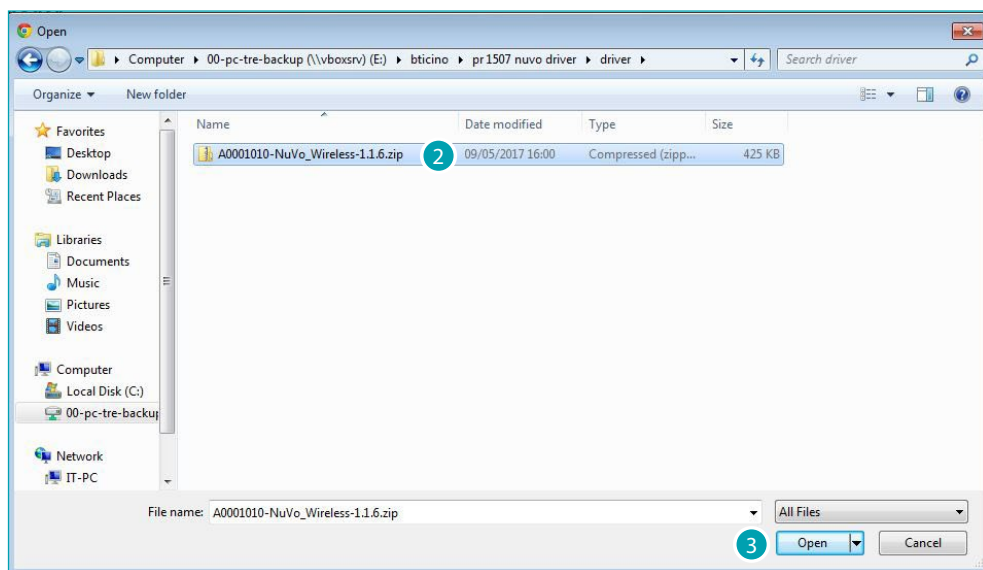
C Remove driver

D List of versions and implemented functions

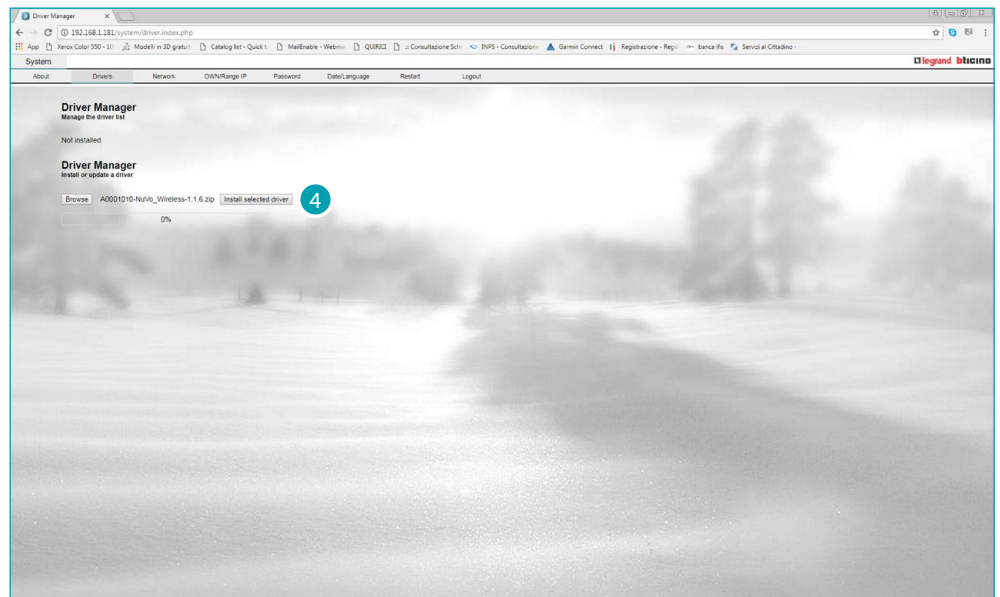
Install a driver



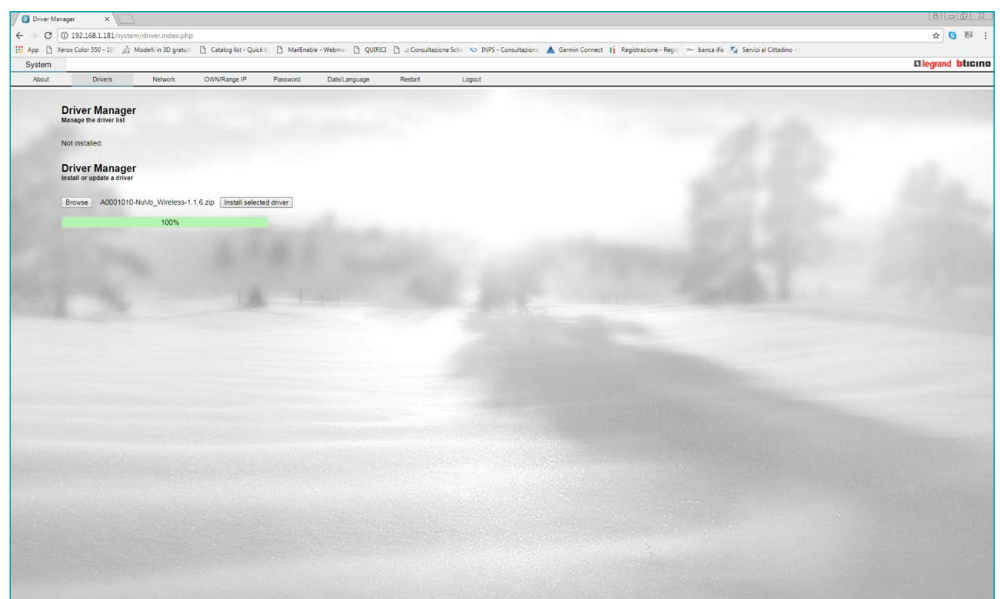
- 1 click to per find the installation file on the disk



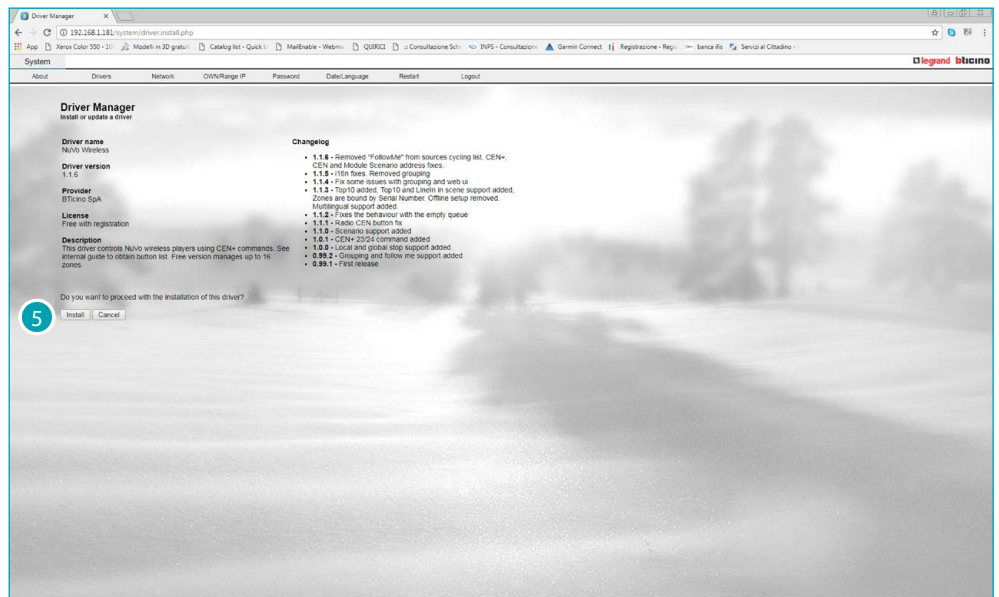
- 2 select it
- 3 click to upload it



4 the update file is uploaded. Click to install it.

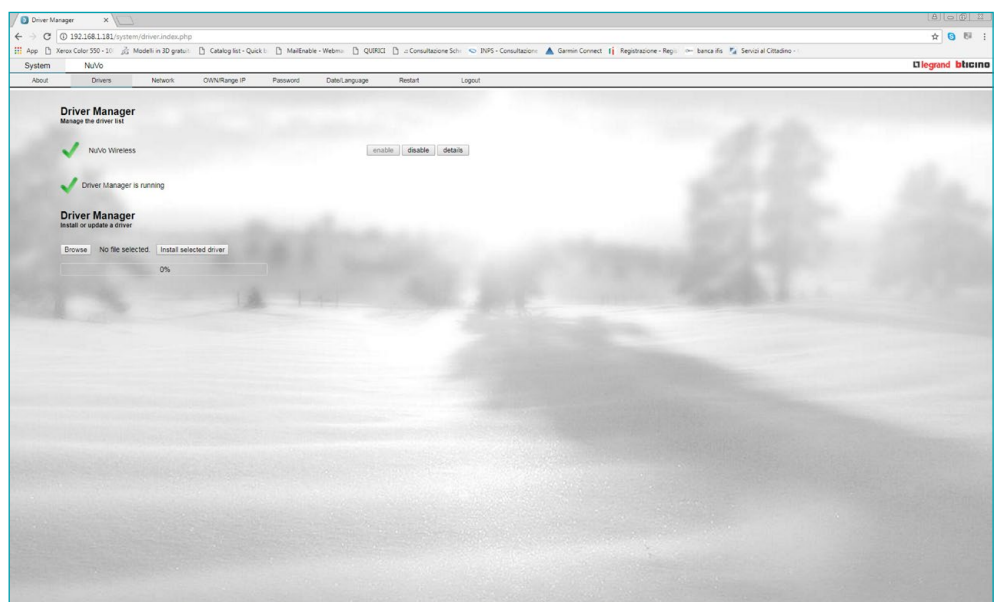


Wait for the end of upload.



The features of the uploaded driver are shown here

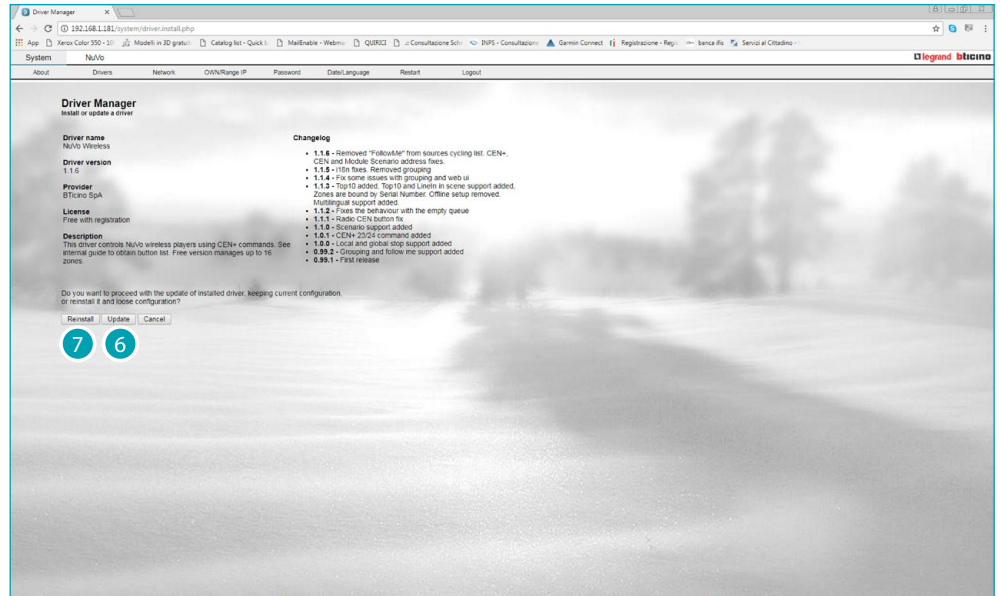
5 click to install it



The driver is now installed.

Update a driver

If a driver is already installed and the update to a new version has to be made, repeat the [previous procedure](#) up to point 5, then:

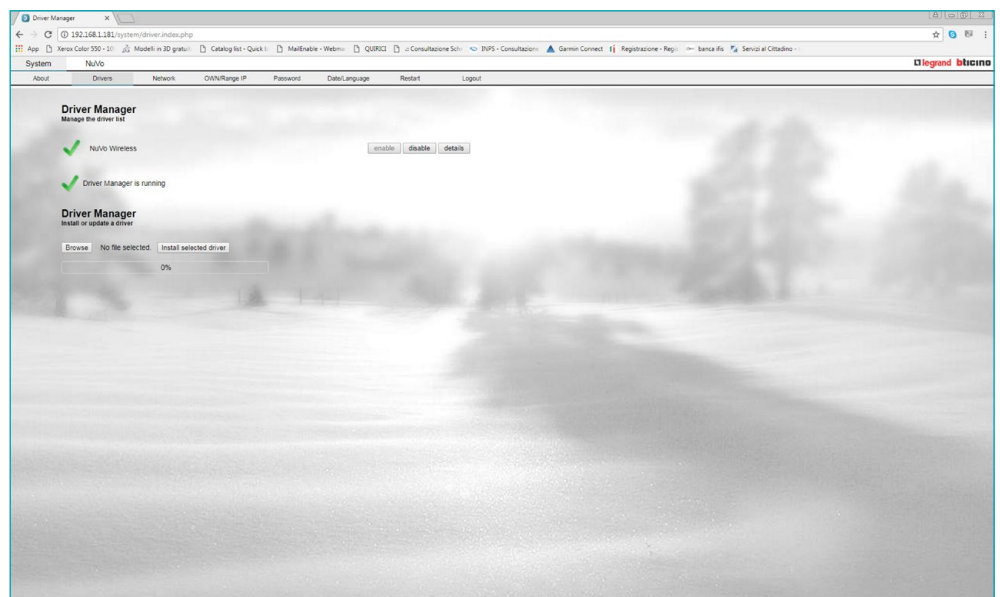


The features of the new driver version are shown here

6 click to update the driver keeping current configuration

Or

7 click to install it again losing the current configuration

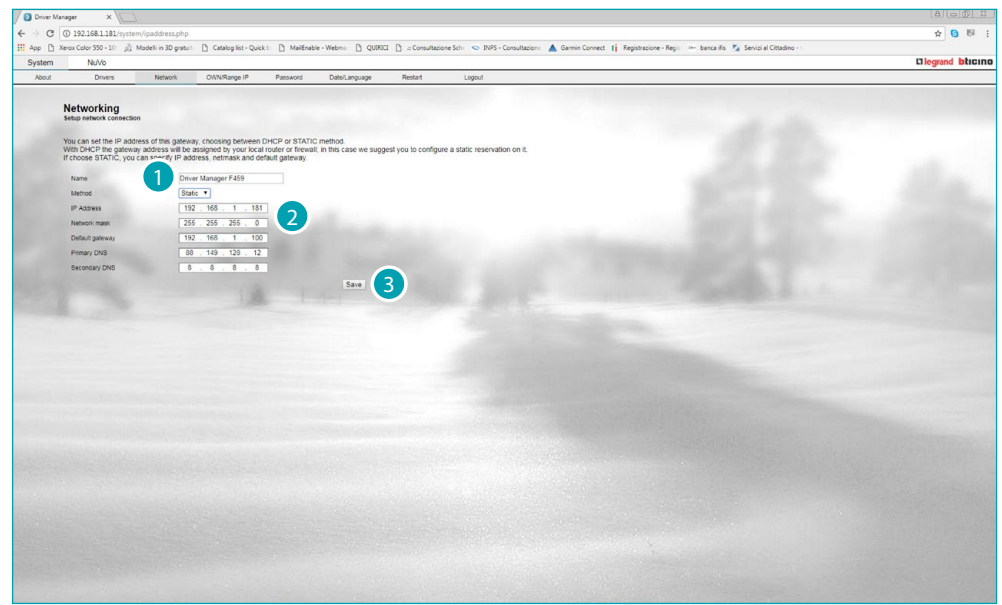


The driver is now updated

Network

This page can be used to enter the parameters for connection to the Ethernet network.

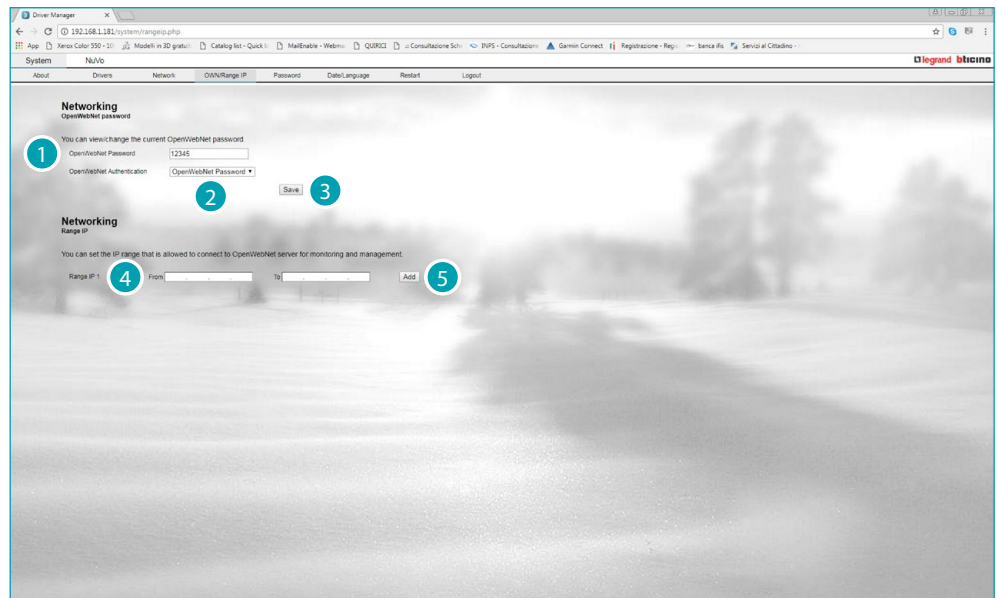
Caution: Before changing the default values, contact the network administrator. In addition to preventing the service from becoming active, wrong values can cause malfunctioning during the communication of other network devices.



- 1 enter a name for the driver manager
- 2 enter the connection parameters:
 - Method** - select if the address is a static address (in this case enter the parameters below), or a DHCP dynamic address.
 - IP address and network mask** - enter the typical parameters of TCP/IP protocol networks, necessary for the identification of the device within the local network.
 - Primary DNS and Secondary DNS** - Enter the primary and secondary IP addresses of the Internet Service Provider (ISP) supplied at the moment of the contract subscription.
- 3 click to save the configuration

Own/Range IP

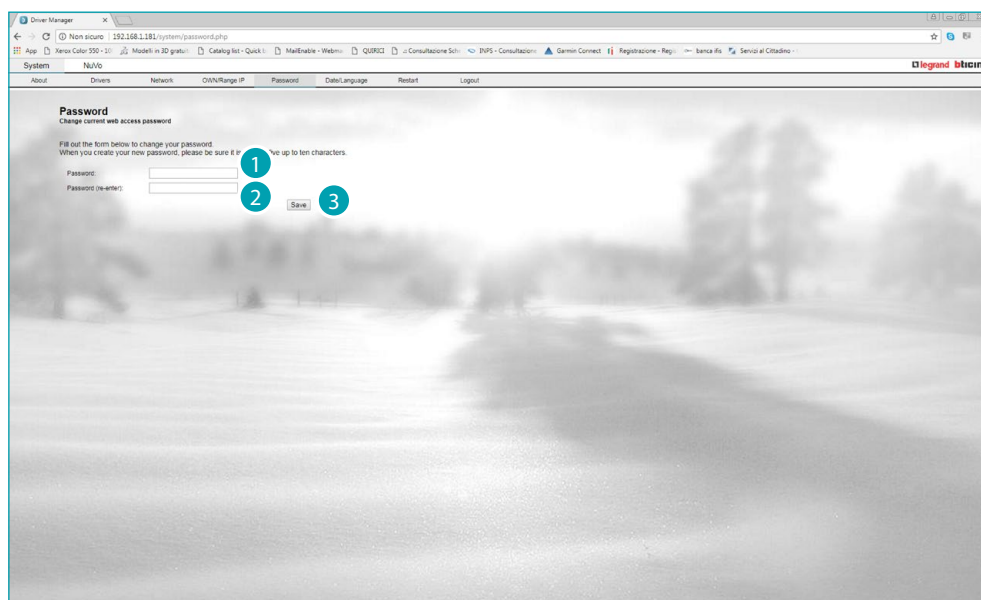
This page can be used to set the OPEN password and the range of IP addresses that can access the driver manager without using this password



- 1 enter the open password
- 2 select if the Authentication algorithm is of the HMAC type
- 3 click to save
- 4 select the range of IP addresses that will not require an open password for local network authentication
- 5 click to confirm

Password

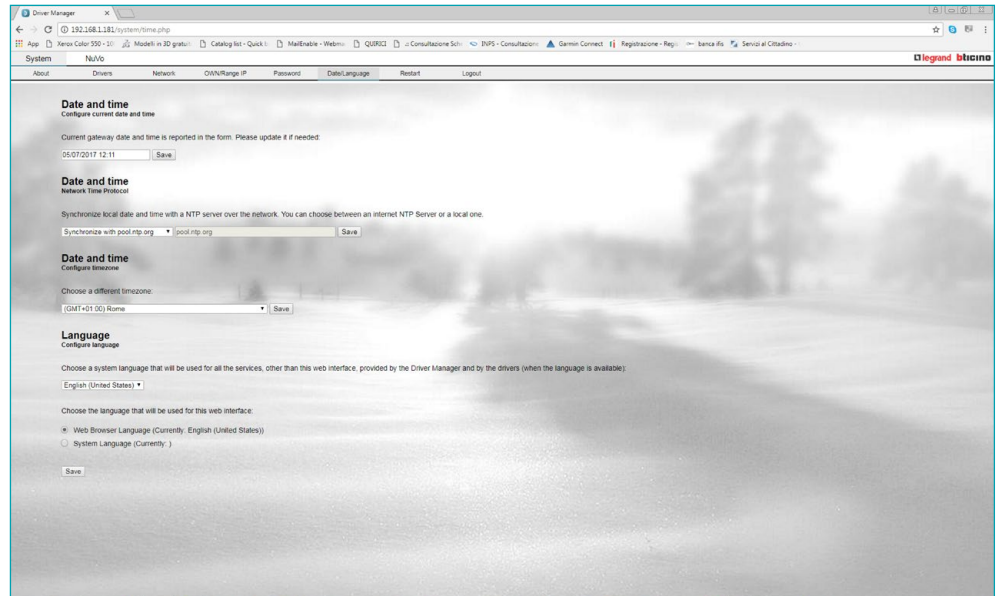
This page can be used to replace the web access password with a new one (8 to 10 characters) of your choice. The default password is Admin123.



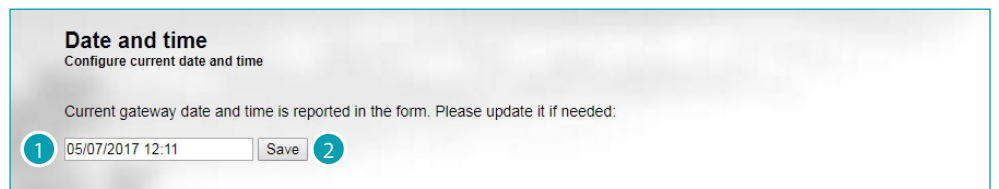
- 1 enter the new password
- 2 re-enter it for confirmation
- 3 click to save

Data/Language

This page can be used to set the date/time and the language of the system and of the web pages.



Set the date and time manually.

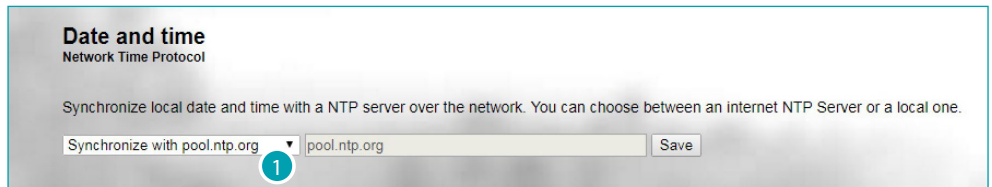


- 1 enter the correct date and time
- 2 click to save

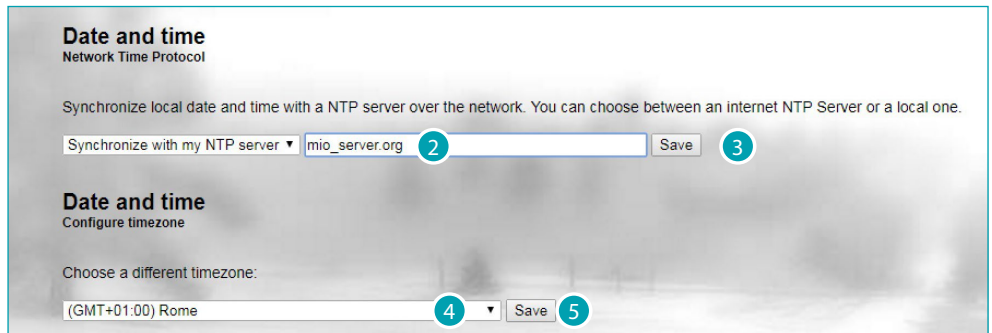
Set the automatic date and time

You can also set the date and time updated automatically by an NTP server. The Network Time Protocol (NTP) is a protocol to synchronise the system watches automatically, taking the correct data from the Internet.

Note: the driver manager has always the slave clock function inside the SCS system.



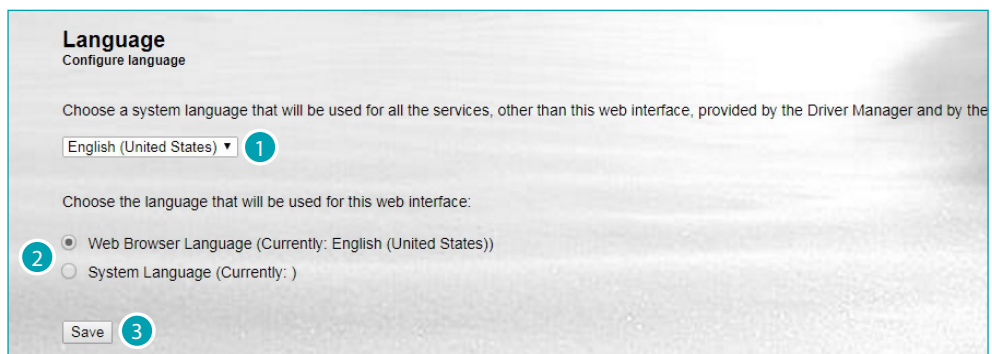
1 You can select a different NTP server from the default server



- 2 enter the server address
- 3 click to save
- 4 select the right zone to identify the correct time zone
- 5 click to save

Set the language

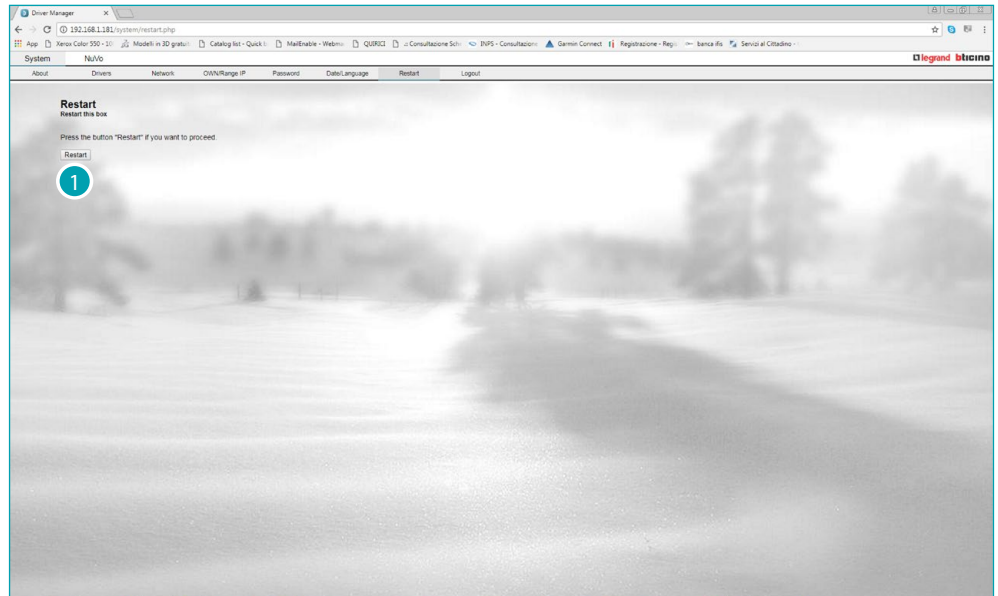
It is possible to select the driver language (when available) and the web interface language



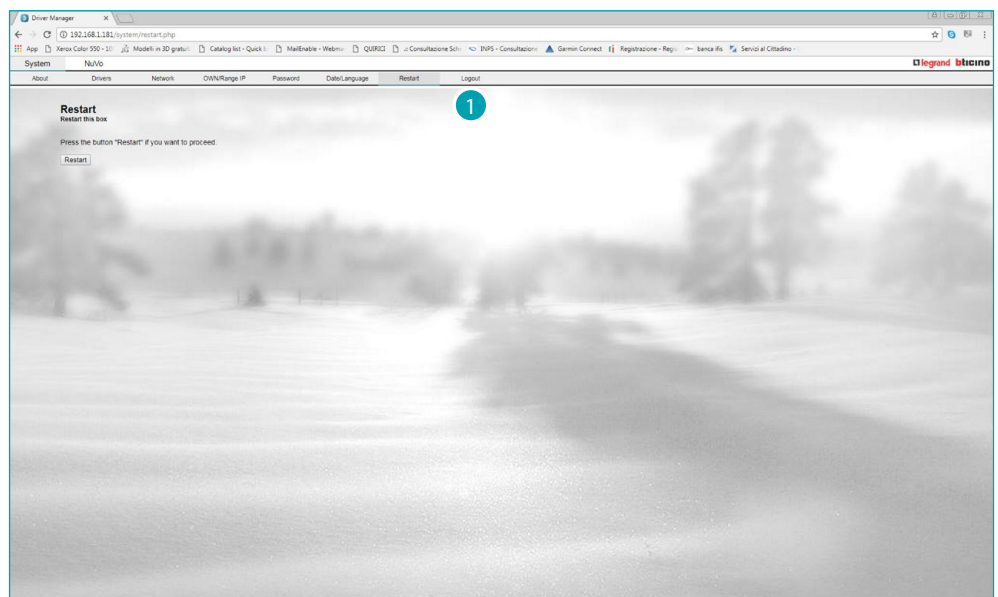
- 1 select the driver language
- 2 select if the web interface language will be the browser language or the system one.
- 3 click to save

Restart/Logout

This page can be used to restart the system



1 click to restart the system, after about two minutes you will be readdressed to the home page
or



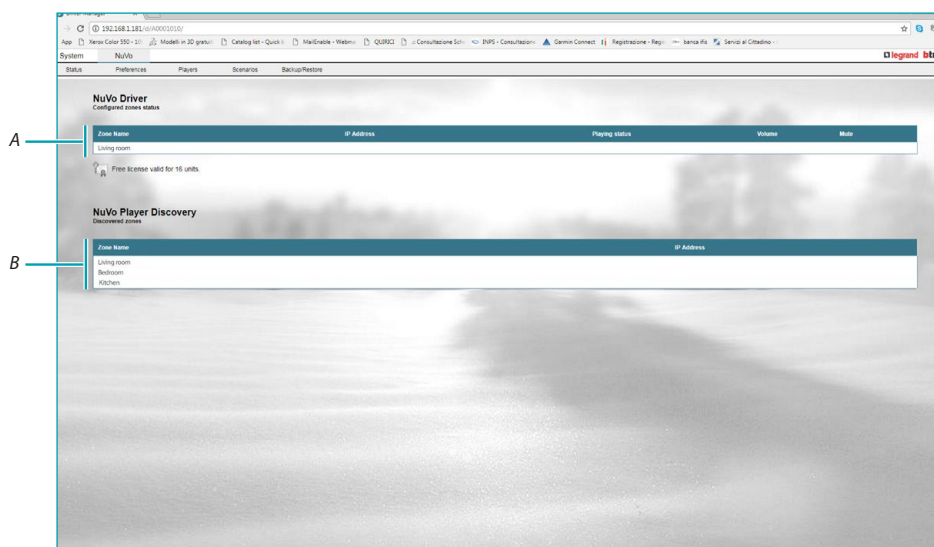
1 click to exit, to re-enter you will have to authenticate

Nuvo Driver

In this section you can manage the Nuvo audio functions associating them to the Myhome controls. You can also create scenarios that activate some actions of the Nuvo system.

Status

This page can be used to display the players/zones found within the same network as the drive manager and the configured ones, meaning those that have been associated to a MyHome control using the appropriate [procedure](#):



A Configured players/zones

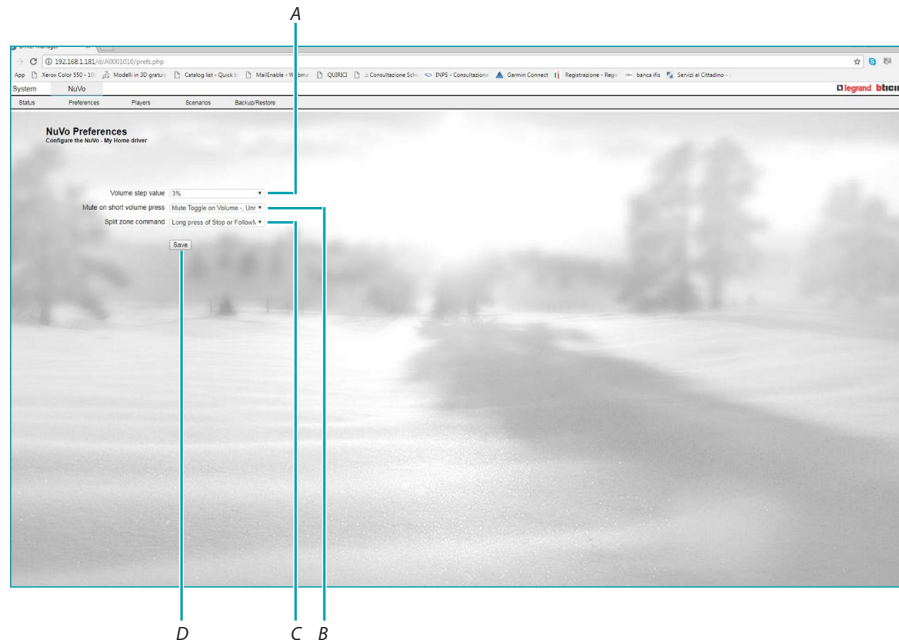
Name: Name of configured zone
 IP address: Player network address
 Status: player connection status
 Volume: actual volume of the player
 Mute: mute function status of the player

B Players/zones found in the same network of the driver manager

Name: name of zones found in the network
 Ip address: address of zones found

Preferences

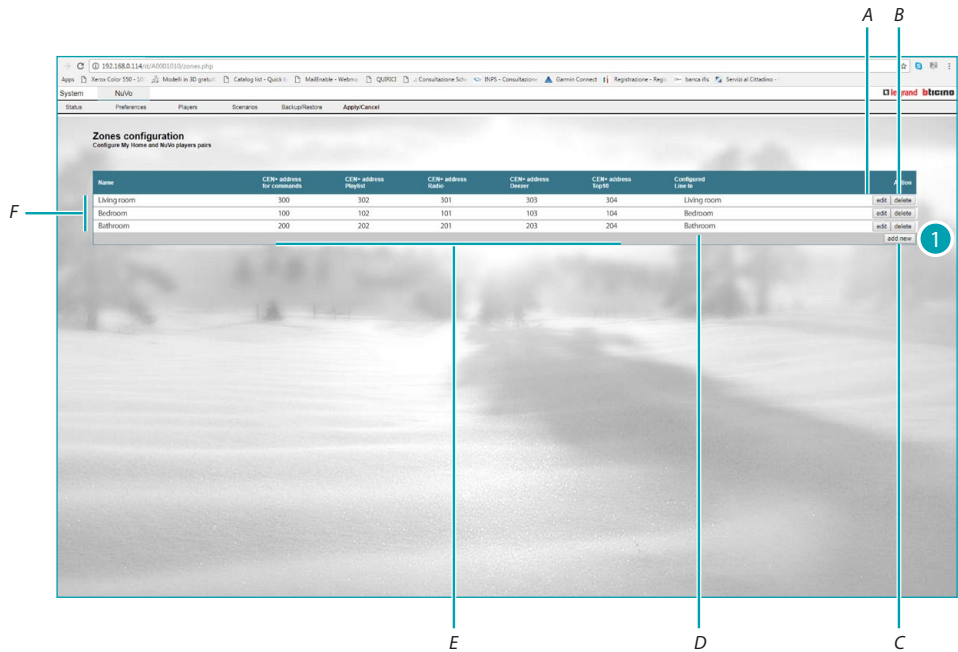
This page can be used to configure some general parameters to control the NUVO driver.



- A *Volume adjustment step: set the volume percentage variation (3,5,10%) obtained when operating the control.*
- B *Mute by quickly pressing the volume key: an extended pressure of the volume keys will adjust the volume in the normal way. By configuring this field, it will be possible to manage the mute function by quickly pressing the volume keys. In particular:*
 - 1st option: short pressures of the volume down (-) key in succession to enable and disable the mute function; short pressure of the volume up (+) key to only disable the mute function.
 - 2nd option: short pressure of the volume down (-) key to enable, and short pressure of the volume up (+) key to disable the mute function
 - 3rd option: the mute function is not managed using short pressures
- C *Zone split command: by configuring this field, it is possible to set different modes - using the Stop or Follow me keys -, for dividing the zones (previously combined using CEN controls 30 and 31 in the [appropriate page](#) or using the Nuvo Player App). In particular by setting:*
 - 1st option: extended pressure of the Stop or Follow me command to divide (ungroup) the zones
 - 2nd option: extended pressure of the Follow me command to divide (ungroup) the zones
 - 3rd option: extended pressure of the Stop command to divide (ungroup) the zones
 - 4th option: the zone dividing function is not managed
- D *save the la configuration set*

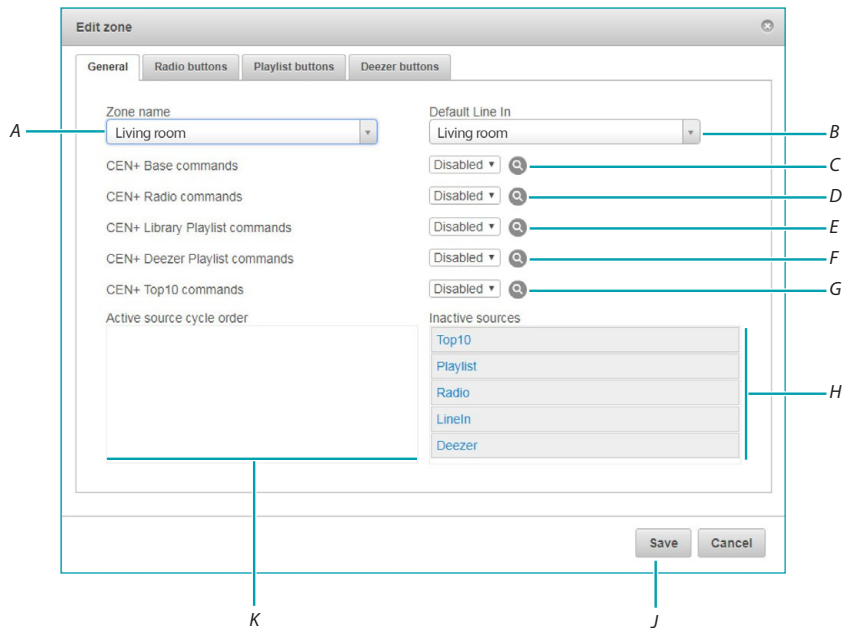
Players/Zones

This page can be used to create and configure a new zone, with the object of managing the sound system through the various functions that by using controls configured in PLUS programmed Scenario mode give the possibility of enabling audio functions, directly play back radio station broadcasts, playlists and top 10 contents.

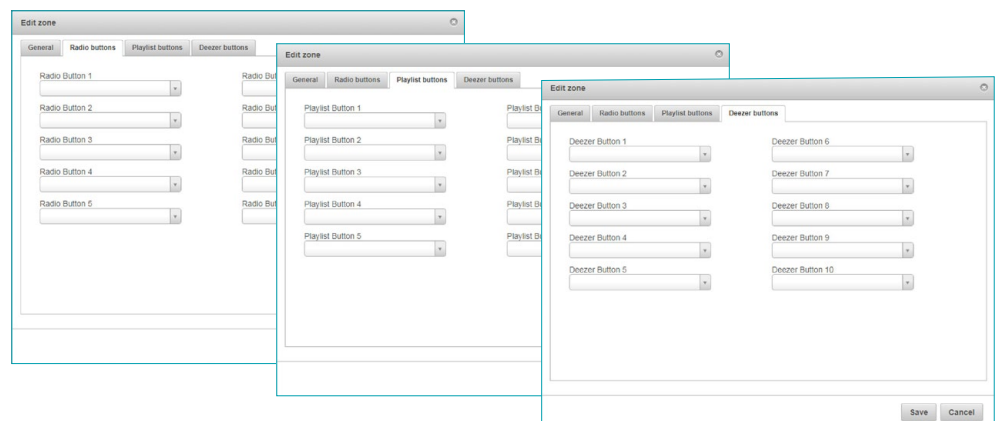


- A Edit zone, open the panel to configure the functions
- B Delete zone
- C Add a new zone, open the panel to configure the functions
- D Display which zone (device connected to the "line in" input) is used as source
- E Display which functions are configured, and the number of the PLUS programmed Scenario control used for association with the MyHome pushbutton
- F List of configured zones

1 click add/edit to access the configuration panel



- A Zone name
 - B select if the device connected to the "line in" input of the player, or of other players, should be used.
 - C Basic controls: associate an audio function to a pushbutton on the system (appropriately configured in PLUS programmed Scenario mode).
 - D Direct radio access: associate the possibility of playing back up 10 Radio IPs (the radio station list can be configured in the appropriate section) to a pushbutton on the system (appropriately configured in PLUS programmed Scenario mode).
 - E Direct playlist access: associate the possibility of playing back up 10 playlists in the Nuvo system (the playlist list can be configured in the appropriate section) to a pushbutton on the system (appropriately configured in PLUS programmed Scenario mode).
 - F Direct Deezer (Nuvo player APP) access: associate the possibility of playing back up 10 Deezer playlists (the playlist list can be configured in the appropriate section) to a pushbutton on the system (appropriately configured in PLUS programmed Scenario mode).
 - G Direct Top 10 (Nuvo player APP) access: associate the possibility of playing back the Top 10 contents (configurable using the Nuvo player App) to a pushbutton on the system (appropriately configured in PLUS programmed Scenario mode).
 - H sources available: to create the source list for the cycle source control
 - J Save the zone
 - K Zone where to drag the available sources to create the source list for the cycle control
- For the controls in items d, e and f, select the contents in the appropriate panels

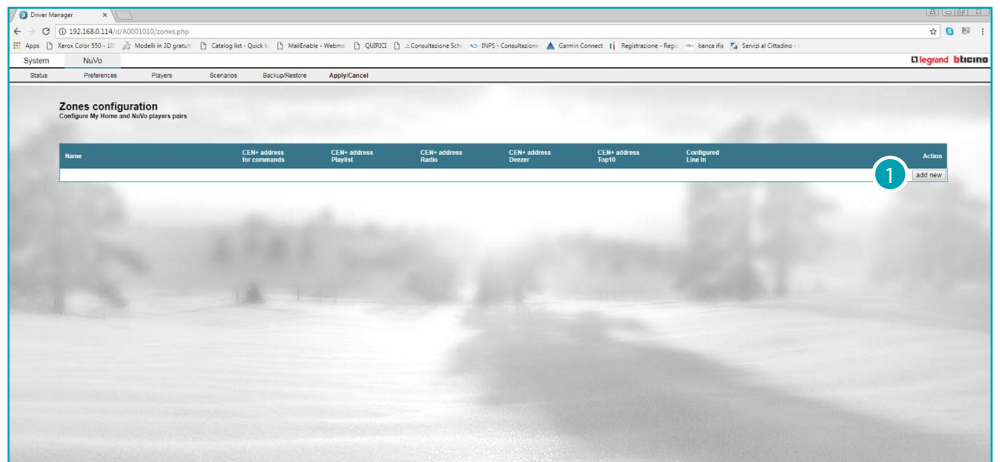


Add and configure a zone

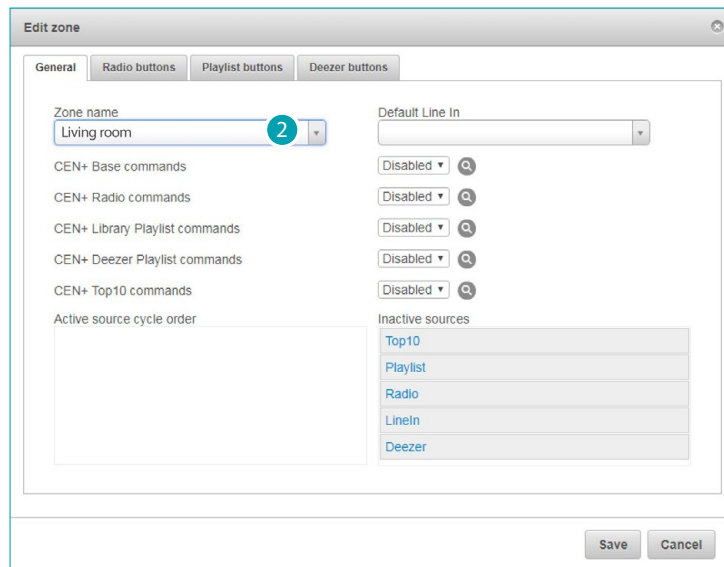
Depending on the type of player installed in the system, it is possible to control one or more zones. The zones must have been created previously using the Nuvo player App.

This procedure example will show how to create a "Living room" zone (player and living room speakers connected) managed by appropriately configured controls; in particular

- 1 control h4652/2 to enable and disable the sound source and turn the volume up or down, source change (from preset source list), and track change (PLUS 300 programmed scenario)
- 1 control h4652/2 to directly enable 2 radio stations and 2 playlists (PLUS 301 and 302 programmed scenario)
- 1 control h4652/2 to directly enable 2 Deezer playlists and 2 Top ten contents (PLUS 303 and 304 programmed scenario)



- 1 click to add a zone



- 2 select the zone to be controlled among those available

Basic controls

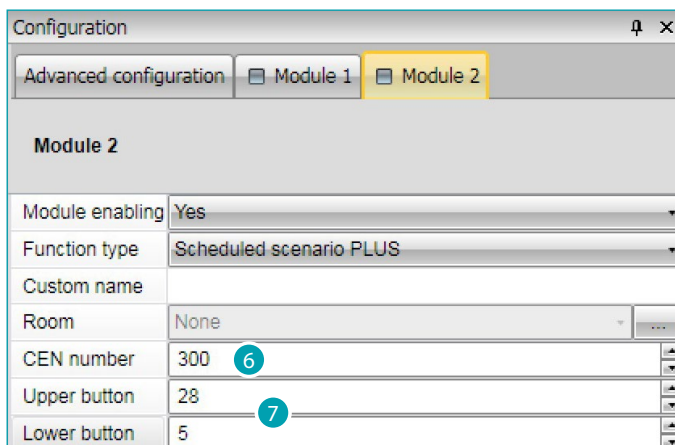
Now define which functions will be enabled when pressing the system control pushbutton. For this, it will be necessary to assign beforehand to the system control a PLUS programmed Scenario address to carry out the various functions

Using the MyHome_Suite software, configure the control (for example I4652/2), defining:

Configuration	
Advanced configuration <input checked="" type="checkbox"/> Module 1 <input type="checkbox"/> Module 2	
Module 1	
Module enabling	Yes
Function type	Scheduled scenario PLUS
Custom name	
Room	None
CEN number	300
Upper button	23
Lower button	24

- 3 the control so that it performs the function of PLUS programmed scenario
- 4 the PLUS programmed scenario number to assign to the control (1-2047)
- 5 the number corresponding to the PLUS programmed scenario pushbutton (obtained from the function table) to associate to the upper/lower key of module 1 of the device

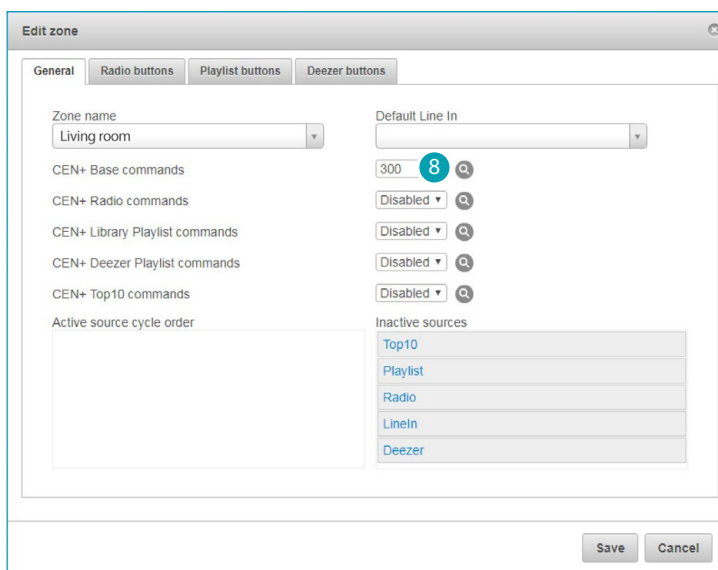
PUSHBUTTON	DESCRIPTION	NOTES
1	Play	Simple playing, if the player queue is empty, the first Source Cycle option starts.
2	Stop	Stop (or pause) (zone disconnection, keeping pressed for a long time)
3	Volume Up	Removes the "Mute" option on pressing once, if enabled during the global configuration,
4	Volume Down	Mutes or enables the "Mute" option" on pressing once, if enabled during the global configuration,
5	Next item on queue	Next item on queue
6	Previous item on queue	Previous item on queue
7	Mute toggle	Cyclic mute key
8	Mute	Mute
9	Unmute	Unmute
10	Volume 0%	
11	Volume 10%	
12	Volume 20%	
13	Volume 30%	
14	Volume 40%	
15	Volume 50%	
16	Volume 60%	
17	Volume 70%	
18	Volume 80%	
19	Volume 90%	
20	Volume 100%	
21	Play	Advanced playing, if the player queue is empty, the first Source Cycle option starts, otherwise it performs the next command. Source Cycle keeping pressed.
23	ON + Volume UP	ON with a short press – Volume UP with a long press
24	OFF + Volume DOWN	OFF with a short press – Volume DOWN with a long press
27	Follow Me	Keep the source
28	Source Cycle	Source Cycle
29	Line In	Line input
30	Combine zones	
31	Divide zones	



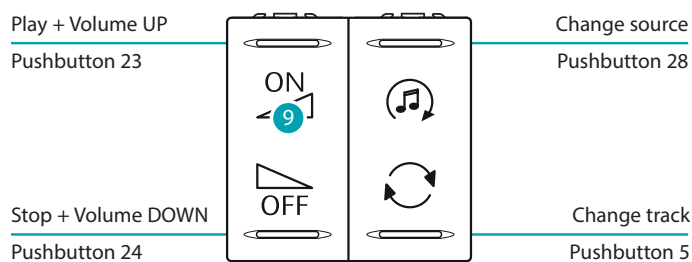
Repeat the operations also for module 2, setting:

- 6 the same PLUS programmed scenario number
- 7 the numbers corresponding to other functions to associate to the upper/lower pushbutton of module 2

The CEN + (PLUS programmed scenario) number can now be associated to the basic control function

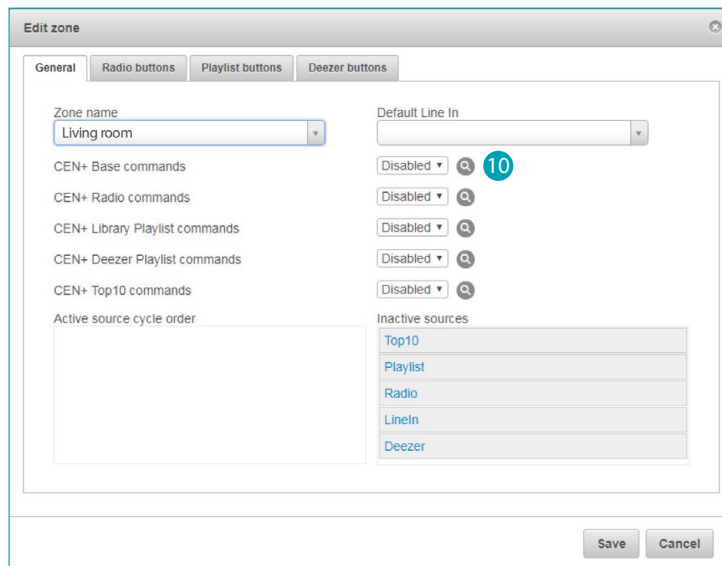


- 8 select the PLUS programmed scenario control previously set in MyHome_Suite

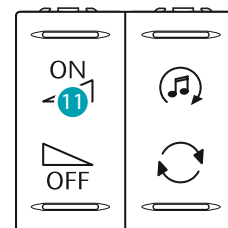
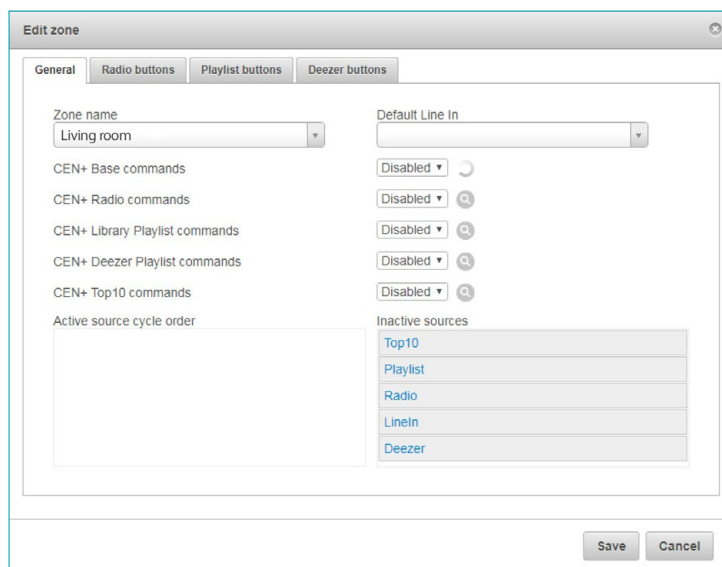


- 9 After [saving the zone](#) it is possible to use the system control for some basic functions

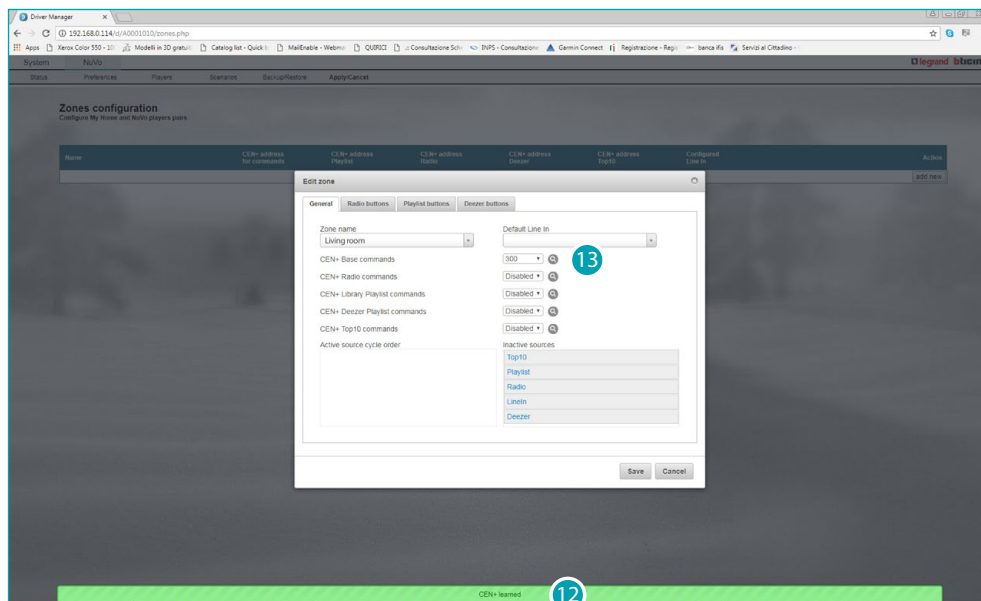
If the control is already configured with a PLUS programmed Scenario address, this can be found using the search function:



10 click start to start the automatic control association procedure



11 click any key of the control already configured within 10 seconds

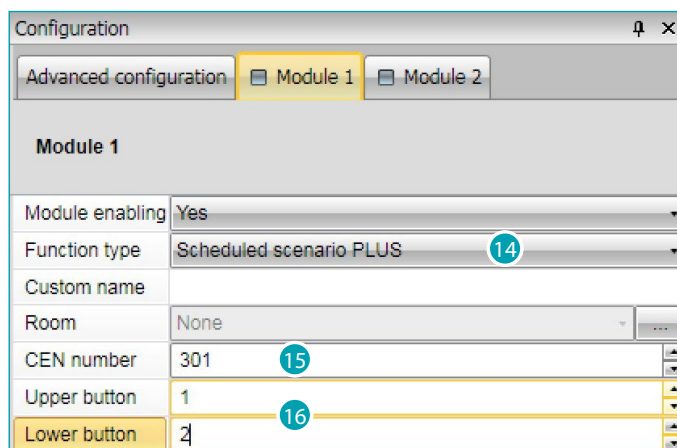


12 a message will confirm that the procedure has been successful and

13 the CEN number will appear in the appropriate field

Radio direct access function

This function gives the possibility of associating a radio station to each pushbutton of the control device

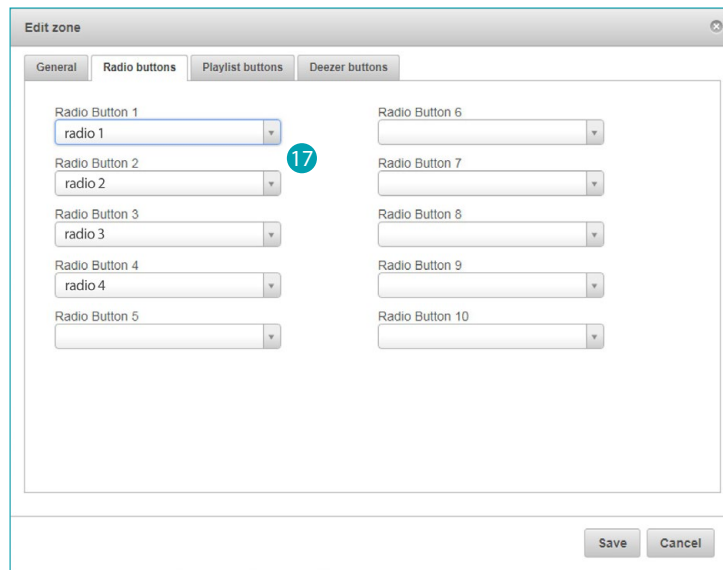


Using the MyHome_Suite software, configure the control (for example L4652/2), defining:

14 the control so that it performs the function of PLUS programmed scenario

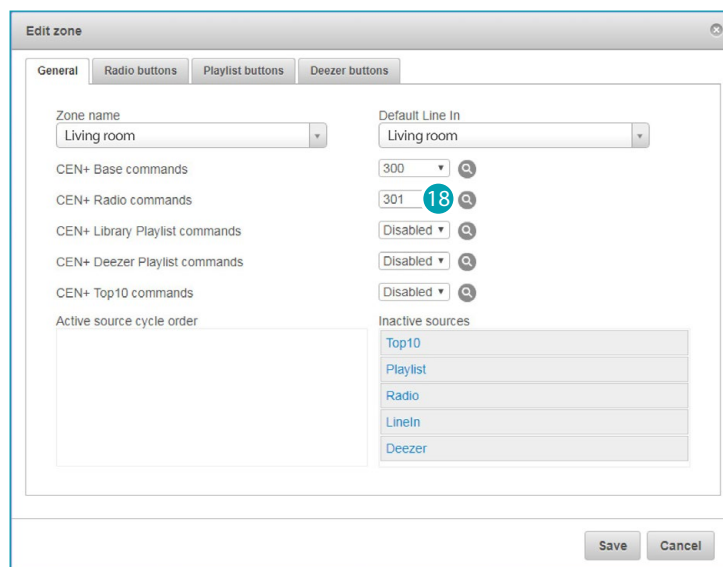
15 the PLUS programmed scenario number to assign to the control

16 the number of the pushbutton corresponding to the radio station to associate to the upper/lower key of module 1 of the device

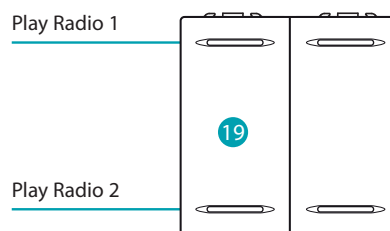


17 in the radio pushbutton page, define the radio stations (only if previously added to the Tunein>favorite section using the Nuvo player App) available for activation when the control key is pressed

The PLUS programmed Scenario number can now be associated to the radio direct Access function



18 select the PLUS programmed Scenario mode control previously set in MyHome_Suite

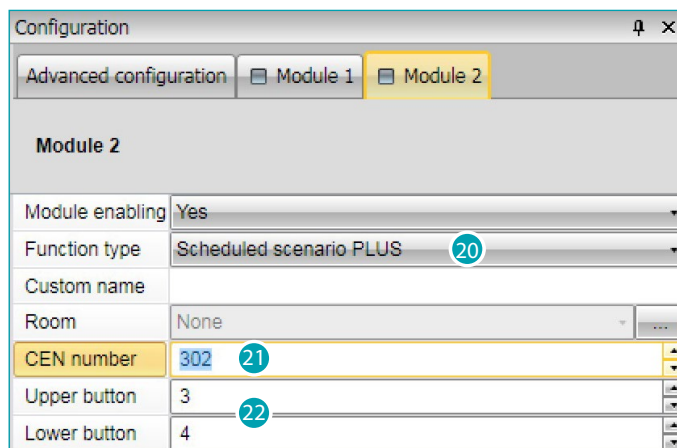


19 After [saving the zone](#) it is possible to use the system control to directly activate the radio stations

Playlist direct access function

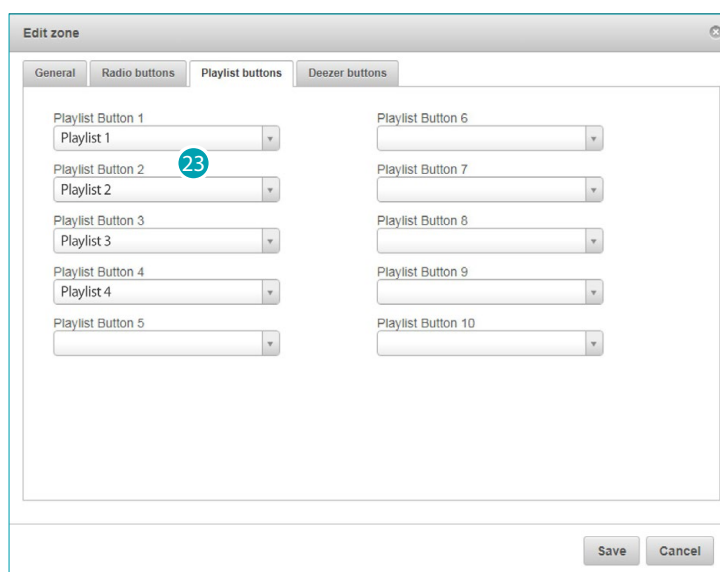
This function gives the possibility of associating a playlist of files stored in the Nuvo system to each pushbutton of the control device.

To use this function, it will be necessary to create playlists using appropriate software (e.g. Windows media player, iTunes, etc.). Once created, they can be shared through the network using Nuvo music share, or saved on a storage support (e.g. USB key), and connected to the player USB input



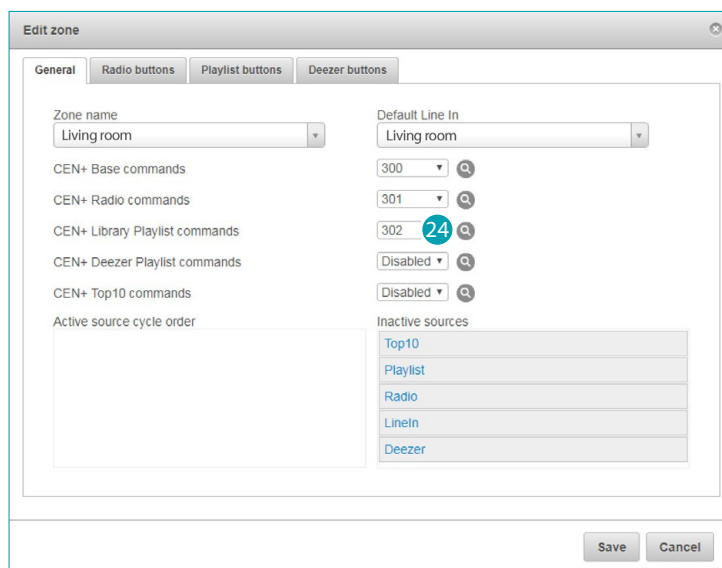
Using the MyHome_Suite software, configure module 2 of the control already previously used for the radio stations, but setting a different PLUS programmed Scenario address, defining:

- 20 the control so that it performs the function of PLUS programmed scenario
- 21 the PLUS programmed scenario number to assign to the control
- 22 the number of the pushbutton corresponding to the playlist to associate to the upper/lower key of module 2 of the device

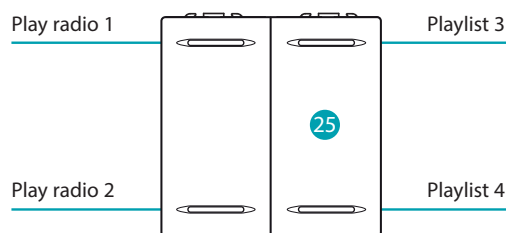


- 23 in the playlist page, define the playlists available in the Nuvo system, for activation when the control key is pressed

The PLUS programmed Scenario address can now be associated to the playlist direct Access function



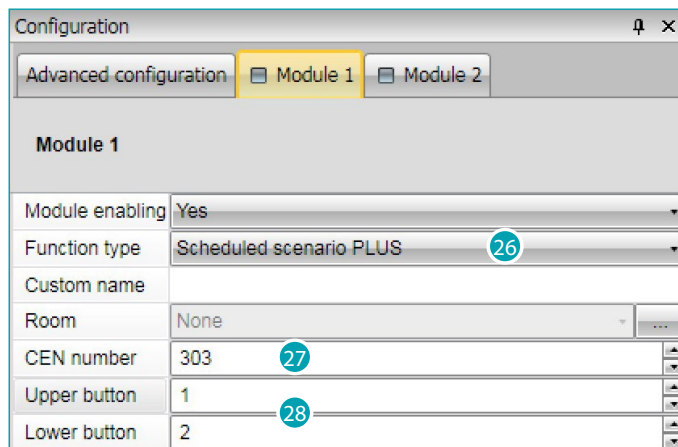
24 select the PLUS programmed Scenario mode control previously set in MyHome_Suite



25 After [saving the zone](#) it is possible to use the system control to directly activate the playlists

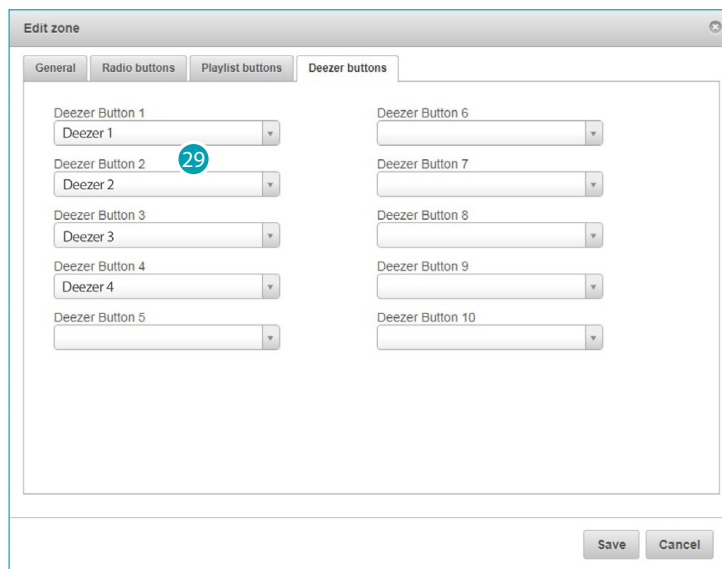
Deezer playlist direct access function

This function gives the possibility of associating to each pushbutton of the control device a DEEZER playlist (streaming music service requiring registration and creation of an account).



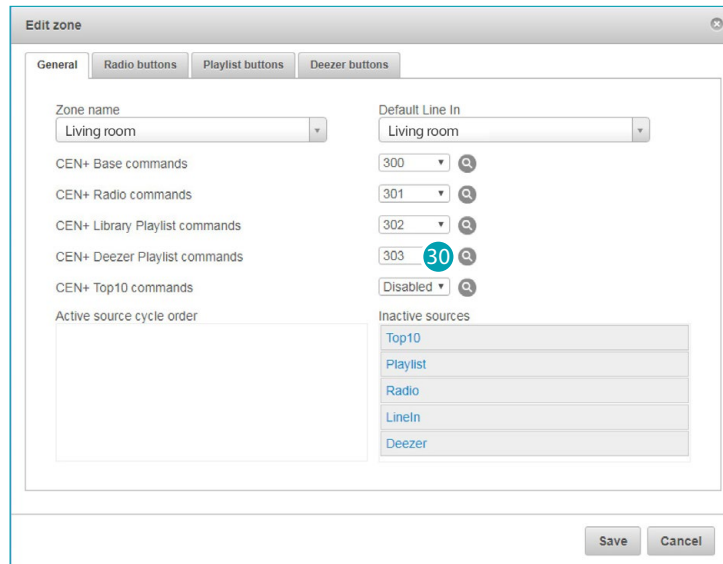
Using the MyHome_Suite software, configure the control (for example I4652/2), defining:

- 26 the control so that it performs the function of PLUS programmed scenario
- 27 the PLUS programmed scenario number to assign to the control
- 28 the number of the pushbutton corresponding to the Deezer playlist to associate to the upper/lower key of module 1 of the device

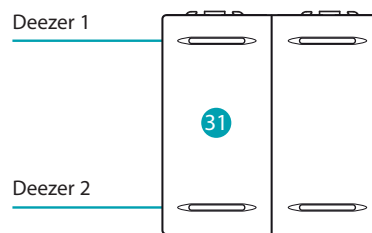


- 29 in the Deezer playlist page, define the playlists available in the Deezer service, for activation when the control key is pressed

The PLUS programmed Scenario address can now be associated to the Deezer playlist direct Access function



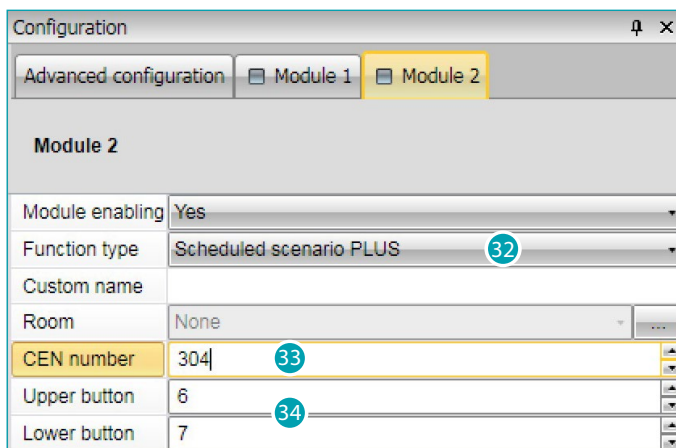
30 select the PLUS programmed Scenario mode control previously set in MyHome_Suite



31 After [saving the zone](#) it is possible to use the system control to directly activate the playlists

Top 10 direct access function

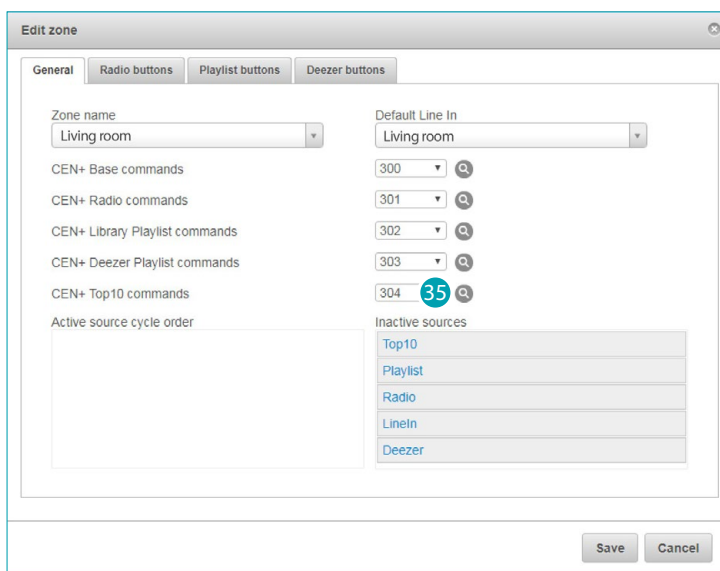
This function gives the possibility of associating the playback of the contents of the Top 10 of the Nuvo App to a pushbutton of the control device.



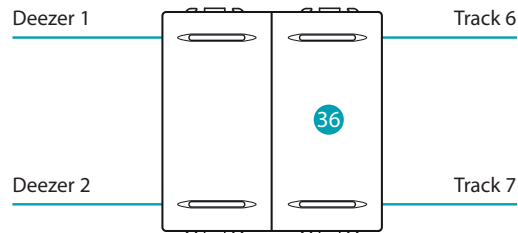
Using the MyHome_Suite software, configure module 2 of the control already previously used for the Deezer playlists, but setting a different PLUS programmed Scenario address, defining:

- 32 the control so that it performs the function of PLUS programmed scenario
- 33 the number 9 to assign to the control
- 34 the number of the pushbutton corresponding to the Top ten position of the relevant content, to associate to the upper/lower key of module 2 of the device

The PLUS programmed Scenario address can now be associated to the Top 10 direct Access function



- 35 select the PLUS programmed Scenario mode control previously set in MyHome_Suite

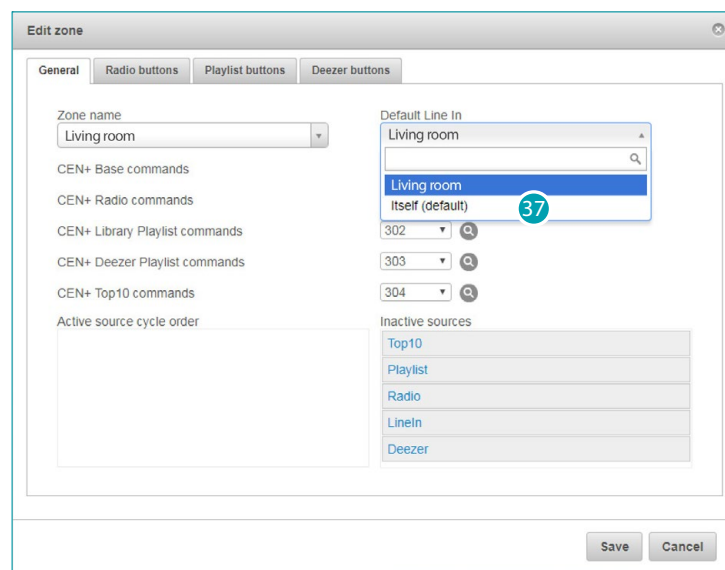


36 After [saving the zone](#) it is possible to use the system control to directly play back the contents of the Top ten

To complete the zone configuration, it is necessary to set the default "Line in" and the source cycling order

Default Line In

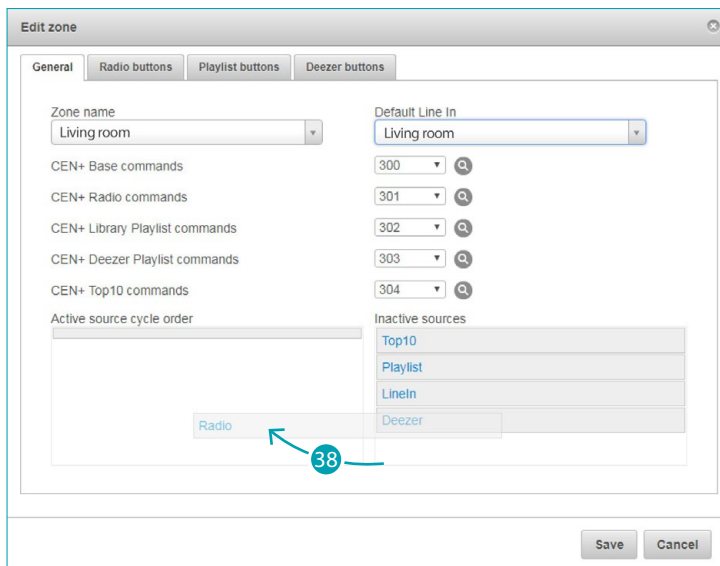
This field can be used to select the default "Line in" source, which means select if the device connected to the "Line in" input of the player, or of other players, should be used.



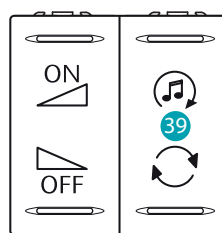
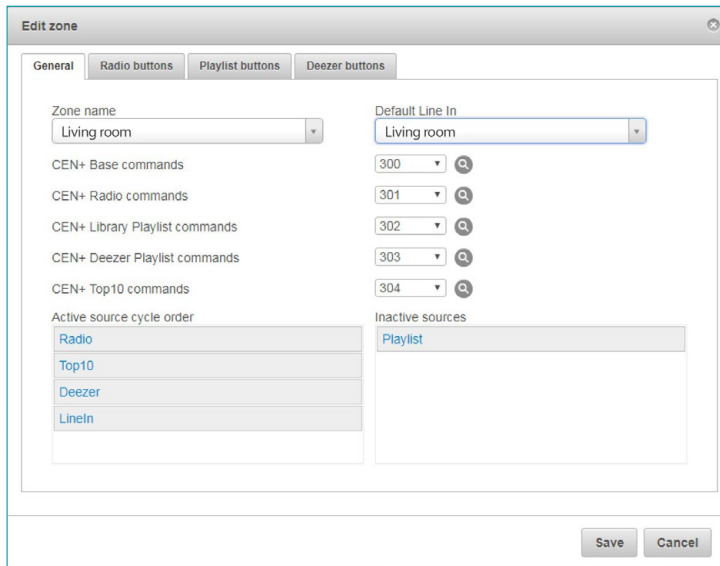
37 select "itself" to set the same player as source, or select the desired player.

Source order of the source cycle

This field can be used to create a list of sources that will be used by the "cycle source" control



38 drag the sources in the left field to set the ones that will be included in the source list, and the cycling order

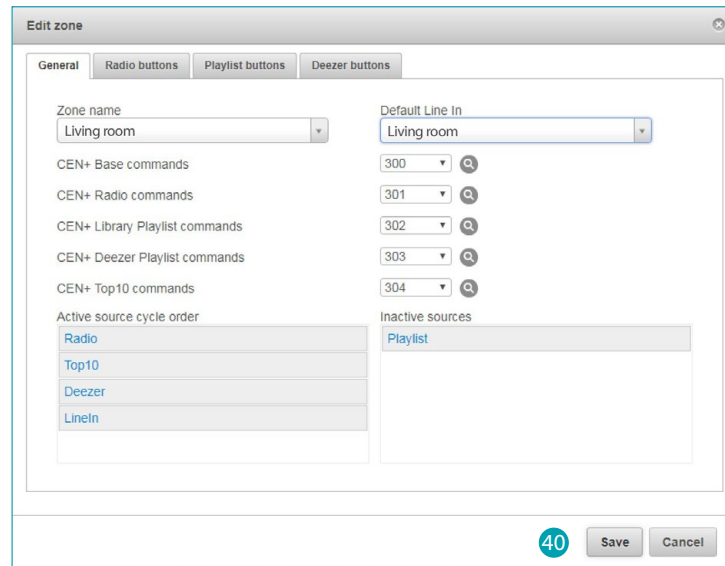


Change source
Pushbutton 28

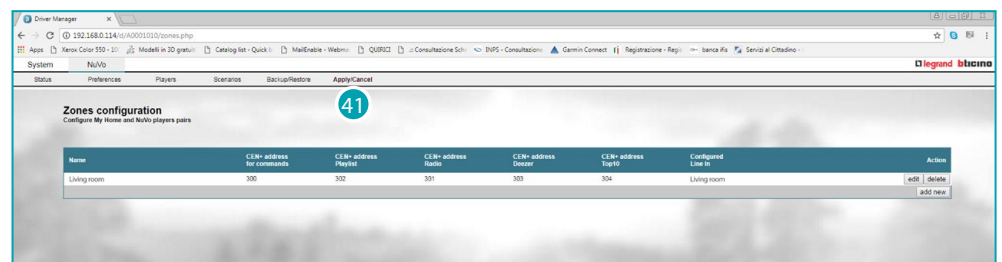
39 After [saving the zone](#), press the cycle key of the control appropriately configured as basic control to select the radio stations and then the top 10 and so on, following the list set.

Save a zone

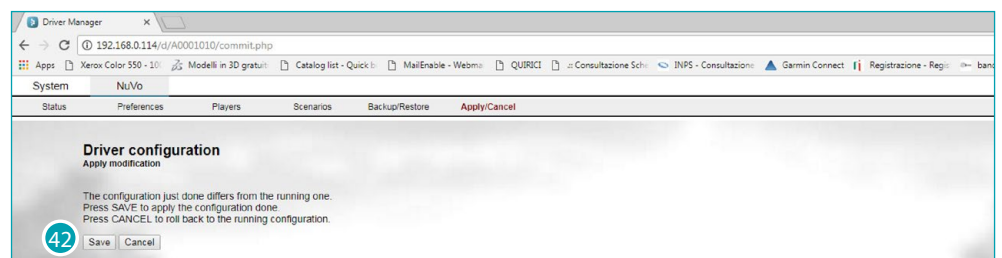
Now save the completed configuration.



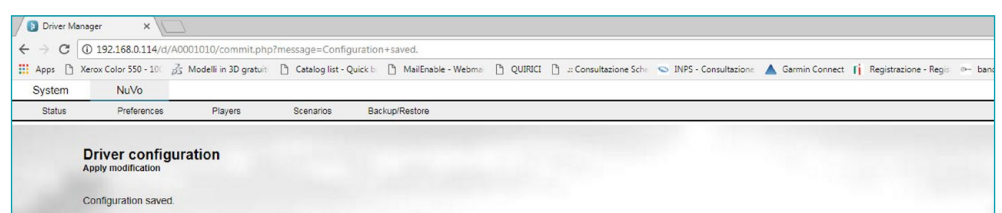
40 touch to save the zone



41 after a few seconds the apply/cancel flashing pushbuttons appear; click the first one to apply the configuration to the zone

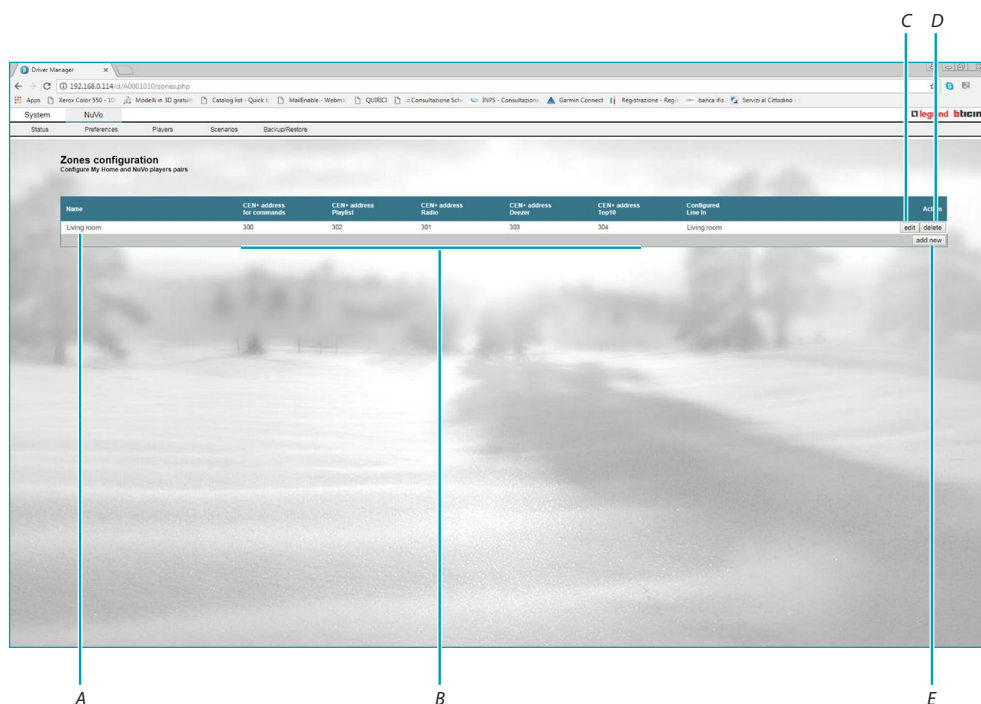


42 click to confirm, the configuration being used will be overwritten



A message indicates that the zone has been saved and the configuration sent to the player

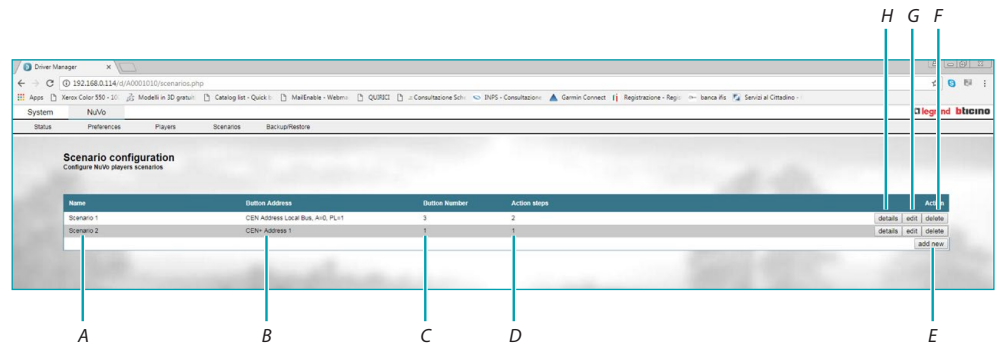
The zone is now displayed in the player page, where it is possible to display the controls of the PLUS programmed scenario (CEN+) set, and modify and/or delete the configuration



- A zone name
- B configuration
- C edit configuration
- D delete configuration
- E add zone configuration

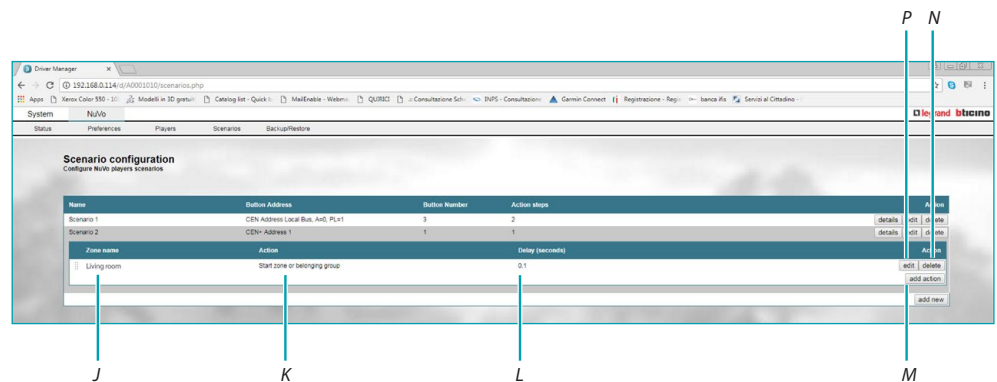
Scenarios

This page can be used to associate a Nuvo system action to a MyHome event. The event that can be associated as start condition can be the recalling of a scenario saved in a Scenario module, or the pressure of a key of a programmed Scenario, or PLUS programmed Scenario (CEN, CEN+)



- A Scenario name
- B Address of the start condition (Scenario recall, or programmed Scenario control, or PLUS programmed Scenario (CEN, CEN+) control)
- C Number of the Scenario saved in a scenario module, or pushbutton number of the programmed Scenario control or PLUS programmed Scenario (CEN, CEN+)
- D Number of actions that will be performed
- E Add a new scenario
- F Delete a scenario
- G Edit an existing scenario
- H Display the section that can be used to configure a Nuvo action to performed after the execution of the scenario

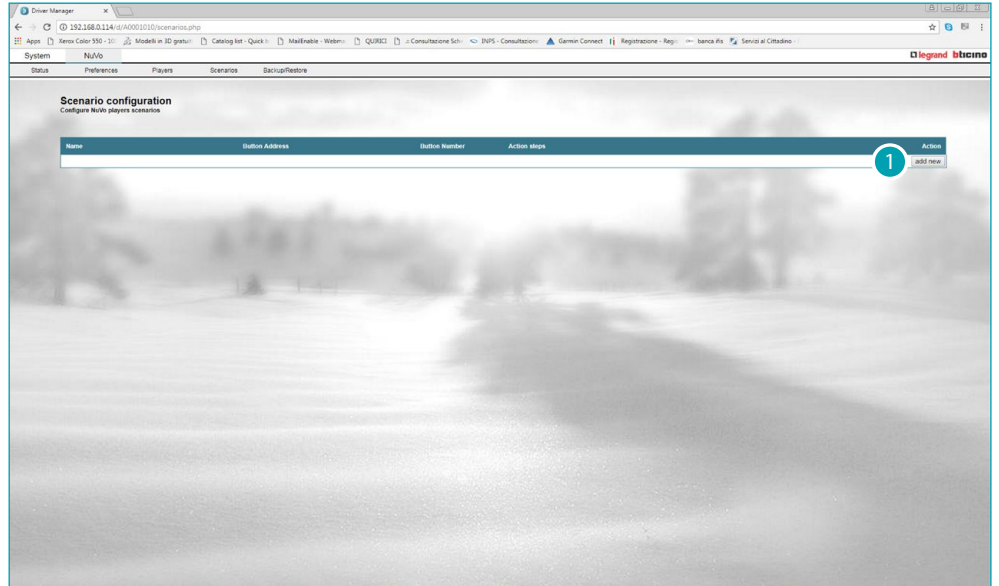
Action section (Details key)



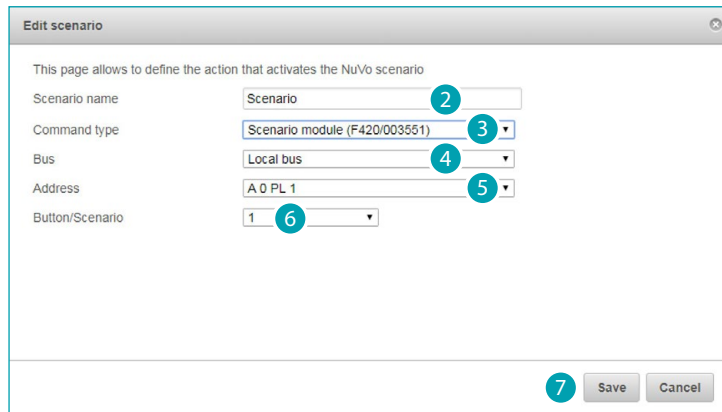
- J Player that performs the action
- K Nuvo action to be performed
- L Delay between an action and the next
- M Add a new action
- N Delete action
- P Edit action

Create a scenario

In order to create a scenario, it is necessary to define the Scenario control to associate (Add Scenario), and then define the actions that must be performed by the player (Scenario details).

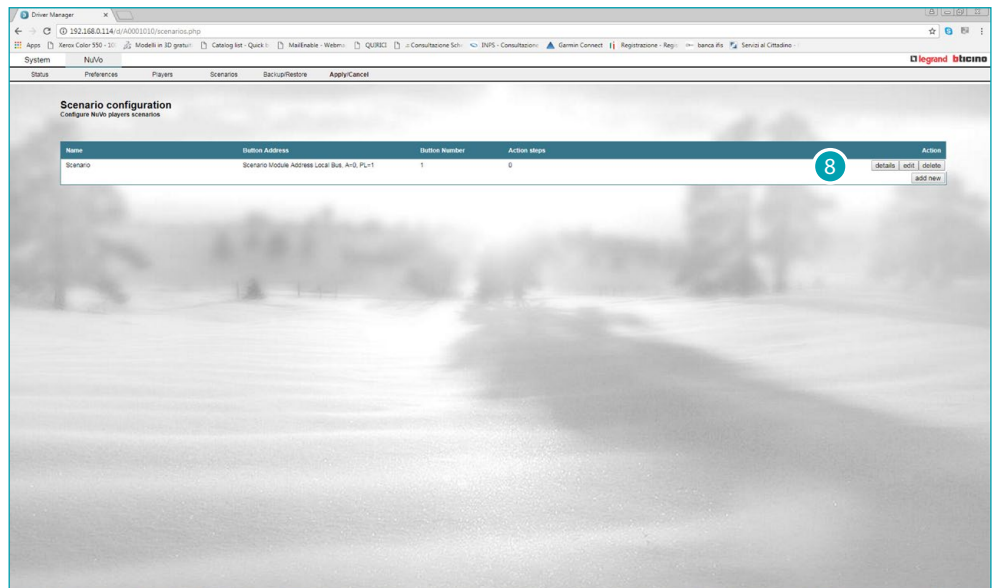


1 Click to create a scenario

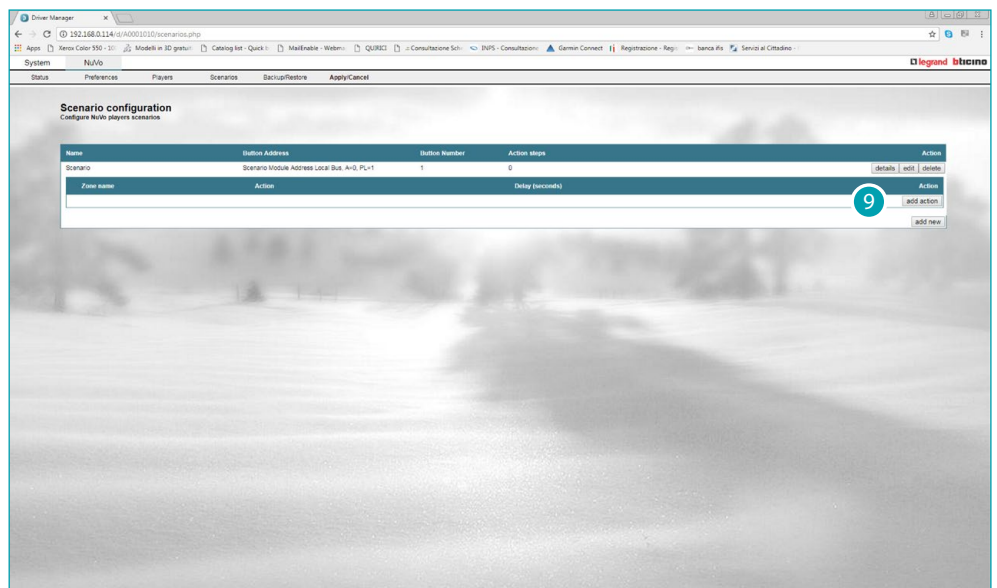


- 2 Enter a name
- 3 Select the type of control among:
 Scenario module: existing scenario saved in a scenario module (F420)
 CEN Scenario: Scenario that can be recalled by a control configured in programmed Scenario mode using MyHome_Suite, or CEN mode in physical configuration
 PLUS programmed Scenario: Scenario that can be recalled by a control configured in PLUS programmed Scenario mode
- 4 Select on which section the BUS is wired
- 5 Select the Scenario module / programmed Scenario control or PLUS programmed Scenario (CEN, CEN+) control
- 6 Select the number of the pushbutton of the Scenario module / programmed Scenario control or PLUS programmed Scenario (CEN, CEN+) control
- 7 click to save

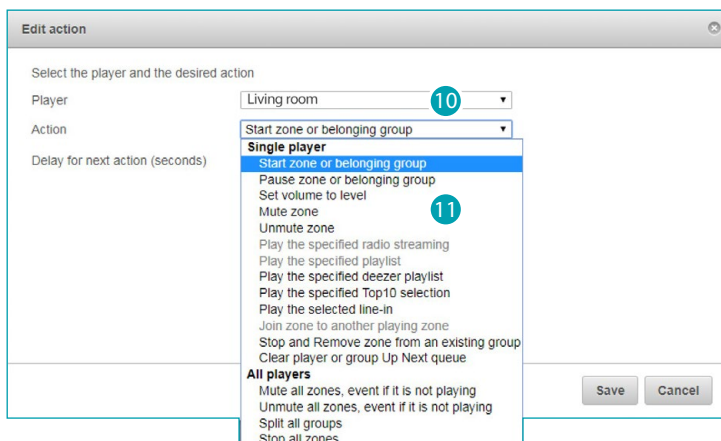
it is now possible to associate an action to the control



8 Click "Details" to open the Action section

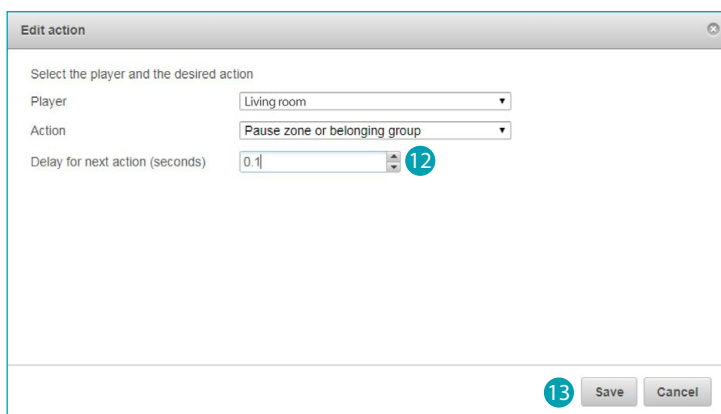


9 Click to add an action



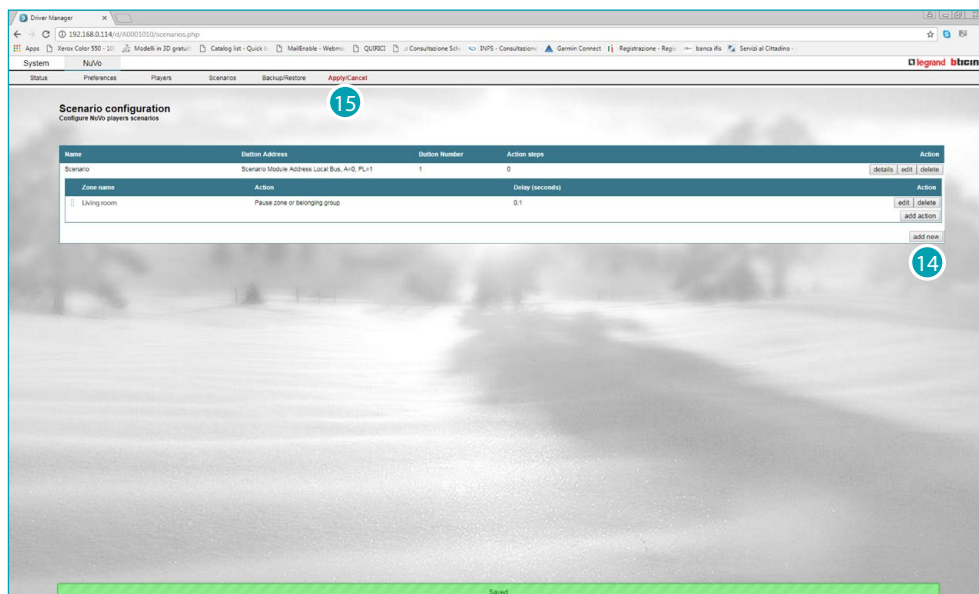
10 Select the player that performs the action

11 select control to perform for the selected player, or for all the players



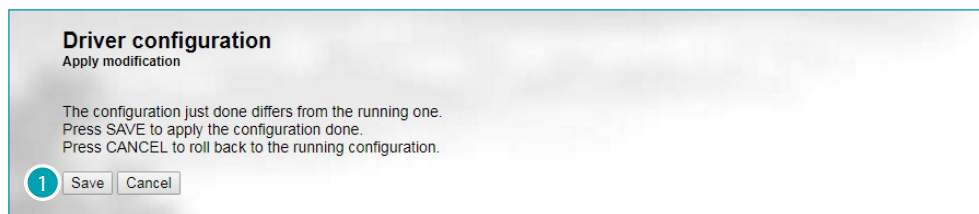
12 Enter a delay between this action and the next

13 click to save

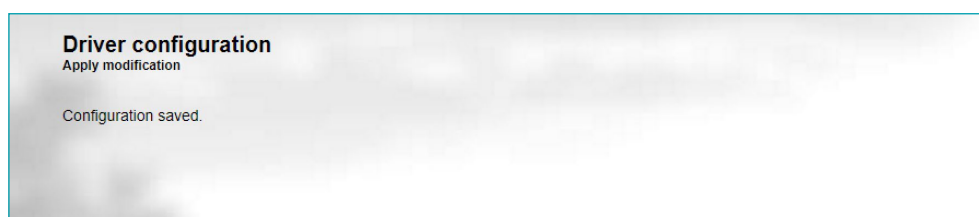


14 now it is possible to add another action and/or

15 save the performed configuration



16 click to confirm, the configuration being used will be overwritten

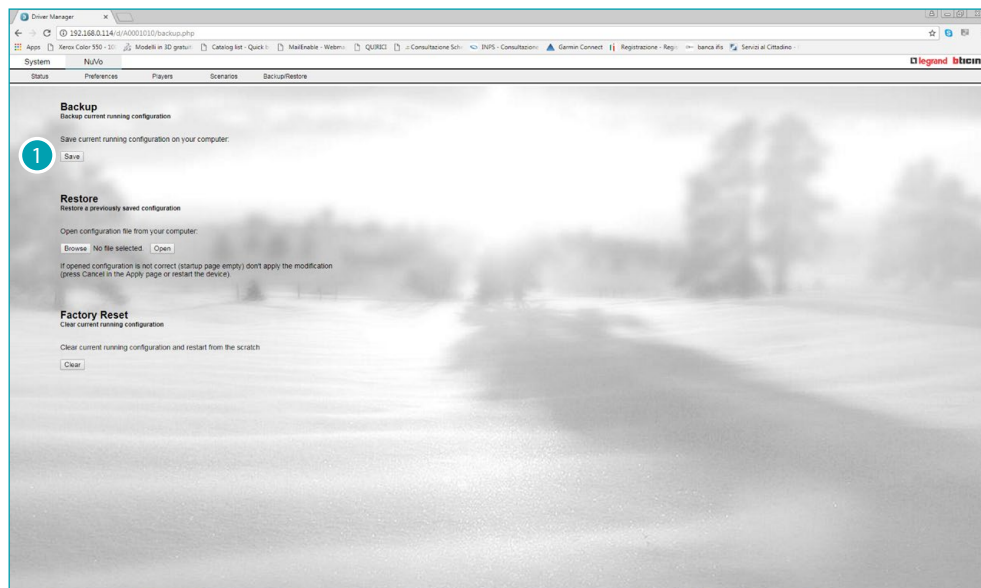


A message indicates that the scenario has been saved

Backup/restore

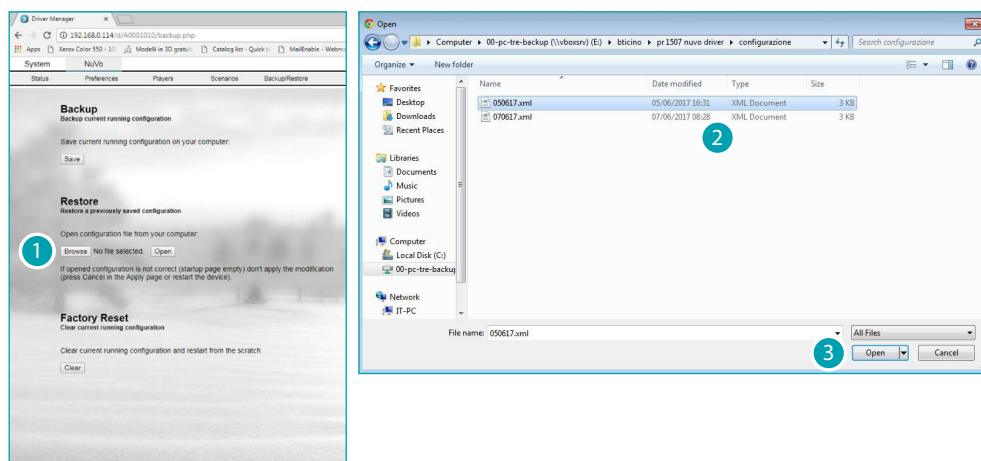
This page can be used to backup the completed configuration, or restore it at a later date. It is also possible to delete the existing configuration and reinstate the factory settings.

Save the configuration

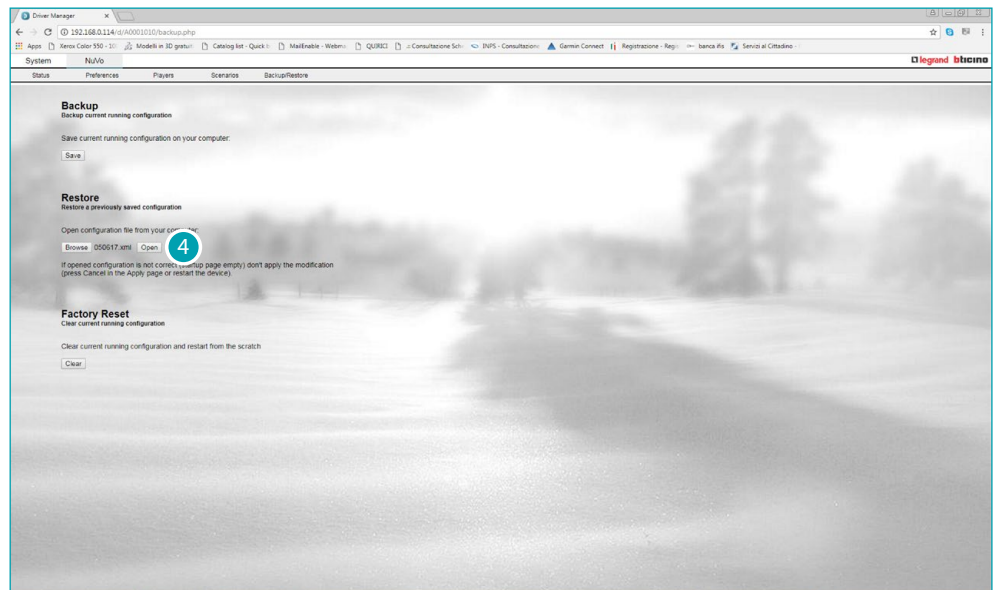


- 1 click to save the current configuration in a xml file on your pc

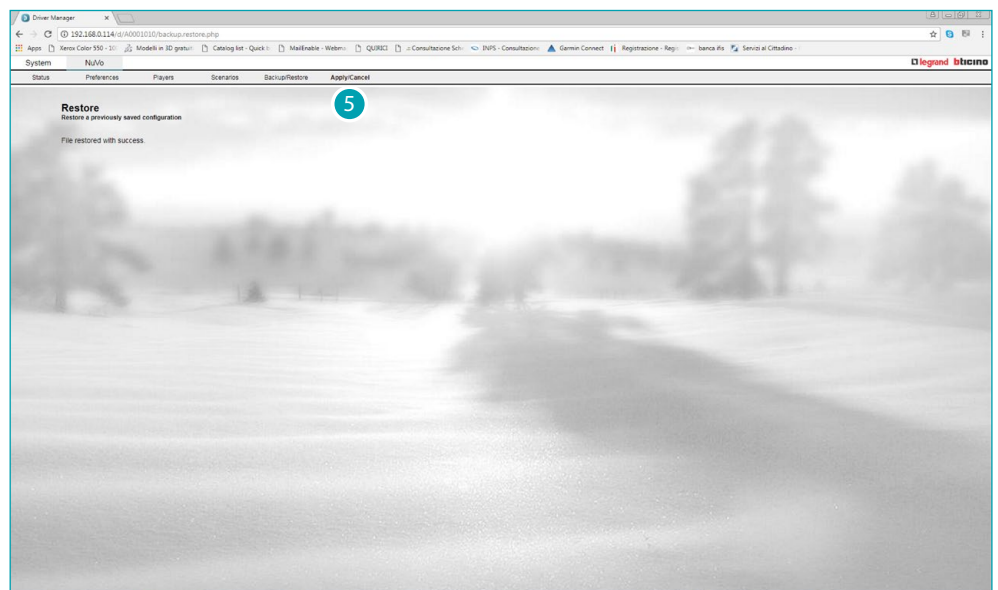
Restore a saved configuration



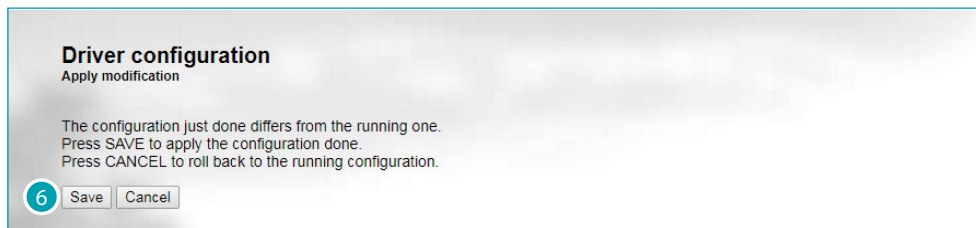
- 1 click to select on the pc the saved configuration file
- 2 select the file
- 3 click to confirm



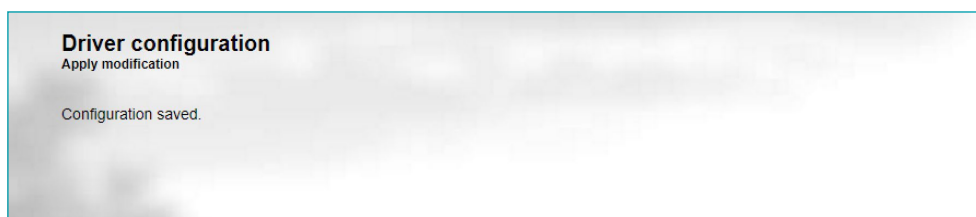
- 4 click to upload the configuration. If the driver page stays empty, it means that the configuration is not valid. In this case don't save the changes



- 5 click to open the configuration

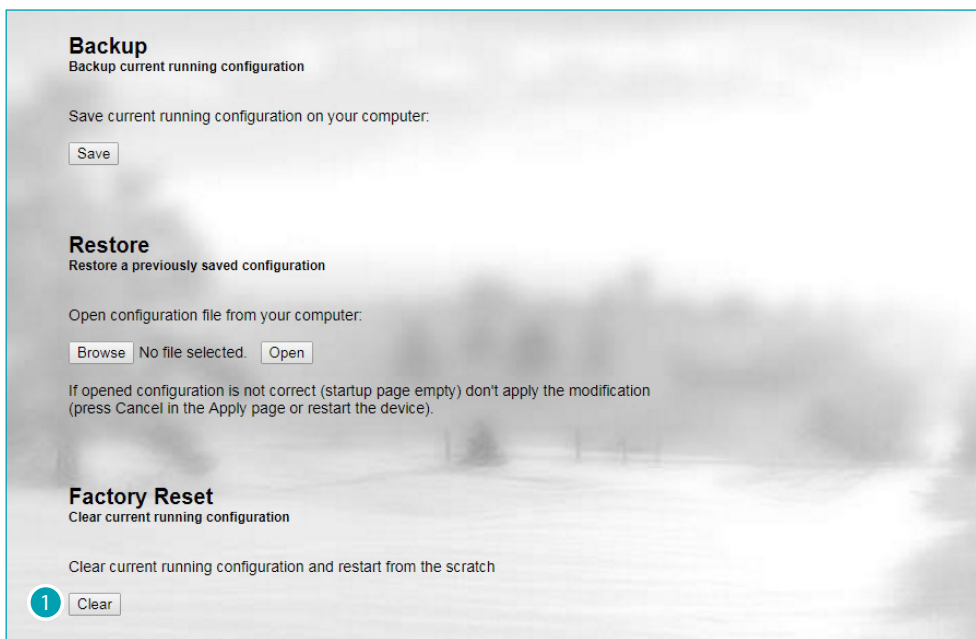


6 click to confirm, the configuration being used will be overwritten



A message indicates that the scenario has been saved

Restore the factory settings



1 click to delete the existing configuration and reinstate the factory settings

Legrand SNC
128, av. du Maréchal-de-Lattre-de-Tassigny
87045 Limoges Cedex - France
www.legrand.com

BTicino SpA
Viale Borri, 231
21100 Varese
www.bticino.com