

Contents

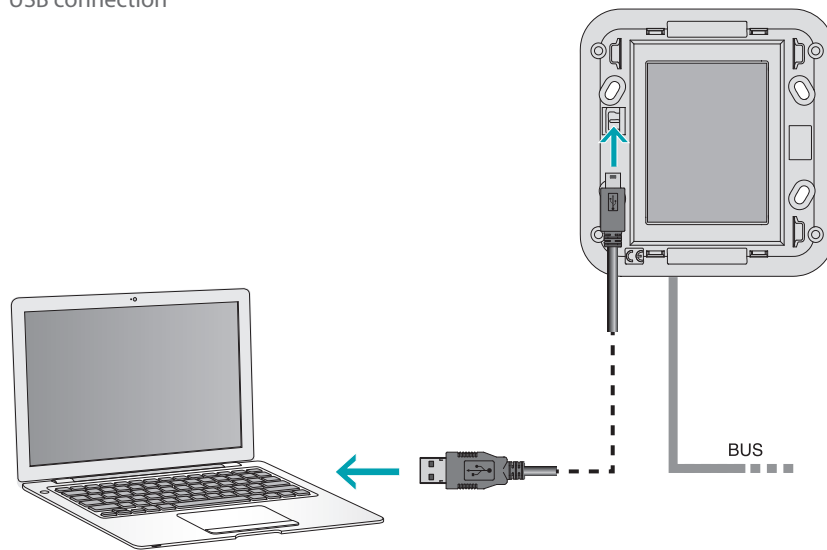
Start	4
Interaction with the device	4
Device configuration	5
Configured objects	7
Configuration Parameters	8
External Gateway	9
Home page	10
Project items	11
Sub-pages	12
Display	12
Property/Project	13
Common configurations	14
Time/Date/Temperature	15
Functions	16
Settings	16
Automation	21
Lighting	23
Burglar alarm	25
Temperature control	25
Video door entry system	37
Sound system	38
NuVo	42
NuVo and Sound System	42
Scenarios	43
Advanced and programmed scenarios	44
Energy management	46
Favorites page	52
Other settings	53
Economic evaluation setup	53
Other parameters	53

Start

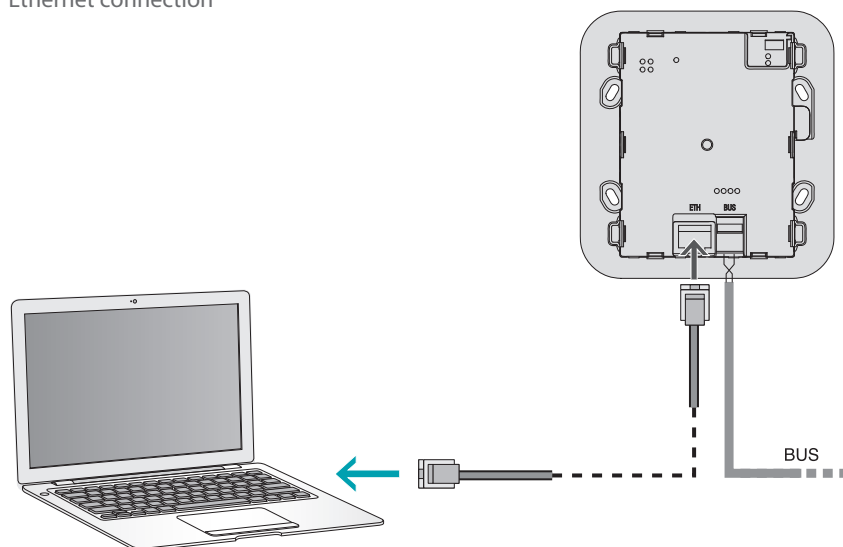
Interaction with the device

To [Send](#) or [Receive the Configuration](#), [Update the Firmware](#) and [Request Device Info](#), it is first of all necessary to connect the device to a PC, and make sure that the right port has been selected. Connect the MyHOME_Screen3,5 to the PC using a USB-miniUSB cable, or an Ethernet cable. For communication to take place, the device must be connected to the BUS.

USB connection



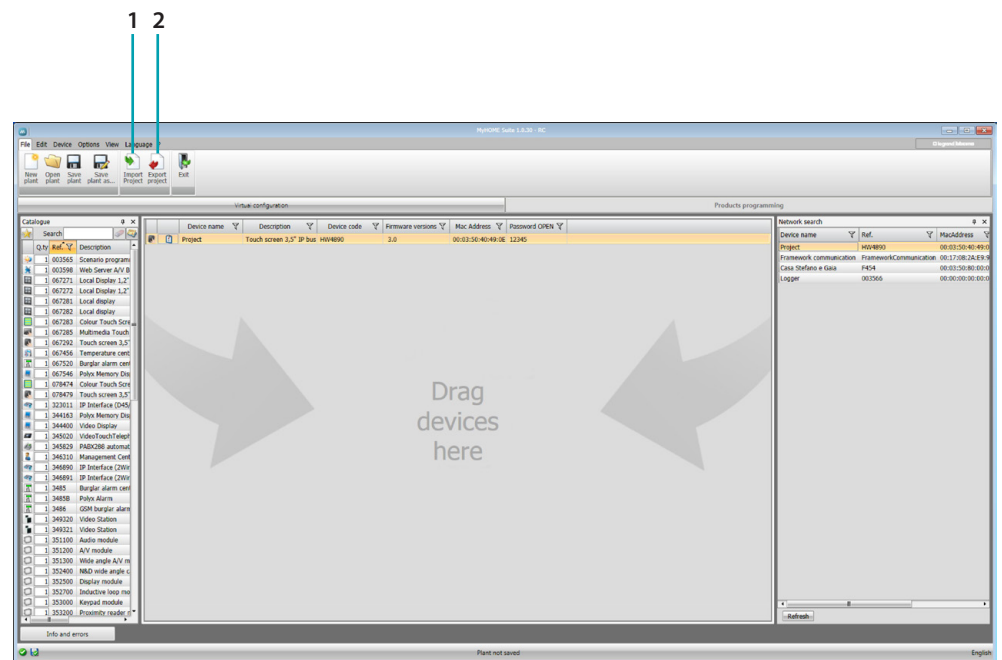
Ethernet connection



Device configuration

The device can be configured by creating a new project, or by opening and existing one, which can then be changed and resent to the device. These operation can be performed inside the global area of the software, using some dedicated device management pushbuttons:

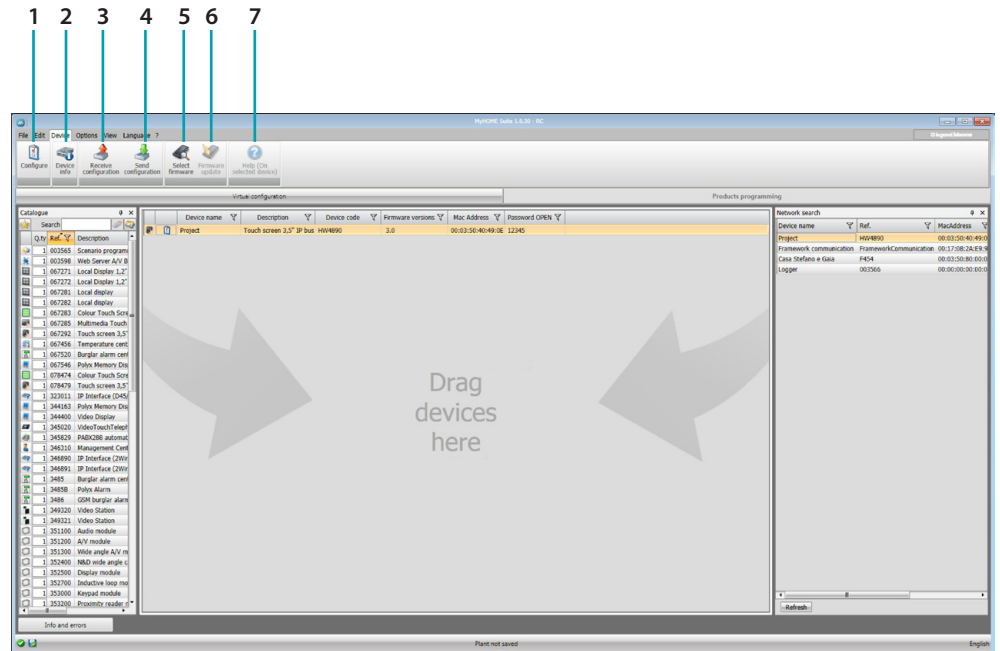
File Menu



1. Import project
2. Export project

To import or export the configuration project created in the specific area, select the device, and click the corresponding key.

Device Menu

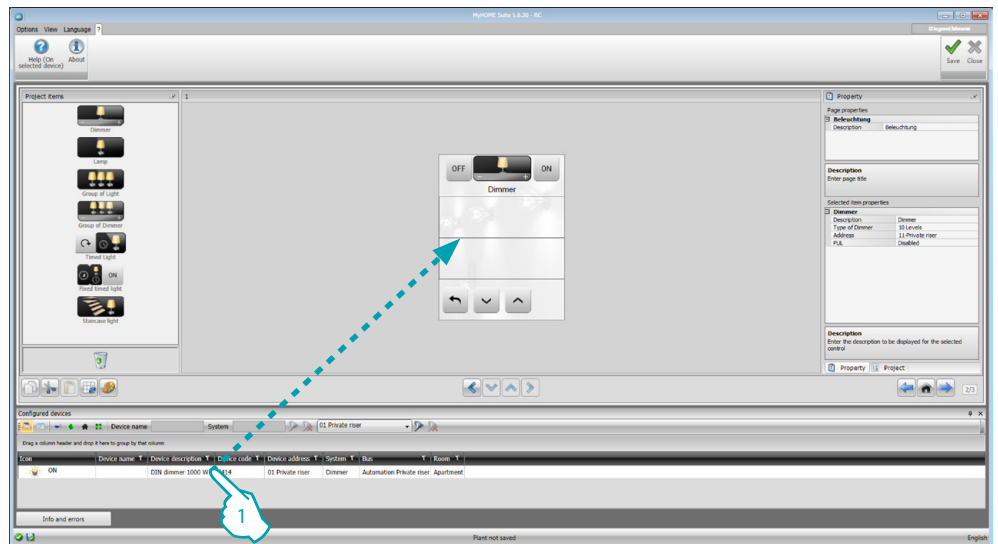


1. Open the specific device configuration area
2. Request Device Info
3. Receive the configuration from the connected device
4. Send the configuration to the connected device
5. Select a firmware for the device
6. Update the device firmware
7. Open the Help file for the device selected

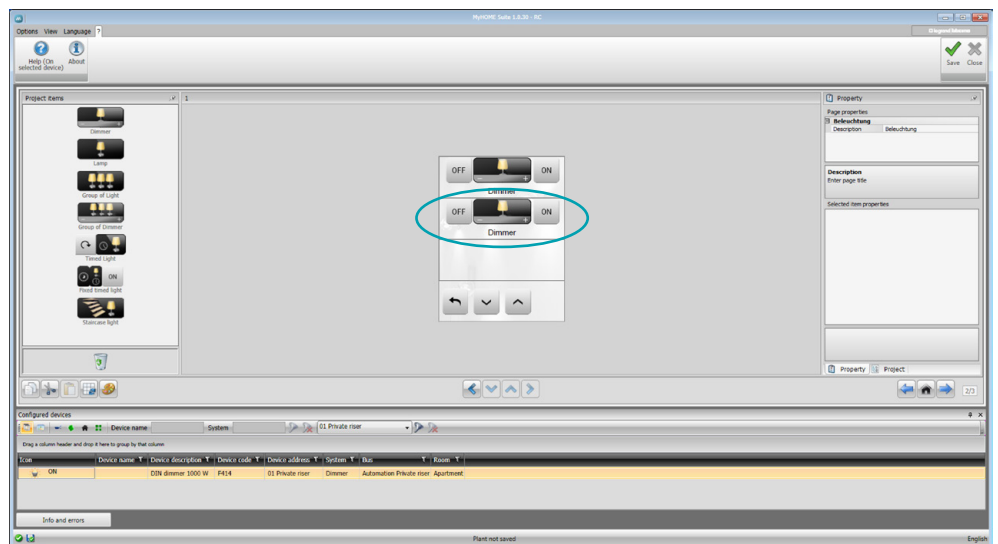
To interact with the device, first select it, and then click the desired function keys.

Configured objects

The objects included and configured in the global project are available in the configured objects area and can only be displayed in the system they belong to.



1. Drag the selected object inside the "Display" area of the software.



The object will now be visible in the "Display" area, and no further configuration will be necessary.

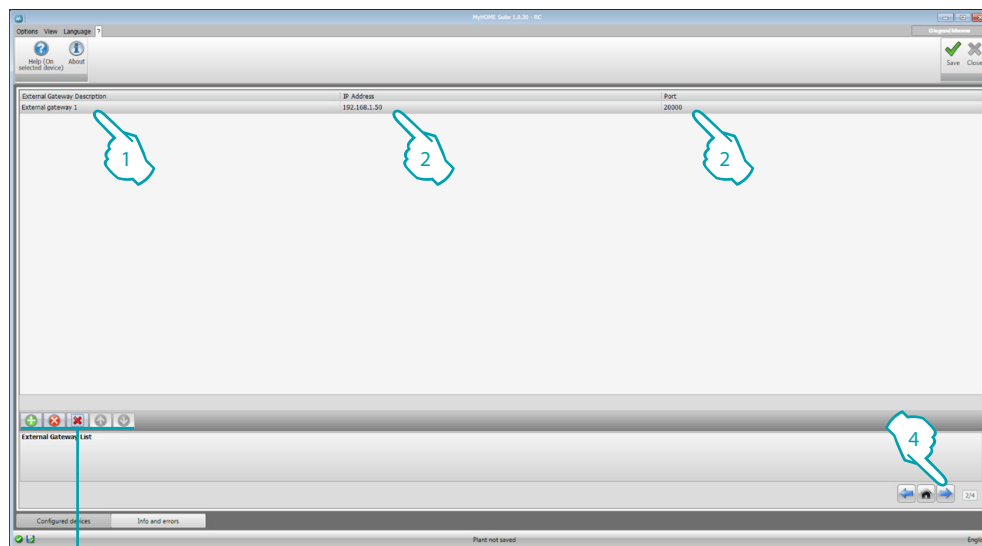
Configuration Parameters

- **General parameters, clock**
Clock alignment function: decide if MyHOME_Screen will be set as the Master clock of the My Home system
Data format: select the date format (e.g. dd.mm.yy. /mm.dd.yy. /yy.mm.dd.)
- **Temperature unit of measurement**
Temperature format: select if you wish to display the temperature in Celsius (°C) or in Fahrenheit (°F)
- **Automation**
Level: if the device is wired to the SCS BUS, select the level it belongs to (private riser/local BUS)
- **Video door entry system**
Video door entry system: select enable if the device is wired to the video door entry system BUS, select disable if it is wired to the automation BUS
IP address: if "Enable" has been selected during the configuration, enter the address of the handset associated to MyHOME_Screen
- **Multimedia**
Multimedia source address: enter the MyHOME_Screen address as sound system source (if adaptor 3496 is present)
- **Managing external Gateways**
External Gateway: enable/disable the presence of an interface towards the BACnet (F450) system
- **Default standby page**
Default standby page: select the page that appears when leaving standby. This can be the last page displayed, the Home page, or the Favorites page
- **Language**
MyHOME_Screen language: select the language that will be displayed on MyHOME_Screen

After configuring the parameters click the  pushbutton to go to the configuration of the external Gateways (if enabled).

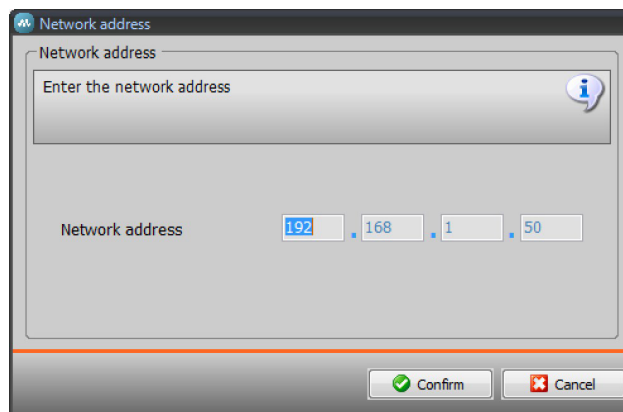
External Gateway

The setting of an external gateway, for example F450, gives the possibility of controlling the external proprietary systems using MyHOME_Screen (e.g. HVAC-Bacnet systems).



3

1. Customise the description of the external Gateway.
2. Click to enter the IP address of the Gateway.



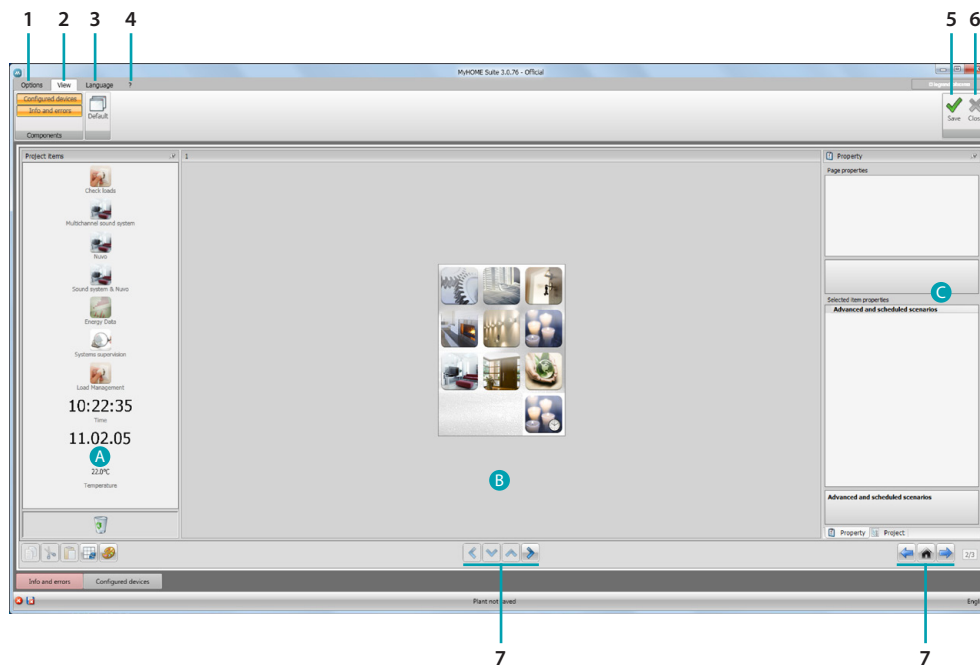
3. Gateway management pushbuttons.

- | | |
|--|-----------------------------|
| | Add a Gateway |
| | Remove the selected Gateway |
| | Remove all the Gateways |
| | Move the Gateway up |
| | Move the Gateway down |

4. After configuring the parameters, click (4) to enter the functions that will be performed by MyHOME_Screen.

Home page

The page is divided into three sections: On the left section (A) is the “Project items” area. The centre section (B), is the “Display” area. This is used to configure what will then be displayed as the Home Page of the device, and its subpages. On the right side of the screen (C) is the “Property/Project area”, which can be used to configure the object selected in the Display area.

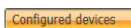


1. Options.

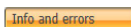


Disable automatic save

2. View.



Display/hide the Configured objects area



Show/hide the info and error area



Reset the default settings

3. Language.

Select the software interface language

4. Display the device Help icons (?) and some software information (i).

5. Save the project.

6. Return to the global area.

7. Pushbutton used to navigate through the pages.



Navigate through sections



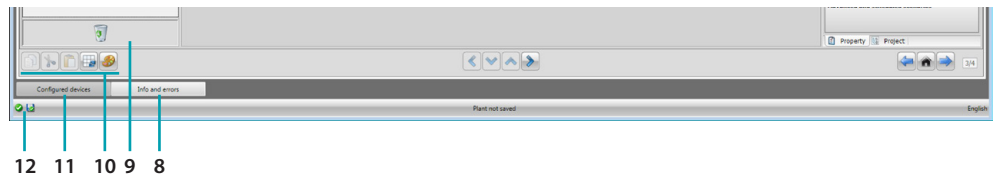
Navigate through the configuration pages



Navigate within a section




Go to the start page





8. Open the section showing any information, or error messages.

9. Delete an object.

10. Editing bar.

 Copy an object

 Cut an object

 Paste an object

 Align to the grid

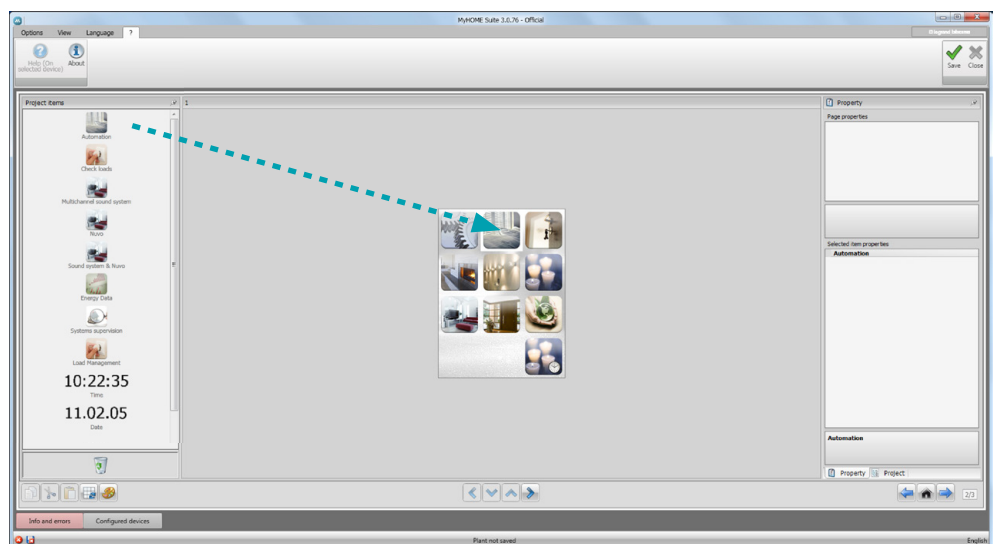
 Select the skin

11. Open the Configured Objects area.

12. File save display.

Project items

This area shows all the objects that can be used to build the pages. To do this simply drag the objects.

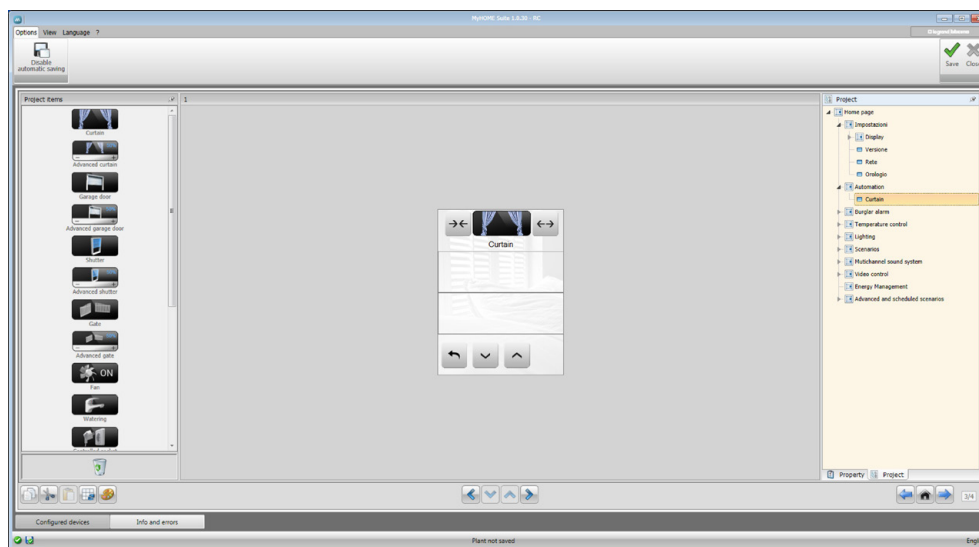


Warning: The "Energy Data", "System Supervision", and the "Load Management" functions may be included individually in the project. Alternatively, select the "Energy Management" function, which groups together the three above mentioned functions.

Sub-pages

Some objects are used for connection to other pages, where correlated objects can be grouped together (e.g. Automation).

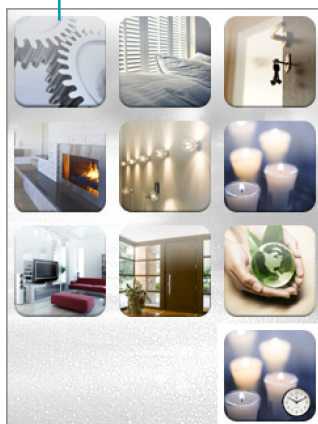
The configuration of the sub-pages is performed following the order the objects have been included in the Home Page.



Display

The “Display” area shows the future setup of the Home Page and the sub-pages of the device. This page consists of customisable objects. The “Settings” icon is the only one that cannot not be removed.

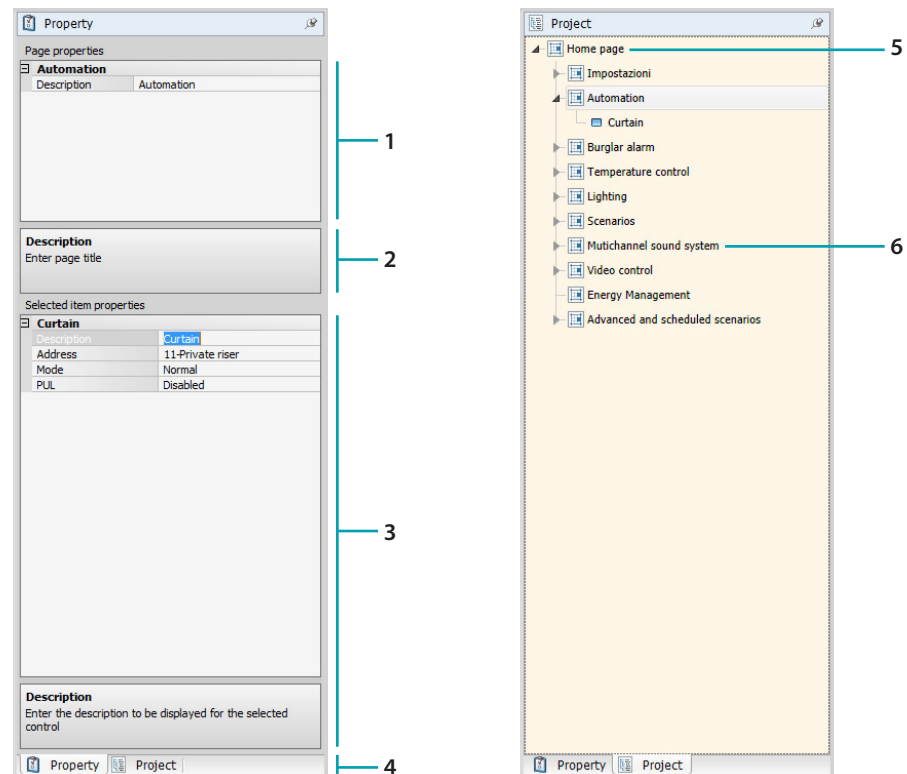
Settings



Property/Project

This area is split into two sections, which can be selected by clicking the labels at the bottom; the “Property” section shows the configuration fields for the object currently selected in the Display area.

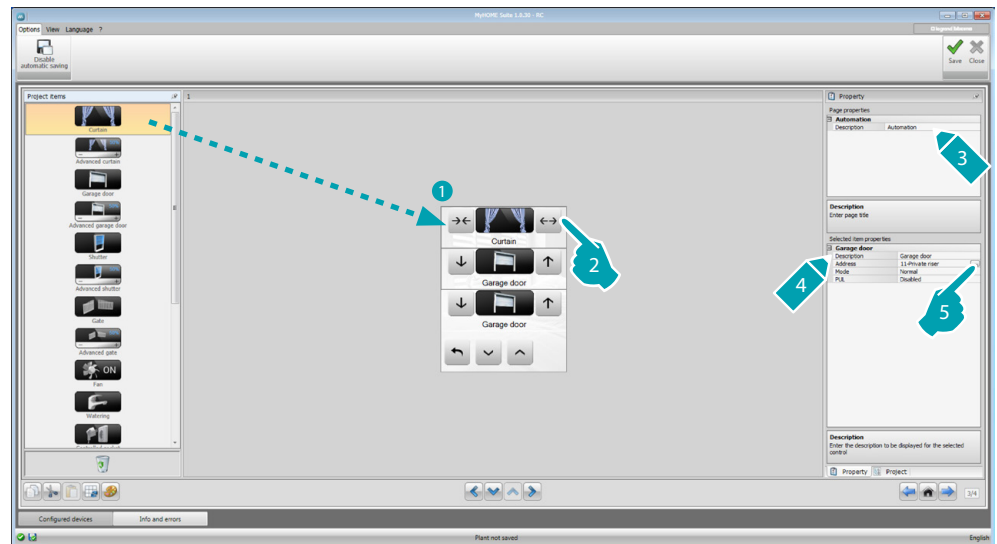
The “Project” section displays the objects by page in a tree menu format. In addition to selecting the objects, the user can also navigate through the project, selecting any available sub-pages.



1. Page Parameters.
2. Indications for the configuration of the selected parameters.
3. Selected object properties.
4. Property/Project selection label.
5. Home page.
6. Sub-page.

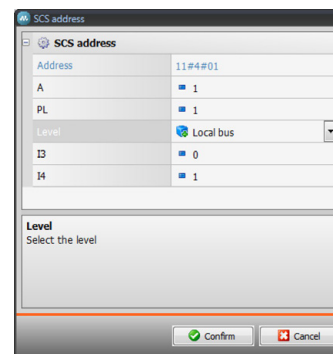
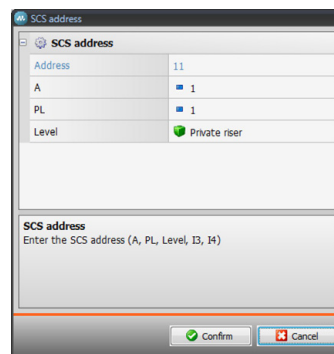
Common configurations

This section shows the procedures found in most of the configuration screens. These procedures are highlighted by the light blue filling of the symbols (arrows, hands, pencils).

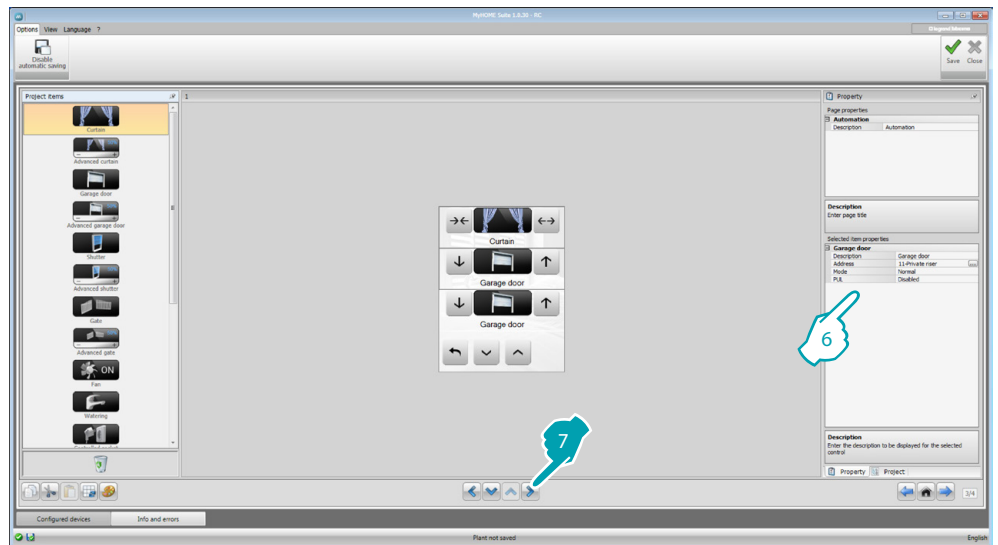



Modifying an existing project

1. Double click or drag the function/application from the "Project items" area to the "Display" area.
2. Select a function from the "Display" area.
3. Customise the page description in the "Page Properties" area.
4. Customise the description of the selected function in the "Selected Item Properties".
5. Click to configure the address.



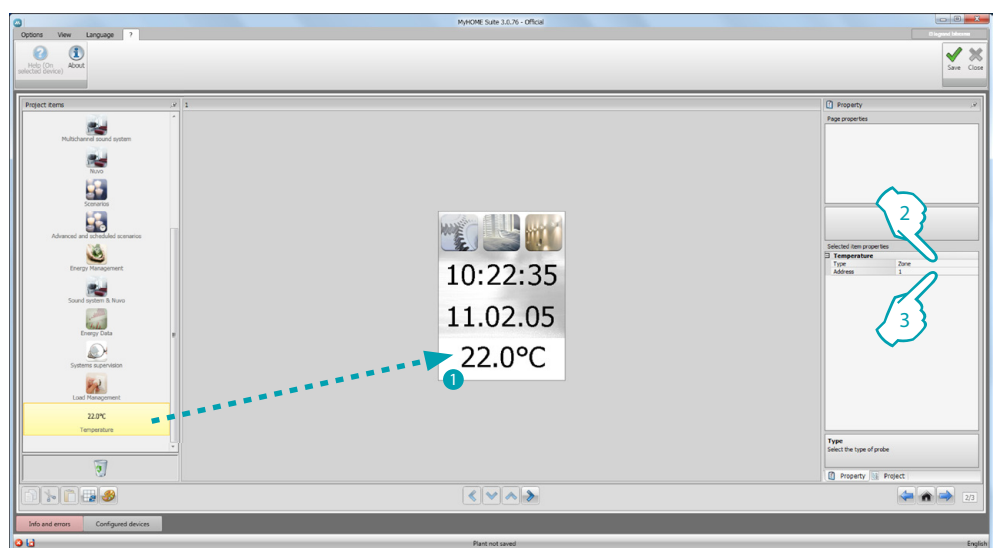
- **A = Room:** select the value of the configurator of the A room (0 - 10, GEN, AMB, GR).
- **PL = Light point:** select the value of the configurator of the PL light point (the number depends on the function).
- **Level:** select the level it belongs to (Private riser = level 3 or Local Bus = level 4).
If Level = Local Bus is selected, the interface field appears.
In this case select the logic expansion interface address where the object to control is located.



- The other parameters can be found in the “Selected Item Properties” area. They differ depending on the selected object and will be explained in the following sections.
- Once the page configuration/customisation operation has been completed, click the  pushbutton to go to the next page.

Time/Date/Temperature

If you include these objects in the Home Page, you will be able to display on the device the time and date, as well as the temperature measured by a specific zone. For the first two objects no configuration is required; however, for the temperature object:



- Drag the Temperature object from the “Project items” area to the “Display” area, or double click the object.
- Select the type of device the temperature will be read from.
- Select the address of the device.

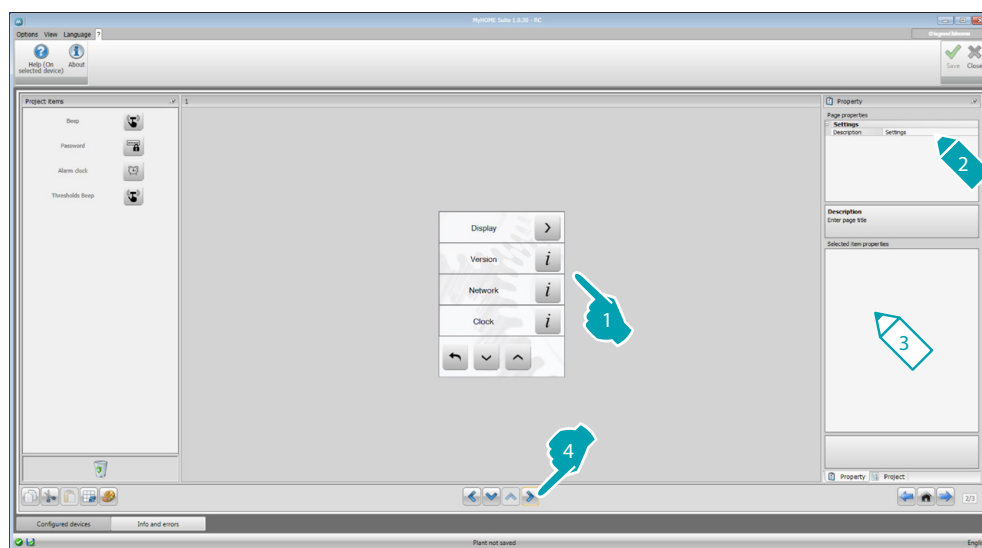
Functions

- [SETTINGS](#)
- [AUTOMATION](#)
- [LIGHTING](#)
- [BURGLAR ALARM](#)
- [TEMPERATURE CONTROL](#)
- [VIDEO DOOR ENTRY SYSTEM](#)
- [SOUND SYSTEM](#)
- [SCENARIOS](#)
- [PROGRAMMED ADVANCED SCENARIOS](#)
- [ENERGY MANAGEMENT](#)

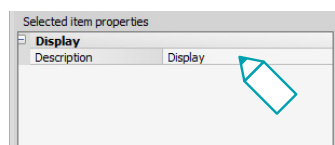
Settings

In this section you can include the objects to customise MyHOME_Screen depending on your needs.

The Display, Version, Network, and Clock functions are included by default and cannot be removed.

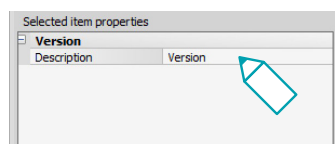


3. Display configuration:



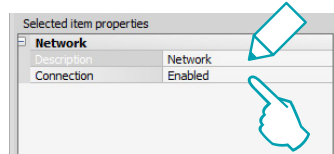
- **Description:** enter a customised description of the Display object.

3. Version configuration:



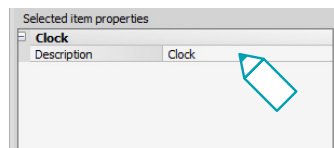
- **Description:** enter a customised description of the Version object.

3. Network configuration:



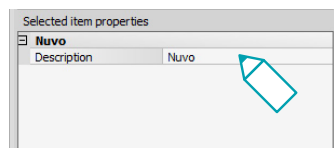
- **Description:** enter a customised description of the Network object.
- **Connection:** decide if to enable/disable the network card of MyHOME_Screen.

3. Clock configuration:



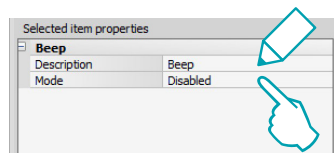
- **Description:** enter a customised description of the Clock object.

3. NuVo configuration:



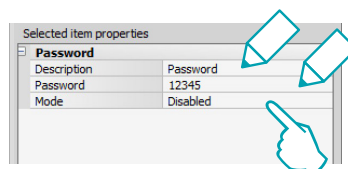
- **Description:** enter a custom description of the NuVo object.

3. Beep configuration:



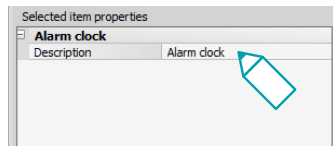
- **Description:** enter a customised description of the Beep object.
- **Mode:** select if to enable/disable the sound emitted when the icons are touched.

3. Password configuration:



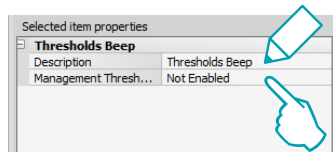
- **Description:** enter a customised description of the Password object.
- **Password:** enter a numerical password of your choice.
- **Mode:** select if to enable/disable the password.

3. Alarm Clock configuration:



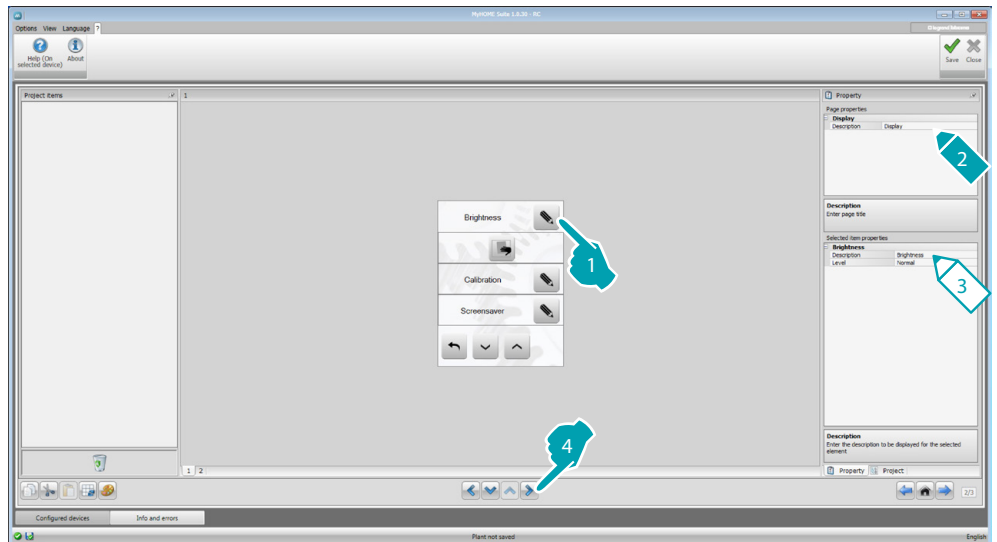
- **Description:** enter a customised description of the Alarm Clock object.

3. Threshold Beep configuration:

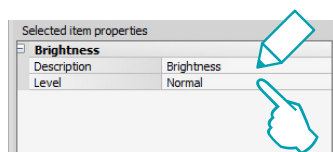


- **Description:** enter a customised description of the threshold Beep object.
- **Threshold Beep management:** select if to enable/disable the beep when a consumption or production threshold of an electric line is reached.

Display

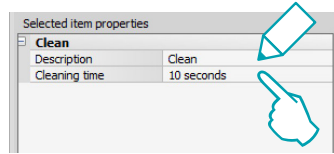


3. Brightness configuration:



- **Description:** enter a customised description of the Brightness object.
- **Level:** select the brightness level during the activation of the Screensaver.

3. Clean configuration:

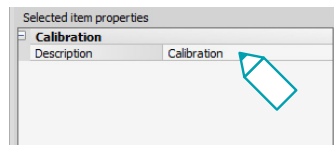


- **Description:** enter a customised description of the Clean object.
- **Cleaning time:** select a time interval between 10 seconds and 1 minute. MyHOME_Screen will be disabled during the set time, enabling the user to clean the screen.



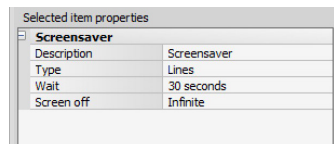
Warning: Never clean using solvents, thinners etc., or abrasive products.

3. Calibration configuration:



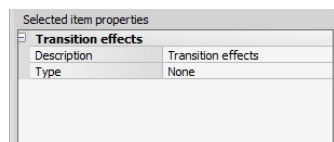
- **Description:** enter a customised description of the Calibration object.

3. Screensaver configuration:



- **Description:** enter a customised description of the Screensaver object.
- **Type:** select the type of Screensaver (lines, none, bubbles, time, text).
- **Wait:** select the time delay before the screensaver activates.
- **Screen off:** select the time delay before the screen turns off.

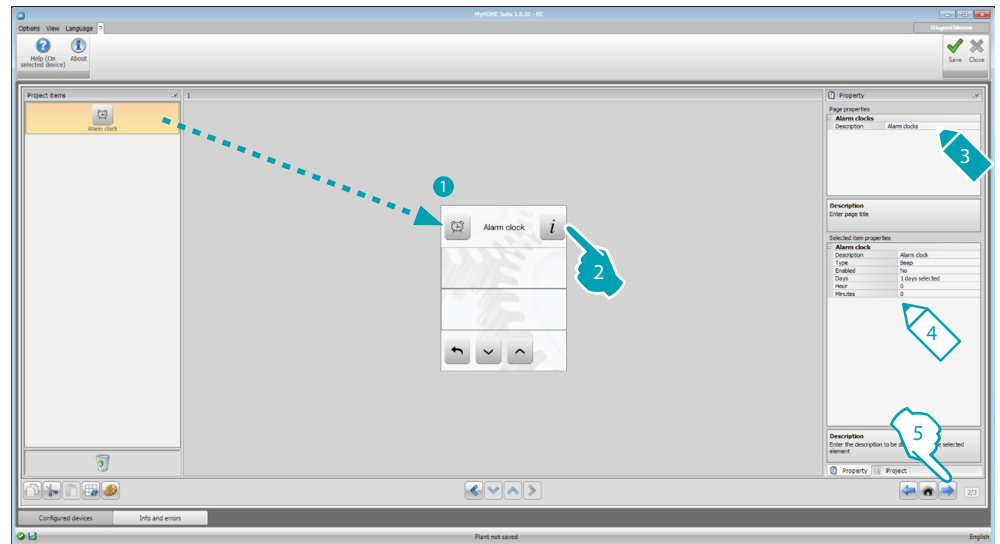
3. Transition effects configuration:



- **Description:** enter a customised description of the Transition Effects object.
- **Type:** select the type of effect for the object.

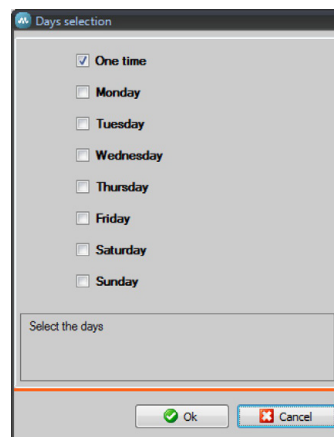
Alarm clock

The “Alarm clock” object (if previously included) gives the possibility of enabling/disabling the MyHOME_Screen alarm clock. If sound system is selected, it will be possible to set (from the device) one or more rooms of the sound system in which the alarm clock will be activated, and the source to switch on (stereo control/radio, etc.).



4. Alarm clock configuration:

- **Description:** enter a customised description of the Alarm clock object.
- **Type:** select the type of alarm clock (Beep or sound system).
- **Enabled:** select if to enable/disable the alarm clock.

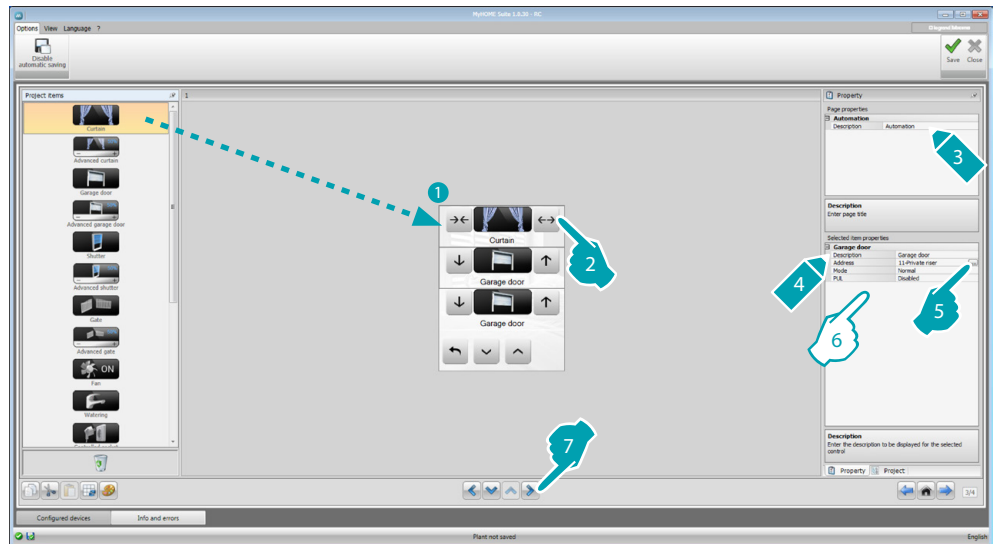


- **Days:** select the days during which the alarm clock will be active.
- **Hour:** select the hour when the alarm clock will activate.
- **Minutes:** select the minutes when the alarm clock will activate.

5. Once the page configuration/customisation operation has been completed, click the pushbutton to go to the next page.

Automation

In this section it is possible to enter objects used to manage in a simple way all the automatism of the home automation system, like rolling shutters, shutters, motorised curtains, controlled sockets, watering system, etc.



Advanced actuator control

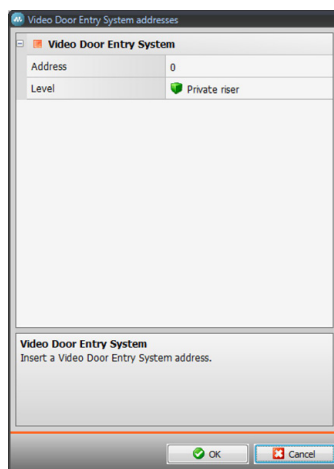
All the automation commands have an advanced mode. This means that when an advanced actuator is installed, advanced functions will also be available: for example, the user will be able to display and change the opening percentage level using appropriate + and - icons.

6. Configure the object:

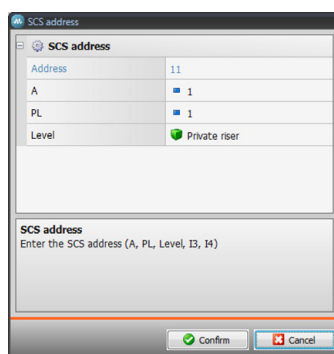
- **Mode:** For some types of automatisms (curtain, garage door, shutter and gate) the operating mode of the command must be configured:
 - Safe mode
Opening or closing is performed only while the corresponding key is pressed. When you release the key the movement will stop.
 - Normal mode
To start the opening or closing movement, touch the corresponding key. During the movement the icon changes, showing the Stop pushbutton, to indicate that the function is active. When you release the key the movement stops automatically. To stop the movement click Stop.
- **PUL:** select enabled if the actuator that you are configuring is configured physically or virtually as PUL.

For the Door lock command select the video door entry system address, or the address of the entrance panel associated to the system (if the device is wired on the video door entry system BUS); if the device is wired on the automation BUS, for the Door lock command the values A and PL must be entered.

Video door entry type



Automation type



Lighting

In this section you can include objects to switch a light or a group of lights ON or OFF, adjust their intensity, as well as set the lights to come on for set times.



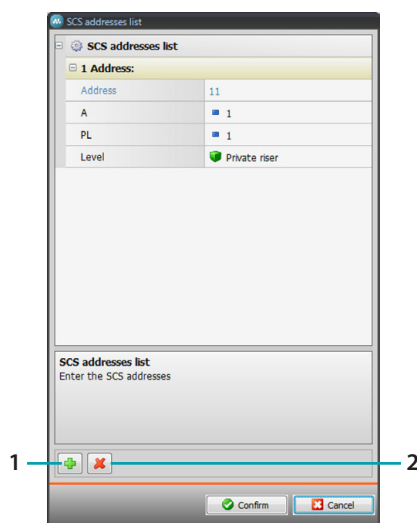
6. Configure the object:

Dimmer, Lamp

- **Dimmer type:** select the dimmer type (10 levels/100 levels).
- **Timed light on:** enter the ON time in seconds
- **Timed light off:** enter the OFF time in seconds
- **PUL:** select enabled if the actuator that you are configuring is configured physically or virtually as PUL.

Group of light actuators, group of dimmers

These objects can be used to control several light points at the same time, setting either point-by-point controls, or controls for whole light groups and rooms, or by setting a general control.



1. Add an address
2. Delete an address

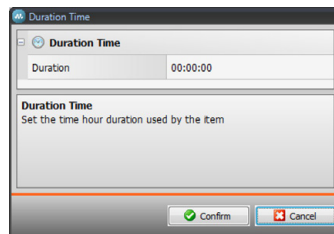
Timed light

- To configure the time you can select the option **Fixed times** (8), or the option **Configurable times**, set 1 or more “durations”, which will then be available on the device.
- **PUL**: select enabled if the actuator that you are configuring is configured physically or virtually as PUL.
- **Device**: select the type of device(actuator/Dimmer).

Fixed timed light

This object gives the possibility of configuring a light to control with a preset switch on time.

- **Time**: click to set the duration of the switch-on time interval (Hour, Minutes, Seconds), and then OK to confirm.



- **PUL**: select enabled if the actuator that you are configuring is configured physically or virtually as PUL.
- **Device**: select the type of device(actuator/dimmer).

Staircase light

If the “Staircase light” actuator is installed on the system, include this object to be able to control it from the device.

- **Address**: enter the address of the Staircase light actuator to control.

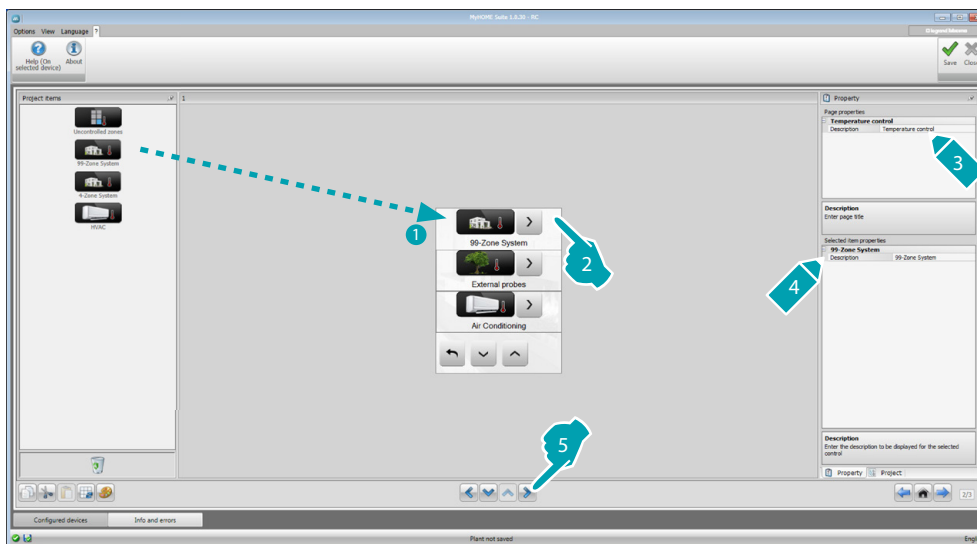
Burglar alarm

This section can be used to define the zones (8) making up your Burglar alarm system.

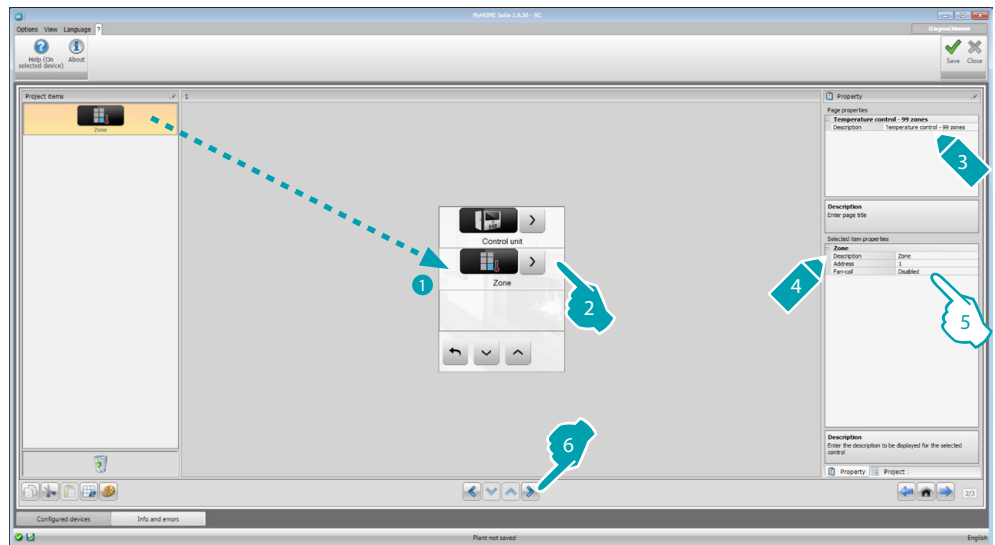


Temperature control

This section can be used to include the objects used to control and regulate the heating and air conditioning system, adjusting the temperature for each zone depending on current requirements.



Zones



5. Configure the object:

- **Address:** select the value corresponding to the configurators connected to the zones to control.
- **Fan-coil:** indicate if the sensor is a Fan-coil type sensor.



Warning: If you select the 4 zone central unit, each zone has a dedicated preset icon.

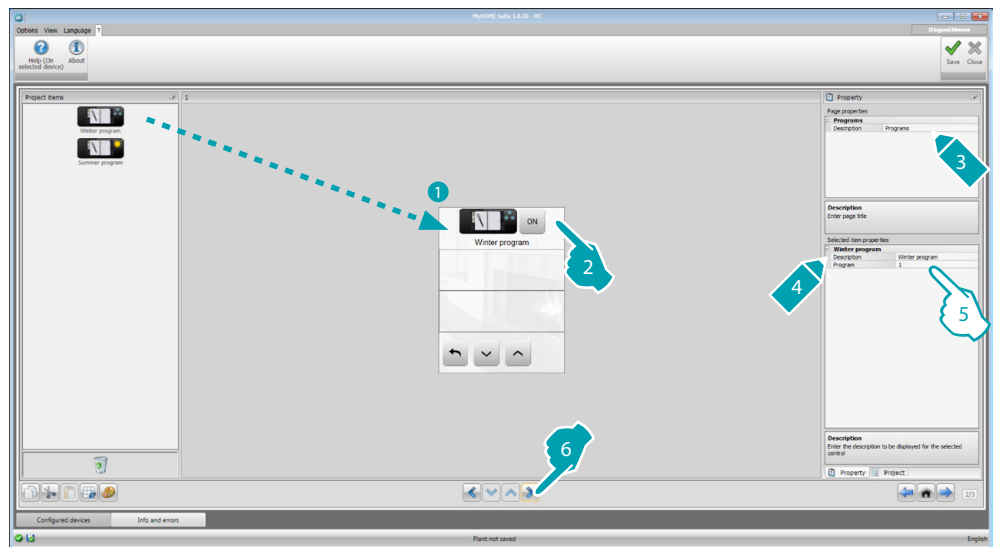
Central unit

This section includes various functions; based on the programming of the central unit it is possible to select which ones to display on the device.



Programs

This section includes the objects representing the winter and the summer programs; based on the programming of the central unit it is possible to select which ones to display on the device.

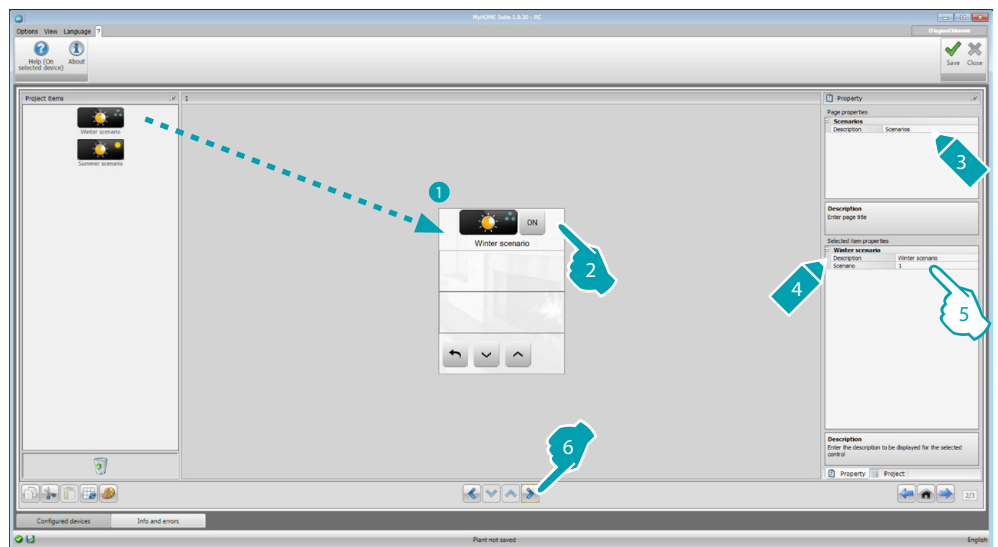


5. Configure the object:

- **Program:** select the number of the program indicated on the central unit.

Scenarios (99 zones only)

This section includes the objects that represent the winter and summer scenarios. Based on the programming of the actual central unit it will be possible to choose which ones to display on the device.

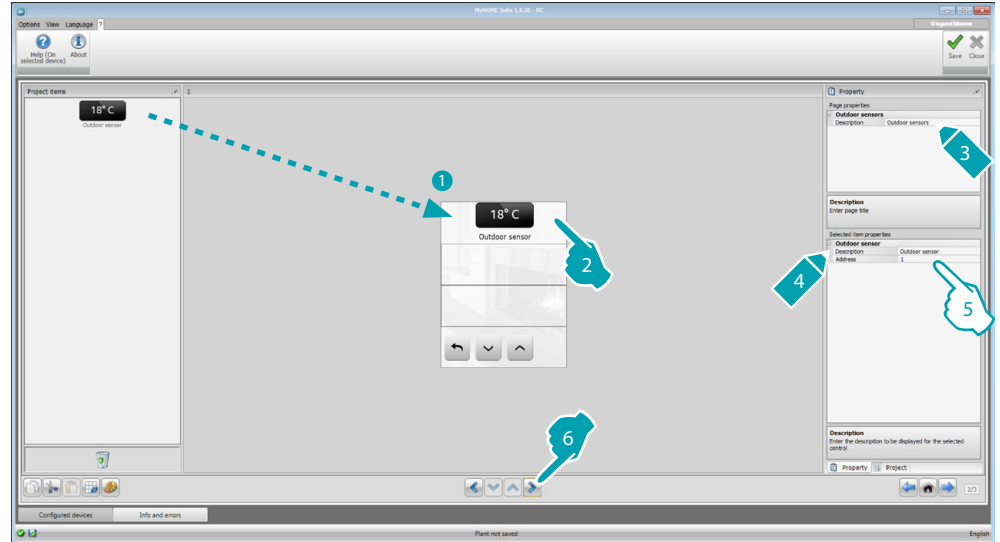


5. Configure the object:

- **Scenario:** select the number of the scenario indicated on the central unit.

Outdoor sensors

This section can be used to include the external radio sensors found on the system.

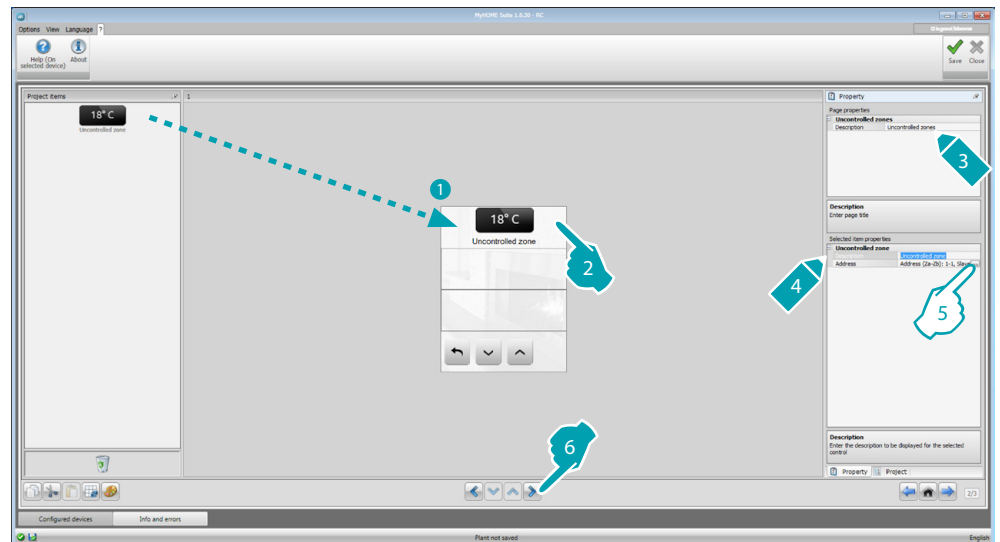


5. Configure the object:

- **Address:** select the address of the outdoor sensor to associate.

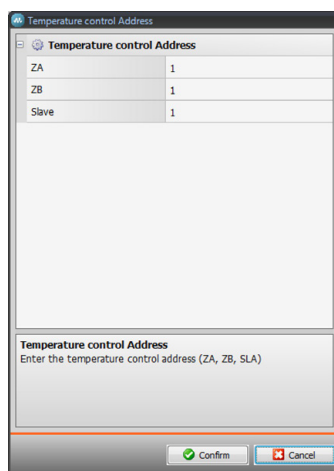
Non-controlled zones

In this section it is possible to include the non-controlled zones (measurements only) of the system.



5. Configure the object:

- Click to configure the address.




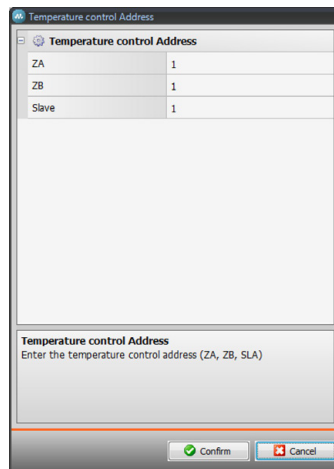
- **ZA, ZB, Slave:** to be configured in the same way as the sensor of the non-controlled zone.

Air Conditioning

This section can be used to include the AC units present in your air conditioning system, define and group the preferred commands together and, for each unit, the commands to be made available on MyHOME_Screen.



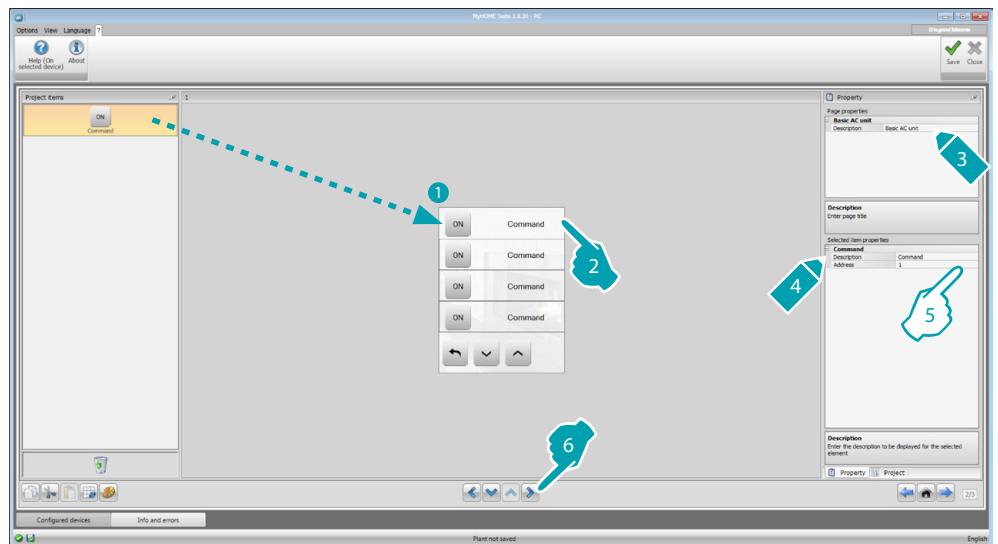
1. Select the control mode, Basic or Advanced. The difference between the two modes is that with Basic mode you can manage the system using the 20 commands saved in interface 3456, while in Advanced mode there is full control, as if using the remote control of the AC unit.
7. Configure the object (Basic mode):
 - Internal AC unit
 - **Address of the OFF command:** enter the number of the command configured as OFF on interface 3456.
 - **Sensor enabled:** select "Yes" if the slave sensor is present (for the measurement of the temperature of the associated zone).
 - **Sensor address:** Click  to configure the address of the SLAVE sensor.



- **ZA, ZB, Slave:** to be configured in the same way as the sensor.
- **Show OFF command:** select "Yes" to display on MyHOME_Screen the OFF command associated to the internal AC unit.

Internal AC unit (favorite commands)

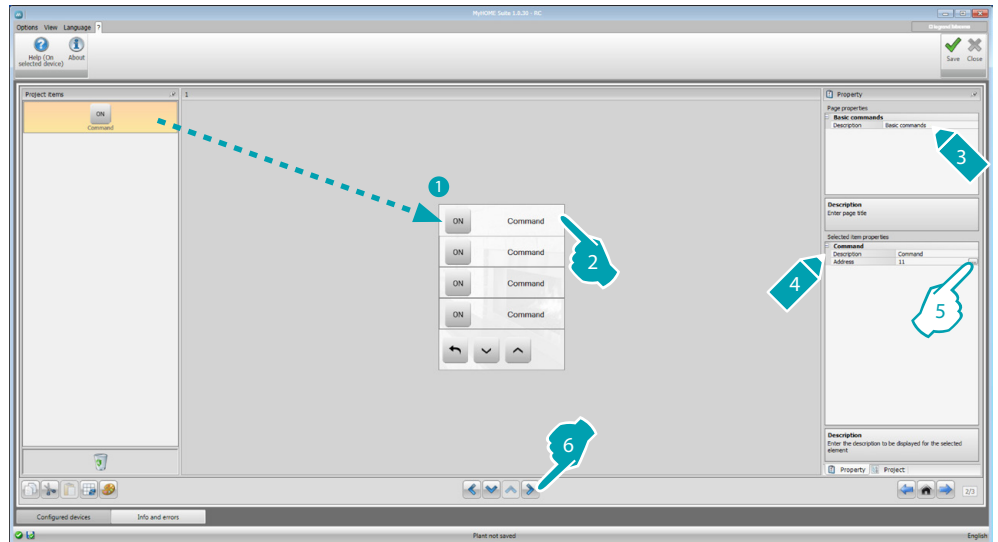
In this section it is possible to include some favorite commands, selected among the 20 available on interface 3456.



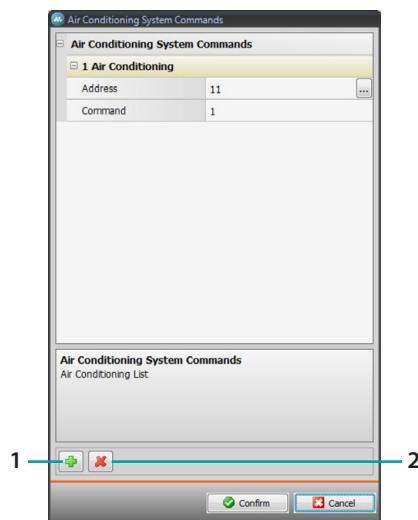
5. Configure the object:
 - **Address:** enter the address of the command.

Group of commands

In this section it is possible to include a command and configure it so that it sends commands saved in different internal AC units at the same time.



5. Configure the object:
Click to configure the command address.

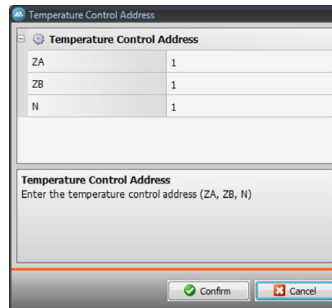


- **Address:** click to enter the address of the internal AC unit.
- **Command:** select the number of the command (1 to 20).

1. Add a command
2. Delete a command


7. Configure the object (advanced mode):

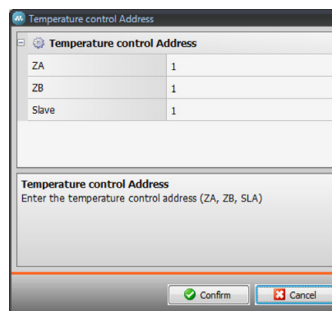
Internal AC unit

Click  to configure the address of the internal AC unit.


Temperature Control Address	
ZA	1
ZB	1
N	1

Temperature Control Address
Enter the temperature control address (ZA, ZB, N)

- ZA, ZB, N: to be configured in the same way as interface 3456.
- **Sensor enabled:** select “Yes” if the slave sensor is present (for the measurement of the temperature of the associated zone).
- **Sensor address:** click  to configure the address of the SLAVE sensor.



Temperature control Address	
ZA	1
ZB	1
Slave	1

Temperature control Address
Enter the temperature control address (ZA, ZB, SLA)

- ZA, ZB, Slave: to be configured in the same way as the sensor.
- **Show OFF command:** select “Yes” to display on MyHOME_Screen the OFF command associated to the internal AC unit.
- **Minimum temperature:** select the minimum temperature that can be set on the internal AC unit.
- **Maximum temperature:** select the minimum temperature that can be set on the internal AC unit.
- **Step:** select the desired increase step among the different temperature values (0.5° C or 1° C).
- **Mode:** Select “Yes” if the internal AC unit includes the following modes:
 - Automatic;
 - Cooling;
 - Heating;
 - Dehumidifier;
 - Fan;
 - Fan speed presence:
 - Automatic;
 - High;
 - Medium;
 - Low;
 - Silent;
 - Swing presence.

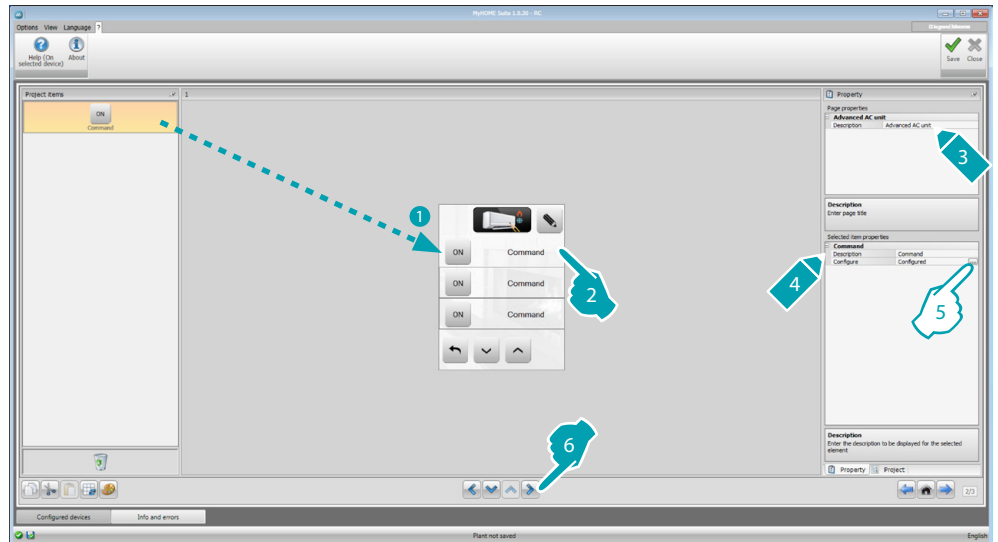


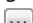
Warning: The configuration of the parameters of the internal AC unit depends on the functions of each individual internal AC unit installed.

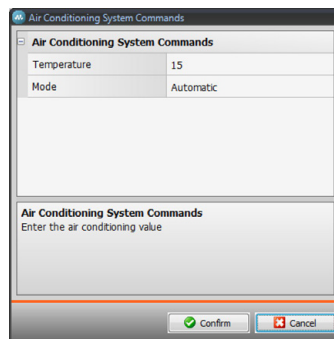
Internal AC unit (favorite commands)

This section can be used to include all the commands that will be available on MyHOME_Screen.

For each of them it is possible to set the available parameters based on the configuration of the internal AC unit.



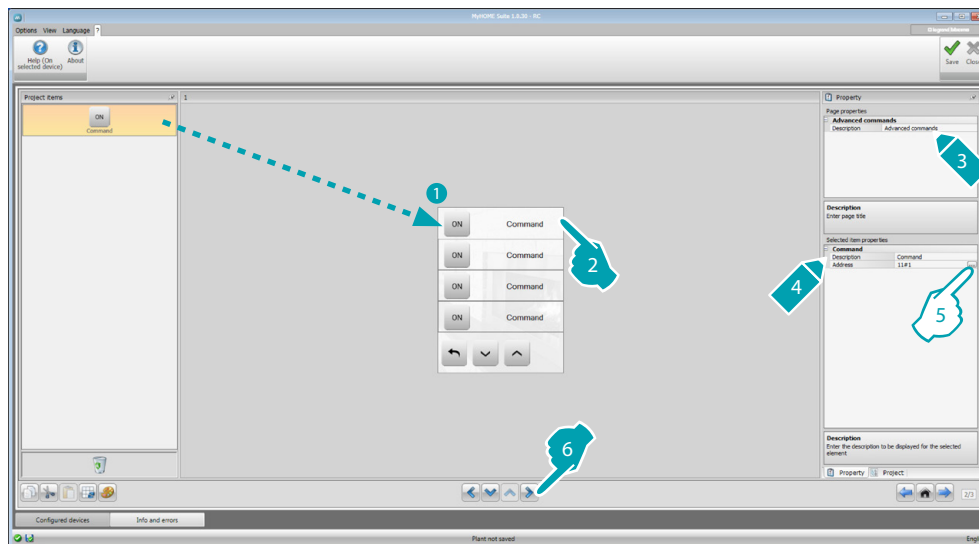
5. Configure the object:
Click  to configure the command.



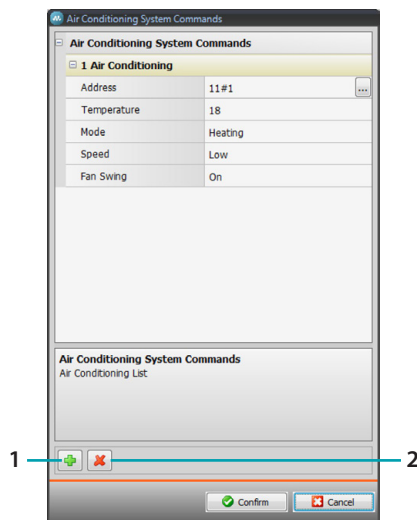
Select the settings making up the command.

Group of commands

In this section it is possible to include a command and configure it so that it sends commands to different internal AC units at the same time.



5. Configure the object:
Click to configure the command address.

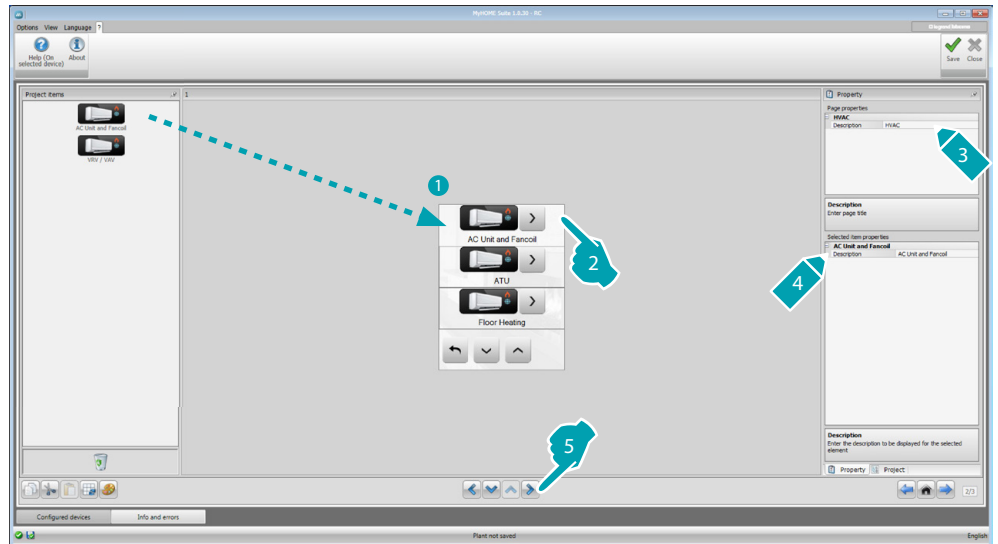


- **Address:** click to enter the address of the internal AC unit.
- **Temperature:** select the temperature to associate to the command.
- **Mode:** select the mode to associate to the command.
- **Fancoil speed:** select the speed to associate to the command.
- **Fan Swing:** select if the swing should be on or off.

1. Add a command
2. Delete a command

HVAC

This section it is possible to include the objects of the BACnet system that you want to control using MyHOME_Screen.

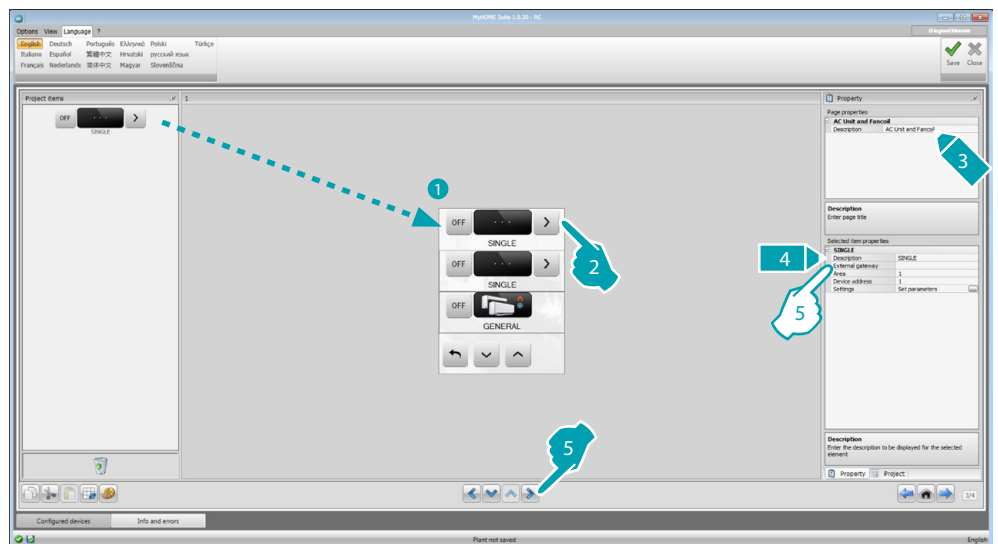


AC Unit and Fancoil


In this section it is possible to configure the internal AC units and the fancoils, entering the HVAC gateway and the address (individual configuration) or just the HVAC gateway (general configuration).

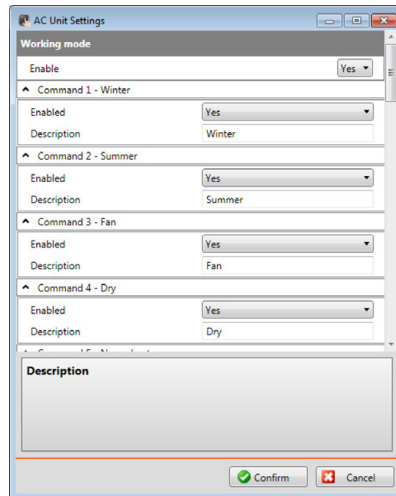
The individual configuration gives the possibility of defining the commands that will be displayed on MyHOME_Screen.

The general configuration gives the possibility of sending an OFF command to all the devices connected to the gateway.



5. INDIVIDUAL configuration:

- **External Gateway:** select the BACnet gateway the unit to control belongs to, among the ones available.
- **Area:** enter the Area address of the BACnet system relating to the unit to control.
- **Device address:** enter the device address on the BACnet system relating to the unit to control.
- **Settings:** click  to select which parameters you want to manage for the unit to control.



5. GENERAL configuration:

- **External Gateway:** select the BACnet gateway the unit to be controlled belongs to, among the ones available.

ATU

The configurations of the parameters for the ATU object are:

- **Operating mode**
- **Temperature setup**
- **Fancoil speed**
- **Humidity**
- **Humidity setup**
- **Air flow**
- **Air flow setup**
- **Minimum air flow setup**
- **Maximum air flow setup**
- **Recycling percentage**
- **Air quality sensor**

Floor Heating

The configurations of the parameters for the Floor Heating object are:

- **Operating mode**
- **Temperature setup**

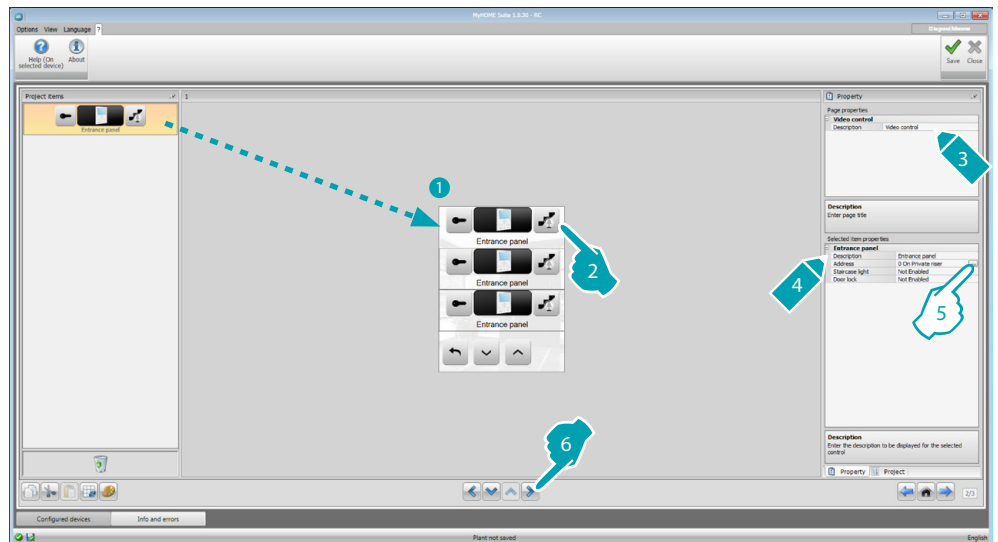
VRV/VAV

The configurations of the parameters for the VRV/VAV object are:


- **Operating mode**
- **Temperature setup**
- **Air flow setup**

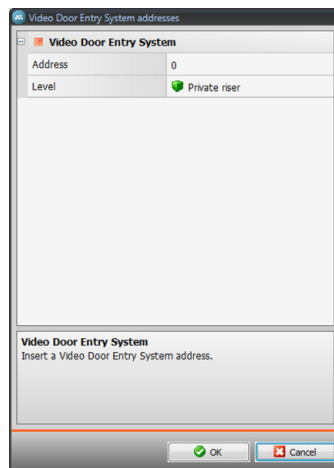
Video door entry system

Depending on the video door entry system installed, in this section the user can configure which entrance panels can be controlled by MyHOME_Screen and control for each entrance panel the release of the door lock and/or the switching on of the staircase lights.



5. Configure the object:

Click  to configure the address of the entrance panel.



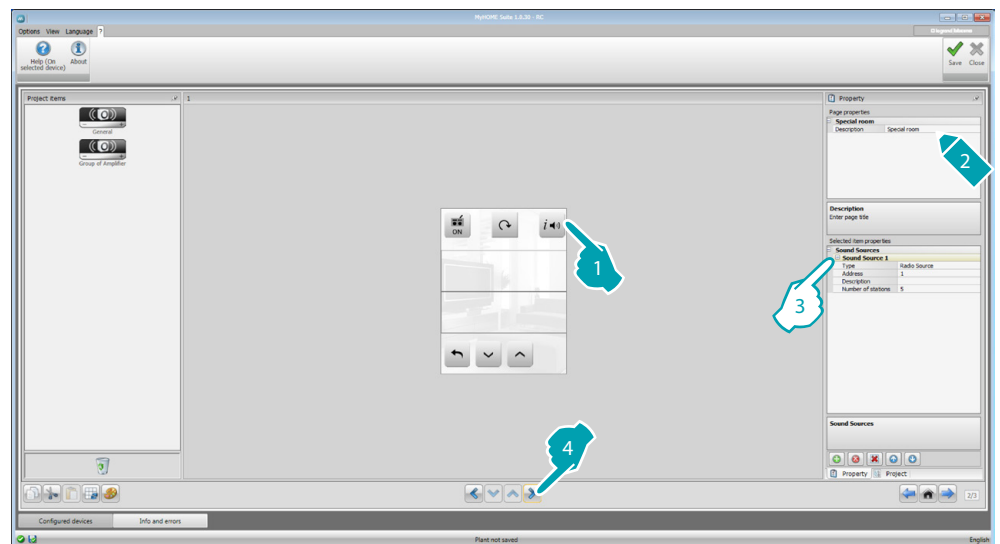
- Select the address corresponding to the configurator connected to the device to control.
- **Staircase light:** enable/disable the Staircase light command.
- **Door lock:** enable/disable the Door lock command.

Sound system

In this section you can define which sound sources and amplifiers are in your system and configure them as the installed ones. You can also create groups of amplifiers that will be activated at the same time. Select the type of sound system based on how your system has been set up. With multichannel sound system you can play different music in each room at the same time.



Sound sources








3. Configure the object:

- **Type:** select the type of source (Radio source / AUX source / Multimedia source). The Radio source refers to the Radio Tuner, the Aux source to an external source (e.g.: CD player) connected to the Stereo Control, or to an RCA input. The Multimedia source refers to a MyHOME_Screen that that operates as system source.



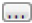
Warning: If MyHOME_Screen is used as sound system source, the same address must not be used for another source.

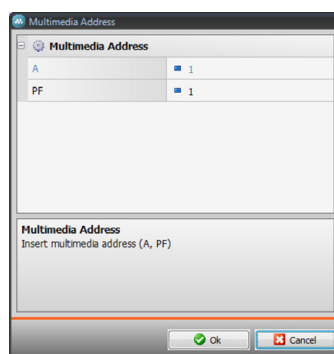
- **Address:** select an address for the selected sound source.
- **Description:** enter a customised description of the selected sound source.
- **Number of stations:** select the number of stations saved in the F500N Radio.

	Add sources
	Delete the selected source
	Delete all the sources
	Arrange the sources in the desired order
	

Amplifiers



5. Configure the object:
Click  to configure the address.

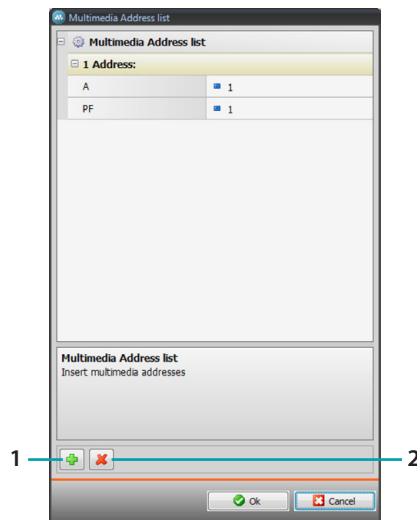


- A, PF: configure in the same way as the device to control.

Group of amplifiers



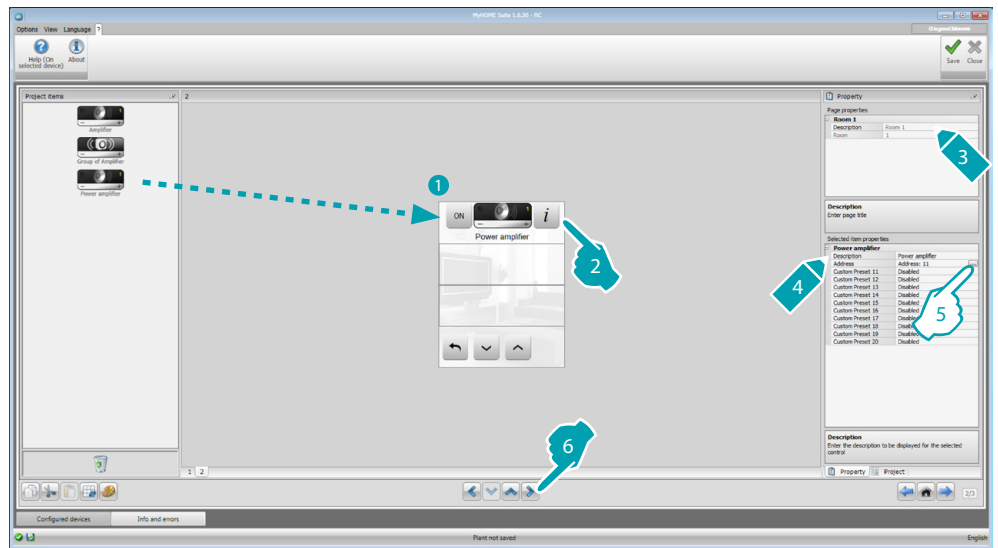
5. Configure the object:
Click to configure the addresses of the amplifiers making up the group.



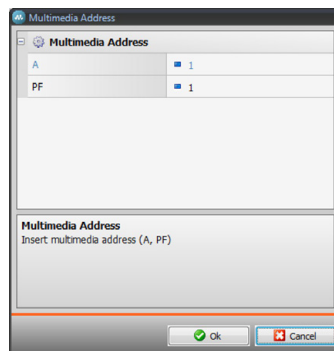
- A, PF: configure in the same way as the device to control.

1. Add an amplifier.
2. Delete an amplifier.

Power amplifier



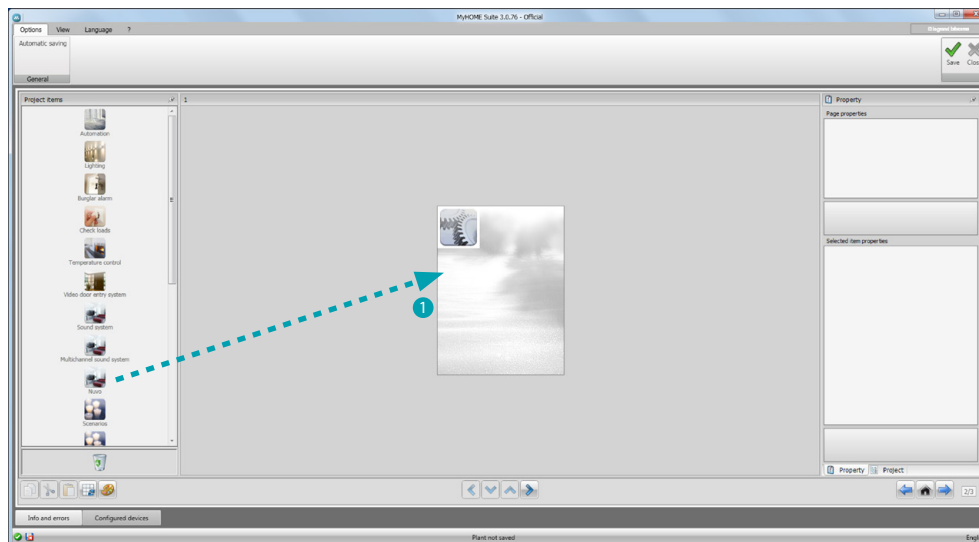
5. Configure the object:
Click to configure the power amplifier address.



- A, PF: configure in the same way as the device to control.
- Custom preset: enable/disable a custom preset.

NuVo

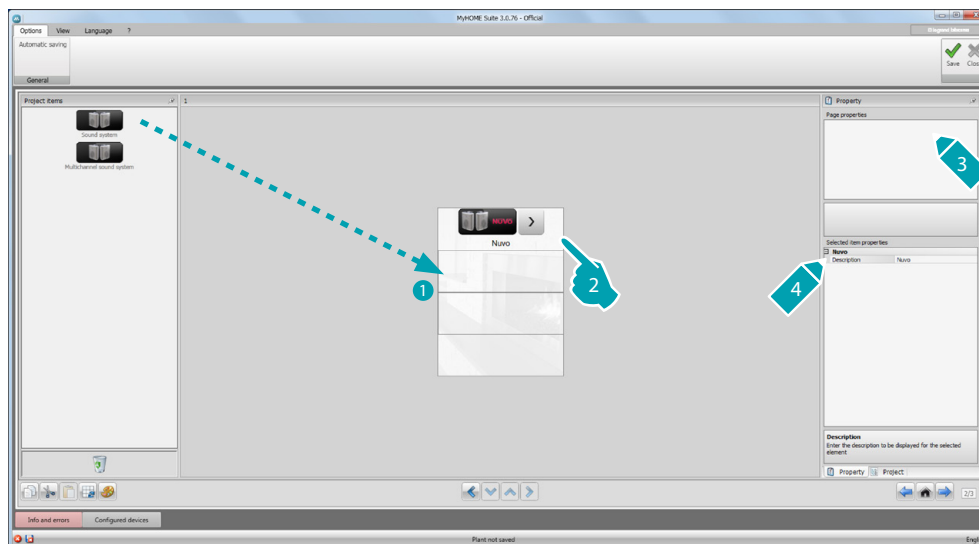
The inclusion in the Home Page of the NuVo object enables you to interface with your NUVO digital audio system, to listen to tracks/radio/playlist/list of tracks in a folder, previously included by yourself in the Top 10 category (using the "NuVo Player" App).



NuVo and Sound System

This section can be used to manage the Sound System or the Multichannel Sound System in conjunction with the NuVo System.

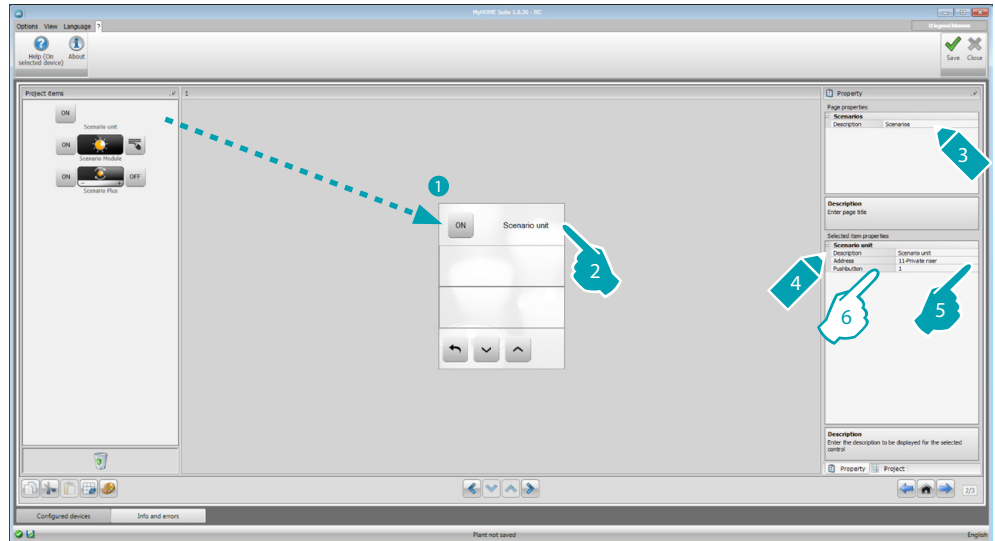
For the configuration of the Sound System or the Multichannel Sound System see [Sound System](#).



In addition to the NuVo function, you can include only one other function, choosing between Sound System or Multichannel Sound System.

Scenarios

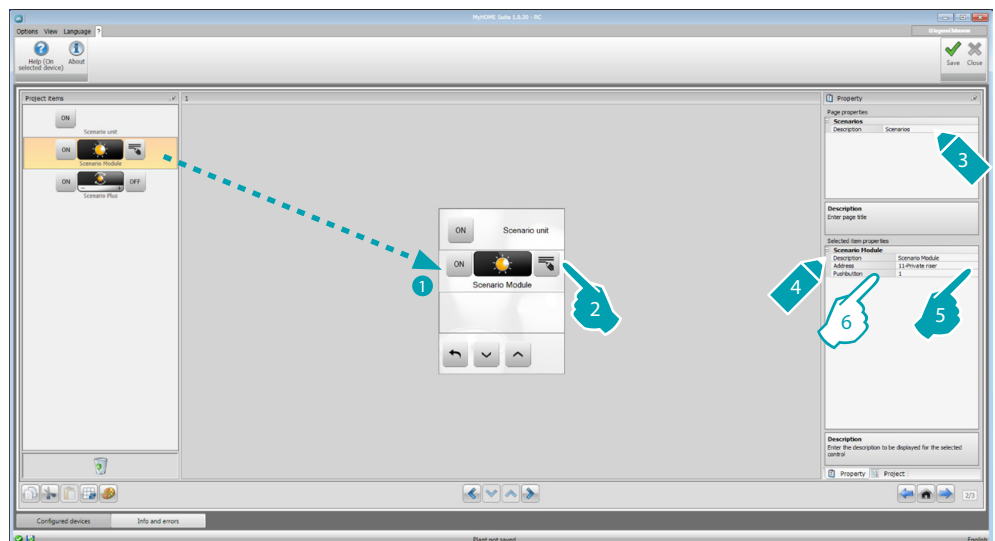
In this section it is possible to include the objects used to enable and edit the scenarios of the system.



6. Configure the object:

- **Pushbutton:** select the number corresponding to the pushbutton of the scenario central unit.

Scenario module



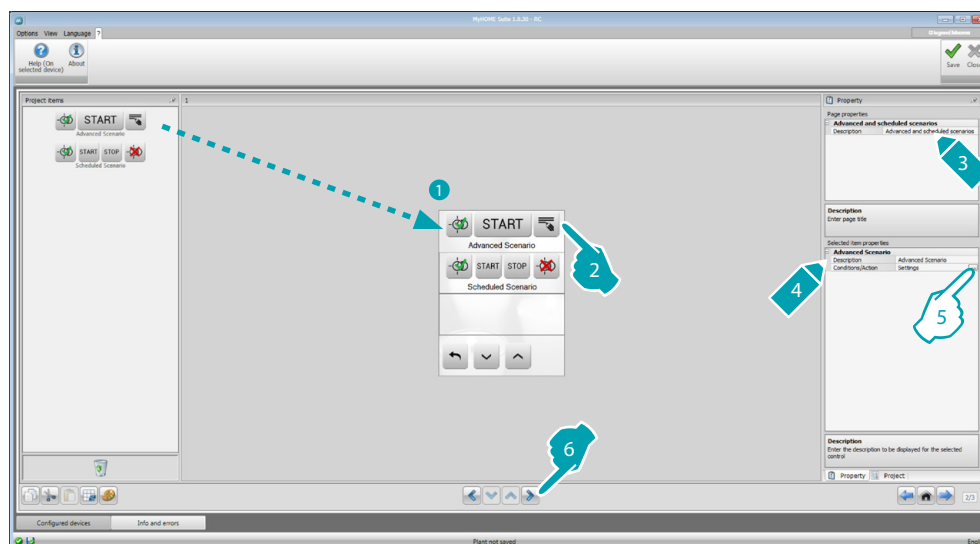
The scenario module may be used to save up to 16 scenarios maximum.

6. Configure the object:

- **Pushbutton:** select the corresponding scenario of the scenario module.

Advanced and programmed scenarios

In this section the user can include the objects capable of sending a command at a set time, or when an event occurs (advanced scenarios), or of controlling scenarios programmed in the scenario programmer (programmed scenarios).

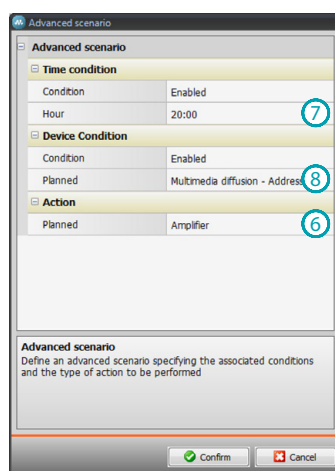


5. Configure the object:
Click to configure the advanced scenario.

Advanced Scenario

Scenario saved on MyHOME_Screen that gives the possibility of sending a command (6) at a set time(7) and when a certain condition occurs (8).

In this example, if at 8.00 p.m. (time condition) the amplifier configured with A1 PF1 is off (device condition), an ON command is generated for the amplifier configured with A1 PF1 (Action).

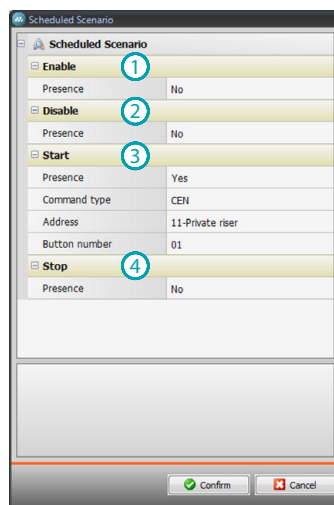


Programmed Scenario

It is possible to intervene on scenarios programmed in the scenario programmer.
The four possible actions are:

- Start
- Stop
- Enable
- Disable

The Enable (1) and Disable (2) commands, which can be configured in pair, are commands that give or remove the consensus to the programmer for the execution of the scenarios themselves. The Start (3) and Stop (4) commands force the start/stop of the scenarios.



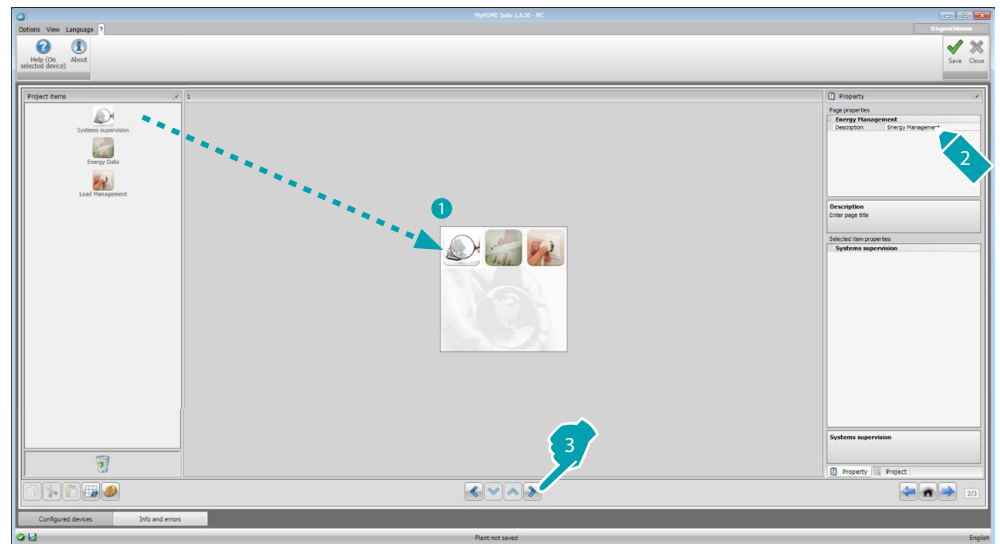
After selecting the presence the user must set:

- **Command type:** define if the command is a CEN or a CEN PLUS command
- **Address:** enter the address of the programmer
- **Button number:** enter the pushbutton number of the programmer.

Energy management

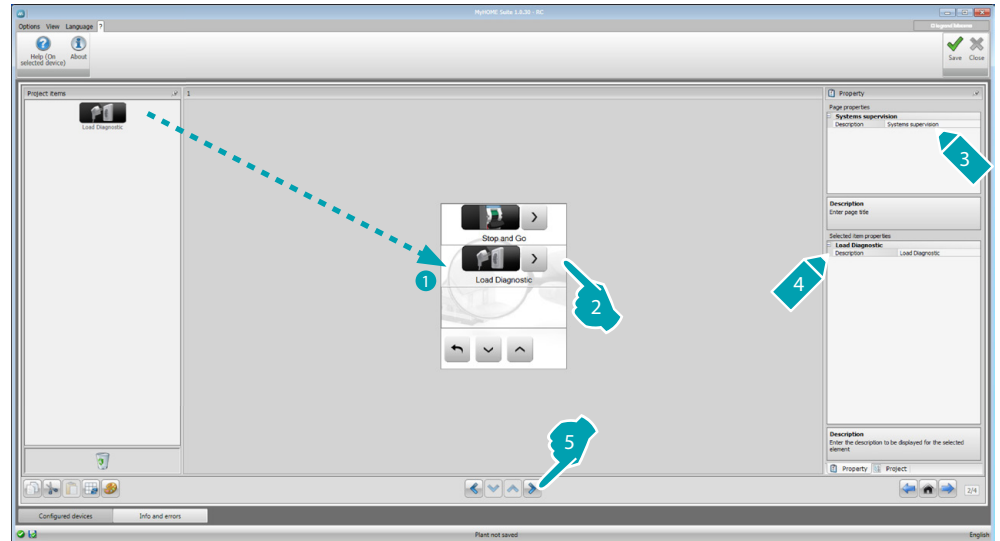
This section includes the following objects for the energy management: System supervision, Energy data, Load management.

- **System supervision**
This can be used to display and control STOP&GO devices, and check that the loads of the My Home system are working correctly.
- **Energy data.**
This can be used to monitor the consumptions and the production of energy for the following: electricity, gas, water, heating and cooling, hot water.
- **Load management**
 - Load management (with load management central unit)**
The load management central unit gives the possibility of controlling the power engaged to prevent the tripping of the meter, by excluding loads (like the oven, the washing machine, the microwave oven, etc.) following priorities set by the installer.
 - Load management (without load management central unit)**
If no load management central unit is installed in the system and advanced actuators are used, this application can be used to check the consumptions of the loads (like oven, washing machine, microwave oven, etc.).



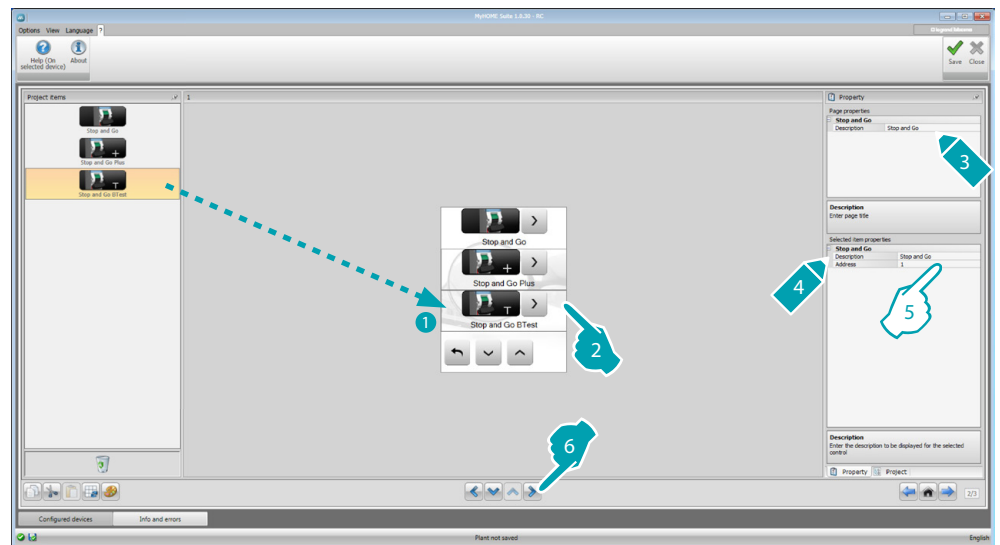
System supervision

This section can be used to configure the Stop&Go devices to display/control, and the loads for which you want to monitor the operation using MyHOME_Screen (advanced loads only).



Stop&Go

This section can be used to configure Stop&Go circuit breakers for the control of the automatic earth leakage relay reset function.



5. Configure the object:

- **Address:** Select the device address value.
The value can be between 1 and 127 and corresponds to the value of the configurators connected to the device configurator socket (e.g.: A1 = "1"; A2 = "2" and A3 = "5" corresponds to address 125).



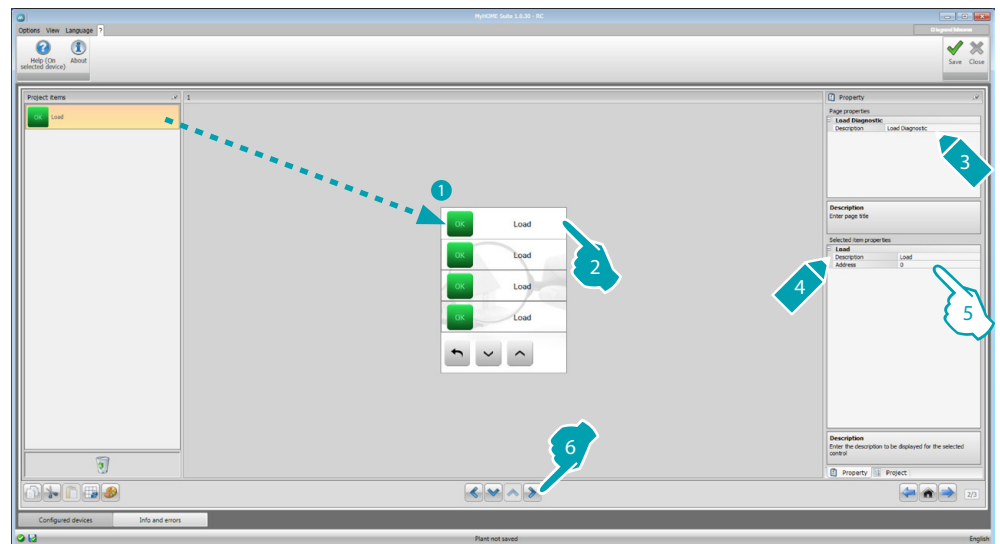
Warning: Up to a maximum of 20 devices may be configured.



Warning: The three devices have the same configuration procedures.

Load Diagnostic

In this section it is possible to include the objects for checking the correct operation of the loads by measuring the earth leakage current absorbed by the same.

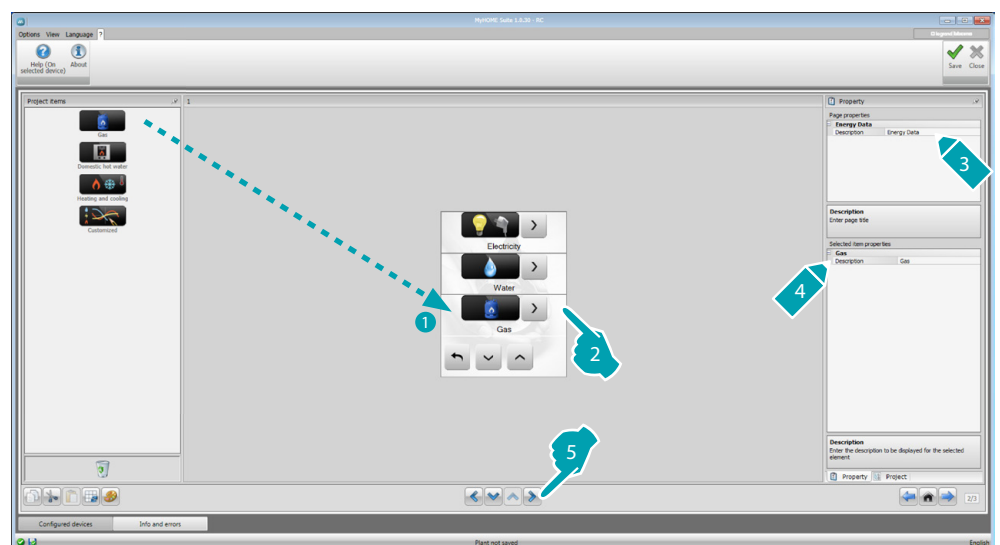


5. Configure the object:

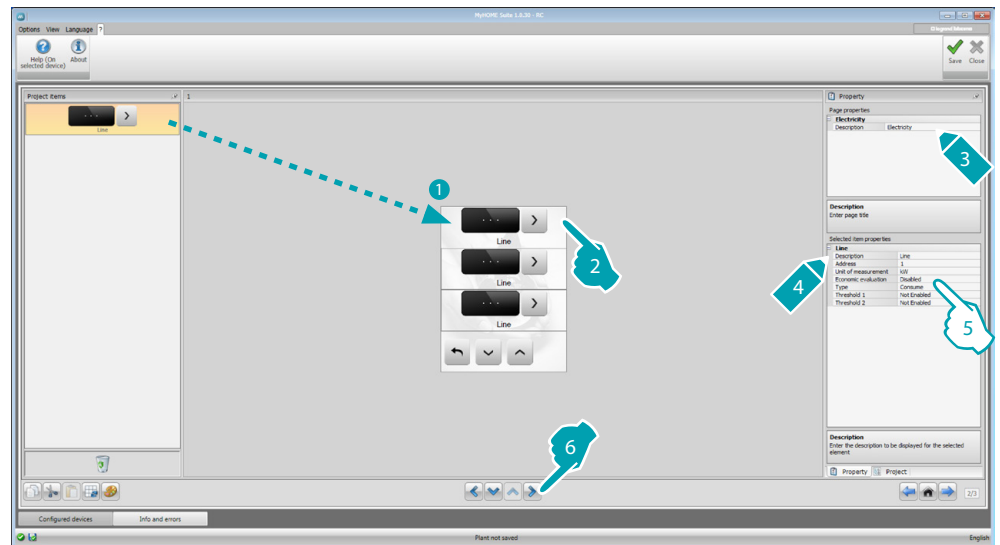
- **Address:** Select the device address value. The value can be between 1 and 63 and corresponds to the value of the configurators connected to the configurator socket of the device.

Energy data

This section can be used to configure the rows for Electricity, Gas, Water, Hot water and Heating/Cooling, setting the economic evaluation parameters, the type (consumption/production), and the alarm thresholds.



Energy rows



5. Configure the object:

- **Address:** select the meter address (1 - 127).
- **Economic evaluation:** enable or disable the [economic evaluation](#) of the measurement.
- **Type:** select the type of measurement between Consumption and Production.



If "Consumption measurement" or "Production measurement" are enabled, the corresponding tariffs must also be set (see "Currency setting").



The economic evaluation is an indicative data.

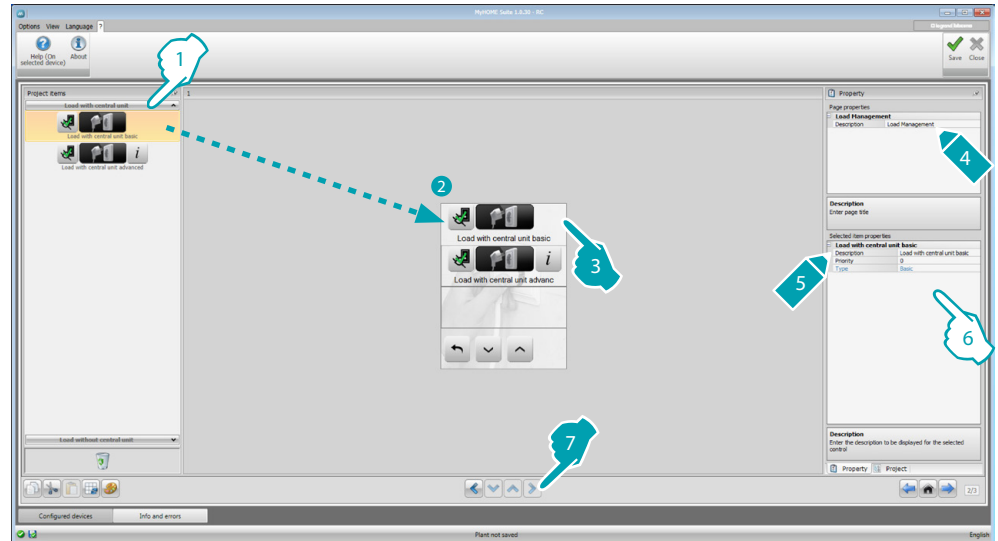


This manual only describes the displaying of electricity. The software manages all the items in the same way.

- **Threshold:** set 2 alarm thresholds, to displayed in MyHOME_Screen (electricity row only).

Load management (with load management central unit installed)

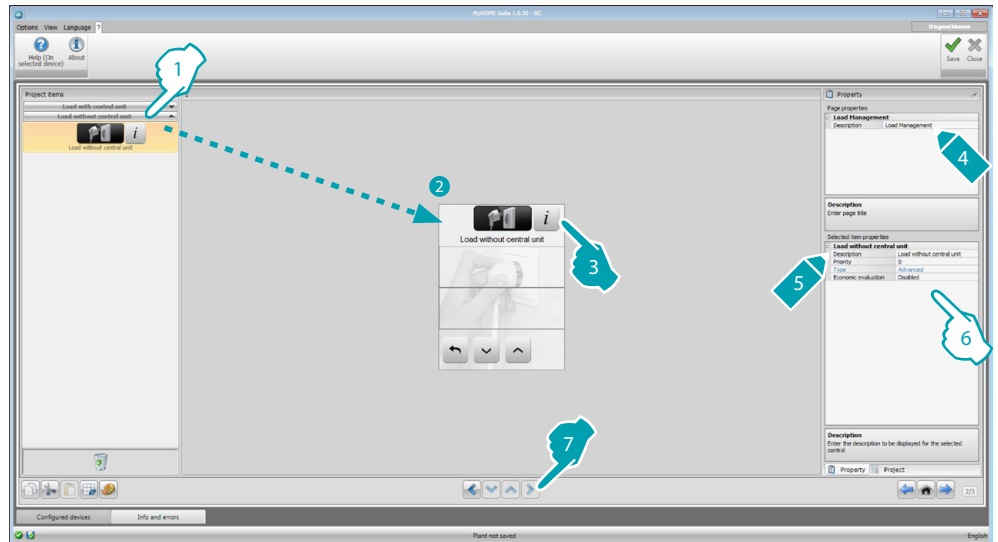
In this section you can insert the loads that will enable you (mode with central unit) to control the powers engaged and, by allocating priorities to the loads, avoid the tripping of the meter.



1. Select load management with central unit mode.
6. Configure the object:
 - **Priority:** select the priority to assign to the load (1 - 63).
 - **Economic evaluation** (load with advanced central unit only): enable or disable the [economic evaluation](#) of the measurement.

Load management (without load management central unit)

If no load management central unit is installed in the system and advanced actuators are used, this application can be used to check the consumptions of the loads (like oven, washing machine, microwave oven, etc.).

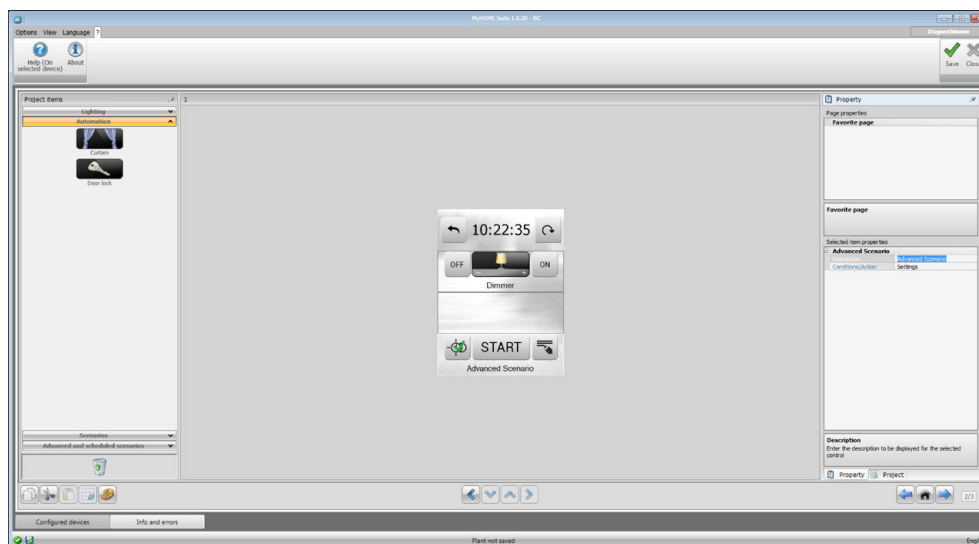


1. Select load management without central unit mode.
6. Configure the object:
 - **Priority:** select the priority to assign to the load (1 - 63).
 - **Economic evaluation:** enable or disable the [economic evaluation](#) of the measurement.

Favorites page

This section can be used to configure the Favorites page, so that the most used functions can be quickly available.

If set in the [Parameters](#) section as default page, the Favorites page is displayed after a certain period of time during which the device is in standby.

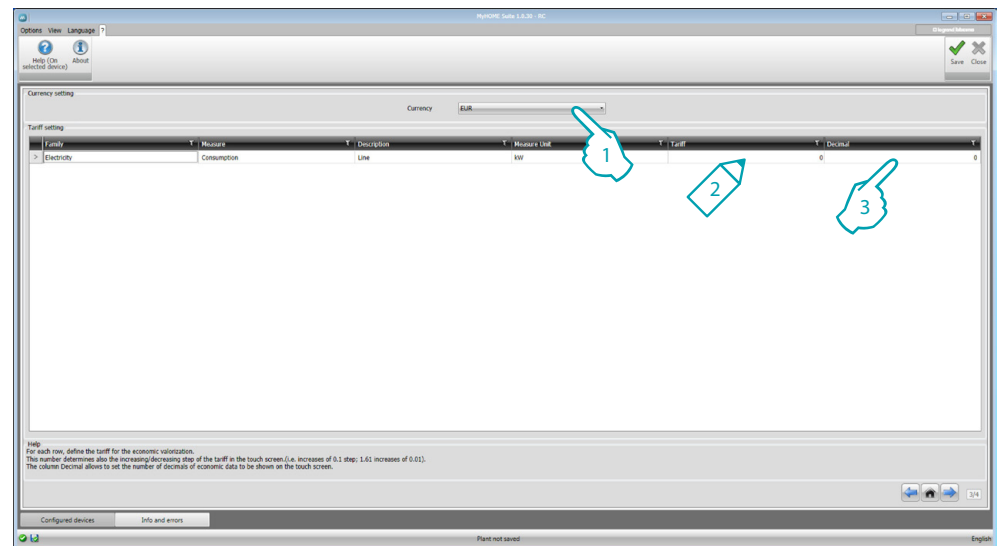


1. In the "Project items" page select the [functions](#) configured in the specific sections, which make up the Favorites page.

Other settings

Economic evaluation setup

This page can be used to set tariffs that will be applied to the consumptions set in the “Energy data” and “Load management” sections.



1. Select the currency.
2. Enter the tariff.
3. Enter the number of decimals to display on MyHOME_Screen for the evaluation.

Other parameters

- **Parameters**

Identification name: Enter the name to assign to MyHOME_Screen

Progressive MyHOME_Screen address: enter the univocal number that identifies the device in the system


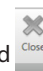
- **Network connections, Ethernet**

Set the network parameters of MyHOME_Screen based on the features of the network where it will be installed

- **Security, authentications**

Open Password: enter the OPEN Password for remote access to MyHOME_Screen.



At the end of the configuration click  to save the project, and  to return to the Global Area and [export](#) the project, or [send it to the device](#).

Legrand SNC
128, av. du Maréchal-de-Lattre-de-Tassigny
87045 Limoges Cedex - France
www.legrand.com

BTicino SpA
Viale Borri, 231
21100 Varese - Italy
www.bticino.com