

Gateway OpenBacnet

Software Manual

MyHOME



Contents

Start	4
Interaction with the device	4
Device configuration	5
Configure Menu	5
Send the configuration	7
Receive the configuration	8
Firmware update	9
Request device info	9
Home page	10
Project configuration	11
Network connections	11
Ethernet	11
General parameters	12
Clock	12
Univocal codes	13
Bacnet ID	13
Security	14
Authentication	14
IP address enabling	14
Bacnet	15

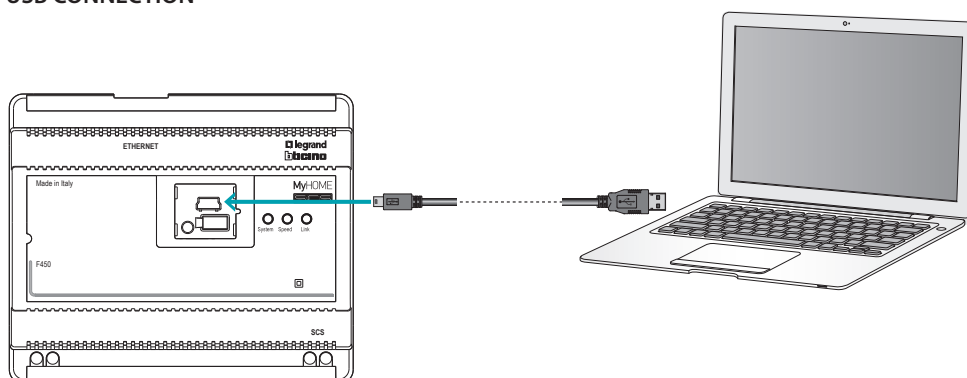
Start

This manual shows the procedures for the configuration of the MH202 Scenario Programmer.

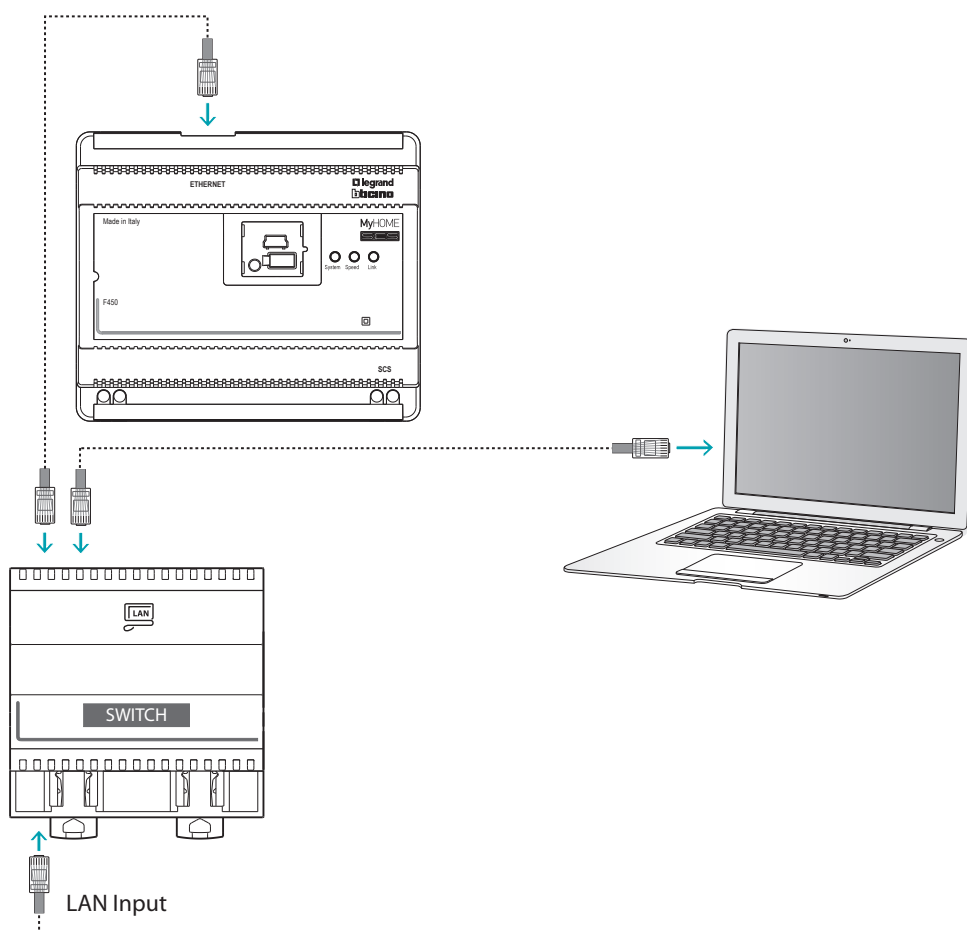
Interaction with the device

To Send, Receive the Configuration, Update the Firmware and Request Device Info, it is first of all necessary to connect the device to a PC, and make sure that the right port has been selected. Connect the Web Server to the PC using a USB-mini USB cable, or an Ethernet cable. To ensure that the communication is successful, the device must be connected to the BUS.

USB CONNECTION

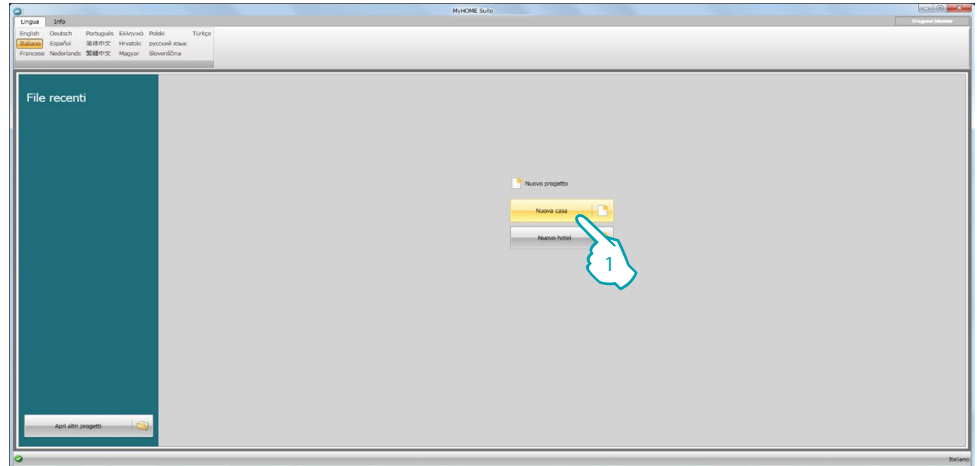


ETHERNET CONNECTION



Device configuration

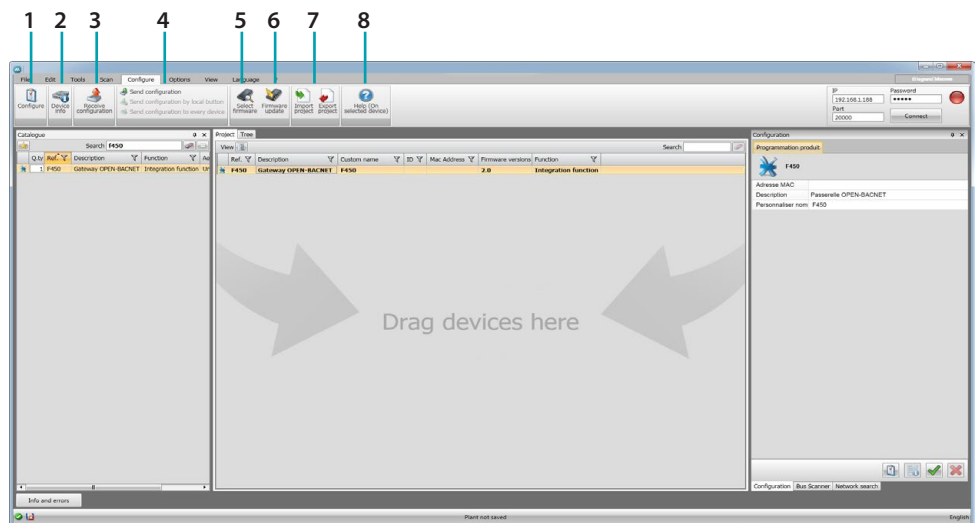
To configure a device you can create a new project, or open an existing one, which can then be changed and resent to the device.



1. Click to enter the software dedicated to the configuration of a new home system.

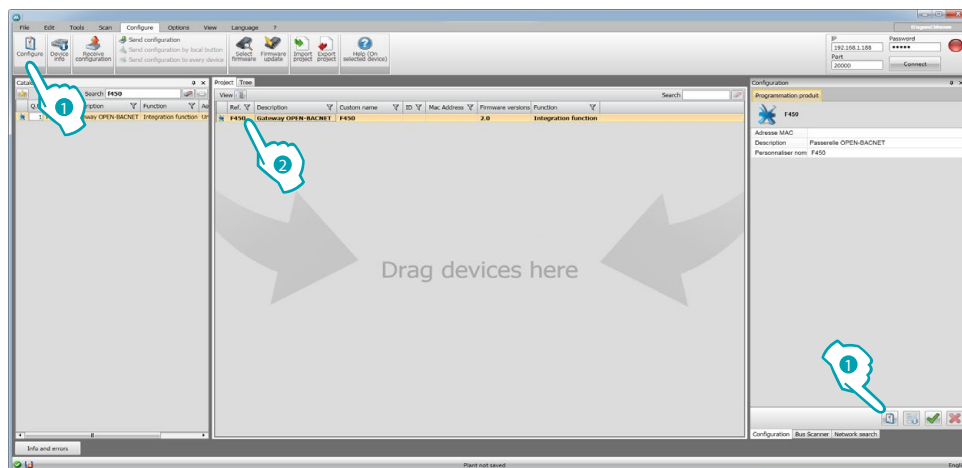
Configure Menu

The configuration can be performed inside the global area, in the Configure section of the software, using some dedicated device management pushbuttons.



1. Open the specific device configuration area
2. Request device info
3. Receive the configuration from the connected device
4. Send the configuration to the connected device
5. Select the firmware for the device
6. Update the device firmware (it only appears after the firmware has been selected)
7. Import project
Export project
To import or export the configuration project created in the specific area, select the device, and click the corresponding key
8. Open the help file for the selected device
To interact with the device, first select it, and then click the desired function keys.

To go to the specific device configuration area click **Configure** ①, or double click the device ②



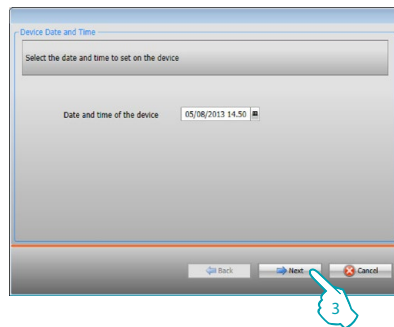
Send the configuration

After completing and saving the programming, the configuration must be sent to the devices.

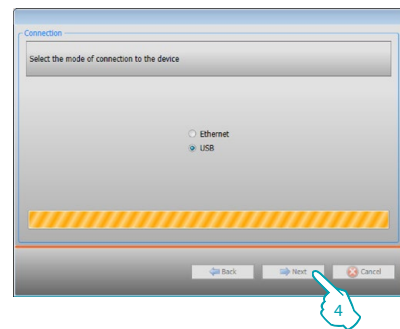
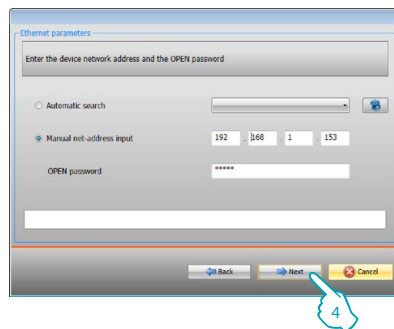
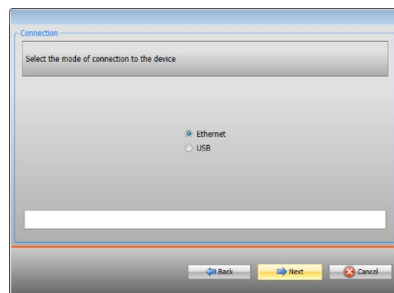
Procedure:

1. Connect the device to a PC through the Ethernet network or through USB
2. In the Configure toolbar select **Send Configuration**.

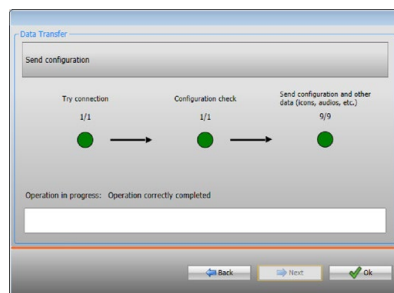
The screen for setting the date and time appears.



3. Select **Next** to choose the mode of connection between the device and the PC:



4. When **Next** is selected, the configuration is uploaded to the device.

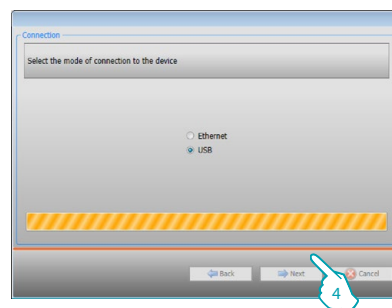
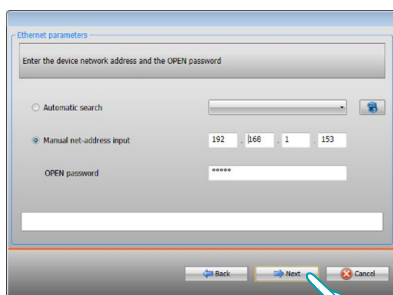
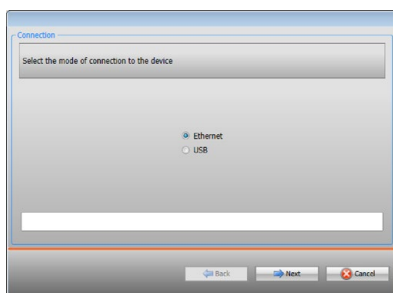


Receive the configuration

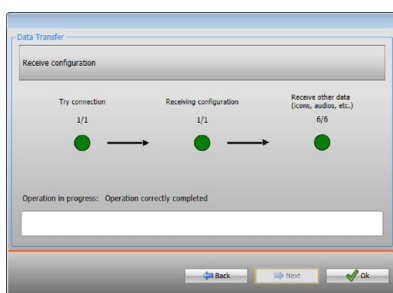
It gives the possibility of receiving the current device configuration. Once received, this can be modified, saved, and obviously sent back to the device.

Procedure:

1. Connect the device to a PC through the Ethernet network or through USB.
2. In the Configure toolbar select **Receive the configuration**.
3. Select the mode of connection between the device and the PC:



4. When **Next** is selected, the configuration downloading procedure starts.



Firmware update

It gives the possibility of updating the device firmware

Procedure:

- Connect the device to a PC.
- From the **Configure** pull-down menu select **Select Firmware**.

A window appears, enabling the user to browse the file containing the firmware file with .fwz extension.

- Select the file and click **Open** to continue.
- Select **Firmware update** to continue.

For the connection procedures see the Send Configuration section.

Request device info

It gives the possibility of displaying some information on the device connected to the PC.

Procedure:

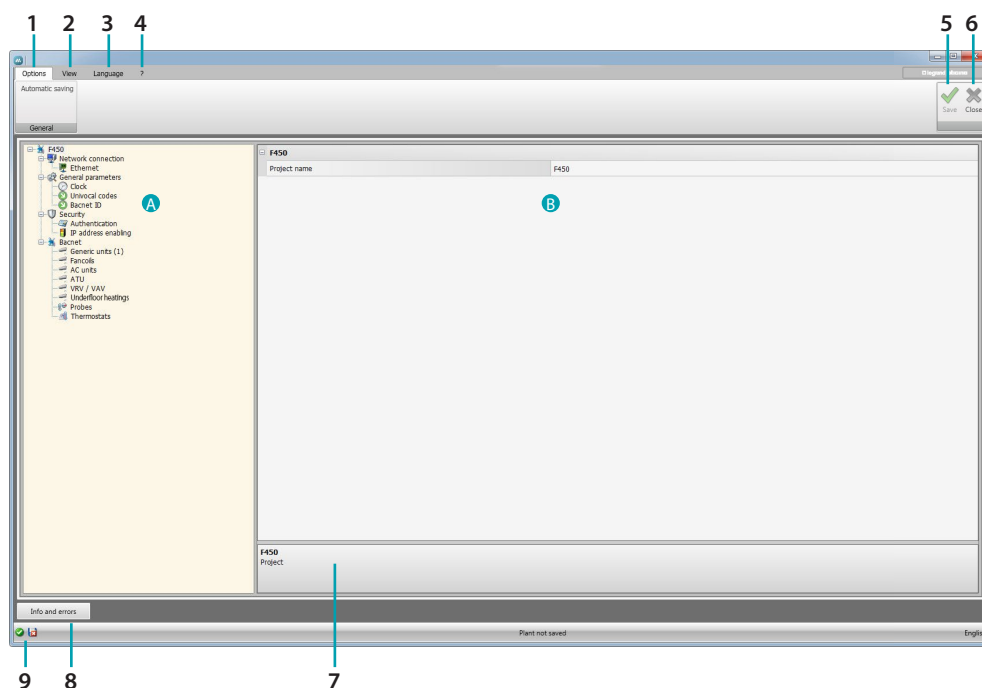
- Connect the device to a PC.
- From the **Configure** pull-down menu select **Device Info**.

For the connection procedures see the Send Configuration section.

Click Next to display a screen containing the device hardware and software features.

Home page

The user accessing the program is taken to the start page, which shows all the configuration parameters. The screen mainly consists of 2 areas: on the left side **A** are the parameters and the functions to configure, organised in a tree structure. Based on the selection made, the section on the right **B** shows the fields to select or insert.



1. Options



Activate automatic save

2. View.



Display/hide the configured objects



Display/hide the info and error area



Show the default settings

3. Language

Select the software interface language

4. Display the Guide icons (Software Manual) and some software information .

5. Save the project.

6. Close and return to the Global area.

7. Function description.

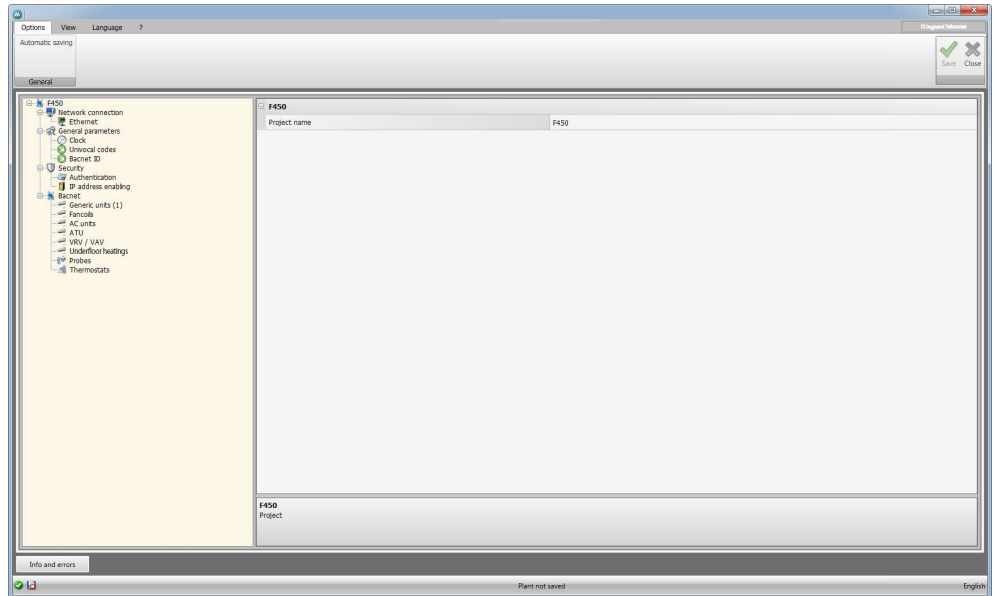
8. Open the section showing any information, or error messages.

9. File saving and saving path display.

Project configuration

This section can be used to configure a new project, or to change an existing one.

1. From the File menu select New. The following window appears.



2. Enter the configuration data in the various zones.

Network connections

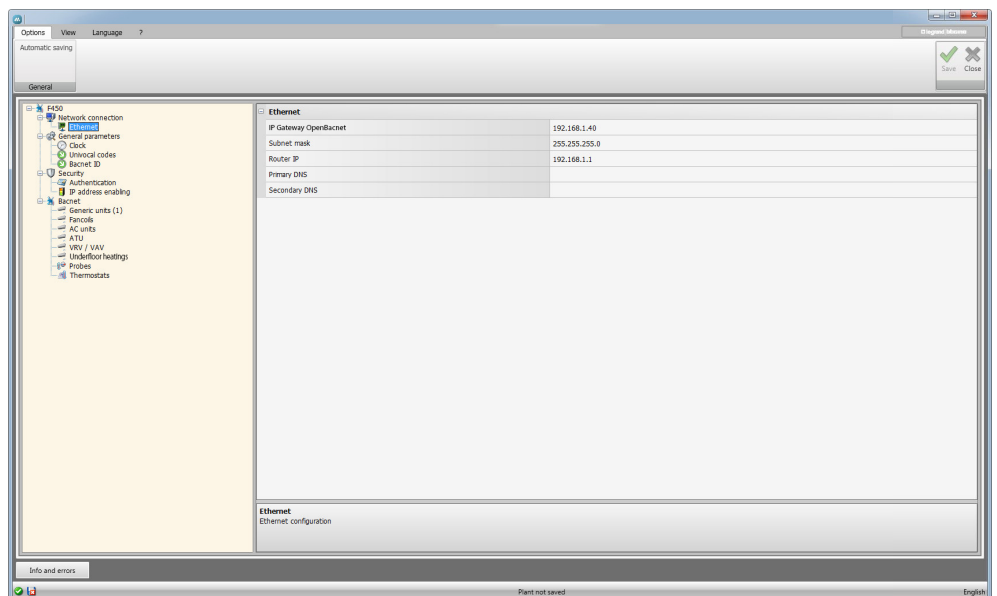
The technical parameters for the network connections are configured in this section.

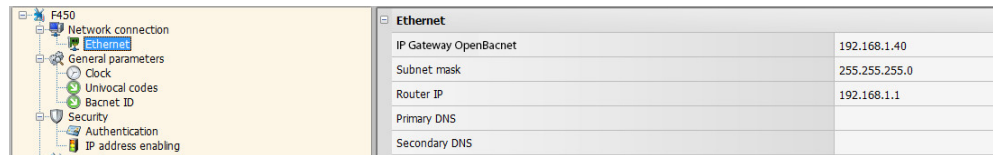
Ethernet

This screen can be used to enter the parameters for connection to the Ethernet network.



Before editing the default values, contact the network administrator, as well as making the service inactive, incorrect values could cause malfunctions in the communication of other network equipment.





Configuration:

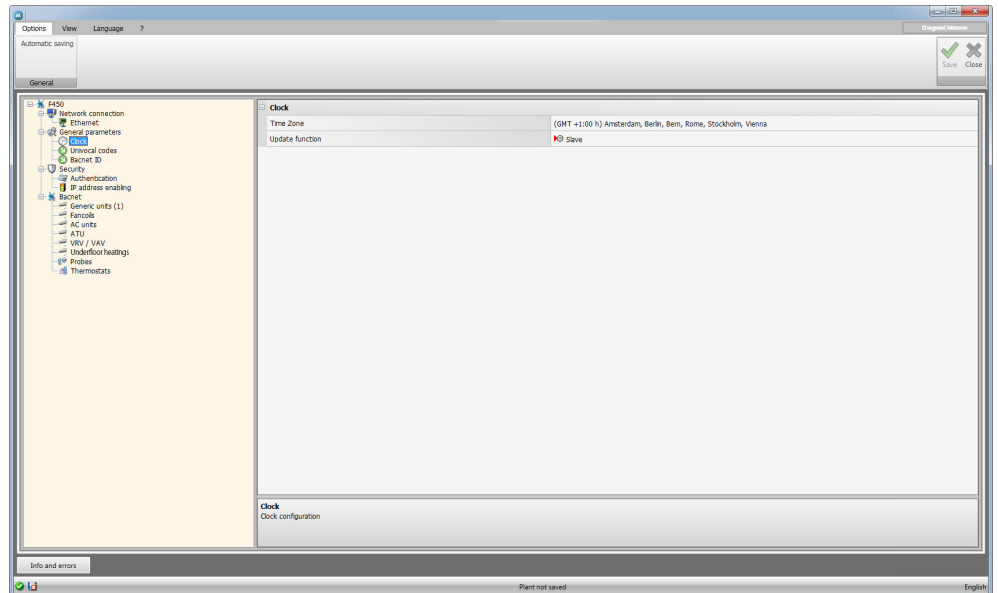
- Web server IP and Subnet mask**
 Enter the typical parameters of TCP/IP protocol networks required for identifying the device within the local network. Remember that the device needs a “static” (fixed and unique) IP address to be able to work correctly.
- Router IP**
 Enter the IP address of the router, if any. If there is a router the field must be filled in, to ensure the outgoing Services, such as sending e-mails.
- Primary DNS and Secondary DNS**
 Enter primary and secondary IP address of the Internet Service Provider (ISP) supplied at the time of subscription.

General parameters

This section is used for the configuration of the General device parameters.

Clock

This screen is used to enter the parameters for managing the time the device and the system will refer to (Master function active).

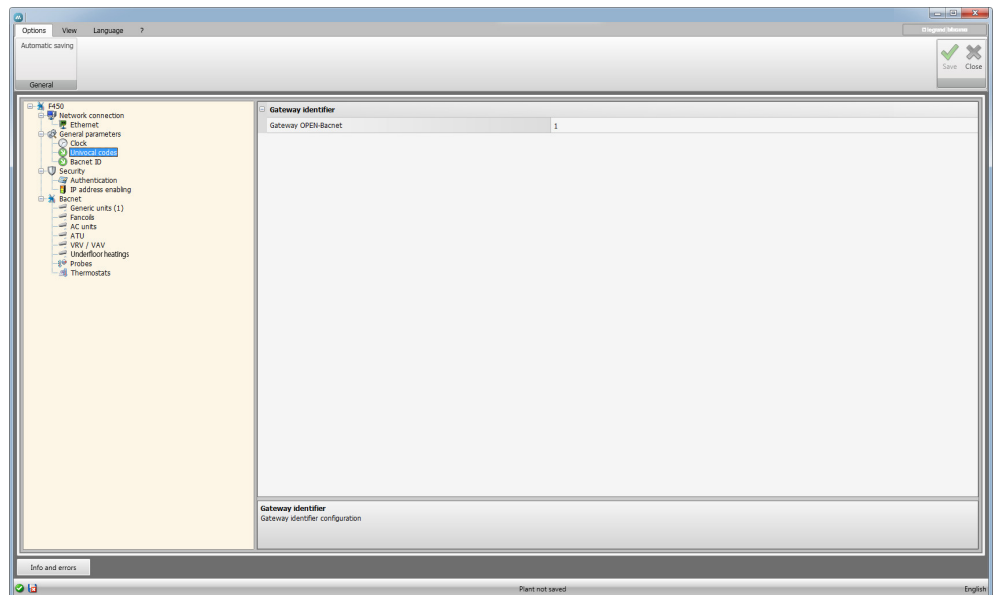


Configuration:

- Time zone**
 Enter the local time zone.
- Update function**
 Define if the device is a system time synchronisation “Master”, in which case the internal clock of the device will be used as time reference by other devices of the MyHOME system.

Univocal codes

This screen is used to configure the gateway ID.

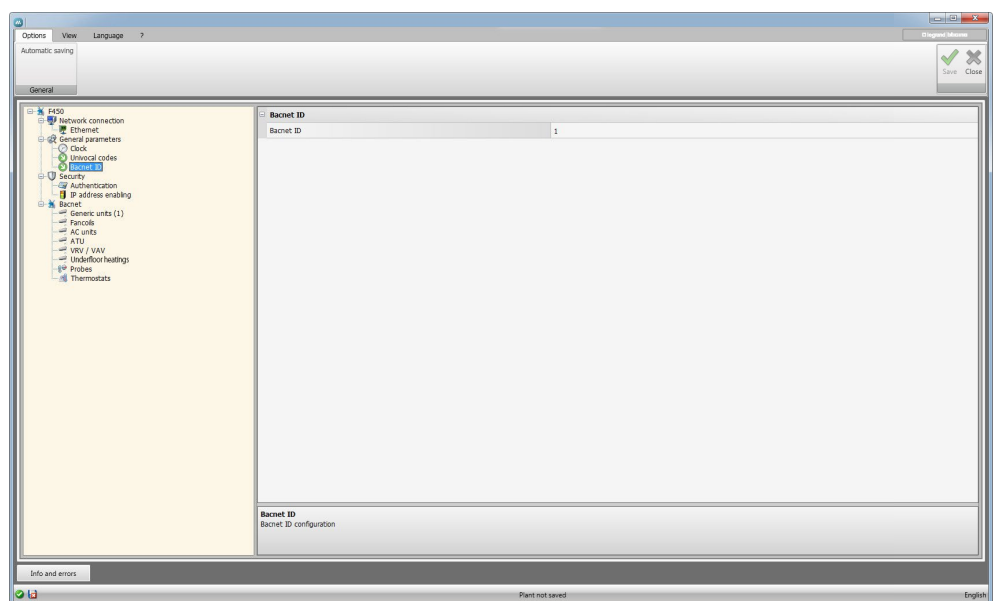


Configuration:

- **OPEN-Bacnet Gateway**
Enter a unique ID number for the OPEN-Bacnet gateway function.

Bacnet ID

The Bacnet address can be entered in this screen.



Configuration:

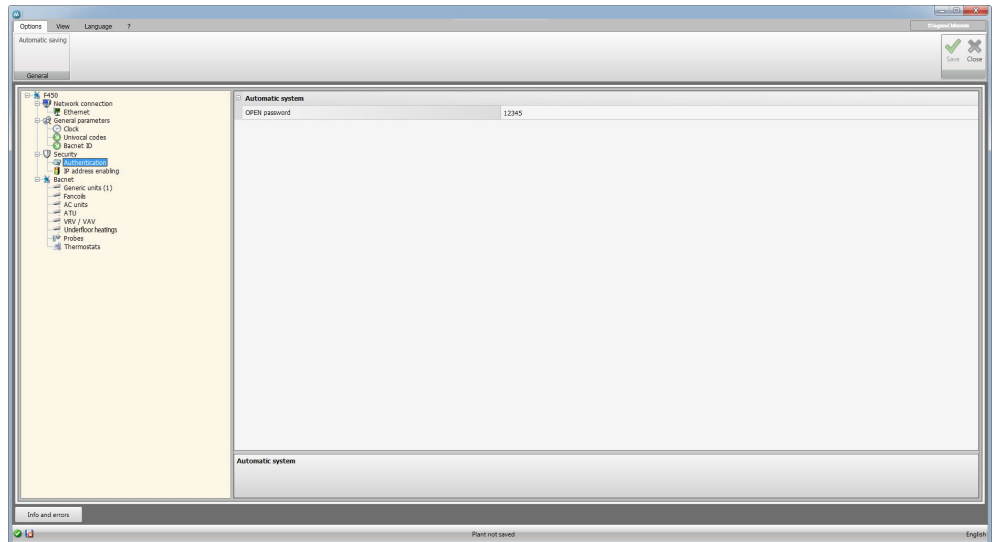
- **Bacnet ID**
Enter the Bacnet address.

Security

This section is used to set the safety parameters.

Authentication

This screen can be used to set the authentication parameters for access to the device.



Configuration:

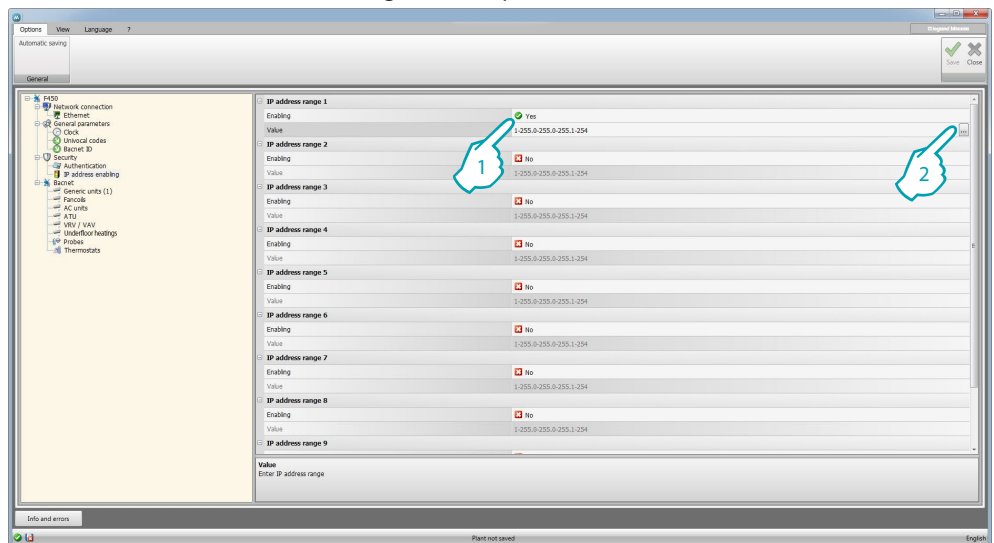
- **OPEN Password**
Enter the OPEN password for the device.



Attention: The default OPEN password in the devices is 12345.

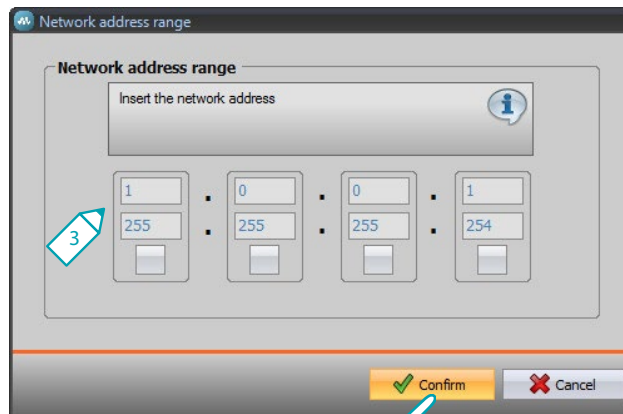
IP address enabling

This window can be used to enter up to 10 IP address ranges with connection to the device enabled, without the need for entering the OPEN password.



Procedure:

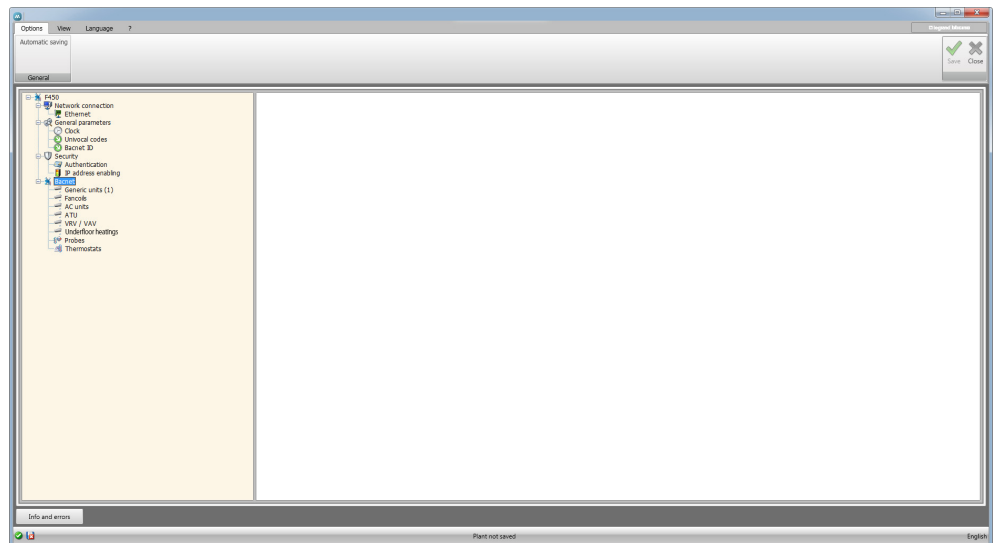
1. Enable the interval of IP addresses.
2. Click.



3. Enter the range of network addresses.
4. Confirm.

Bacnet

This section can be used to configure the temperature control items of the Bacnet system to be controlled from the dedicated page (HVAC) of the MyHOME_Screen.



Items available:

- Generic units
- Fancoils
- AC units
- ATU
- VRV / VAV
- Underfloor heating
- Probes
- Thermostats

Configuration:

- **Description**
Enter the item description (15 characters max.)
- **Device area / address**
Enter the address of the object to be used in the MyHOME_Screen configuration

Legrand SNC
128, av. du Maréchal-de-Lattre-de-Tassigny
87045 Limoges Cedex - France
www.legrand.com

BTicino SpA
Via Messina, 38
20154 Milano - Italy
www.bticino.com