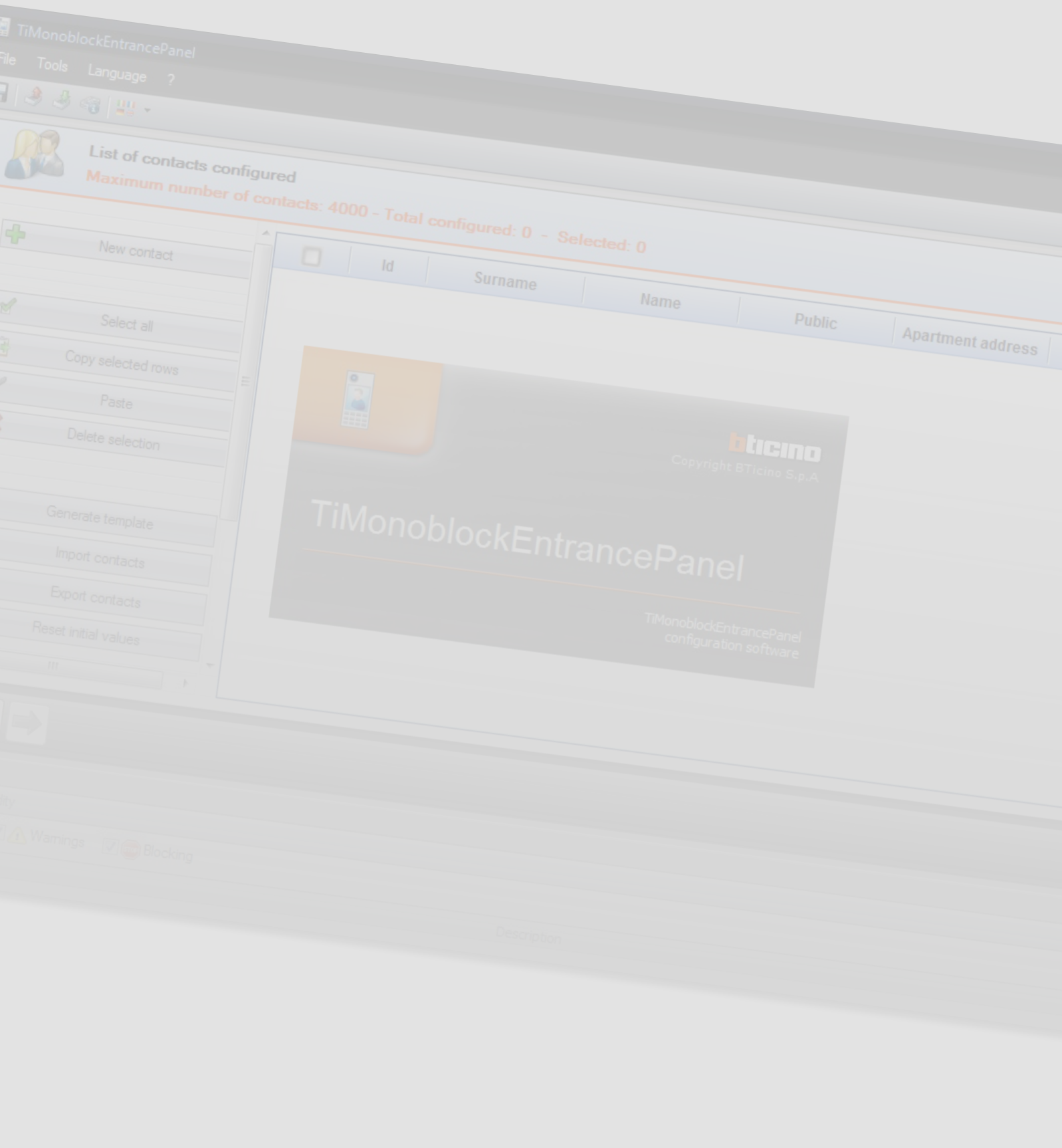


TiMonoblockEntrancePanel

Software Manual



Index

Hardware and Software Requirements	4
Hardware Requirements	4
Software Requirements	4
Fundamental concepts	4
Start screen and function selection pushbuttons	5
Connecting the device to a PC	6
Firmware update	7
Parameters configuration	9
Main screen	9
Device information	9
Language	10
Display settings	10
Welcome message setup	11
Illumination	12
Acoustic signalling	12
Installation configuration	13
Call settings	13
Installer settings	14
Access control	15
Address book management	16
Parameters	16
Address book	17
Contact management tool	17
Contact ID details	18

Hardware and Software Requirements

Hardware Requirements

- PC with Pentium 300 MHz processor minimum
- 1 GB RAM memory.
- SVGA graphic card, resolution 800x600.
- CD-ROM reader.
- Mouse.

Software Requirements

- Windows XP 32BIT, Windows Vista 32BIT or Windows 7.
- Microsoft™ framework.NET 3.5 SP1 available in the CD supplied with the device.

The updated requirements can always be found on the www.bticino.com website.

Warning: the TiMonoblockEntrancePanel software is the fundamental tool for the configuration of the antitamper entrance panel 308040.

This software is protected by exclusive rights, owned by the company BTicino SpA.

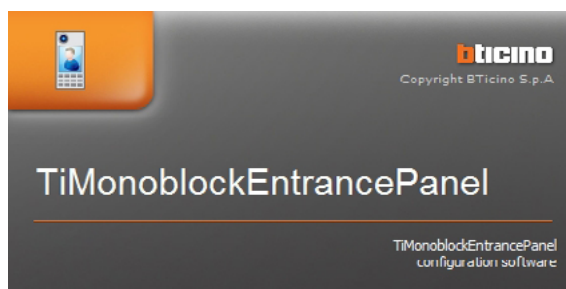
Fundamental concepts

The TiMonoblockEntrancePanel software is used to configure entrance panels 308040 by creating a project, which can be saved for future changes or updates; the software also performs a configuration check, and notifies any configuration errors.

TiMonoblockEntrancePanel also manages the contact list to be transferred to the entrance panel. For each contact, in addition to name and surname, also the access and call code details may be included.

With TiMonoblockEntrancePanel, it is also possible to update the firmware version of the devices (speaker module and LCD module), with new revisions issued by BTicino.

TiMonoblockEntrancePanel must not be used for the configuration of entrance panels intended as part of systems with access control. In this case, the configuration must be completed using the menu of the device, while the address book is managed by the access control system.



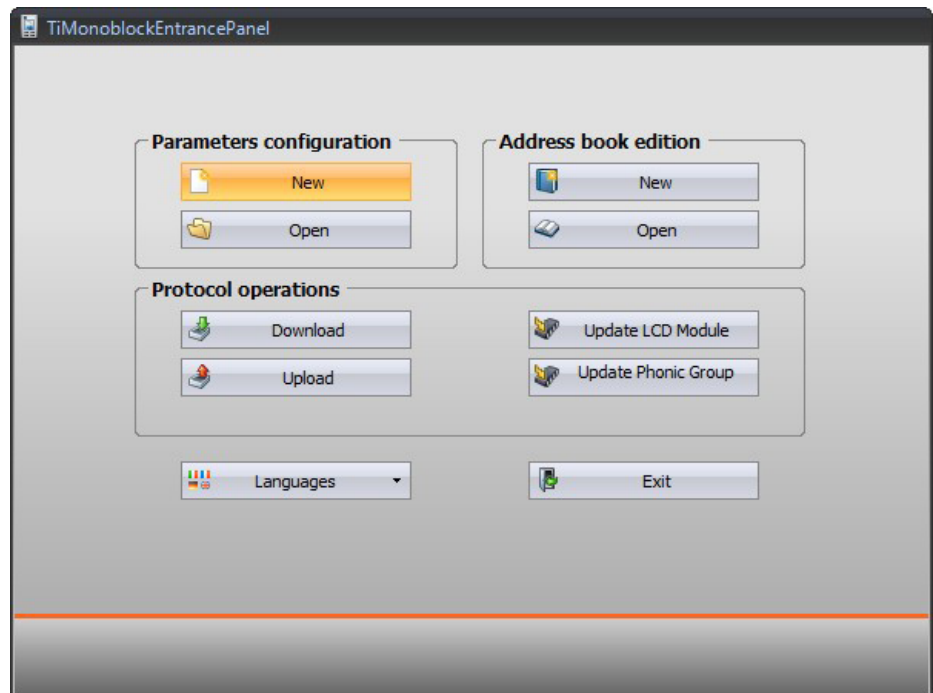
Warning: for correct operation of the TiMonoblockEntrancePanel software, the devices must be installed following the instructions supplied with the devices themselves.

The illustrations of this manual are only indicative, and may not give an accurate representation of the product features.

Start screen and function selection pushbuttons

When the program is initialised, the start screen appears, where the user can:

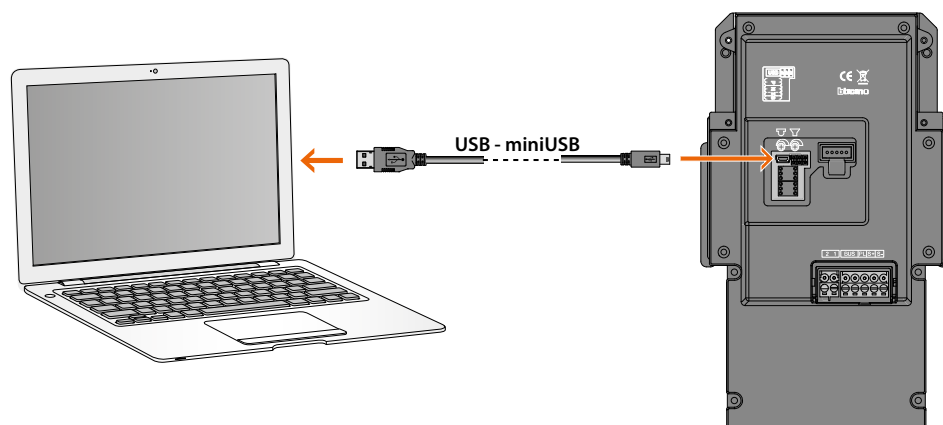
- Create a new configuration project
- Open an existing configuration project
- Create or edit the address book
- Acquire the configuration from the devices
- Display device information
- Update the device firmware
- Select the application language



Connecting the device to a PC

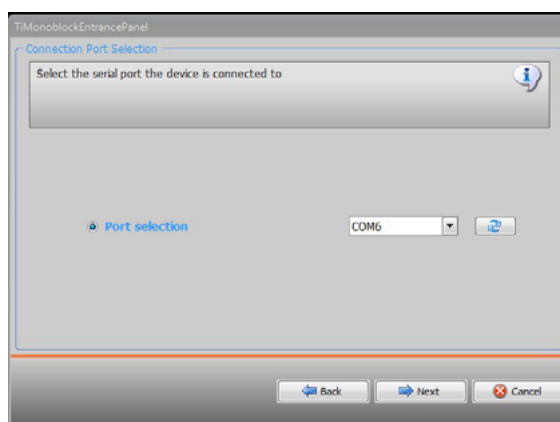
To Send or Receive the configuration, Update the firmware and Request device info, the device must be connected to the PC using a USB-miniUSB cable.

In order to update the firmware, the device must be powered.



Once the device is connected, the user may be asked to install the drivers; **this must always be done when requested.**

The device connected using the USB cable is recognised by the PC as a virtual port (VIRTUAL COM), and TiMonoblockEntrancePanel automatically recognises the address.



The creation and the saving of a project to a file do not require the PC to be connected to the device.

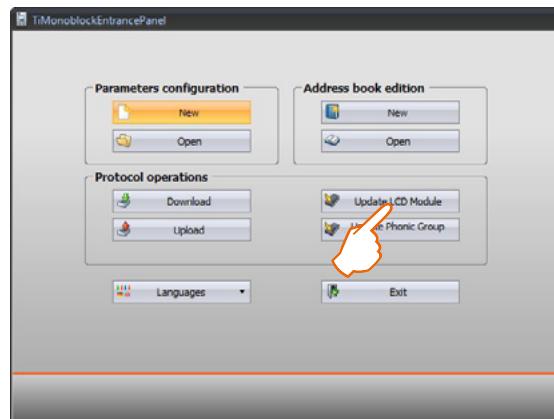
Firmware update

Entrance panel 308040 consists of two integrated devices: the speaker module, and the LCD module, which need their own firmware programs.

The procedure described below is used to update the firmware, and applies to both devices.

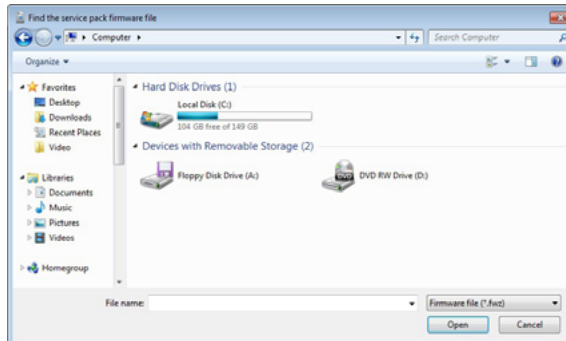
Procedure:

- Select **Update device** (e.g. LCD module)

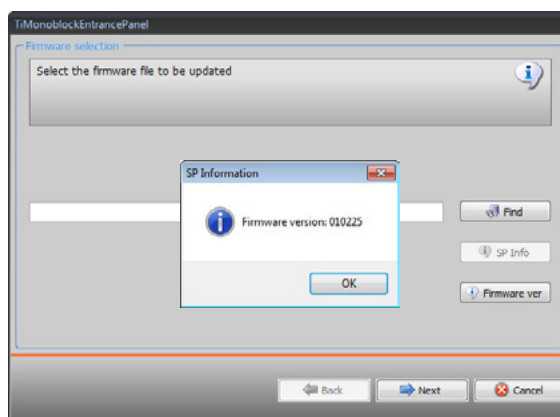


The following screen appears, prompting the user to search for the Firmware file with extension **.fwz**

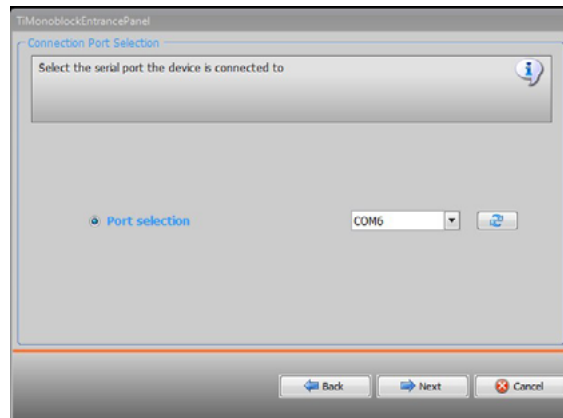
- Select the file and click to continue.



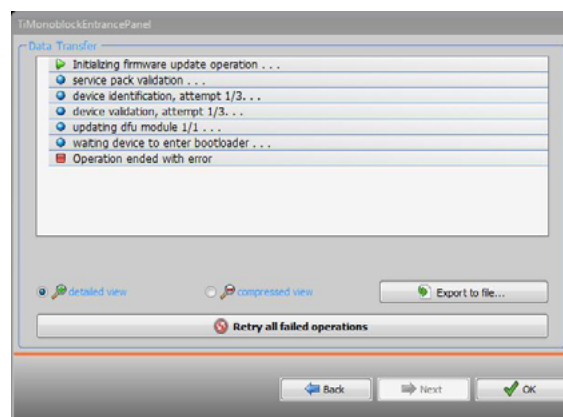
- Before continuing, check the current device firmware version by clicking **SP Info**
- To continue click **Next**



- Power the device by connecting it to the SCS BUS
- Connect the device to the PC and wait for it to be recognised by the software
- Click **Next**



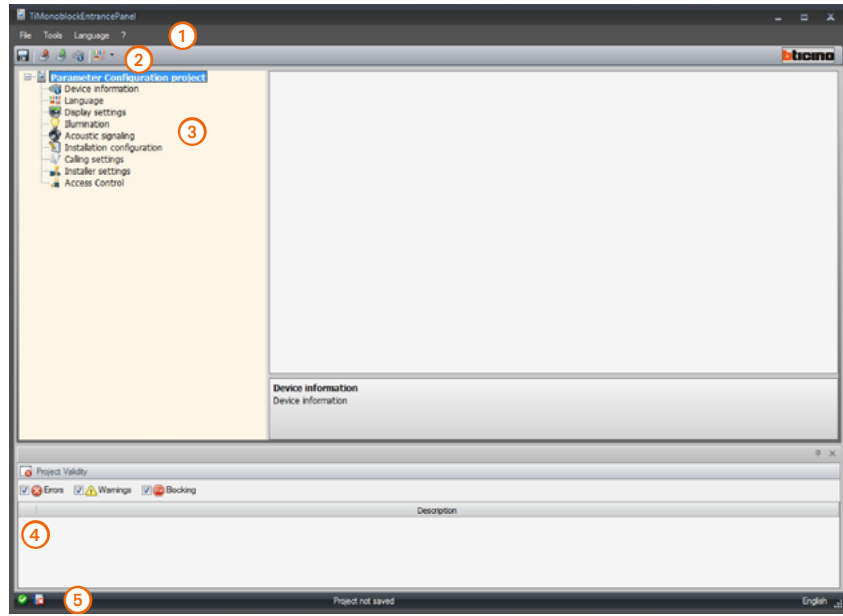
- Any errors occurred during the update procedure will be indicated.



Parameters configuration

Main screen

The main screen simply shows the list of the configurable parameters described below; the bottom section lists any configuration errors, which unless resolved may prevent the project from being sent to the device.



1. Pull-down menu
2. Pushbutton menu
3. Configurable parameters
4. Configuration errors notification area
5. File saving indication

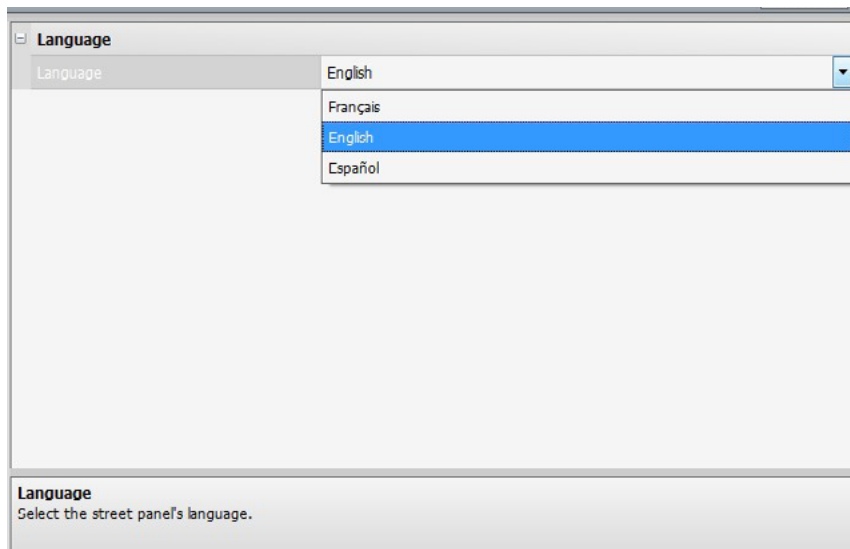
Device information

The screen shows the firmware versions detected using the Request Device Info function for the LCD module and the speaker module making up the entrance panel connected to the PC.

Device information	
LCD module version	
Phonic group version	
System description	Two wires and keypad
Device information	
Device information	

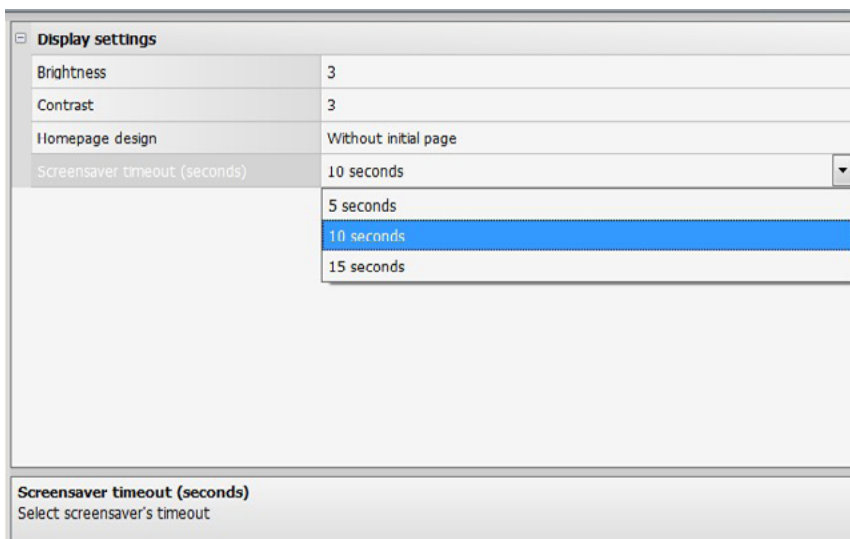
Language

Select the desired language among those found in the menu, the default language is French.



Display settings

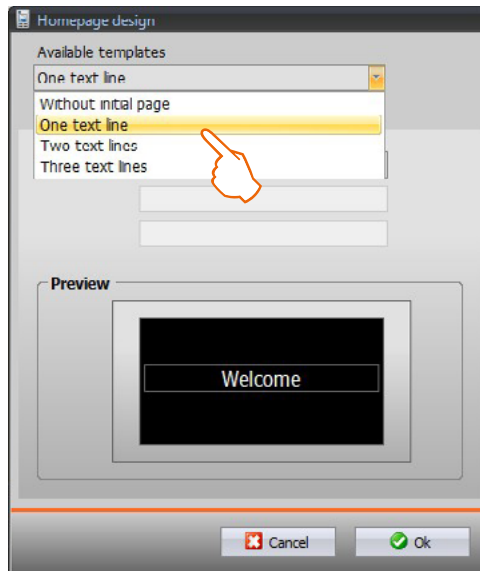
The device display is supplied with standard settings, which can be modified to suit the location of installation.



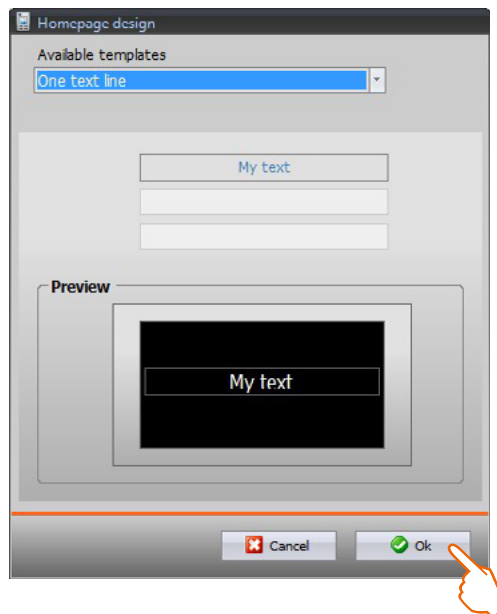
- **Brightness**
Brightness adjustment from 1 to 5 (standard 3)
- **Contrast**
Contrast adjustment from 1 to 3 (standard 3)
- **Homepage design**
The user can enter a welcome message to appear on the homepage screen. The maximum available space for the message is three lines of 16 characters each (see the next paragraph)
- **Screensaver timeout**
This setting defines the length of time the welcome message will be displayed on the screen for; it may be set to 5, 10, and 15 seconds.

Welcome message setup

Select the number of lines to use.



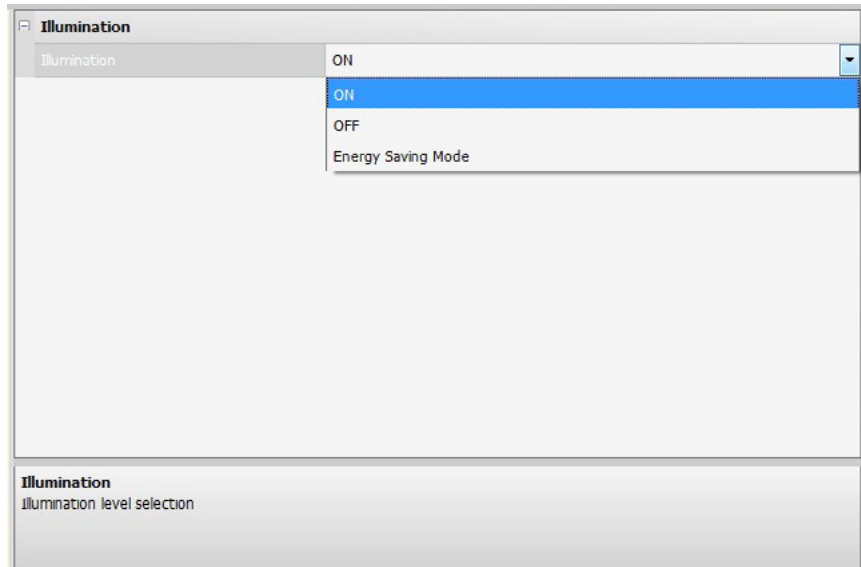
Enter the desired text (16 characters maximum per line), the result may be viewed in the preview area.



Click **OK** to confirm.

Illumination

This menu can be used to set the mode of illumination for the entrance panel keypad.



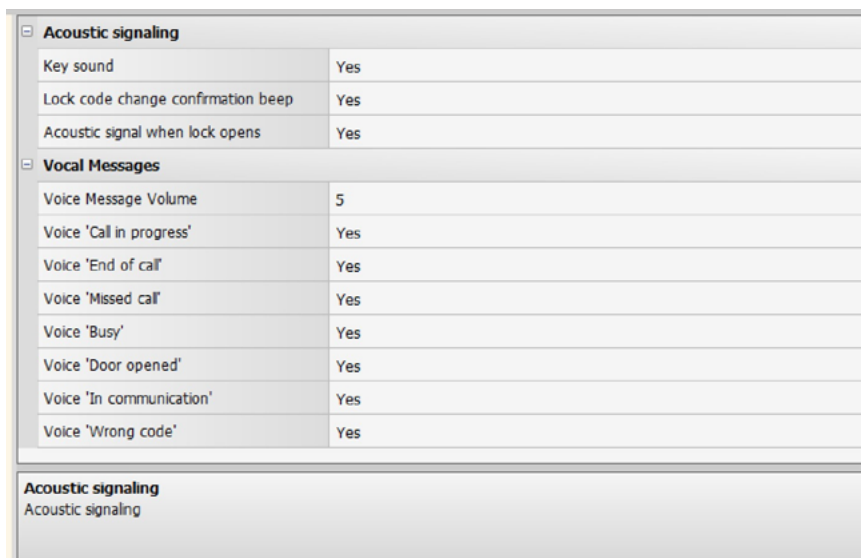
Keypad illumination mode:

- ON = keypad always on
- OFF = keypad always off
- Energy Saving Mode = the keypad light only comes on when the keypad is being used.

Acoustic signalling

This menu can be used to enable/disable:

- the sound when the keys are pressed;
- the lock code change confirmation beep, as follows:
 YES = short BEEP if the code is correct
 extended BEEP if the code is wrong
 NO = no acoustic signal
- the beep when changing the lock code
- the voice messages for the notification of events (e.g. "Call in progress", "End of call" etc.) can only be enabled/disabled individually, and adjust the volume of the voice confirmation messages.



Installation configuration

These configurations are only possible if the entrance panel is not configured physically.

Installation configuration	
Local Address (P)	1
Switchboard's address	0
Riser Base Address	No riser

Installation configuration
Installation configuration

- **Local Address (P)**
Entrance panel address (0 to 99).
- **Switchboard address**
Switchboard address, if applicable (0 to 15).
- **Riser base address**
Installation riser address (no riser 1 to 39)

Call settings

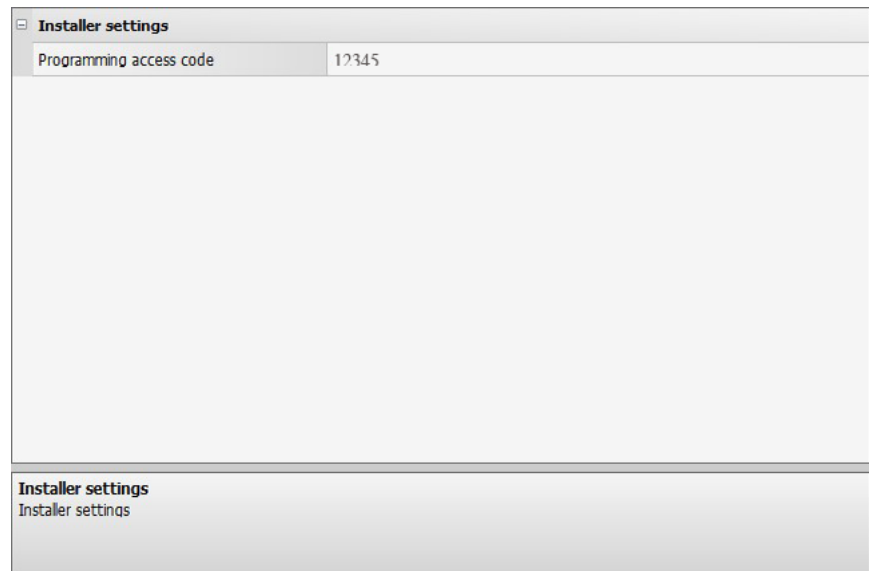
The call configuration entails the following settings:

Calling settings	
General call	<input checked="" type="checkbox"/> No
Calling tone	Tone 0
Lock time	3 seconds
Recall	<input checked="" type="checkbox"/> No

Calling settings
Calling settings

- **General call**
The call is forwarded to all the handsets of the system
- **Calling tone**
This is used to set the ringtone, with the possibility of different ringtones for calls from different entrance panels.
- **Lock time**
The time of activation of the relay of the associated lock (it can be set between 1 and 10 seconds, or for as long as the lock release pushbutton is pressed).
- **Recalls**
The default setting does not include call repetition in case of no answer. With this function, it is possible to activate the call and set the number of repetitions.

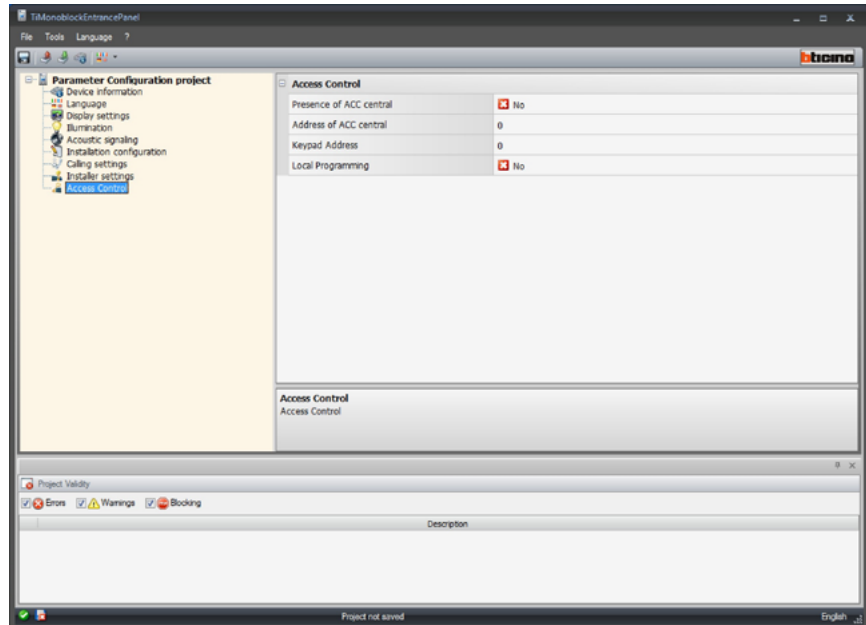
Installer settings



- **Password**
The password gives the installer the possibility of accessing the settings menu. The default password is 12345. We recommend that you change this password to one of your choice as soon as possible.

Access control

This menu can be used to configure the parameters of the access control system. These configurations are only possible if the entrance panel is not physically configured.



- **Presence of ACC central**
By enabling it, the entrance panel keypad is set for the access control system reader function. The readers have 3 configurable addresses (ABC), which will be set later on.
- **Address of ACC central (AB)**
Enter the address of the control unit (c0; c1) that will manage the entrance panel keypad as access control system reader.
- **Keypad Address (C)**
Enter the address of the entrance panel keypad set as access control system reader.
- **Local Programming**
by enabling the function, it is possible to change the settings of some address book parameters:
 - Password
 - Language
 - Number of digits of the call code
 - Number of digits of the lock code
 - Riser base address
 Disable the function in case of access control unit management (limited menu management).
Note: in this condition, all changes will be managed by the access control system.

Address book management

Parameters

This screen is used to configure the general parameters of the telephone address book being created or amended.

Parameters	
Building type	Multifamily
Type of code	Apartment address
List of names	Not visible
Direct call to switchboard	No
Calling Code Length	4
Lock Code length	9
Contact's list order	By Surname/Text1 alphabetical order

Parameters
Parameters

- Building type**
 Select if the system is a one-family or a multifamily system
- Type of code**
 The call can be made by entering a code using the keypad. This option can be used to define if the code to enter must correspond to the SCS address of the handset, or to a numerical code assigned by the installer
- List of names**
 It is possible to select if the list of names should be visible to visitors or not. If the latter option is selected, in order to make the call, it will be necessary to know the numerical code of the resident.
- Direct call to switchboard**
 If a switchboard is installed a part of the system, it will be possible to enable a direct call to the switchboard using the key .
- Calling code length**
 The length of the calling code can be set between 1 to 8 digits (this field is only enabled when "Numerical calling code" is selected under "Type of code")
- Lock code length**
 The maximum code length can be set between 4 and 9 digits maximum (default 9).
 Based on the lengths of the codes assigned to residents, shorter, or equal to the maximum set length, the way that codes are entered by residents will change:

For codes shorter than the maximum length set (5 digits with maximum length of 7 digits), enter:


0= 12345 0=

For code the same length as the maximum length set (7 digits), enter:

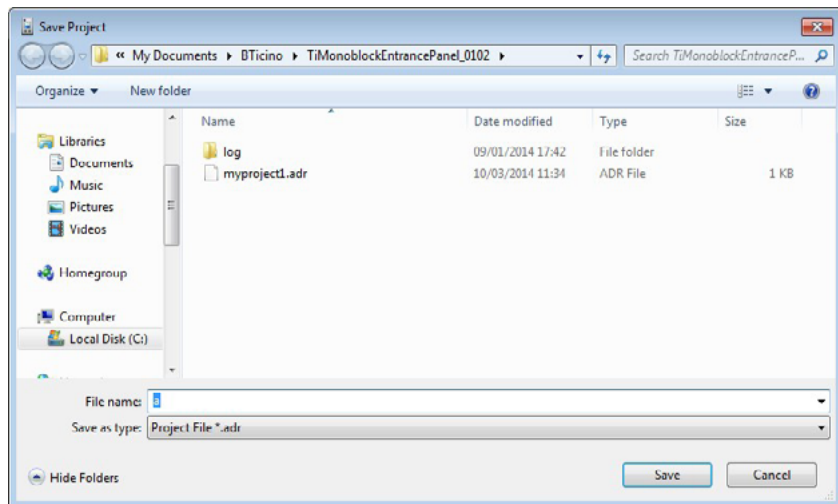
0= 1234567 0=

- Contact list order**
 The contact list can be sorted alphabetically or by numerical code (this field is enabled only if the List of names is set to visible).


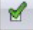
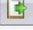




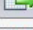
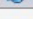


Address book

After setting the general parameters, click  to configure the contact list.

Before accessing the address book, the user is asked to save the project.



Contact management tool

 New contact	Enter a new contact
 Select all	Select all the contacts of the address book
 Copy selected rows	Copy the selected contacts
 Paste	Paste the copied contacts to another address book
 Delete selection	Delete the selected contacts
 Generate template	Generate a MS-Excel template and open the template in Excel, so that the installer can use it to create the address book.
 Import contacts	It can be used to import a contact list from a Microsoft Excel file
 Export contacts	To import a contact list from a Microsoft Excel file
 Reset initial values	Return the contact list to its original state.
Filter by name <input type="text"/>	Address book search filters
Filter by surname <input type="text"/>	
 Filter contacts	
 Reset filters	

Contact ID details

Each contact features the following elements:

Id	Each time a new contact is created, the software assigns an ID code, which can be customised by the installer and used to make the call. (see paragraph 4.1 - Type of code)
Name	Contact name
Surname	Contact surname
Public	If the field is selected, the contact Name and Surname appear on the screen during the selection for making the call (default setting). If the field is not selected, Surname and Name are hidden; the call can be made by entering the numerical code.
Apartment address	SCS address of the handset associated to the contact
Lock Code	For each contact it is possible to assign a custom code for opening the lock associated to the entrance panel.

