



# Vandal-resistant entrance panel

User and installation manual

**bticino**



## Contents

<b>Introduction</b>	<b>5</b>
Warnings and recommendations	5
<b>Description</b>	<b>6</b>
Front view	6
Back view	7
<b>Installation</b>	<b>8</b>
General rules for installation	8
Technical features	8
Dimensional data	9
Flush mounted installation	10
Wall mounted installation	10
Physical configuration	11
Connections	12
Volume adjustment	12
Completing the installation	13
Installing the accessories	14
Camera lens and display glass replacement	15
<b>Configuration using the keypad</b>	<b>16</b>
Access to the configuration menu	16
Language	17
Panel settings	18
Device settings	18
Password setup	18
Home page	19
Acoustic signalling	20
Restore default settings	20
<b>Address book</b>	<b>21</b>
Building type	21
Calling mode - List of names	21
Calling mode - Type of code	22
Calling mode - Function of bell button	22
Calling mode - Recall	22
Sorting of the list	23
Contact setting	23
Modify contact	23
New contact	24
Delete contact	25
Delete address book	25
Phonic module settings	25
ACWeb access control setting	26
Hexact access control setting	26
Without access control	26
FW versions	27
<b>Configuration using the software</b>	<b>28</b>
TiMonoblockEntrancePanel configuration software	28

# Vandal-resistant entrance panel

*User and installation manual*

**bticino**

---

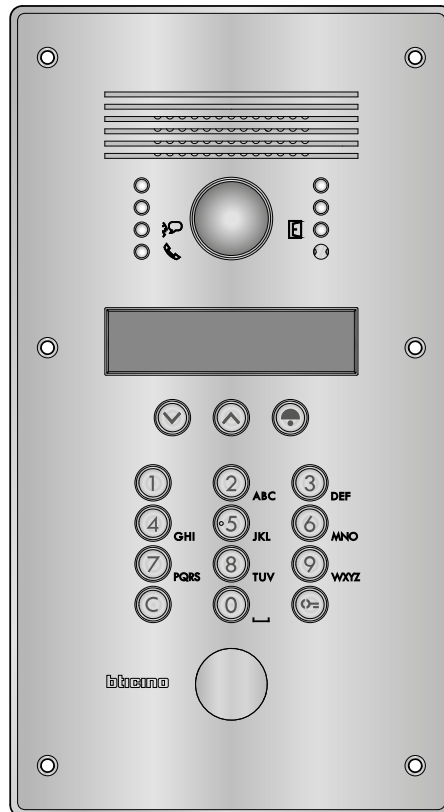
Connection to the PC	28
<b>Using the entrance panel</b>	<b>29</b>
<b>Calling residents</b>	<b>29</b>
Searching using the arrow keys	29
Through surname search	29
Using the numerical code	30
<b>Call to the switchboard (only in multifamily configuration)</b>	<b>30</b>
<b>Call the only resident (Only in single family configuration)</b>	<b>30</b>
<b>Door lock release using a numerical code</b>	<b>31</b>
<b>Changing the lock code</b>	<b>32</b>

## Introduction

### Warnings and recommendations

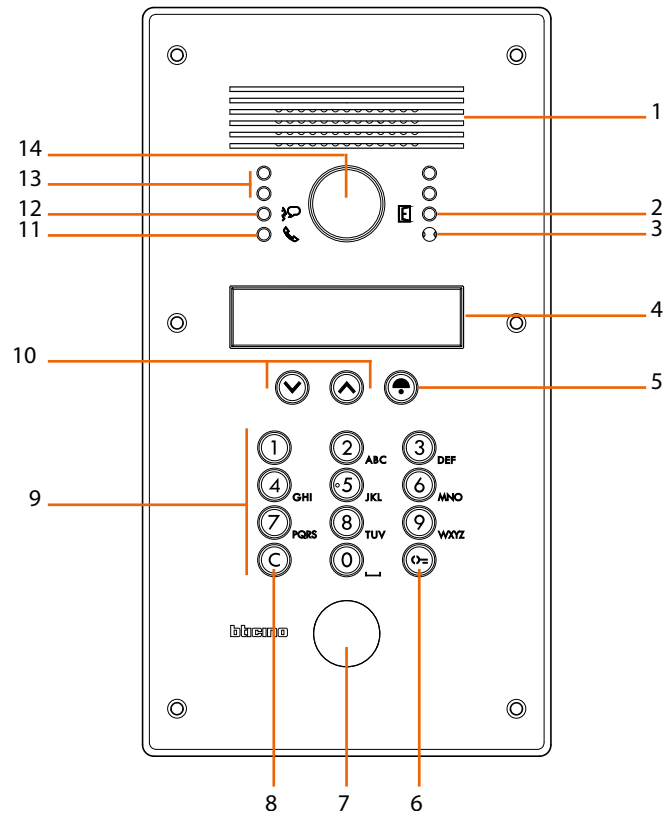
Before proceeding with the installation we recommend that you read the content of this manual very carefully.

The warranty will automatically become void in case of negligence, improper use, or tampering by unauthorised personnel.



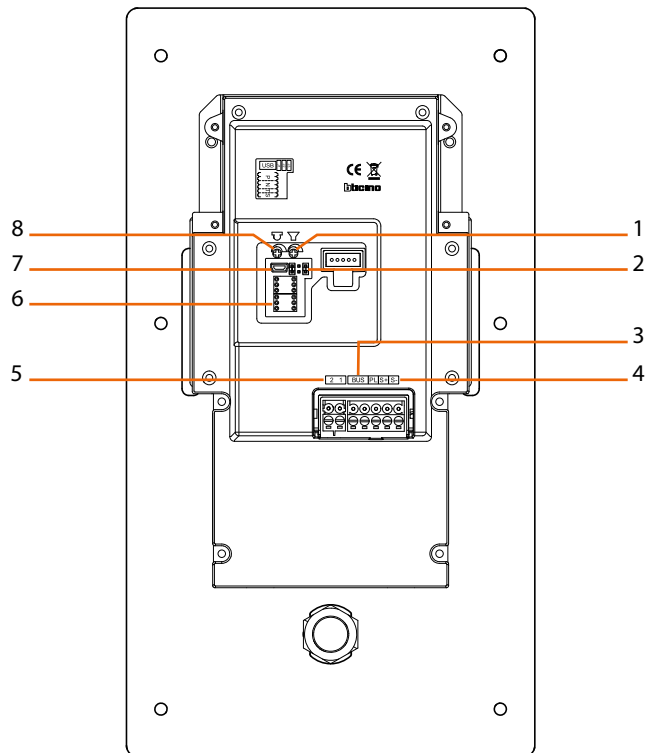
## Description

### Front view



1. Loudspeaker
2. Green LED: door open notification
3. Microphone
4. Display
5. Key used to send the call to the selected resident, or to the switchboard
6. Door lock release key
7. Preset for VIGIK® reader, or key lock release
8. Delete key
9. Alphanumeric keypad
10. Resident search keys
11. Green LED: call forwarded  
Red LED: system busy
12. Green LED: communication active
13. 4 x lighting LED
14. Camera

## Back view



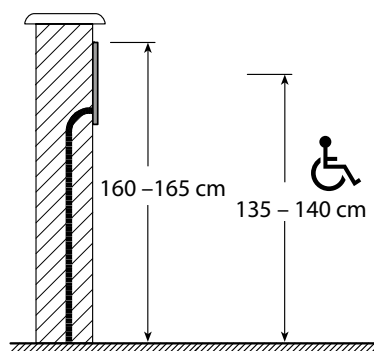
1. Loudspeaker volume adjustment
2. Jumpers (see table in the Programming section).
3. SCS/BUS connection
4. Connection of the door lock and door lock release pushbutton
5. Additional power supply
6. Configurator socket
7. MiniUSB connector for the connection to the PC
8. Microphone volume adjustment

## Installation

### General rules for installation

The camera must not be installed facing strong light sources, or in locations where the area being shot is strongly backlit. In order to resolve these problems, we recommend that the camera is installed at a height of 180 cm, instead of the usual 160 – 165 cm, with the lens pointing down. This will improve image quality.

In low light situations, the colour rendition of the image displayed by the colour camera may decrease. This is to ensure that the person being displayed can be better recognised. To ensure optimum vision in low lit rooms, the installation of an additional light source is recommended.



Typical installation heights

### Technical features

- 1/4" sensor
- lens F: 2,1 mm; f: 1,0 mm
- Power supply 18 – 27 Vdc
- Absorption:  
105 mA (stand-by)  
340 mA (max in operation)
- Interlaced 2:1
- 400 lines resolution(horizontal centered)
- Night lighting by the white LEDs
- Automatic brightness adjustment
- Operating temperature (-25) – (+70) °C
- Angle of vision:  
horizontal 124°  
vertical 100°
- Protection index: IP54
- Protection index against mechanical impact: IK07

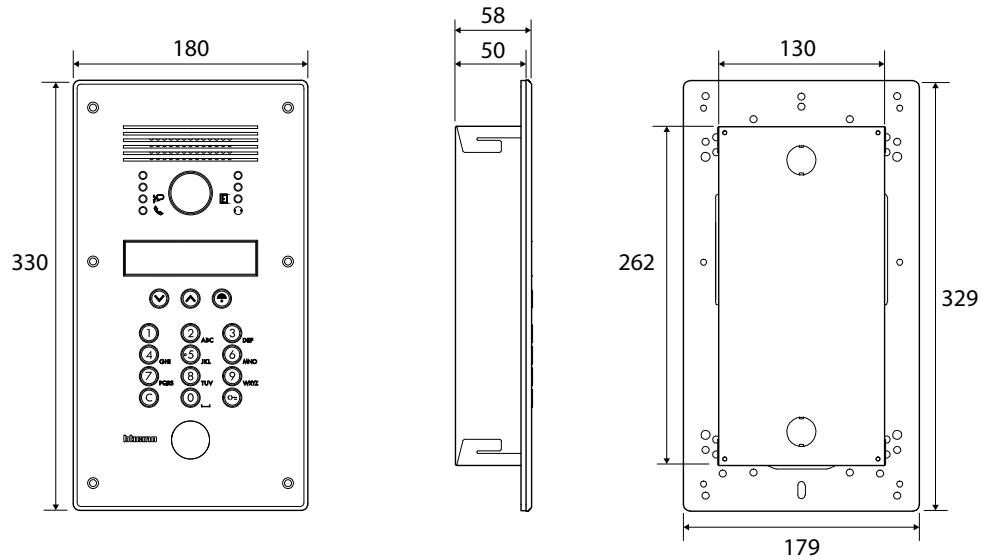


# Vandal-resistant entrance panel

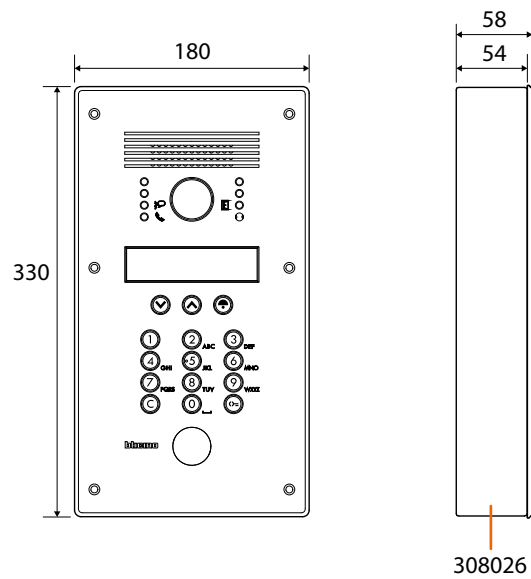
User and installation manual

## Dimensional data

Flush mounted installation



Wall mounted installation

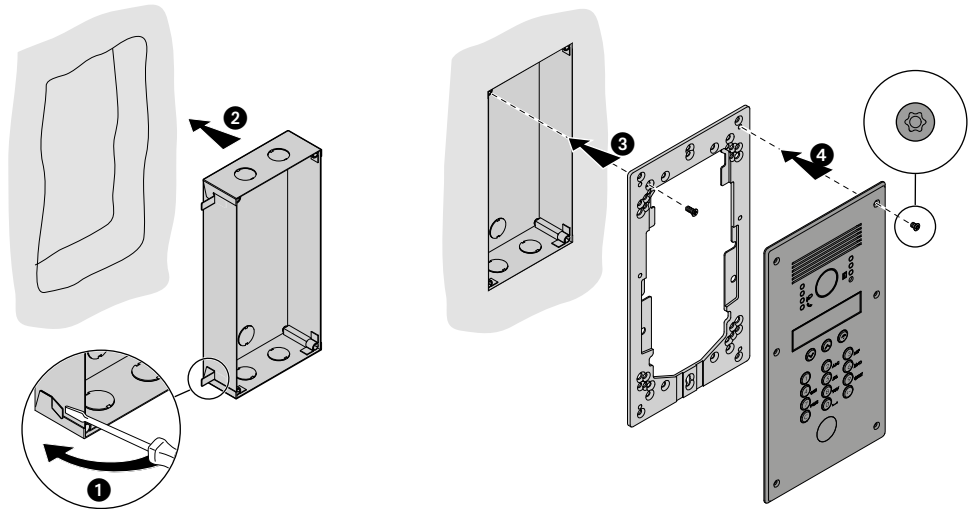


# Vandal-resistant entrance panel

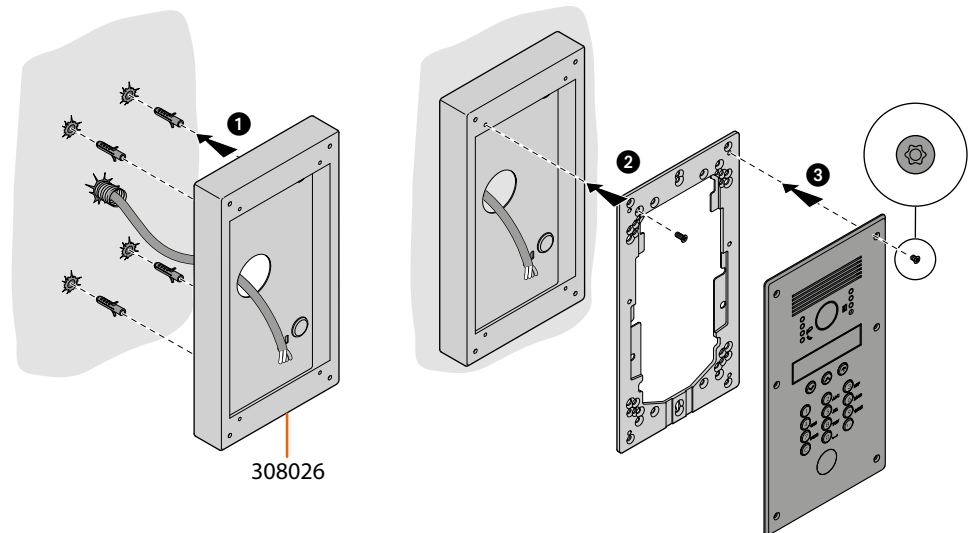
User and installation manual



## Flush mounted installation



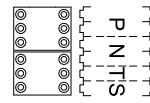
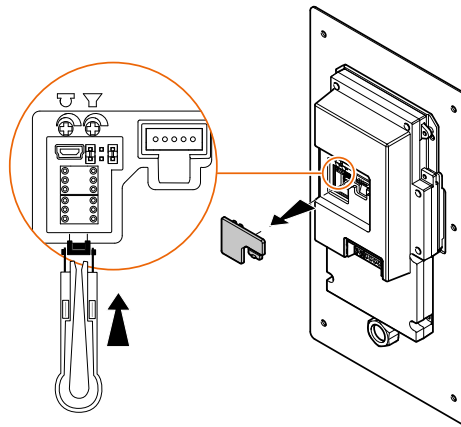
## Wall mounted installation



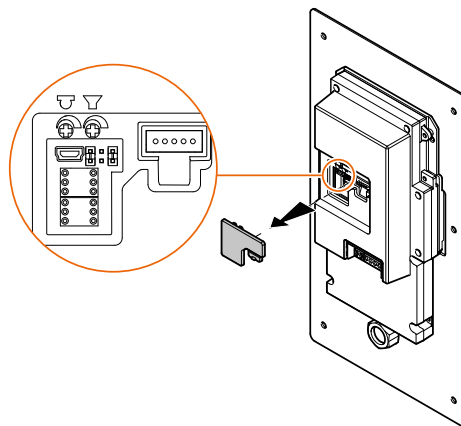
# Vandal-resistant entrance panel

User and installation manual

## Physical configuration

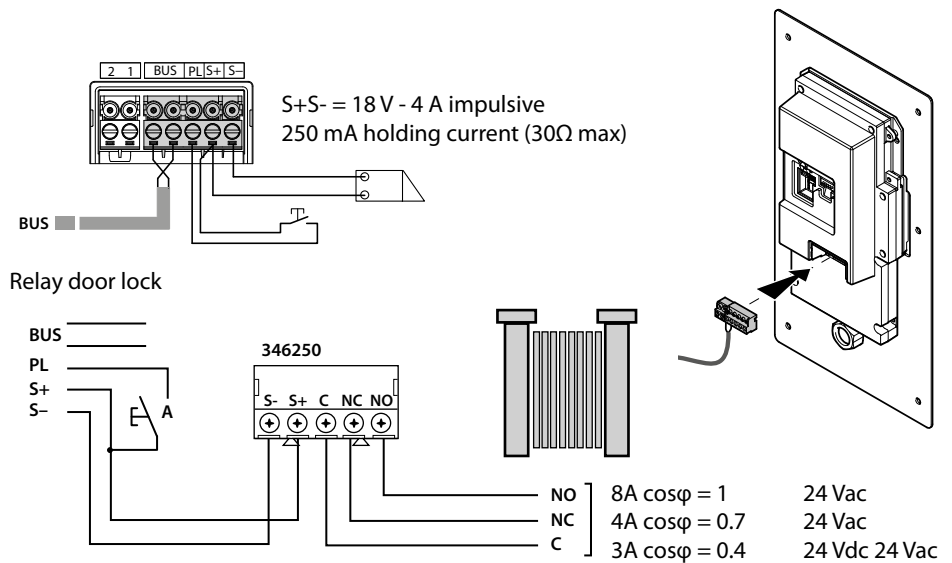


- P = Entrance panel number
- N = Call number (Not used)
- T = Door lock time delay
- S = Type of call signal



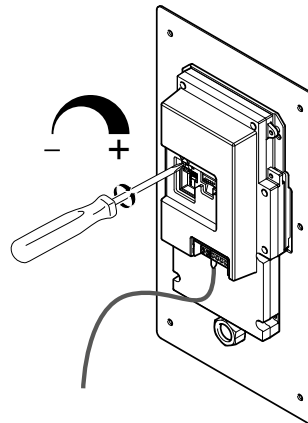
- J1 - Jumper connected to J1 (default) = control speech synthesis enabled; sound notification disabled
- J2 - Jumper connected to J2 = control speech synthesis disabled; sound notification enabled
- J3 - Remove in case of additional power supply

## Connections



## Volume adjustment

In case of high pitch noise (Larsen effect), first try reducing the power of the microphone using a screwdriver on the corresponding potentiometer, until an acceptable level is reached. If the problem continues, adjust the potentiometer of the loudspeaker to eliminate the problem. If the volume is too low, increase first the volume of the loudspeaker and then if necessary also the volume of the microphone, remembering that the best solution is a clear transmission, without disturbance, at the limit just below the occurring of the Larsen effect.

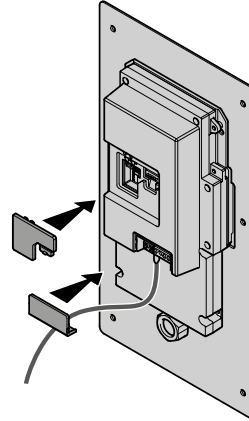


# Vandal-resistant entrance panel

User and installation manual

## Completing the installation

**Warning:** before securing the entrance panel to the wall fit the protection caps in their housings, ensuring that they are positioned correctly

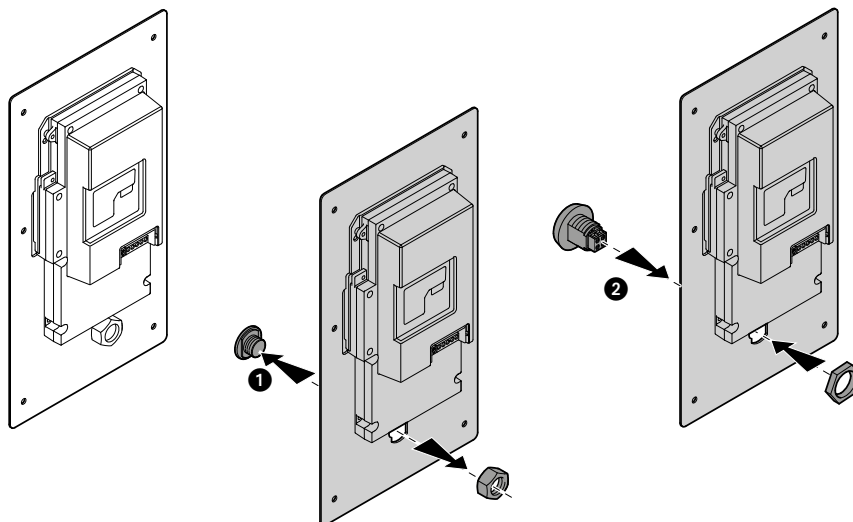


**Warning:** when switched on for the first time, the entrance panel will ask the user to select the language; once this has been done, it will be possible to access the menus

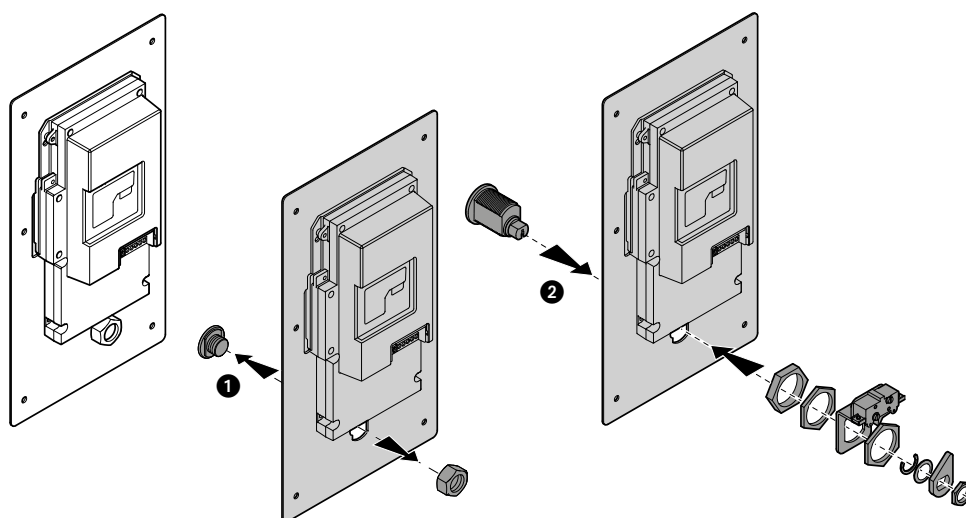


## Installing the accessories

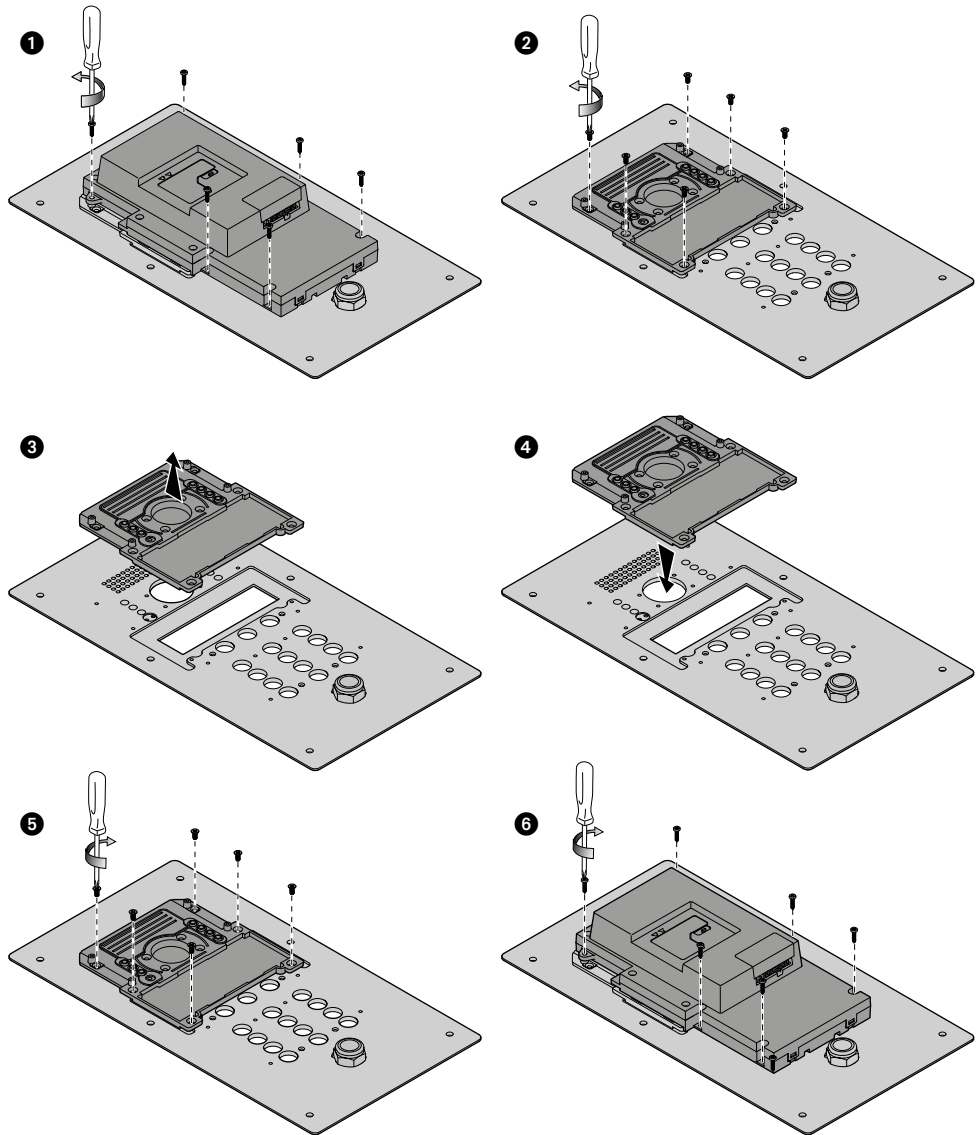
VIGIK® transponder reader



CCT75NM key switch

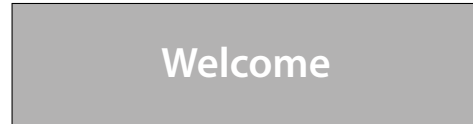


## Camera lens and display glass replacement

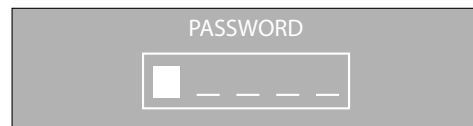


## Configuration using the keypad

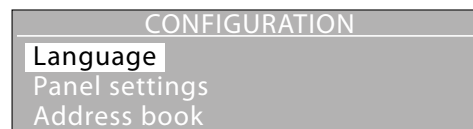
### Access to the configuration menu



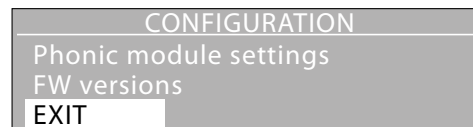
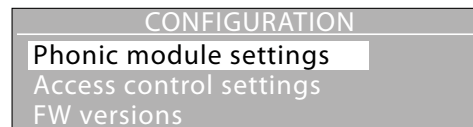
Press and hold down simultaneously keys for more than 10 seconds



Enter the access code (default 12345)



If the correct code has been entered, direct access to the configuration menu will be granted



To exit the configuration menu select EXIT and press

**Warning:** For all the other menus outlined below: to return to the previous menu click EXIT followed by , or simply




## Language



Press 

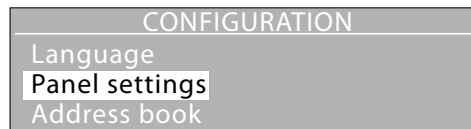
Select the desired language





Confirm 


The set language will be marked by an asterisk

## Panel settings



Select the menu  



Confirm 

## Device settings



The DEVICE SETTINGS submenu can be used to set the following functions:

**Brightness:** display brightness adjustment

**Contrast:** contrast adjustment

**Keyboard light setting:**

- ON = keyboard always on (default setting)
- ECO = the keyboard light comes on when in use
- OFF = the keyboard light is always off

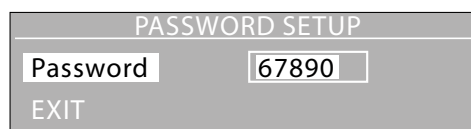
## Password setup




To change the access password:

Press 

Enter the new password



Confirm 

## Home page

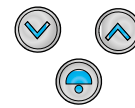
The home page can be used to enter a customised welcome message, or any other message; the message can use a maximum of three rows of text of 15 characters (Template); to switch from upper case to lower case and vice versa use the arrow keys. The length of time the message is displayed on the screen (5, 10, or 15 sec.) (Timeout).

### Entering the text

HOME PAGE	
Template	1 line
Timeout	5 sec
Text	-->


Press 

HOME PAGE TEXT	
Line 1	-->
Line 2	-->
EXIT	




Select the row where to enter the new text, or change the existing text and confirm

HOME PAGE TEXT	
Line 1	Welcome
EXIT	

Press  to select the text field

HOME PAGE TEXT	
Line 1	MY TEXT
EXIT	

Enter the text using the alphanumeric keypad, in the same way as you would write an SMS message on your mobile phone

Confirm 

MY TEXT	
---------	--

The new message will appear continuously on the home page for the period set a Timeout

## Acoustic signalling



The ACOUSTIC SIGNALLING submenu can be used to enable/disable the following functions:

**Key sound** Audible signal emitted when the keys are pressed  
**Lock code change beep** Audible signal emitted when the door lock code is being changed

- ON= short BEEP if the code entered is correct  
 long BEEP if the code is incorrect
- OFF= Audible signal disabled

**Voice msgs: volume** Volume adjustment for voice messages broadcasted by the device

The other menu items represent voice messages relating to events (e.g. "Call in progress", "End of call", etc.).

They may be enabled/disabled individually with the following procedure.



Select an item from the menu

Press



Set as required

Confirm

**Voice messages are only active when jumper J1 is connected (see Physical configuration).**

## Restore default settings

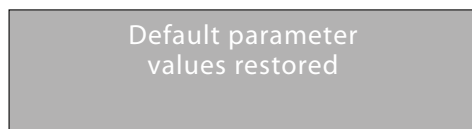


Select the function



The request to confirm the restore appears

Press

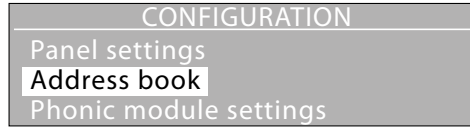


The settings of the entrance panel revert to the factory settings.

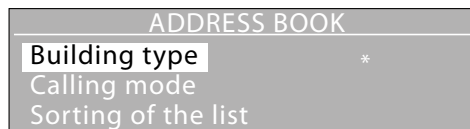
This function does not delete the data contained in the residents address book.

## Address book

This menu can be used to enter residents' data, including call codes and door lock release codes, as well as for performing any other functions described in the following paragraphs.




## Building type



Press 

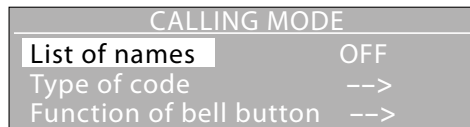


For systems with several apartments use Multifamily mode (default).

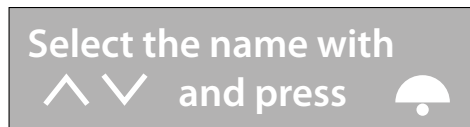
In Single Family mode, the call is activated directly by pressing , without the need for selecting the extension.

Press 

## Calling mode - List of names



This setting determines how the names of the residents are displayed; if enabled, the display will show the following message:



To search the desired name use the indicated key, or enter the surname using the alphanumeric keypad.

## Calling mode - Type of code

CALLING MODE	
List of names	ON
Type of code	-->
Function of bell button	-->

Enter the type of code to use when calling the residents


CODE TYPE	
Apartment address	*
Call code	
EXIT	

### Apartment

**address** SCS address of the handset  
**Call code** Numerical code assigned to the resident

## Calling mode - Function of bell button

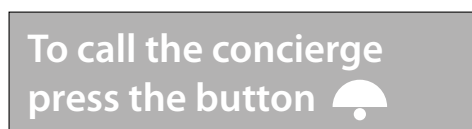
CALLING MODE	
List of names	ON
Type of code	-->
Function of bell button	-->

The key  can be enabled for direct call to the switchboard.

In multifamily: enable/disable the bell button for calling the switchboard.

In single family: set the address which will be called by the bell button (i.e. the address of the internal units, usually set to 0).

Display in "Switchboard" mode



Display in "Single Family" mode

## Calling mode - Recall

CALLING MODE	
Type of code	-->
Function of bell button	-->
Recall	0

When this function is enabled, the entrance panel will automatically repeat.

0= no recal

1= 1 recall after 10 sec

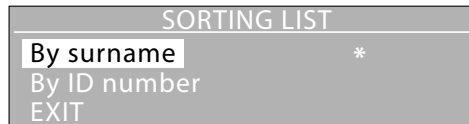
2= 2 recalls every 10 sec

3= 3 recalls every 10 sec

## Sorting of the list

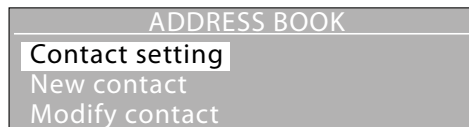


The names can be sorted alphabetically by surname or by identification code number.



The sorting order set is marked by an asterisk.

## Contact setting



The call codes and the door lock release codes can be set with a length of 1 to 8 digits for the Call code and 4 to 9 digits for the Lock code.



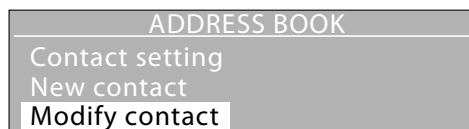
### Call code digits

Length of the codes for calling residents (default 4 digits)

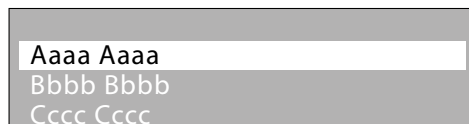
### Lock code digits



Length of the door lock release codes (default 9 digits)


## Modify contact



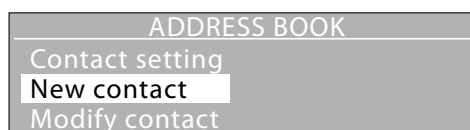
This function gives the possibility of changing the contact selected



Select the contact to change  

Confirm 

## New contact



This function can be used to enter new residents in the address book

For each resident it will be possible to set the following data:

- **ID number** (use if the desired order of the list is different from the alphabetical order)  
Identification number; the entrance panel assigns a progressive number to each resident. This function gives the possibility of changing this ID with a 4 digits number defined by the installer.
- **Surname (Text 1\*)**      Surname of resident  
**Name (Text 2\*)**          Name of the resident
- **Public**  
YES= The name and the surname of the resident appear on the display during the selection for call  
NO= The name and the surname of the resident are hidden, the call is possible by entering the "Call code".
- **Apartment address**      Enter the handset SCS address
- **Call code**                  Numerical call code
- **Lock code**                  Door lock release numerical code

(\*) If "Sorting of the list" is set to "By ID number".

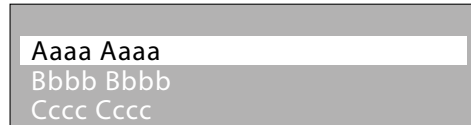
**Warning:** in installations including an access control central unit, when a badge is placed near the central unit the contact "Surname", "Name" and "Apartment address" are automatically added to the address book.





## Delete contact




This function gives the possibility of deleting the contact selected



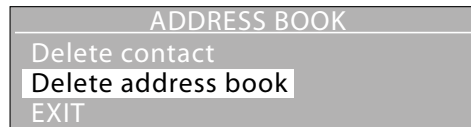
Select the contact to change  

Press 



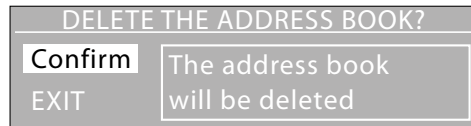
The request to confirm the elimination of the contact appears 

## Delete address book



This function gives the possibility of deleting all the contacts of the entrance panel address book

Press 



The request to confirm the action appears: to permanently delete the address book

Press 

## Phonic module settings

The configurations of this menu are only possible if the phonic (speaker) module is not configured physically



<b>P - Panel number</b>	Entrance panel SCS address (0 – 95)
<b>T - Lock time</b>	Door lock time delay (0– 7)
<b>S - Call tone</b>	Type of call signal (0 – 9)
<b>P - Associated switchboard</b>	The SCS address of the associated riser switchboard (none, 0 to 15)
<b>P - Main switchboard</b>	The SCS address of the main control unit (none, 0 to 15)
<b>Riser (M)</b>	Riser address the EP is part of (M address of interface 346851 of the riser; set to "None" if the EP is installed on the backbone) Note: do not confuse this configurator with the other M referred to the operating mode

## ACWeb access control setting

The configurations of this menu are only possible if the phonic (speaker) module is not configured physically

ACCESS CONTROL SETTINGS	
Central address (A/B)	00
Reader address (C)	1
Operating mode (M)	0

- Central address (A/B)** Address of the access control central unit that manages the reader (keypad built in the entrance panel, (keypad built in the entrance panel; the A/B address corresponds to the address of the C0/C1 control unit)
- Reader address (C)** Reader address (keypad built in the entrance panel) in the ACC system.
- Operating mode (M)** M=0 - The address book, the calling code and the door lock codes are managed by the entrance panel and can be modified locally from the menu or from the configuration software.  
M=2 - The address book, the calling code and the door lock codes are managed by the access control system and must not be modified locally.  
**Note:** do not confuse this configurator with the other M referred to the address of the riser column.

## Hexact access control setting

The configurations of this menu are only possible if the phonic (speaker) module is not configured physically

ACCESS CONTROL SETTINGS	
Central address (A/B)	00
Reader address (C)	1
Operating mode (M)	0

- Central address (A/B)** Address of the 348500 interface associated to the entrance panel
- Reader address (C)** Always select 1 by default
- Operating mode (M)** M=2 - The address book, the calling code and the door lock codes are managed by the access control system and must not be modified locally.  
**Note:** do not confuse this configurator with the other M referred to the address of the riser column.

## Without access control

The configurations of this menu are only possible if the phonic (speaker) module is not configured physically

ACCESS CONTROL SETTINGS	
Central address (A/B)	00
Reader address (C)	1
Operating mode (M)	0

- Central address (A/B)** Not used
- Reader address (C)** Not used
- Operating mode (M)** M=0 - The address book, the calling code and the door lock codes are managed by the entrance panel and can be modified locally from the menu or from the configuration software.

## Menu management **Full**

The settings and the address book can be almost fully modified, with the following exceptions:

- If the address book is not empty, the call code digits and the lock code digits cannot be changed.
- If M = 2, lock codes cannot be changed

### **Limited (can be set only with TiMonoblockEntrancePanel):**

a) The following options can be only remotely changed by the access control central:

- Password
- Language
- Number of call code digits
- Number of lock code digits
- Riser base address

b) The following menu options are not allowed in the installer menu because the access control central takes care of the address book:

- New contact
- Modify contact
- Delete contact
- Delete address book

## **FW versions**

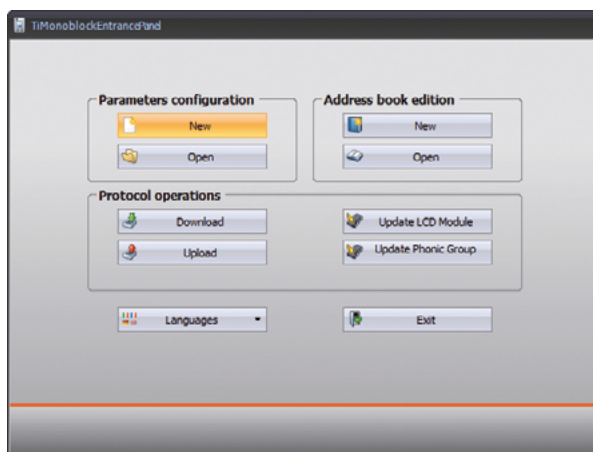
This menu shows the versions of the firmware installed on the device.

```
FW VERSIONS
LCD Module : 0X.0X.XX
Phonic Module : 0X.0X.XX
EXIT
```

## Configuration using the software

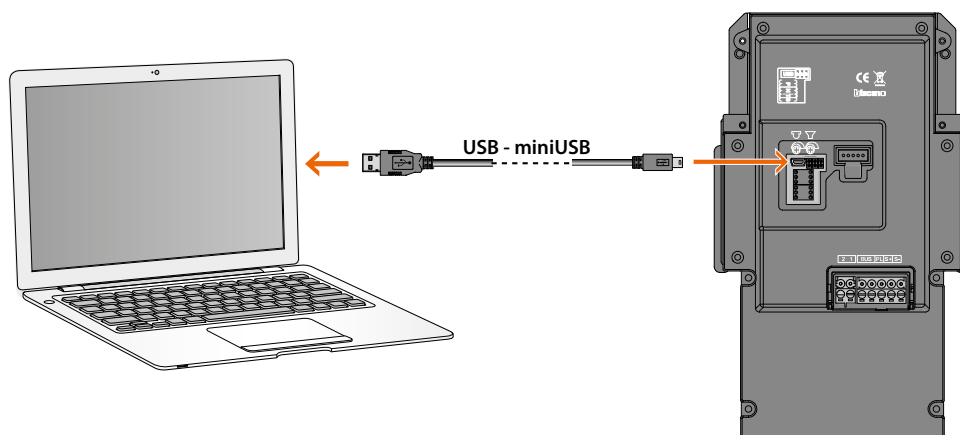
### TiMonoblockEntrancePanel configuration software

The TiMonoblockEntrancePanel software supplied with the device gives the possibility of configuring the entrance panel for use with video door entry systems only; In this case it will be possible to manage also the residents address book using the software. In order to use the entrance panel in systems with access control, the configuration must be completed using the device menu, while the residents address book will be managed by access control.



### Connection to the PC

To connect the entrance panel to the PC use an USB-mini USB cable

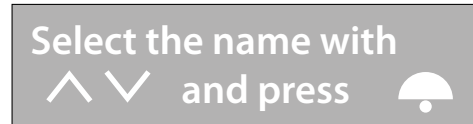


## Using the entrance panel



### Calling residents


Residents may be called in three different ways:

#### Searching using the arrow keys

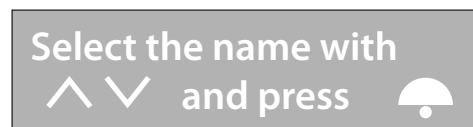


Press one of the arrow keys to access the address book  

Use the arrow keys to scroll through the names until the name of the desired resident appears; for fast scrolling press and hold the key  

Press to send the call 


#### Through surname search



Press one of the arrow keys to access the address book  



Use the keypad in the same way as a mobile phone keypad to enter the surname, or even just the initial, of the contact to call

Press to send the call 

## Using the numerical code

Select the name with  
^ v and press

1 2 \_ \_  
Insert the code

1 2 3 4  
and press

If the resident's call code is known, simply enter it on the keypad



Enter the resident's code

Press to send the call

## Call to the switchboard (only in multifamily configuration)

To call the switchboard  
press the button

To call the switchboard directly  
press this key

Switchboard

The switchboard called is the one configured in "Phonic module settings –Switchboard"

## Call the only resident (Only in single family configuration)

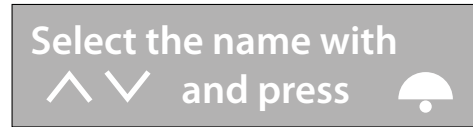
To call press  
the button

To call the only resident press this key

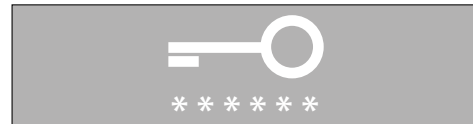
Calling

## Door lock release using a numerical code

The procedure to follow for releasing the door lock associated to the entrance panel using the lock code changes depending on the length of the codes assigned to the residents, which can be up to the maximum length set.



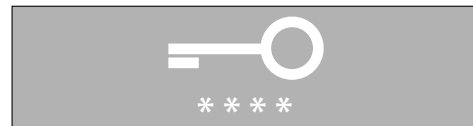
Press the key



Enter your own Lock code



If the length of the code is the same as the maximum length set the door lock is released



If the code is shorter than the maximum length set

Press the key



To recover the installer code. Use a PC with Timonoblock software (and a USB / Mini USB cable) and contact the Pro Relations Department on 0810 48 48 48. Our teams will explain how to recover the installer code. It is necessary to open the plate, prepare the special tool.

## Changing the lock code

Each resident can change their lock code at any time using the following procedure.

**This procedure is not valid if the entrance panel is part of an access control system, and the operating mode is M= 2**

**Select the name with ^ v and press**

**LOCK CODE CHANGE**  
Enter present code

Press this key for at least three seconds

**LOCK CODE CHANGE**  
Enter new code

**LOCK CODE CHANGE**  
Enter new code   
Repeat new code

**LOCK CODE CHANGE**

Enter the current lock code

Enter the new lock code

Re-enter the new lock code

Press the key

Press the key

Press the key

Press the key

Press the key

### Note:

- if **M = 0**: every resident has a unique lock code
- if **M = 2**: the lock codes are managed by the access control central, and several residents can share the lock code

*If the new code already exists, an error message will be displayed.*



# Vandal-resistant entrance panel

*User and installation manual*

---

BTicino SpA  
Viale Borri, 231  
21100 Varese  
[www.bticino.com](http://www.bticino.com)

---