

Contents

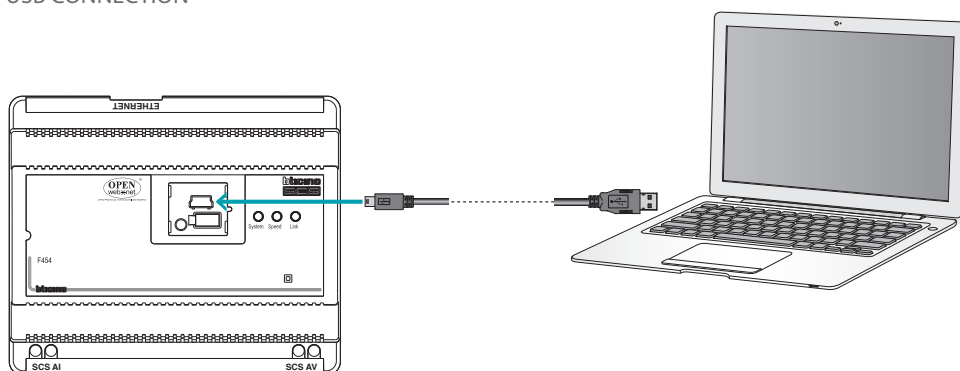
Start	4
Interaction with the device	4
Device configuration	5
Home page	7
Common configurations	8
Project configuration	9
Network connections	9
General parameters	10
Security	12
Services	18
Web pages	18
Scenarios	19
Lights	20
Automation	21
Load control (system with F421 control unit)	21
Temperature control	22
Energy Management	33
Burglar-alarm	37
Cameras	39
Answering machine - Settings	40
Email notification	42
MyHOME portal	43
Economic evaluation setup	45

Start

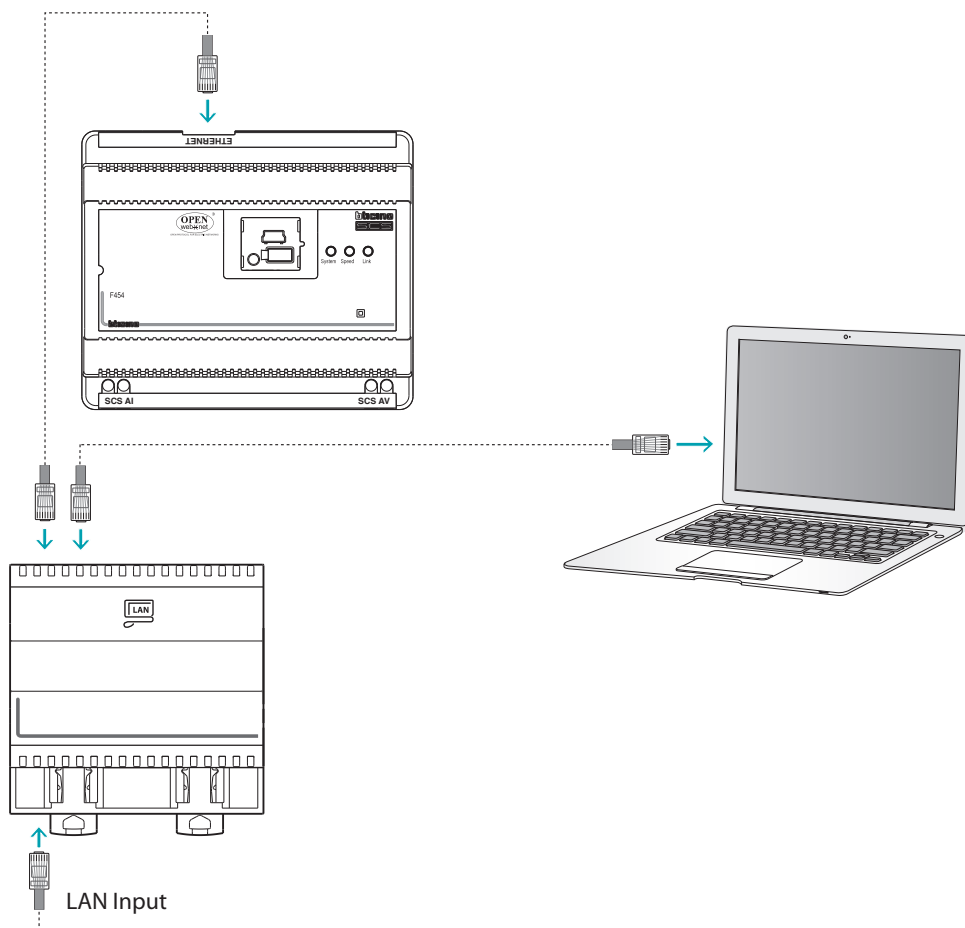
Interaction with the device

To [Send](#) or [Receive the Configuration](#), [Update the Firmware](#) and [Request Device Info](#), it is first of all necessary to connect the device to a PC, and make sure that the right port has been selected. Connect the Web Server to the PC using a USB-miniUSB cable, or an Ethernet cable. For communication to take place, the device must be connected to the BUS.

USB CONNECTION



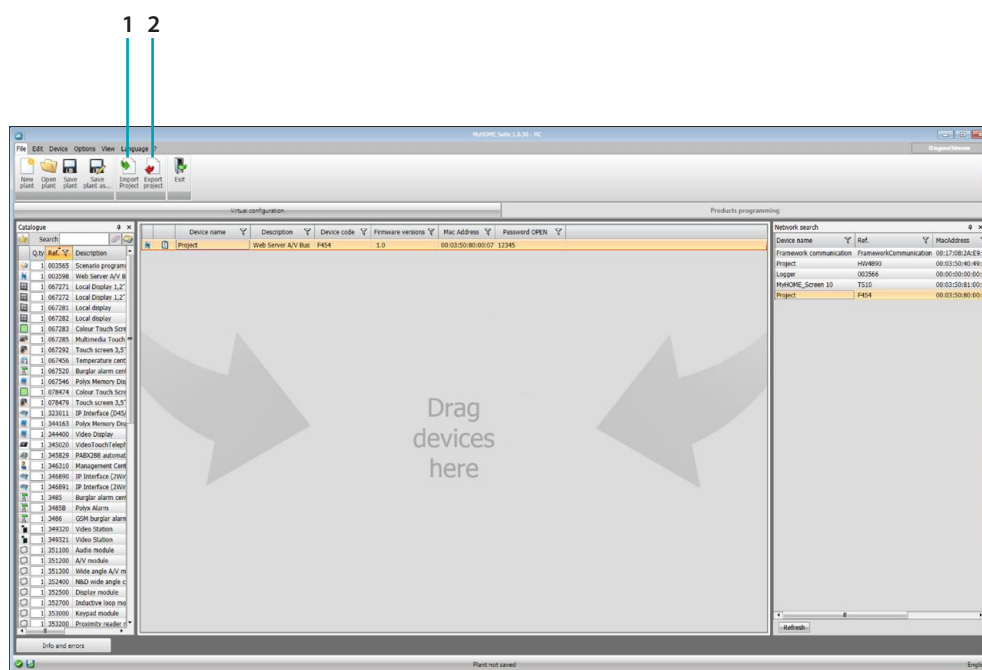
ETHERNET CONNECTION



Device configuration

The device can be configured by creating a new project, or by opening and existing one, which can then be changed and resent to the device. These operation can be performed inside the global area of the software, using some dedicated device management pushbuttons:

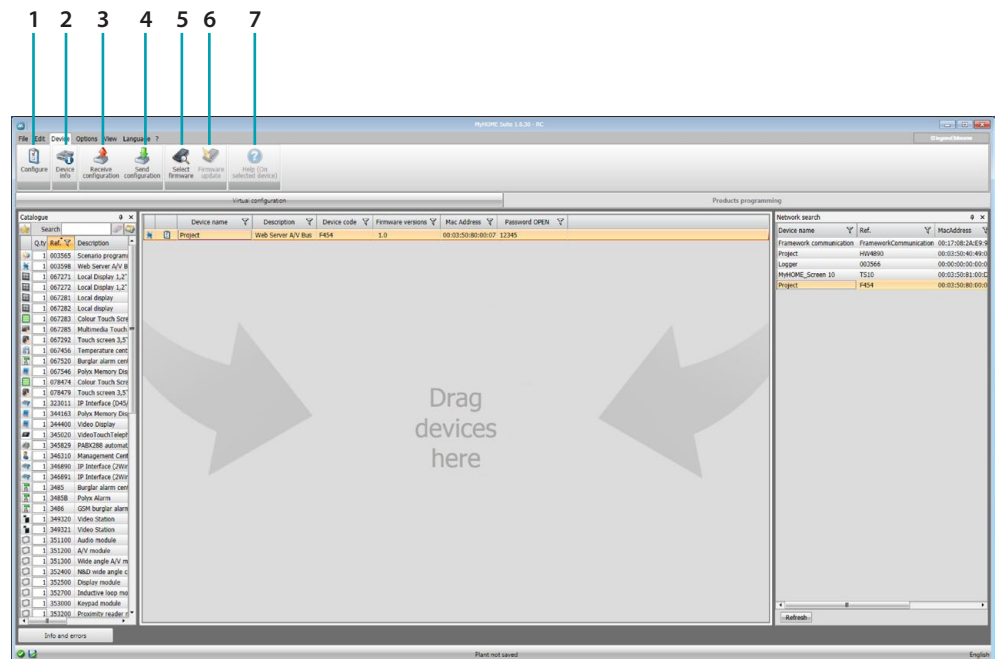
File Menu



1. Import project
2. Export project

To import or export the configuration project created in the specific area, select the device, and click the corresponding key. dispositivo e clicca il tasto relativo.

Device Menu

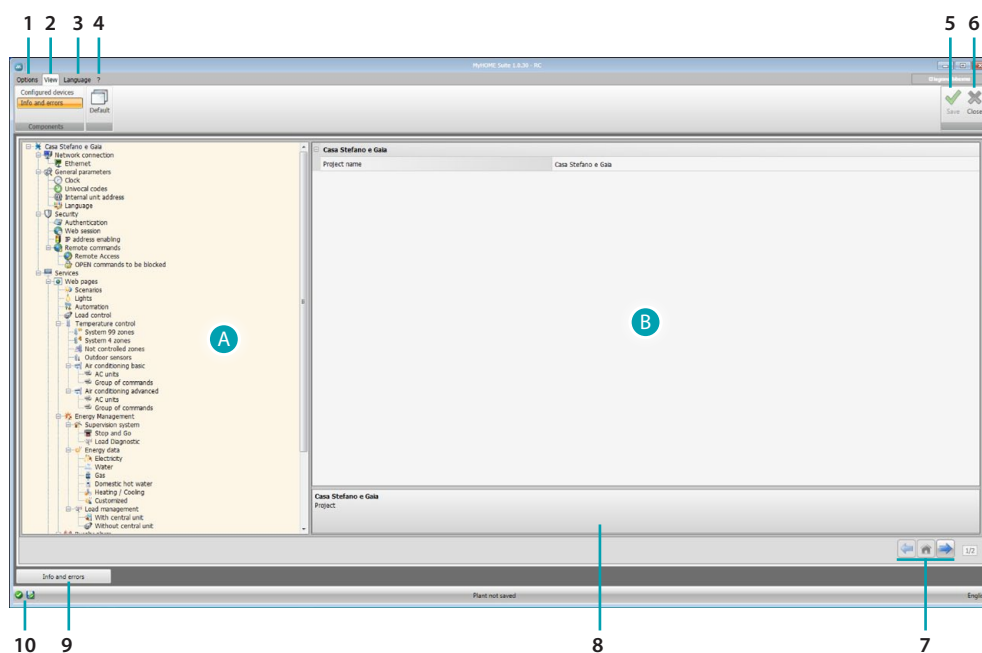


1. Open the specific device configuration area
2. Request Device Info
3. Receive the configuration from the connected device
4. Send the configuration to the connected device
5. Select a firmware for the device
6. Update the device firmware
7. Open the Help file for the device selected

To interact with the device, first select it, and then click the desired function keys.

Home page

The user accessing the program is taken to the start page, which shows all the configuration parameters. The screen essentially consists of 2 sections: on the left side (A) are the parameters and the functions to configure, organised in a tree structure. Based on the selection made, the section on the right (B) shows the fields to select or insert.



1. Options.



Disable automatic save

2. View.

Info and errors

Show/hide the info and error area



Reset the default settings

3. Language.

Select the software interface language

4. Display the device Help icons and some software information .

5. Save the project.

6. Return to the global area.

7. Pushbutton used to navigate through the pages.



Navigate through the configuration pages



Go to the start page

8. Function description.

9. Open the section showing any information, or error messages.





10. File save display.

Common configurations




This section explains the configurations found in all the configuration screens of the Web pages.

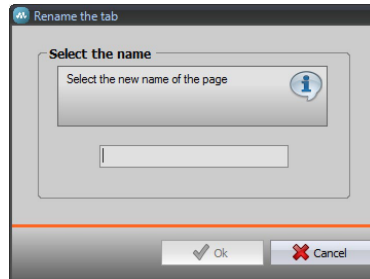
Adding objects/pages

Object management

	Add an object
	Delete an object
	Delete all objects
	Move the object up
	Move the object down

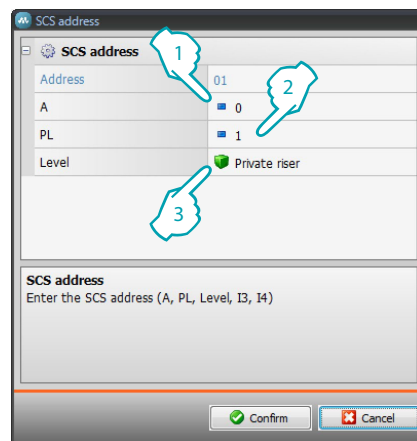
Page management

	Add a page
	Delete a page
	Rename a page Click this key to assign a description to the web page (15 characters max.).



Before adding an object, a page must be added.
After adding an object, a window appears where the user can enter the specific data.

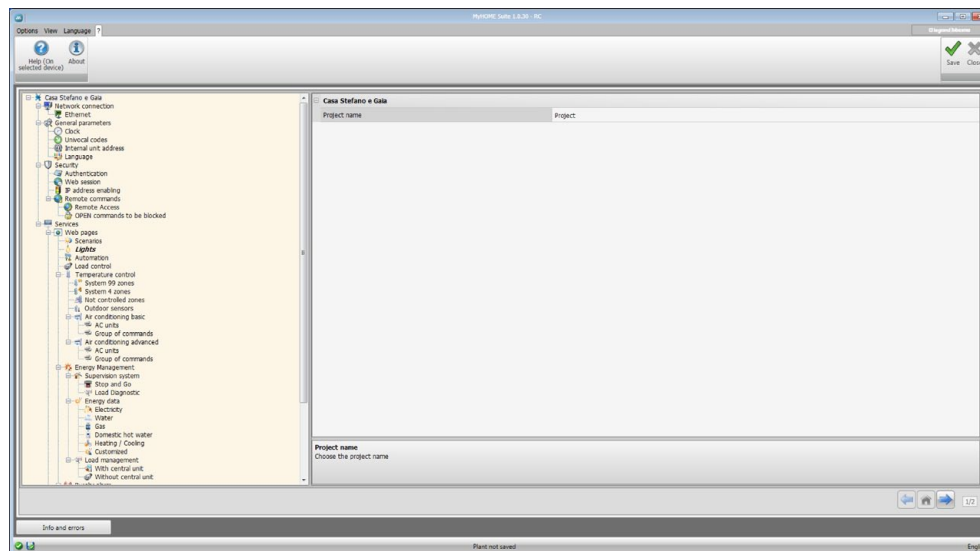
Entering the SCS address



1. Enter the value of room configurator A (0 - 10; GEN, ROOM, GR).
2. Enter the value of the configurator of the PL light point (the number depends on the function).
3. Select if the level is a private Riser or a local bus. In the second case also enter the values I3 and I4.

Project configuration

This section can be used to configure a new project, or to change an existing one.



Enter the configuration data in the various zones.

Network connections

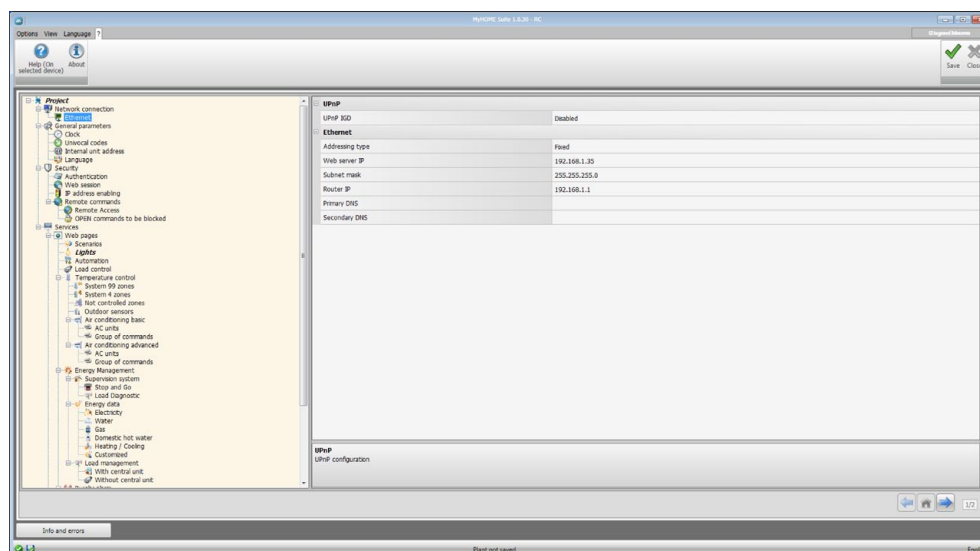
The technical parameters for the network connections are configured in this section.

Ethernet

This screen can be used to enter the parameters for connection to the Ethernet network.



Before editing the default values, contact the network administrator, as well as making the service inactive, incorrect values could cause malfunctions in the communication of other network equipment.



Configuration :

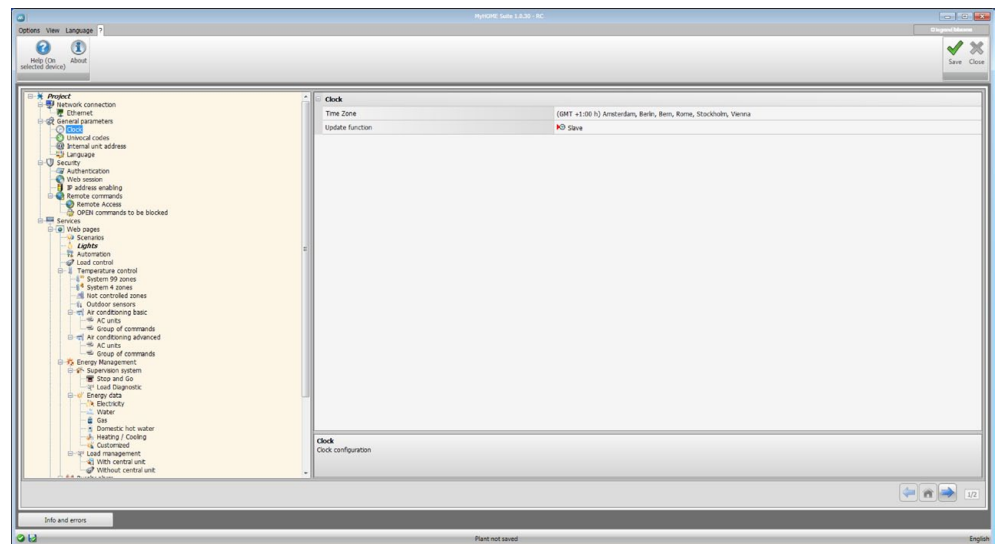
- **UPnP IGD:** Enable the function for direct connection of the device without any need for configuring your own router (check that the router supports this functionality).
- **Addressing type:** Select if the address is a fixed (in which case the parameters below must be entered), or a dynamic DHCP type address.
- **Web server IP and Subnet mask:** Enter the typical parameters of TCP/IP protocol networks required for identifying the device within the local network. Remember that the device needs a “static” (fixed and unique) IP address to be able to work correctly.
- **Router IP:** Enter the IP address of the router, if any. If there is a router the field must be filled in, to ensure the outgoing Services, such as sending e-mails.
- **Primary DNS and Secondary DNS:** Enter primary and secondary IP address of the Internet Service Provider (ISP) supplied at the time of subscription.

General parameters

This section is used for the configuration of the General device parameters.

Clock

This screen is used to enter the parameters for managing the time the device and the system will refer to (Master function active).

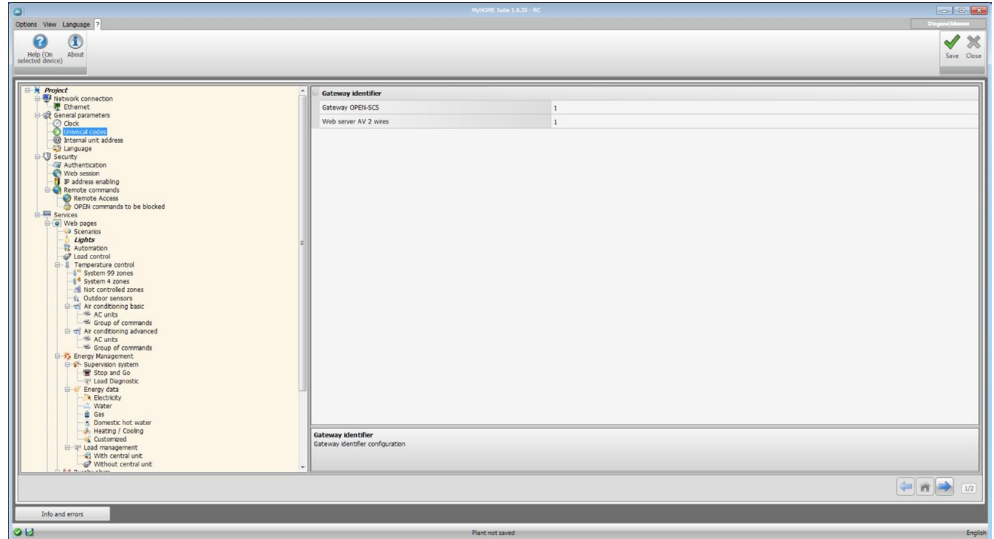


Configuration:

- **Time zone:** Enter the local time zone.
- **Update function:** Define if the device is a system time synchronisation “Master”, in which case the internal clock of the device will be used as time reference by other devices of the MyHOME system.

Univocal codes

This screen is used to configure the gateway ID.

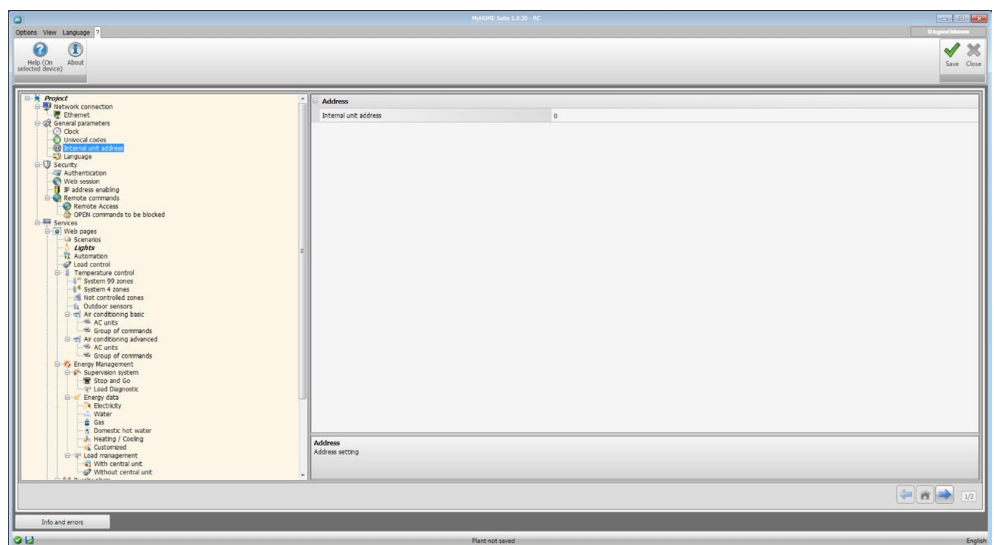


Configuration:

- **Gateway OPEN-SCS:** Enter a unique ID number for the OPEN-SCS gateway function.
- **Web server AV 2 wires:** Enter a unique ID number for the Web Server function.

Internal unit address

This screen can be used to enter the address of the Handset to associate to the Web Server.

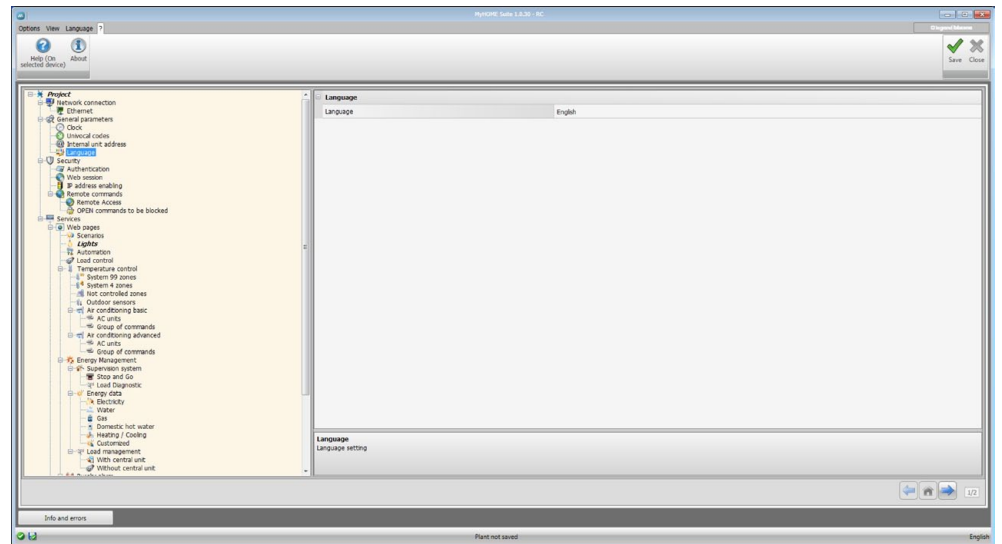


Configuration:

- **Internal unit address:** Enter the handset address. The field can accept values between 0 and 99.

Language

This window can be used to select the language for the control web pages and remote system management.



Configuration:

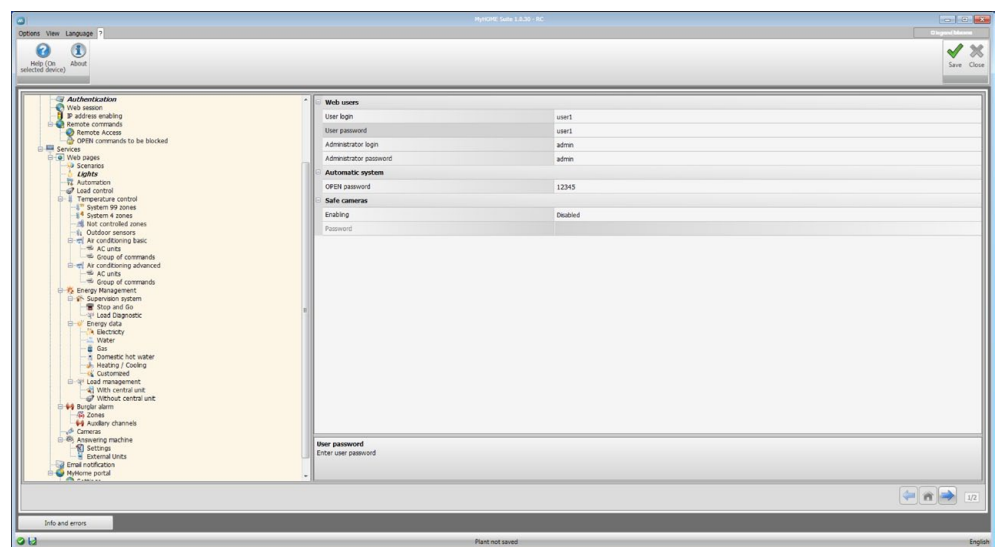
- **Language:** Select the language that will be used to display the Web pages.

Security

This section is used to set the safety parameters.

Authentication

This window can be used to set the Login and the Password for access to the Web pages and to other Services.



Configuration:

Web users

- **User Login and User password:** Enter the Login and the Password for access to the Web pages in user mode (default: user.user).
- **Administrator login and Administrator password:** Enter the Login and the Password for access to the Web pages in administrator mode (default: admin.admin), this mode is used to enable the configuration pages.

Automatic system

- **OPEN Password:** Enter the OPEN password for the device.



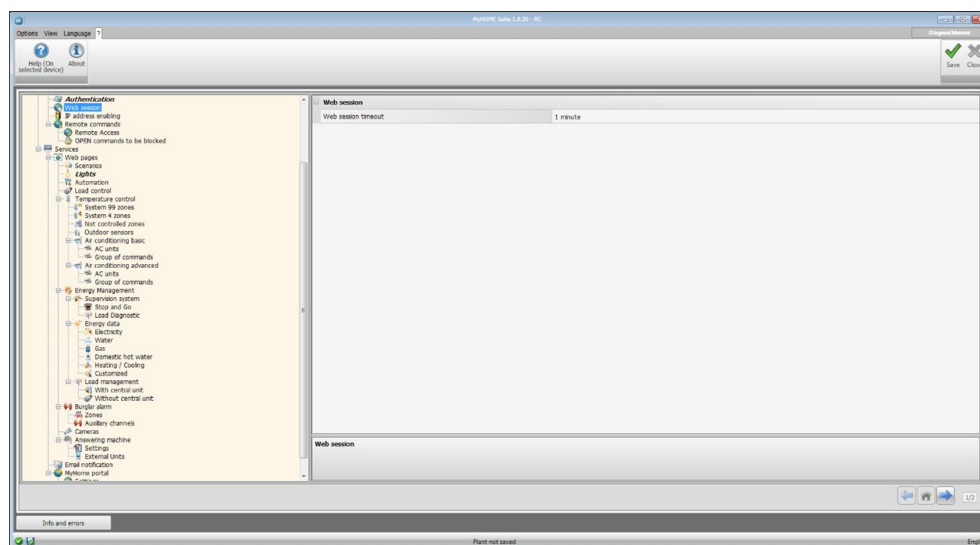
Attention: The default OPEN password in the devices is 12345.

Safe cameras

- **Enabling:** Enable and enter a password to display the images sent by the cameras in safe mode.

Web session

This window can be use to set the length of time the web page will remain inactive before the device returns the user to the identification page.

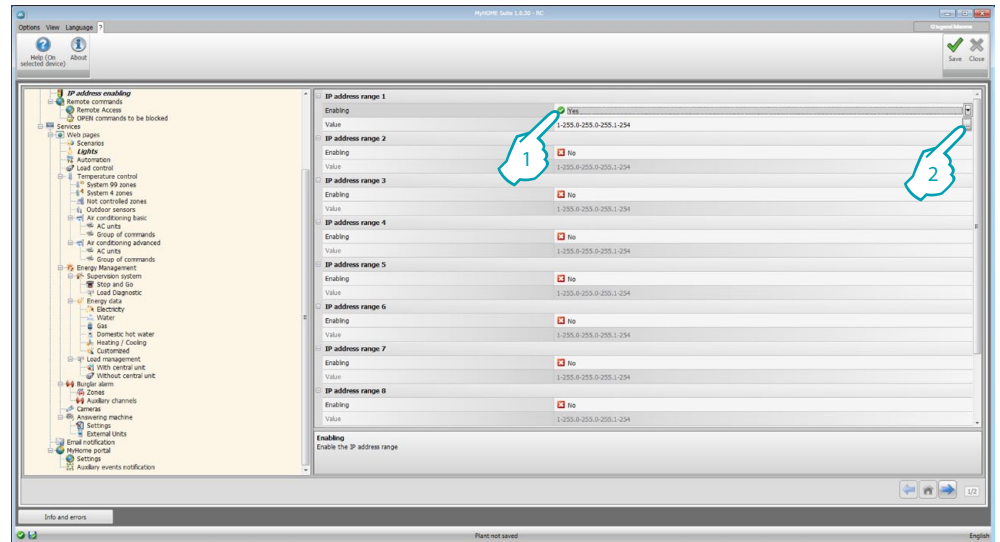


Configuration:


- **Web session timeout:** Select the duration of the session, either 1, 2, 5, or 15 minutes.

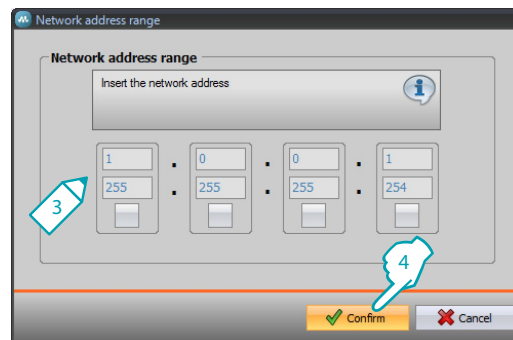
IP address enabling

This window can be used to enter up to 10 IP address ranges with connection to the device enabled, without the need for entering the OPEN password.



Procedure:

1. Enable the interval of IP addresses.
2. Click the  pushbutton.



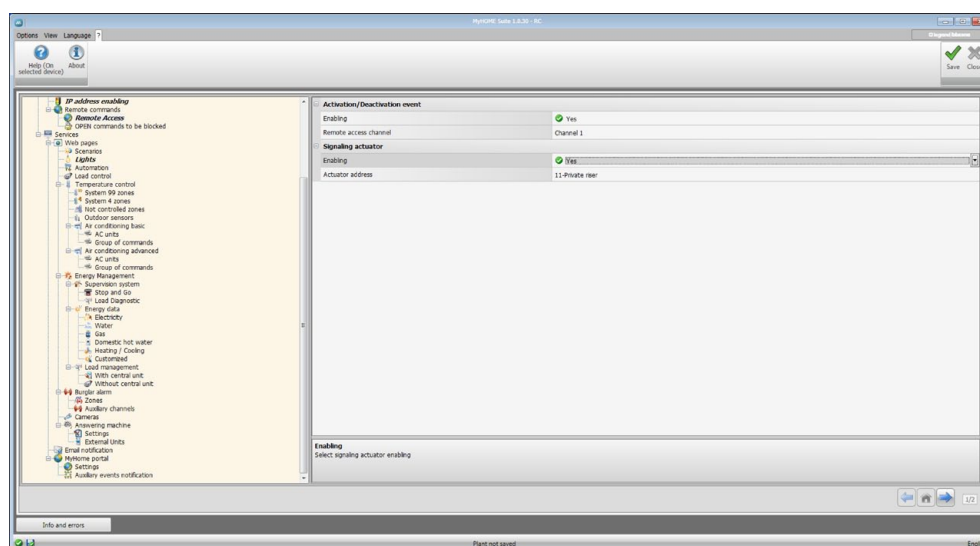
3. Enter the range of network addresses.
4. Confirm.

Remote commands

This window can be used to set the parameters for adjusting the remote access.

Remote access

This window can be used, if required, to disable remote connection to the device. This is done by setting the auxiliary channel from which the command is received.



Configuration:

Activation/Deactivation event

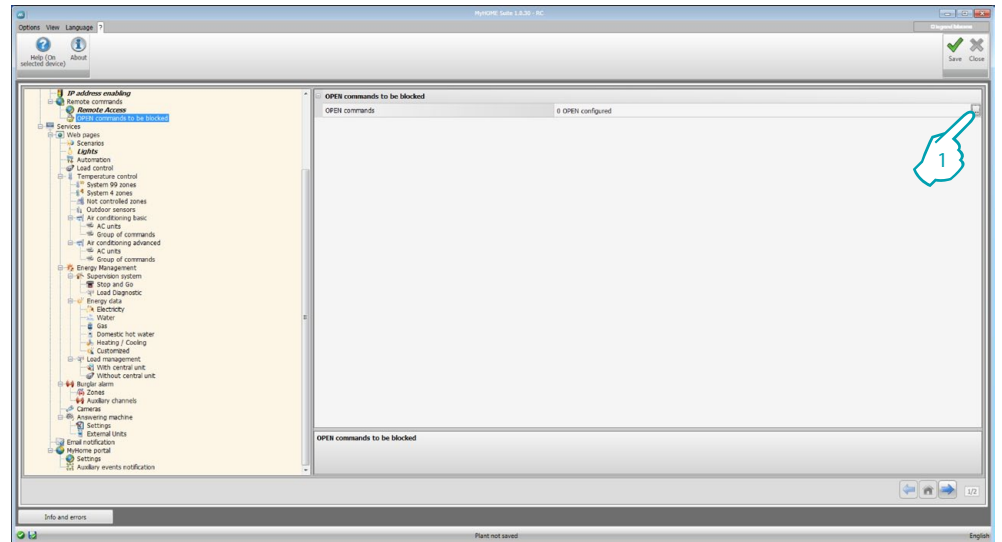
- **Enabling:** Enable the possibility of activating/deactivating remote access to the Web Server using an auxiliary channel.
- **Remote access channel:** Enter the activation/deactivation auxiliary channel.

Signalling actuator


- **Enabling:** Enable a light point to use as signalling actuator for the activation/deactivation of the remote access.
The activation status may be indicated by a notification light coming on, controlled by an actuator of the Automation system.
- **Actuator address:** [Enter the SCS address](#) of the notification actuator.

OPEN commands to be blocked

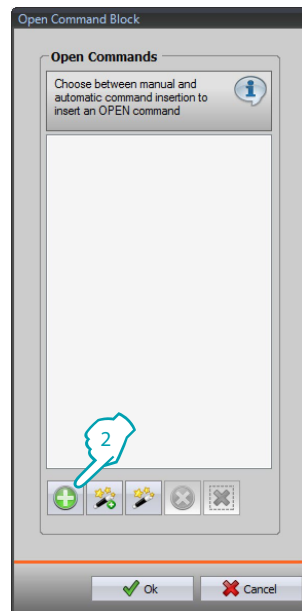
This window can be used to block the forwarding of certain commands received by the device. The definition of the forbidden commands (max. 20) is performed by entering them in the appropriate area, following the "Open Web Net" protocol.



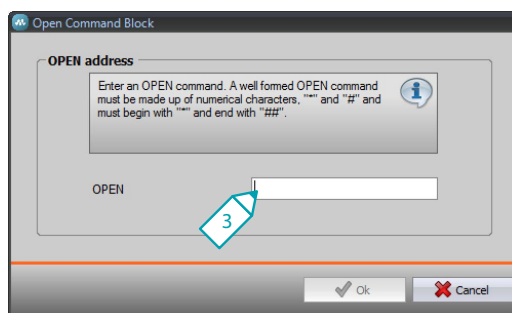
Procedure:

1. Click the  pushbutton to insert the command. it is possible to choose one of the following two modes:

Manual

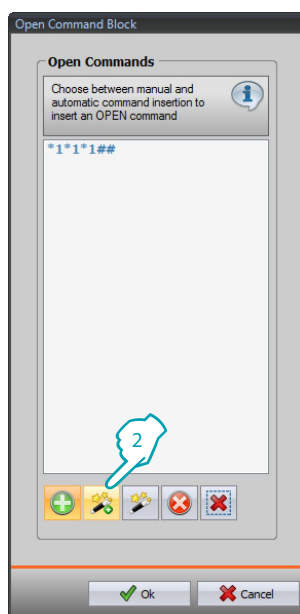


2. Click for manual insertion.

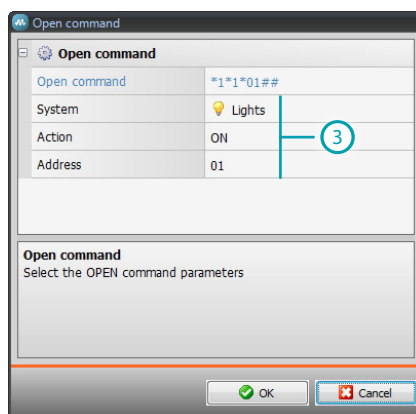


3. Insert the OPEN command to block directly.

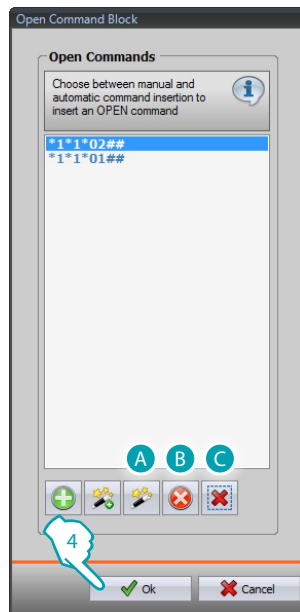
Using the wizard



2. Click for the insertion wizard.



3. Automatically define the command to block by selecting in the appropriate screen: the system (Scenarios, Lights or Automation), the action (which changes depending on the system) and [the SCS address](#).



4. Click OK.

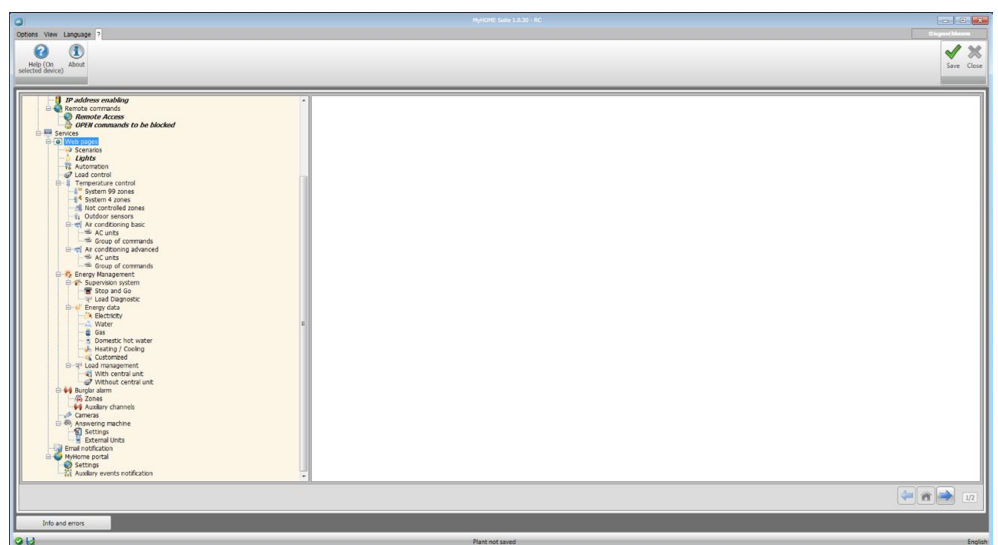
It is also possible to modify the command (A), remove it (B) or remove all commands (C).

Services

The web pages of the MyHOME applications are configured in this section.

Web pages

This window can be used to create and modify the Web pages for the definition of the objects for the activation of the functions corresponding to the MyHOME applications within the system.

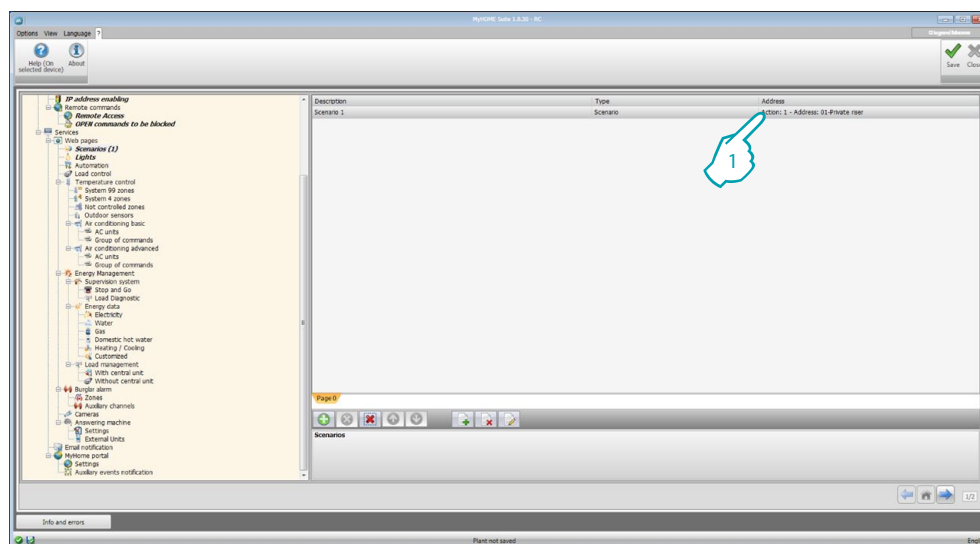


Scenarios

This window can be used to define the objects found in the “Scenarios” web page, where it is possible to activate the scenarios managed by the control unit, or by the scenario module installed in the system.

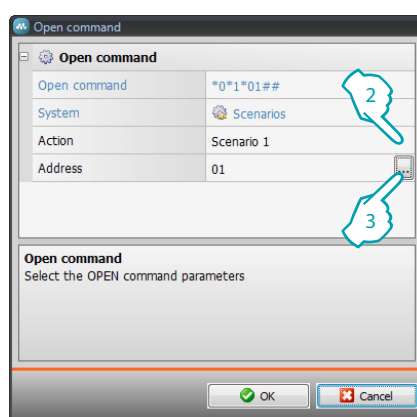
It is possible to configure up to 9 Web pages with 10 objects each, one of which at least correctly configured.

[Add the pages/objects.](#)



Configuration:

- **Description:** Enter the description of the object (15 characters max.).
- **Type:** Select if the scenario is a Normal or a Plus scenario.
- **Address:**
 1. Click to select the address of the scenario to perform, saved in a scenario module.



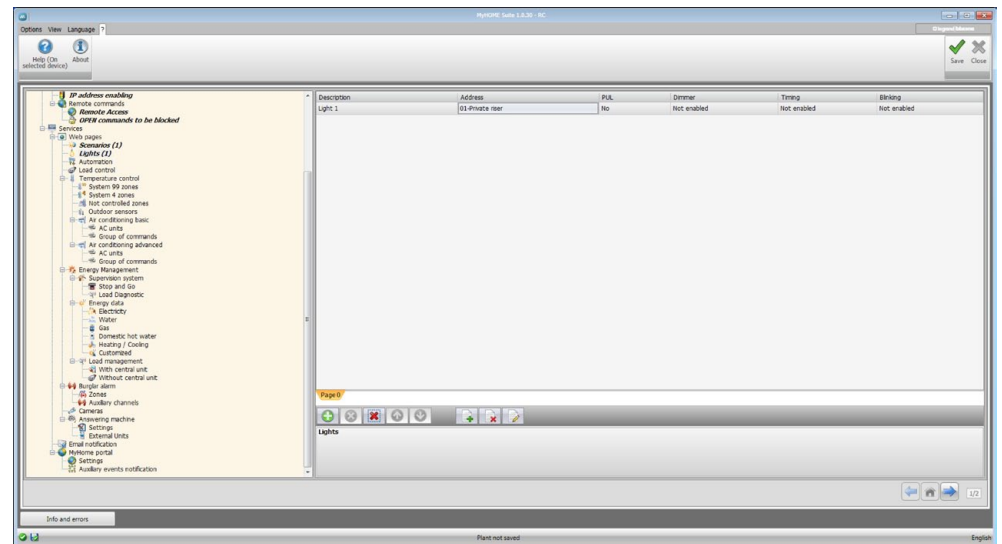
2. Select the scenario.
3. Click to [enter the SCS address](#) of the scenario module.

Lights

This window can be used to define the objects found in the “Lighting” web page, where it is possible to control the lights of the system.

It is possible to configure up to 9 Web pages with 10 objects each.

[Add the pages/objects.](#)



Configuration:

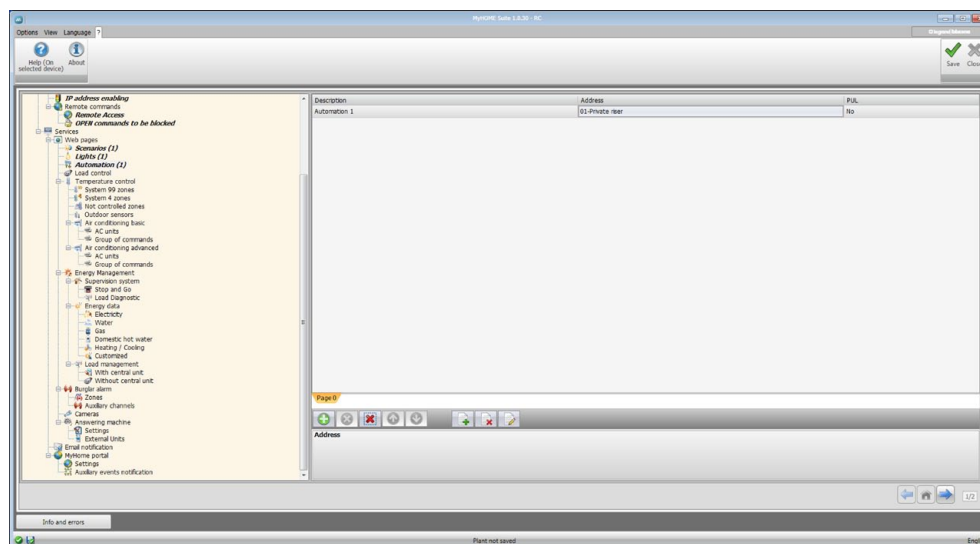
- **Description:** Enter the description of the object (15 characters max.).
- **Address:** [Enter the SCS address](#) of the actuator.
- **PUL:** Set to “Yes” if the corresponding actuator is in PUL mode.
- **Dimmer:** Set the type of Dimmer, 10/100 levels (if enabled).
- **Timing:** Set the time delay in case of delayed switching on (from 30 sec. to 15 minutes).
- **Blinking:** Set the frequency in case of flashing switching on (from 0,5 sec. to 3,5 sec).

Automation

This window can be used to define the objects found in the “Automation” web page, where it is possible to control the shutters/curtains of the system.

It is possible to configure up to 10 Web pages with 10 objects each.

[Add the pages/objects.](#)



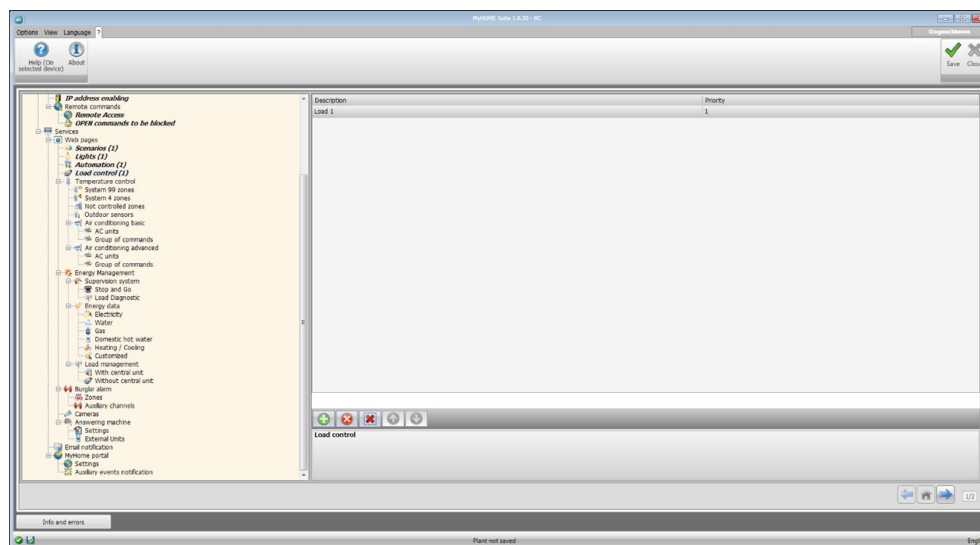
Configuration:

- **Description:** Enter the description of the object (15 characters max.).
- **Address:** [Enter the SCS address](#) of the actuator.
- **PUL:** Set to “Yes” if the corresponding actuator is in PUL mode.

Load control (system with F421 control unit)

This window can be used to define the objects found in the “Load Control” web page, where it is possible to display the status of a load and force its reactivation.

[Add the pages/objects.](#)



Configuration:

- **Description:** Enter the description of the object (15 characters max.).
- **Priority:** Enter the priority associated to the selected load.

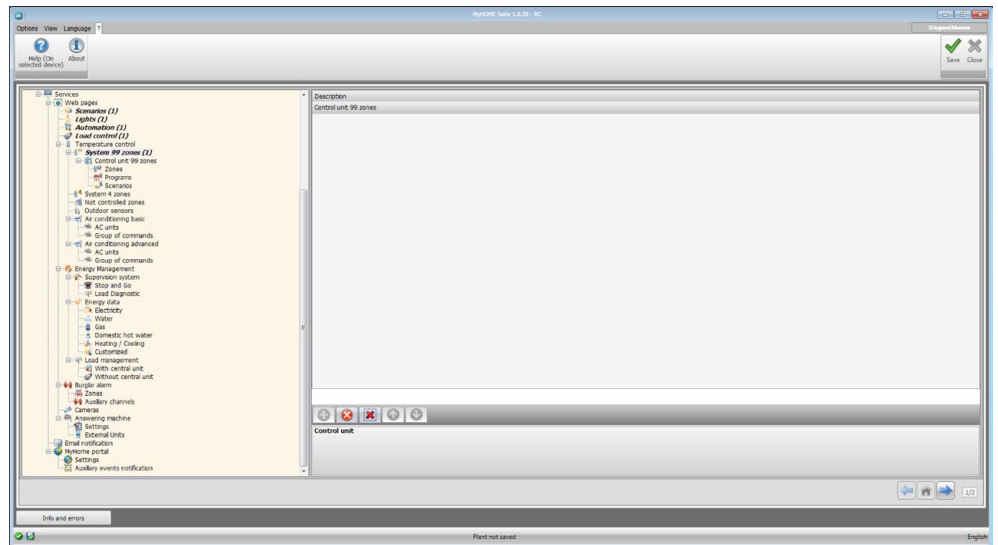
Temperature control

This section is used to define the objects found in the “Temperature control” web page, which is used to manage the temperature control system.

System 99 zones

This window can be used to insert a 99 zone control unit and customise its description.

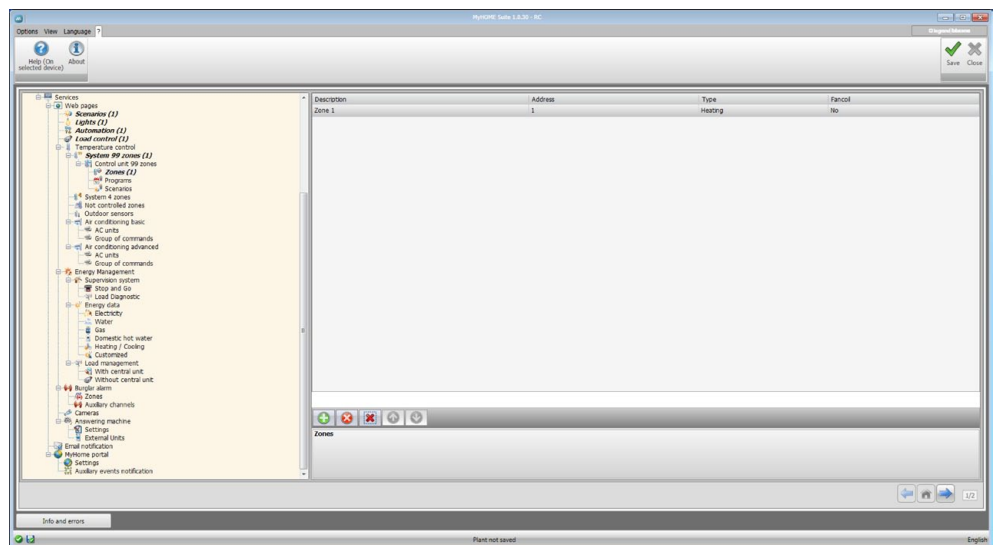
[Add the pages/objects.](#)



Zones

For each of the 99 zones the configuration parameters must be entered.

[Add the pages/objects.](#)



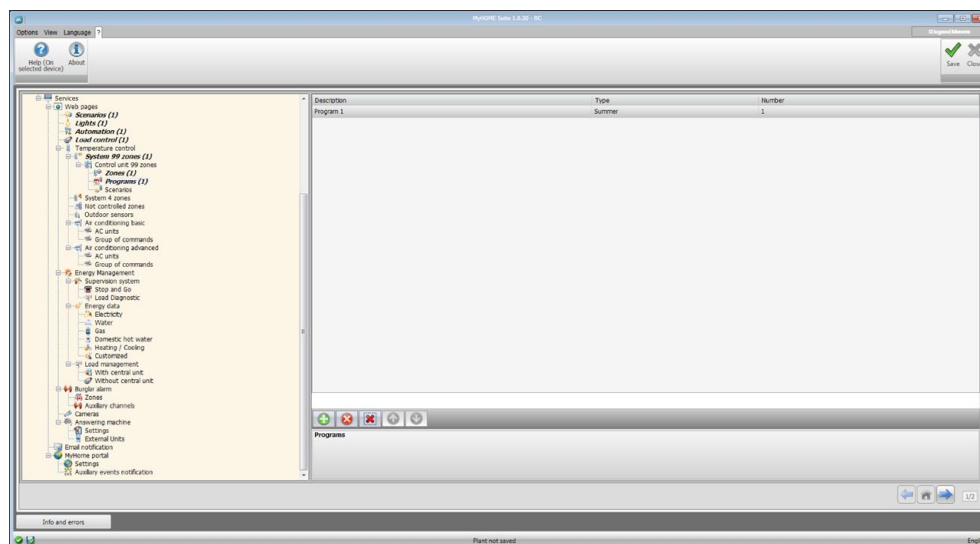
Configuration:

- **Description:** Enter the description of the object (15 characters max.).
- **Address:** Enter the zone address.
- **Type:** Enter the type of function (heating, cooling, or both).
- **Fancoil:** Specify if the type of device is a Fancoil.

Programs

For each of the two types of operations (winter/summer) up to 3 programs can be enabled, and their description customised.

[Add the pages/objects.](#)



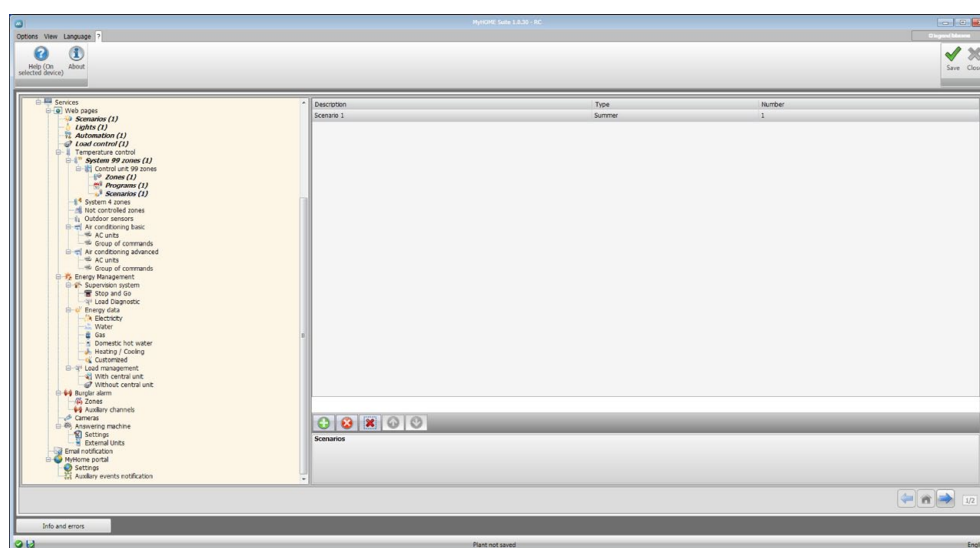
Configuration:

- **Description:** Enter the description of the object (15 characters max.).
- **Type:** Enter the type of operation (summer/winter).
- **Number:** Enter the program number.

Scenarios

For each of the two types of operations (winter/summer) up to 16 scenarios can be enabled, and their description customised.

[Add the pages/objects.](#)

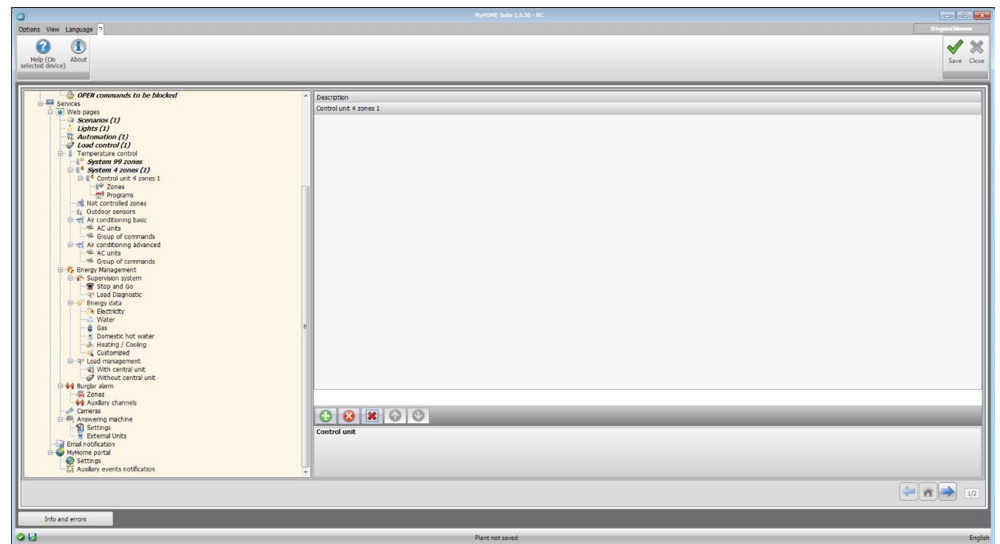


Configuration:

- **Description:** Enter the description of the object (15 characters max.).
- **Type:** Enter the type of operation (summer/winter).
- **Number:** Enter the scenario number.

System 4 zones

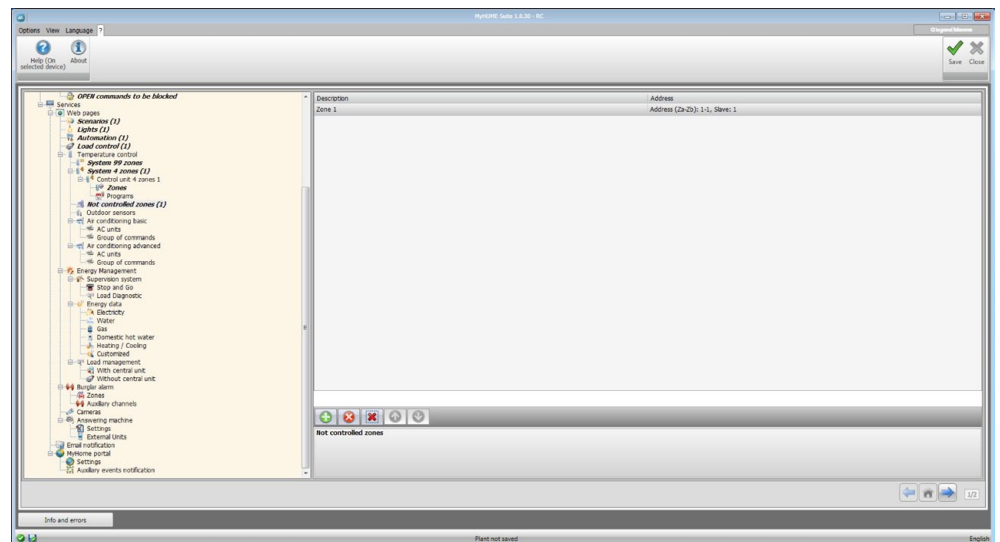
This window can be used to insert a 4 zone control unit and customise its description.
[Add the pages/objects.](#)



For the configuration of the “Zones” and “Programs” items see “System 99 zones”.
 For this type of control unit the scenario item is not included.

Not controlled zones

This window can be used to configure the zones not controlled by the control unit.
[Add the pages/objects.](#)



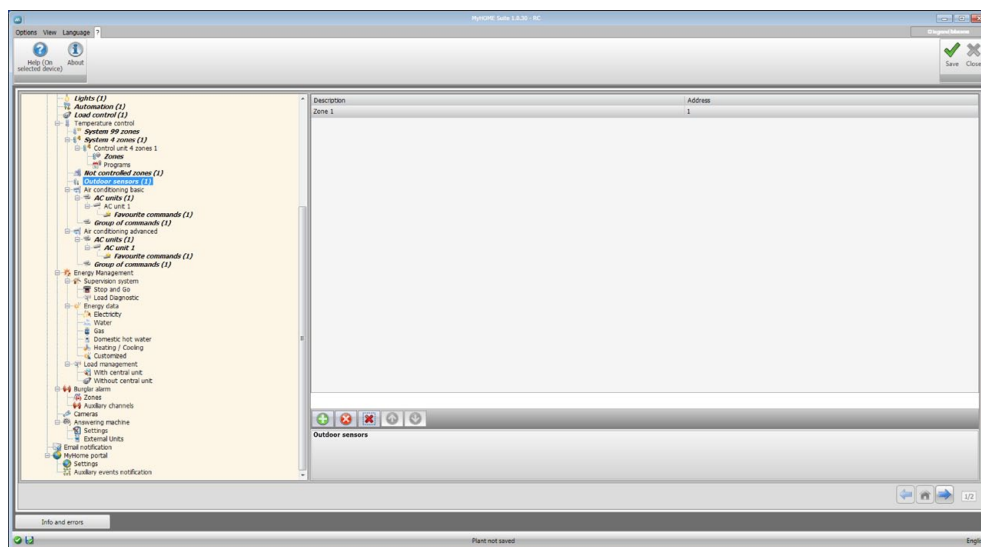
Configuration:

- **Description:** Enter the description of the object (15 characters max.).
- **Address:** Enter the zone address.

Outdoor sensors

This window can be used to configure external radio sensors.

[Add the pages/objects.](#)



Configuration:

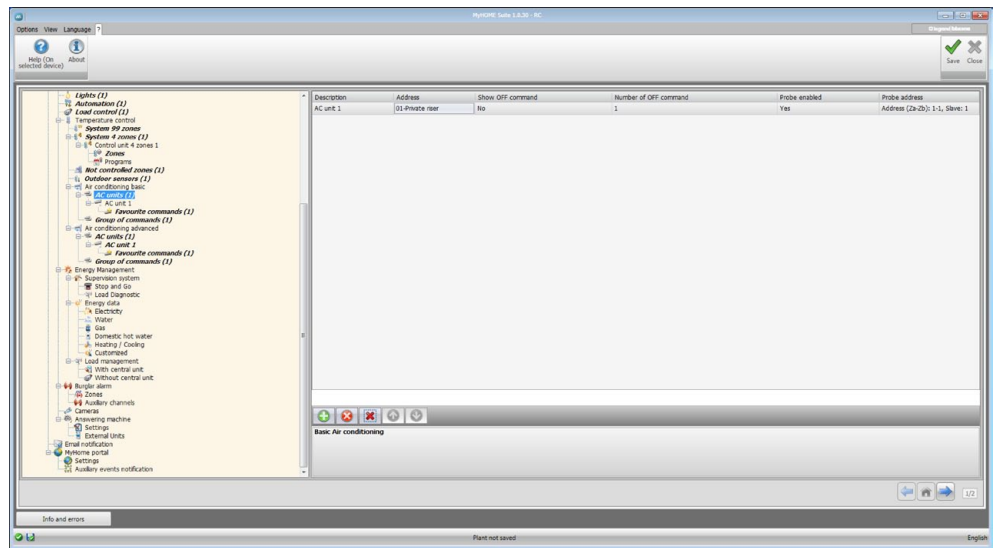
- **Description:** Enter the description of the object (15 characters max.).
- **Address:** Enter the address of the external sensor.

Air conditioning basic

This section can be used to configure the AC units and the groups of commands that will be available in the temperature control/air conditioning function page. In the case of Air conditioning basic, the management function is performed only through the 20 commands saved on the 3456 interface.

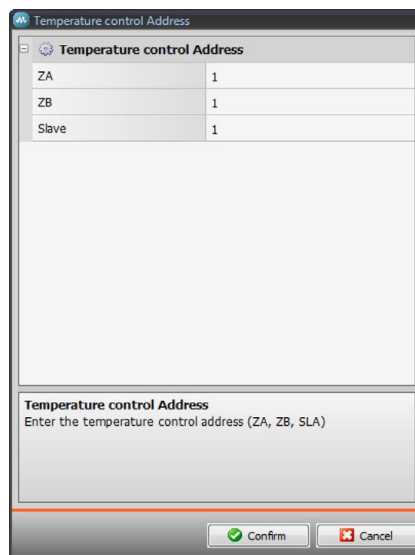
AC units

This window can be used to configured the AC unit.
[Add the pages/objects.](#)



Configuration:

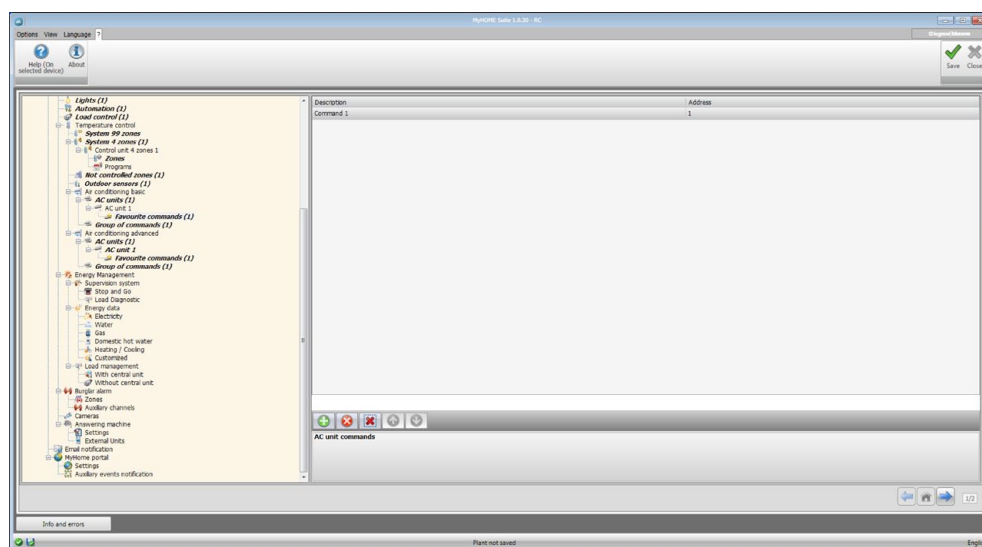
- **Description:** Enter the description of the object (15 characters max.).
- **Address:** [Enter the 3456 interface address.](#)
- **Show Off command:** Select "Yes" to display the OFF command in the web page.
- **Number of OFF command:** Enter the number of the command configured as OFF on the 3456 interface.
- **Sensor enabled:** Enable/disable the presence of a slave temperature sensor.
- **Sensor address:** Click to enter the address of the slave sensor.



Favourite commands

Enter the favourite commands selected among the 20 available on the 3456 interface for the management of the AC unit.

[Add the pages/objects.](#)



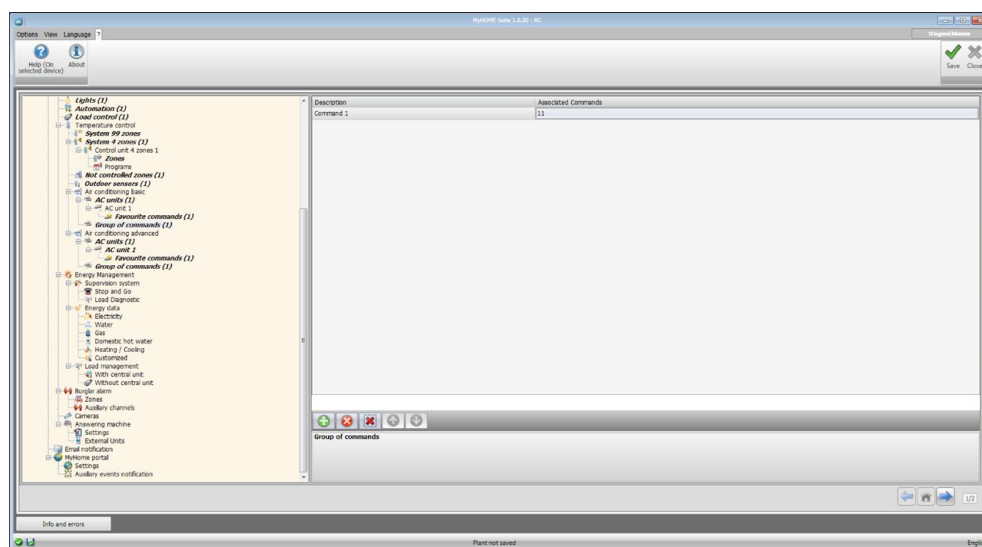
Configuration:

- **Description:** Enter the description of the object (15 characters max.).
- **Address:** Enter the address of the command on the 3456 interface.

Group of commands

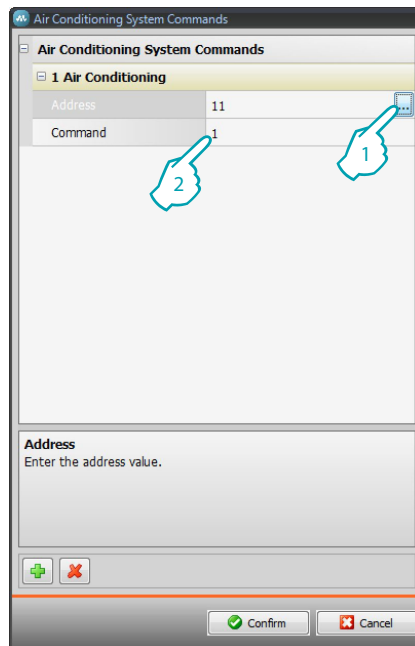
For the management of climate control it is possible to create a group of commands, selected among the ones saved on the 3456 interface.

[Add the pages/objects.](#)



Configuration:

- **Description:** Enter the description of the object (15 characters max.).
- **Associated commands:** Click to select the commands making up the group.



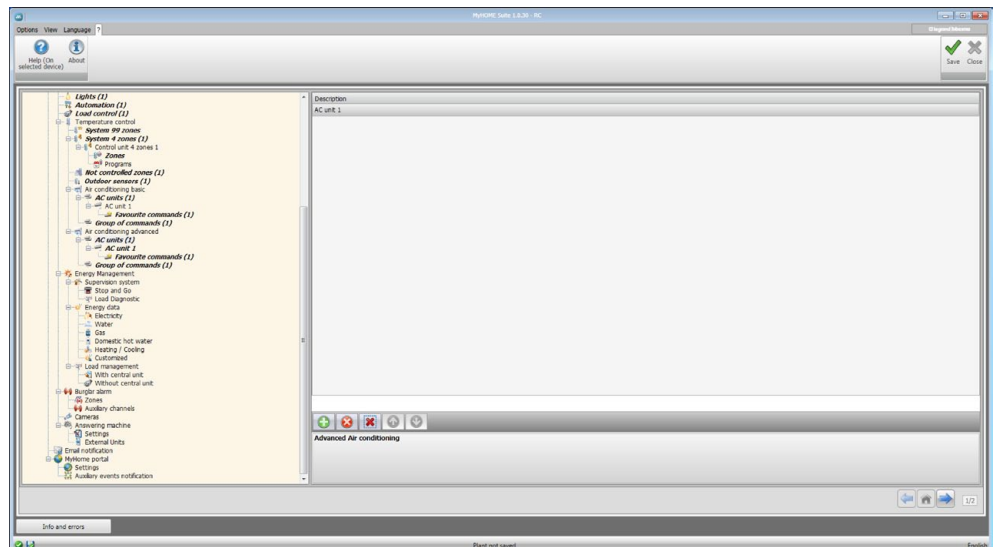
1. [Enter the 3456 interface address.](#)
2. Enter the command number.

Air Conditioning advanced

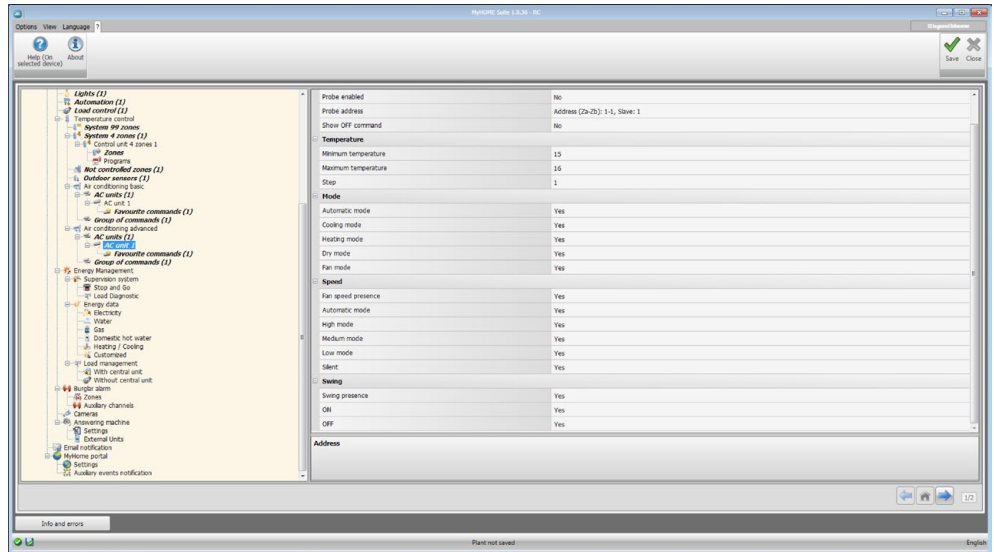
This section can be used to configure the AC unit objects and the groups of commands that will be available in the temperature control/air conditioning function page in advanced mode. The management is performed directly as if the remote control of the splitter was used or in any case using the favourite commands to be created in the appropriate sections.

AC units

Enter the AC units to configure.
[Add the pages/objects.](#)

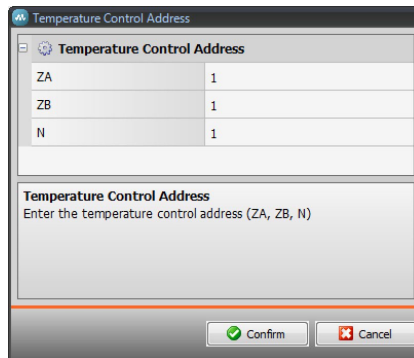


This window can be used to configure the parameters of the AC unit.

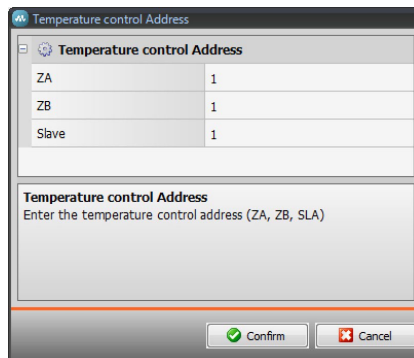


Configuration:

- **Address:** Click to enter the 3456 interface address.



- **Sensor enabled:** Enable/disable the presence of a slave temperature sensor.
- **Sensor address:** Click to enter the address of the slave sensor.

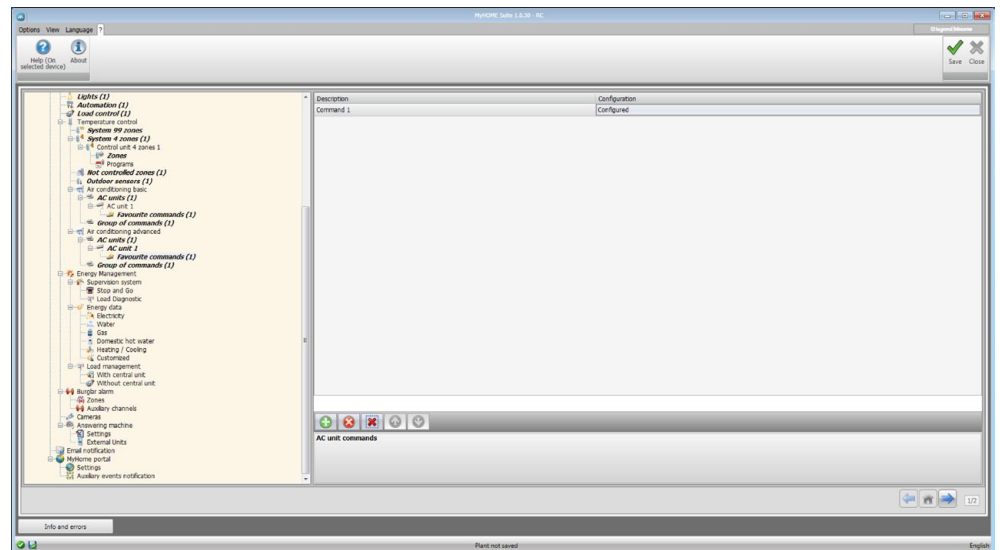


- **Show Off command:** Enable/disable the Off command.
- **Minimum temperature:** Enter the minimum temperature that can be handled by the splitter.
- **Maximum temperature:** Enter the maximum temperature that can be handled by the splitter.
- **Step:** Enter the desired increase step, choosing between 0,5 °C e 1 °C.
- **For the Automatic, Cooling, Heating, Dry, Fan, Fan speed presence, Automatic, High, Medium, Low, Silent, Swing presence, ON, OFF modes:** Select Yes to make the function available in the corresponding page.

Favourite commands

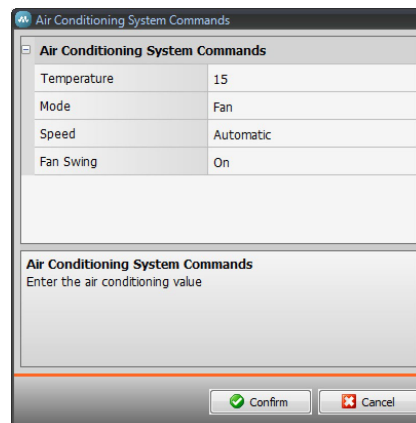
Enter the favourite commands for the management of the AC unit.

[Add the pages/objects.](#)



Configuration:

- **Description:** Enter the description of the object (15 characters max.).
- **Configuration:** Click to set the parameters that will be performed by the command configured.

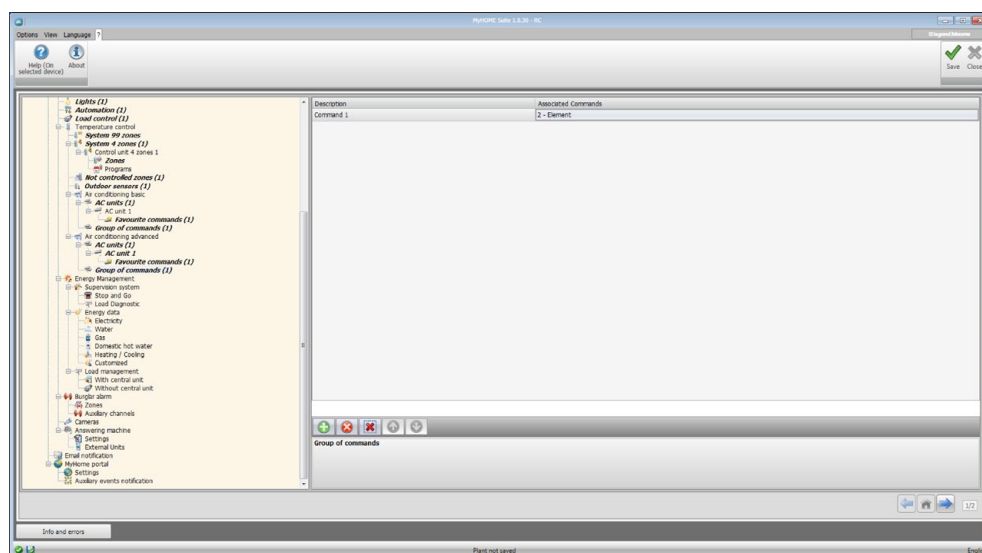


- **Temperature:** Select the temperature to set.
- **Mode:** Select the operating mode.
- **Speed:** Select the fan speed.
- **Fan Swing:** Enable the swing.

Group of commands

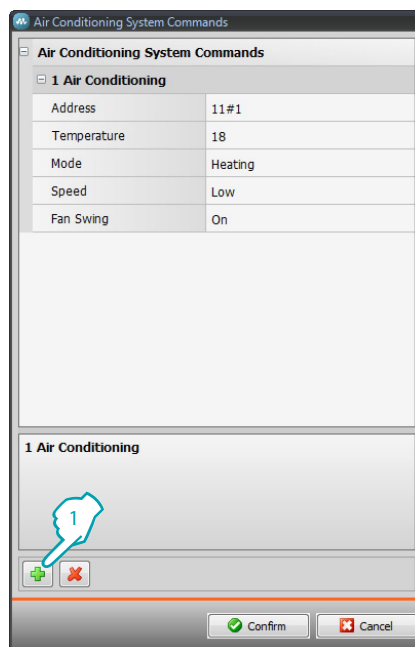
For the management of climate control it is possible to create a group of commands that will be performed at the same time.

[Add the pages/objects.](#)

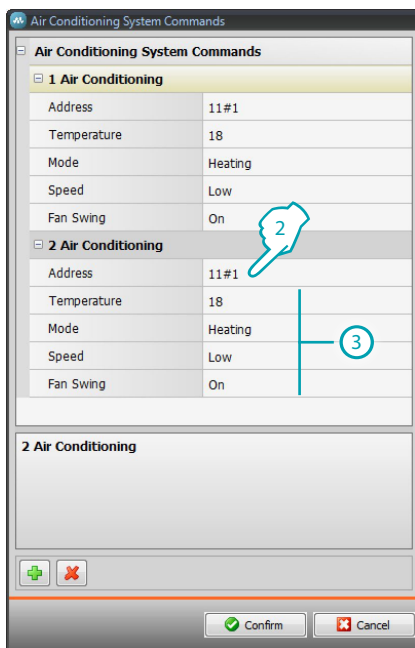


Configuration:

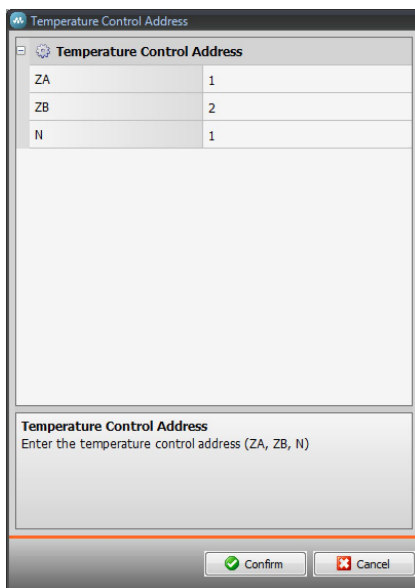
- **Description:** Enter a description of the group of commands (15 characters max.).
- **Associated commands:** Click to select the commands making up the group.



1. Enter the commands.



2. Click to enter the 3456 interface address.



3. Configure the command.
 Select the temperature to set, the operating mode, the fan speed and the enabling of the swing.

Energy Management

This section is used to define the objects found in the “Energy Management” web page, where it is possible to monitor the system, display the energy data, and manage the loads.

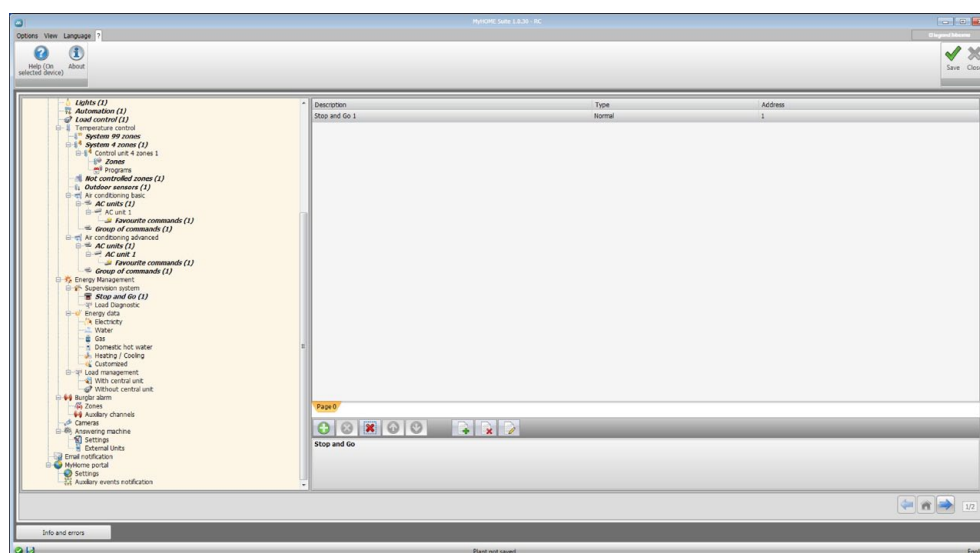
Supervision system

This section can be used to configure the system supervision functions that will be available in the “Supervision” web page.

Stop and Go

This section can be used to configure the Stop & Go resetting modules for the control of the automatic earth leakage relay reset function, and other functions.

[Add the pages/objects.](#)



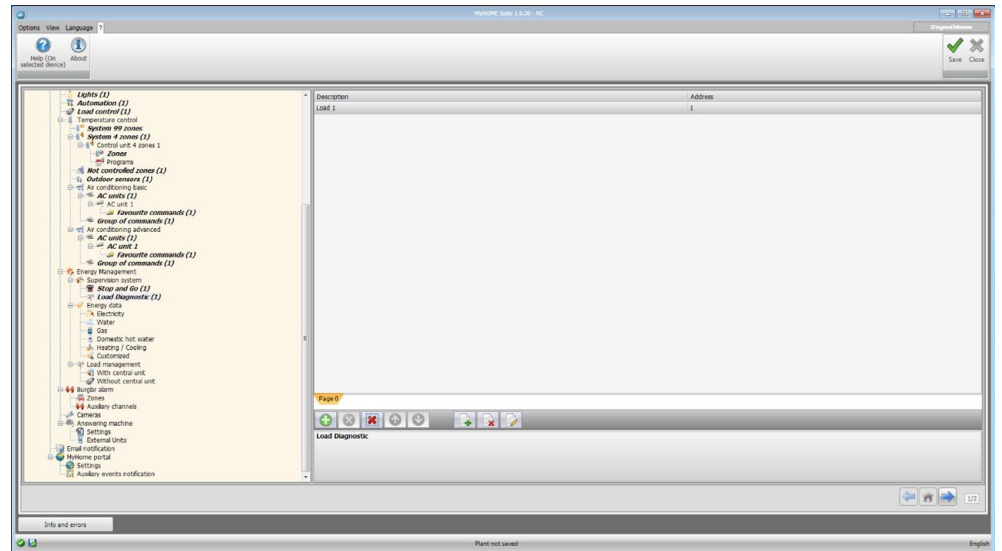
Configuration:

- **Description:** Enter the description of the object (15 characters max.).
- **Type:** Select the type of resetting module, either Normal, Plus, or Btest.
- **Address:** Enter the Stop and Go address.

Load diagnostic

This section can be used to set which loads can be subjected to diagnostic, to control their operating status (advanced actuators only).

[Add the pages/objects.](#)





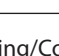


Configuration:

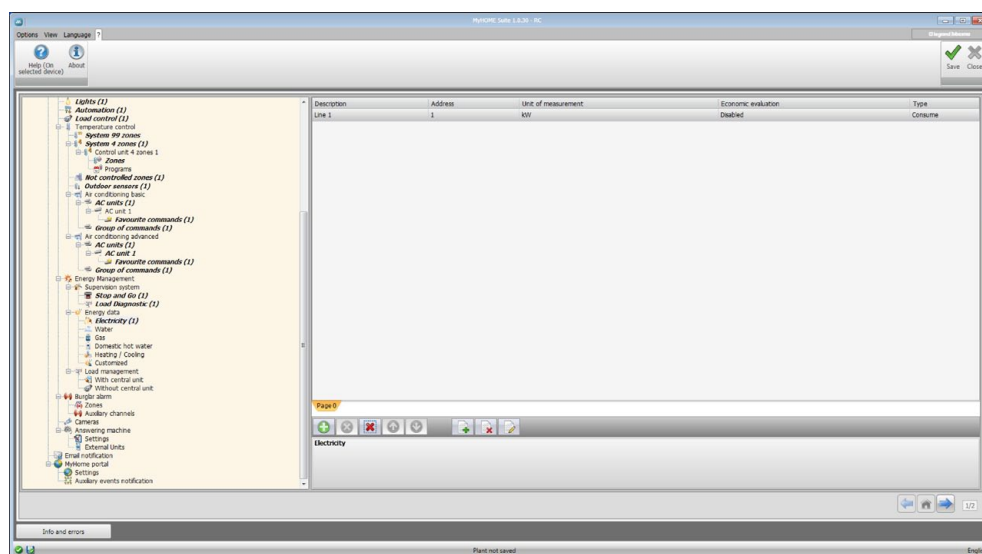
- **Description:** Enter the description of the load (15 characters max.).
- **Address:** Enter the address of the actuator.

Energy data

This section can be used to configure the parameters that enable displaying the data (consumption/production) measured on the system in the “Energy data” web page. Several measurement parameters are available:

Meter type	Description	Unit
 Electricity	It display the electricity consumed or produced by the system.	Kw
 Water	It measures the water consumed. Connect the meter to a water meter with impulse output.	m ³
 Gas	It displays gas consumption. Connect the interface to a gas meter with impulse output.	m ³
 DHW	It measures the hot water consumed. Connect to a hot water meter or to the corresponding impulse output of a heat measurement control unit that can be found in the apartment user modules (in case of central heating).	Kw
 Heating/Cooling	It displays the calories/frigorities measured on the heating/cooling system. Connect to a meter with heat impulse output (KWh).	Kw

Add the pages/objects.



The configuration is the same for all meters.

Configuration:

- **Description:** Enter the description of the object (15 characters max.).
- **Address:** Enter the meter address.
- **Unit of measurement:** Select the unit of measure used to display the consumption.
- **Economic evaluation:** Enable/disable the economic evaluation.
Enable this function to create a row in the "[Economic evaluation setup](#)" where the user can set the tariff to apply to the specific consumption.

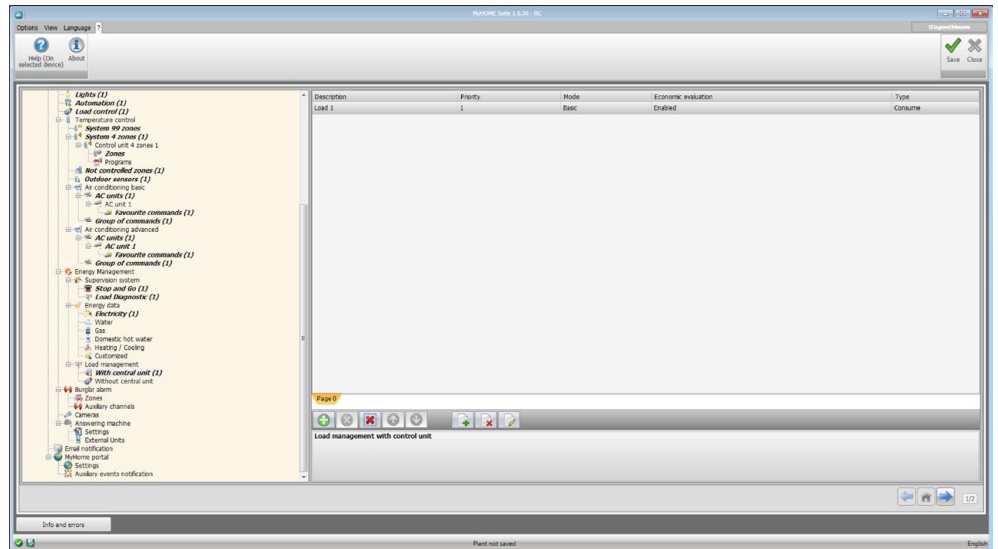


The economic evaluation is performed based on the tariff indicated in the "[Economic evaluation setup](#)" section.

- **Type:** Define if the meter is a consumption or a production meter.

Load management with central unit

This section can be used to manage the new Load Management system, to display the status of a load, force the re-activation based on priorities, set the forcing time, and display the consumption. [Add the pages/objects.](#)



Configuration:

- **Description:** Enter the description of the load (15 characters max.).
- **Priority:** Select the load priority.
- **Mode:** Set if this is a basic or an advanced actuator. In the second case, the instantaneous consumption and 2 meters can be displayed.
- **Economic evaluation:** Enable/disable the economic evaluation (Advanced mode only). The tariff is set in the ["Economic evaluation setup"](#) section.
- **Type:** Define if the load is a consumption or a production load.

Load management without central unit

The configurations for this mode are the same as the "With Control unit" mode, with the exception of the "Mode" field, which is automatically set to "Advanced".

The object of this function is to display the consumptions of the loads, even without control/forcing.

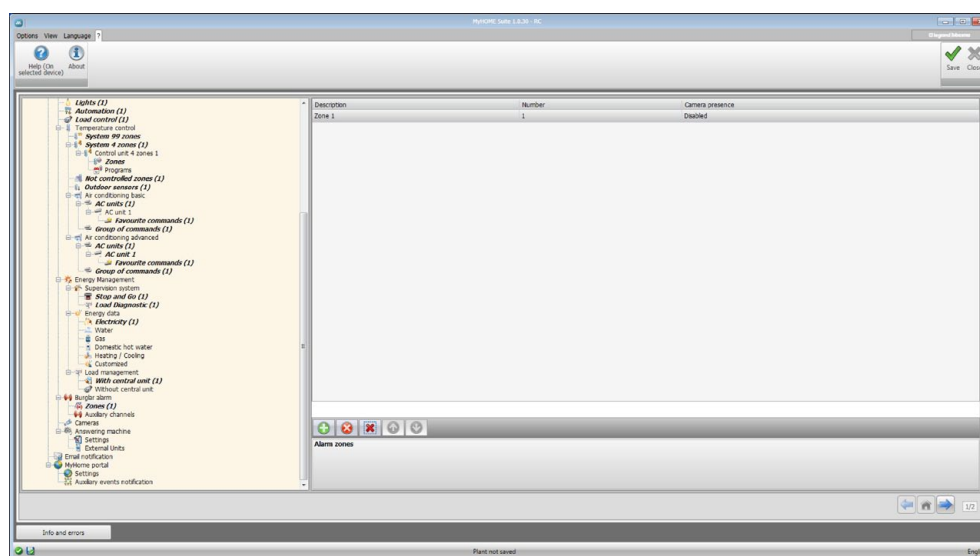
Burglar-alarm

This section can be used to configure the zones and the auxiliary channels displayed in the "Alarms" web page.

Zones

In this window you can customise the descriptions of the zones of the Burglaralarm system. The descriptions entered will appear in the messages that the device sends to the Web page every time there is a Burglar-alarm or Technical Alarm event in the system.

[Add the pages/objects.](#)

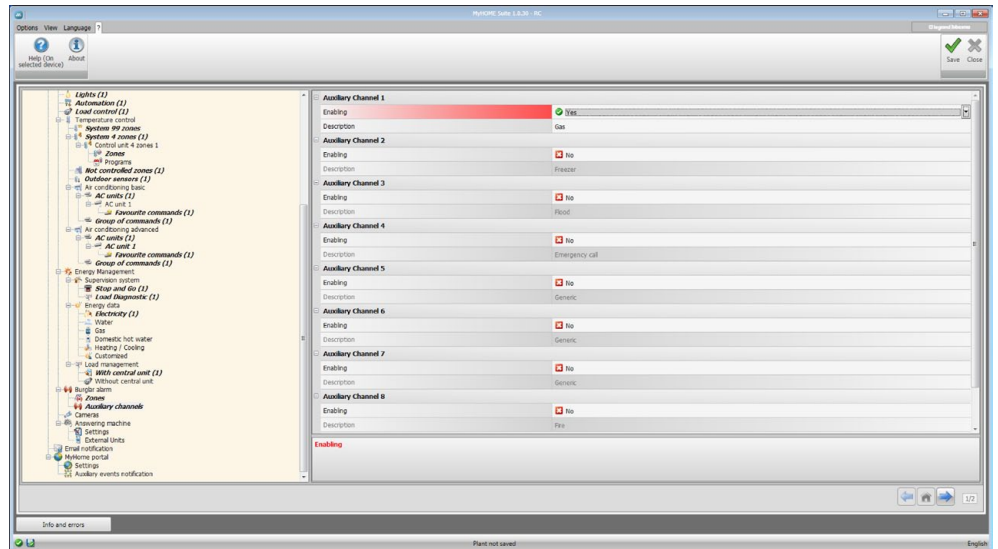


Configuration:

- **Description:** Enter the description of the zone (15 characters max.).
- **Number:** Enter the zone number.
- **Camera Presence:** Enable the Camera Presence so that the e-mail for the notification of a zone burglar alarm sent by the device will include a compressed file (.zip) containing the images (.jpg) recorded by the camera.
Example: If the sensor the alarm comes from is configured with Z=2 (zone 2), this is capable of automatically activating the camera (with the exception of any Entrance Panel cameras) configured with P = 2.

Auxiliary channels

The same procedure used for the zones may be used to customise the descriptions of the 9 auxiliary channels used for the notification of technical alarms (for example it is possible to enable **Auxiliary channel 1** and assign the description “gas leak”).



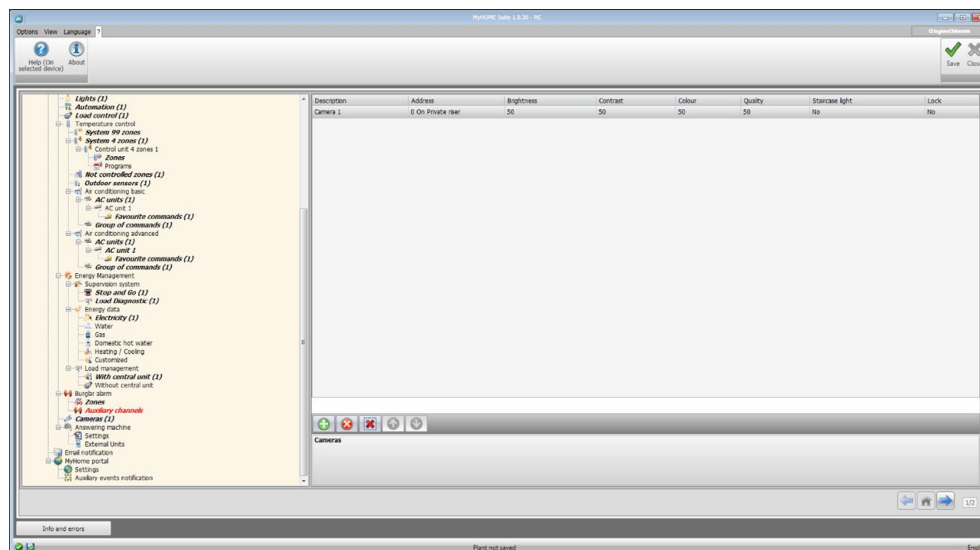
Configuration:

- **Enabling:** Enabling/disabling the auxiliary channel.
- **Description:** Enter the description of the auxiliary channel (15 characters max.).

Cameras

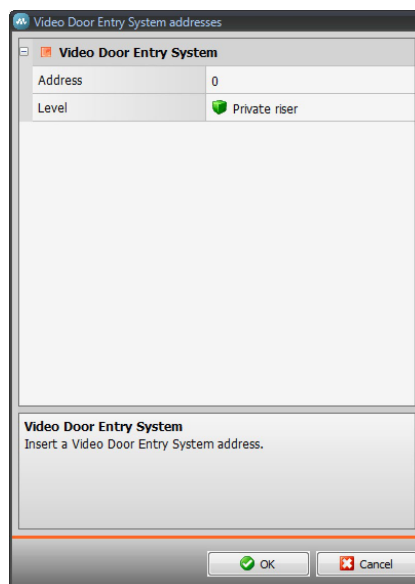
This section can be used to define the objects found in the “CCTV” web page, where it is possible to manage the cameras found in the system.

[Add the pages/objects.](#)



Configuration:

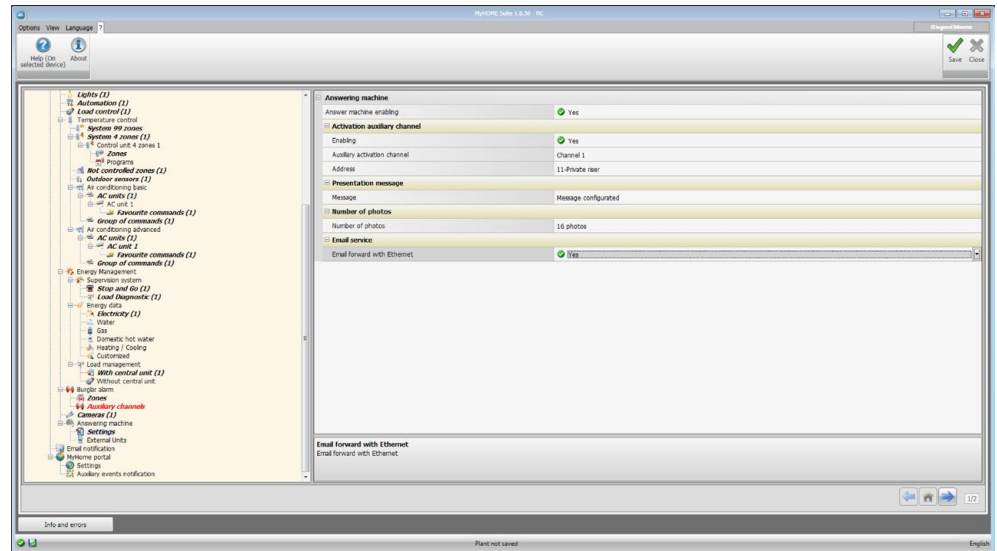
- **Description:** Enter the description of the camera (15 characters max.).
- **Address:** Click to select the camera address (0 to 99).



- **Brightness / Contrast / Colour / Quality:** Select the picture setting levels (from 0% to 100%).
- **Staircase light:** Enable the presence of the staircase light actuator.
- **Lock:** Enable the presence of the door lock release.

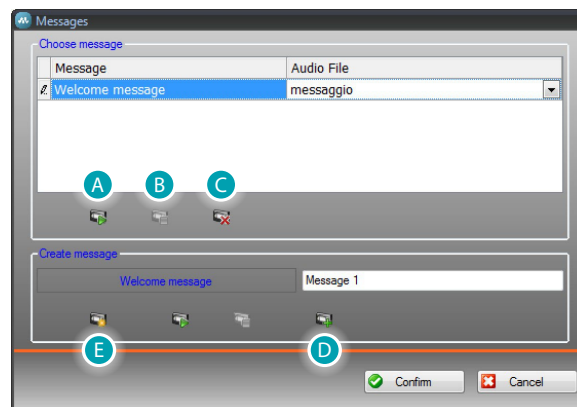
Answering machine - Settings

This screen can be used to enable and configure the video door entry system answering system found in the corresponding web page.



Configuration:

- **Answering machine enabling:** Enable the video answering system function.
- **Activation auxiliary channel:** By enabling the activation of the auxiliary channel, it is possible to use a command to enable/disable the answering system, and insert a luminous signal for the activation status.
- **Auxiliary activation channel:** Select the auxiliary activation Channel used by the control device, for local enabling/disabling of the “Video door entry Answering system”.
- **Address:** Click to [enter the SCS address](#) of the answering system status notification actuator.
- **Message:** Select one of the pre-recorded files (.wav) or record a new message. Use the pushbuttons in the window to:



- (A) Listen to the selected message
- (B) Stop the playing or recording of the message
- (C) Cancel the selected file
- (D) Store a new message
- (E) Record a new message

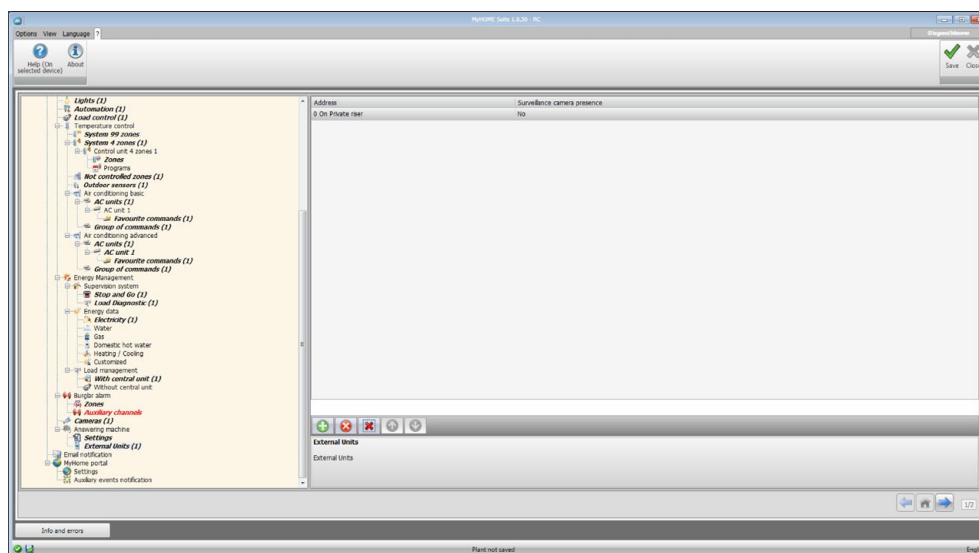


- **Number of photos:** Select the number of pictures that the video door entry entrance panel camera will send to the device. You can choose from 1 to 16 photographs. If the “**Email service**” option is active, the pictures will reach the user as attachments to an e-mail message.
- **Email service:** Enable this service to receive the e-mail message containing the recorded pictures, selecting the Ethernet transmission method.

External Units

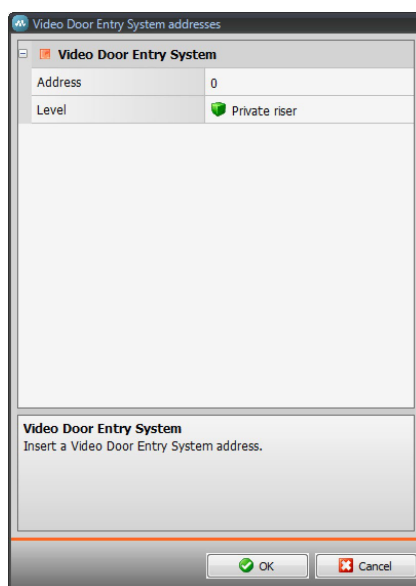
This window can be used to enable up to 10 External Units of the video door entry system, to which the answering system will answer, if enabled.

[Add the pages/objects.](#)



Configuration:

- **Address:** Configure the entrance panel address (0 – 95).

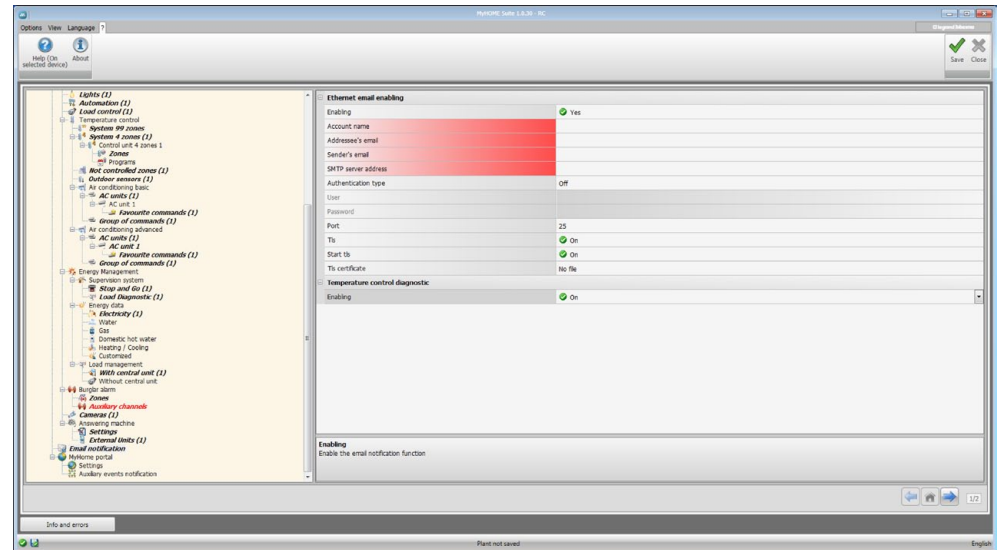


- **Surveillance camera presence:** Activate the camera presence.

Email notification

This window can be used to enable e-mail forwarding of alarms.

Ethernet email enabling

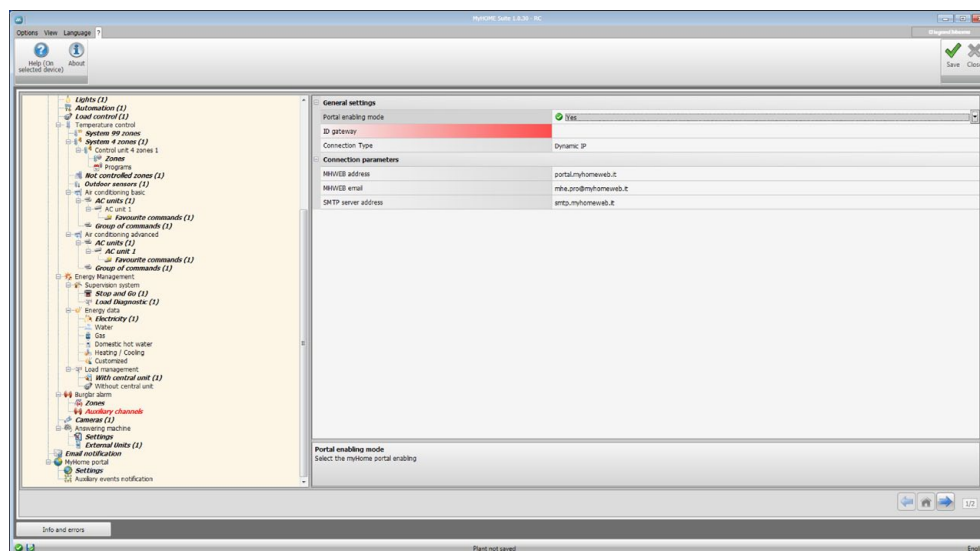


Configuration:

- **Enabling:** Enable/Disable the notification via Ethernet e-mail.
- **Account name:** Enter the name of the account.
- **Addressee's email:** Enter the electronic mail address to which the e-mail will be sent.
- **Sender's email:** Enter the sender's e-mail address.
- **SMTP server address:** Enter the IP address of the mail server in numerical format or in text format (contact the network administration to obtain this information).
- **Authentication type, User, Password, Port, Tls, Start tls, Tls certificate:** Enter the correct parameters of your own e-mail account.
For Tls enter a certified file.
- **Temperature control diagnostic:** By enabling this function, when there is a fault in the Temperature control system a message will be sent to the e-mail address provided.

MyHOME portal

By enabling the “Portal Enabling” item, this window can be used to enter the Gateway ID of the MyHOME_Web Portal, and complete the configuration using the “Connection parameters”, and the “Auxiliary events notification” sections.



Configuration:

- **Portal enabling mode:** Enable/Disable the connection to the MyHOME Portal.
- **ID gateway:** Insert the portal system ID code.
- **Connection type:**
 - Select the type of connection:
 - **Fixed IP:** if a fixed address is available
 - **Dynamic IP:** if the fixed IP address is not available; it will be possible to set the MyHOME portal access ports on the router
 - **Active Web Server connection (WAC):** In private networks where the system cannot be reached directly by the Internet (e.g.: Fastweb), or the router cannot be configured for using the MyHOME_Web services, it will be necessary to set the WAC connection mode (Active Connection of the Web Server) in the configuration of the Web Server and the system on the Portal.

Connection parameters

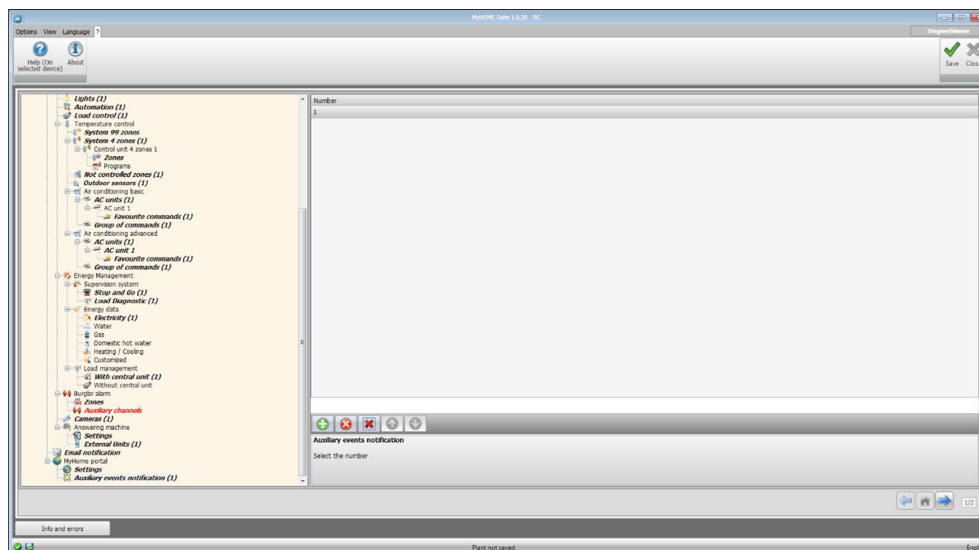
The data in this section have been pre-filled in by default. Errors in changing the information present may compromise the operation of the services.

It is however recommended that the information match the data provided by your service provider.

Auxiliary events notification

This section can be used to select which of the events generated on the auxiliary channels by the Automation and Burglar Alarm devices must be sent to the MyHOME_Web portal.

[Add the pages/objects.](#)

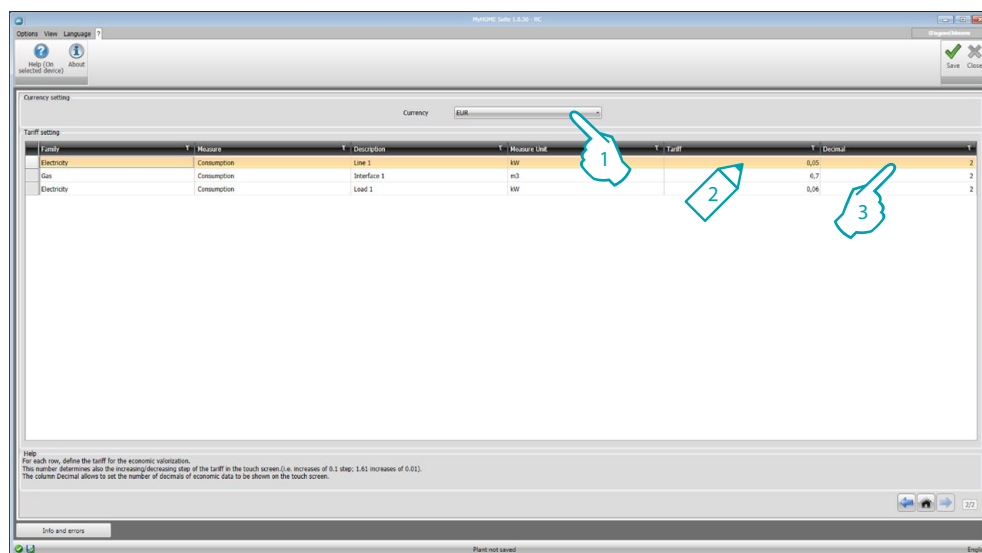


Configuration:

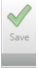

- **Number:** Enter the number of the channel used to send the information to the portal.

Economic evaluation setup

This page can be used to set currency and tariffs that will be applied to the consumptions set in the “[Energy data](#)” and “[Load management](#)” sections.



1. Select the currency.
2. Enter the tariff.
3. Enter the number of decimals to display on Web Server for the evaluation.

At the end of the configuration click  to save the project, and  to return to the Global Area and [export the project](#) or [send it to the device](#).

Legrand SNC
128, av. du Maréchal-de-Lattre-de-Tassigny
87045 Limoges Cedex - France
www.legrand.com

BTicino SpA
Viale Borri, 231
21100 Varese - Italy
www.bticino.com