



**Trasformatore di
corrente per reti
bassa tensione
Misura**

Trasformatore monofase di corrente
Primario a sbarra passante
Corrente primaria 400...4000A
Corrente secondaria 1 - 5A
Classi di precisione: cl.0,5 - 1
Prestazione nominale 1...50VA

**Current transformers
for low-voltage
network
Measure**

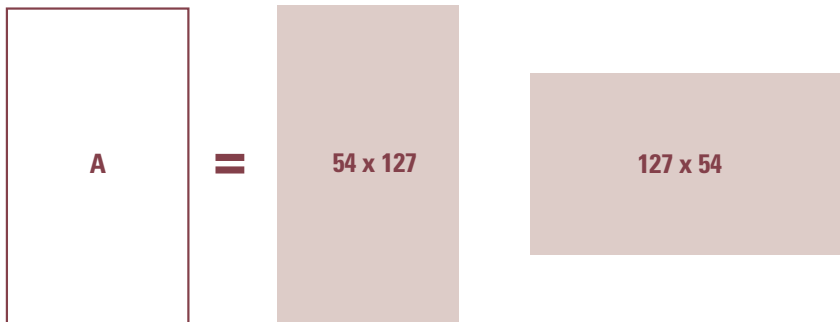
Single-phase current transformer
Passing bus bar primary
Primary current 400...4000A
Secondary current 1 - 5A
Accuracy class: cl.0,5 - 1
Rated burden 1...50VA



TAS127B



FINESTRA WINDOW



Fissaggio su sbarra verticale
Fixing on vertical bar

Coprimorsetto sigillabile
Sealable terminal cover
(Opzione Option)



Morsetti lato lungo
Fissaggio su sbarra orizzontale

Terminals on long side
Fixing on horizontal bar

TAS127B
fissaggio su sbarra verticale
fixing on vertical bar

CODICE ORDINAZIONE / ORDER CODE		Corrente primaria Primary current	CL. 0,5	CL. 1
Secondario / Secondary				
5A	1A	A	VA	VA
TASS50C400	TASS10C400	400	1	7
TASS50C500	TASS10C500	500	3	10
TASS50C600	TASS10C600	600	5	12
TASS50C700	TASS10C700	700	8	15
TASS50C750	TASS10C750	750	10	15
TASS50C800	TASS10C800	800	10	15
TASS50D100	TASS10D100	1000	12	20
TASS50D120	TASS10D120	1200	15	25
TASS50D125	TASS10D125	1250	15	25
TASS50D150	TASS10D150	1500	20	30
TASS50D160	TASS10D160	1600	20	30
TASS50D200	TASS10D200	2000	25	30
TASS50D250	TASS10D250	2500	30	50
TASS50D300	TASS10D300	3000	30	50
TASS50D320	TASS10D320	3200	30	50
TASS50D400	TASS10D400	4000	30	50
ATACOP04		Accessorio coprimorsetto sigillabile / Accessory sealable terminal cover		

TAS127B
morsetti lato lungo fissaggio su sbarra orizzontale
terminals on long side fixing on horizontal bar

CODICE ORDINAZIONE / ORDER CODE		Corrente primaria Primary current	CL. 0,5	CL. 1
Secondario / Secondary				
5A	1A	A	VA	VA
TASS50C4003	TASS10C4003	400	1	7
TASS50C5003	TASS10C5003	500	3	10
TASS50C6003	TASS10C6003	600	5	12
TASS50C7003	TASS10C7003	700	8	15
TASS50C7503	TASS10C7503	750	10	15
TASS50C8003	TASS10C8003	800	10	15
TASS50D1003	TASS10D1003	1000	12	20
TASS50D1203	TASS10D1203	1200	15	25
TASS50D1253	TASS10D1253	1250	15	25
TASS50D1503	TASS10D1503	1500	20	30
TASS50D1603	TASS10D1603	1600	20	30
TASS50D2003	TASS10D2003	2000	25	30
TASS50D2503	TASS10D2503	2500	30	50
TASS50D3003	TASS10D3003	3000	30	50
TASS50D3203	TASS10D3203	3200	30	50
TASS50D4003	TASS10D4003	4000	30	50
ATACOP04		Accessorio coprimorsetto sigillabile / Accessory sealable terminal cover		

NORME DI RIFERIMENTO

EN/IEC 61869-1, 61869-2

CARATTERISTICHE TECNICHE

Corrente nominale primaria I_{pr} : 400...4000A

Frequenza nominale: 50Hz

Frequenza di funzionamento: 47...63Hz

Opzione: frequenza nominale 400Hz (prestazioni da definire)

Corrente termica nominale permanente I_{cth} : 100% I_{pr}

Corrente termica nominale di cortocircuito I_{th} : $< 60 I_{pr}$ (max. 90kA)

Corrente nominale dinamica I_{dyn} : $2,5 I_{th}$

Fattore di sicurezza (FS): ≤ 5

Corrente nominale secondaria I_{sr} : 5-1A

Prestazione nominale: 1...50VA

Classe di precisione: 0,5 - 1

REFERENCE STANDARDS

EN/IEC 61869-1, 61869-2

SPECIFICATIONS

Rated primary current I_{pr} : 400...4000A

Rated frequency: 50Hz

Working frequency: 47...63Hz

Option: rated frequency 400Hz (burdens to the advised)

Rated continuous thermal current I_{cth} : 100% I_{pr}

Rated short-time thermal current I_{th} : $< 60 I_{pr}$ (max. 90kA)

Rated dynamic current I_{dyn} : $2,5 I_{th}$

Instrument security factor (FS): ≤ 5

Rated secondary current I_{sr} : 5 - 1A

Rated burden: 1...50VA

Accuracy class: 0,5 - 1

Massima potenza dissipata ¹: ≤ 23W

¹ Per il dimensionamento termico dei quadri

Temperatura max ammissibile su cavo a barra primario: 125°C

Funzionamento garantito a secondario aperto per 1 minuto

I trasformatori di corrente non dovrebbero funzionare con l'avvolgimento secondario aperto a causa delle sovratensioni potenzialmente pericolose e dei surriscaldamenti che possono verificarsi.

Per ovviare a questo problema è possibile utilizzare l'accessorio ATAP015 (NT710) da collegare direttamente al secondario del trasformatore, in grado di rilevare costantemente la tensione ai morsetti e qualora questa raggiunga il valore di soglia (18V) a causa di una interruzione dei collegamenti o alla rimozione delle apparecchiature, provvede automaticamente alla richiusura del circuito.

Al ripristino delle condizioni normali di funzionamento si esclude automaticamente. Collegato permanentemente al secondario del trasformatore da proteggere, non influisce minimamente sulle caratteristiche e prestazioni del TA; non necessita di alcuna alimentazione esterna (autoalimentato).

PRESCRIZIONI RELATIVE ALL'ISOLAMENTO

Trasformatore a secco, isolamento in aria

Tensione massima di riferimento per l'isolamento U_m : 0,72kV valore efficace

Livello di isolamento nominale: 3kV valore efficace 50Hz/1min

Classe di isolamento (EN/IEC 61869-1, 61869-2): B

LIMITI DELL'ERRORE DI CORRENTE E DELL'ERRORE D'ANGOLO

(EN/IEC 61869-1, 61869-2)

Classe di precisione Accuracy class	Errore di corrente (rapporto) in percentuale (±) alla percentuale della corrente nominale sottoindicata					Errore d'angolo(±) alla percentuale della corrente nominale sottoindicata									
	± Percentage current (ratio) error at percentage of rated current shown below					Minuti Minutes					Centiradiani Centiradians				
	5	20	50	100	120	5	20	50	100	120	5	20	50	100	120
0,5	1,5	0,75		0,5	0,5	90	45		30	30	2,7	1,35		0,9	0,9
1	3,0	1,5		1,0	1,0	180	90		60	60	5,4	2,7		1,8	1,8

L'errore di corrente e l'errore d'angolo a frequenza nominale non devono superare i valori indicati in tabella, quando la prestazione è uguale a un qualsiasi valore compreso tra il 25% e il 100% della prestazione nominale.

Max. power dissipation ¹: ≤ 23W

¹ For switchboard thermal calculation

The allowed max cable or busbar temp is: 125°C

Working time guaranteed with secondary winding open for 1 minute

Current transformers should not be operated with the secondary winding open-circuited because of the potentially dangerous over-voltages and overheating which can occur.

To obviate this problem, it is possible to use ATAP015 (NT710) accessory to be directly connected with the transformer secondary winding, which is able to continuously detect the terminal voltage and, if the voltage reaches the threshold value (18V) owing to a connection breakdown or disconnection of the devices, automatically closes again the circuit.

When the normal working conditions are restored, it automatically disconnects. Continuously connected with the secondary winding of the transformer to protect, it doesn't affect at all the current transformer features or performances. It doesn't need any external supply (self-supplied).

INSULATION REQUIREMENTS

Dry transformer, air insulation

Highest voltage for equipment U_m : 0,72kV r.m.s.

Rated insulation level: 3kV r.m.s. 50Hz/1min

Class of insulation (EN/IEC 61869-1, 61869-2): B

LIMITS OF CURRENTS ERROR AND PHASE DISPLACEMENT

(EN/IEC 61869-1, 61869-2)

The current error and phase displacement at rated frequency shall not exceed the values given in table when the secondary burden is any value from 25% to 100% of the rated burden.

CONDIZIONI AMBIENTALI

Installazione in situazione non esposta (EN/IEC 61869-1, 61869-2)

Temperatura di riferimento: 23°C ± 1°C

Temperatura di impiego: -25...50°C ($I_{pr} \leq 1000A$) - -25...40°C ($I_{pr} > 1000A$)

Temperatura media giornaliera: ≤ 30°C

Temperatura di magazzinaggio: -40...85°C

Umidità relativa: ≤ 85%

Adatto all'utilizzo in clima tropicale

ENVIRONMENTAL CONDITIONS

Non-exposed installation (EN/IEC 61869-1, 61869-2)

Reference temperature: 23°C ± 1°C

Nominal temperature range: -25...50°C ($I_{pr} \leq 1000A$) - -25...40°C ($I_{pr} > 1000A$)

Daily mean temperature: ≤ 30°C

Limit temperature range for storage: -40...85°C

Relative humidity: ≤ 85%

Suitable for tropical climates

CUSTODIA

Materiale custodia: policarbonato autoestinguente

Grado di protezione (EN/IEC 60529): IP40 custodia, IP00 morsetti (IP20 con coprimorsetto sigillabile)

Opzione: coprimorsetto sigillabile

Peso: 1300 grammi (Max.)

HOUSING

Housing material: self extinguishing polycarbonate

Protection degree (ENIEC 60529): IP40 housing, IP00 terminals (IP20 with sealable terminal cover)

Option: sealable terminal cover

Weight: 1300 grams (Max.)

CONNESSIONI

PRIMARIO

Cavo o sbarra passante

Fissaggio sbarra: viti, con cappuccio isolato

Coppia serraggio consigliata: 0,2Nm

SECONDARIO

Secondario: morsetti M4 con serraggio a dado

Coppia serraggio consigliata: 0,5Nm

Coppia serraggio max.: 0,8Nm

CONNECTIONS

PRIMARY

Passing cable/bus bar primary

Fixing on bar: screws, with insulated caps

Suggested tightening torque: 0,2Nm

SECONDARY

Secondary winding: tightening by nut M4

Suggested tightening torque: 0,5Nm

Suggested tightening max.: 0,8Nm

Siglatura connessioni: primario P1(K) – P2(L)
secondario s1(k) – s2(l)

Connections label: primary winding P1(K) – P2(L)
secondary winding s1(k) – s2(l)

Effettuando più passaggi (spire) del cavo all'interno del trasformatore, è possibile ridurre il valore della corrente primaria, mantenendo inalterati valori di corrente secondaria, prestazioni, classe di precisione.

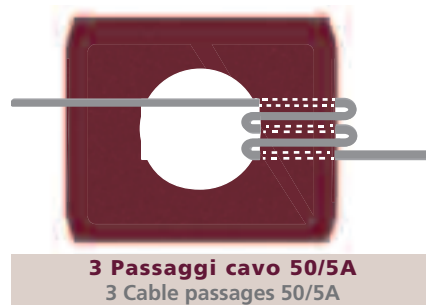
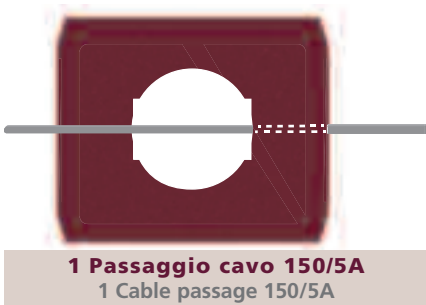
Making more cable passages (windings) inside the transformer, it is possible to reduce the primary current value, keeping unchanged the secondary current values, burden and accuracy class.

Corrente primaria effettiva = Corrente primaria nominale : Nm spire

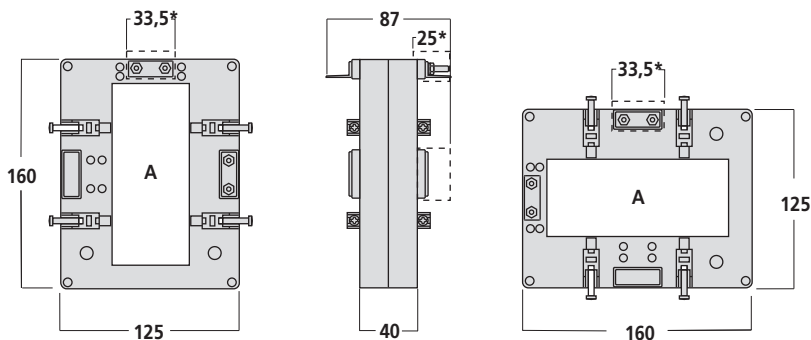
Actual primary current = rated primary current : Nm windings

Es.: trasformatore con rapporto = 150/5A

Ex.: transformer with ratio = 150/5A

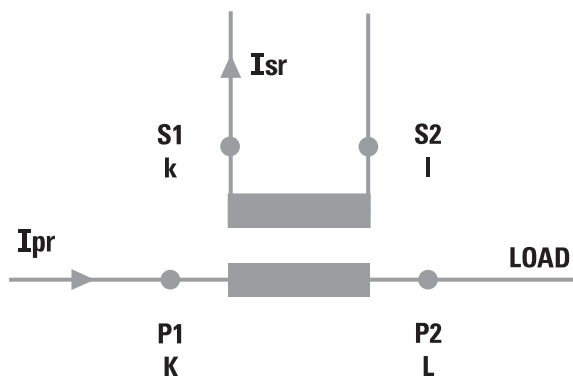
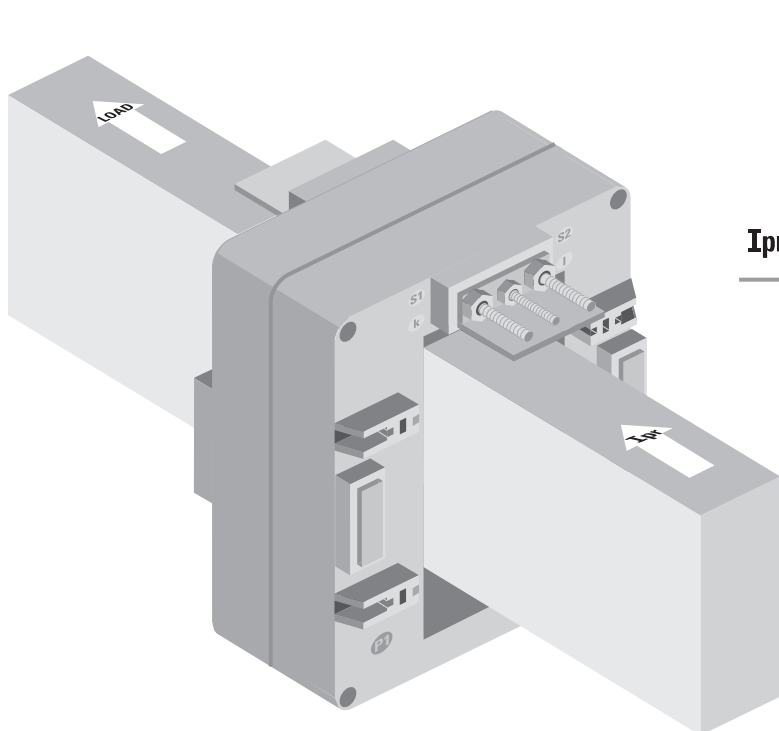


DIMENSIONI DIMENSIONS



*Opzione/Option

SCHEMA D'INSERIONE WIRING DIAGRAM



La I.M.E. S.p.A. si riserva in qualsiasi momento, di modificare le caratteristiche tecniche senza darne preavviso. / I.M.E. S.p.A. reserves the right, to modify the technical characteristics without notice.

NT523 01 - 2017 19° Ed. pag.4/4



www.imeitaly.com



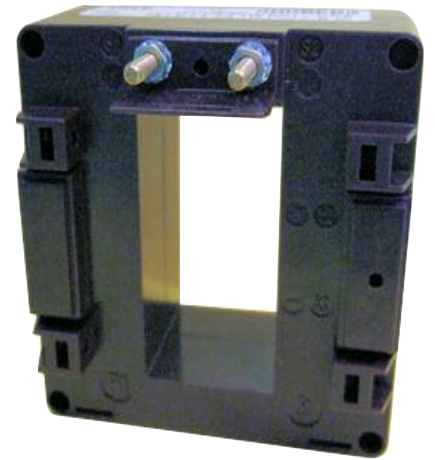
Transformateur de mesure pour réseau basse tension
Mesure

Measuring transformers for low-voltage network
Measure

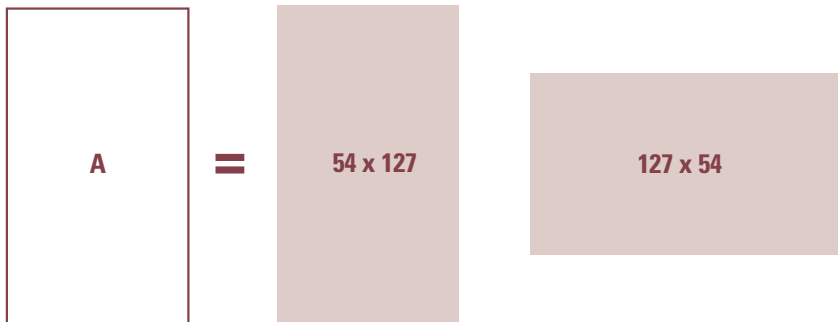
TAS127B

Transformateur de courant monophasé
Primaire à barre passante
Courant primaire 400...4000A
Courant secondaire 1 - 5A
Classe de précision : cl. 0,5 - 1
Prestation nominale 1...50VA

Single-phase current transformer
Passing bus bar primary
Primary current 400...4000A
Secondary current 1 - 5A
Accuracy class: cl.0,5 - 1
Rated burden 1...50VA



OUVERTURE WINDOW



Cache bornes plombable
Sealable terminal cover
(Option)



Fixation sur barre verticale
Fixing on vertical bar



Montage barre à plat
Fixation sur barre horizontale
Terminals on long side
Fixing on horizontal bar

TAS127B				
Fixation sur barre verticale fixing on vertical bar				
REFERENCE / ORDER CODE		Courant primaire Primary current	CL. 0,5	CL. 1
Secondaire / Secondary				
5A	1A	A	VA	VA
3020 9886	3020 9860	400	1	7
3020 9887	3020 9861	500	3	10
3020 9888	3020 9862	600	5	12
3020 9889	3020 9863	700	8	15
3020 9890	3020 9864	750	10	15
3020 9891	3020 9865	800	10	15
3020 9892	3020 9866	1000	12	20
3020 9893	3020 9867	1200	15	25
3020 9894	3020 9868	1250	15	25
3020 9895	3020 9869	1500	20	30
		1600	20	30
3020 9896	3020 9870	2000	25	50
3020 9897	3020 9871	2500	30	50
3020 9898	3020 9872	3000	30	50
		3200	30	50
3020 9899	3020 9873	4000	30	50
3020 0101	Accessoire cache bornes plombable / Accessory sealable terminal cover			

TAS127B				
Montage barre à plat, fixation sur barre horizontale Terminals on long side, fixing on horizontal bar				
REFERENCE / ORDER CODE		Courant primaire Primary current	CL. 0,5	CL. 1
Secondaire / Secondary				
5A	1A	A	VA	VA
		400	1	7
		500	3	10
		600	5	12
		700	8	15
		750	10	15
		800	10	15
		1000	12	20
		1200	15	25
		1250	15	25
		1500	20	30
		1600	20	30
		2000	25	30
		2500	30	50
		3000	30	50
		3200	30	50
		4000	30	50
3020 0101	Accessoire cache bornes plombable / Accessory sealable terminal cover			

NORME DE REFERENCE

EN/IEC 61869-1, 61869-2

CARACTERISTIQUES TECHNIQUES

Courant nominal primaire I_{pr} : 400...4000A

Fréquence nominale: 50Hz

Fréquence de fonctionnement: 47...63Hz

Option: fréquence nominale 400Hz (prestation à préciser)

Courant thermique nominal continu I_{cth} : < 100% I_{pr}

Courant thermique nominal de court-circuit I_{th} : < 60 I_{pr} (max. 90kA)

Courant nominal dynamique I_{dyn} : 2,5 I_{th}

Facteur de sécurité (FS): ≤ 5

Courant nominal secondaire I_{sr} : 5-1A

Prestation nominale: 1...50VA

Classe de précision: 0,5 – 1

REFERENCE STANDARDS

EN/IEC 61869-1, 61869-2

SPECIFICATIONS

Rated primary current I_{pr} : 40...4000A

Rated frequency: 50Hz

Working frequency: 47...63Hz

Option: rated frequency 400Hz (burdens to the advised)

Rated continuous thermal current I_{cth} : < 100% I_{pr}

Rated short-time thermal current I_{th} : < 60 I_{pr} (max. 90kA)

Rated dynamic current I_{dyn} : 2,5 I_{th}

Instrument security factor (FS): ≤ 5

Rated secondary current I_{sr} : 5 - 1A

Rated burden: 1...50VA

Accuracy class: 0,5 – 1

Puissance max. dissipée²: ≤ 23W

²Pour le dimensionnement thermique du coffret

La température max. admissible sur câble à barre primaire est : 125°C

Fonctionnement avec secondaire ouvert 1 minute

Les transformateurs de courant ne doivent pas fonctionner avec l'enroulement secondaire en circuit ouvert en raison du danger potentiel de surtension et la surchauffe qui peut se produire.

Pour remédier à ce problème, il est possible d'utiliser l'accessoire ATAP015 (NT710) pour être directement raccordé à l'enroulement secondaire du transformateur. Cet accessoire est en mesure de détecter en continu la tension aux bornes et, si la tension atteint la valeur seuil (18V) à cause d'une rupture de raccordement ou de déconnexion des dispositifs, l'accessoire referme automatiquement le circuit. Lorsque les conditions de travail normales sont rétablies, il se déconnecte automatiquement. Connecté en permanence avec l'enroulement secondaire du transformateur à protéger, il ne porte pas atteinte aux fonctionnalités ni aux performances du transformateur de courant. Il ne nécessite aucune alimentation externe (auto-alimenté).

CARACTERISTIQUES D'ISOLEMENT

Transformateur sec, isolé dans l'air

Tension maximum pour l'isolement U_m : 0,72kV valeur efficace

Niveau de tension nominale pour l'isolement: 3kV valeur efficace 50Hz/1min

Classe de l'isolement (EN/IEC 61869-1, 61869-2): B

LIMITE DES ERREURS DE COURANT ET DEPLACEMENT DE PHASE (EN/IEC 61869-1, 61869-2)

Classe de précision Accuracy class	Erreur du courant (rapport) en % du courant nominal indiqué ci-dessous Percentage current (ratio) error at percentage of rated current shown below					Déplacement de phase en % du courant nominal ci-dessous Phase displacement at percentage of rated current shown below									
						Minutes					Centiradians				
	5	20	50	100	120	5	20	50	100	120	5	20	50	100	120
0,5	1,5	0,75		0,5	0,5	90	45		30	30	2,7	1,35		0,9	0,9
1	3,0	1,5		1,0	1,0	180	90		60	60	5,4	2,7		1,8	1,8

L'erreur du courant et le déplacement de phase à la fréquence nominale ne doit pas excéder la valeur indiquée dans le tableau lorsque l'enroulement du secondaire représente une valeur de 25% à 100% de la prestation nominale..

CONDITIONS D'UTILISATION

Installation non exposée (EN/IEC 61869-1, 61869-2)

Température de référence: 23°C ± 1°C

Température d'utilisation: -25...50°C ($I_{pr} < 1000A$) - -25...40°C ($I_{pr} > 1000A$)

Température moyenne journalière: ≤ 30°C

Température de stockage: -40...85°C

Humidité relative: ≤ 85%

Adapté pour l'utilisation en climat tropical

BOITIER

Matériau du boîtier: polycarbonate autoextinguible

Indice de protection (EN / IEC 60529): IP40 boîtier, IP00 bornes (IP20 avec cache borne plombable)

Option: cache borne plombable

Poids: 1300 grammes (Max.)

RACCORDEMENT

PRIMAIRE

Primaire barre/câble passant

Fixation sur barre : vis avec capuchon isolant

Couple de serrage conseillé : 0,2Nm

SECONDAIRE

Enroulement secondaire : par cosse, serrage par écrou M4

Couple de serrage conseillé : 0,5Nm

Couple de serrage max. conseillé. : 0,8Nm

Connections label: primary winding P1(K) – P2(L)
secondary winding s1(k) – s2(l)

Max. power dissipation²: ≤ 23W

²For switchboard thermal calculation

The allowed max. cable for busbar temp is : 125°C

Working time guaranteed with secondary winding open for 1 minute

Current transformers should not be operated with the secondary winding open-circuited because of the potentially dangerous over-voltages and overheating which can occur.

To obviate this problem, it is possible to use ATAP015 (NT710) accessory to be directly connected with the transformer secondary winding, which is able to continuously detect the terminal voltage and, if the voltage reaches the threshold value (18V) owing to a connection breakdown or disconnection of the devices, automatically closes again the circuit.

When the normal working conditions are restored, it automatically disconnects. Continuously connected with the secondary winding of the transformer to protect, it doesn't affect at all the current transformer features or performances. It doesn't need any external supply (self-supplied).

INSULATION REQUIREMENTS

Dry transformer, air insulation

Highest voltage for equipment U_m : 0,72kV r.m.s.

Rated insulation level: 3kV r.m.s. 50Hz/1min

Class of insulation (EN/IEC 61869-1, 61869-2): B

LIMITS OF CURRENTS ERROR AND PHASE DISPLACEMENT (EN/IEC 61869-1, 61869-2)

The current error and phase displacement at rated frequency shall not exceed the values given in table when the secondary burden is any value from 25% to 100% of the rated burden.

ENVIRONMENTAL CONDITIONS

Non-exposed installation (EN/IEC 61869-1, 61869-2)

Reference temperature: 23°C ± 1°C

Nominal temperature range: -25...50°C ($I_{pr} < 1000A$) - 25...40°C ($I_{pr} > 1000A$)

Daily mean temperature: ≤ 30°C

Limit temperature range for storage: -40...85°C

Relative humidity: ≤ 85%

Suitable for tropical climates

HOUSING

Housing material: self extinguishing polycarbonate

Protection degree (EN / IEC 60529): IP40 housing, IP00 terminals (IP20 with sealable terminal cover)

Option: sealable terminal cover

Weight: 1300 grams (Max.)

CONNECTIONS

PRIMARY

Passing cable/bus bar primary

Fixing on bar: screws, with insulated caps

Suggested tightening torque: 0,2Nm

SECONDARY

Secondary winding : tightening by nut M4

Suggested tightening torque : 0,5Nm

Suggested tightening max. : 0,8Nm

Connections label: primary winding P1(K) – P2(L)
secondary winding s1(k) – s2(l)

En effectuant plusieurs passage de câble (enroulements) il est possible de réduire la valeur du courant primaire sans modifier les valeurs du courant secondaire, prestations et classe de précision.

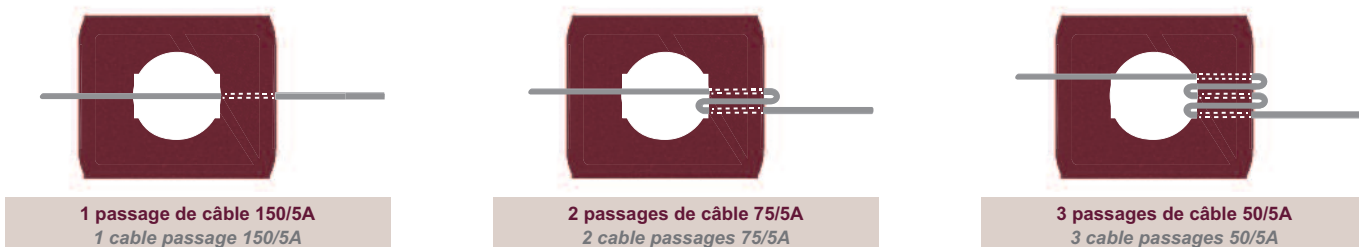
Courant primaire effectif = Courant primaire nominal : Nm enroulements

Ex.: transformateur avec rapport = 150/5A

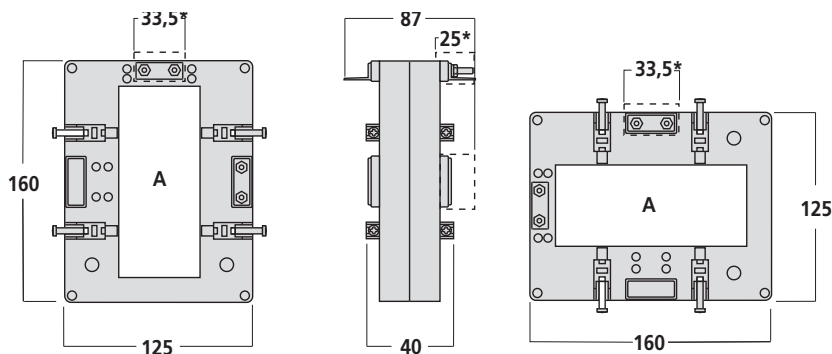
Making more cable passages (windings) inside the transformer, it is possible to reduce the primary current value, keeping unchanged the secondary current values, burden and accuracy class.

Actual primary current = rated primary current : Nm windings

Ex.: transformer with ratio = 150/5A



DIMENSIONS DIMENSIONS



*Option

SCHEMAS DE RACCORDEMENT WIRING DIAGRAM

