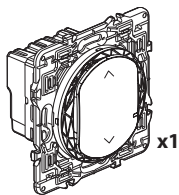


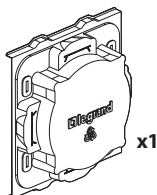
This product is a smart accessory **requiring** to install a starter pack or a gateway «... with Netatmo»

Pack contents



x1

Connected roller shutter switch

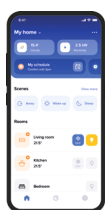


x1

Site protection

Frequency bands: 2.4 - 2.4835 GHz - Power level: < 100 mW

Download the **Home + Control** app and follow the instructions to associate your product



You are now ready to control your installation and can customize your scenarios via the **Home + Control** app or your voice assistant.



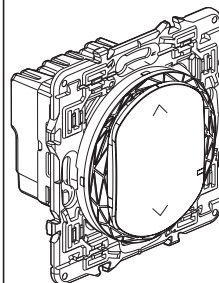
Characteristics

+45° C +5° C		Roller shutter
110-240 VAC 50/60 Hz	1 x 2,5 mm ² 2 x 1,5 mm ²	
240 VAC Max.		1 x 500 VA max
110 VAC Max.		1 x 250 VA max

Before you start

If you plan to install roller shutter switches, read the following precautions:

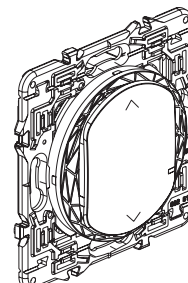
To control a roller shutter switch with two or more wireless switches, only use the products:



x1

Connected roller shutter switch

AND



x1

or several

Roller shutters wireless switch (not included in this pack)

Ensure you have roller shutters wireless switches for each additional control point.

To create a centralised control:

- Use one or more connected roller shutter switches.
- Use a roller shutters wireless switch.

2

1 Mandatory safety precautions



OFF
Switch off the power at the main circuit breaker

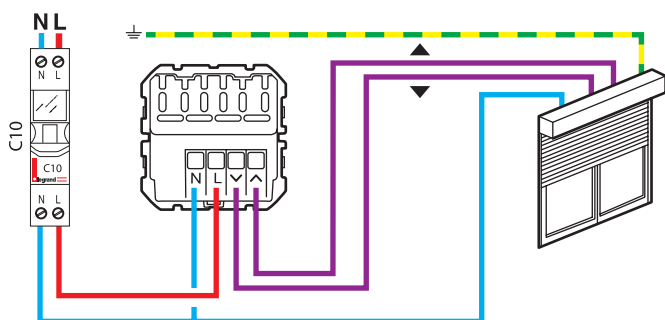


Make sure that the power is off before continuing with the installation.

2 Install the connected switch for roller shutter

1 Wire the connected roller shutter switch

UP/Down/Stop/Level control (available via Home+Control app)



— N (neutral) = blue

— L (live) = any except blue and green/yellow

— (Earth) = green/yellow

The Céliane with Netatmo solution is compatible with roller shutters with a mechanical or electronic stop, controlled by a standard wired roller shutter switch. They are not compatible with motors directly controlled by radio control. To check it, refer to the roller shutter instructions.



It's mandatory to carry out the wiring and installation operations with the power off (risk to break the product)

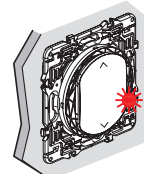
3

3 Installation of the connected shutter switch into the network.



ON
Turn the power back on at the main circuit breaker.

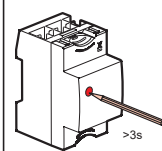
2



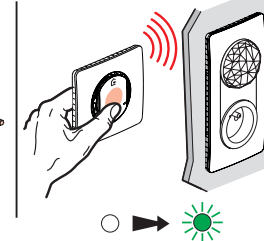
The indicator lights on the connected shutter switch that you have wired turns red.

3 Open the network to add the roller shutter switch. Briefly press the Gateway configuration button.

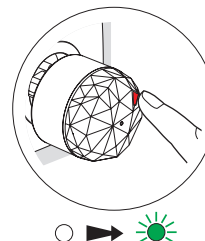
Module Gateway



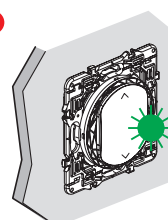
Outlet Gateway



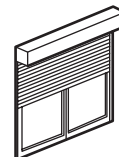
Mobile Gateway



3



The light of the connected shutter switch turns green.

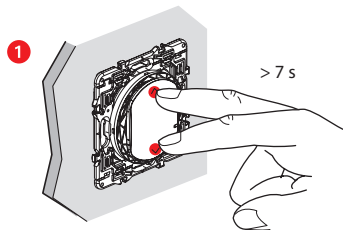


If the roller shutter is closed, it will automatically goes to the position «open»

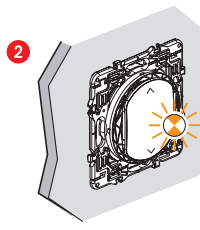
4

4 To automatically calibrate your roller shutter, perform a complete open/close cycle.

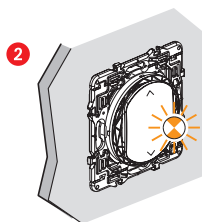
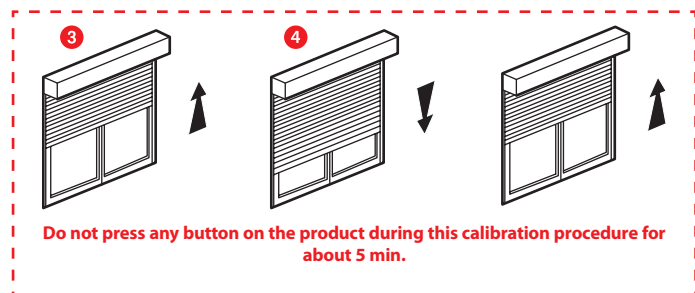
5 In case of need, possibility to launch again a new calibration directly on the product



Simultaneously press the up and down buttons for 7 s.



The light flashes in orange



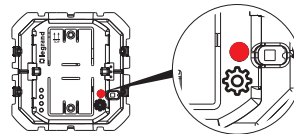
➡ The light stops flashing, the calibration is complete.

5

6 The manual calibration is also possible from the Home+Control app.

Reset process

The reset is done by pressing the «Setup» button for about 7 seconds, accessible by removing the cover. The reset is confirmed by a red flash.



⚠ Safety instructions

This product should be installed in compliance with installation rules, preferably by a qualified electrician. Incorrect installation and/or incorrect use can lead to risk of electric shock or fire. Before carrying out the installation, read the instructions and take account of the product's specific mounting location. Do not open up, dismantle, alter or modify the device except where specifically required to do so by the instructions. All **Legrand** products must be opened and repaired exclusively by personnel trained and approved by **Legrand**. Any unauthorised opening or repair completely cancels all liabilities and the rights to replacement and guarantees. Use only **Legrand** brand accessories.

SIMPLIFIED EU DECLARATION OF CONFORMITY

The undersigned,,

Legrand

declares that the radio-electric equipment referred to in these instructions complies with directive 2014/53/EU. The full text of the EU declaration of conformity is available on the following website :

www.legrand.com/ecatalogue

6



www.legrand.com

LEGRAND - Pro and Consumer Service - BP 30076
87002 LIMOGES CEDEX FRANCE • www.legrand.com

iOS : To control this Apple Home enabled accessory° the latest version of iOS or iPadOS is recommended. Apple : App Store is a service mark of Apple Inc.° registered in the U.S. and other countries. IOS is a trademark or registered trademark of Cisco in the U.S. and other countries and is used under license. Apple Home : Apple Home and iPadOS are trademarks of Apple Inc.° registered in the U.S. and other countries. Apple Home is a trademark of Apple Inc.

Google Play : A recent version of Android with access to Google Play is recommended.

Amazon : Amazon° Alexa and all related logos are trademarks of Amazon.com° Inc. or its affiliates. Android : Android° Google Play° and the Google Play logo are trademarks of Google LLC.™