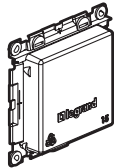
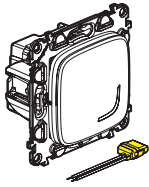


**Connected switch (with dimmer option) without neutral**  
**7 525 84A - 7 526 84A - 7 527 84A - 7 528 84A - 7 529 84A**



This pack is a connected accessory which **requires** you to buy and install the Valena Allure with Netatmo connected starter pack first.

**Pack contents**



Connected switch (with dimmer option) + bleeder

Site protection

Frequency bands: 2.4 - 2.4835 GHz  
 Power level: < 100 mW

**Characteristics**

In default mode (on/off), this switch works with the following types of bulb :

+45°C +5°C			(*) LED		
50/60 Hz	2 x 1,5 mm <sup>2</sup> 1 x 2,5 mm <sup>2</sup>				
240 V~	Max.	125 W	125 VA	125 VA	125 VA
	Min.	5 W	5 VA	5 VA	5 VA
110 V~	Max.	75 W	75 VA	75 VA	75 VA
	Min.	5 W	5 VA	5 VA	5 VA

(\*) or 10 bulbs max. For comfortable lighting, we recommend using bulbs of the same type and manufacturer.

Product NOT COMPATIBLE with ferromagnetic transformer   
 Risk of product breaking



In dimmer option operating mode (which can be activated via the App), this switch functions only with dimmable bulbs (identifiable by the logo on packaging).



LE14521AA

**The bleeder ref 040149 have to be used systematically to :**

-avoid flash ghost effects when the load is OFF.

110-240 V~	50/60 Hz	11 mA max.	-5°C → +55°C

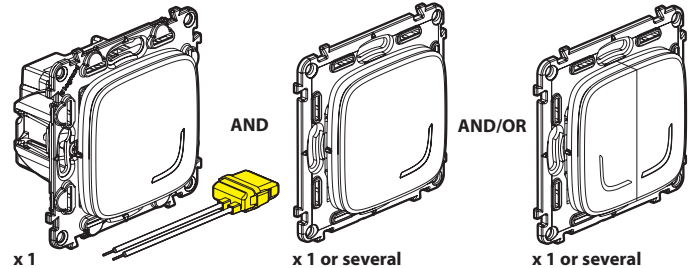


Only one bleeder per circuit

**Before starting : wiring precautions**

If you plan to install two-way light switches or switched power outlets, read the following precautions:

To control a light with two or more switches, only use the products:



x 1 Connected switch without neutral (with dimmer option) + bleeder

x 1 or several Wireless light switches for all other controls (not included in this pack)



**Do not use:** two connected switches (with dimmer option) to control the same lighting point.

1

**Mandatory safety precautions**

1



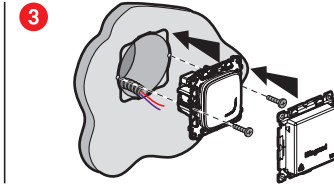
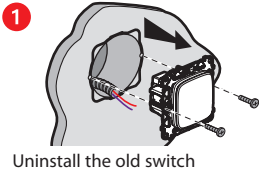
**OFF**  
 OFF Switch off the power at the main circuit breaker

2

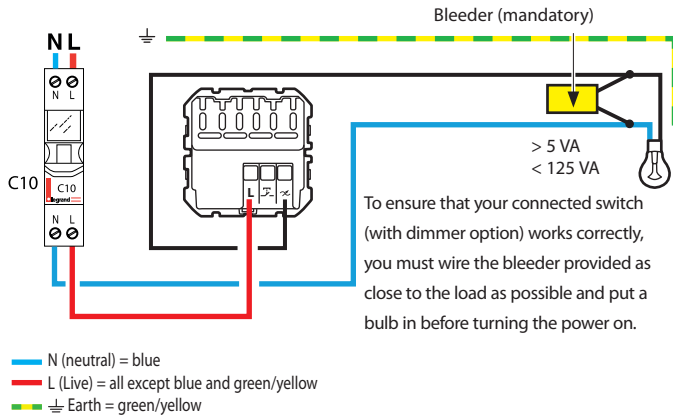


**Make sure that the power is off before continuing with the installation.**

## 2 Install the connected switch (with dimmer option)



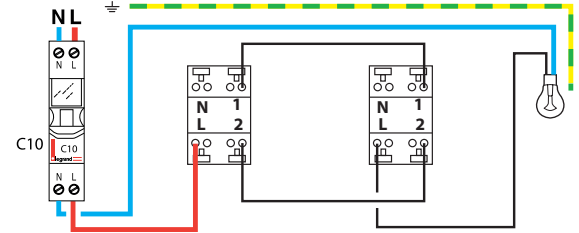
## 2 Wire the connected switch



The connected switch (with dimmer option) works with standard LEDs or dimmable bulbs including LEDs over 5 W. Using dimmable LEDs is mandatory when dimmer mode is activated.



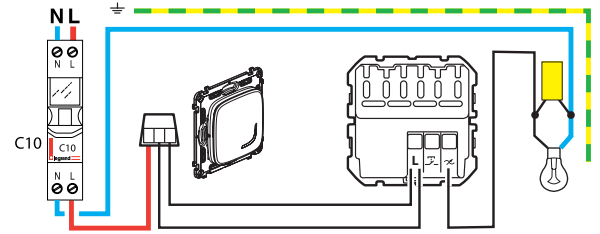
## Existing wiring



## Replacement of an existing 2-way switch by a connected switch + wireless light switch

Previous switch replaced by the wireless light switch

Wireless switch + wired connected switch

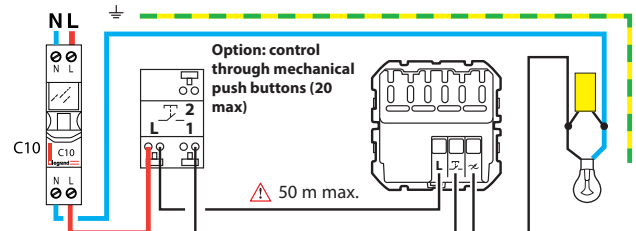


Use a connector to connect all 3 wires together (travellers 1 and 2 and lamp return wire). Use a dedicated connector to insulate the neutral wire (if present)

## Replacement of a 2-way switch by a connected switch + mechanical push-button

Previous switch replaced by the mechanical push button

Mechanical push button + connected wired switch




**To add a connected product to your connected installation, you should follow the instructions:**

- in the **Legrand Home + Control application** (**Settings/Add a new product** section)
- or consult the user manual on **legrand.com**



**www.legrand.com**

LEGRAND - Pro and Consumer Service - BP 30076  
87002 LIMOGES CEDEX FRANCE - [www.legrand.com](http://www.legrand.com)

 **Safety instructions**

This product should be installed in compliance with installation rules, preferably by a qualified electrician. Incorrect installation and/or incorrect use can lead to risk of electric shock or fire. Before carrying out the installation, read the instructions and take account of the product's specific mounting location. Do not open up, dismantle, alter or modify the device except where specifically required to do so by the instructions. All **Legrand** products must be opened and repaired exclusively by personnel trained and approved by **Legrand**. Any unauthorised opening or repair completely cancels all liabilities and the rights to replacement and guarantees. Use only **Legrand** brand accessories.

## SIMPLIFIED **EU** DECLARATION OF CONFORMITY

The undersigned,

***Legrand***

declares that the radio-electric equipment referred to in these instructions complies with directive 2014/53/EU. The full text of the EU declaration of conformity is available on the following website :

***www.legrandoc.com***