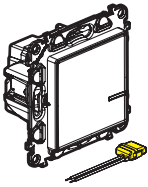


Connected switch (with dimmer option) without neutral
7 521 84A - 7 522 84A - 7 523 84A - 7 563 84A

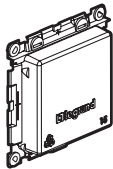


This pack is a connected accessory which **requires** you to buy and install the Valena Life with Netatmo connected starter pack first.

Pack contents



Connected switch (with dimmer option) + bleeder



Site protection

Frequency bands: 2.4 - 2.4835 GHz
 Power level: < 100 mW

Characteristics

In default mode (on/off), this switch works with the following types of bulb :

+45°C +5°C			(*) LED	
50/60 Hz	2 x 1,5 mm ² 1 x 2,5 mm ²			
240 V~	Max.	125 W	125 VA	125 VA
	Min.	5 W	5 VA	5 VA
110 V~	Max.	75 W	75 VA	75 VA
	Min.	5 W	5 VA	5 VA

(*) or 10 bulbs max. For comfortable lighting, we recommend using bulbs of the same type and manufacturer.

Product **NOT COMPATIBLE** with ferromagnetic transformer
 Risk of product breaking

In dimmer option operating mode (which can be activated via the App), this switch functions only with dimmable bulbs (identifiable by the logo on packaging).

LE14520AA

The bleeder ref 040149 have to be used systematically to :

-avoid flash ghost effects when the load is OFF.

110-240 V~	50/60 Hz	11 mA max.	-5°C → +55°C

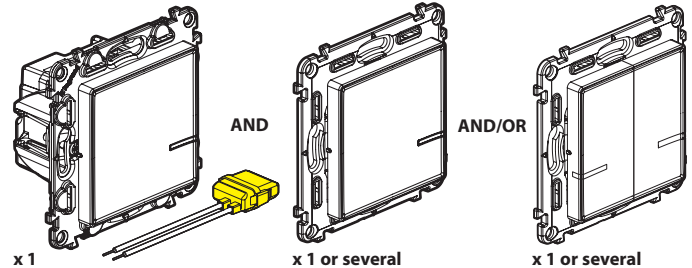


Only one bleeder per circuit

Before starting : wiring precautions

If you plan to install two-way light switches or switched power outlets, read the following precautions:

To control a light with two or more switches, only use the products:



x 1 Connected switch without neutral (with dimmer option) + bleeder

x 1 or several Wireless light switches for all other controls (not included in this pack)

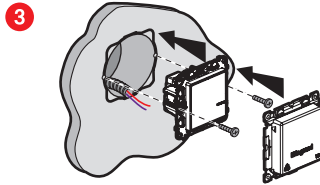
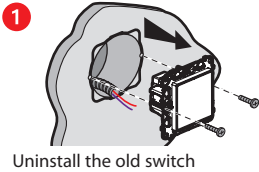
Do not use: two connected switches (with dimmer option) to control the same lighting point.

1 Mandatory safety precautions

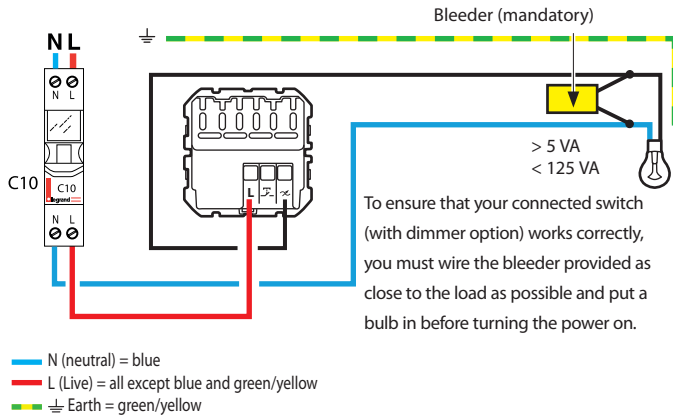
1 **OFF**
 OFF Switch off the power at the main circuit breaker

2 **Make sure that the power is off before continuing with the installation.**

2 Install the connected switch (with dimmer option)



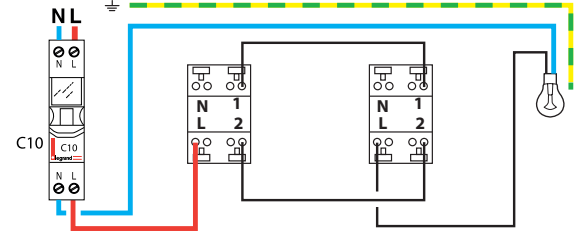
2 Wire the connected switch



The connected switch (with dimmer option) works with standard bulbs or dimmable bulbs including LEDs over 5 W. Using dimmable LEDs is mandatory when dimmer mode is activated.



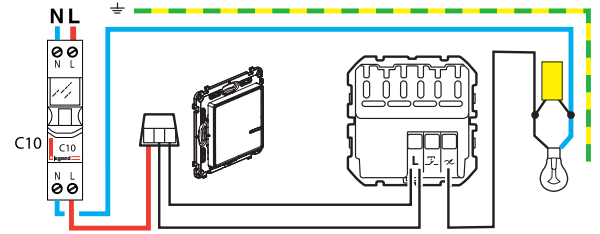
Existing wiring



Replacement of an existing 2-way switch by a connected switch + wireless light switch

Previous switch replaced by the wireless light switch

Wireless switch + wired connected switch

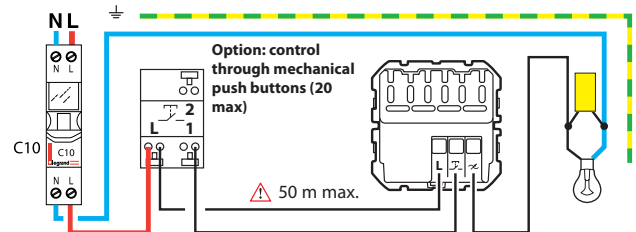


Use a connector to connect all 3 wires together (travellers 1 and 2 and lamp return wire). Use a dedicated connector to insulate the neutral wire (if present)

Replacement of a 2-way switch by a connected switch + mechanical push-button

Previous switch replaced by the mechanical push button

Mechanical push button + connected wired switch




To add a connected product to your connected installation, you should follow the instructions:

- in the **Legrand Home + Control application** (Settings/Add a new product section)
- or consult the user manual on legrand.com



www.legrand.com

LEGRAND - Pro and Consumer Service - BP 30076
87002 LIMOGES CEDEX FRANCE - www.legrand.com

 Safety instructions

This product should be installed in compliance with installation rules, preferably by a qualified electrician. Incorrect installation and/or incorrect use can lead to risk of electric shock or fire. Before carrying out the installation, read the instructions and take account of the product's specific mounting location. Do not open up, dismantle, alter or modify the device except where specifically required to do so by the instructions. All **Legrand** products must be opened and repaired exclusively by personnel trained and approved by **Legrand**. Any unauthorised opening or repair completely cancels all liabilities and the rights to replacement and guarantees. Use only **Legrand** brand accessories.

SIMPLIFIED **EU** DECLARATION OF CONFORMITY

The undersigned,

Legrand

declares that the radio-electric equipment referred to in these instructions complies with directive 2014/53/EU. The full text of the EU declaration of conformity is available on the following website :

www.legrandoc.com