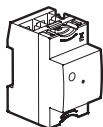
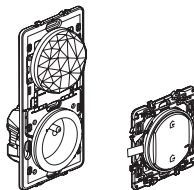


Requires a starter pack or a gateway «with Netatmo»



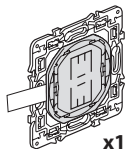
Module Control

or



Control Socket and Home/Away general command

Content:



x1

Wireless Color Ambiance Switch



x1

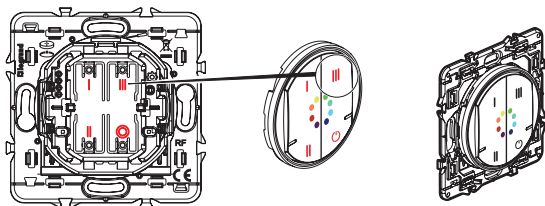
Color Ambiance Switch Cover



Removable sticker

Frequency bands: 2.4 - 2.4835 GHz
Power level: < 100 mW

Mounting the cover



Install the Wireless Color Ambiance Switch

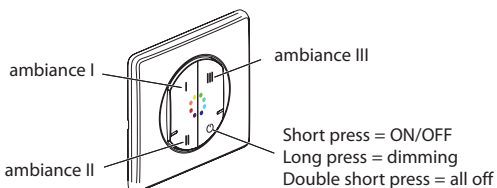
To associate the command with your connected installation, it is recommended to follow the instructions in the **Legrand Home + Control** application



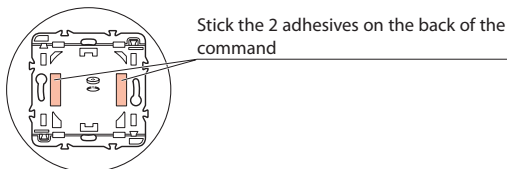
www.legrand.com/reference/741265

LEGRAND - Pro and Consumer Service - BP 30076
87002 LIMOGES CEDEX FRANCE • www.legrand.com

Wireless command operation

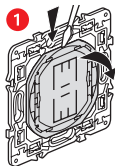


Use the double-sided stickers to place the wireless command on a wall.

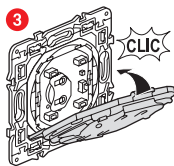
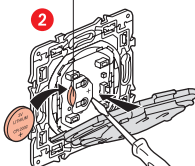


Before sticking the wireless command on the wall,
please check sticking on a non-visible part of the
wall.

Battery replacement



Lithium
battery
CR 2032
3 V



Control your Zigbee 3.0 lighting

The Wireless Color Ambiance Switch allows the control of Zigbee 3.0 lighting (such as bulbs, spotlights, LED strips, etc.) from all brands (Ledvance Smart + Zigbee, Philips Hue, and many more). To check your light is Zigbee 3.0 certified, look for the logo on the packaging or in the manual. You can also check the certified products list here: <https://csa-iot.org>

If you already have a Zigbee 3.0 certified product associated to another bridge/gateway, you need first to reset the light. Refer to the product manual to know the reset procedure.

Safety instructions

This product should be installed in compliance with installation rules, preferably by a qualified electrician. Incorrect installation and/or incorrect use can lead to risk of electric shock or fire. Before carrying out the installation, read the instructions and take account of the product's specific mounting location. Do not open up, dismantle, alter or modify the device except where specifically required to do so by the instructions. All **Legrand** products must be opened and repaired exclusively by personnel trained and approved by **Legrand**. Any unauthorised opening or repair completely cancels all liabilities and the rights to replacement and guarantees. Use only **Legrand** brand accessories.

SIMPLIFIED EU DECLARATION OF CONFORMITY

The undersigned, **Legrand**

declares that the radio-electric equipment referred to in these instructions complies with directive 2014/53/EU. The full text of the EU declaration of conformity is available on the following website :

www.legrand.com/ecatalogue