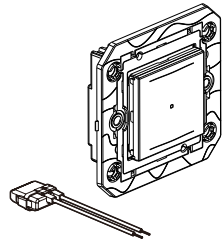


This product is a connected accessory which **requires** you to buy and install the Arteor with Netatmo connected starter pack first.

**Pack contents**



Connected switch + bleeder

<b>0 401 49</b> Bleeder 		110-240V~
		50/60 Hz
		0.4 W
		+5°C → +35°C

**Characteristics**

 +35°C +5°C 110-240V~ 50/60Hz	 8 mm 1.5...4mm <sup>2</sup>					
240V	Max.	600W	300VA	300VA	300VA	(*)300VA
	Min.	15W	15VA	15VA	15VA	15VA
110V	Max.	300W	150VA	150VA	150VA	(*)150VA
	Min.	15W	15VA	15VA	15VA	15VA

(\*) Or 10 lamps max. For comfortable lighting, we recommend using bulbs of the same type and brand.

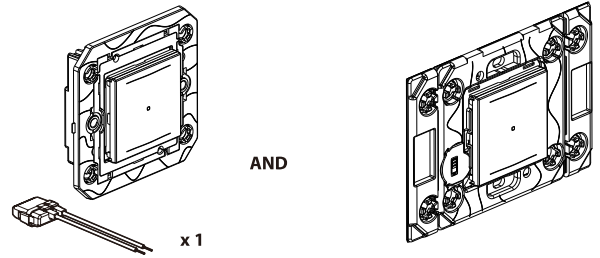
(\*\*) Use only with transformers designed to function with electronic switches. Take account of transformer losses when calculating power. Transformers must be loaded at more than 60% of their power.

LE13221AA

**Before you start: wiring precautions**

If you plan to install two-way light switches, read the following precautions:

To control a light **with two or more switches**, only use the products:



Connected switch

Wireless controls for all control points (not included in this pack)

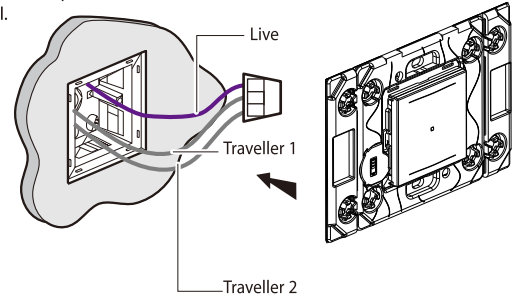
or several

**Do not use:** two connected switches to control the same lighting point.

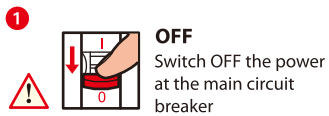
**Tip if replacing a two-way switch:**

old flush-mounted switch replaced by the wireless control.

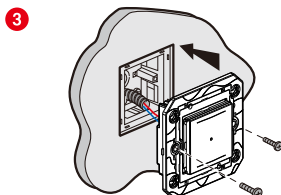
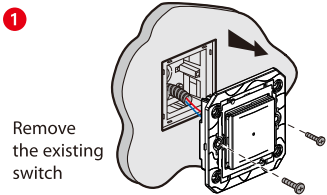
Use a **connector** to connect live wire and traveller wires 1 and 2.



**1 Necessary safety precautions**



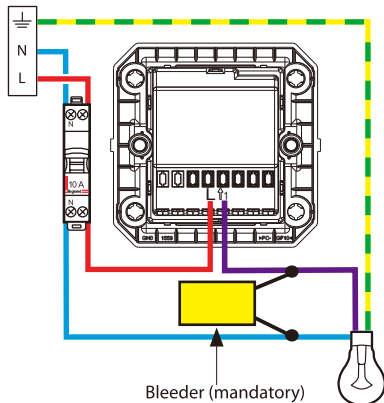
**2 Install the connected switch**



**2 Wire the connected switch**

To ensure that your connected switch works correctly, you **must** wire **the bleeder** provided as close to the load as possible and put **a bulb** in before turning the power on.

- N (neutral) = blue
- L (live) = any except blue and green/yellow
- $\perp$  (earth) = green/yellow



110V:  $\geq 15W$   
 $\leq 300W$   
 Frequency bands: 2.4 - 2.4835 GHz  
 Power level: < 100 mW  
 240V:  $\geq 15W$   
 $\leq 600W$

**3 To add a connected product to your connected installation, you should follow the instructions:**

- in the **user guide in your connected starter pack**
- in the **Legrand Home + Control application (Settings/Add a new product section)**
- or consult the user manual on **legrand.com**



[www.legrand.com/reference/574617](http://www.legrand.com/reference/574617)

LEGRAND - Pro and Consumer Service - BP 30076  
 87002 LIMOGES CEDEX FRANCE • [www.legrand.com](http://www.legrand.com)

**Safety instructions**

This product should be installed in compliance with installation rules, preferably by a qualified electrician. Incorrect installation and/or incorrect use can lead to risk of electric shock or fire.

Before carrying out the installation, read the instructions and take account of the product's specific mounting location.

Do not open up, dismantle, alter or modify the device except where specifically required to do so by the instructions. All Legrand products must be opened and repaired exclusively by personnel trained and approved by Legrand. Any unauthorised opening or repair completely cancels all liabilities and the rights to replacement and guarantees. Use only Legrand brand accessories.

**SIMPLIFIED EU DECLARATION OF CONFORMITY**

The undersigned,  
**Legrand**

declares that the radio-electric equipment referred to in these instructions complies with directive 2014/53/EU.

The full text of the EU declaration of conformity is available on the following website:

[www.legrandoc.com](http://www.legrandoc.com)

