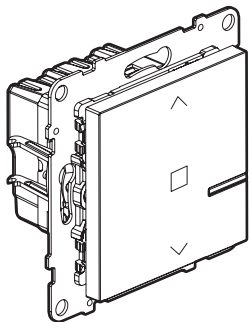


**Connected roller shutter switch**  
**7 221 78 - 7 222 78 - 7 223 78 - 7 224 78**



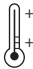


This pack is a connected accessory which **requires** you to buy and install the Suno with Netatmo connected starter pack first.

**Pack contents**



Connected roller shutter switch

**Characteristics**

 +45°C +5°C 110-240 VAC 50/60 Hz	 1 x 1,5 mm <sup>2</sup> 1 x 2,5 mm <sup>2</sup> 2 x 1,5 mm <sup>2</sup>	 ①
240 VAC max.		1 x 500 VA
110 VAC max.		1 x 270 VA

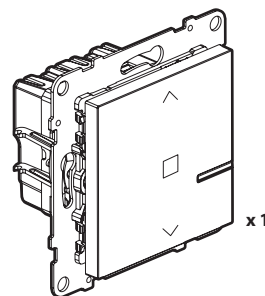
① Roller shutter engine

LE13176AB

**Before you start**

If you plan to install roller shutter switches, read the following precautions:

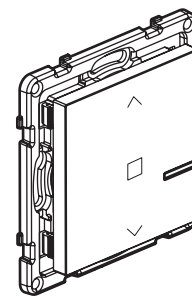
**To control a roller shutter switch with two or more wireless switches, only use the products:**



x 1

Connected roller shutter switch

AND



x 1  
or several

Roller shutters wireless switch  
(not included in this pack)

Ensure you have roller shutters wireless switches for each additional control point.

**To create a centralised control:**

- Use one or more connected roller shutter switches.
- Use a roller shutters wireless switch.

**1 Mandatory safety precautions**

1



OFF

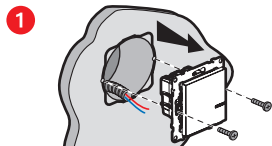
Switch off the power at the main circuit breaker

2

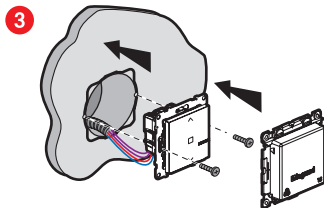


**Make sure that the power is off before continuing with the installation.**

## 2 Install the connected switch for roller shutter

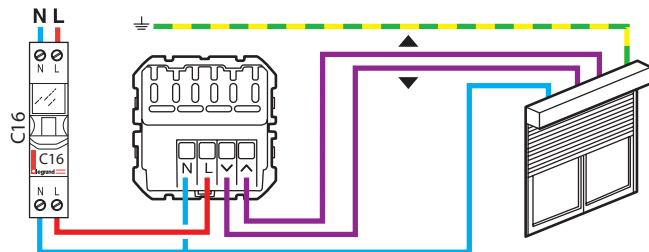


Remove the existing switch



## 2 Wire the connected roller shutter switch

UP/Down/Stop/Level control (available via Home+Control app)



The Suno with Netatmo solution is compatible with roller shutters with a mechanical or electronic stop, controlled by a standard wired roller shutter switch. They are not compatible with motors directly controlled by radio control. To check it, refer to the roller shutter instructions.

It's mandatory to carry out the wiring and installation operations with the power off (risk to break the product)

Frequency bands: 2.4 - 2.4835 GHz  
Power level: < 100 mW

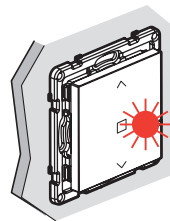
— N (neutral) = blue  
— L (live) = any except blue and green/  
yellow  
— Earth = green/yellow

## 3 Installation of the connected shutter switch into the Zigbee radio network



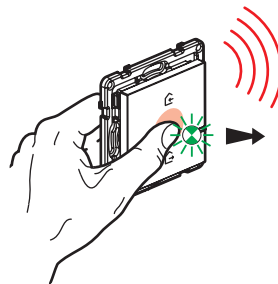
Turn the power back on at the main circuit breaker.

## 2



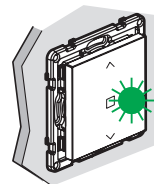
The indicator lights on the connected shutter switch that you have wired turns red.

## 3

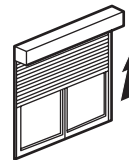


Press the middle of the Home/Away wireless switch until its light turns green, and then stop pressing.

## 4



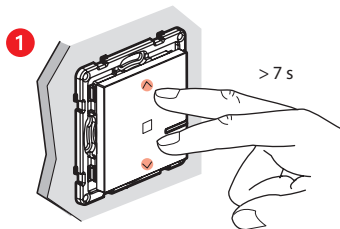
The light of the connected shutter switch turns green.



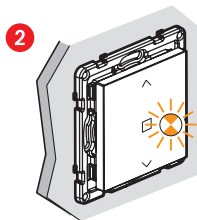
If the roller shutter is closed, it will automatically go to the position «open»

- ④ To automatically calibrate your roller shutter, perform a complete open/close cycle.

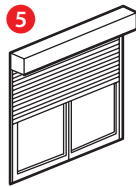
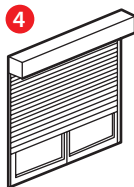
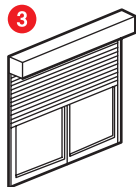
- ⑤ In case of need, possibility to launch again a new calibration directly on the product



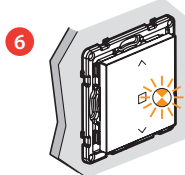
Simultaneously press the up and down buttons for 7 s.



The light flashes in orange



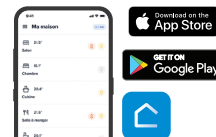
Do not press any button on the product during this calibration procedure for about 5 min.



→ The light stops flashing, the calibration is complete.

- ⑥ The manual calibration is also possible from the Home+Control app.

Download Home + Control App et follow instructions



To add this connected roller shutters switch with your connected installation, you should follow the instructions:

- in the **Legrand Home + Control** application (Settings/Add a new product section)

- or consult the user manual on **legrand.com**



**www.legrand.com**

LEGRAND - Pro and Consumer Service - BP 30076  
87002 LIMOGES CEDEX FRANCE • **www.legrand.com**

#### ⚠ Safety instructions

This product should be installed in compliance with installation rules, preferably by a qualified electrician. Incorrect installation and/or incorrect use can lead to risk of electric shock or fire. Before carrying out the installation, read the instructions and take account of the product's specific mounting location. Do not open up, dismantle, alter or modify the device except where specifically required to do so by the instructions. All **Legrand** products must be opened and repaired exclusively by personnel trained and approved by **Legrand**. Any unauthorised opening or repair completely cancels all liabilities and the rights to replacement and guarantees. Use only **Legrand** brand accessories.

## SIMPLIFIED EU DECLARATION OF CONFORMITY

The undersigned,

**Legrand**

declares that the radio-electric equipment referred to in these instructions complies with directive 2014/53/EU. The full text of the EU declaration of conformity is available on the following website :

**www.legrand.com/ecatalogue**