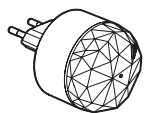


Smart lighting «with Netatmo» starter pack 1 993 06/07/08/09

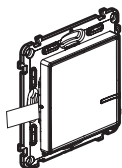
This pack allows you to start a wireless smart installation in your home to control your lighting and electrical devices remotely.

legrand®
SIMPLY
CONNECTED

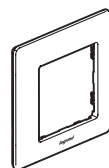
> Pack composition :



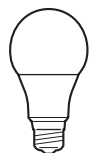
Plug & Play Gateway
Frequency band: 2.4 to 2.4835 GHz
Power level: < 100 mW



Wireless lighting switch



Cover plate



LEDVANCE SMART* smart bulb Dimmable Zigbee 3.0

Repositionable adhesives
tapes



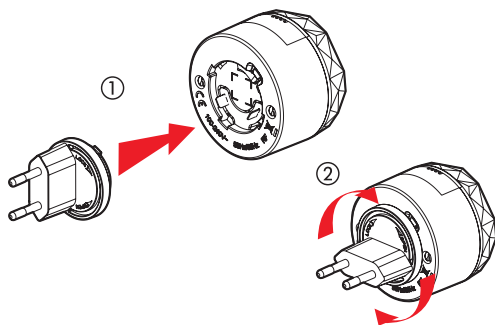
Sticker for
existing switch



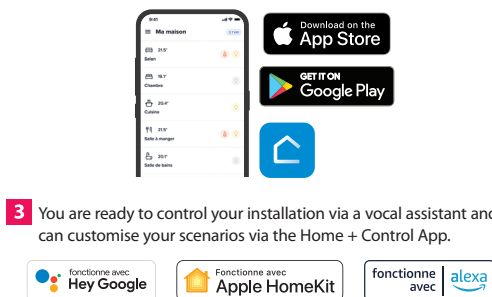
Terminal block
for existing switch ref 0 343 23

> Installation steps

1 Plug into an existing standard socket easily accessible protected by a maximum 16A circuit breaker.



2 Download the Home + Control App and follow the instructions to associate the wireless switch and the LEDVANCE SMART* Dimmable Zigbee 3.0 smart bulb.

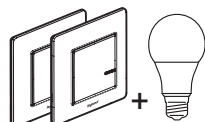


3 You are ready to control your installation via a vocal assistant and can customise your scenarios via the Home + Control App.

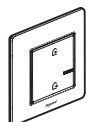


> Complete your installation :

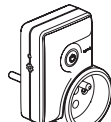
Your Legrand connected installation is scalable. You can easily add all Legrand connected solutions (to be found on legrand.com), Netatmo products or even Zigbee 3.0 certified lighting products from other brands. And so, customise your scenarios and schedules via the Home + Control App.



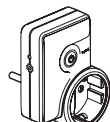
1 993 20/21/22/23
Extension pack



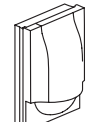
752 186/286/386 - 756 393
Wireless lighting control



0 648 87
Mobile socket



0 648 40
Mobile socket



0 648 75
Motion detector

Apple HomeKit : When you install the iOS mobile application, you will be asked for this code

⚠ **Unique Apple HomeKit installation code to be kept** LE13090AA

> What happens with your existing switch?

Once the installation is complete, you control the smart bulb with your wireless lighting control, with the Home + Control App or via a voice assistant. You can then override your existing switch, using solutions **A** or **B**.

A With the sticker supplied in the pack

You need to keep your bulb powered. Place your sticker on the switch to keep it in the «ON» position.



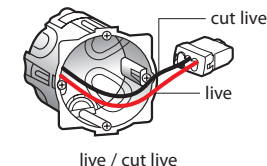
B With the terminal block supplied in the pack

- Turn off the power and check that there is no voltage by operating the switch.
- Remove your existing switch completely (from the flush-mounted box) with a screwdriver.
- Use the terminal block provided to connect the 2 or 3 wires wired to the switch to be replaced together.

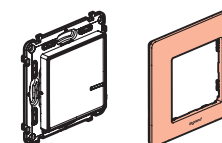
These wires can be of various colours (red, black, orange, brown or purple). If a blue (neutral) wire is present, connect it to another terminal block.

If a blue (neutral) wire is present, connect it to another terminal block separately.

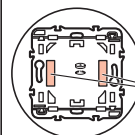
- Push the connected wires back to the connection terminal at the bottom of the back box. Secure the wireless lighting control with the the screws of the back box. Clip on the cover plate.



live / cut live



> Placement of adhesives in case you want to position your wireless control directly on the wall.



Stick the 2 repositionable adhesives
on the back of the wireless control



Before attaching the wireless lighting control using the repositionable adhesives provided, test the bonding on a on-visible area of the wall.

About zigbee 3.0

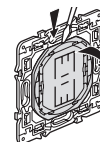
Zigbee is a communication protocol that allows connected products (lighting, lighting controls, plugs, roller shutter control...) certified Zigbee 3.0 to communicate and work together. To check if a light is Zigbee 3.0 certified and therefore compatible with your «with Netatmo» connected starter pack

look for the logo on the packaging or on the product's manual. You can also consult the list of all Zigbee 3.0 certified products at the following address:
https://zigbeealliance.org/product_type/certified_product/

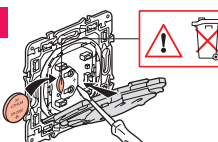
If you already have Zigbee 3.0 certified products that have their own connection bridge, consider resetting them to be able to use them with your «with Netatmo» connected starter pack. Refer to your products' manuals for the reset procedure

> Replacing the battery in a wireless lighting control

1

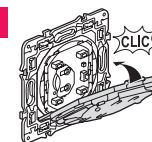


2



Lithium battery
CR 2032
3 V

3



www.legrand.com

LEGRAND - Pro and Consumer Service - BP 30076
87002 LIMOGES CEDEX FRANCE • www.legrand.com

SIMPLIFIED EU DECLARATION OF CONFORMITY

The undersigned, **Legrand**
declares that the radio equipment referred to in this notice complies with
Directive 2014/52/EU

LE13090AA