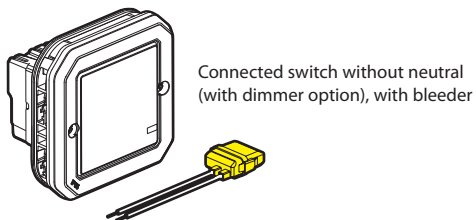


This pack is a connected accessory which **requires** you to buy and install a «with Netatmo» connected starter pack first..

PACK CONTENTS



CHARACTERISTICS

In factory mode (on/off), this switch works with the following types of bulbs :

Temperature +45°C -5°C	Terminal size 2 x 1,5 mm ² 2 x 2,5 mm ²	Incandescent bulb	(*) LED	Dimmable bulb
			LED symbol	
50/60 Hz		Light bulb icon	LED symbol	Dimmable bulb icon
240 V~	Max.	125 W	125 VA	125 VA
	Min.	5 W	5 VA	5 VA
110 V~	Max.	75 W	75 VA	75 VA
	Min.	5 W	5 VA	5 VA

(*) or 10 bulbs max. For comfortable lighting, we recommend using bulbs of the same type and make.

Product **NOT COMPATIBLE** with ferromagnetic transformer. Risk of product breaking



In dimmer option operating mode (which can be activated via the App), this switch functions only with dimmable (identifiable by the logo on packaging).



LE12815AA

The bleeder ref 040149 have to be used systematically to :
 -avoid flash ghost effects when the load is OFF.

110- 240 V~	50 - 60 Hz	11 mA max.	-5° C → +55° C

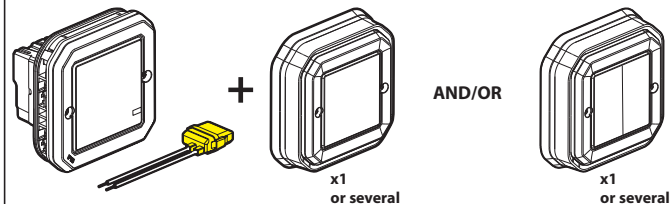


Only one bleeder per circuit

Before starting : wiring precautions

If you plan to install two-way light switches or switched power outlets, read the following precautions:

To control a light with two or more switches, only use the products:



Connected switch without neutral (with dimmer option) + bleeder

Wireless light switches for all other controls (not included in this pack)



Do not use: two connected switches (with dimmer option) to control the same lighting point.

1 Mandatory safety precautions



1 OFF
Switch off the power at the main circuit breaker

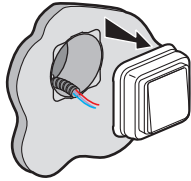
2



Make sure that the power is off before continuing with the installation.

2 Install the connected switch (with dimmer option)

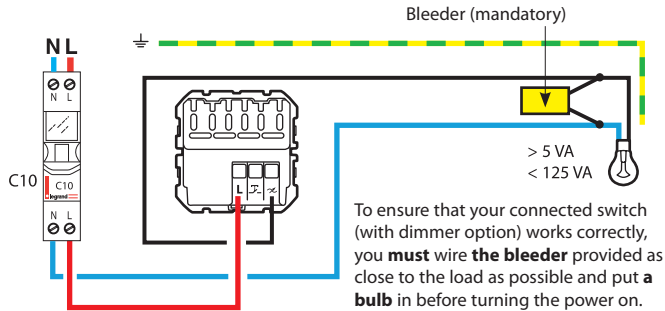
1



Uninstall the old switch

2

Wire the connected switch

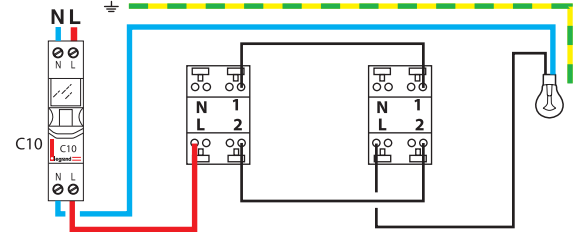


- N (neutral) = blue
- L (Live) = all except blue and green/yellow
- Earth = green/yellow



The connected switch (with dimmer option) works with standard bulbs or dimmable bulbs including LEDs over 5 W. Using dimmable LEDs is mandatory when dimmer mode is activated.

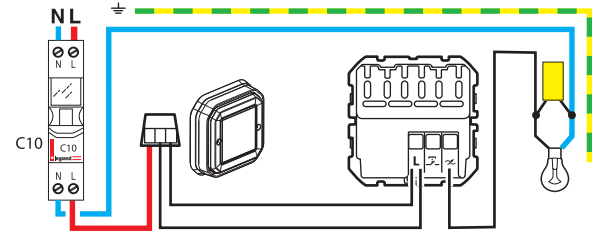
Existing wiring



Replacement of an existing 2-way switch by a connected switch + wireless light switch

Previous switch replaced by the wireless light switch

Wireless switch + wired connected switch

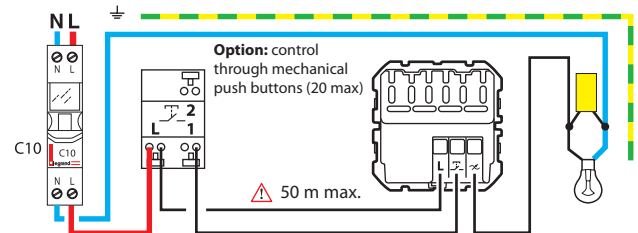


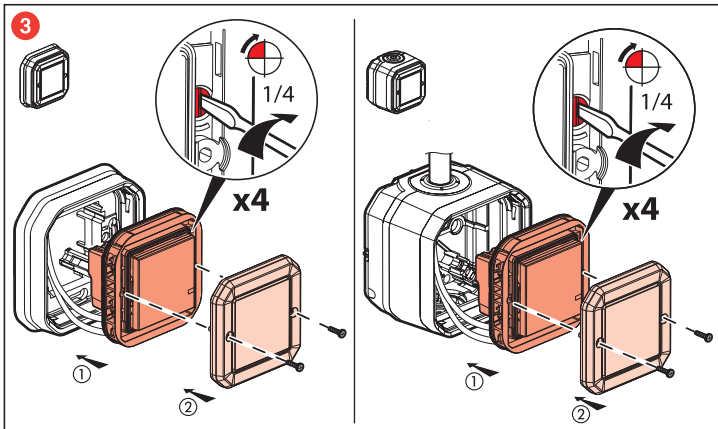
Use a connector to connect all 3 wires together (travellers 1 and 2 and lamp return wire). Use a dedicated connector to insulate the neutral wire (if present)

Replacement of a 2-way switch by a connected switch + mechanical push-button.

Previous switch replaced by the mechanical push button

Mechanical push button + connected wired switch





⚠ Safety instructions

This product should be installed in compliance with installation rules, preferably by a qualified electrician. Incorrect installation and/or incorrect use can lead to risk of electric shock or fire. Before carrying out the installation, read the instructions and take account of the product's specific mounting location. Do not open up, dismantle, alter or modify the device except where specifically required to do so by the instructions. All **Legrand** products must be opened and repaired exclusively by personnel trained and approved by **Legrand**. Any unauthorised opening or repair completely cancels all liabilities and the rights to replacement and guarantees. Use only **Legrand** brand accessories.

3 To add a connected product to your connected installation, you should follow the instructions:

- in the **Legrand Home + Control application (Settings/Add a new product section)**
- or consult the user manual on **legrand.com**



www.legrand.com

LEGRAND - Pro and Consumer Service - BP 30076
87002 LIMOGES CEDEX FRANCE • www.legrand.com

SIMPLIFIED EU DECLARATION OF CONFORMITY

The undersigned,,

Legrand

declares that the radio-electric equipment referred to in these instructions complies with directive 2014/53/EU. The full text of the EU declaration of conformity is available on the following website :

www.legrandoc.com