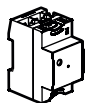


Requires the installation of a:

Gateway module



/
OR
/

Any kind of
"with Netatmo"
gateway

Load shedding function compatible with :

Socket outlet, cable outlet, connected contactors and dry contacts
from « ... with Netatmo » range



Socket outlet



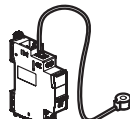
Cable outlet



Mobile socket outlet



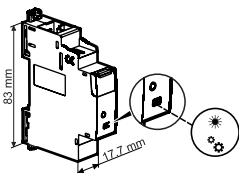
Connected contactor



Connected dry contact

N.B. The installation of at least one of these products is necessary to the operating of the smart load shedder.

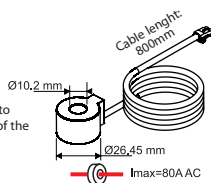
Composition



Smart load shedder



Pay attention to
the direction of the
current



Measure coil

Accuracy	Shedding
$+5^{\circ}\text{C}$ $+45^{\circ}\text{C}$	100-240V~ 50/60Hz
80A MAX	2,4-2,4835Ghz <100 mW
$\pm 1\%$ under 63A	

CE Directive
Compliant with the following European directive:

Low voltage directive
(LVD) 2014/35/UE

Electromagnetic compatibility
(CEM) n° 2014/30/UE

Safety instructions

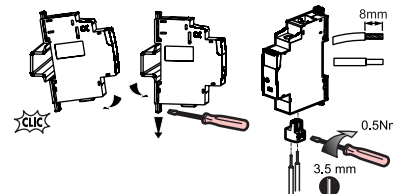
This product should be installed in compliance with installation rules, preferably by a qualified electrician. Incorrect installation and/or incorrect use can lead to risk of electric shock or fire. Before carrying out the installation, read the instructions and take account of the product's specific mounting location. Do not open up, dismantle, alter or modify the device except where specifically required to do so by the instructions. All **Legrand** products must be opened and repaired exclusively by personnel trained and approved by **Legrand**. Any unauthorised opening or repair completely cancels all liabilities and the rights to replacement and guarantees. Use only **Legrand** brand accessories.



1 Preparation, connection

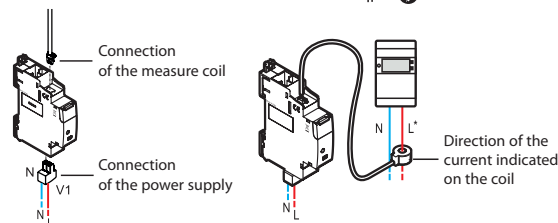


Turn off the power
at general
circuit breaker

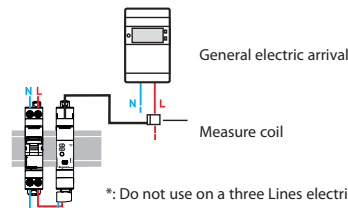


V1, N:
MAX
2x 1.5mm²
1.5mm²

Wiring



A circuit breaker with rated current C2 to C16 is necessary depending on wire section used for supplying the smart load shedder. If conditions allow, the existing electrical protections in the electrical panel can be reused for this purpose.



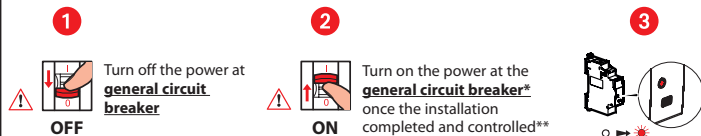
*: Do not use on a three Lines electrical installation.

If the product is not wired on the phase it is tracking consumption from, the product will flash in orange.

— N (neutral) = blue

— L (Line) = Everything but blue and green/yellow

2 Add the **Smart load shedder** in a connected installation



* In order to restart all connected products at the same time.

** After wiring the installation, refit the front plate so that no active live part is accessible.

3 Finalize the installation in the Legrand Home + Control app

Download the Home + Control App and follow the instructions for adding the connected product in your setup.



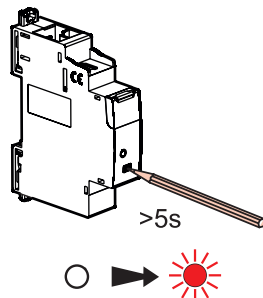
You also have the option of controlling your installation via a voice assistant and can customize your scenarios via the Home + Control App.



**Reset a Smart load shedder
to remove it from a connected installation**

Press the configuration button of the Smart load shedder (> 5 seconds) until the configuration indicator lights up in fixed red.

It is no longer associated with the Gateway present in the installation.



www.legrand.com/ecatalogue/

LEGRAND - Pro and Consumer Service - BP 30076
87002 LIMOGES CEDEX FRANCE • www.legrand.com

UE SIMPLIFIED DECLARATION OF CONFORMITY

The undersigned,

Legrand

declares that the radio equipment listed on this instruction sheet are compliant to the directive 2014/53/UE.

The full text of the UE declaration of conformity is available at the following website:

www.legrand.com/ecatalogue