 **Safety instructions**

GB CA IN IE US SG

This product should be installed in compliance with installation rules, preferably by a qualified electrician.



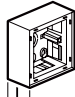
Before carrying out the installation, read the instructions and take account of the product's specific mounting location.

Do not open up, dismantle, alter or modify the device except where specifically required to do so by the instructions.

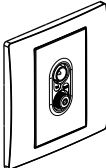
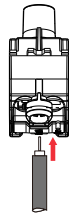
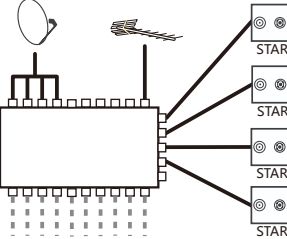
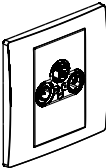
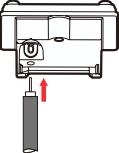
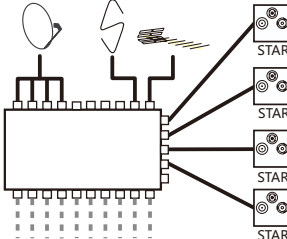
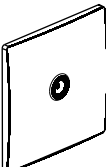
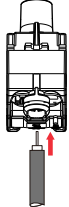
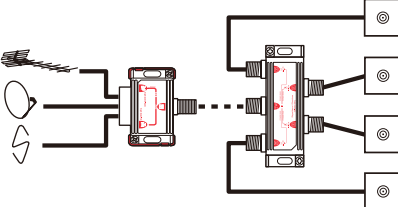
All Legrand products must be opened and repaired exclusively by personnel trained and approved by Legrand. Any unauthorised opening or repair completely cancels all liabilities and the rights to replacement and guarantees.

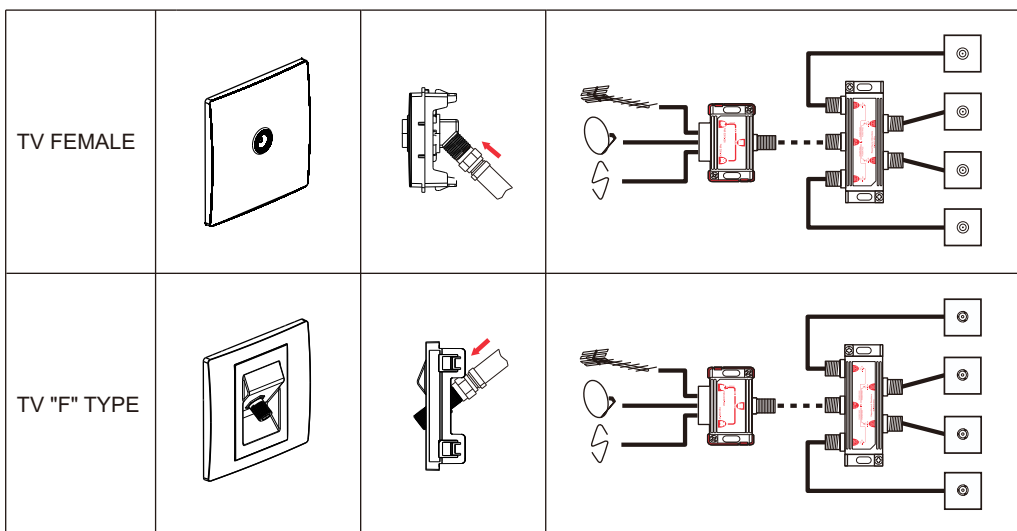
Use only Legrand brand accessories.

Description

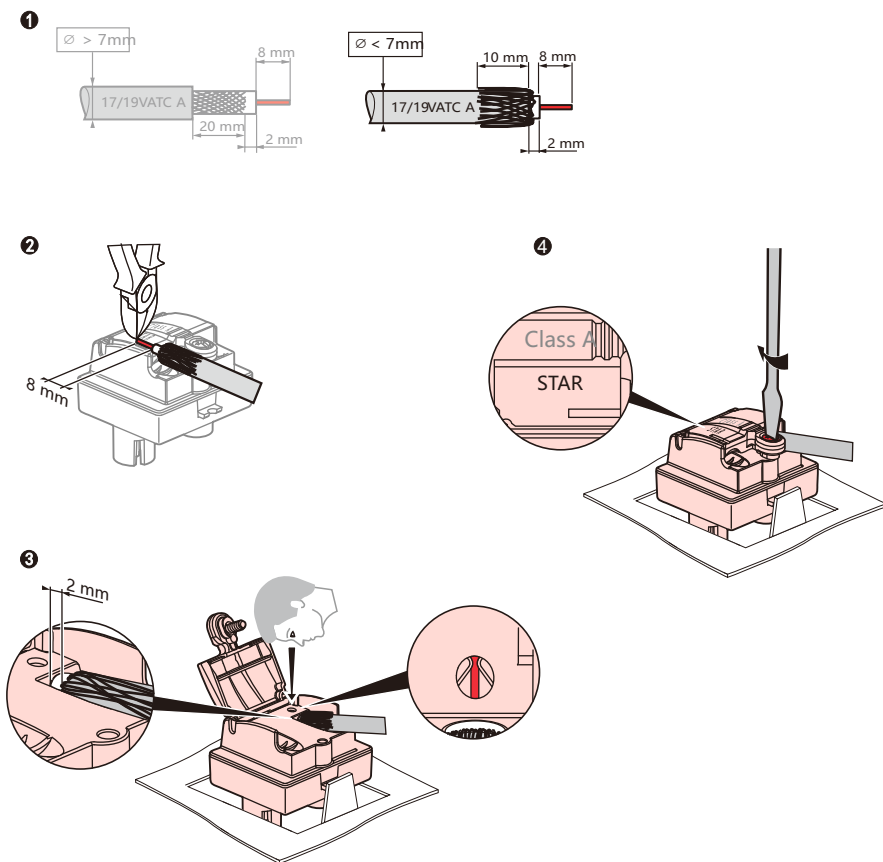
 -20°C...+70°C	 -5°C...+50°C	 ≥40mm
--	---	--

Wiring

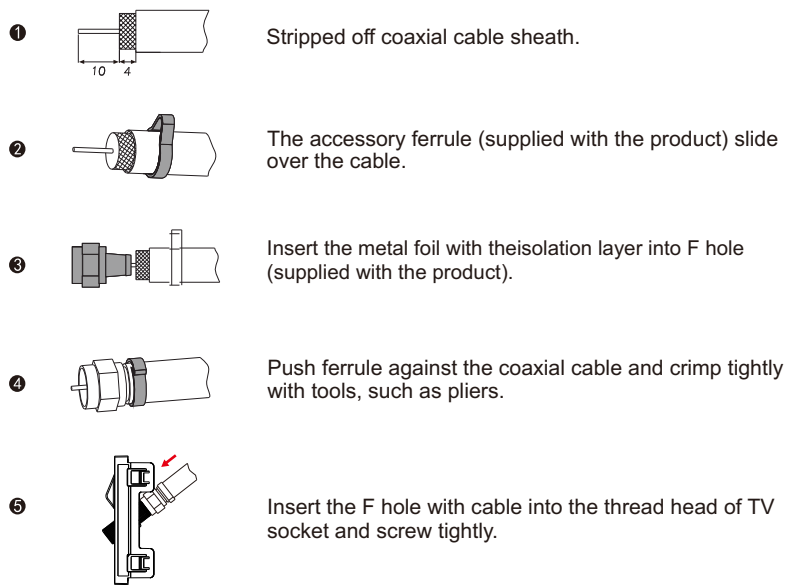
TV-SAT			
TV-R-SAT			
TV MALE			



### TV MALE, TV-SAT, TV-R-SAT



### TV FEMALE, TV "F" TYPE



### Installation

