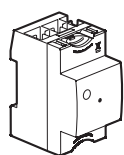


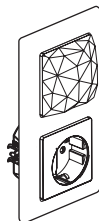
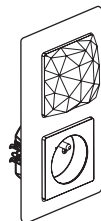
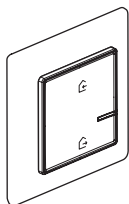
Nécessite l'installation préalable d'un pack de démarrage connecté «... with Netatmo».

Prise Control et Commande générale
sans fil Départ/Arrivée

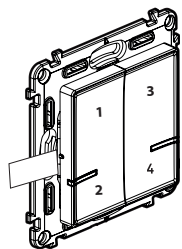
Module Control



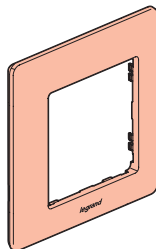
OU



Composition :



Commande sans fil
4 scénarios



Plaque de finition

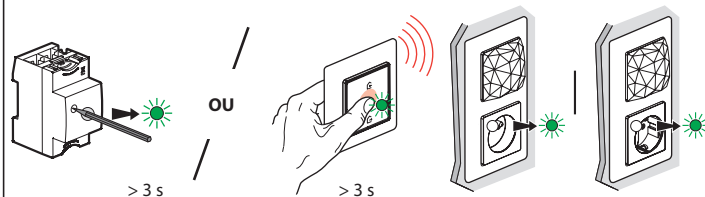
x 4

Adhésifs
repositionnables

Bande de fréquences : 2,4 à 2,4835 Ghz
Niveau de puissance : < 100 mW

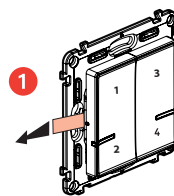
LE12185AA

① Démarrez la configuration de la commande sans fil 4 scénarios

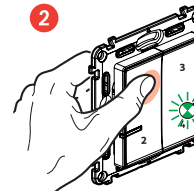


Appuyez sur le bouton de configuration du Module Control **ou** au centre de la Commande générale sans fil Départ/Arrivée **jusqu'à** ce que le voyant s'allume brièvement en vert, **puis relâchez l'appui**. Tous les voyants des produits câblés s'allument en vert fixe.

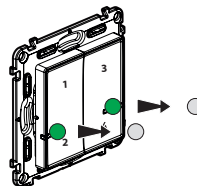
② Préparez la commande sans fil 4 scénarios



Retirez la languette de protection

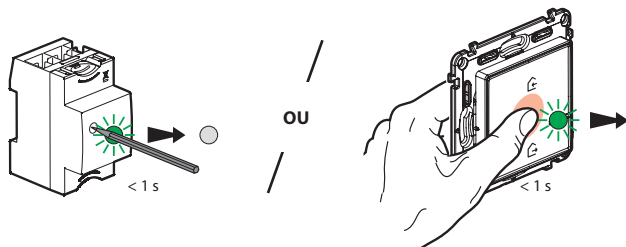


Appuyez **brièvement** sur **l'un des boutons** de la commande sans fil afin de l'activer, le voyant en bas à droite clignote en vert.



Les deux voyants de la commande sans fil passent en vert fixe puis s'éteignent. Votre commande est fonctionnelle.

③ Finalisez la configuration



Pour terminer votre installation, appuyez brièvement sur le bouton de configuration du **Module Control** ou au centre de la **Commande générale sans fil Départ/Arrivée**.

Tous les voyants des produits s'éteignent.

Personnalisez vos scénarios

- depuis l'application **Legrand Home + Control** (section **Paramètres/Scénarios**)
Laissez-vous guider

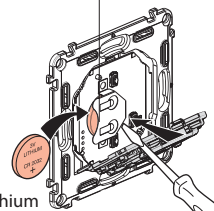
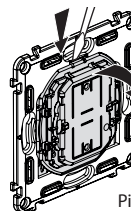
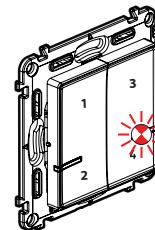


www.legrand.fr

LEGRAND - Pro and Consumer Service - BP 30076
87002 LIMOGES CEDEX FRANCE • www.legrand.com

Remplacement de la pile

Si la LED en bas à droite clignote 3 fois en rouge quand vous appuyez sur la commande 4 scénarios -> **pile faible**



Pile lithium
CR 2032
3 V

DÉCLARATION UE DE CONFORMITÉ SIMPLIFIÉE

Le soussigné,

Legrand

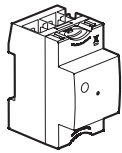
déclare que les équipements radioélectriques cités sur cette notice sont conformes à la directive 2014/53/UE. Le texte complet de la déclaration UE de conformité est disponible à l'adresse internet suivante :

www.legrandoc.com

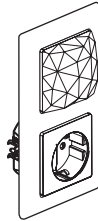
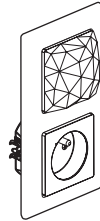
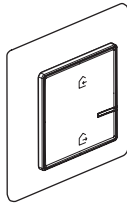
Requires you to buy and install the «... with Netatmo» connected starter pack

Gateway power outlet Control and Home/Away wireless
Master control

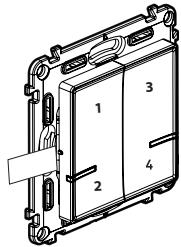
Control Module



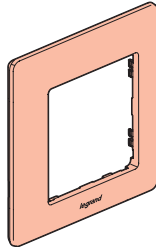
OR




Pack contents



Wireless 4 scenes control



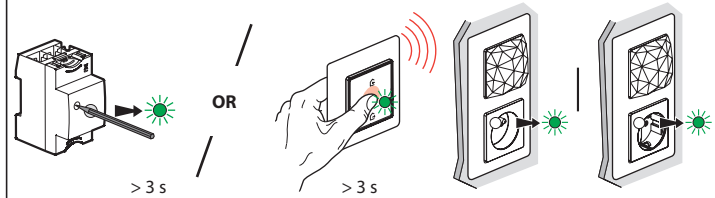
Finishing plate

 x 4
Removable stickers

Frequency bands: 2.4 - 2.4835 GHz
Power level: < 100 mW

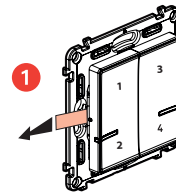
LE12185

① Start the wireless 4 scenes control configuration

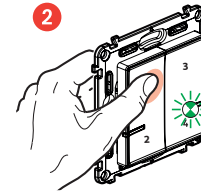


Press the middle of the wireless master switch **until** its light briefly turns green, **and then stop pressing**. The indicator lights on the products which you have wired will turn green.

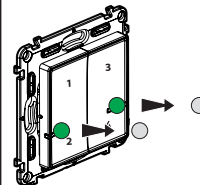
② Prepare the wireless 4 scenes control



Remove the battery's protective strip

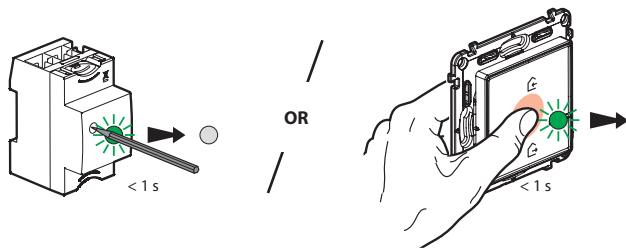


Briefly press one of the button of the wireless control to activate it. The indicator lights will flash green and then switch off.



The 2 indicator lights will flash green and then switch off. Your wireless control is ready.

3 Complete the configuration



To complete your installation, briefly press the configuration button of the **Control Modul** or in the middle of the **wireless master switch**.

All the indicator lights on the products switch off.

Personalize your scenes

from **Legrand Home + Control app** (Settings / Scenarios menu)
Let yourself be guided

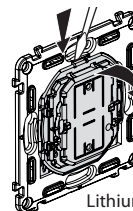
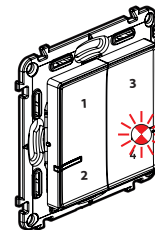


www.legrand.fr

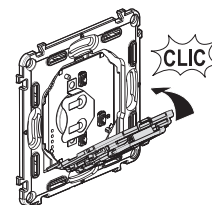
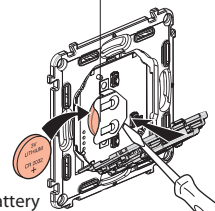
LEGRAND - Pro and Consumer Service - BP 30076
87002 LIMOGES CEDEX FRANCE • www.legrand.com

Battery replacement

If the led flashes 3 times in red when pressing a button -> **battery is low**



Lithium battery
CR 2032
3 V



SIMPLIFIED EU DECLARATION OF CONFORMITY

The undersigned,

Legrand

declares that the radio-electric equipment referred to in these instructions complies with directive 2014/53/EU.

The full text of the EU declaration of conformity is available on the following website :

www.legrandoc.com