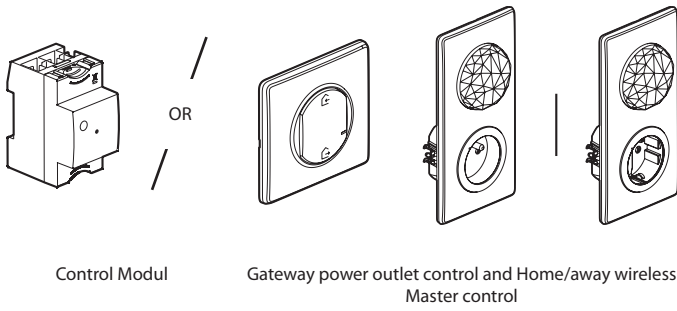
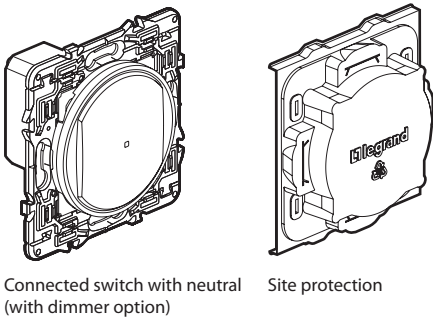


Requires you to buy and install the «... with Netatmo» connected starter pack



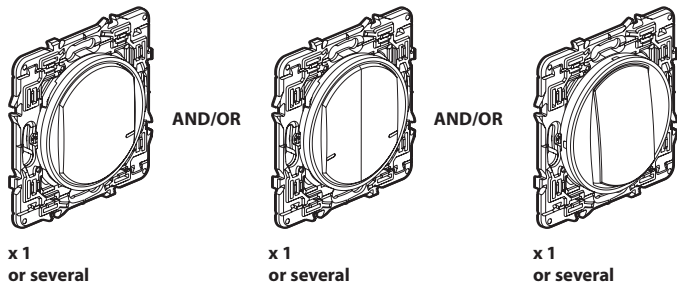
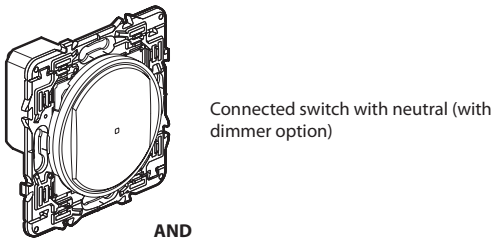
Pack contents :



LET2005AE

**Before starting : wiring precautions**

If you plan to install two-way light switches, read the following precautions :  
To control a light with **two or more switches**, only use the following products :



Wireless switches for all control points (not included in this pack)

up to 5 push buttons (not included in this pack)

**Do not use:** two connected switches (with dimmer option) to control the same lighting point.

**Characteristics**

In default operating mode (on/off), this switch works with the following bulbs :

**Do not use a smart bulb** with the connected switch with neutral (with dimmer option).

 +45° C -5° C 110-240 VAC 50/60 Hz	 2 x 1,5 mm <sup>2</sup>	 LED	 150 W 150 VA	 150 VA 75 VA	 150 VA 75 VA

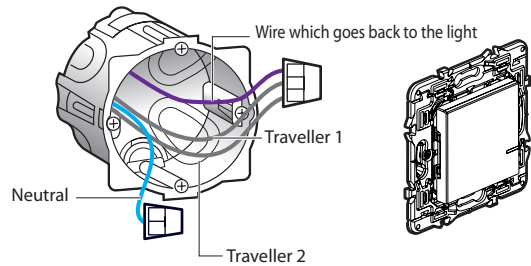
(\*) or 15 bulbs max. For comfortable lighting, we recommend using bulbs of the same type and make.

Product NOT COMPATIBLE with ferromagnetic transformer   
Risk of product breaking

**Do not use:** In dimmer option operating mode (which can be activated via the App), this switch functions only with dimmable bulbs (identifiable by the logo on packaging).

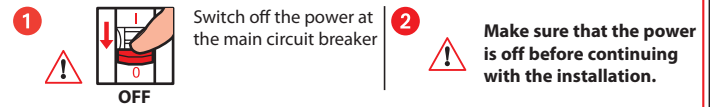
**Tip if replacing a two-way switch:**

old flush-mounted switch replaced by the wireless switch.

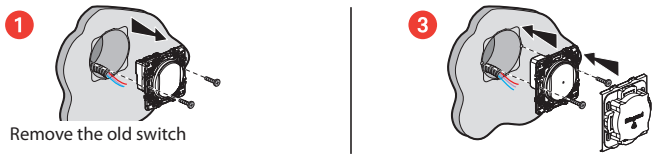


Use a **connector** to connect all 3 wires together (travellers 1 and 2 and lamp return wire).  
Use an other connector for neutral wire.

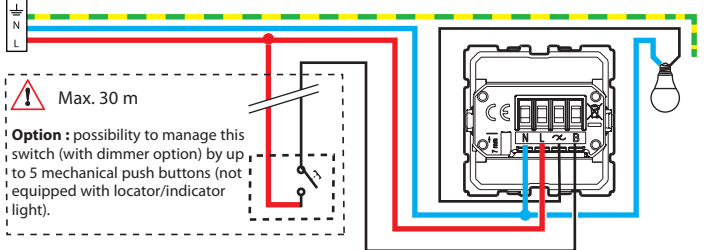
**1 Necessary safety precautions**



**2 Wire the connected switch with neutral (with dimmer option)**



**2 Wire the connected switch**



**Attention,** the dimmer must be installed on the lamp side

**Do not use:** The connected light switch (with dimmer option) works with standard bulbs or dimmable bulbs including LEDs. Using dimmable LEDs is mandatory if dimmer mode is activated.


③ To add a connected product to your connected installation, you should follow the instructions:

- in the **Home + Control application** (Settings/Add a new product section)
- or consult the user manual on **legrand.fr**



[www.legrand.fr](http://www.legrand.fr)

LEGRAND - Pro and Consumer Service - BP 30076  
87002 LIMOGES CEDEX FRANCE • [www.legrand.com](http://www.legrand.com)

 **Safety instructions**

This product should be installed in compliance with installation rules, preferably by a qualified electrician. Incorrect installation and/or incorrect use can lead to risk of electric shock or fire. Before carrying out the installation, read the instructions and take account of the product's specific mounting location. Do not open up, dismantle, alter or modify the device except where specifically required to do so by the instructions. All **Legrand** products must be opened and repaired exclusively by personnel trained and approved by **Legrand**. Any unauthorised opening or repair completely cancels all liabilities and the rights to replacement and guarantees. Use only **Legrand** brand accessories.

**SIMPLIFIED EU DECLARATION OF CONFORMITY**

The undersigned,

**Legrand**

declares that the radio-electric equipment referred to in these instructions complies with directive 2014/53/EU.

The full text of the EU declaration of conformity is available on the following website :

**[www.legrandoc.com](http://www.legrandoc.com)**