

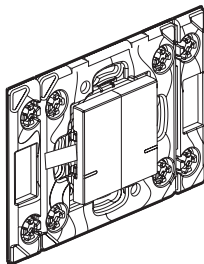
This product is a connected accessory which **requires** you to buy and install the Arteor with Netatmo connected starter pack and socket outlets, switches (with dimmer option) and/or connected lighting micromodules first.



This product only controls Arteor with Netatmo switches (with dimmer option), lighting micromodules and connected sockets.

Pack contents

Wireless lighting control



Frequency bands: 2.4 - 2.4835 GHz

Power level: < 100 mW

Installing the wireless lighting control

To pair the wireless control for lights and electrical devices with your connected installation, you should follow the instructions:

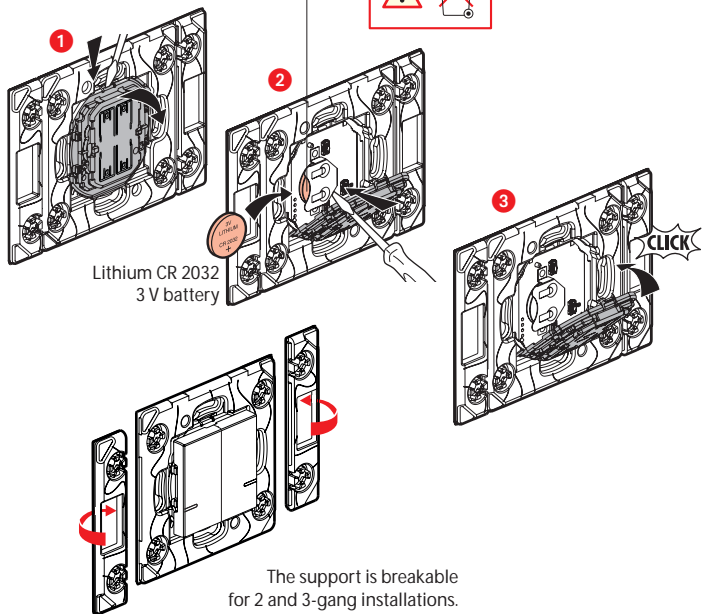
- in the **Legrand Home + Control** application (Settings/Add a new product section)
- or consult the guides and leaflets on **legrand.fr**



www.legrand.fr/reference/574244

LEGRAND - Pro and Consumer Service - BP 30076
87002 LIMOGES CEDEX FRANCE • www.legrand.com

Replacing the battery



SIMPLIFIED EU DECLARATION OF CONFORMITY

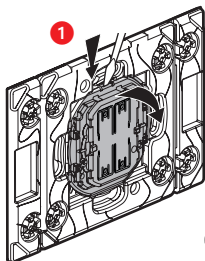
The undersigned,

Legrand

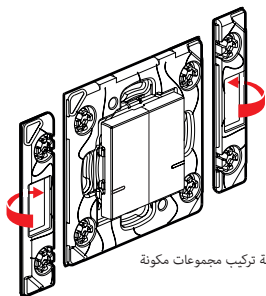
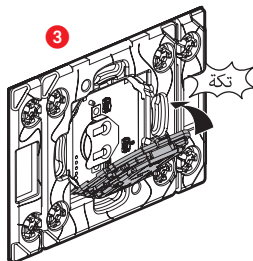
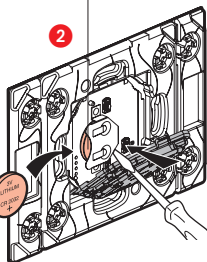
declares that the radio-electric equipment referred to in these instructions complies with directive 2014/53/EU.

The full text of the EU declaration of conformity is available on the following website:

www.legrandoc.com



بطارية ليثيوم CR 2032
بجهد 3 فولت



قد ينفصل الهيكل في حالة تركيب مجموعات مكونة
من منتجين أو ثلاثة.

SIMPLIFIED EU DECLARATION OF CONFORMITY

The undersigned,

Legrand

declares that the radio-electric equipment referred to in these instructions
complies with directive 2014/53/EU.

The full text of the EU declaration of conformity
is available on the following website:

www.legrandoc.com