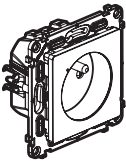
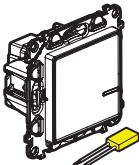


This pack contains connected accessories. It **requires** you to install the Valena Life with Netatmo connected starter pack first.

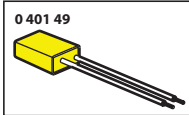
Pack contents



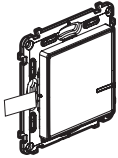
Connected power outlet



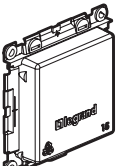
Connected light switch
(with dimmer option)
+ bleeder



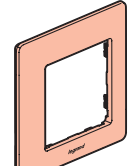
	100/240 V~
	50/60 Hz
	11 mA
	-5°C → +55°C



Wireless light switch




Site protection



Finishing plate



Removable sticker

 This product only controls Valena Life with Netatmo light switches (with dimmer option), lighting micromodules and connected power outlets.

Safety instructions

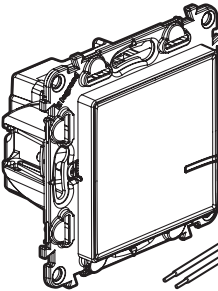
This product should be installed in compliance with installation rules, preferably by a qualified electrician. Incorrect installation and/or incorrect use can lead to risk of electric shock or fire. Before carrying out the installation, read the instructions and take account of the product's specific mounting location. Do not open up, dismantle, alter or modify the device except where specifically required to do so by the instructions. All **Legrand** products must be opened and repaired exclusively by personnel trained and approved by **Legrand**. Any unauthorised opening or repair completely cancels all liabilities and the rights to replacement and guarantees. Use only **Legrand** brand accessories.

LE11234AA

Before you start: wiring precautions

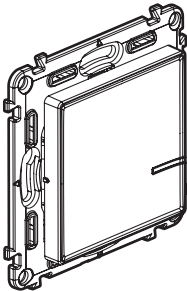
If you plan to install two-way light switches or switched power outlets, read the following precautions:

To control a light **with two or more switches**, only use the following products:




Connected light switch
(with dimmer option) + bleeder

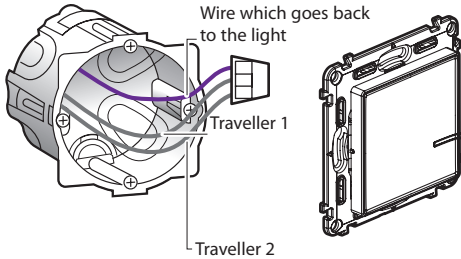
AND



Wireless switches for all control points (1
wireless switch included in this pack)

 **Do not use:** two connected switches (with dimmer option) to control the same lighting point.

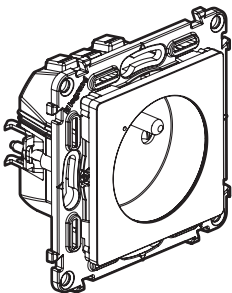
Tip if replacing a two-way switch: old flush-mounted switch replaced by the wireless switch.



Use a **connector** to connect all three wires (traveller wires 1 and 2 and the one which goes back to the light).

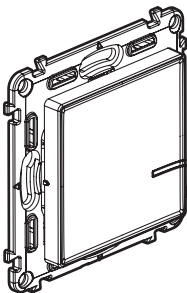
Before you start: wiring precautions (cont.)

To control a power outlet, only use the following products:




Connected power outlet

AND



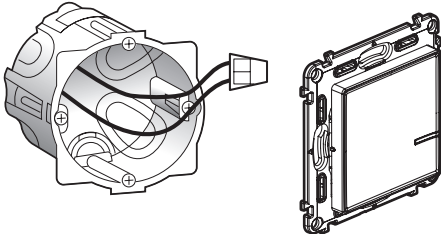
Wireless switches for all control points
(1 wireless light switch included in
this pack)


 **Do not use:** a connected light switch (with dimmer option) + bleeder to control a connected power outlet or a traditional power outlet.

If you are replacing a switched power outlet:

Tip if you are replacing an old flush-mounted switch (replaced with a wireless switch)

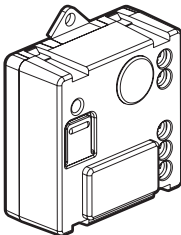
Use a **connector** to connect the two wires.



 The circuit must be protected by a 16 A circuit breaker


Before you start: wiring precautions (cont.)

To replace a remote switch, only use the following product:



Connected lighting micromodule
(not included in this pack)

You can keep the existing push buttons or replace them with wireless switches.

 **Do not use:** a connected light switch (with dimmer option) + bleeder to control a connected lighting micromodule.

① Necessary safety precautions



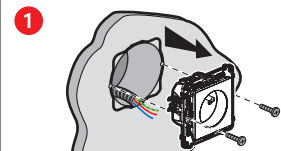
OFF
Switch off the power at the main circuit breaker

2

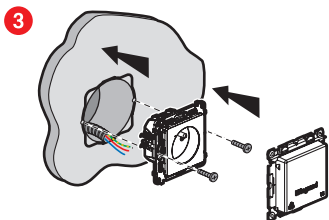


Make sure that the power is off before continuing with the installation.

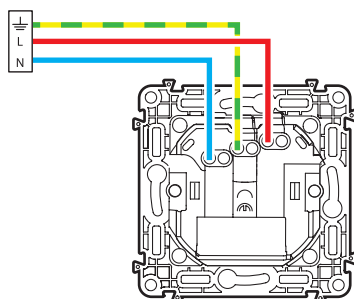
② Install the connected power outlet



Remove the existing power outlet



2 Wire the connected power outlet



2.5 mm² rigid wire

**16 A - 230 V~
3680 W max
cos 0.8**

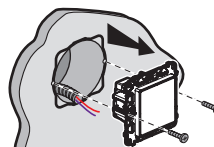
Frequency bands: 2.4 - 2.4835 GHz
Power level: < 100 mW

— N (neutral) = blue
— L (live) = any except blue and green/yellow
— ⊕ (earth) = green/yellow

5

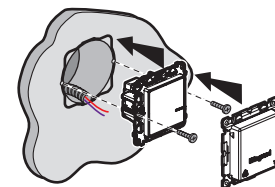
③ Install the connected light switch (with dimmer option)

1



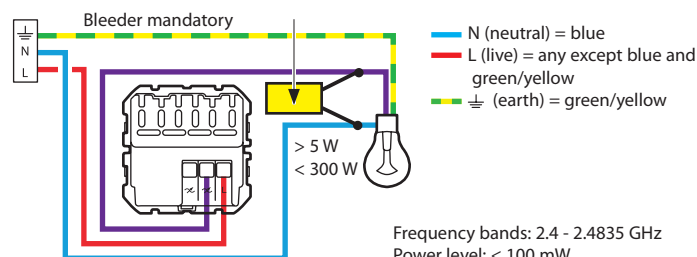
Remove the existing switch

3



2

Wire the connected light switch



Frequency bands: 2.4 - 2.4835 GHz
Power level: < 100 mW

To ensure that your connected switch (with dimmer option) works correctly, you **must** wire **the bleeder** provided as close to the load as possible and put **a bulb** in before turning the power on.



The connected light switch (with dimmer option) works with standard bulbs or dimmable bulbs including LEDs over 5 W. Using dimmable LEDs is recommended for optimal installation results.



If you have wired your bleeder but you are using non-dimmable LED bulbs, it is possible that your bulbs will not go out fully or will flicker. If this is the case, refer to the table of recommended bulbs on the legrand.fr website.

6

③ Install the connected light switch (with dimmer option) (cont.)

In default operating mode (on/off), this switch works with the following bulbs:

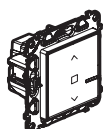
Temperature	Switch	LED Dimmable	LED Non-dimmable	LED Strip	LED Strip (SMD)
+45°C +5°C	2 x 2,5 mm ²	LED Dimmable	LED Non-dimmable	LED Strip	LED Strip (SMD)
100-240 VAC 50/60 Hz	Max. 300 W Min. 7 W	(*)60 W 5 W	60 W 9 W	300 VA 10 VA	300 VA 35 VA
240 VAC	Max. 150 W Min. 7 W	(*)30 W 5 W	30 W 9 W	150 VA 10 VA	150 VA 35 VA
100 VAC	Max. 150 W Min. 7 W	(*)30 W 5 W	30 W 9 W	150 VA 10 VA	150 VA 35 VA

(*) Or 10 lamps max. For comfortable lighting, we recommend using bulbs of the same type and make.
(**) Only use transformers designed to work with electronic switches. Take the losses of the transformers into account in the calculation of the power. The transformers must be charged to more than 60% of their power.

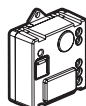
With the dimmer option operating mode (which can be activated in the App), this switch only works with dimmable bulbs (which can be identified by the logo on the packaging).



④ Complete your installation with additional products (not included in this pack) :

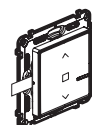


Connected roller shutter switch



Connected lighting micromodule

Wire the wired products using the individual installation instructions provided in the packaging for each of them.



Roller shutter wireless switch



Wake Up/Sleep wireless switch

The wireless switches will be installed later.

7

⑤ To add a connected product to your connected installation, you should follow the instructions:

- in the **user guide in your connected starter pack**
- in the **Home + Control application (Settings/Add a new product section)**
- or consult the user manual on legrand.fr

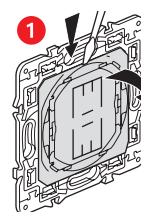


www.legrand.fr

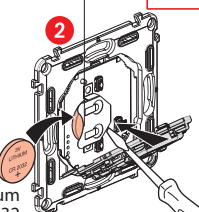
LEGRAND - Pro and Consumer Service - BP 30076
87002 LIMOGES CEDEX FRANCE - www.legrand.com

Replacing the battery

1

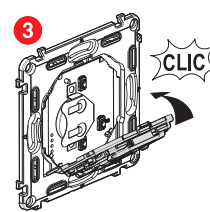


2



Lithium
CR 2032
3 V battery

3



CLIC

SIMPLIFIED EU DECLARATION OF CONFORMITY

The undersigned,

Legrand

declares that the radio-electric equipment referred to in these instructions complies with directive 2014/53/EU.

The full text of the EU declaration of conformity is available on the following website :

www.legrandoc.com