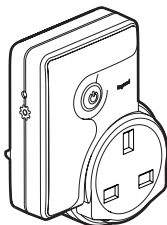


This pack is a connected accessory which **requires** you to buy and install the "... with Netatmo" connected starter pack first.

Pack contents:

Connected mobile power outlet



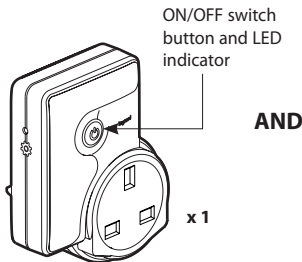
13 A - 230 V~
3000 W max.

Frequency bands: 2.4 - 2.4835 GHz

Power level: < 100 mW

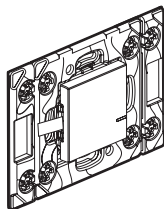
Before you start:

To control a connected mobile power outlet, only use the following products:



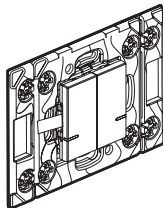
ON/OFF switch
button and LED
indicator

AND



x 1
or several

AND/OR

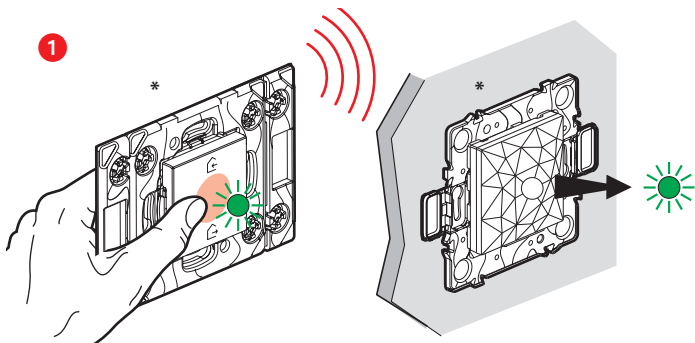


x 1
or several

Connected mobile
power outlet

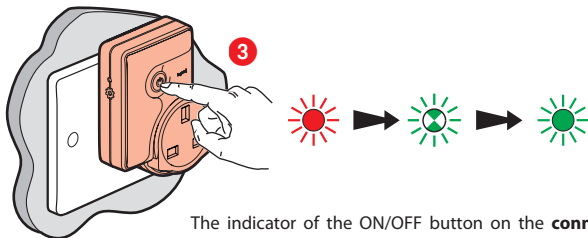
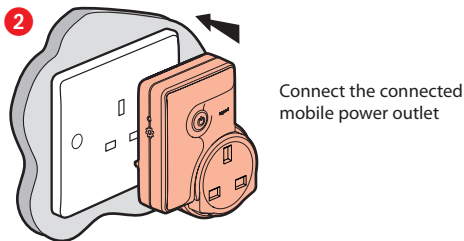
Wireless switches (peripherals) for all control points
(not included in this pack)

Configure the connected mobile power outlet



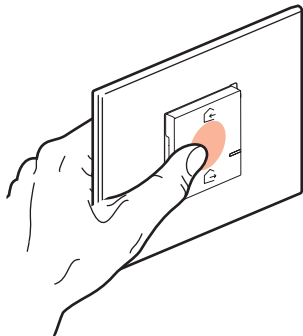
Press the centre of the **wireless master switch** until the indicator lights up in green, release and the indicator will go off.

**(not included in this pack)*



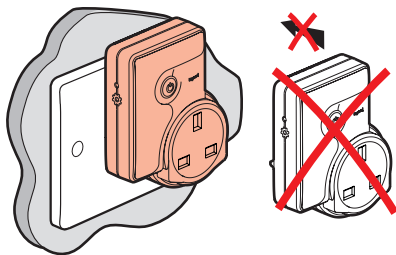
Configure the connected mobile power outlet *(continued)*

4



Short press on the wireless master switch to finalise the installation.
The indicator on the connected mobile power outlet goes off.

Open the **Legrand Home + Control application** and follow the instructions.



**To plug a connected mobile power outlet
into another connected mobile power outlet is forbidden**



www.legrand.fr/reference/064889

LEGRAND - Pro and Consumer Service - BP 30076
87002 LIMOGES CEDEX FRANCE • www.legrand.com

 **Safety instructions**

This product should be installed in compliance with installation rules, preferably by a qualified electrician. Incorrect installation and/or incorrect use can lead to risk of electric shock or fire.

Before carrying out the installation, read the instructions and take account of the product's specific mounting location.

Do not open up, dismantle, alter or modify the device except where specifically required to do so by the instructions. All Legrand products must be opened and repaired exclusively by personnel trained and approved by Legrand. Any unauthorised opening or repair completely cancels all liabilities and the rights to replacement and guarantees. Use only Legrand brand accessories.

SIMPLIFIED EU DECLARATION OF CONFORMITY

The undersigned,

Legrand

declares that the radio-electric equipment referred to in these instructions
complies with directive 2014/53/EU.

The full text of the EU declaration of conformity
is available on the following website:

www.legrandoc.com