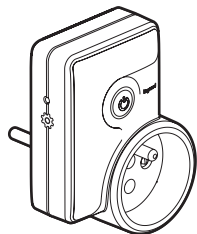


This pack is a connected accessory which **requires** you to buy and install the «... with Netatmo» connected starter pack first.

### Pack contents

Connected mobile power outlet

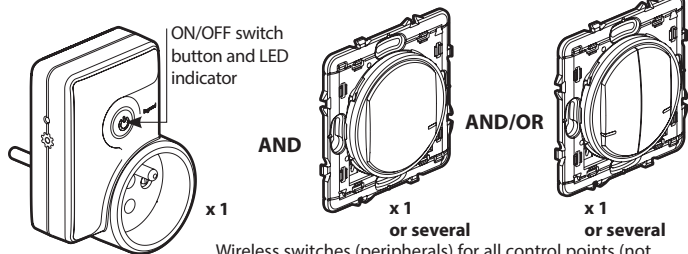


16 A - 230 V~  
3680 W max

Frequency bands: 2.4 - 2.4835 GHz  
Power level: < 100 mW

### Before you start:

To control a power outlet, only use the following products:



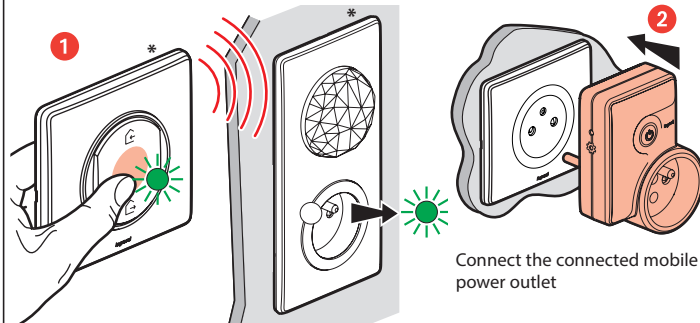
Wireless switches (peripherals) for all control points (not

Connected mobile power outlet included in this pack)

### ⚠ Safety instructions

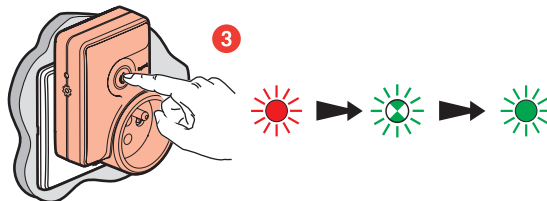
This product should be installed in compliance with installation rules, preferably by a qualified electrician. Incorrect installation and/or incorrect use can lead to risk of electric shock or fire. Before carrying out the installation, read the instructions and take account of the product's specific mounting location. Do not open up, dismantle, alter or modify the device except where specifically required to do so by the instructions. All Legrand products must be opened and repaired exclusively by personnel trained and approved by Legrand. Any unauthorised opening or repair completely cancels all liabilities and the rights to replacement and guarantees. Use only Legrand brand accessories.

### Configure the connected mobile power outlet

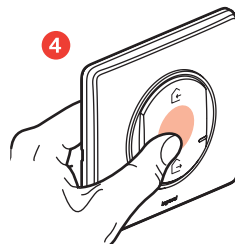


Press the centre of the **wireless master switch** until the indicator lights up in green, release and the indicator will go off

*\*(not included in this pack)*



The indicator of the ON/OFF button on the **connected mobile power outlet** initially lights up in red. Press the button until the indicator flashes in green, then wait for the indicator to light up steady in green: configuration is complete.



**Short press on the wireless master switch** to finalise the installation.

The indicator on the connected mobile power outlet goes off.  
Open the **Legrand Home + Control application** and follow the instructions.



[www.legrand.fr](http://www.legrand.fr)

LEGRAND - Pro and Consumer Service - BP 30076  
87002 LIMOGES CEDEX FRANCE • [www.legrand.com](http://www.legrand.com)

## SIMPLIFIED **EU** DECLARATION OF CONFORMITY

The undersigned,

***Legrand***

declares that the radio-electric equipment referred to in these instructions  
complies with directive 2014/53/EU.

The full text of the EU declaration of conformity  
is available on the following website:

***[www.legrandoc.com](http://www.legrandoc.com)***