

This pack enables you to create a radio-controlled 2-way switch in your home. You can complete this pack with the compatible products in the Valena Life with Netatmo range: **power outlets, light switches, lighting micromodules and wireless light switches** sold separately.

Pack contents

Pre-paired light switch + bleeder

Pre-paired wireless light switch

Site protection

Finishing plate

Removable stickers

0 401 49

	100/240 V~
	50/60 Hz
	11 mA
	-5° C → +55° C

Safety instructions

This product should be installed in compliance with installation rules, preferably by a qualified electrician. Incorrect installation and/or incorrect use can lead to risk of electric shock or fire. Before carrying out the installation, read the instructions and take account of the product's specific mounting location. Do not open up, dismantle, alter or modify the device except where specifically required to do so by the instructions. All **Legrand** products must be opened and repaired exclusively by personnel trained and approved by **Legrand**. Any unauthorised opening or repair completely cancels all liabilities and the rights to replacement and guarantees. Use only **Legrand** brand accessories.

LE10945AA

Before you start: wiring precautions

To control a light **with two or more switches**, only use the following products:

Light switch + bleeder (included in this pack)

AND

Wireless light switches (one wireless switch included in this pack)

Do not use: two light switches from the Valena Life with Netatmo range to control the same lighting point.

Tip if replacing a 2-way switch: old flush-mounted switch replaced by the wireless switch.

Wire which goes back to the light

Traveller 1

Traveller 2

Use a **connector** to connect all 3 wires together (travellers 1 and 2 and lamp return wire).

1 Necessary safety precautions

OFF
Switch off the power at the main circuit breaker.

Make sure that the power is off before continuing with the installation.

2 Install the switch

Remove the existing switch.

Wire the switch.

Bleeder mandatory

N (neutral) = blue

L (live) = any except blue and green/yellow

⊕ (earth) = green/yellow

> 5 W

< 300 W

Frequency bands: 2.4 - 2.4835 GHz

Power level: < 100 mW

To ensure that your switch works correctly, you **must** wire the **bleeder** provided as close to the load as possible and put a **bulb** in before turning the power on.

2 Install the switch connected (with dimmer option)(cont.)

In default mode (on/off), this switch works with the following types of bulb :

100-240 VAC 50/60 Hz	2 x 2,5 mm ²				
240 VAC	Max.	300 W	(*)60 W	60 W	300 VA
	Min.	7 W	5 W	9 W	10 VA
100 VAC	Max.	150 W	(**)30 W	30 W	150 VA
	Min.	7 W	5 W	9 W	10 VA

(*) Or 10 bulbs max. For comfortable lighting, we recommend using bulbs of the same type and make.

(**) Using only transformers intended for operation with electronic switches. Take account of transformer losses for power calculations. Transformers should be charged to over 60% of their rated power.

3 Connect the switch to the power supply

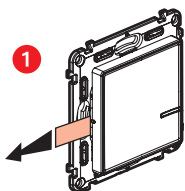
Mandatory installation step:

1 Turn the power back on at the main circuit breaker.

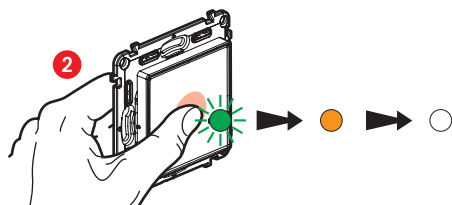
ON

2 The switch indicator light flashes orange.

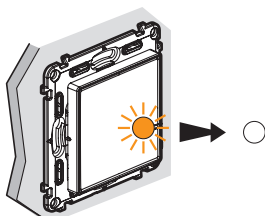
4 Install the wireless switch included in this pack



Take the wireless switch **included in this pack**.
Remove the protective strip from the battery to power up the switch.



Press the wireless switch **briefly** to activate it. The indicator light will flash green and then turn permanently orange, then switch off.



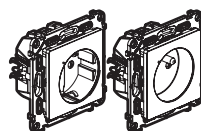
The indicator light on the **wired switch** supplied in the pack goes off.

The 2-way switch is now functional.

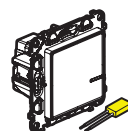
5

If you want to add one or more wireless switches, go straight to step 8.

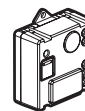
5 You want to add one or more wired products



Power outlet



Light switch + bleeder



Lighting micromodule

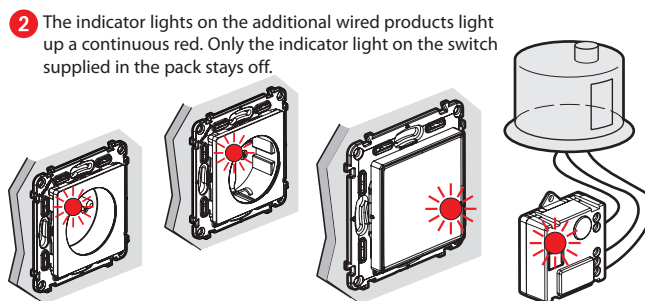
Wire the wired products using the individual user instructions provided in the packaging for each of them.

6 Power the wired products



Turn the power back on at the main circuit breaker.

You must power all the wired products simultaneously.

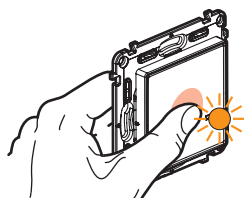


2 The indicator lights on the additional wired products light up a continuous red. Only the indicator light on the switch supplied in the pack stays off.

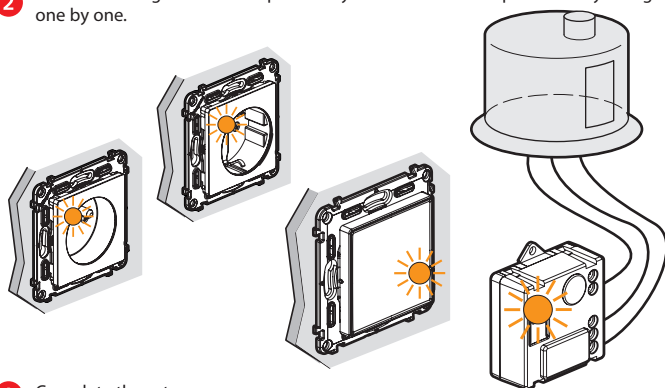
6

7 Start setting up the additional wired products

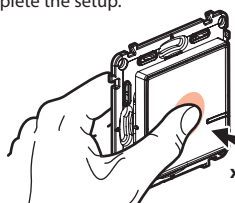
1 Press the button of the wireless switch already installed (it is included in the initial pack) in the centre, until its light briefly shines orange, **then release**.



2 The indicator lights on the all products you have wired turn permanently orange one by one.



3 Complete the setup.



Briefly press the centre of one of the wireless switches twice.

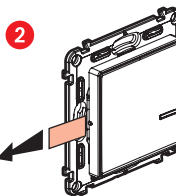
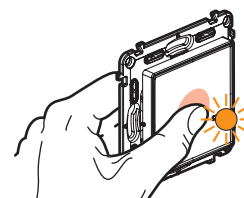
All the indicator lights on the products switch off.

The centralised control system is now functional. Any one of your wireless switches now controls all your wired products.

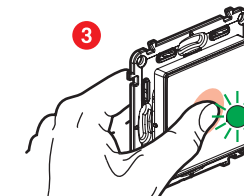
7

8 Install any additional wireless switches:

1 Press the button of the wireless switch already installed (it is included in the initial pack) in the centre, until its light briefly shines orange, **then release**.

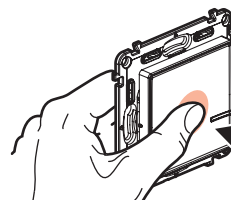


Remove the protective strips from each of the wireless switches.



Briefly press each of the wireless switches to activate them. The indicator lights will flash green then light up permanently orange and then switch off.

4 Complete the setup.



Briefly press the centre of one of the wireless switches twice.

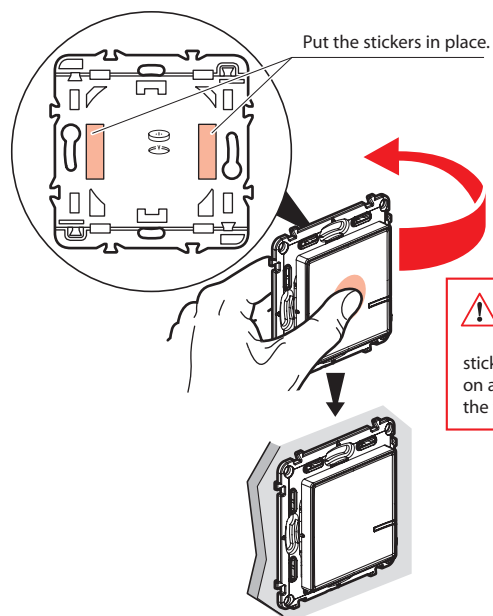
All the indicator lights on the products switch off.

The centralised control system is now functional. Any one of your wireless switches now controls all your wired products.

8

9 Attach the wireless switches

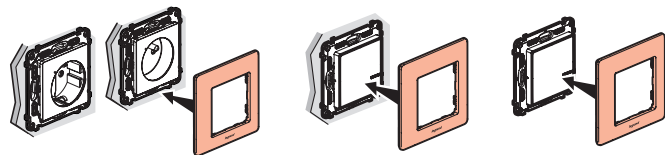
Attach the wireless switch(es) in the required places.



You can also attach the wireless switch(es) permanently to the wall with screws.

10 Install the finishing plates

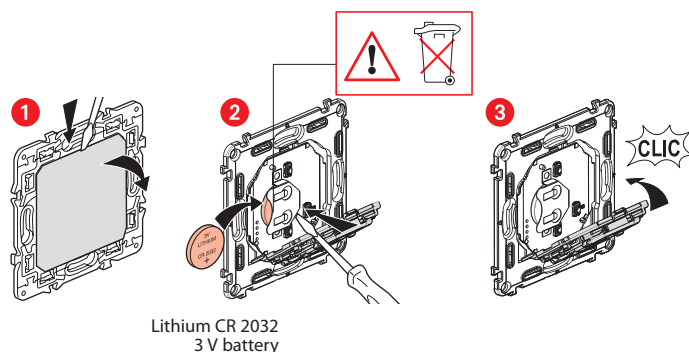
Install the finishing plates on all of the products installed.



www.legrand.fr

LEGRAND - Pro and Consumer Service - BP 30076
87002 LIMOGES CEDEX FRANCE • www.legrand.com

Replacing the battery of a wireless switch



Lithium CR 2032
3 V battery

SIMPLIFIED EU DECLARATION OF CONFORMITY

The undersigned,

Legrand

declares that the radio-electric equipment referred to
in these instructions complies with directive 2014/53/EU.
The full text of the EU declaration of conformity is available
on the following website:

www.legrandoc.com