

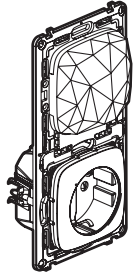
## Connected starter pack

7 525 96 - 7 526 96 - 7 527 96 - 7 528 96 - 7 529 96

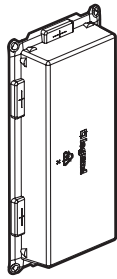


This pack enables you to create a connected installation in your home. You can complete your installation with Valena Allure with Netatmo power outlets, switches, lighting micromodules and wireless switches.

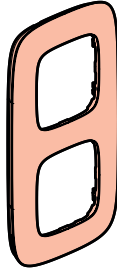
### Pack contents



Gateway power outlet Control



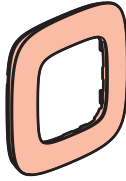
Site protection



Double finishing plate



Home/Away wireless master switch



Finishing plate



Removable stickers

### Safety instructions

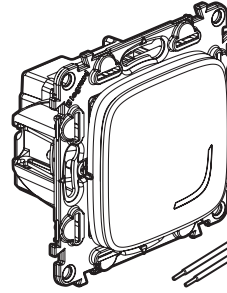
This product should be installed in compliance with installation rules, preferably by a qualified electrician. Incorrect installation and/or incorrect use can lead to risk of electric shock or fire. Before carrying out the installation, read the instructions and take account of the product's specific mounting location. Do not open up, dismantle, alter or modify the device except where specifically required to do so by the instructions. All **Legrand** products must be opened and repaired exclusively by personnel trained and approved by **Legrand**. Any unauthorised opening or repair completely cancels all liabilities and the rights to replacement and guarantees. Use only **Legrand** brand accessories.

LET0671AA

## Before you start: wiring precautions

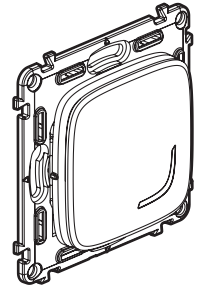
If you plan to install two-way light switches or switched power outlets, read the following precautions:

**To control a light with two or more switches, only use the products:**



Connected light switch (with dimmer option) + bleeder (not included in this pack)

AND



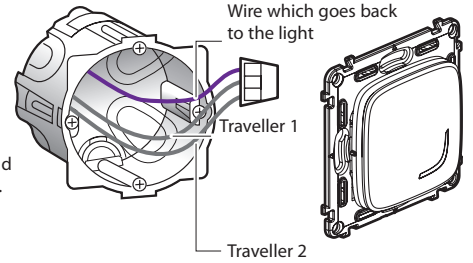
x 1 or several



**Do not use:** two connected light switches (with dimmer option) to control the same lighting point.

**Tip if replacing a two-way switch:** old flush-mounted switch replaced by the wireless switch.

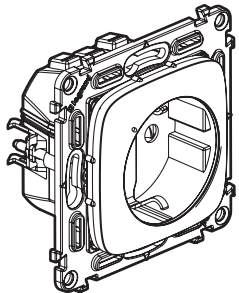
Use a **connector** to connect all 3 wires together (travellers 1 and 2 and lamp return wire).



2

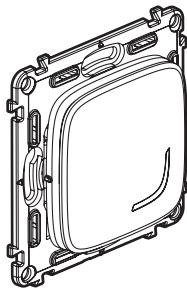
## Before you start: wiring precautions (cont.)

**To create a switched power outlet:**



Connected power outlet (not included in this pack)

AND



Wireless switches for all other control points (not included in this pack)

x 1

or several

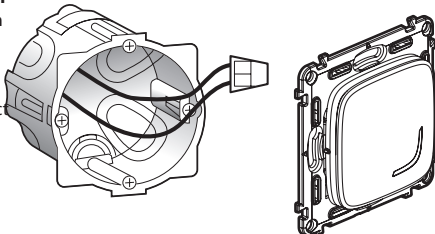


**Do not use:** a connected switch (with dimmer option) to control a connected power outlet.

**If you are replacing a switched power outlet:**

**Tip if you are replacing an old flush-mounted switch (replaced by the wireless switch)**

Use a **connector** to connect the two wires.

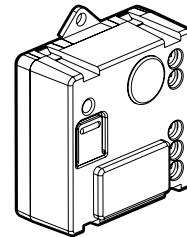


The head protection must be 16 A

3

## Before you start: wiring precautions (cont.)

**To replace a remote switch, only use the product:**



Connected lighting micromodule (not included in this pack)

x 1

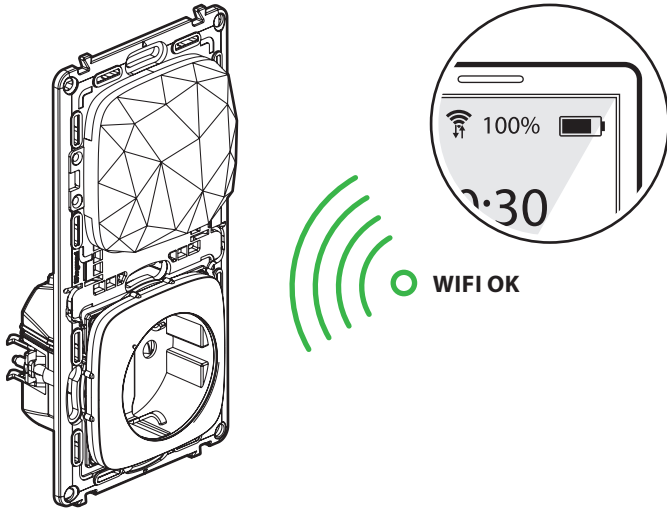
You can keep the existing push buttons or replace them with wireless switches.



**Do not use:** a connected light switch (with dimmer option) to control a connected lighting micromodule.

4

- ① **Step by step installation**  
Choose a place to put the gateway power outlet Control, where a standard power outlet is located:



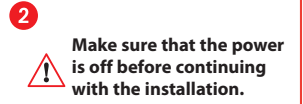
- ① If there is an Internet router in the home, use a smartphone to check if the Wi-Fi signal is strong enough in the chosen place.
- ② If there isn't a router yet, choose a place near a fibre or telephone outlet which will be used for the router.
- ③ Install the **gateway power outlet Control** where the selected standard power outlet is. This is compatible with standard, 40mm-deep flush-mounting boxes attached with screws or claws.

5

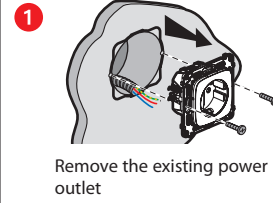
- ② **Necessary safety precautions**



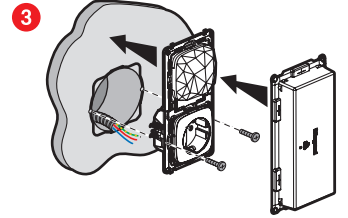
Switch off the power at the main circuit breaker



- ③ **Install the gateway power outlet Control**



Remove the existing power outlet



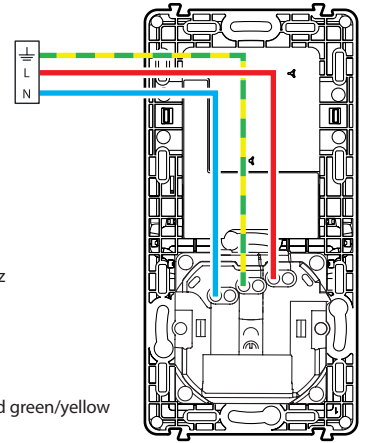
- ② Wire the gateway power outlet Control

2.5 mm<sup>2</sup> rigid wire (recommended)

16 A - 230 V~  
3680 W max  
cos 0.8

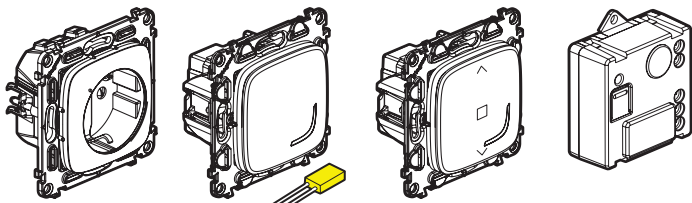
Frequency bands: 2.4 - 2.4835 GHz  
Power level: < 100 mW

— N (neutral) = blue  
— L (live) = any except blue and green/yellow  
— ⚬ (earth) = green/yellow



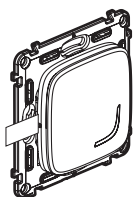
6

- ④ **Complete your installation with additional products (not included in this pack) :**

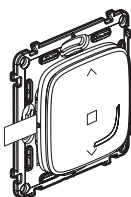


Connected power outlet  
Connected light switch (with dimmer option) + bleeder  
Connected roller shutter switch  
Connected lighting micromodule

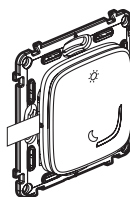
Wire the wired products using the individual installation instructions provided in the packaging for each of them.



Wireless light switch



Roller shutters wireless switch



Wake up/Sleep wireless switch

The wireless switches will be installed later.

7

- ⑤ **Power the wired products**



**Mandatory installation step:**



OFF

Ensure that the main circuit breaker has been cut off and that no product is being powered.

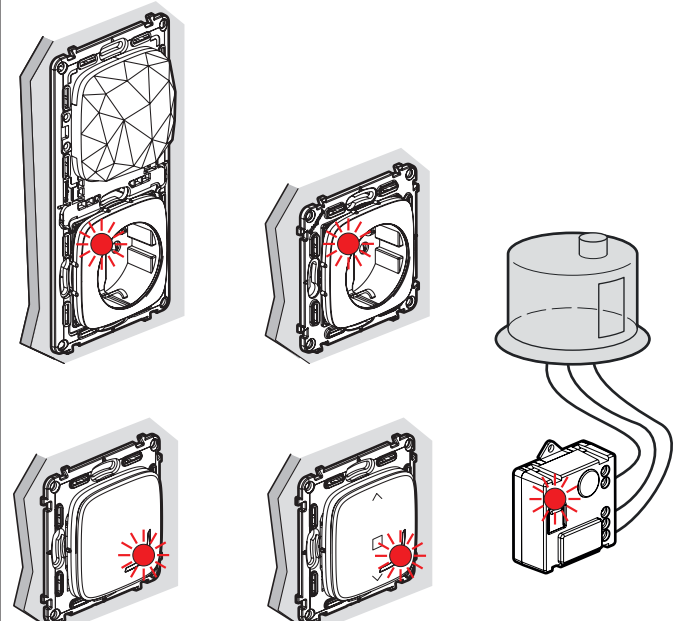


ON

Turn the power back on at the main circuit breaker.

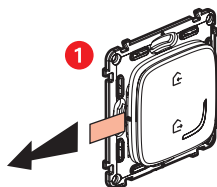
**All wired products must be supplied with power simultaneously.**

- ③ The indicator lights on the products that you have wired turn red.

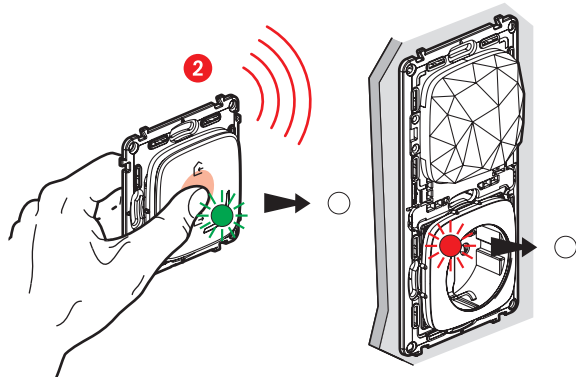


8

## ⑥ Power the wireless master switch:



Remove the battery's protective strip to power the **wireless master switch**.



Press the **wireless master switch** briefly to activate it. The indicator light will flash green and then switch off.

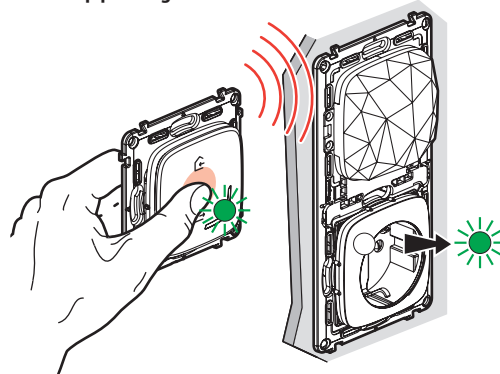
The indicator light on the **gateway power outlet Control** will also switch off.

Do not fix the wireless switch to the wall. The installation will be completed in step 12.

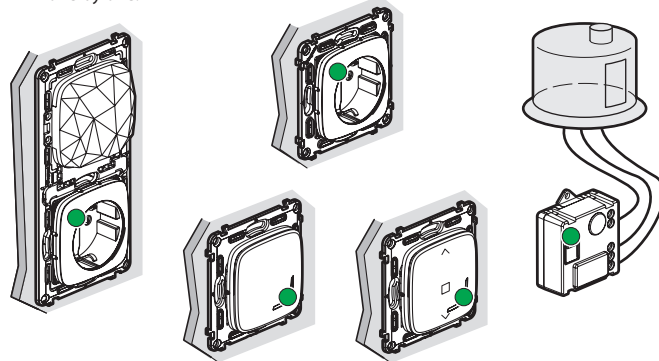
9

## ⑦ Start to configure the installed products:

- 1 Take the **wireless master switch** near to the **gateway power outlet Control** and press the middle of the wireless switch **until** its light briefly turns green, **and then stop pressing**.



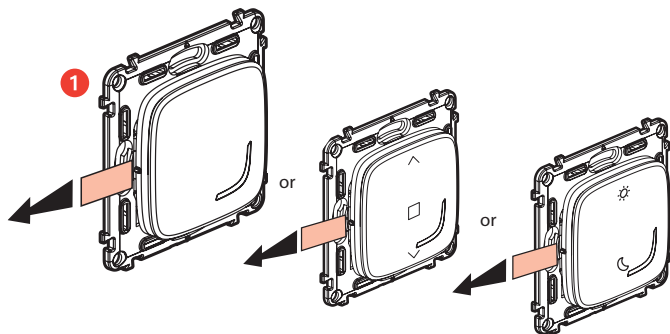
- 2 The indicator lights on the products which you have wired will turn green one by one.



**Note:** If the lights on some products have not turned green and stopped flashing, go through the steps 5 and 7 again.

10

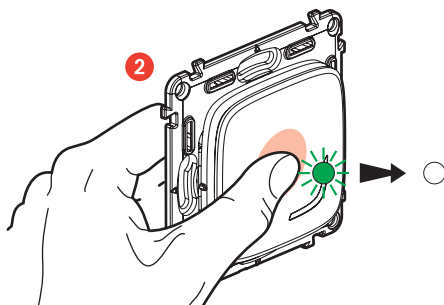
## ⑧ Prepare the wireless switches:



Not included in this pack.

Not included in this pack.

Remove the protective strip from each of the wireless switches.



**Briefly** press each of the wireless switches to activate them. The indicator lights will flash green and then switch off.

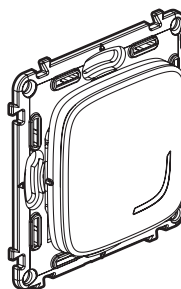
Do not fix the wireless switch to the wall.  
The installation will be completed in step 12.

11

## ⑨ Pair the wireless switches to control the connected switches and connected power outlets:

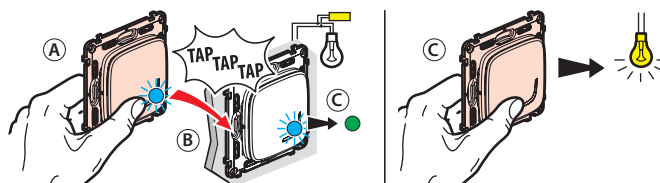
- Make sure that the indicator lights on the wired products are green and not flashing. If not, go back to step 8.

### ① How to pair a wireless light switch ?



This product controls only switches (with dimming option), lighting micromodules and connected power outlets.

### ② To pair a wireless switch with a connected light switch

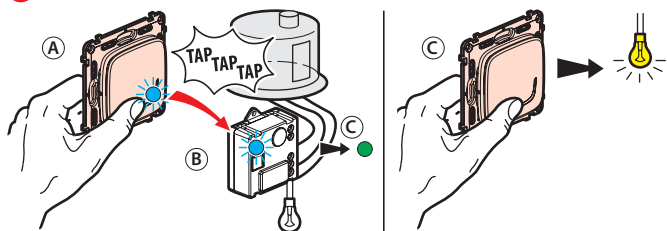


- Press on the wireless switch you wish to pair, while tapping it three times onto the light switch you wish to control.
- The indicator lights on the two products will flash blue rapidly.
- The indicator lights on the two products will briefly turn blue and not flash, and then the light on the wired product will turn green again and the light on the wireless switch will switch off. The pairing was successful.

12

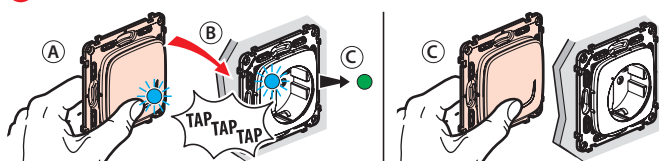
**9 Pair the wireless switches to control the connected switches and connected power outlets (cont.):**

**3 To pair a wireless switch with a connected lighting micromodule**



- (A) Press on the wireless switch you wish to pair, while tapping it three times onto the micromodule you wish to control.
- (B) The indicator lights on the two products will flash blue rapidly.
- (C) The indicator lights on the two products will briefly turn blue and not flash, and then the light on the wired product will turn green again and the light on the wireless switch will switch off. The pairing was successful.

**4 To pair a wireless switch with a connected power outlet**



- (A) Press on the wireless switch you wish to pair, while tapping it three times onto the roller shutter switch you wish to control.
- (B) The indicator lights on the two products will flash blue rapidly.
- (C) The indicator lights on the two products will briefly turn blue and not flash, and then the light on the wired product will turn green again and the light on the wireless switch will switch off. The pairing was successful.

**Multiple pairing**

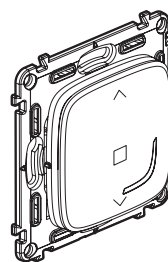
You can control several roller shutters with the same wireless switch by repeating the operation for each product that you want to control.

13

**9 Pair the wireless switches to control the connected switches and connected power outlets (cont.):**

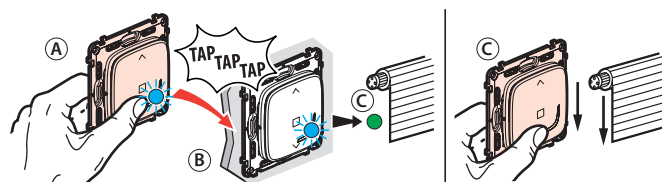
**!** Make sure that the indicator lights on the wired products are green and not flashing. If not, go back to step 8.

**1 How to add a wireless roller shutter switch ?**



**!** Only use roller shutters wireless switches (not included in this pack)

**2 To pair a wireless switch with one or more connected roller shutter switch**



- (A) Keep pressing the button on the wireless switch and tap the roller shutter switch you want to control 3 times with this control.
- (B) The indicator lights on the two products will flash blue rapidly.
- (C) The indicator lights on the two products will briefly turn blue and not flash, and then the light on the wired product will turn green again and the light on the wireless switch will switch off. The pairing was successful.

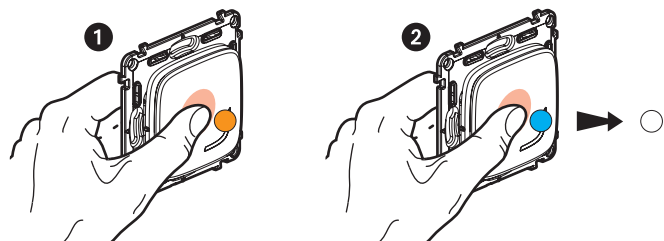
**Multiple pairing**

You can control several roller shutters with the same wireless switch by repeating the operation for each product that you want to control.

14

**If necessary, cancel the wireless switch pairing**

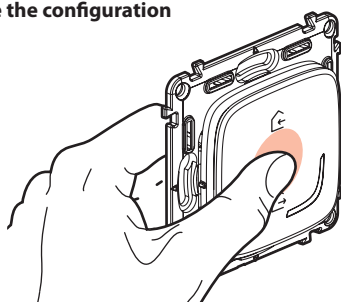
- 1 Press the middle of the button on the wireless switch until the indicator light turns orange without flashing.
- 2 Confirm the cancellation by briefly re-pressing the middle of this button on the wireless switch and the light will turn blue and then switch off. The pairing has now been cancelled.



You can pair this wireless switch with new products by starting again from step 9.

- 10 Repeat steps 8 and 9 for each wireless switch you wish to install.

**11 Complete the configuration**



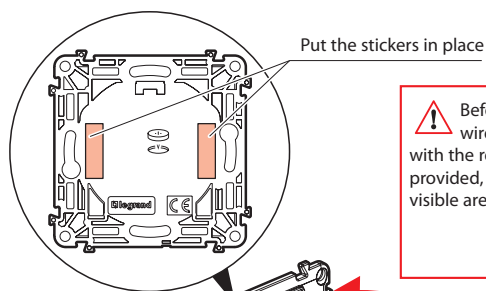
To complete your installation, briefly press the middle of the **wireless master switch**.

**All the indicator lights on the products switch off.**

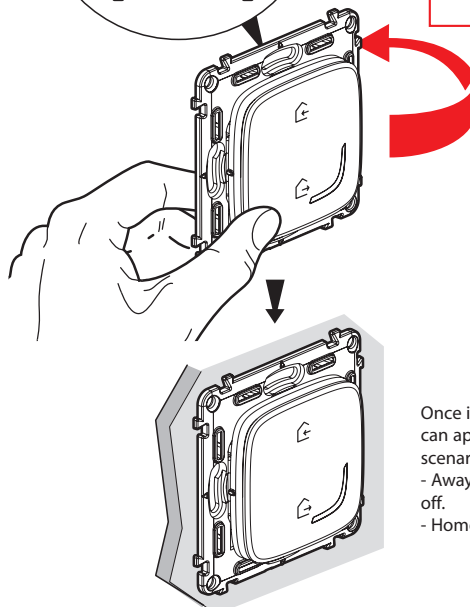
15

**12 Fix the wireless switches on the wall**

Fix the Home/Away wireless master switch near the entrance to the property and fix the other wireless switches where you want.



**!** Before fixing the wireless switch(es) with the removable stickers provided, test one on a non-visible area of the wall.



Once it has been fixed, you can apply predefined living scenarios :  
 - Away : all lights are switched off.  
 - Home : all outlets go to ON.

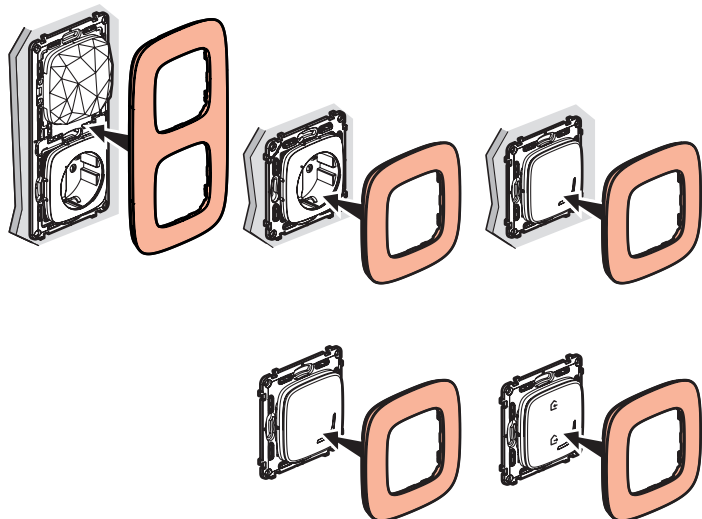
You can also fix the wireless switch(es) permanently to the wall with screws.

16



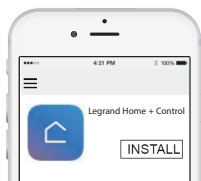
### 13 Install the finishing plates

Install the finishing plates on all of the products installed.



### 14 Download the application

Your installation is ready. You can download the **Legrand Home + Control** application to control your lighting, roller shutters and electrical devices remotely.



17

Your products are compatible with Apple HomeKit technology to control your connected home. This enables you, for example, to control your products with your voice using the Siri voice assistant on your iPhone, iPad, or iPod touch.



**Unique Apple HomeKit installation code to be kept**

Apple HomeKit: When you install the iOS mobile application, you will be asked for this code.

### HomeKit (by using the Home application)

Controlling this HomeKit accessory requires the use of an iPhone, iPad or iPod touch with iOS 9.0 or later. The automatic and remote control of this HomeKit accessory requires an Apple TV with tvOS 10.0 or later or an iPad with iOS 10.0 or later, or a HomePod configured as a hub.

### Legal notice

The use of products bearing the Apple HomeKit label indicates that an electronic accessory was designed to be specifically connected to an iPod, iPhone or iPad, and was certified by the developer to meet Apple performance standards.

Apple is not responsible for whether or not this device functions correctly or complies with safety and regulatory standards. Please note that the use of this accessory with an iPod, iPhone or iPad may affect wireless performance.

iPhone, iPod and iPad are registered trademarks of Apple Inc., and registered in the U.S. and in other countries.

HomeKit is a registered trademark of Apple Inc.

App Store is a service mark of Apple Inc.

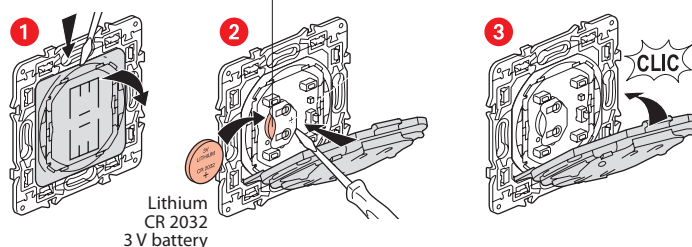
Google, Google Play, Android, and related marks and logos are trademarks of Google LLC.



[www.legrand.fr](http://www.legrand.fr)

LEGRAND - Pro and Consumer Service - BP 30076  
87002 LIMOGES CEDEX FRANCE • [www.legrand.com](http://www.legrand.com)

### Replacing the battery



18

## SIMPLIFIED EU DECLARATION OF CONFORMITY

The undersigned,

**Legrand**

declares that the radio-electric equipment referred to in these instructions complies with directive 2014/53/EU.

The full text of the EU declaration of conformity is available on the following website :

**[www.legrandoc.com](http://www.legrandoc.com)**