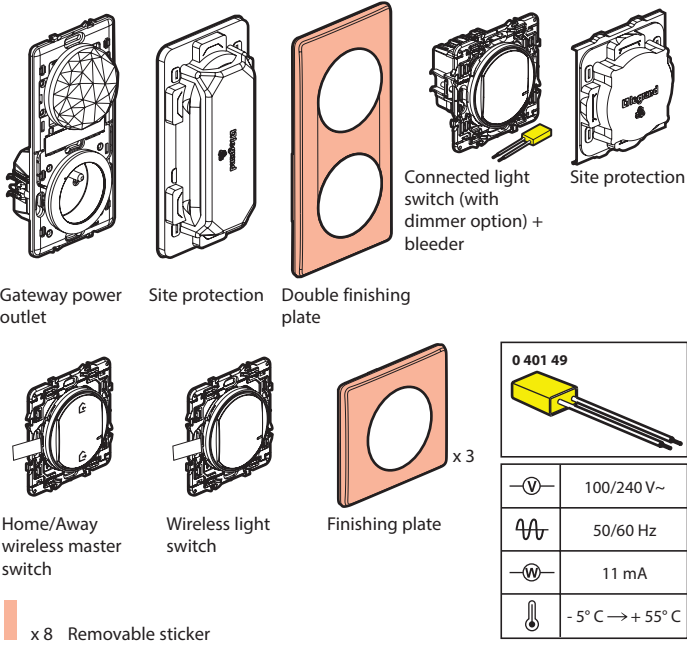


This pack enables you to create a connected installation in your home. You can complete your installation with Céliane with Netatmo power outlets, switches, lighting micromodules and wireless switches sold separately.

Pack contents



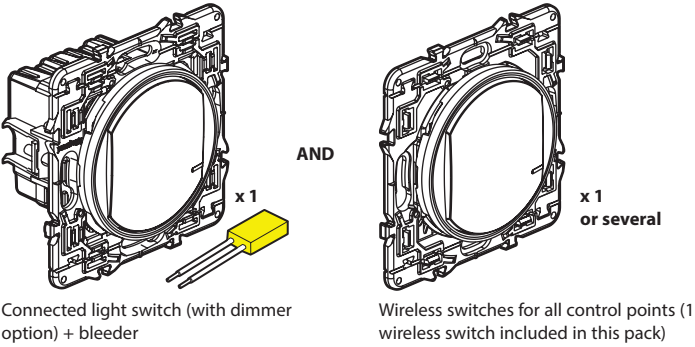
Safety instructions
This product should be installed in compliance with installation rules, preferably by a qualified electrician. Incorrect installation and/or incorrect use can lead to risk of electric shock or fire. Before carrying out the installation, read the instructions and take account of the product's specific mounting location. Do not open up, dismantle, alter or modify the device except where specifically required to do so by the instructions. All **Legrand** products must be opened and repaired exclusively by personnel trained and approved by **Legrand**. Any unauthorised opening or repair completely cancels all liabilities and the rights to replacement and guarantees. Use only **Legrand** brand accessories.

LE10383AA

Before you start: wiring precautions

If you plan to install two-way light switches or switched power outlet, read the following precautions:

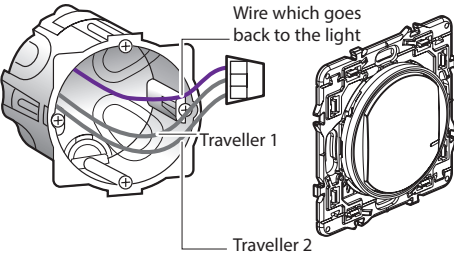
To control a light with **two or more switches**, only use the following products:



Do not use: two connected light switches (with dimmer option) + bleeder to control the same lighting point.

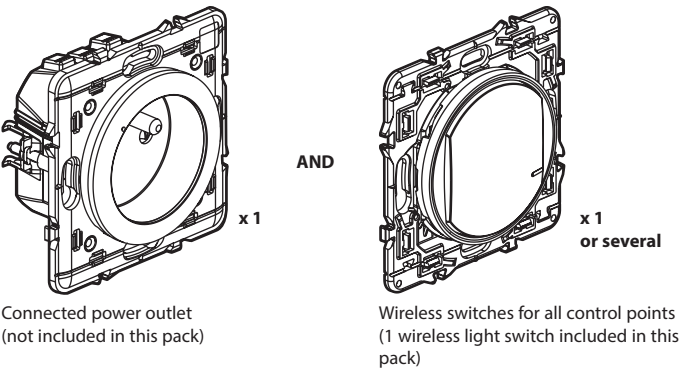
Tip if replacing a two-way switch:
old flush-mounted switch replaced by the wireless switch.

Use a **connector** to connect all three wires (traveller wires 1 and 2 and the one which goes back to the light).



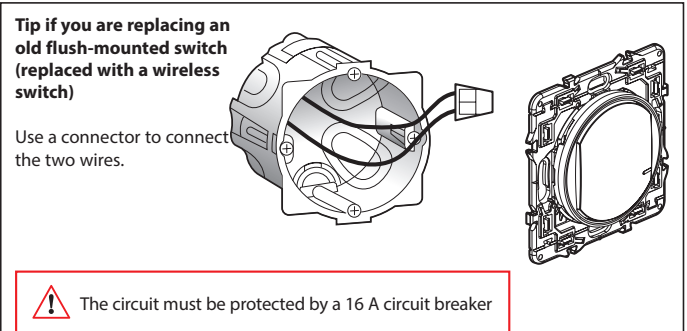
Before you start: wiring precautions (cont.)

To control a power outlet, only use the following products:



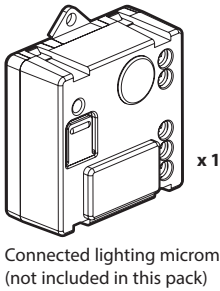
Do not use: a connected light switch (with dimmer option) + bleeder to control a connected power outlet or a traditional power outlet.

If you are replacing switched power outlet:



Before you start: wiring precautions (cont.)

To replace a remote switch, only use the following product:

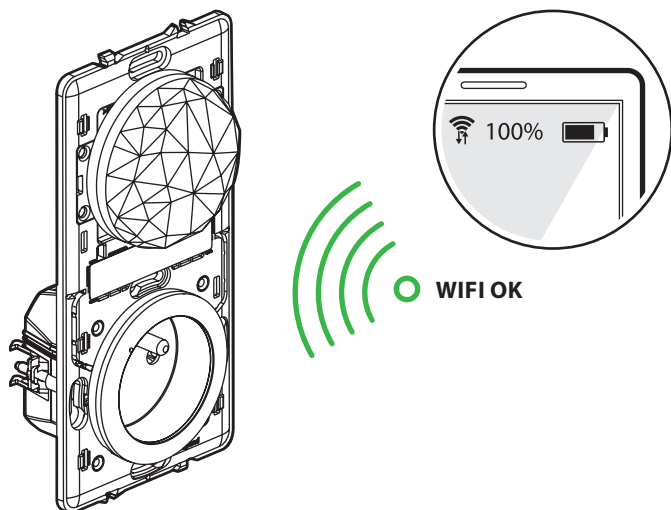


You can keep the existing push buttons or replace them with wireless switches.

Do not use: a connected light switch (with dimmer option) + bleeder to control a connected lighting micromodule.

1 Step by step installation

Choose a place to put the gateway power outlet, where a standard power outlet is located:



- 1 If there is an Internet router in the home, use a smartphone to check if the Wi-Fi signal is strong enough in the chosen place.
- 2 If there isn't a router yet, choose a place near a fibre or power outlet which will be used for the router.
- 3 Install the **gateway power** outlet where the selected standard power outlet is. This is compatible with standard, 40mm-deep flush-mounting boxes attached with screws or claws.

5

2 Necessary safety precautions

1



Switch off the power at the main circuit breaker

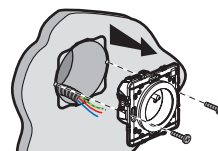
2



Make sure that the power is off before continuing with the installation.

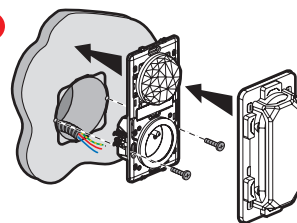
3 Install the gateway power outlet

1



Remove the existing outlet

3



2

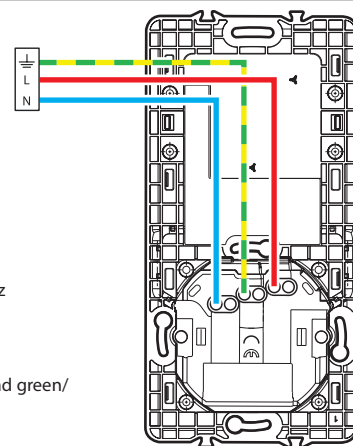
Wire the gateway power outlet

2.5 mm² rigid wire

16 A - 230 V~
3680 W max
cos 0.8

Frequency bands: 2.4 - 2.4835 GHz
Power level: < 100 mW

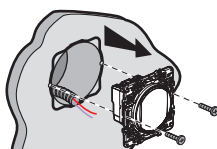
— N (neutral) = blue
— L (live) = any except blue and green/yellow
— ⚬ (earth) = green/yellow



6

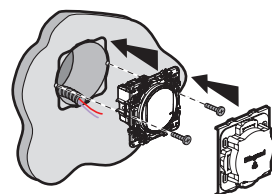
4 Install the connected light switch (with dimmer option)

1



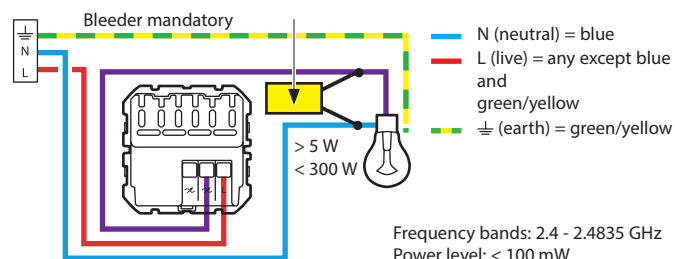
Remove the existing switch

3



2

Wire the connected light switch



To ensure that your connected switch (with dimmer option) works correctly, you **must** wire the **bleeder** provided as close to the load as possible and put a **bulb** in before turning the power on.



The connected light switch (with dimmer option) works with standard bulbs or dimmable bulbs including LEDs over 5 W. Using dimmable LEDs is mandatory for optimal installation results.



If you have wired your bleeder but you are using non-dimmable LED bulbs, it is possible that your bulbs will not go out fully or will flicker. If this is the case, refer to the table of recommended bulbs on the legrand.fr website.

7

4 Install the connected light switch (with dimmer option) (cont.)

In default operating mode (on/off), this switch works with the following bulbs:

Temperature	Power	LED	LED Dimmable	Incandescent	Halogen	Transformer
+45°C +5°C	2 x 2,5 mm ²	LED	LED Dimmable	Incandescent	Halogen	Transformer
100-240 VAC 50/60 Hz	Max. 300 W Min. 7 W	Max. 300 W Min. 7 W	Max. 300 W Min. 7 W	Max. 300 W Min. 7 W	Max. 300 W Min. 7 W	Max. 300 W Min. 7 W
240 VAC	Max. 300 W Min. 7 W	Max. 300 W Min. 7 W	Max. 300 W Min. 7 W	Max. 300 W Min. 7 W	Max. 300 W Min. 7 W	Max. 300 W Min. 7 W
100 VAC	Max. 150 W Min. 7 W	Max. 150 W Min. 7 W	Max. 150 W Min. 7 W	Max. 150 W Min. 7 W	Max. 150 W Min. 7 W	Max. 150 W Min. 7 W

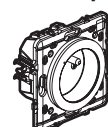
(*) Or 10 lamps max. For comfortable lighting, we recommend using bulbs of the same type and make.

(**) Only use transformers designed to work with electronic switches. Take the losses of the transformers into account in the calculation of the power. The transformers must be charged to more than 60% of their power.

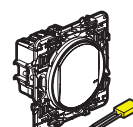
With the dimmer option operating mode (which can be activated in the App), this switch only works with dimmable bulbs (which can be identified by the logo on the packaging).



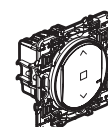
5 Complete your installation with additional products (not included in this pack):



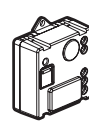
Connected power outlet



Connected light switch (with dimmer option) + bleeder



Connected roller shutter switch



Connected lighting micromodule

Wire the wired products using the individual installation instructions provided in the packaging for each of them.



Wireless light switch



Roller shutter wireless switch



Wake Up/Sleep wireless switch

The wireless switches will be installed later.

8

⑥ Power the wired products



Mandatory installation steps :

1



Switch off the power at the main circuit breaker.

OFF

2



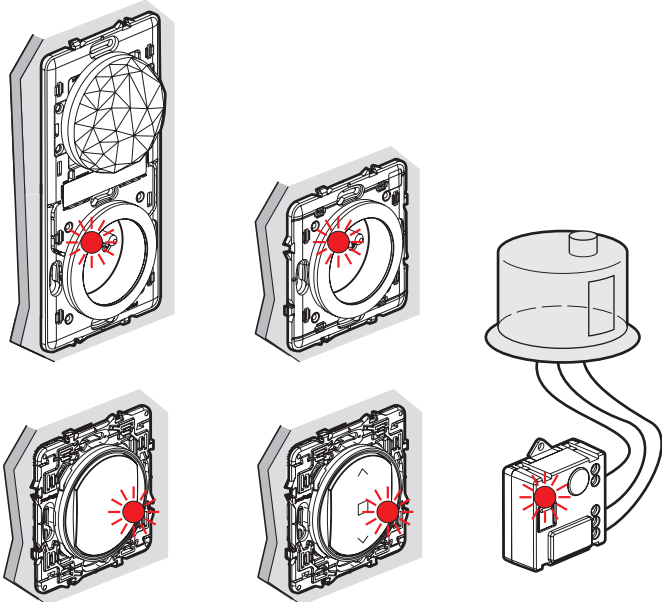
Turn the power back on at the main circuit breaker.

ON

You must power all the wired products simultaneously.

3

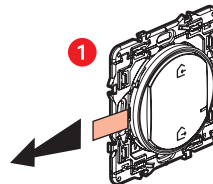
The indicator lights on the products that you have wired turn red.



9

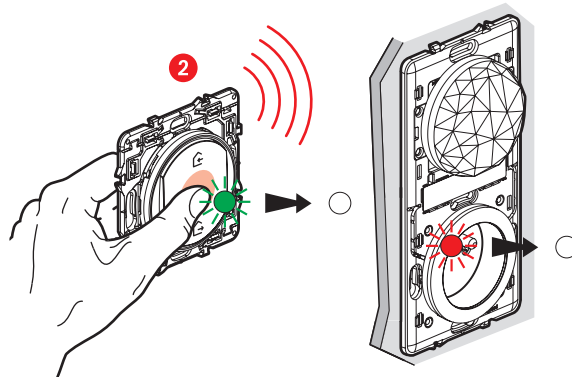
⑦ Power the wireless master switch :

1



Remove the battery's protective strip to power the **wireless master switch**.

2



Press the **wireless master switch** briefly to activate it. The indicator light will flash green and then turn off.

The indicator light on the **gateway power outlet** will also turn off.

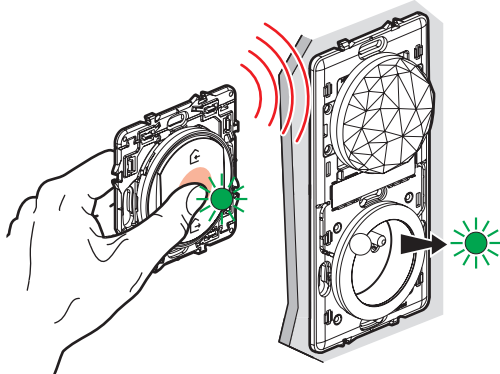
Do not fix the switch to the wall. The installation will be completed in step 13

10

⑧ Start to configure the installed products :

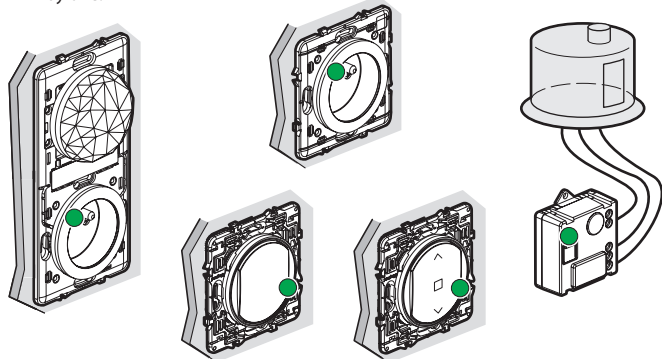
1

Take the **wireless master switch** near to the **gateway power outlet** and press the middle of the switch **until** its light briefly turns green, **and then stop pressing**.



2

The indicator lights on the products which you have wired will turn green one by one.

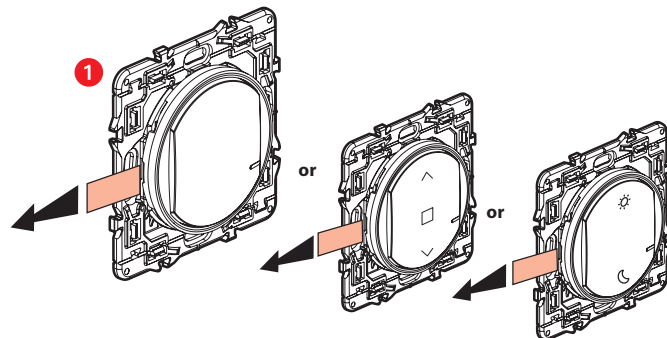


Note : If the lights on some products have not turned green without flashing, go through the steps 6 and 8 again.

11

⑨ Preparing a wireless switch :

1

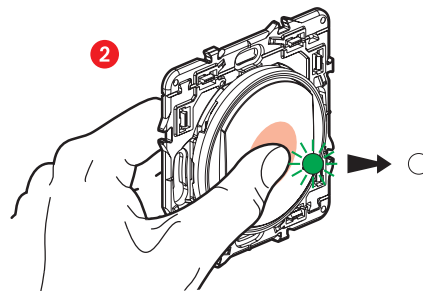


Not included in this pack.

Not included in this pack.

Remove the protective tab from the chosen wireless switch.

2




Press the wireless switch **briefly** to activate it. The indicator light will flash green and then turn off.

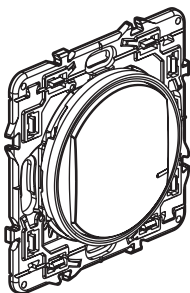
Do not fix the switch on the wall. The installation will be completed in step 13.


12

10 Pair the wireless switch

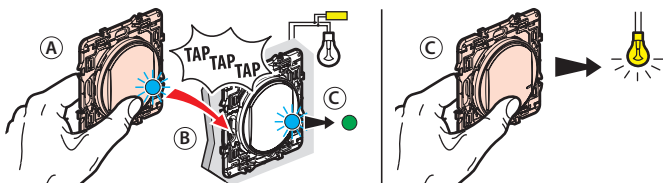
 Make sure that the indicator lights on the wired products are green and not flashing.
If not, go back to step 8.

1 How to pair a wireless light switch.



 This product only controls light switches (with dimmer option), lighting micromodules and connected power outlets.

2 To pair a wireless switch with a connected light switch

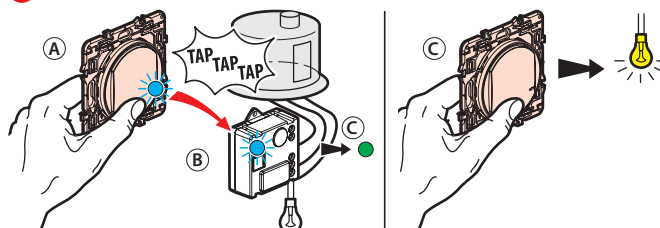


- (A) Press on the wireless switch you wish to pair, while tapping it three times onto the light switch you wish to control.
- (B) The indicator lights on the two products will flash blue rapidly.
- (C) The indicator lights on the two products will briefly turn blue and not flash, and then the light on the wired product will turn green again and the light on the wireless switch will turn off. The pairing was successful.

13

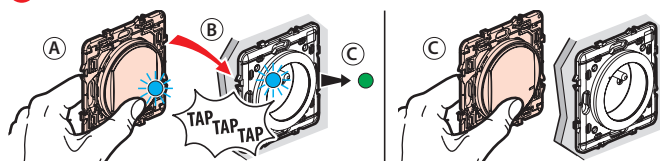
10 Pair the wireless switch (cont.)

3 To pair a wireless switch with a connected lighting micromodule



- (A) Press on the wireless switch you wish to pair, while tapping it three times onto the micromodule you wish to control.
- (B) The indicator lights on the two products will flash blue rapidly.
- (C) The indicator lights on the two products will briefly turn blue and not flash, and then the light on the wired product will turn green again and the light on the wireless switch will turn off. The pairing was successful.

4 To pair a wireless switch with a connected power outlet




- (A) Press on the wireless switch you wish to pair, while tapping it three times onto the power outlet you wish to control.
- (B) The indicator lights on the two products will flash blue rapidly.
- (C) The indicator lights on the two products will briefly turn blue and not flash, and then the light on the wired product will turn green again and the light on the wireless switch will turn off. The pairing was successful.

Multiple pairing

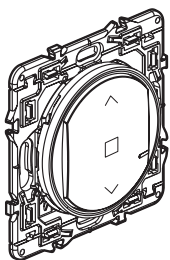
You can control several lights and devices with the same wireless switch by repeating the operation for each product that you want to control.


14

10 Pair the wireless switch (cont.)

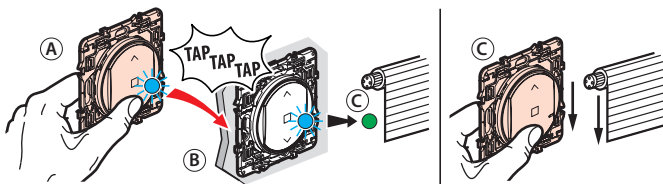
 Make sure that the indicator lights on the wired products are green and not flashing.
If not, go back to step 8.

5 How to add a roller shutter wireless switch.



 This product only controls switches for roller shutters (not included in this pack)

6 To pair a wireless switch with one or more connected roller shutter switches



- (A) Press on the wireless switch you wish to pair, while tapping it three times onto the roller shutter switch you wish to control.
- (B) The indicator lights on the two products will flash blue rapidly.
- (C) The indicator lights on the two products will briefly turn blue and not flash, and then the light on the wired product will turn green again and the light on the wireless switch will turn off. The pairing was successful.

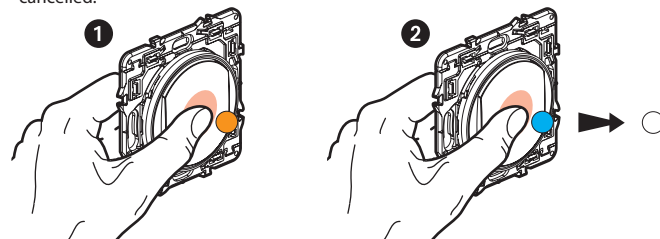
Multiple pairing

You can control several roller shutters with the same wireless switch by repeating the operation for each product that you want to control.

15

If necessary, cancel the wireless switch pairing

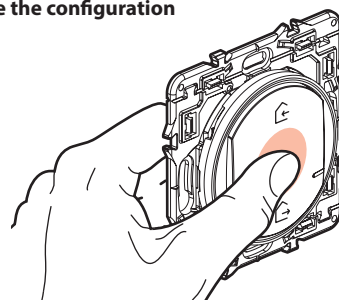
- 1 Press the middle of the button on the control until the indicator light turns orange without flashing.
- 2 Confirm the cancellation by briefly re-pressing the middle of this button on the switch and the light will turn blue and then turn off. The pairing has now been cancelled.



You can pair this wireless switch with new products by starting again from step 10.

11 Repeat the steps 9 and 10 for all the wireless switches you want to install

12 Complete the configuration



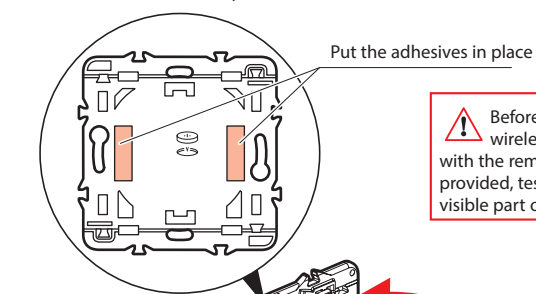
To complete your installation, briefly press the middle of the **wireless master switch**.

All the indicator lights on the products turn off.

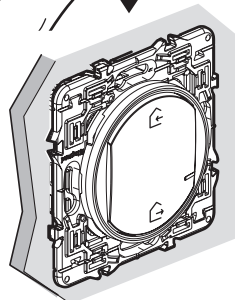
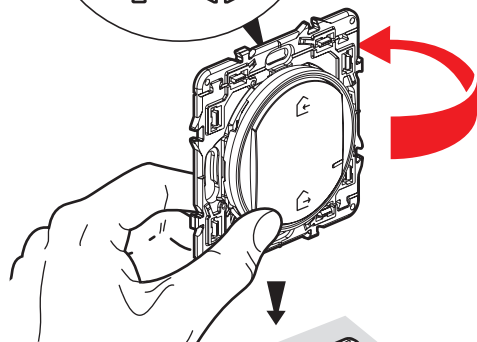
16

13 Fix the wireless switches on the wall

Fix the Home/Away wireless master switch near the entrance to the property and fix the other wireless switches where you want.



! Before fixing the wireless switch(es) with the removable stickers provided, test one on a non-visible part of the wall.



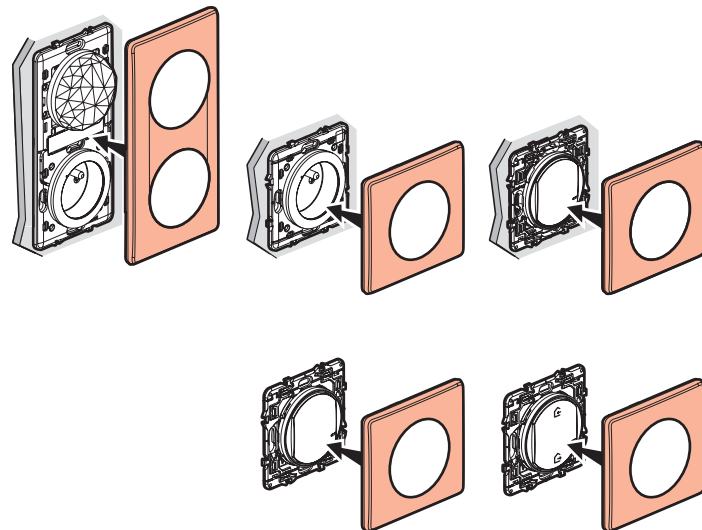
Once fixed on the wall, you can use preset life scenes.
- Departure : all the lights are switched OFF.
- Arrival : all the outlets are switched ON.

You can also fix the wireless switch(es) permanently on the wall with screws.

17

14 Install the finishing plates

Install the finishing plates on all of the products installed.



15 Download the application

Your installation is ready. You can download the **Legrand Home + Control** application to control your lighting, roller shutters and electrical devices remotely.



Download on the
App Store

GET IT ON
Google Play

18

HomeKit (by using the Home application)

Controlling this HomeKit accessory requires the use of an iPhone, iPad or iPod touch with iOS 9.0 or later. The automatic and remote control of this HomeKit accessory requires an Apple TV with tvOS 10.0 or later or an iPad with iOS 10.0 or later, or a HomePod configured as a hub.

Legal notice

The use of products bearing the Apple HomeKit label indicates that an electronic accessory was designed to be specifically connected to an iPod, iPhone or iPad, and was certified by the developer to meet Apple performance standards. Apple is not responsible for whether or not this device functions correctly or complies with safety and regulatory standards. Please note that the use of this accessory with an iPod, iPhone or iPad may affect wireless performance.

iPhone, iPod and iPad are registered trademarks of Apple Inc., and registered in the U.S. and in other countries.

HomeKit is a registered trademark of Apple Inc.

App Store is a service mark of Apple Inc.

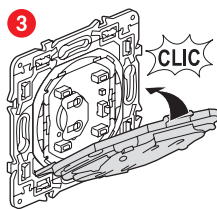
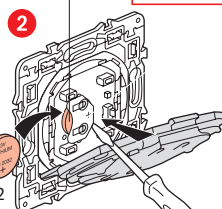
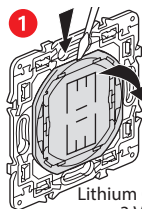
Google, Google Play, Android, and related marks and logos are trademarks of Google LLC.



www.legrand.fr

LEGRAND - Pro and Consumer Service - BP 30076
87002 LIMOGES CEDEX FRANCE • www.legrand.com

Replacing the battery



Lithium CR 2032
3 V battery

19

Your products are compatible with Apple HomeKit technology to control your connected home. This enables you, for example, to control your products with your voice using the Siri personal assistant on your iPhone, iPad, or iPod touch.



Unique Apple HomeKit installation code to be kept

Apple HomeKit: When you install the iOS mobile application, you will be asked for this code.

SIMPLIFIED EU DECLARATION OF CONFORMITY

The undersigned,

Legrand

declares that the radio-electric equipment referred to in these instructions complies with directive 2014/53/EU.

The full text of the EU declaration of conformity is available on the following website :

www.legrandoc.com