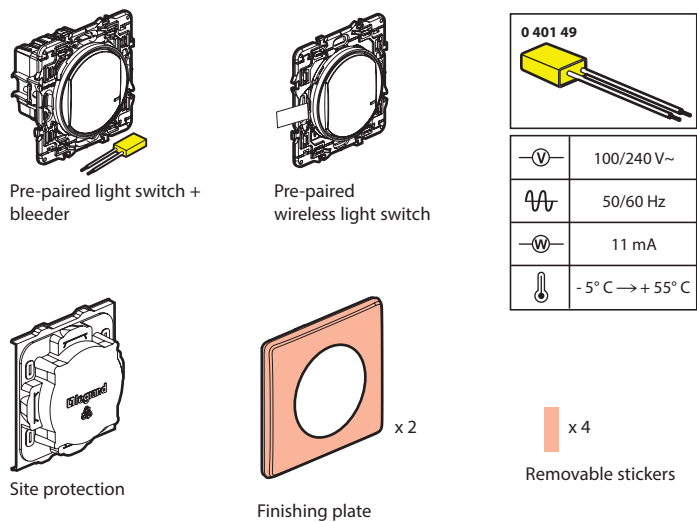


This pack enables you to create a radio-controlled 2-way switch in your home. You can complete this pack with the compatible products in the Céliane with Netatmo range: **power outlets, light switches, lighting micromodules and wireless light switches** sold separately.

**Pack contents**



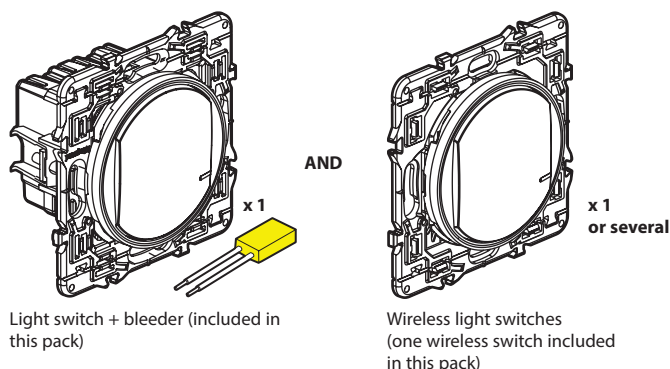
**Safety instructions**

This product should be installed in compliance with installation rules, preferably by a qualified electrician. Incorrect installation and/or incorrect use can lead to risk of electric shock or fire. Before carrying out the installation, read the instructions and take account of the product's specific mounting location. Do not open up, dismantle, alter or modify the device except where specifically required to do so by the instructions. All **Legrand** products must be opened and repaired exclusively by personnel trained and approved by **Legrand**. Any unauthorised opening or repair completely cancels all liabilities and the rights to replacement and guarantees. Use only **Legrand** brand accessories.

LE10370AA

**Before you start: wiring precautions**

To control a light **with two or more switches**, only use the following products:

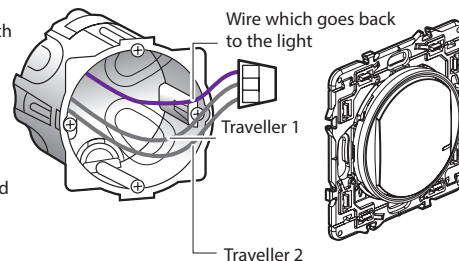


**Do not use:** two light switches from the Céliane with Netatmo range to control the same lighting point.

**Tip if replacing a 2-way switch:**

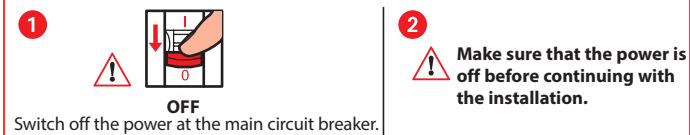
old flush-mounted switch replaced by the wireless switch.

Use a **connector** to connect all 3 wires together (travellers 1 and 2 and lamp return wire).

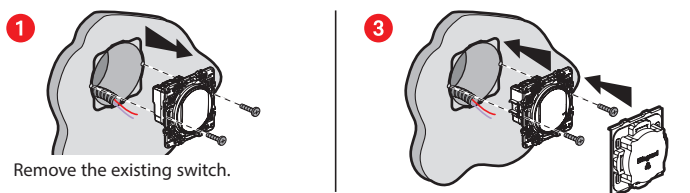


2

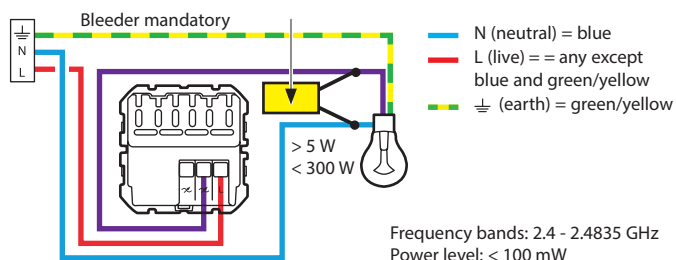
**1 Necessary safety precautions**



**2 Install the switch**



**2 Wire the switch.**



To ensure that your switch works correctly, you **must** wire the **bleeder** provided as close to the load as possible and put a **bulb** in before turning the power on.

**2 Install the switch connected (with dimmer option)(cont.)**

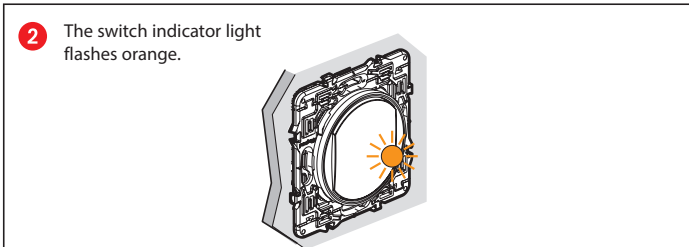
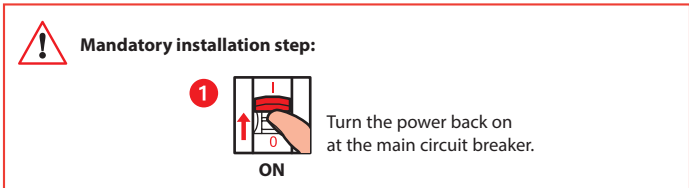
In default mode (on/off), this switch works with the following types of bulb :

Temperature	Area	Incandescent	LED Dimmable	LED Non-Dimmable	Transformer	Transformer
+45°C +5°C	2 x 2,5 mm <sup>2</sup>					
100-240 VAC 50/60 Hz						
240 VAC	Max.	300 W	(*)60 W	60 W	300 VA	300 VA
	Min.	7 W	5 W	9 W	10 VA	35 VA
100 VAC	Max.	150 W	(*)30 W	30 W	150 VA	150 VA
	Min.	7 W	5 W	9 W	10 VA	35 VA

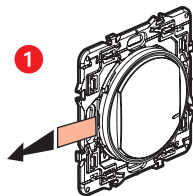
(\*) Or 10 bulbs max. For comfortable lighting, we recommend using bulbs of the same type and make.

(\*\*) Using only transformers intended for operation with electronic switches. Take account of transformer losses for power calculations. Transformers should be charged to over 60% of their rated power.

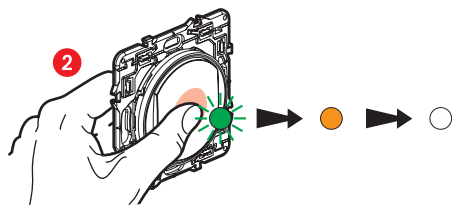
**3 Connect the switch to the power supply**



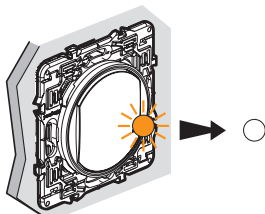
#### 4 Install the wireless switch included in this pack



Take the wireless switch **included in this pack**.  
Remove the protective strip from the battery to power up the switch.



Press the wireless switch **briefly** to activate it. The indicator light will flash green and then turn permanently orange, then switch off.



The indicator light on the **wired switch** supplied in the pack goes off.

**The 2-way switch is now functional.**

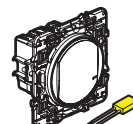
5

If you want to add one or more wireless switches, go straight to step 8.

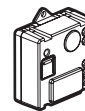
#### 5 You want to add one or more wired products



Power outlet



Light switch + bleeder



Lighting micromodule

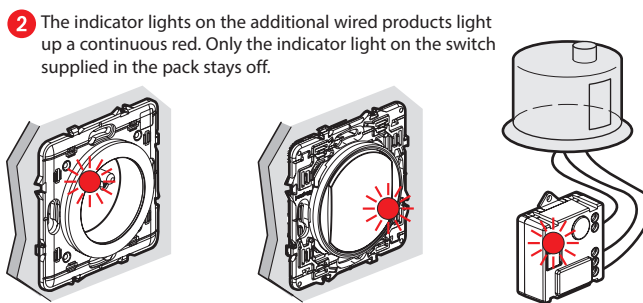
Wire the wired products using the individual user instructions provided in the packaging for each of them.

#### 6 Power the wired products



Turn the power back on at the main circuit breaker.

**You must power all the wired products simultaneously.**

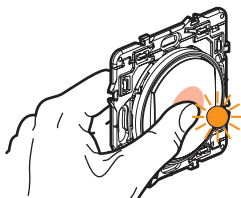


**2** The indicator lights on the additional wired products light up a continuous red. Only the indicator light on the switch supplied in the pack stays off.

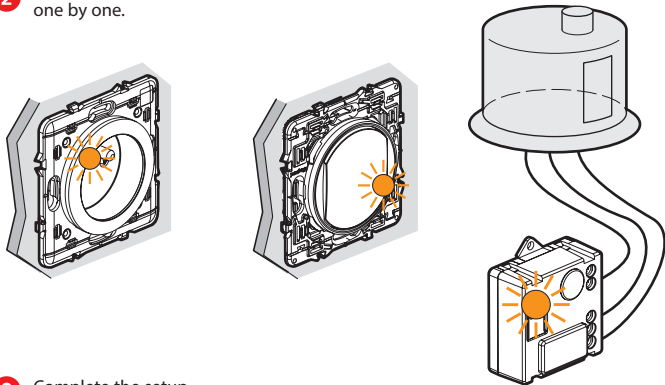
6

#### 7 Start setting up the additional wired products

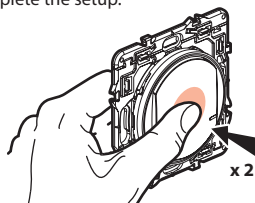
**1** Press the button of the wireless switch already installed (it is included in the initial pack) in the centre, until its light briefly shines orange, **then release**.



**2** The indicator lights on all the products you have wired turn permanently orange one by one.



**3** Complete the setup.



**Briefly press the centre of one of the wireless switches twice.**  
x 2

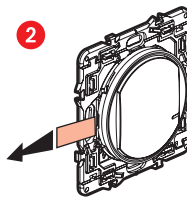
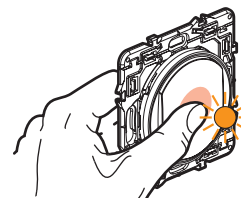
**All the indicator lights on the products switch off.**

**The centralised control system is now functional. Any one of your wireless switches now controls all your wired products.**

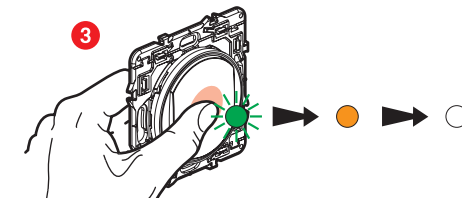
7

#### 8 Install any additional wireless switches:

**1** Press the button of the wireless switch already installed (it is included in the initial pack) in the centre, until its light briefly shines orange, **then release**.

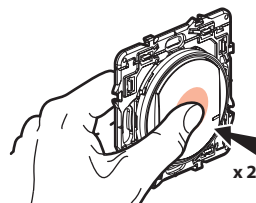


Remove the protective strips from each of the wireless switches.



**Briefly press each of the wireless switches to activate them.** The indicator lights will flash green then light up permanently orange and then switch off.

**4** Complete the setup.



**Briefly press the centre of one of the wireless switches twice.**  
x 2

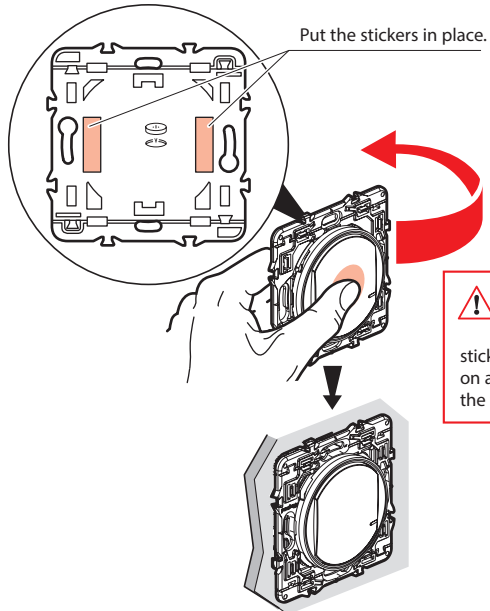
**All the indicator lights on the products switch off.**

**The centralised control system is now functional. Any one of your wireless switches now controls all your wired products.**

8

## 9 Attach the wireless switches

Attach the wireless switch(es) in the required places.

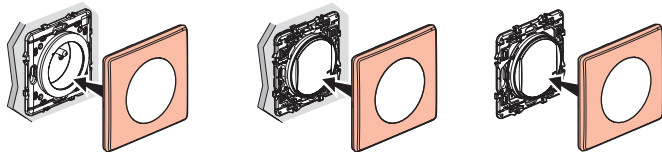


⚠ Before you attach the wireless switch(es) with the removable stickers provided, test one on a non-visible part of the wall.

You can also attach the wireless switch(es) permanently to the wall with screws.

## 10 Install the finishing plates

Install the finishing plates on all of the products installed.



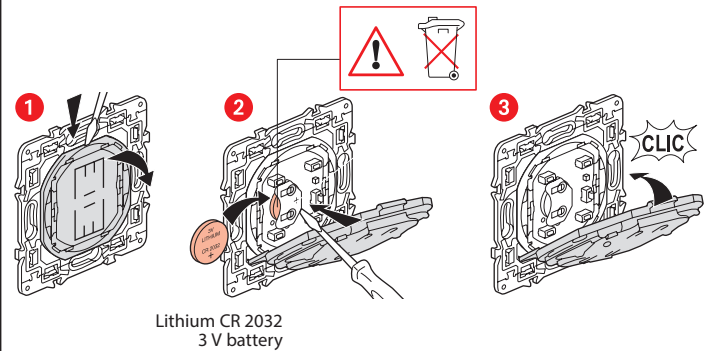
9



[www.legrand.fr](http://www.legrand.fr)

LEGRAND - Pro and Consumer Service - BP 30076  
87002 LIMOGES CEDEX FRANCE • [www.legrand.com](http://www.legrand.com)

## Replacing the battery of a wireless switch



Lithium CR 2032  
3 V battery

## SIMPLIFIED EU DECLARATION OF CONFORMITY

The undersigned,

**Legrand**

declares that the radio-electric equipment referred to in these instructions complies with directive 2014/53/EU. The full text of the EU declaration of conformity is available on the following website:

[www.legrandoc.com](http://www.legrandoc.com)