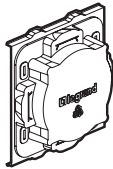
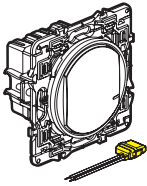


Connected switch (with dimmer option) without neutral
0 648 91A - 0 677 21A - 0 677 71A - 0 777 01LA - 6 000 81A - 6 001 81A



This pack is a connected accessory which **requires** you to buy and install the Céliane with Netatmo connected starter pack first.

Pack contents



Connected switch (with dimmer option) + bleeder

Site protection

Frequency bands: 2.4 - 2.4835 GHz
 Power level: < 100 mW

Characteristics

In default mode (on/off), this switch works with the following types of bulb :

| +45°C +5°C | 2 x 1,5 mm ² 1 x 2,5 mm ² | | (*) LED | | |
|-------------------|--|----------------------------|------------------------------|---------------------------|------------------------------|
| | | | | | |
| 50/60 Hz | | Max. 125 W Min. 5 W | Max. 125 VA Min. 5 VA | Max. 75 W Min. 5 W | Max. 125 VA Min. 5 VA |
| 240 V~ | | | | | |
| 110 V~ | | | | | |

(*) or 10 bulbs max. For comfortable lighting, we recommend using bulbs of the same type and manufacturer.

Product **NOT COMPATIBLE** with ferromagnetic transformer
 Risk of product breaking



In dimmer option operating mode (which can be activated via the App), this switch functions only with dimmable bulbs (identifiable by the logo on packaging).



LE10062AC

The bleeder ref 040149 have to be used systematically to :

-avoid flash ghost effects when the load is OFF.

| | | | |
|------------|----------|------------|--------------|
| | | | |
| 110-240 V~ | 50/60 Hz | 11 mA max. | -5°C → +55°C |

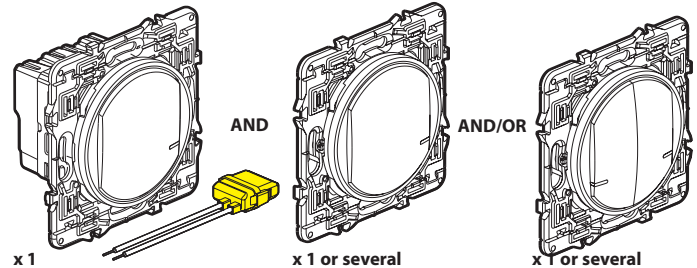


Only one bleeder per circuit

Before starting : wiring precautions

If you plan to install two-way light switches or switched power outlets, read the following precautions:

To control a light with two or more switches, only use the products:



x 1 Connected switch without neutral (with dimmer option) + bleeder

x 1 or several Wireless light switches for all other controls (not included in this pack)



Do not use: two connected switches (with dimmer option) to control the same lighting point.

1

Mandatory safety precautions

1

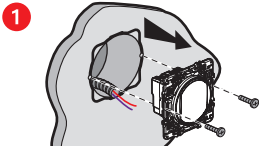


OFF
 OFF Switch off the power at the main circuit breaker

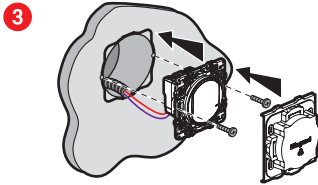
2

Make sure that the power is off before continuing with the installation.

2 Install the connected switch (with dimmer option)

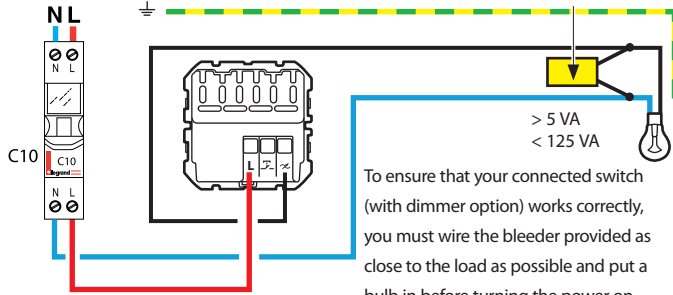


Uninstall the old switch



2 Wire the connected switch

Bleeder (mandatory)



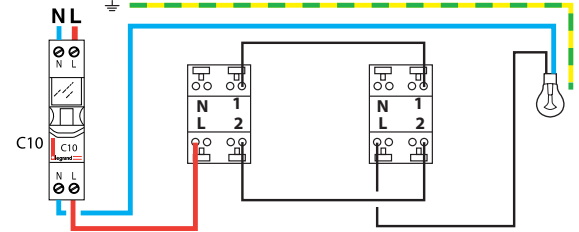
- N (neutral) = blue
- L (Live) = all except blue and green/yellow
- ⊕ Earth = green/yellow



The connected switch (with dimmer option) works with standard bulbs or dimmable bulbs including LEDs over 5 W. Using dimmable LEDs is mandatory when dimmer mode is activated.



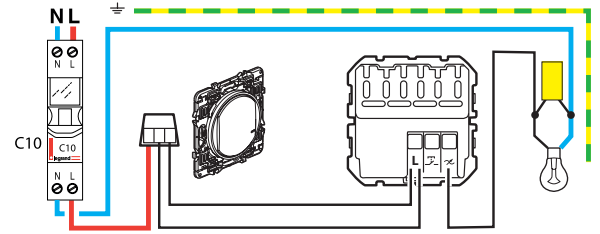
Existing wiring



Replacement of an existing 2-way switch by a connected switch + wireless light switch

Previous switch replaced by the wireless light switch

Wireless switch + wired connected switch

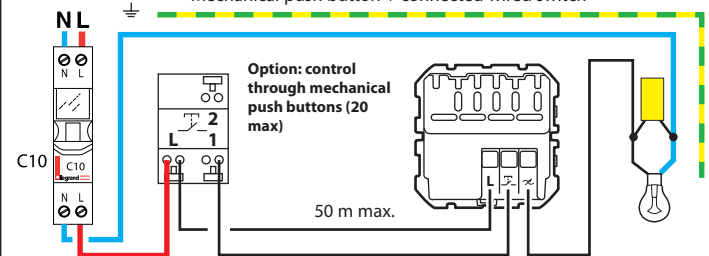


Use a connector to connect all 3 wires together (travellers 1 and 2 and lamp return wire). Use a dedicated connector to insulate the neutral wire (if present)

Replacement of a 2-way switch by a connected switch + mechanical push-button

Previous switch replaced by the mechanical push button

Mechanical push button + connected wired switch




To add a connected product to your connected installation, you should follow the instructions:

- in the **Legrand Home + Control application** (Settings/Add a new product section)
- or consult the user manual on **legrand.com**



www.legrand.fr

LEGRAND - Pro and Consumer Service - BP 30076
87002 LIMOGES CEDEX FRANCE - www.legrand.com

 Safety instructions

This product should be installed in compliance with installation rules, preferably by a qualified electrician. Incorrect installation and/or incorrect use can lead to risk of electric shock or fire. Before carrying out the installation, read the instructions and take account of the product's specific mounting location. Do not open up, dismantle, alter or modify the device except where specifically required to do so by the instructions. All **Legrand** products must be opened and repaired exclusively by personnel trained and approved by **Legrand**. Any unauthorised opening or repair completely cancels all liabilities and the rights to replacement and guarantees. Use only **Legrand** brand accessories.

SIMPLIFIED **EU** DECLARATION OF CONFORMITY

The undersigned,

Legrand

declares that the radio-electric equipment referred to in these instructions complies with directive 2014/53/EU. The full text of the EU declaration of conformity is available on the following website :

www.legrandoc.com