

BTAL40CD  
Nuage  
PRISE TELEVISION

ALTEGE™

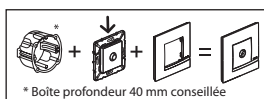
**bticino**

**legrand**®

Pro & Consumer Service  
BP 30076 - 87002 LIMOGES CEDEX FRANCE  
www.legrand.fr

Design & Quality by LEGRAND (France)

Pour fiche TV 9,52 mm  
Compatible qualité UHD (4K)  
Blindage Class A (4G protégé)  
Atténuation < 1 dB



\* Boîte profondeur 40 mm conseillée



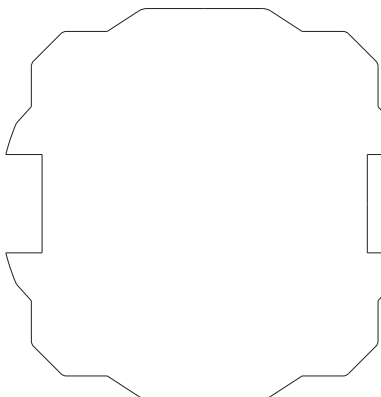
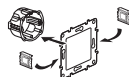
Télévision



Fixation  
à vis

Griffes vendues séparément (Réf. BTAL0001)\*

\* En rénovation : pour fixation du mécanisme dans une boîte sans vis




**2** ans  
GARANTIE

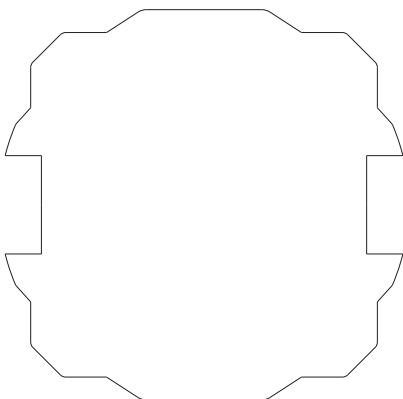


Schéma de câblage  
à l'intérieur

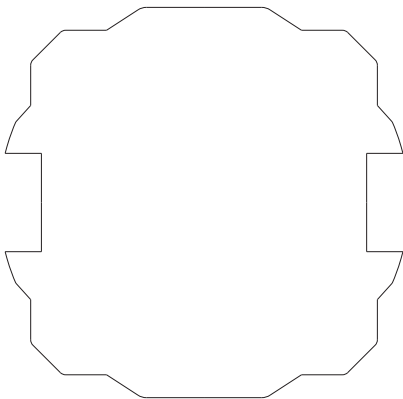
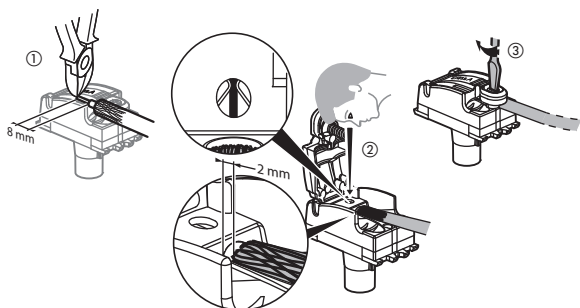
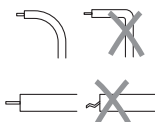
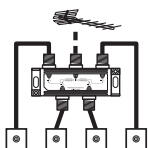
Made in France



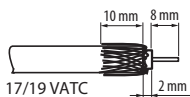
 Respecter strictement les conditions d'installation et d'utilisation.



LED0990AA



Utiliser un câble coaxial  
Ø 5,5 à 7 mm - 75 Ω



17/19 VATC