

- Kit cliver de précision
- Precision cleaver kit
- Kit clivador de precisión
- Kit clivador de precisão

0 322 80

- Präzisionsspalter-Set
- Kablo kesici seti
- прецизионный скалыватель оптоволокна
- مجموعة أدوات التقطيع الدقيق



SC

0 322 72	50 / 125 μm
0 322 74	9 / 125 μm
0 322 75	9 / 125 μm APC

+

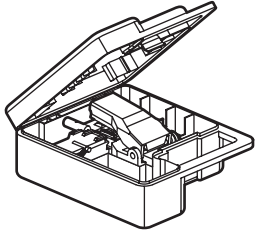
LC

0 322 71	50 / 125 μm
0 322 73	9 / 125 μm

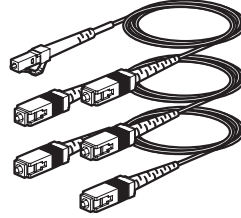
0 322 81/82

9/125 μm
50/125 μm

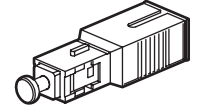
900 μm



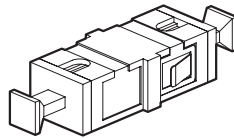
- mallette cliver de précision
- precision cleaver case
- kit para cortar con precisión
- maleta para máquina de clivar de precisão
- Präzisionsspalter-Koffer
- kablo kesici seti
- прецизионный скалыватель оптоволокна
- حقيبة لأدوات التقطيع الدقيق



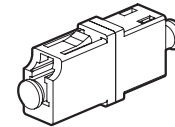
- cordons SC/SC APC - SC/SC - SC/LC
- Patch cords SC APC - SC/SC - SC/LC
- Cables SC APC - SC/SC - SC/LC
- Cabos SC APC - SC/SC - SC/LC
- Przewody SC APC - SC/SC - SC/LC
- Kablo SC APC - SC/SC - SC/LC
- Патч-корд SC APC - SC/SC - SC/LC
- سلکان SC APC - SC/SC - SC/LC



- atténuateur
- attenuator
- atenuador
- atenuador
- Dämpfungsglied
- Zayıflatıcı
- аттенюатор
- مخفف



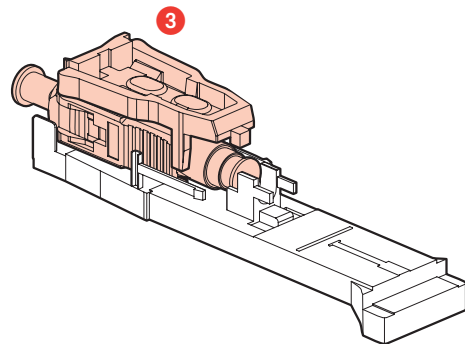
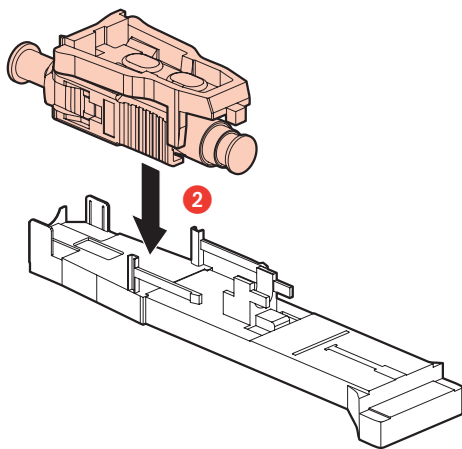
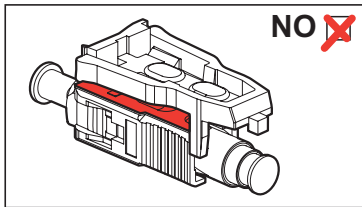
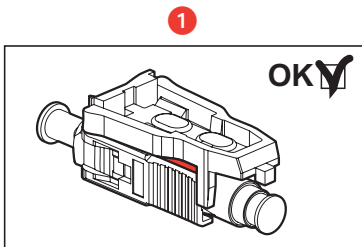
- traversée SC
- SC adapter
- conector SC
- travessia SC
- SC Koppler
- Ek konnektörü SC
- SC-адаптер
- معبر SC



- traversée LC
- LC adapter
- conector LC
- travessia LC
- LC Koppler
- Ek konnektörü LC
- LC-адаптер
- معبر LC

1

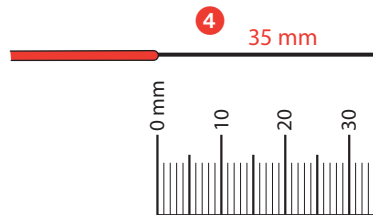
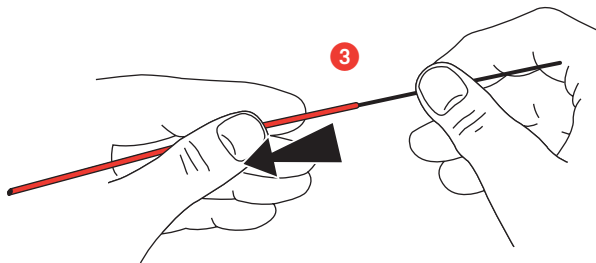
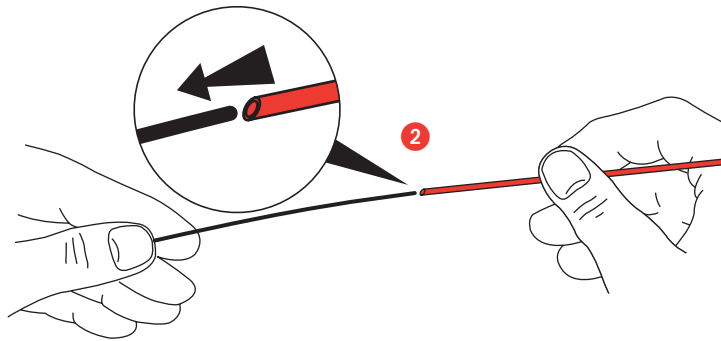
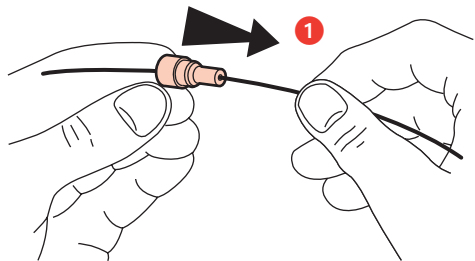
SC APC SC LC



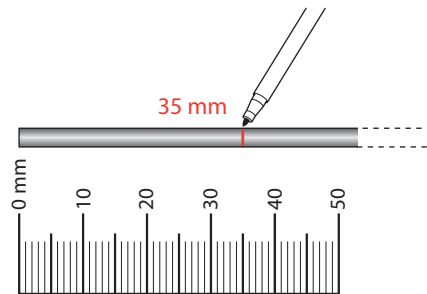
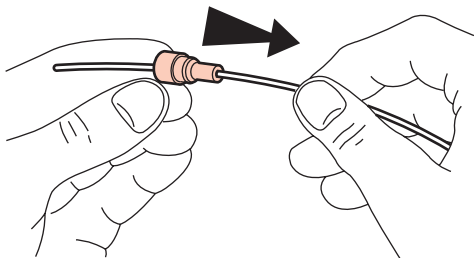
2

SC APC | SC | LC

250 μm



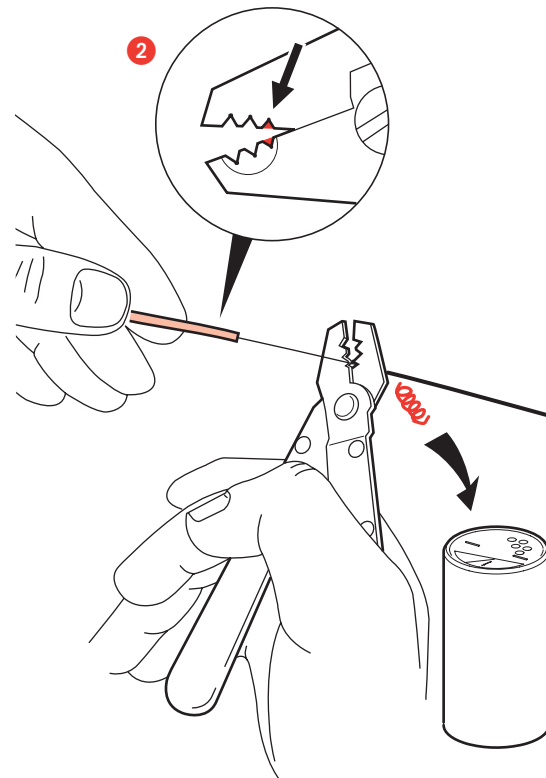
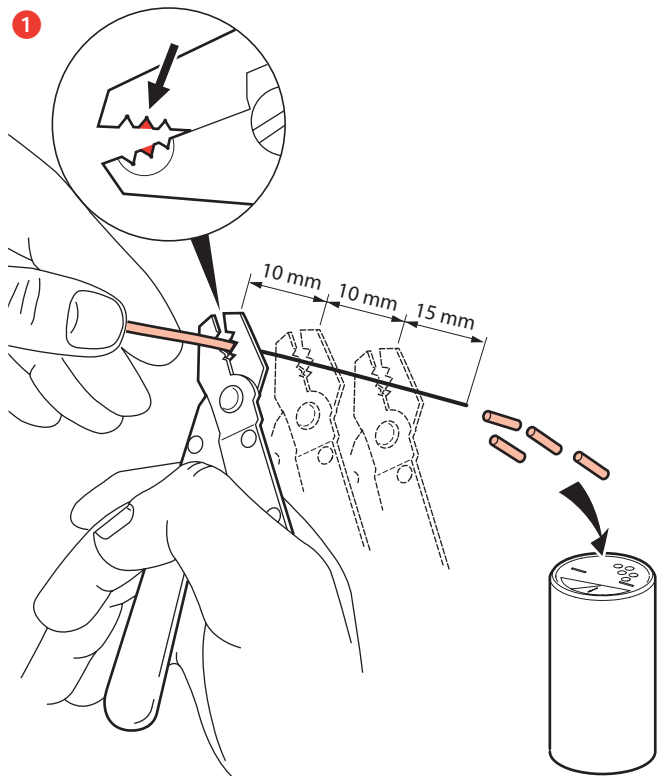
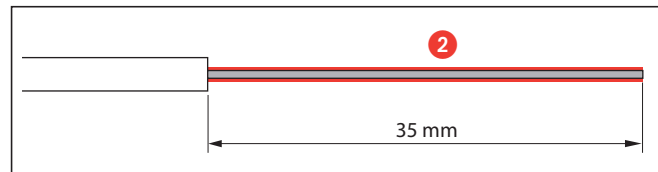
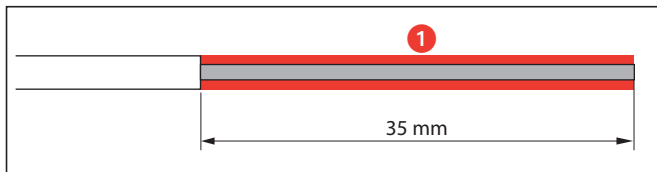
900 μm



3

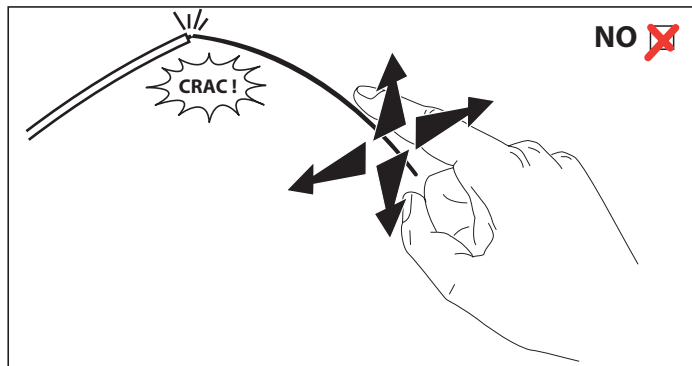
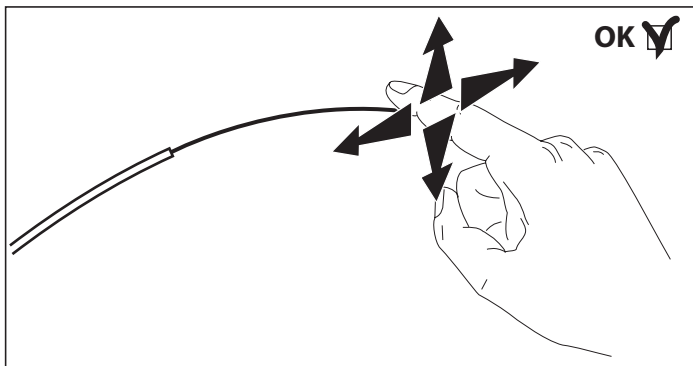
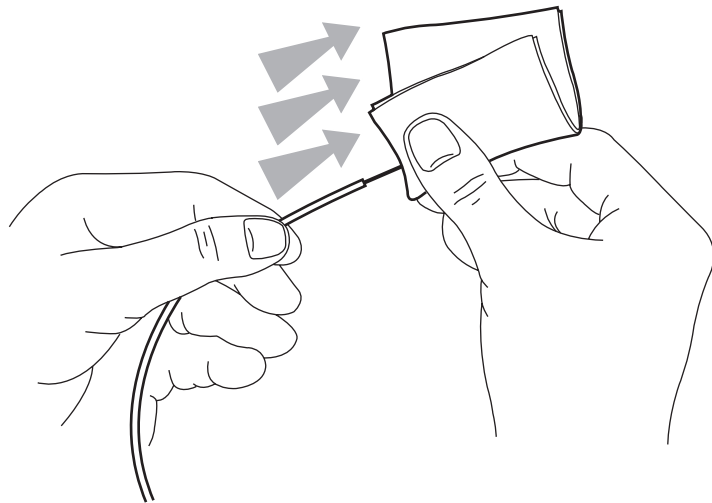
SC APC SC LC

900 μ m



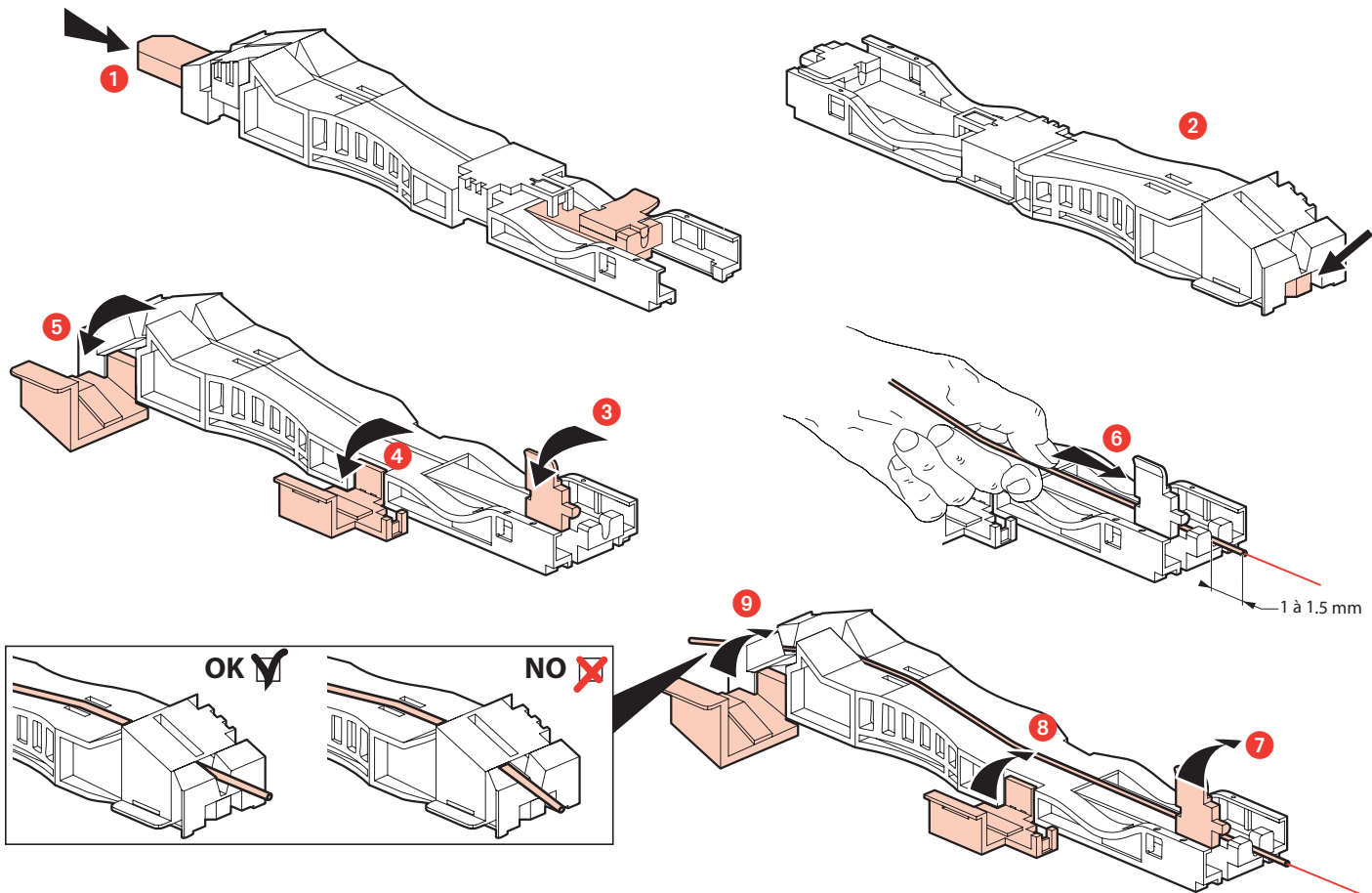
4

SC APC SC LC



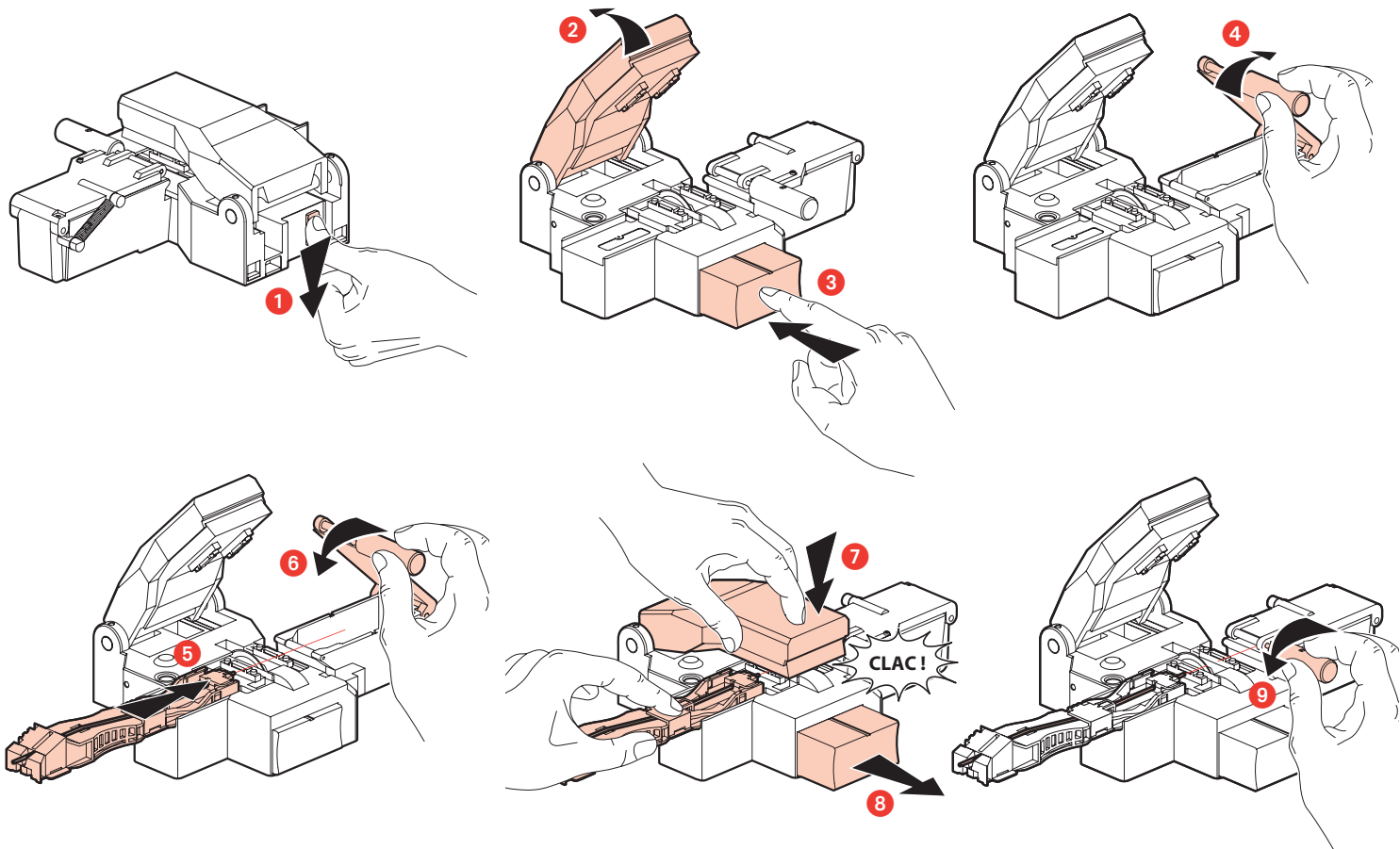
5

SC APC SC LC



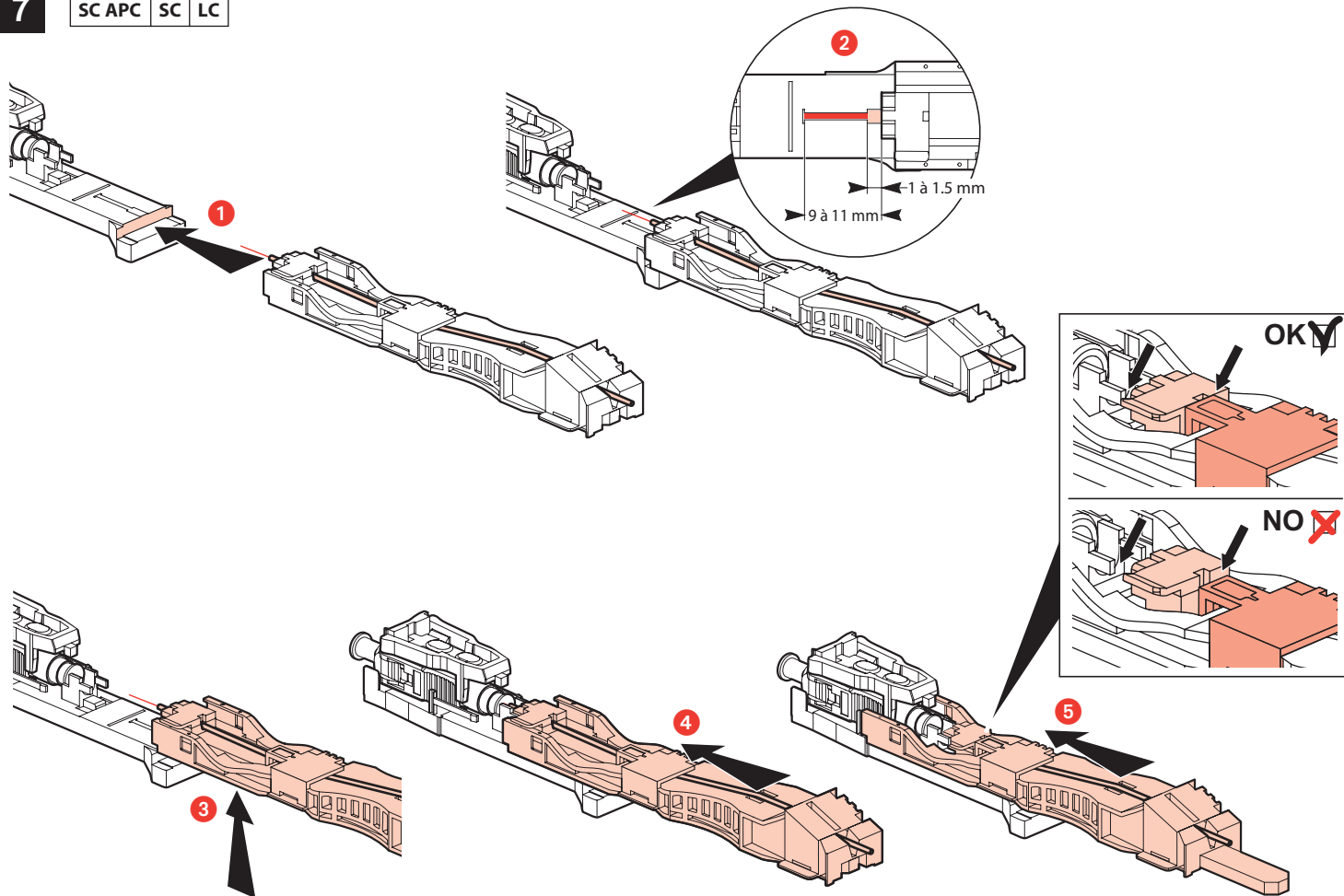
6

SC APC SC LC



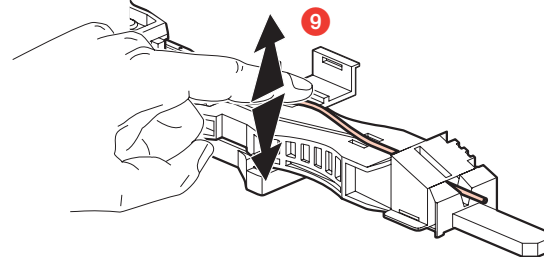
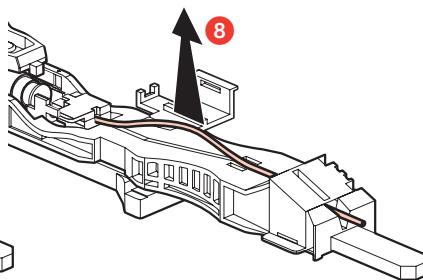
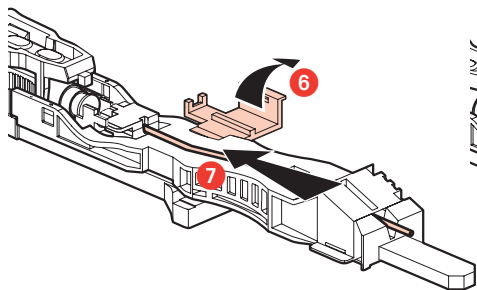
7

SC APC SC LC

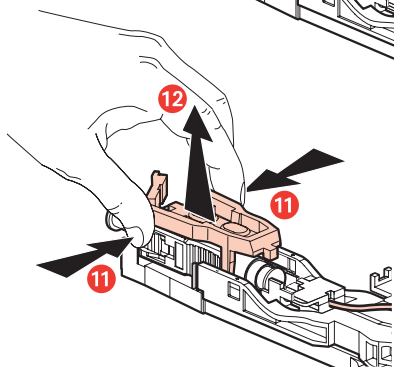
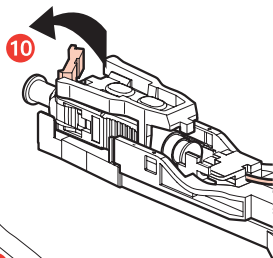


8

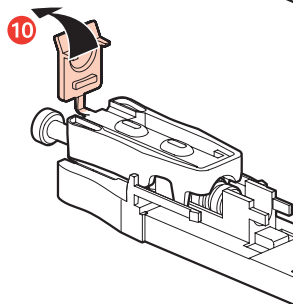
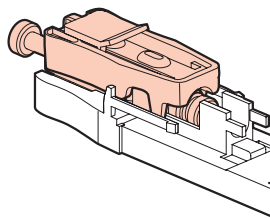
SC APC SC LC



SC

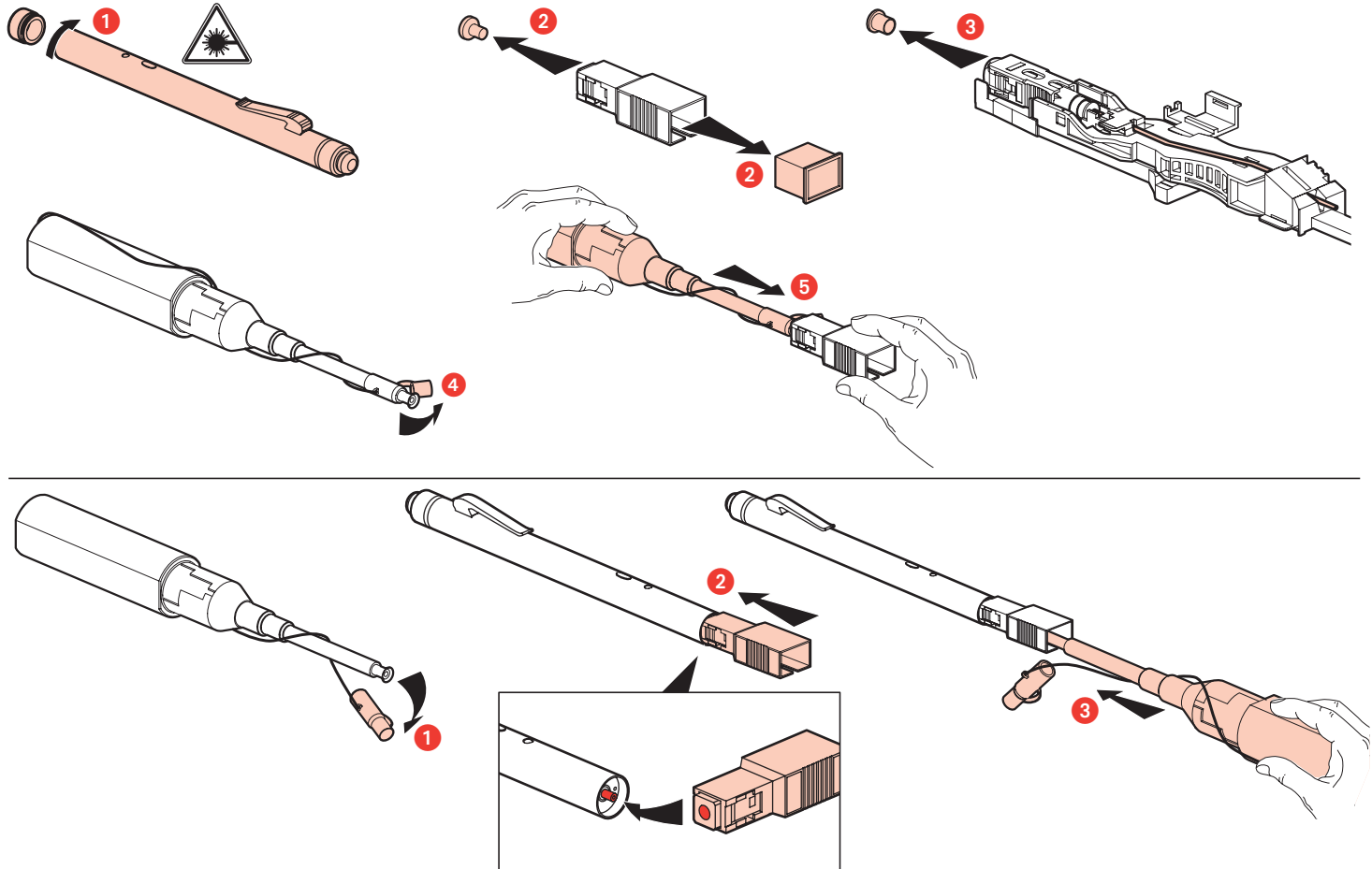


LC



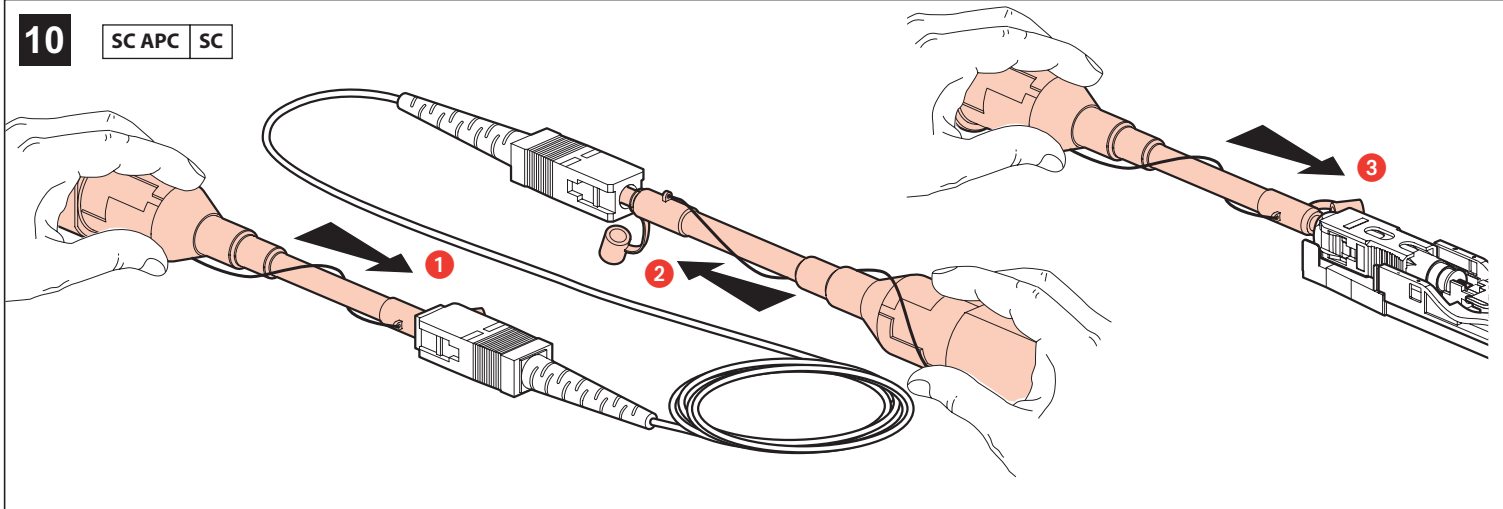
9

SC APC SC LC

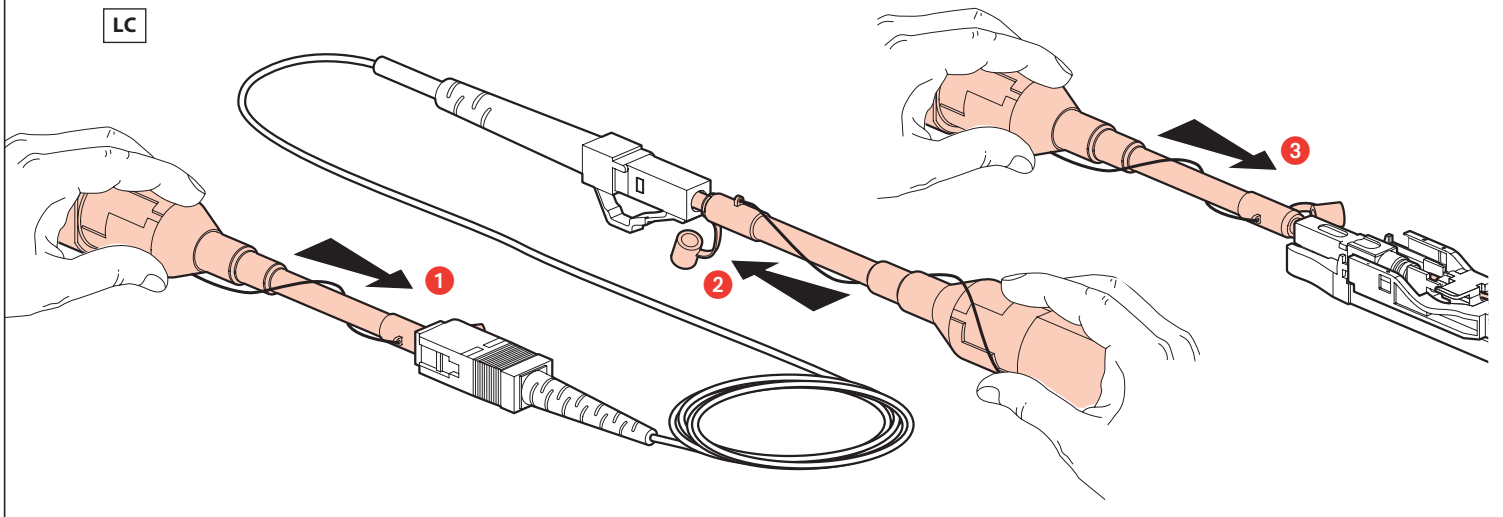


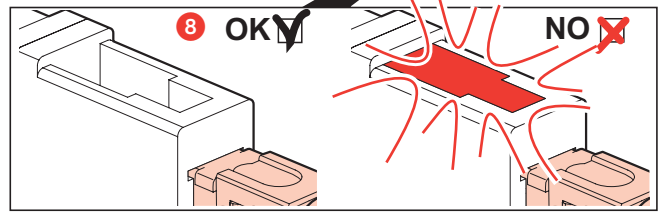
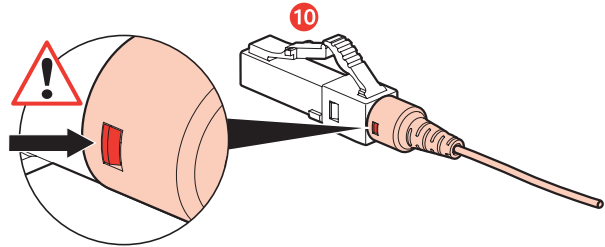
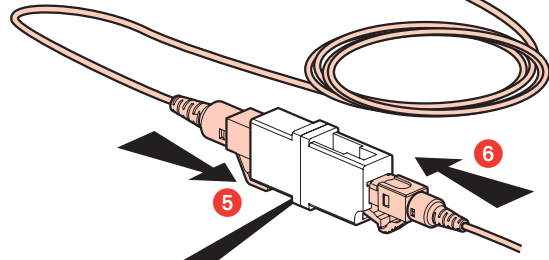
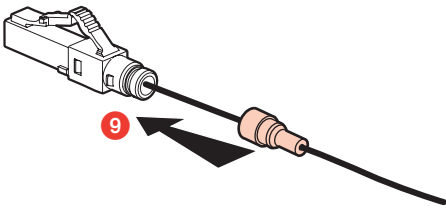
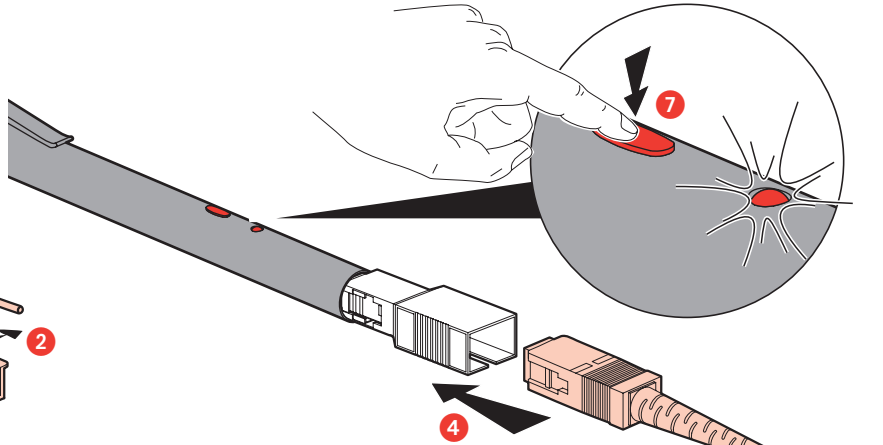
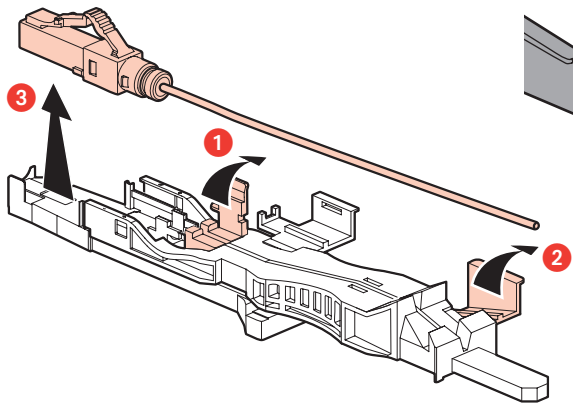
10

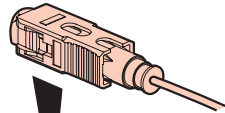
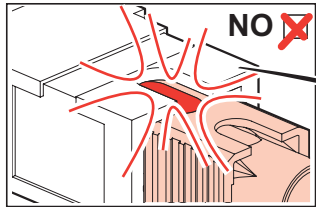
SC APC SC



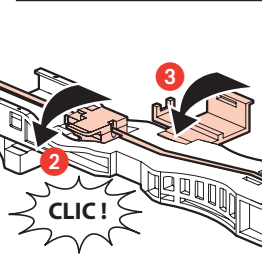
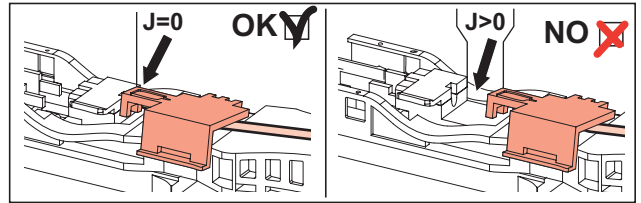
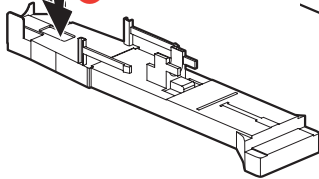
LC



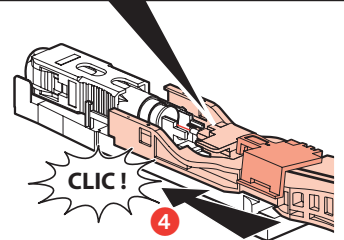




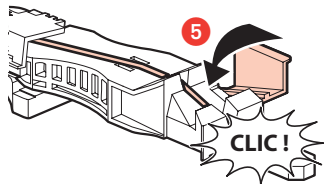
1



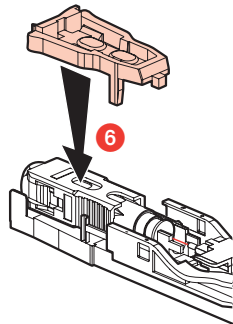
3



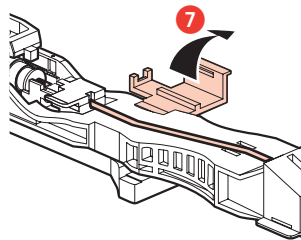
4



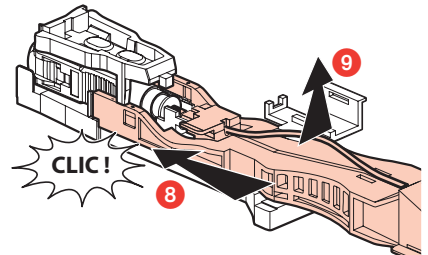
5



6



7



8

9

