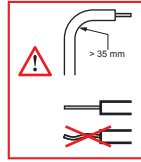
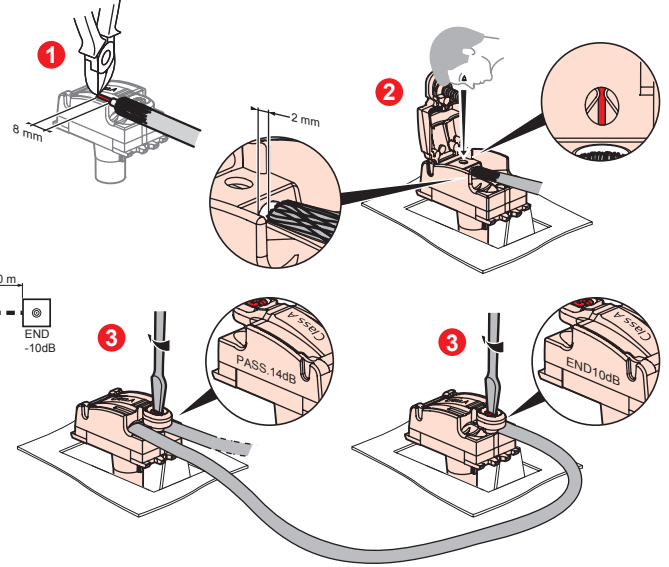
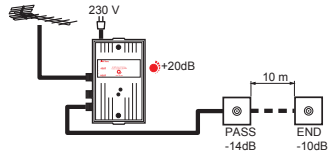
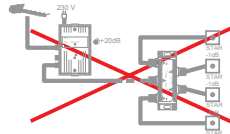
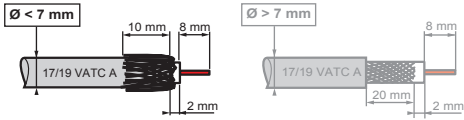


A 7 530 90

			Control	Return Path	Channel 1	Channel FM	Channel VHF	Channel UHF	Channel SAT (IF)
75 Ω	< 1,5 dB	500 mA	22 kHz 0,6 V	4 - 30 MHz	47 - 68 MHz	87,5 - 108 MHz	120 - 470 MHz	470 - 862 MHz	950 - 2400 MHz

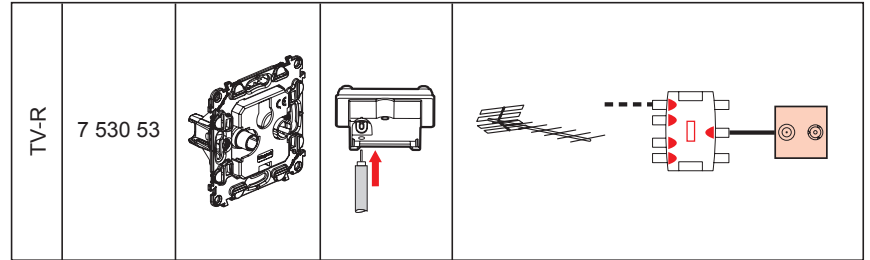
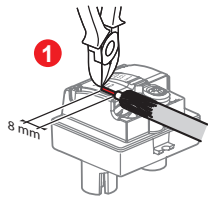
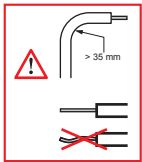
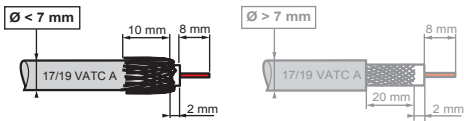
B 7 530 66 / 67



				Control
7 530 66	75 Ω	10 dB	500 mA	—
7 530 67	—	14 dB	—	—

Return Path	Channel 1	Channel FM	Channel VHF	Channel UHF	Channel SAT (IF)
4 - 30 MHz	47 - 68 MHz	87,5 - 108 MHz	120 - 470 MHz	470 - 862 MHz	950 - 2150 MHz

C 7 530 53



		Control	Return Path	Channel 1	Channel FM	Channel VHF	Channel UHF	Channel SAT (IF)
75 Ω	500 mA	22 kHz 0,6 V	4 - 30 MHz	47 - 68 MHz	87,5 - 108 MHz	120 - 470 MHz	470 - 862 MHz	950 - 2400 MHz
7 530 53		-	3 dB				-	-

