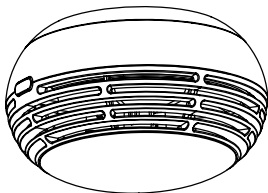


Self-contained smoke detector/alarm

0 405 17



0333-CPR-292050-3

DoP no: 0333-CPR-292050-3

EN14604: 2005 + AC: 2008 - Smoke alarm

Wall or ceiling mounting

 Safety instructions

Detector systems must be installed by fully qualified specialist contractors. Incorrect installation and/or incorrect use may lead to the risk of electric shock or fire. Read the manual and consider exactly where the product is to be fitted before carrying out installation. All Legrand products must only be opened and repaired by trained staff authorised to do so. Any unauthorised opening or repair voids all liability, replacement rights and warranties. Only use Legrand brand accessories.

LE05796AC_en

Self-contained smoke detector/alarm Cat. No. 0 405 17 is a smoke alarm designed for private houses. It detects smoke when a fire breaks out and alerts you with a loud audible alarm.

Please read the following pages carefully before installing and commissioning self-contained smoke detector/alarm Cat. No. 0 405 17.

Caution, self-contained smoke detector/alarm Cat.No. 0 405 17 does not detect heat, gas or flames.

General characteristics	Certifications
<ul style="list-style-type: none"> -> Power supply: non-replaceable Duracell Ultra123* lithium battery -> Battery life: 10 years -> Smoke detection: optical -> Acoustic power: > 85 dB at 3 m -> Battery monitor: audible and illuminated signal in the event of a fault -> Battery test frequency: automatically every 50 sec. -> Fixing: screw and bolt kit supplied for fixing in solid materials -> Protection against false alarms: <ul style="list-style-type: none"> • algorithm managed by micro-controller • insect screen -> Functional check: test button <p>* Air shipment of lithium batteries for personal use is regulated by category UN3090. Find out more on the website http://safetravel.dot.gov.</p>	<p>0333-CPR-292050-3 EN14604:2005 + AC 2008 DoP no: 0333-CPR-292050-3</p> <p>Certification body: AFNOR Certification 11, rue Francis de Préssensé F-93571 La Plaine St-Denis Cedex Tel: +33(0)1 41 62 80 00 Fax: +33(0)1 49 17 90 00 Email: certication@afnor.org www.marque-nf.com www.afnor.org</p>

Contents

	Usage tips	8
Installation recommendations	Test	9
Installation method: ceiling or wall	Care	9
Installation in the kitchen	What to do in the event of a fire	9
Installing and commissioning the smoke alarm	Certifications	10
Alarm override switch	Contact	11
Battery fault postponement	Warranty conditions	11
Decommissioning the smoke alarm	Recycling	11

Technical characteristics

- Dimensions: H 61 mm x Diameter 110 mm
- Weight: 162 g
- Operating temperature: 0 to 55°C
- Interior environment
- White ABS

Installation recommendations

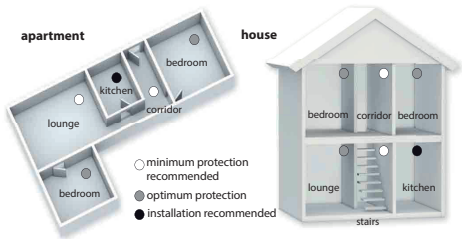
Minimum installation

One detector per floor, ideally in corridors and stairwells. NB: Prioritise areas leading to bedrooms because the risks of smoke inhalation are greater when people are asleep.

Recommended installation

One detector per room. For rooms where false alarms often occur (eg: kitchen, garage, etc), check the installation recommendations. Self-contained smoke detector/alarms should not be installed in bathrooms.

Examples



For installation in the kitchen or garage, please refer to the section entitled Installation recommendations.

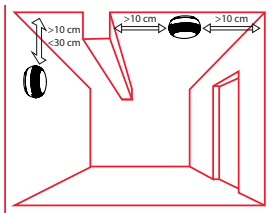
Installation method: ceiling or wall

Example of positioning

Comply with the distances stated below.

Long corridors

In corridors longer than 10 metres, install at least 2 self-contained smoke detector/alarms Cat. No. 0 405 17.



As far as possible, place the detectors at regular intervals, prioritising areas close to bedrooms and stairways.

Installation precautions

Some phenomena can prevent self-contained smoke detector/alarms from working properly:

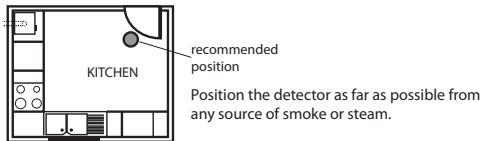
- > Condensation in laundry rooms.
- > Appliances which may produce smoke (cooker hob, oven, vehicle exhaust fumes, etc).
- > Make sure the room containing such appliances is well ventilated.
- > Smoke dilution by ventilation sources (air conditioning, heating, window, other).
- > Dust in attics, lofts, workshops, etc.
- > Abnormally low (<0°) or high (>55°C) ambient temperature.
- > Steam in bathrooms. Self-contained smoke detector/alarms must not be installed in bathrooms because of the risk of false alarms.
- > Vehicle exhaust fumes (in garages): risk of false alarms.

Installation in the kitchen

Installing a self-contained smoke detector/alarm in a kitchen is not recommended because of the significant risk of false alarms and dirt quickly clogging up the detector. Self-contained smoke detector/alarms must definitely not be installed in kitchens smaller than 9 m².

Ensure a minimum distance of 2 metres (for a surface area of 9 m² minimum) from any appliance which produces smoke or steam. In order to prevent nuisance alarms, use the override switch whenever you are using an appliance which produces smoke or steam.

Example of installation in the kitchen:



Installing and commissioning a self-contained smoke detector/alarm

Tools required and prerequisites

Drill with 4 mm bit, screws and bolts provided

Please read the information in this document before starting work.

Installation instructions

Take care when fixing detectors in hollow materials, we recommend using expansion bolts suitable for your particular substrate.

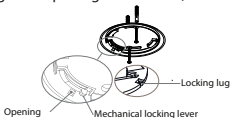
- 1 - Place the base on the ceiling.
- 2 - Turn the Test button to ensure it is visible and accessible.
- 3 - Mark the two holes where the bolts will be installed.
- 4 - Drill the holes and then insert the bolts.
- 5 - Attach the base with both screws.

Anti-theft device

The built-in anti-theft device prevents the detector being stolen (in an apartment block for example).

After breaking off both lugs (see location below), the detector can be locked in position.

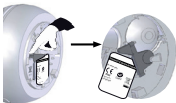
If necessary, you can simply use a small screwdriver to turn the mechanical locking lever through the opening in the base (see illustration below).



Commissioning the smoke alarm battery

1 - Remove the tab by pulling it towards you. After 20 s, the self-contained smoke detector/alarm will be operational (see below on left)

2 - Store the tab in the special slot (see below on right)



When the detector reaches its end of life, you can disconnect the battery using the tab to stop the fault audible signal and prevent any electrical hazards during recycling (see Decommissioning the self-contained smoke detector/alarm paragraph).

Positioning the detector

1 - Place the detector on its base.

2 - Turn clockwise until it locks.

If the test button is not facing the entrance to the room, you can unlock it (turn anti-clockwise) to give the detector a half-turn.

3 - Press the Test button to check it is working.





Alarm override switch

Self-contained smoke detector/alarm Cat. No. 0 405 17 has an alarm override function:

- when the source of the smoke has been identified
- as a preventive measure before smoke is likely to occur

Example: smoke from a toaster, deep fat fryer, cigarette. The override is automatically disabled after 10 min.

The self-contained smoke detector/alarm then reverts to its normal operating mode. This allows you to ventilate the room without setting off the alarm audible signal.

Overriding the alarm with smoke present	Overriding the alarm before smoke is present
 1 - Smoke present: - 1 red flash/1 sec - alarm audible signal	 1 - Before smoke is present: - Smoke alarm in standby state - 1 red flash/50 secs
 2 - Press the Test button, the alarm signal stops.	 2 - Now hold down the Test button for 2 seconds. After the test audible signal, 3 short beeps confirm override mode.

- 3 - The override is active for 10 minutes:
- 1 red flash/7 secs (if smoke present: 1 red flash/2 secs)
The smoke alarm is overridden for 10 min.

Resetting a self-contained smoke detector/alarm which is in override mode
Override mode can be cancelled before the 10 minutes are up.

- | | | |
|---|--|---|
| 1 - Smoke alarm in override mode:
1 red flash/7 secs if smoke present. | 2 - Press the Test button, 2 short beeps cancel override mode. | 3 - Returning the self-contained smoke detector/alarm to standby state:
1 red flash approx. every 50 secs. |
|---|--|---|

Battery fault postponement

Operation

If the battery malfunctions, the smoke alarm beeps approx. every 50 secs. This signal can be postponed temporarily.

Battery fault postponement

- | | | |
|--|--|--|
| 1 - Battery fault indicated:
1 long beep + 1 red flash approx. every 50 secs. | 2 - Press the Test button, 3 short beeps confirm that the battery fault has been postponed for 12 hours. | 3 - 12 hours later:
1 long beep + 1 red flash approx. every 50 secs. Battery fault indicated again. |
|--|--|--|

Decommissioning the self-contained smoke detector/alarm Temporary or for disposal

- 1 - Remove the tab from its slot.
- 2 - Insert the tab between the end of the battery and the metal part.
- 3 - Press the Test button to check it is switched off.

When disposing of them, take your products to an approved recycling centre.

Usage tips

Audible event identification

Audible signalling	Event meaning
5 quick short beeps	Power-up
1 short beep/1 sec	Smoke level detected close to alarm level
2 short beeps in succession	Event acknowledgement (exit override mode)
3 short beeps in succession	Event acknowledgement (activate override mode)

Illuminated event identification

Visual signalling	Event meaning
1 red flash/1 sec	Switch to alarm mode
1 red flash/7 secs	Activation of override mode without any smoke
1 red flash/2 secs	Activation of override mode with smoke present
1 red flash/50 secs	Smoke alarm operating normally

Audible and illuminated event identification

1 red flash + 1 long beep/50 sec: battery fault (main power supply source, see above instructions)

Installing the smoke detector

Installation instruction:s

Tools required



screw
and bolt kit
supplied



S6 5*25 bolts
x2

When fixing detectors in hollow materials, it is advisable to using expansion bolts suitable for your particular substrate.

1 - Place the base on the ceiling



2 - Turn the Test button to ensure it is visible

3 - Mark the two holes where the bolts will be installed



4 - Drill the holes and then insert the bolts

5 - Attach the base with both screws

6 - Place the detector on its base



7 - Turn clockwise until it locks



Certifications

CE marking

The CE marking on this product confirms its compliance with European regulations (EU) no. 305/2011 relating to construction products applicable to it, especially its compliance with the harmonised specifications of standard NF EN 14604: 2005 + AC: 2008

NF mark

The NF mark applied to the self-contained smoke detector/alarm ensures safety and constant quality that is checked by specialists. Through its guaranteed exhaustive checks (contractor's quality management system, production controls, audits and surveillance tests, etc) the customer has the reassurance brought by certified products.

The NF-DAAF mark confirms the product's compliance with the NF292 certification guideline; it is awarded and overseen by AFNOR Certification, 11 rue Francis de Pressenté - 93571 LA PLAINE ST DENIS Cedex.

Essential certified characteristics covered by the NF mark

Type of mounting	Wall only	NO
	Ceiling only	NO
	Wall or ceiling	Yes
Main power supply source	Built into the device	
Battery life	10 years	
Interconnectable device	NO	
Designed for installation in a camper van	Yes	
Connection to external auxiliary devices	NO	
Radio link (to alarm control panel)	NO	
Individual alarm indicator	Yes	
Alarm override switch	Yes	
Accessibility option	NO	

Test

Test button

We recommend that you test operation of your self-contained smoke detector/alarm once a week. Press the Test button briefly (less than 2 secs).



The Test button flashes red and emits an audible alarm.

Use this test to familiarise young children with this audible signal and explain to them what to do if a fire breaks out in your home (see What to do in the event of a fire paragraph). Always perform this test after a long absence.

Test aerosol for self-contained smoke detector/alarm

Optional test

Once or twice a year, you can check that the self-contained smoke detector/alarm is working by using a test aerosol.



Care



A: Remove any dust from the fins with a vacuum cleaner or an antistatic cloth.

B: Clean the detector all over with a sponge or damp cloth. It is essential to keep the detector in a clean environment (without too much dust or cobwebs) so that smoke can penetrate inside the detector.

The detector must not be painted.

What to do in the event of a fire

As soon as you detect a fire, keep calm. Evacuate the premises as quickly as possible and take refuge in a smoke-free area. Lie on the ground so you can breathe.

Call the emergency services.

Legrand
BP30076
F-87002 Limoges Cedex 1
Consumer department: 0825 360 360
www.legrand.fr

KEEP THESE INSTRUCTIONS THROUGHOUT THE PRODUCT'S LIFE

Recycling



This symbol on the product or its packaging means that this product must not be treated as household waste. It must be taken to an appropriate collection point for recycling electrical and electronic equipment.



This symbol on the product, its packaging, or in its instruction manual, means that LEGRAND contributes to paying for the whole selective waste collection and recycling system.

Membership of an eco-organisation: Recylum



This symbol on the product, its packaging, or in its instruction manual, means that this product complies with European directive ROHS 2011/65/EU "Restriction of Hazardous Substances".