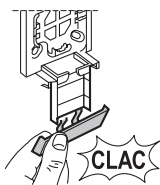
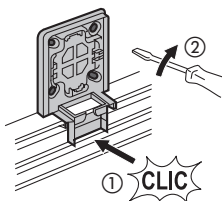


Montage de la platine

1 Détacher l'embout

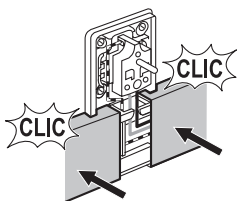


2 Clipser la platine sur la moulure
Fixer la platine sur le mur (vis non fournies)

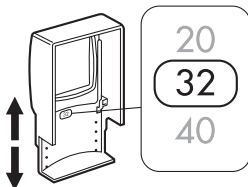


Remontage de la platine

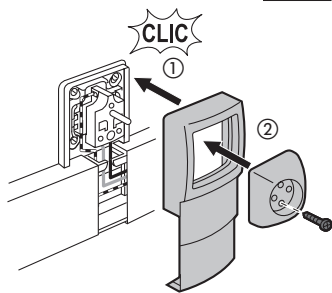
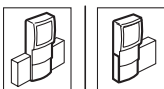
1 Clipser les couvercles en butée sur la platine



2 Repérer la largeur de la moulure

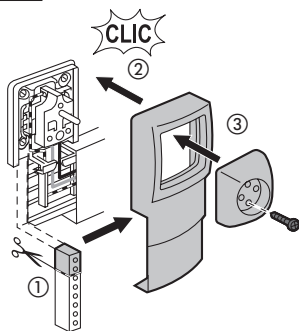


3



Clipser le cadre sur la platine

ou



Positionner l'embout sur les ergots du cadre
Clipser le cadre sur la platine

⚠ Avant toute intervention, couper le courant.
Respecter strictement les conditions d'installation et d'utilisation.

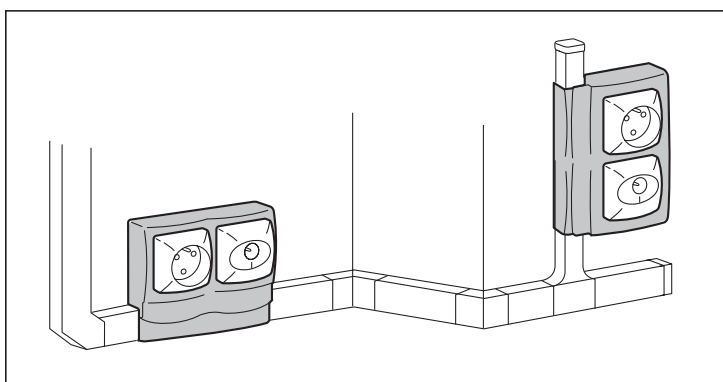
Pro & Consumer Service

BP 30076 / F - 87002 Limoges Cedex 1

FR Service Consommateurs

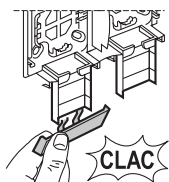
0825 360 360 (0,15 € TTC/min)

www.legrandgroup.com

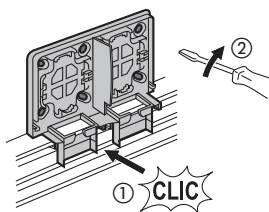


Montage de la platine

1 Détacher l'embout

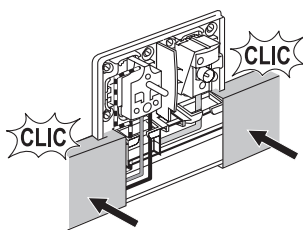


2 Clipser la platine sur la moulure
Fixer la platine sur le mur (vis non fournies)

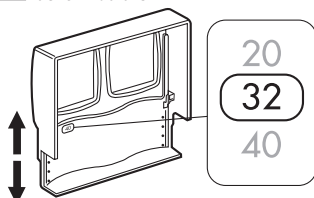


Remontage de la platine

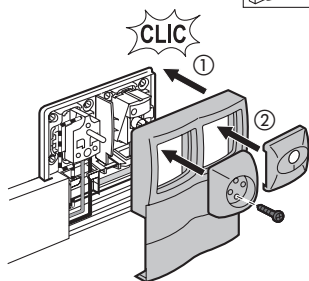
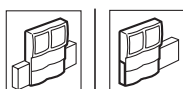
1 Clipser les couvercles en butée sur la platine



2 Repérer la largeur de la moulure

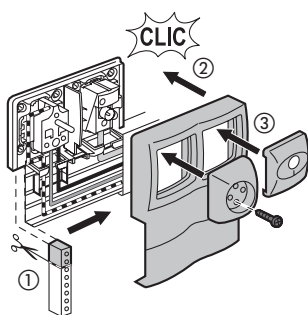


3



Clipser le cadre sur la platine

ou



Positionner l'embout sur les ergots du cadre
Clipser le cadre sur la platine