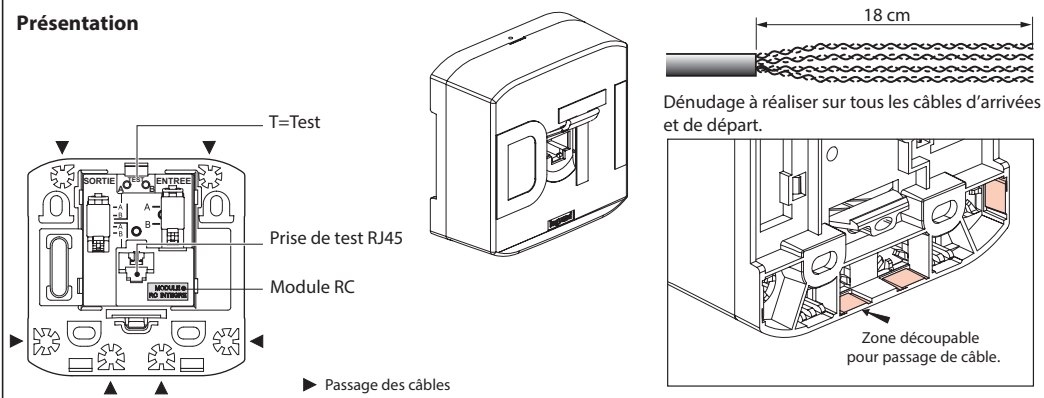
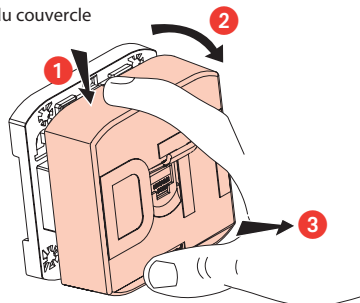


Présentation

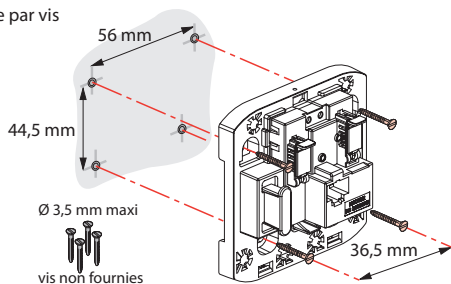


Implantation

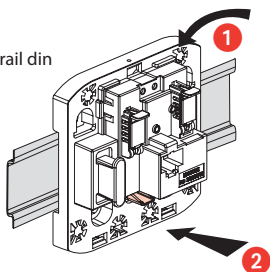
Démontage du couvercle



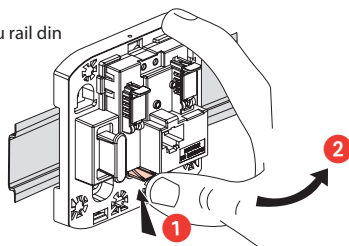
Montage par vis



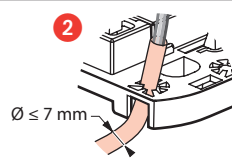
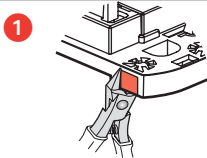
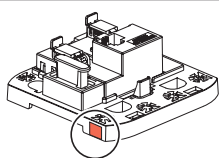
Montage sur rail din



Démontage du rail din



Ø ≤ 7 mm



Ø > 7 mm

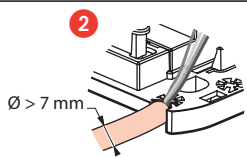
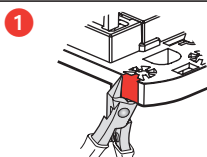
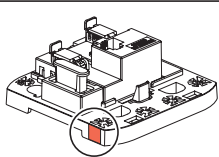
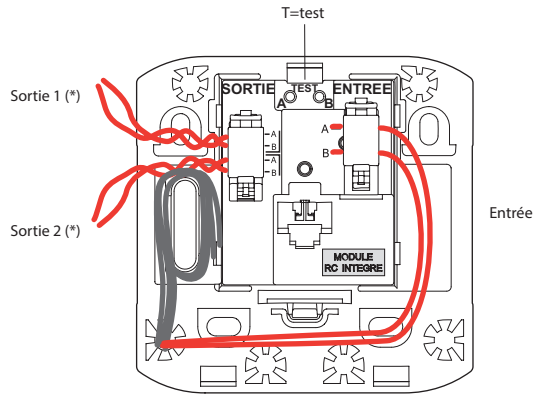
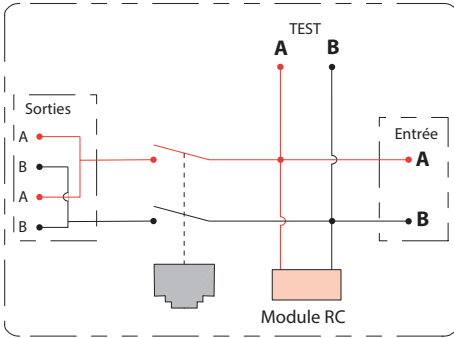


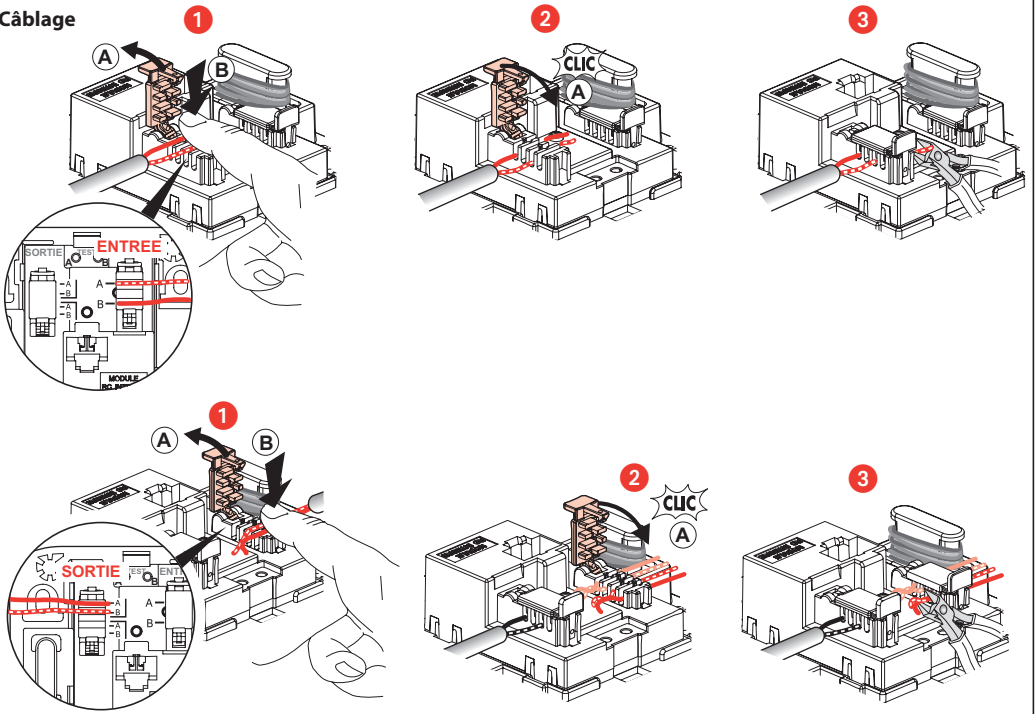
Schéma d'exploitation

DTI-RJ

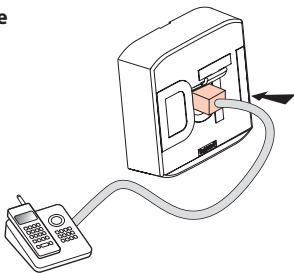


(*) : Câbles type 4 paires torsadées

Câblage



Test pour vérification du bon fonctionnement de la ligne



ATTENTION : Avant toute intervention, couper le courant.
Respecter strictement les conditions d'installation et d'utilisation