


Uraone

SATI Autotest EL* units Ref. 111 013V/ 111 227V/ 113 013V/ 111 248V
Addressable EL* units Ref. 112 013V/ 112 229V/ 113 023V/ 112 249V/ 112 259V SATI
Autotest & Connected EL* units Ref. 113 218V/ 113 228V/ 113 238V/ 113 248V/ 113 258V

1 Features

	SATI (Autotest)	Power (W)	SATI (Autotest) & Connected	Power (W)	SATI (Autotest) & Addressable	Power (W)	Emergency duration / lumen output
BAES Évacuation ^(A)	111 013V	0.8	113 218V	0.5	112 013V	0.5	45 lm / 1 h
BAES Ambiance ⁽¹⁾	111 227V	0.8	113 228V	0.8	112 229V	0.8	400 lm / 1h
BAEH ^(A)	113 013V	0.8	113 238V	0.5	113 023V	0.5	8 lm / 5 h
BAES + BAEH ^(A)	111 248V	1	113 248V	0.5	112 249V	0.5	45 lm / 1 h 8 lm / 5h
BAES + D.B.R. ^(B)	/		113 258V	0.5	112 259V	0.5	45 lm / 1 h





IP 42 - IK 07
230 V~
50/60 Hz


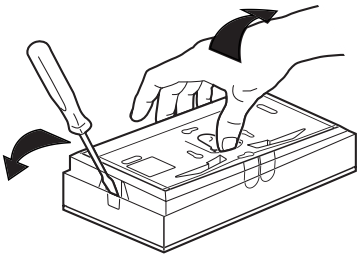


⁽¹⁾ For "ambiance" or antipanic Emergency lighting units :
The luminaire should be positioned in such a way that the prolonged look of the luminaire at a distance of less than 0.5m is not expected.

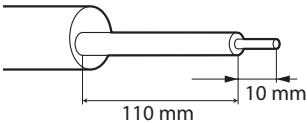
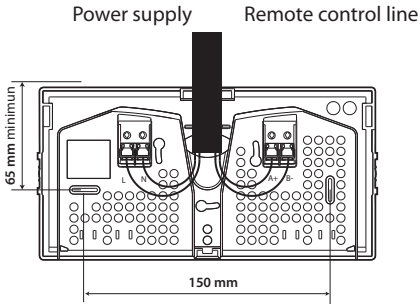
Certificate of conformity available on request from URA, or at www.ura.fr

 Strictly observe the conditions of installation and use 

2 Opening

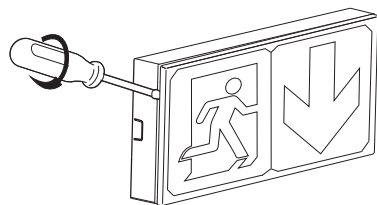


3 Connecting



Section from 1.5 à 2.5 mm²

4 Adjustable label



5 Power up

- Check that the white standby LEDs and the green SATI status light are lit.
- Note: During the first 24 hours of charging, the green SATI status light flashes.

6 Power failure/ Standby mode

The green SATI status light is OFF and the white standby LEDs are ON with high intensity (with lumen output variation for D.B.R.).

7 Rest mode

- After voluntary interruption of the normal lighting power supply, a press on the Extinction button of the remote control box puts the EL units on rest mode, to avoid discharging the battery.
- When the normal lighting is switched on again, the EL unit automatically returns to standby mode.

8 Maintenance

The block continuously monitors the status of its safety components and automatically performs the following tests:

- Weekly: switch to emergency mode and test light sources for 15 seconds.
- Quarterly: switch to emergency mode, test light sources and battery duration.

For addressable EL units, a commissioning procedure is described in the "Installation" chapter of the technical guide for URAVISION installation.

Description of the test result by the SATI status LEDs:

Fixed green LED on	Flashing green LED	Yellow LED on and green LED off	Flashing yellow LED and green LED off
EL unit OK	EL unit charging	Replace battery or complete EL unit	Replace EL unit

The light source of these luminaires is not replaceable. When the light source reaches its end of life, the entire luminaire must be replaced.

8 Maintenance (continued)

Important: Batteries must be replaced when the EL unit no longer meets its assigned duration. This status is indicated by the lighting up of the yellow LED.



Désignation	SATI (autotest)	SATI (Autotest) & Connected	SATI (Autotest) & Addressable	Battery type	Battery reference
BAES Evacuation	111 013V	113 218V	112 013V	NiMH 1.2V - 1.1Ah AA	111 914
BAES Ambiance	111 227V	113 228V	112 229V	NiMH 4.8V -2 Ah Cs	111 916
BAEH	113 013V	113 238V	113 023V	NiMH 1.2V - 1.1Ah AA	111 914
BAES + BAEH	111 248V	113 248V	112 249V	2 x NiMH 1.2V - 1.1Ah AA	111 915
BAES + D.B.R.	/	113 258V	112 259V	2 x NiMH 1.2V - 1.1Ah AA	111 915

Possibility to monitor Connected SATI EL units from the installation remotely, using the Web Application, <https://ura.eva.fr>, for more details see the datasheet.

9 « Visibilité + » function

For **BAES Evacuation and BAES+BAEH EL units**, on triggering a general fire alarm when mains is on, these EL units will flash for 15 minutes. Beyond that, they return to standby mode.

When configured, **the Connected and Addressable SATI EL units** activate a runway light to increase the visibility of the exit doors & evacuation route to be used and to reduce the evacuation time.

This setting is described in the product data sheet.

10 Safety instructions



This product must be installed in accordance with the installation rules and preferably by a qualified electrician. Improper installation and/or use can lead to electric shock or fire hazards. Before performing the installation, read the instructions, take into account the place of assembly specific to the product.

Do not open, disassemble, alter or modify the device unless specifically stated in the manual. All **Ura** products must only be opened and repaired by personnel trained and authorized by **Ura**. Any unauthorized opening or repair voids all liability, replacement rights and warranties.

Use only accessories of the **Ura** brand.

11 Environment



This symbol indicates that at the end of life, the product must be collected separately from other waste and handed over to a collection centre approved in compliance with the standards and legal provisions in force in EU countries, to prevent adverse effects on the environment and human health. Improper disposal of the product is punishable by law. It is recommended to ensure that in the country where the product is used, it is subject to WEEE/WEEE regulations

