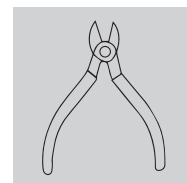


# Installation Instructions

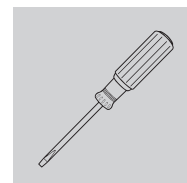
Bring power and charging right up to desks and tablespots. Desktop Power Centers are a smart, simple way of adding power and charging. The unit mounts directly to the surface, keeping the workspace free from cord clutter and creating a more organized and spacious environment. Elegant design and colours blend in nicely with any environment and the furniture within it.

This product is easy to install in various ways. You can use different accessories to mount it horizontally or vertically. These accessories offer several options, allowing you to mount the product on walls, under tables, or above tables in any setting.

## Tools Required

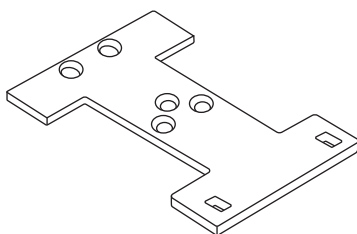


Cutter

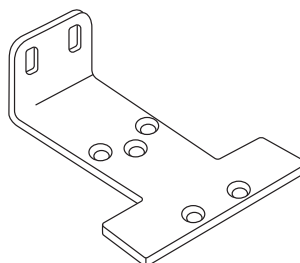


Screwdriver

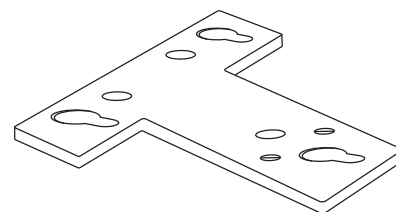
### I Clamp – Above The Table



### L Clamp – Under The Table/Over The Table



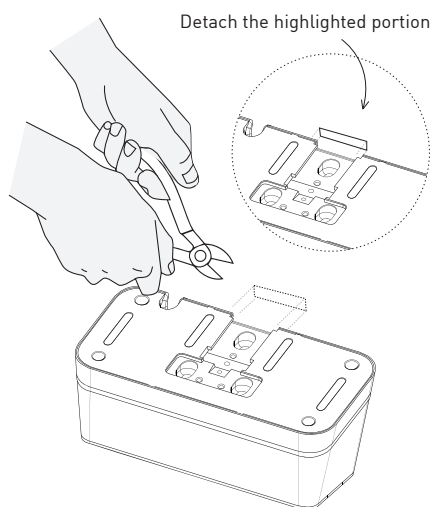
### T Clamp – Wall Mount



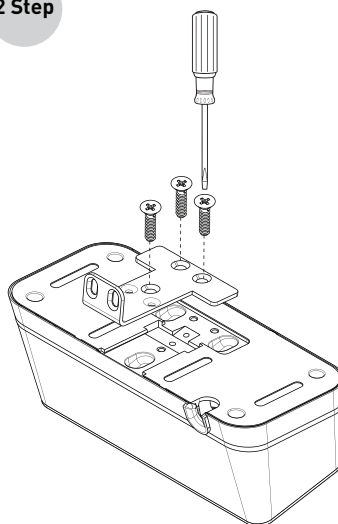
## L - CLAMP

### 1 Step

Start by cutting both edges of highlighted portion in the drawings and gently bend them to detach from the product.



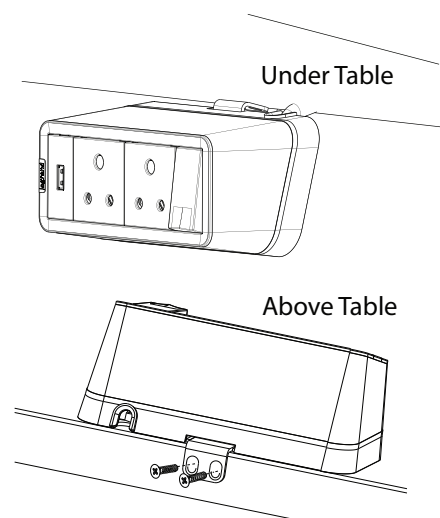
### 2 Step



Fix the clamp to the unit using the provided 3 screws.

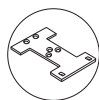
### 3 Step

Securely screw the unit onto the table using two (2) screws provided in two different orientations – one above the table and one below the table, as shown in the images. Ensure the table is at least 1/2" thick for proper screw mounting.



### 4 Step

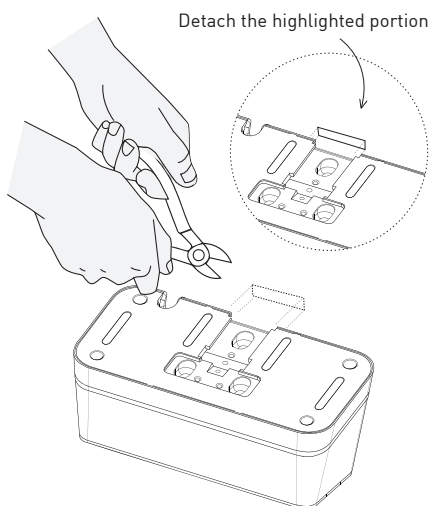
Plug the unit into the power supply for use.



## I - CLAMP

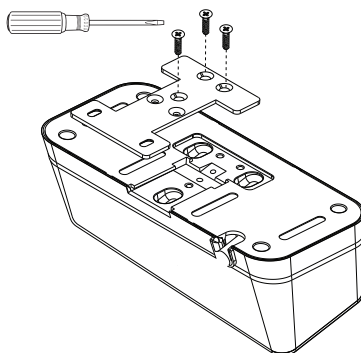
### 1 Step

Start by cutting both edges of highlighted portion in the drawings and gently bend them to detach from the product.



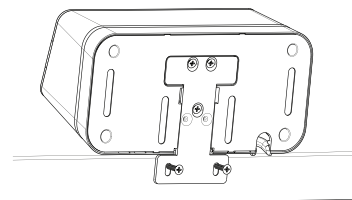
### 2 Step

Attach the clamp to the unit using the provided 3 screws.



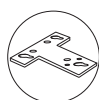
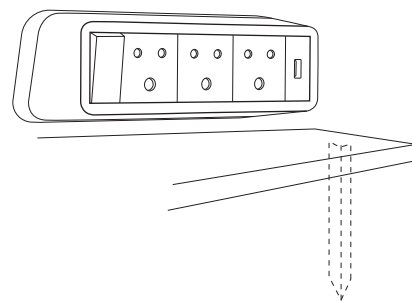
### 3 Step

Securely screw the unit onto the edge of the table using the two screws. Ensure the table is at least 1/2" thick for proper screw mounting.



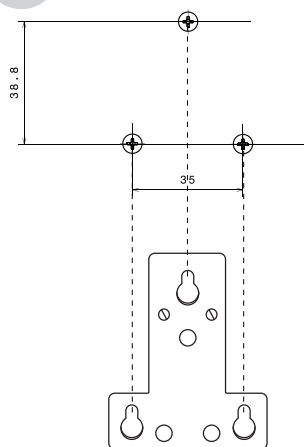
### 4 Step

Plug the unit into the power supply for operation.



## T - CLAMP

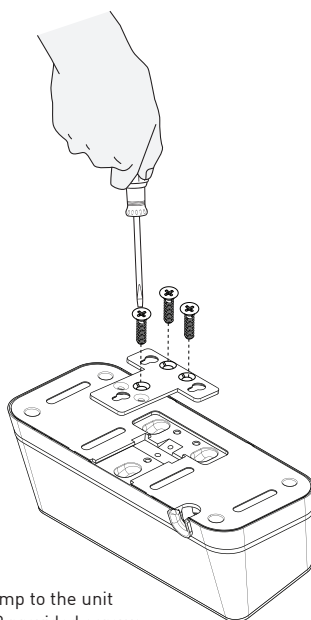
### 1 Step



Hold the clamp in your hand and make marks on the walls. Then, tightly screw in the screws according to the marks. Make sure the screws stick out 4 mm from the walls.

### 2 Step

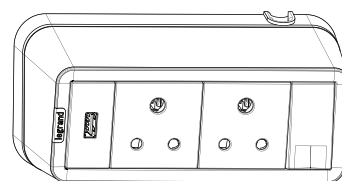
Fix the clamp to the unit using the 3 provided screws.



### 3 Step

Hang the product on the walls by matching the keyholes on the attached bracket with the screws secured to the walls

### Wall Mount



### 4 Step

Plug the unit into the power supply for use.

## Warranty policy

Legrand warrants to the original purchaser that the Products (excluding any third-party products purchased through Legrand, for which no warranties are made) will be free from defects in material and workmanship, under normal use and regular service, and preventative maintenance for a period of 24 months from the date of purchase. Should any failure to conform with this warranty be found during the Warranty Period, you must notify Legrand of your claim within thirty (30) days of discovery, and within the Warranty Period. Your failure to give notice of claims of breach of warranty within the Warranty Period shall be deemed an absolute and unconditional waiver of claims for such defects. Legrand will have no responsibility to honour claims received after the date the applicable Warranty Period expires. The invoice / bill in original must be produced without which warranty claim shall not be entertained.

This warranty does not cover the following:

- Defect caused due to misuse, alteration, faulty installation, faulty electrical systems, negligent maintenance or misapplication of the product.
- Failure of product or components due to any act of nature; lightning strike, floods, hurricanes, tornadoes, etc. beyond the control of human being.
- Legrand does not warrant any third-party products or associated hardware or their performance or suitability for use and application. Such items are provided "as-is".