

# HELP CONFIGURING ACCESS

**Gigabit Managed Switch**

**26-Port/24 PoE+**

**XMS - 2624P**



0 334 92

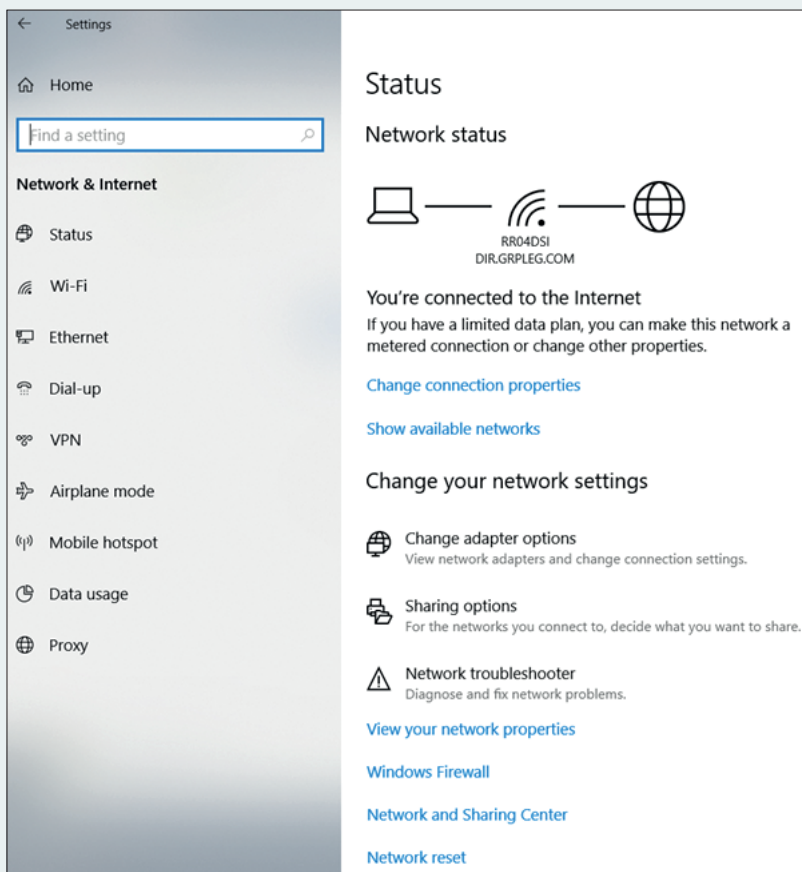
 **legrand**<sup>®</sup>

[www.legrand.fr](http://www.legrand.fr)

Open windows "setting"

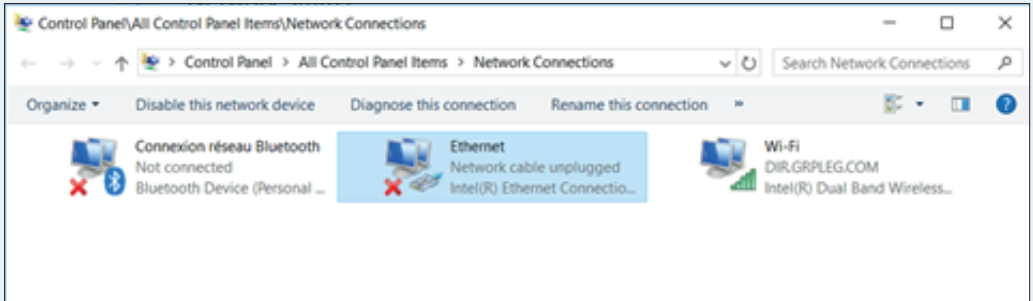
Click on "Network & internet"

Click on menu "Etat"



Click on "Change adapter options"

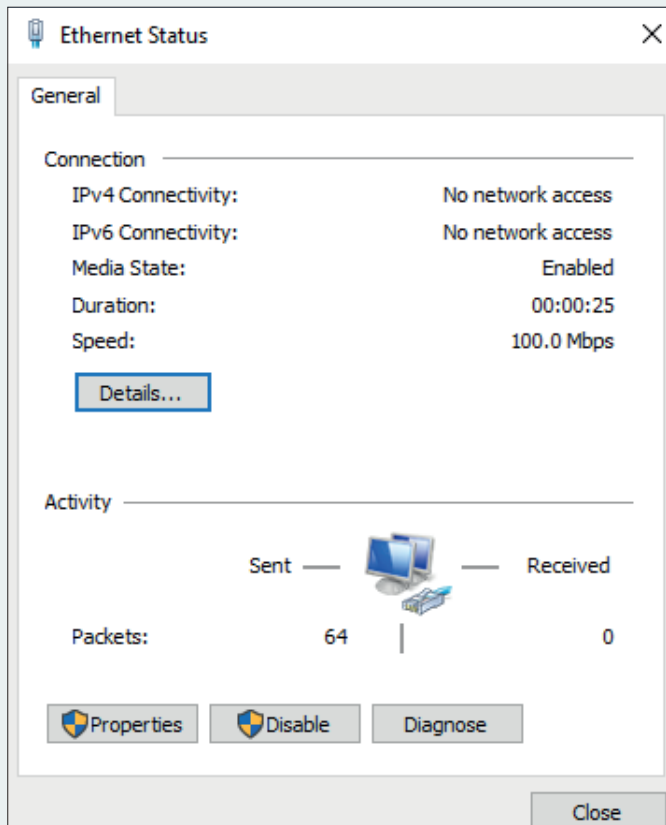
## A new window must open



Click on Ethernet

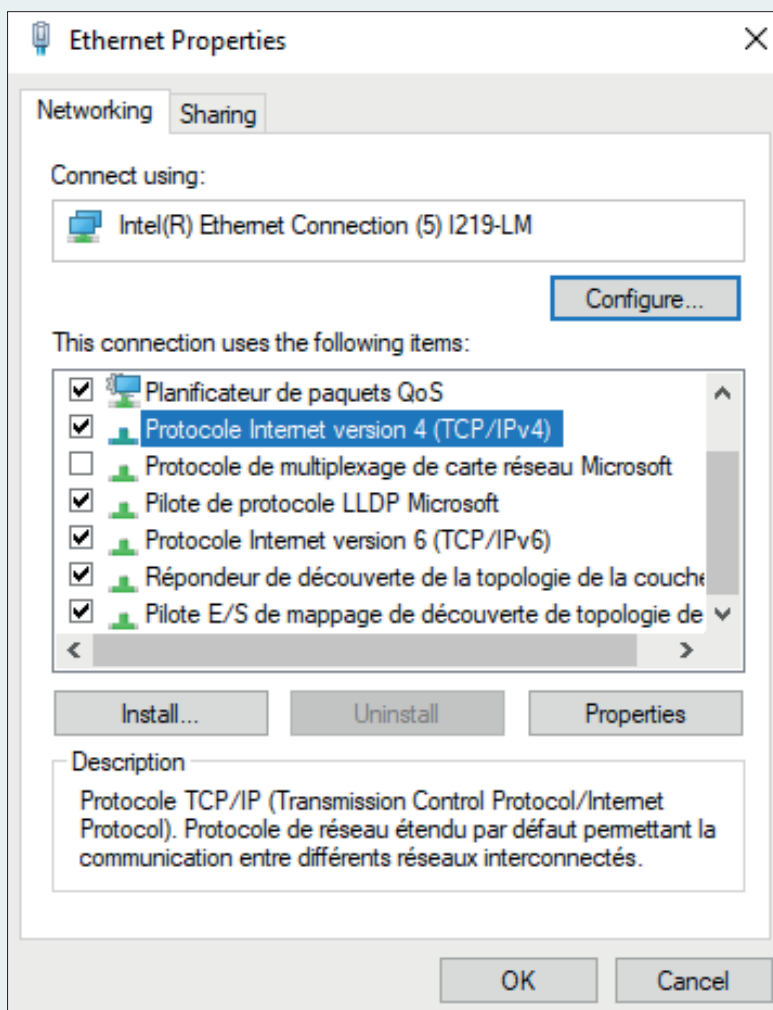
Be careful, the PC must be connected by a patch cord to the switch

A new window must open



Click on "Proterties"

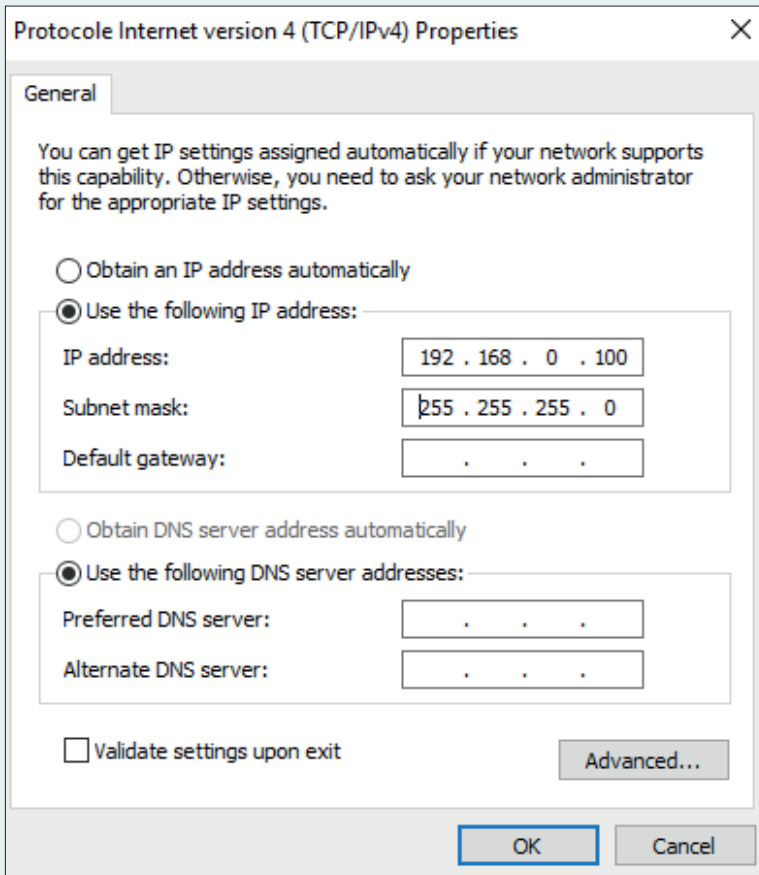
## A new window must open



**Sélect "Protocol Internet Version 4 (TCP/IPv4)"**

**Click on "Proterties"**

## A new window must open



**Fill the window as shown in the picture**

**Click on OK**

**Close all windows**

**Open an Internet Explorer**

**In the bar, type the IP address of the switch (indicated behind the switch) 192.168.0.4**

**Login : ADMIN**

**Password : ADMIN**

**You are now on the switch's web page**

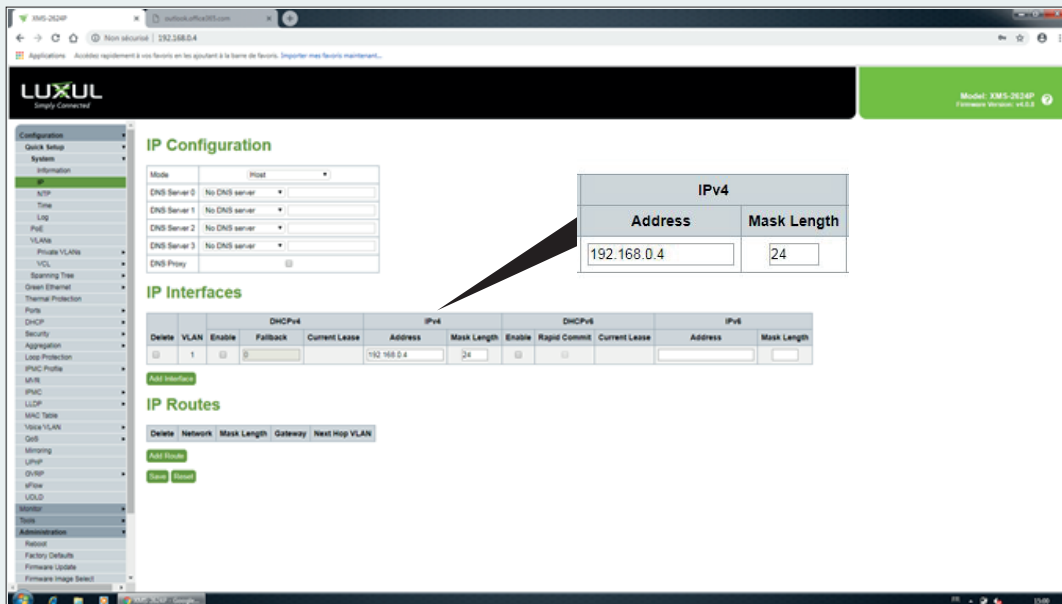
In the menu banner on the left

Click on "Quick Setup".

Then "System"

Then "IP"

You are now on the switch's web page



You must display the page above

In the "IP interfaces" part you can change the IP address of the product

**Warning: 2 different backups are possible**

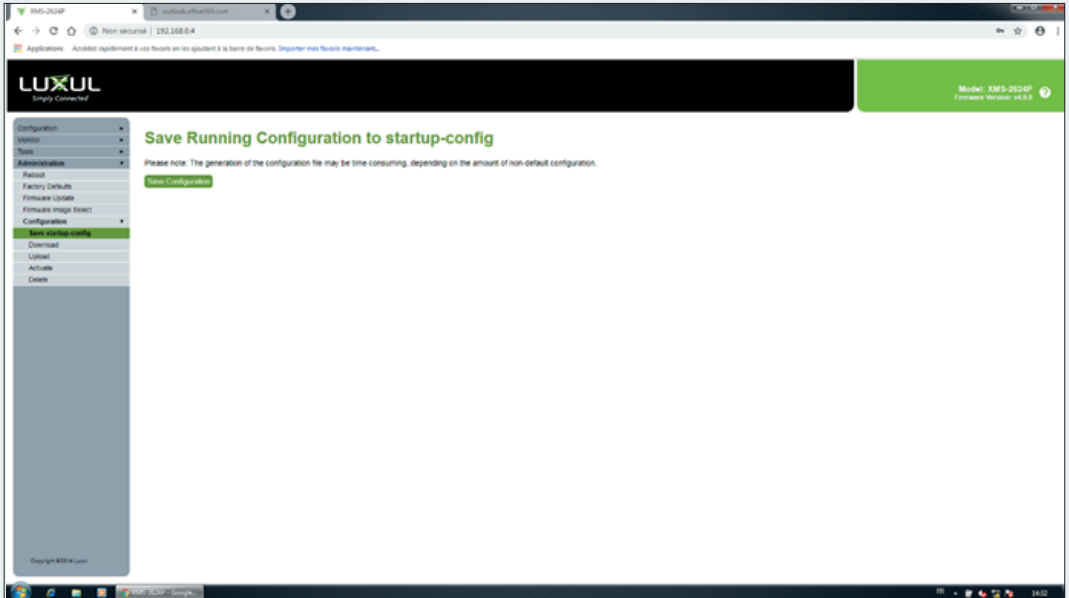
**1 - A temporary backup:**

If in this window you click on "save"

Then, the address will be saved until the next switch stop

## 2 - A definitive backup:

### To save permanently



In the menu banner on the left

Click on "administration"

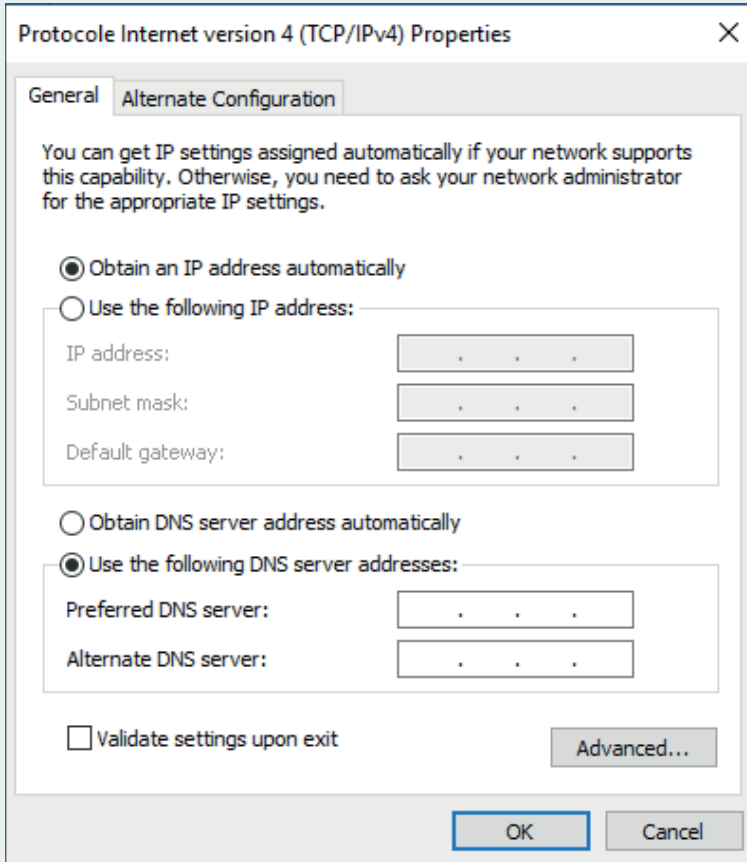
Sub-menu "Configuration"

Then "Save startup-config"

When the page is displayed, you can save the total switch configuration

**Return to the initial state of the PC:**

Repeat the steps on pages 1 to 4



**In the window above select "get an IP address automatically"**

**Return to the initial state of the switch:**

- If you save temporarily, then simply turn the switch off and on again.

- If you have made a final backup, press the front panel button for a long time (8 sec)