

# HELP CONFIGURING ACCESS

**Smart Switch**

**18-Port/16 PoE+/2 Gig Uplink**

**XFS - 1816P**



0 334 91

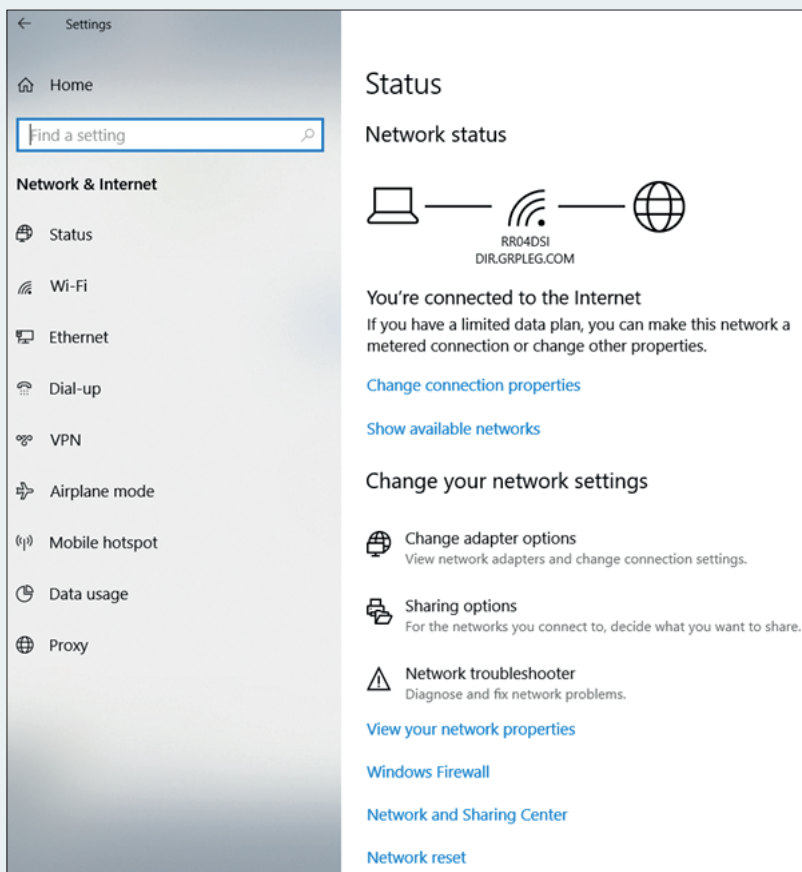
 **legrand**<sup>®</sup>

[www.legrand.fr](http://www.legrand.fr)

Open windows "setting"

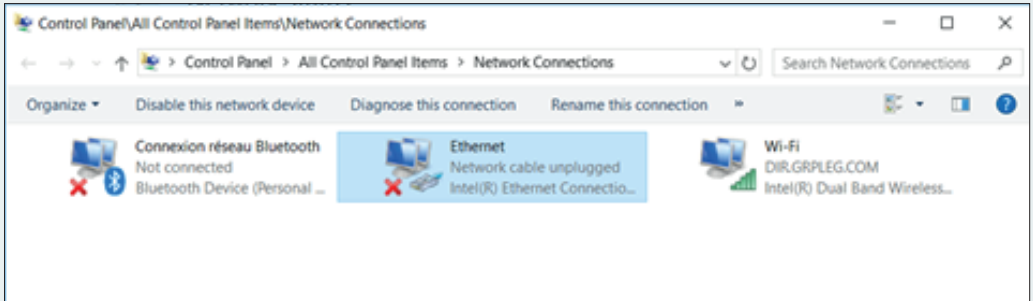
Click on "Network & internet"

Click on menu "Etat"



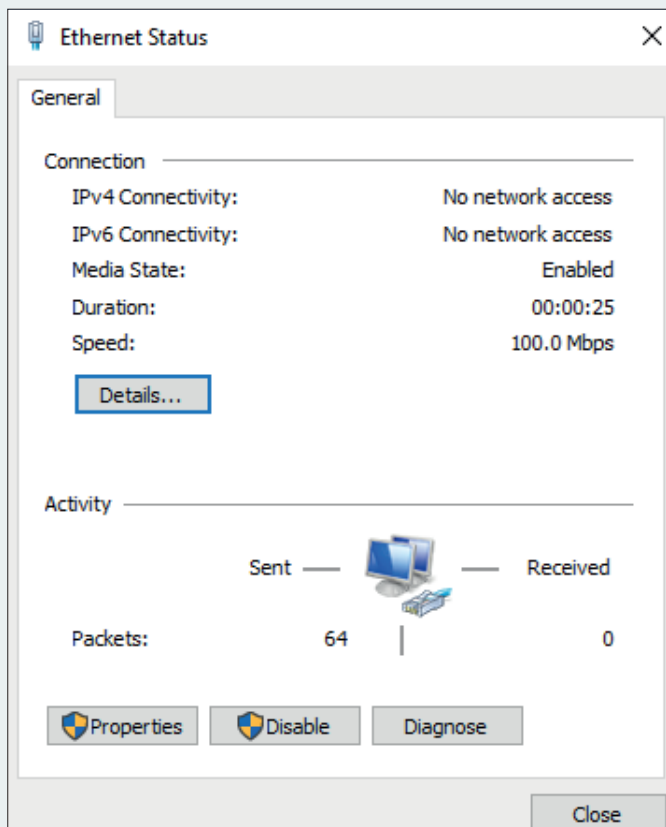
Click on "Change adapter options"

## A new window must open



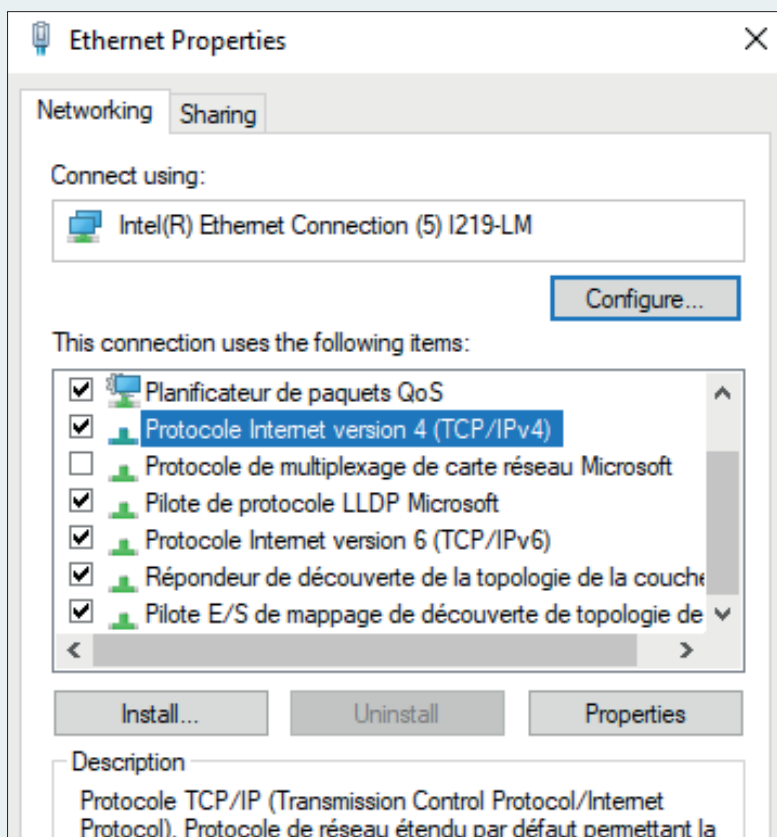
Click on Ethernet

A new window must open



Click on "Proterties"

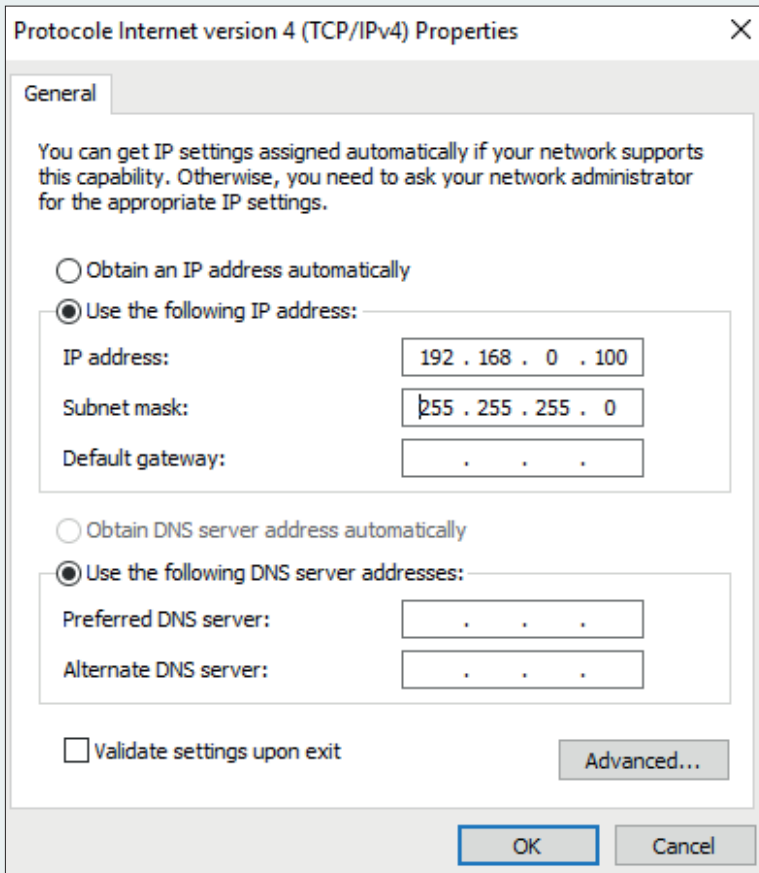
## A new window must open



**Sélect "Protocol Internet Version 4 (TCP/IPv4)"**

**Click on "Proterties"**

## A new window must open



**Fill the window as shown in the picture**

**Click on OK**

**Close all windows**

**Open an Internet Explorer**

**In the bar, type the IP address of the switch (indicated behind the switch) 192.168.0.4**

**Login : ADMIN**

**Password : ADMIN**

**You are now on the switch's web page**

In the menu banner on the left

Click on "Quick Setup".

Then "System"

Then "IP"

You are now on the switch's web page

The screenshot shows the Luxul web interface. The top left has the Luxul logo with the tagline "Simply Connected". The top right shows the model "XFS-1816P" and firmware version "V1.0.0.5". A navigation bar includes "System Info", "User Management", "Reset", "Reboot", and "Firmware Upgrade". The "System Info" page is active, displaying various system parameters:

Firmware Version	V1.0.0.5 (Mar 09 2015 10:36:48)
Hardware Version	V1.0
MAC Address	A413-4E87-73D8
Management VLAN	1
System Name	XFS-1816P
DHCP Client	Disable
IP Address	192.168.0.4
Subnet Mask	255.255.255.0
Gateway	192.168.0.1
MAC Age	300 (60-3000 s)

A "Note:" section at the bottom explains that a gateway IP address is required for static IP management. A "Save your settings before restarting the device" warning is visible on the left sidebar. An "OK" button is present in the top right of the configuration area.

You must display the page above

In the "IP interfaces" part you can change the IP address of the product

**Warning: 2 different backups are possible**

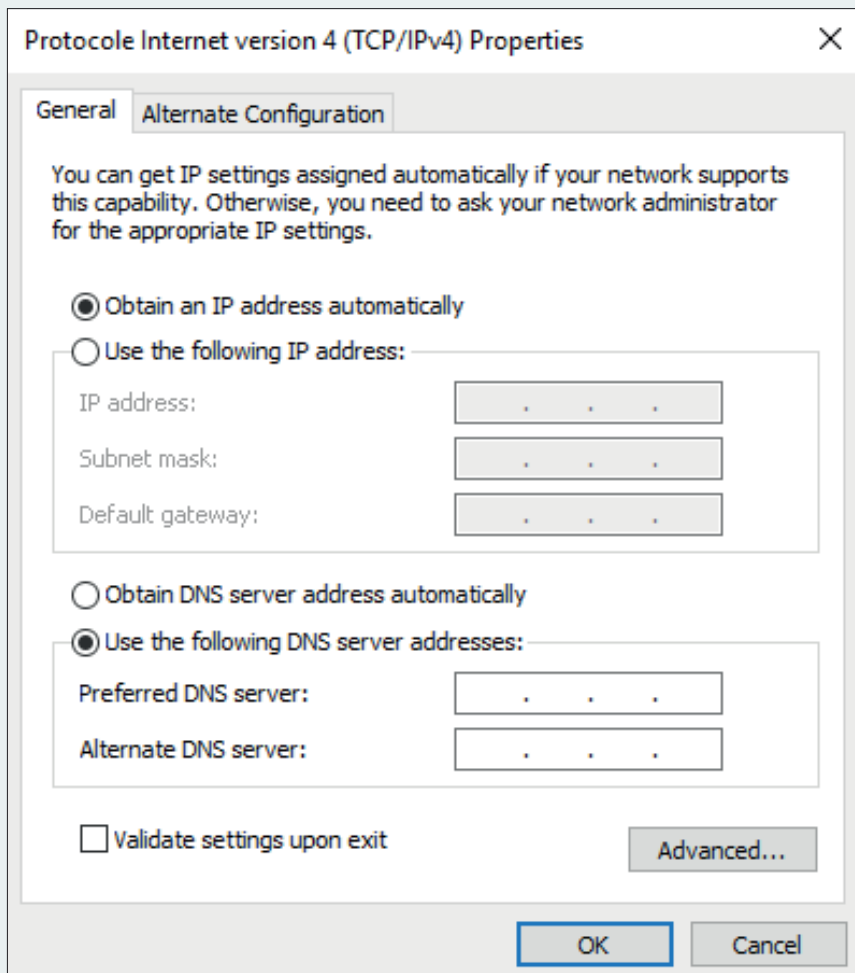
**1 - A temporary backup:**

If in this window you click on "save"

Then, the address will be saved until the next switch stop

## 2 - A definitive backup:

### To save permanently



Protocole Internet version 4 (TCP/IPv4) Properties

General **Alternate Configuration**

You can get IP settings assigned automatically if your network supports this capability. Otherwise, you need to ask your network administrator for the appropriate IP settings.

Obtain an IP address automatically

Use the following IP address:

IP address:

Subnet mask:

Default gateway:

Obtain DNS server address automatically

Use the following DNS server addresses:

Preferred DNS server:

Alternate DNS server:

Validate settings upon exit

Advanced...

OK Cancel

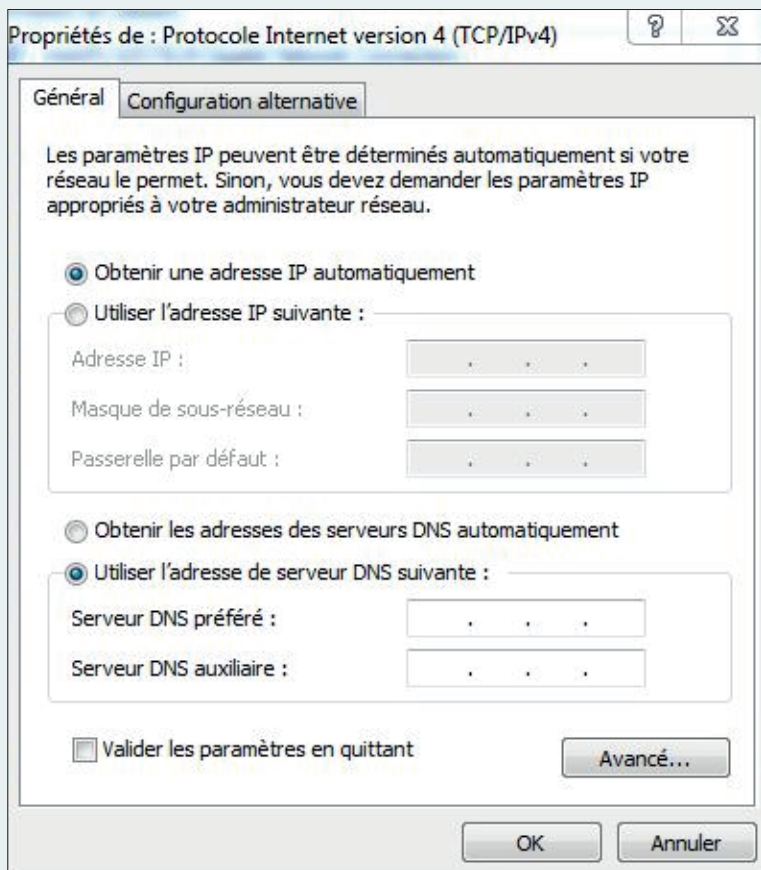
In the menu banner on the left

Click on "Configuration management"

Then click on "Save"

**Return to the initial state of the PC:**

Repeat the steps on pages 1 to 4



**In the window above select "get an IP address automatically"**

**Return to the initial state of the switch:**

- If you save temporarily, then simply turn the switch off and on again.

- If you have made a final backup, press the front panel button for a long time (8 sec)